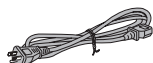
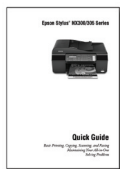
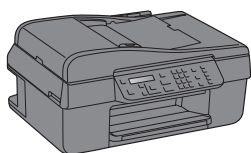


Epson Stylus® NX300/305 Series Start Here

Read these instructions before using your product.

1 Unpack



Power cord

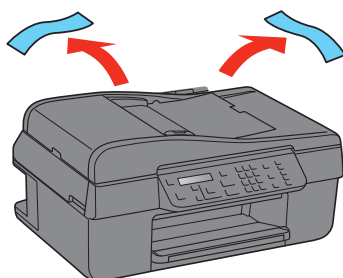


USB cable



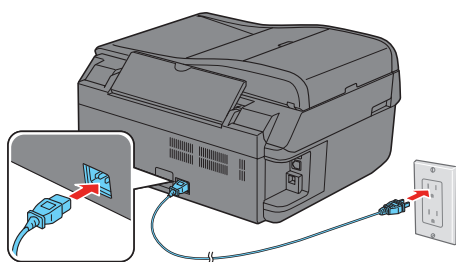
Caution: Do not open the ink cartridge package until you are ready to install the ink. Cartridges are vacuum packed to maintain reliability.

Remove all protective materials.



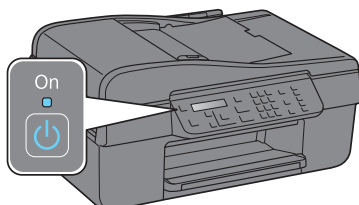
2 Turn on

- 1 Connect the power cable.

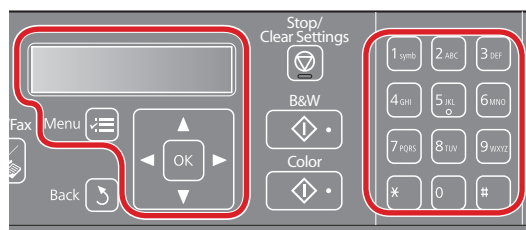














Caution: Do not connect to your computer yet.

- 2 Press the  On button.



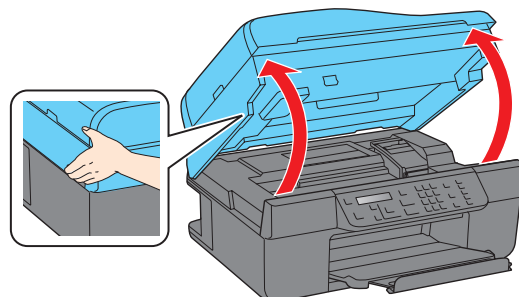
3 Make settings



- 1 Press  or  to select your language, then press **OK**.
- 2 Press  or  to select your country or region, then press **OK**.
- 3 Press  or  to select **Summer** if your region uses Daylight Saving Time and it's currently in effect. (DST is effective from spring through summer.) Otherwise select **Winter** to turn off the setting.
- 4 Press **OK**.
- 5 Press  or  to select the date format, then press **OK**.
- 6 Use the numeric keypad to change the date, then press **OK**.
- 7 Press  or  to select a 12-hour or 24-hour time format, then press **OK**.
- 8 Use the numeric keypad to set the time.
If you chose a 12-hour time format, press  or  to select **AM** or **PM**.
- 9 Press **OK**.

4 Install ink cartridges

- 1 Lift up the scanner.



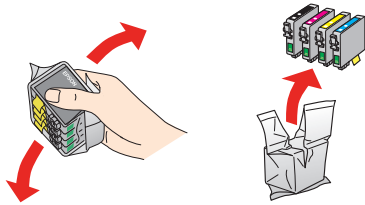
- 2 Open the cartridge cover.



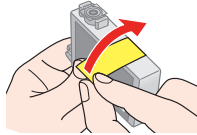
411852500

EPSON®
EXCEED YOUR VISION

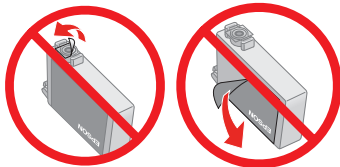
- 3 Shake the ink cartridges, then unpack them.



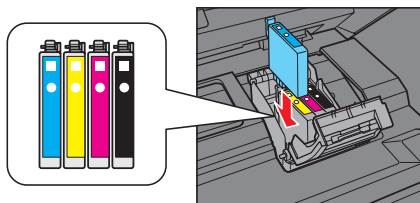
- 4 Remove only the yellow tape from each cartridge.



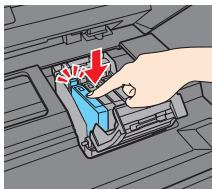
Caution: Don't remove any other seals from the cartridges.



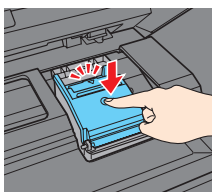
- 5 Insert the cartridges in the holder for each color.



- 6 Press each cartridge down until it clicks.



- 7 Close the ink cartridge cover and press it down until it clicks.



- 8 Lower the scanner.

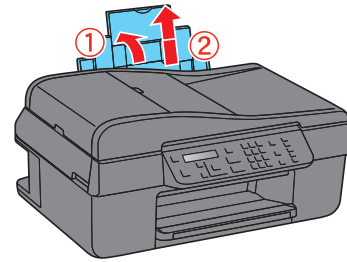
- 9 Press the **OK** button to charge the ink. Charging takes about 2 minutes.

Note: Your printer ships with full cartridges and part of the ink from the first cartridges is used for priming the printer.

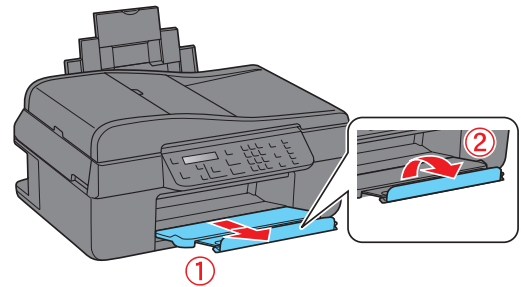
Caution: Don't turn off the printer while it is charging or you'll waste ink.

5 Load paper

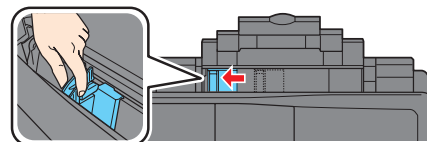
- 1 Open the paper support and pull up the extensions.



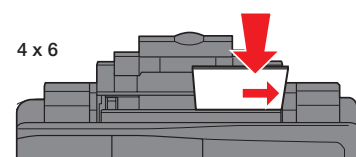
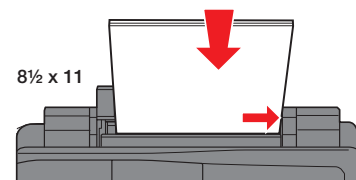
- 2 Open the output tray, pull out the extension, and raise the paper stopper.



- 3 Pinch the edge guide and slide it to the left.



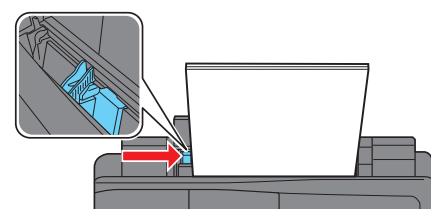
- 4 Load paper against the right edge guide and behind the tab, with the printable side face up.



Note: Don't load the paper sideways; always load it short edge first.

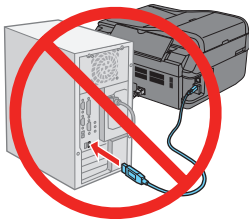


- 5 Slide the edge guide over.

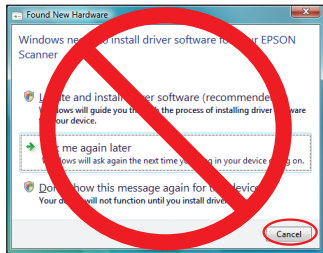


6 Install software

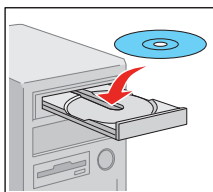
- 1 Make sure the printer is **NOT CONNECTED** to your computer.




Windows®: If you see a Found New Hardware screen, click **Cancel** and disconnect the USB cable. You can't install your software that way.



- 2 Insert the NX300/305 Series software CD.

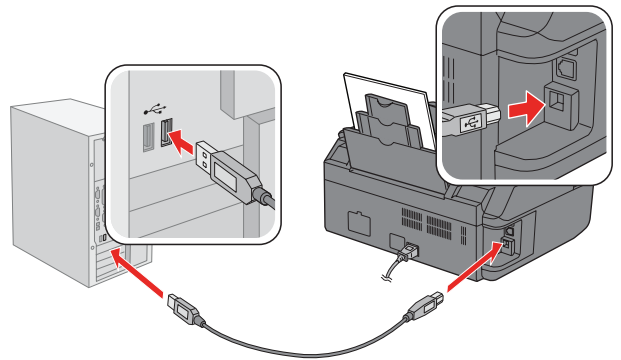


Windows: If you see the AutoPlay window, click **Run SETUP.EXE**. If you see a User Account Control screen, click **Yes** or **Continue**.

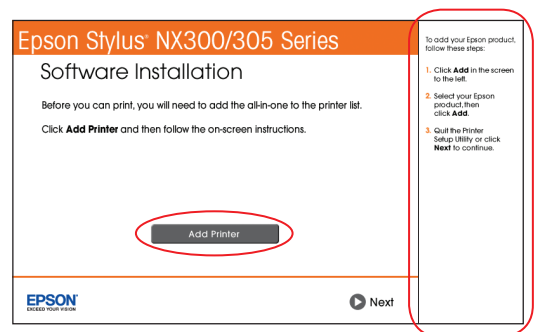
- 3 Double-click the  **Epson** icon, if necessary.
- 4 Click **Install** and follow the on-screen instructions.



- 5 When prompted, connect the USB cable. Use any open USB port on your computer. Make sure the printer is turned on.

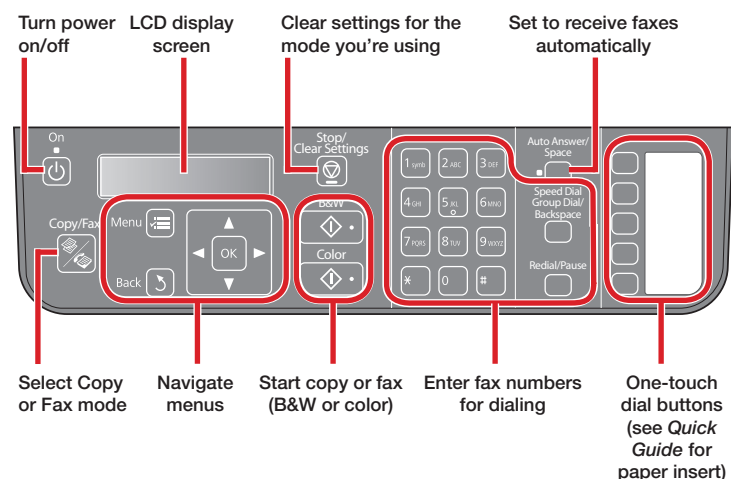


- 6 **Mac OS® X 10.4 only:** When you see this screen, click **Add Printer**. Follow the steps on the right side of the screen to add your printer. Click **Next** to continue, if necessary.



- 7 Follow the on-screen instructions to install the rest of the software and register your printer.
- 8 When you're done, remove the CD.

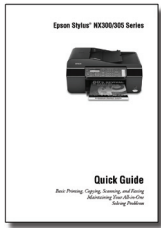
Control panel



Any questions?

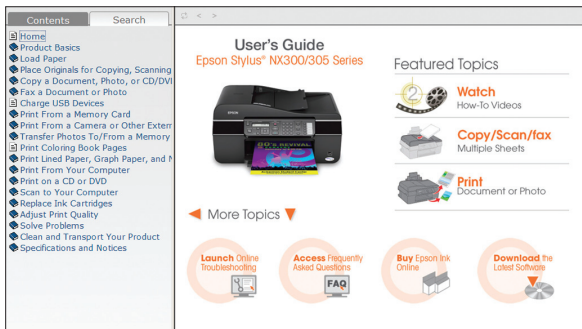
Quick Guide

Basic instructions for printing, copying, scanning, and faxing.



User's Guide

Click the desktop shortcut to access the online *User's Guide*, how-to videos, software downloads, Epson Supplies CentralSM, and more (requires an Internet connection).



Epson Technical Support

Visit epson.com/support to download drivers, view manuals, get FAQs, or e-mail Epson.

You may also speak with a support specialist by calling (562) 276-4382 (U.S.) or (905) 709-3839 (Canada), 6 AM to 6 PM, Pacific Time, Monday through Friday. Days and hours of support are subject to change without notice. Toll or long distance charges may apply.

Software Technical Support

ABBY® FineReader®
(510) 226-6717
www.abbyyusa.com
support@abbyyusa.com

Need paper and ink?



Use Epson premium papers with DURABrite® Ultra Ink for professional results. You can purchase them from Epson Supplies Central at www.epson.com/ink3 (U.S. sales) or www.epson.ca (Canadian sales). You can also purchase supplies from an Epson authorized reseller. To find the nearest one, call 800-GO-EPSON (800-463-7766).

Genuine Epson Paper

Epson offers a wide variety of papers to meet your needs; visit Epson Supplies Central for more information.



Premium Presentation Paper Matte

Ultra smooth, non-glare, heavy-weight paper for long-lasting photos and professional looking brochures.

Genuine Epson Ink



Look for the numbers below to find your cartridges. It's that easy!

Color	Moderate use	Standard capacity	High capacity
Black	88	69	68
Cyan	88	69	--
Magenta	88	69	--
Yellow	88	69	--

Epson and Epson Stylus are registered trademarks, Epson Exceed Your Vision is a registered logomark, and Supplies Central is a service mark of Seiko Epson Corporation. DuraBrite is a registered trademark of Epson America, Inc.

General Notice: Other product names used herein are for identification purposes only and may be trademarks of their respective owners. Epson disclaims any and all rights in those marks.

This information is subject to change without notice.