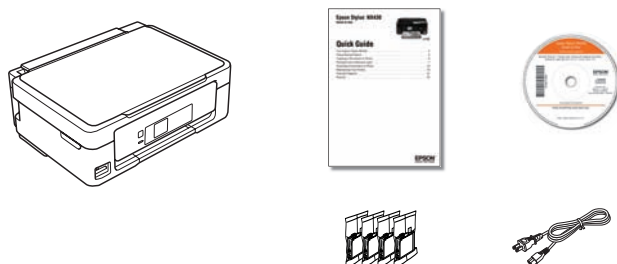


Start Here

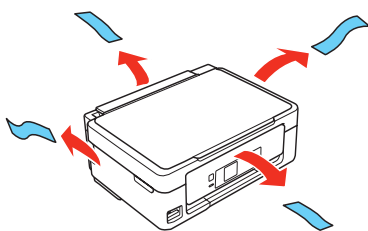
Read these instructions before using your product.

1 Unpack



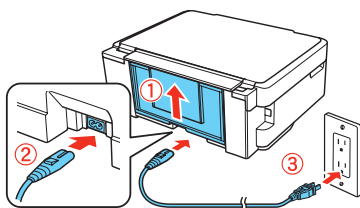
Caution: Do not open ink cartridge packages until you are ready to install the ink. Cartridges are vacuum packed to maintain reliability.

Remove all protective materials, including from inside the printer.



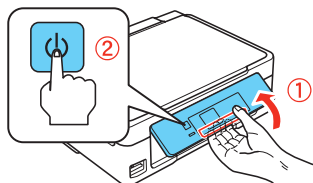
2 Turn on and adjust

- 1 Raise the paper support, then connect the power cord to the back of the printer and to an electrical outlet.



Caution: Do not connect to your computer yet.

- 2 Raise the control panel, then press the power button.

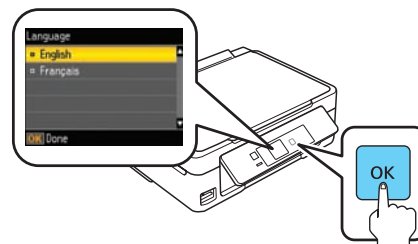


Note: If you want to lower the control panel, squeeze the release bar underneath.

Caution: Do not lower the control panel without first squeezing the release bar underneath or you may damage the product.

3 Select language

To select **English** as your language, press **OK**.



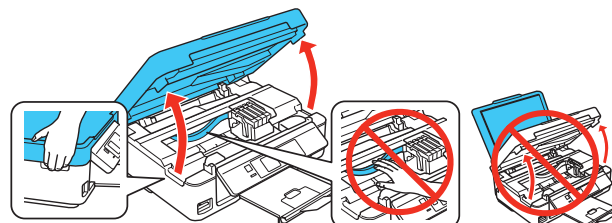
If you want to change the language, press ▲ or ▼ to select it, then press **OK**.

Note: You can change the language later using the product's control panel. For more information, see the online *User's Guide*.

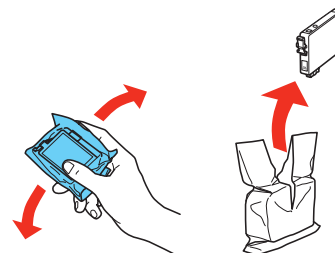
4 Install ink cartridges

Note: Don't load paper yet.

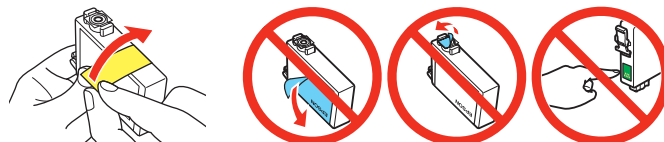
- 1 Lift up the scanner unit, and wait until the ink cartridge holder stops moving.



- 2 Shake the ink cartridges gently 4 or 5 times, then unpack them.

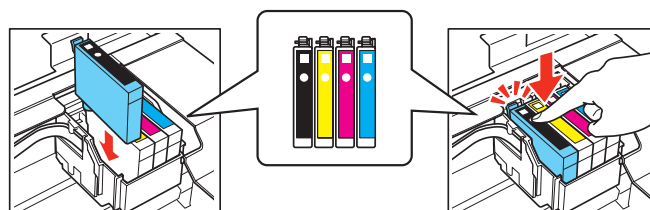


- 3 Remove only the yellow tape from each cartridge.



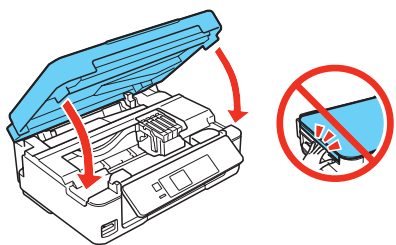
Caution: Don't remove any other seals or the cartridges may leak.

- 4 Insert the cartridges in the holder for each color, and press each cartridge down until it clicks.



412184000

- 5 Lower the scanner unit.

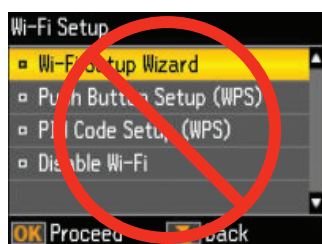


- 6 Press **OK** to prime the ink delivery system. Priming takes about 4 minutes.

Note: Your printer ships with full cartridges and part of the ink from the first cartridges is used for priming the printer.

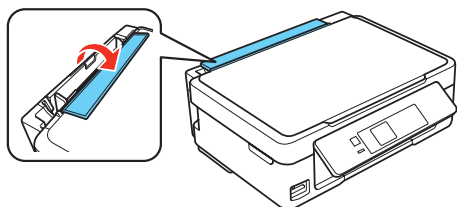
Caution: Don't turn off the printer while it is priming or you'll waste ink.

- 7 When you see this menu on your product's LCD screen, do not press any buttons yet. Continue with the instructions in the following sections.

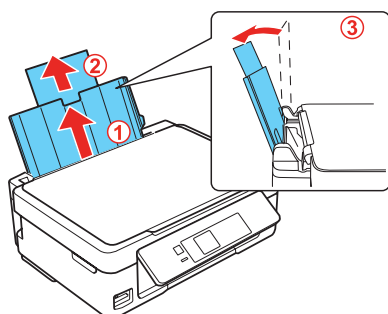


5 Load paper

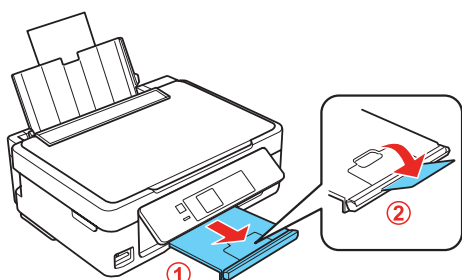
- 1 Flip the feeder guard forward.



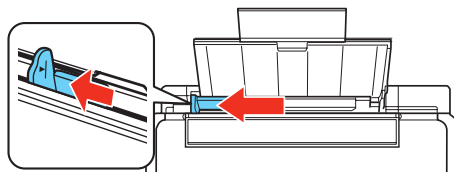
- 2 Raise the paper support, if necessary. Then pull up the extension and tilt it back slightly.



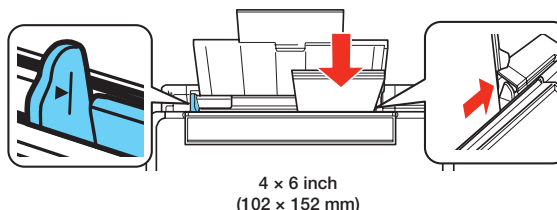
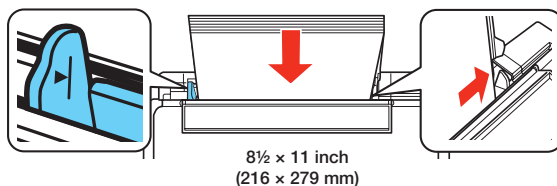
- 3 Pull out the output tray, then raise the paper stopper.



- 4 Slide the edge guide to the left.



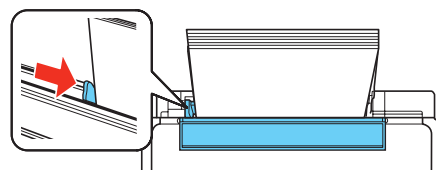
- 5 Load paper against the right edge guide and behind the tab line on the left edge guide, with the printable side faceup.



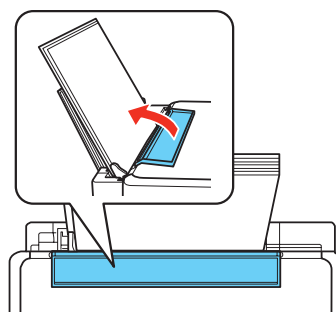
Note: Don't load the paper sideways; always load it short edge first.



- 6 Slide the edge guide over, against the left edge of the paper.



- 7 Flip the feeder guard back.

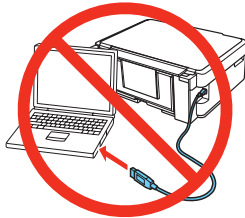


6 Install software

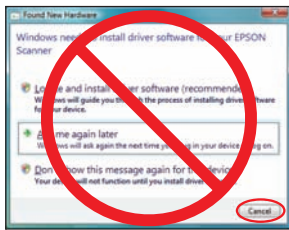
Note: If your computer does not have a CD/DVD drive, you can download the software from the Epson website. See “Epson technical support.”


Caution: Be sure to close your other programs, including any screen savers and virus protection software, before beginning this software installation.

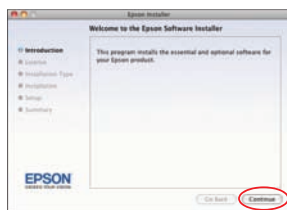
- 1 Make sure the printer is **NOT CONNECTED** to your computer.



Windows®: If you see a Found New Hardware screen, click **Cancel** and disconnect the USB cable. You can't install your software that way.

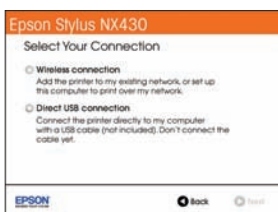


- 2 Insert the product CD.
- 3 **Windows:** If you see the AutoPlay window, click **Run Setup.exe**. If you see the User Account Control screen, click **Yes** or **Continue**.
Mac OS® X: Double-click the  **Epson** icon, if necessary.
- 4 Click **Install** (Windows) or **Continue** (Mac OS X) and follow the instructions on your computer screen.



- 5 When you see the Select Your Connection screen, check the “Connection options” section on this sheet for more information.

Choose your connection. Then click **Next** (Windows) or **Continue** (Mac OS X) and follow the instructions on your computer screen.



Connection options

Wireless Connection

You must install the software on every computer from which you want to print. For the first installation, we recommend using a USB cable (not included) to simplify wireless setup. After the printer is connected to the network, you will be prompted to remove the cable.

If you're using Mac OS X 10.6 or 10.7, or you don't have a USB cable, you will need to use the buttons on the printer to select wireless settings. Follow the instructions on your computer screen during software installation; they will explain how to connect the printer wirelessly this way.

Make sure you know your network name (SSID) and network password:

- Network name _____
- Network password _____

If you don't have this information, contact the person who set up your network.

Direct USB Connection

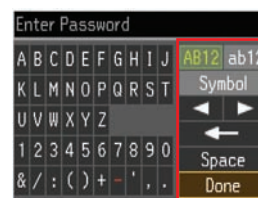
Make sure you have a USB cable (not included).

Any problems?

If you experience problems during setup, see below:

Network setup was unsuccessful.

- Make sure you select the right network name (SSID).
- If you see a firewall alert message, click **Unblock** or **Allow** to let setup continue.
- If your network has security enabled, make sure you enter your network password (WEP key or WPA passphrase) correctly. If it has uppercase (ABC), lowercase (abc) letters, or symbols (!%@) make sure you enter them correctly.



Function buttons

Press ▲, ▼, ◀, or ▶ on the printer to highlight a character or function button. Press **OK** to select it.

Passwords must be entered in the correct case. Use the function buttons to select uppercase (**AB12**), lowercase (**ab12**), symbols (**Symbol**), or spaces (**Space**), and to delete characters (◀).

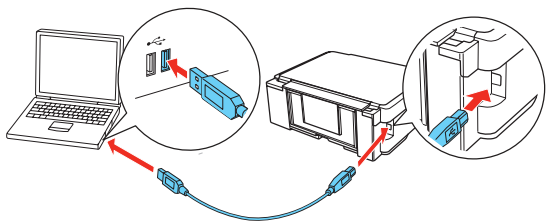
When you're finished, highlight **Done** and press **OK**.

The printer's screen is dark.

Press any button to wake your product from sleep mode.

Setup is unable to find my printer after connecting it with a USB cable.

Make sure it is securely connected as shown:



Any questions?

Quick Guide

Basic instructions for copying, printing, scanning, and troubleshooting.



User's Guide

Click the icon on your desktop (or in the **Applications/Epson Software/Guide** folder in Mac OS X) to access the online *User's Guide*, software downloads, Epson Supplies Central®, and more (requires an Internet connection). If you don't have a User's Guide icon, you can install it from the CD or go to the Epson website (see "Epson technical support").



On-screen help with your software

Select **Help** or **?** when you're using your software.

Epson technical support

Visit epson.com/support (U.S.) or epson.ca/support (Canada) where you can download drivers, view manuals, get FAQs, or e-mail Epson.

You may also speak with a support specialist by calling:

- **U.S.:** (562) 276-4382, 6 AM to 8 PM, Pacific Time, Monday through Friday, and 7 AM to 4 PM, Pacific Time, Saturday
- **Canada:** (905) 709-3839, 6 AM to 8 PM, Pacific Time, Monday through Friday

Days and hours of support are subject to change without notice. Toll or long distance charges may apply.

Recycling

Epson offers a recycling program for end of life hardware and ink cartridges. Please go to www.epson.com/recycle for information on how to return your products for proper disposal.

Need paper and ink?

Try Epson paper with DURABrite® Ultra Ink for professional results. For the right supplies at the right time, you can purchase them at Epson Supplies Central at www.epson.com/ink3 (U.S. sales) or www.epson.ca (Canadian sales). You can also purchase supplies from an Epson authorized reseller. To find the nearest one, call 800-GO-EPSON (800-463-7766).

DESIGNED *for* EXCELLENCE™
Epson printers, ink and specialty papers.

Genuine Epson paper

Epson offers a wide variety of papers to meet your needs; visit Epson Supplies Central for more information.



Premium Presentation Paper Matte

Heavyweight, non-glare card stock for school and business projects plus photos.

Genuine Epson inks



Look for the numbers below to find your cartridges. It's as easy as remembering your number!



Epson Stylus NX430 ink cartridges

Color	Moderate-capacity	High-capacity
Black	124	126
Cyan	124	126
Magenta	124	126
Yellow	124	126

Epson Connect



Get instant, wireless printing of photos and attachments right from smartphones, iPads, tablets, and other popular mobile devices. See www.epson.com/connect for details.

Epson, Epson Stylus, Supplies Central, and DURABrite are registered trademarks and Epson Exceed Your Vision is a registered logomark of Seiko Epson Corporation. Designed for Excellence and Small-in-One are trademarks of Epson America, Inc.

General Notice: Other product names used herein are for identification purposes only and may be trademarks of their respective owners. Epson disclaims any and all rights in those marks.

This information is subject to change without notice.