
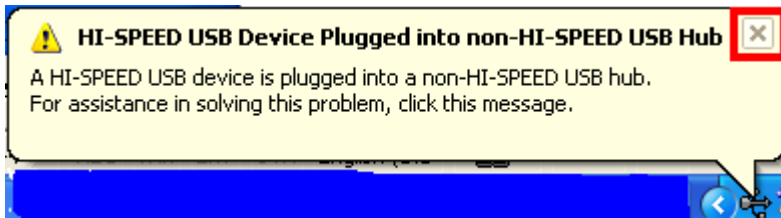


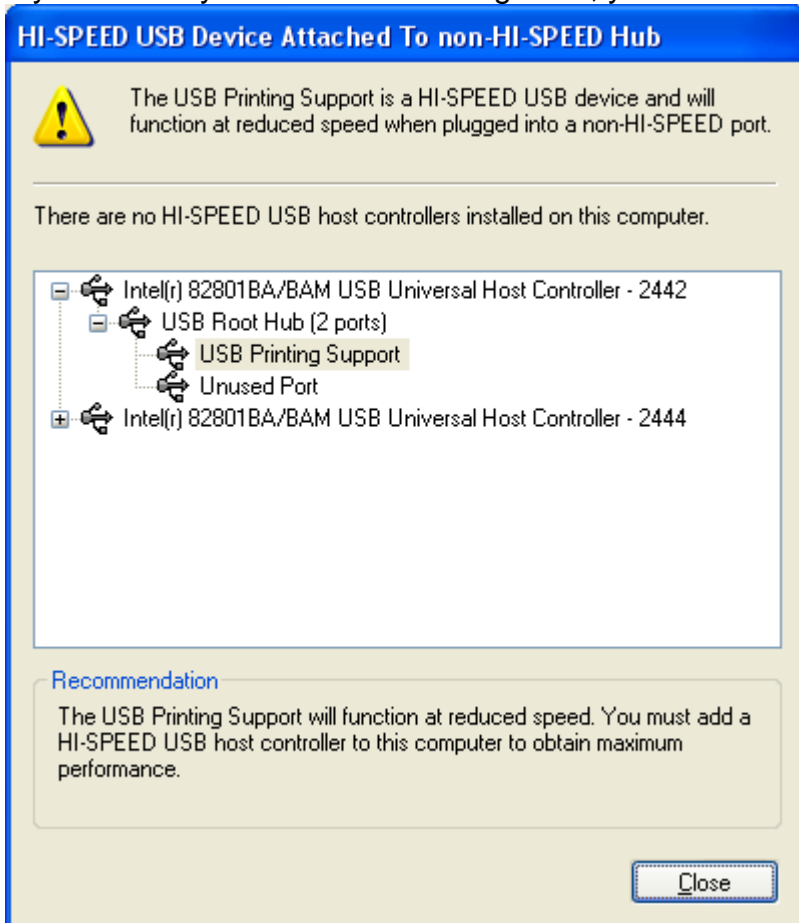
EPSON PRODUCT SUPPORT BULLETIN

Date:	03/18/2004	Originator:	TC
PSB #:	PSB.2004.04.004	Authorization:	
Reference:	N/A	Total Pages:	1
Product(s):	Stylus Photo 2200/R300/R300M/R800/RX500/RX600, and the Stylus CX6400		
Subject:	Windows XP warning message for HI-SPEED USB (USB 2.0) Devices		

This bulletin was created to inform you of a Windows XP warning message that comes up when an EPSON HI-SPEED USB (USB 2.0) Printer or All-in-One device is connected to a non-HI-SPEED USB (USB 1.1) Port. The message is only an indication that Windows XP recognizes a USB 2.0 device is connected to a USB 1.1 port. This warning message appears the first time the printer is connected to the computer, and every time the printer is powered on. It is NOT an error message. The message cannot be disabled, but you can close it by clicking on the “X” as shown in the red box below.



If you click anywhere in the message box, you will see the screen below:



Click on the “Close” button to close the window.

EPSON PRODUCT SUPPORT BULLETIN

Date:	04/23/2003	Originator:	JAM
PSB #:	PSB.2003.05.007	Authorization:	Kps
Reference:	N/A	Total Pages:	2
Product(s):	Epson Stylus Photo 2200 printer and 802.11b Wireless Print Server		
Subject:	Stylus Photo 2200 printer not available in OS X Print Center		

This bulletin was created to inform you of a firmware update required for the EpsonNet 802.11b Wireless Print Server.

Reasons:

If any existing OS X system is updated to version 10.2.3, the Epson Stylus Photo 2200 printer cannot be found in the Apple Print Center.

Recommendations:

Verify the current version of the firmware on the Print Server. If the version is 3.96 or lower, update the firmware to 3.99 using the instructions listed below.

How to verify the firmware version:

Print a status sheet from the print server. On the third line of the status sheet the firmware version will be listed as follows:

FW Ver. WLES-**3.96** (2002.06.05)

File location:

The firmware update file, epon10651.sea.hqx, and this bulletin are posted on the Epson website; <http://www.epson.com>.

Updating the firmware:

- 1.) Configure the Mac and the print server for TCP/IP.
- 2.) Download/copy the "**WLEP399.bin**" firmware file from the epson10651.sea.hqx to the Apple Desktop.
- 3.) Navigate to **Macintosh HD>Applications>Utilities>Terminal**
- 4.) At the terminal screen do the following:

1. Type **cd desktop** then press the RETURN key
2. Type **ftp <ipaddress*** of the print server> then press the RETURN key
3. At the **ftp>** prompt, type **binary** then press the RETURN key
4. At the **ftp>** prompt, type **put <WLEP399.bin**>** then press the RETURN key

*Where **ipaddress** is the IP address of the Wireless print server. Examples 135.79.2.468 or 10.0.1.3

Where **WLEP399.bin is the filename of the 3.99 firmware update.

5. You will get a message on the screen, at the **TFTP>** prompt, that a number of bytes were sent. This means the update is complete.
- 5.) Next, go to the print server and perform a reset, then launch WP-Admin again to setup the print server. At WP-Admin in the search screen, click on **CLEAR**, then click on **START** for the print server to reappear. Finish the print server configuration, then Quit WP-ADMIN.

Search for the printer:

Once the update is complete, open the Print Center.

Select ADD Printer and choose Epson AppleTalk. This will allow you to select the Stylus Photo 2200 printer.

EPSON PRODUCT SUPPORT BULLETIN

Date:	04/23/2003	Originator:	JAM
PSB #:	PSB.2003.05.007	Authorization:	Kps
Reference:	N/A	Total Pages:	2
Product(s):	Epson Stylus Photo 2200 printer and 802.11b Wireless Print Server		
Subject:	Stylus Photo 2200 printer not available in OS X Print Center		

This bulletin was created to inform you of a firmware update required for the EpsonNet 802.11b Wireless Print Server.

Reasons:

If any existing OS X system is updated to version 10.2.3, the Epson Stylus Photo 2200 printer cannot be found in the Apple Print Center.

Recommendations:

Verify the current version of the firmware on the Print Server. If the version is 3.96 or lower, update the firmware to 3.99 using the instructions listed below.

How to verify the firmware version:

Print a status sheet from the print server. On the third line of the status sheet the firmware version will be listed as follows:

FW Ver. WLES-**3.96** (2002.06.05)

File location:

The firmware update file, epon10651.sea.hqx, and this bulletin are posted on the Epson website; <http://www.epson.com>.

Updating the firmware:

- 1.) Configure the Mac and the print server for TCP/IP.
- 2.) Download/copy the "**WLEP399.bin**" firmware file from the epson10651.sea.hqx to the Apple Desktop.
- 3.) Navigate to **Macintosh HD>Applications>Utilities>Terminal**
- 4.) At the terminal screen do the following:

1. Type **cd desktop** then press the RETURN key
2. Type **ftp <ipaddress*** of the print server> then press the RETURN key
3. At the **ftp>** prompt, type **binary** then press the RETURN key
4. At the **ftp>** prompt, type **put <WLEP399.bin**>** then press the RETURN key

*Where **ipaddress** is the IP address of the Wireless print server. Examples 135.79.2.468 or 10.0.1.3

Where **WLEP399.bin is the filename of the 3.99 firmware update.

5. You will get a message on the screen, at the **TFTP>** prompt, that a number of bytes were sent. This means the update is complete.
- 5.) Next, go to the print server and perform a reset, then launch WP-Admin again to setup the print server. At WP-Admin in the search screen, click on **CLEAR**, then click on **START** for the print server to reappear. Finish the print server configuration, then Quit WP-ADMIN.


Search for the printer:

Once the update is complete, open the Print Center.

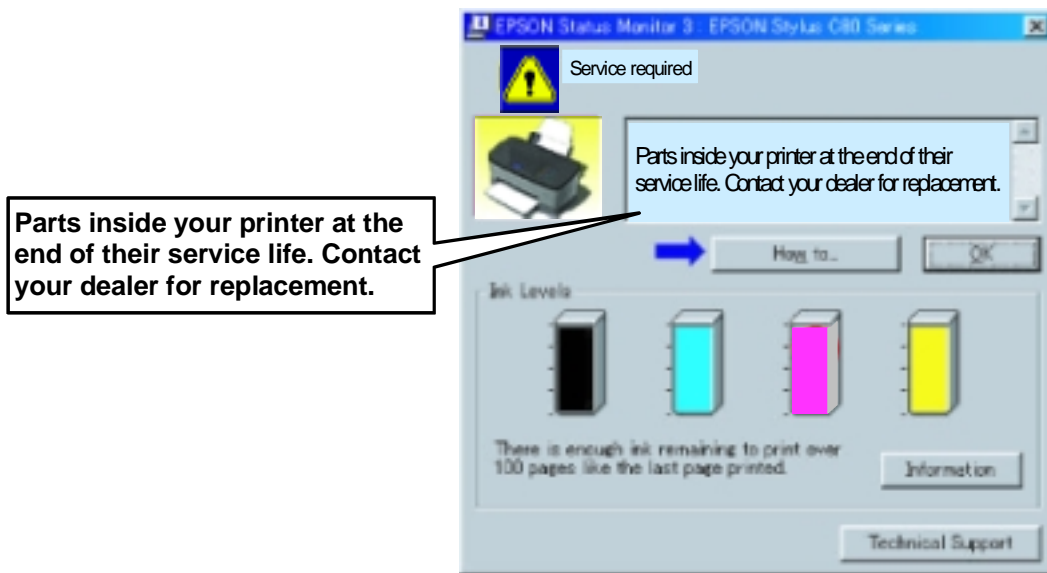
Select ADD Printer and choose Epson AppleTalk. This will allow you to select the Stylus Photo 2200 printer.

EPSON PRODUCT SUPPORT BULLETIN

Date: 1/10/2003
PSB #: PSB.2003.01.001
Reference: TE02-442
Product(s): Stylus C80, C82, CX5200, Stylus Photo 960, 2200
Subject: Maintenance request message

Originator: PH
Authorization: 
Total Pages: 1

This bulletin was created to inform you of the maintenance request message. When the following message appears, the waste ink pads inside the printer are full and need to be replaced. You should take the unit to your local servicer to do the replacement.



For information on finding your nearest authorized servicer contact Epson at 1-800-922-8911 or go to WWW.EPSON.COM.