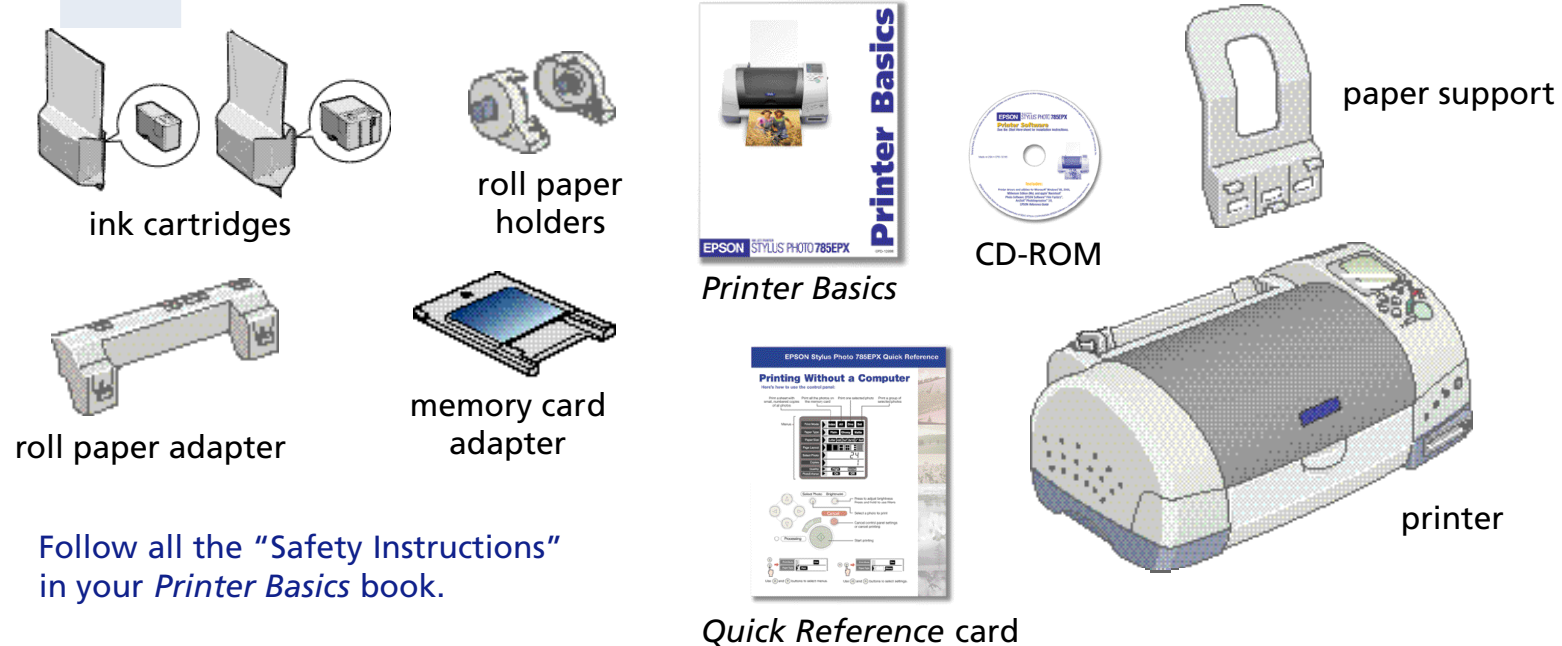


EPSON Stylus® Photo 785EPX

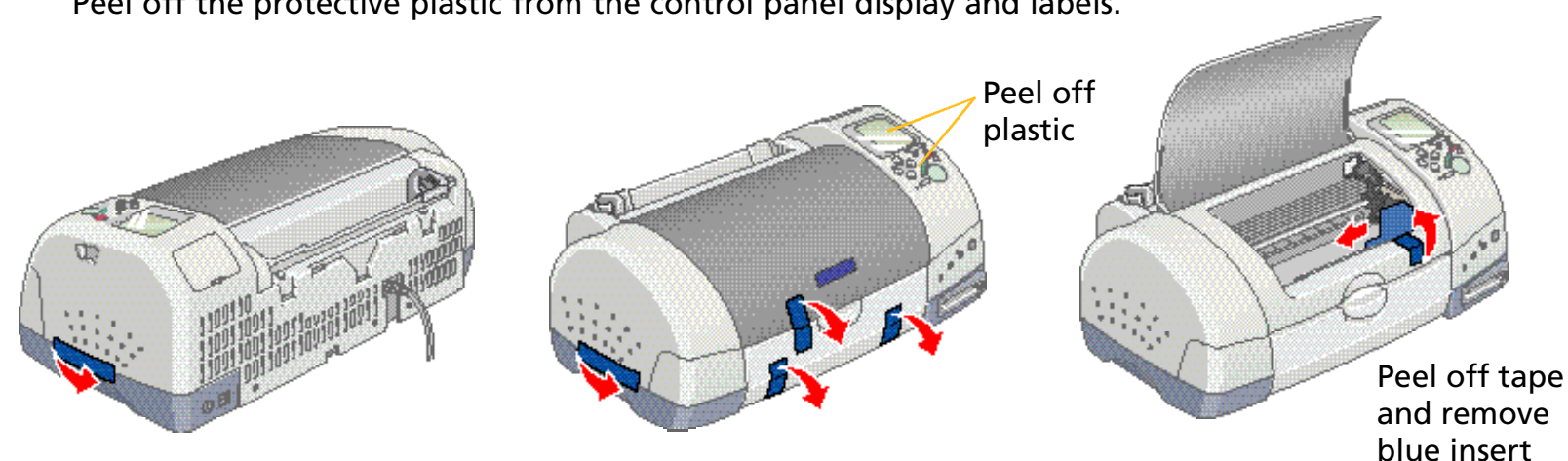
Start Here

1 Unpack Everything

- 1 Remove everything from the box.



- 2 Remove all the tape and packing material from the printer. Be sure to check inside and all around the printer for tape and other packing material. Peel off the protective plastic from the control panel display and labels.

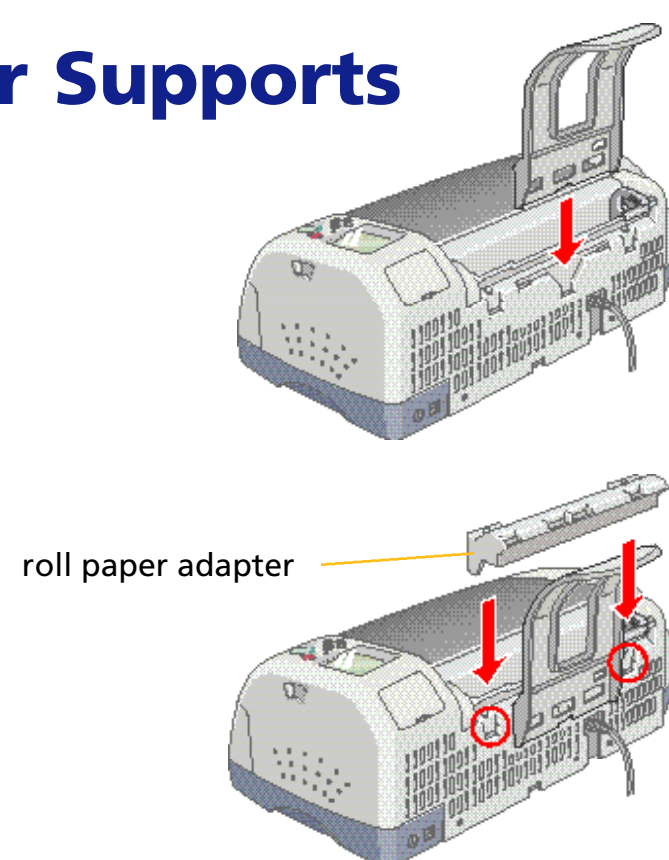


- 3 Make sure you've got a USB cable to connect the printer to your computer (not included). See "System Requirements" in your *Printer Basics* book.

2 Put on the Paper Supports

- 1 Insert the paper support into the slots on the back of the printer.

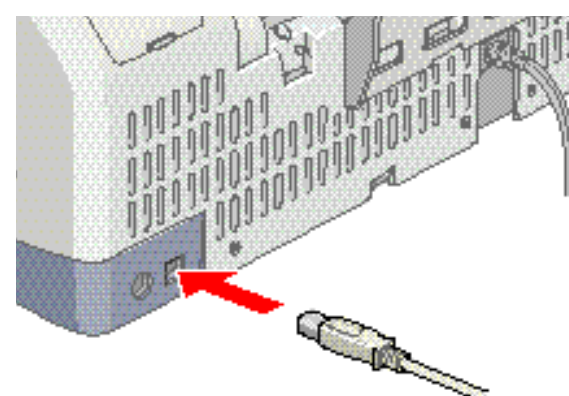
- 2 Insert the roll paper adapter into the slots on the back of the printer.



For information on loading and using roll paper, see your *Printer Basics* book.

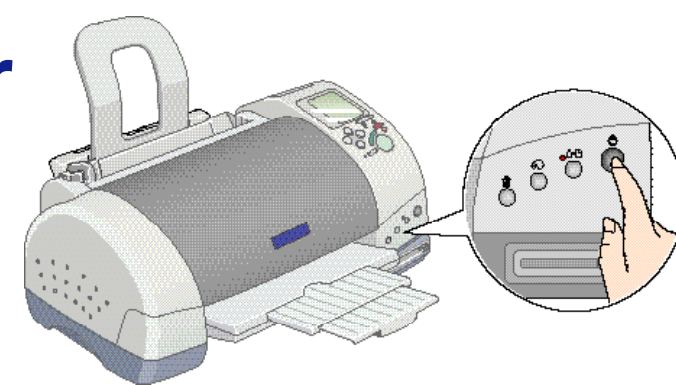
3 Connect the Printer to Your Computer

- 1 Make sure the printer and computer are turned off.
- 2 Connect the (square) end of the USB cable to your printer's USB port.
- 3 Connect the (flatter) end of the cable to your computer's USB port.



4 Turn On the Printer

- 1 With the printer and computer still turned off, plug the printer's power cord into a grounded electrical outlet.



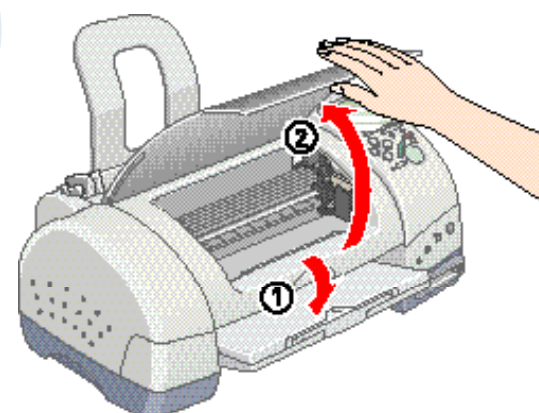
- 2 Press the silver power button to turn on the printer. The green **Processing** light flashes and the red error light comes on. The ink cartridge holders move left.



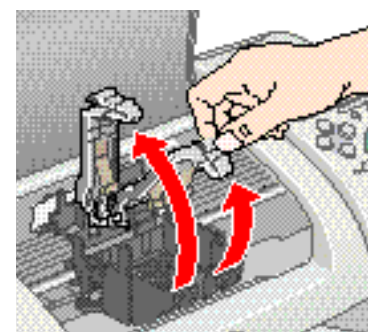
Always use the power button to turn the printer on or off. Never use an external switch, such as a power strip switch or wall switch.

5 Install the Ink Cartridges

- 1 Lower the output tray and open the cover.



- 2 Lift up the two ink cartridge clamps.

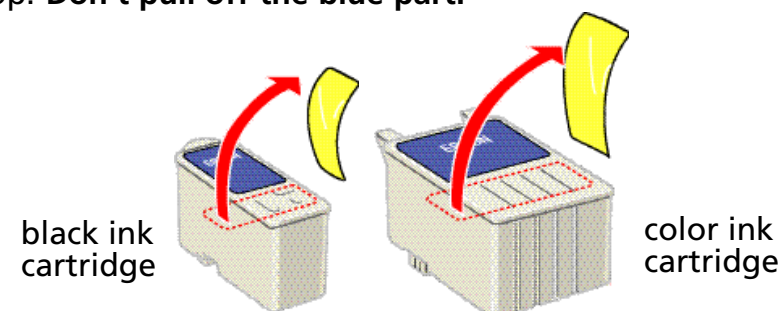


Install both ink cartridges, and leave them installed for all types of printing, or the printer won't work.

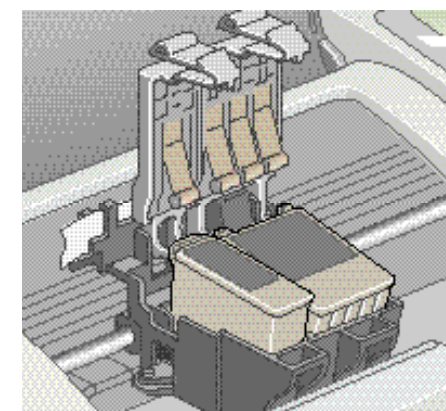
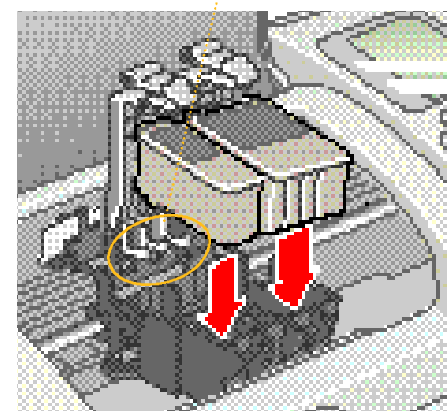


Keep ink cartridges out of the reach of children and do not drink the ink. If ink gets on your skin, wash the area thoroughly with soap and water. If ink gets in your eyes, flush them immediately with water.

- 3 Unwrap the ink cartridges, then remove only the yellow part of the tape seal on top. Don't pull off the blue part.



- 4 Tilt each cartridge toward you as you lower it. Make sure the tabs rest on the **hooks** as shown.

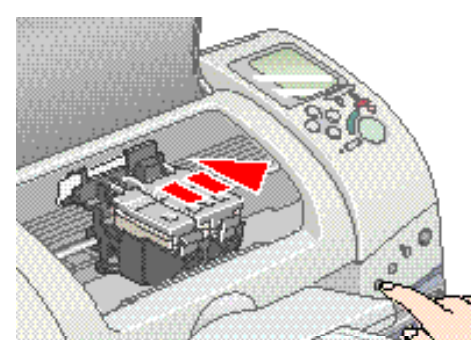


Don't place the cartridge tabs under the hooks; you may damage the clamp when you close it.



- 5 Lower the clamps so they snap shut.

- 6 Press the ink replacement button and close the printer cover.



Ink charging takes about two minutes. You will see the lights flash and hear the printer make noise. Don't turn off the printer during this process or you'll waste ink.



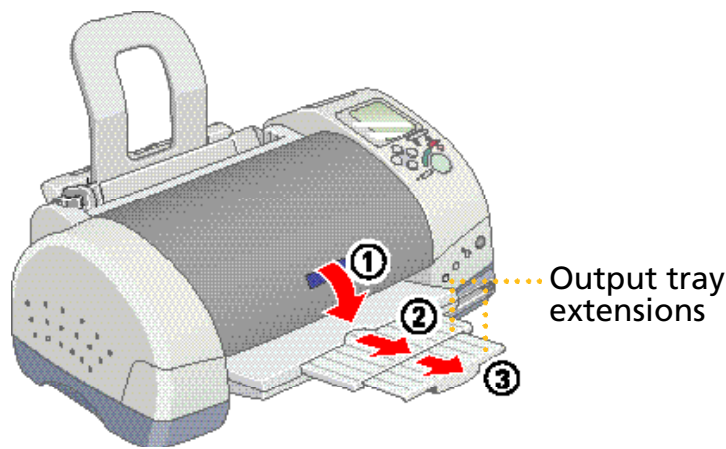
Never turn off the printer when the green **Processing** light is flashing, unless the printer hasn't moved or made any noise for more than 5 minutes.

Turn over

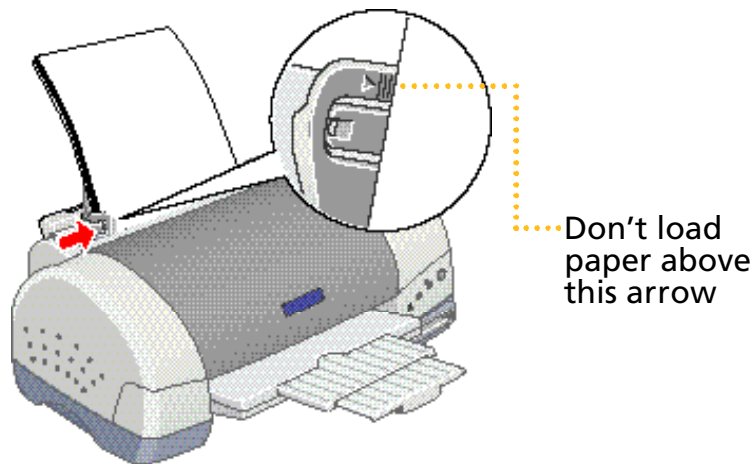
Continued...

6 Put in Paper

- 1 Pull out the output tray extensions.



- 2 Load paper against the right side of the feeder. Slide the left edge guide against the paper.



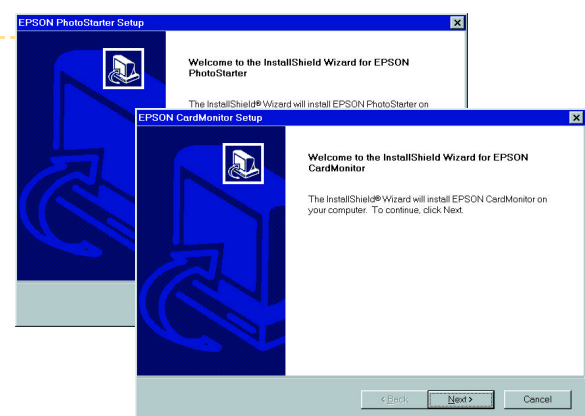
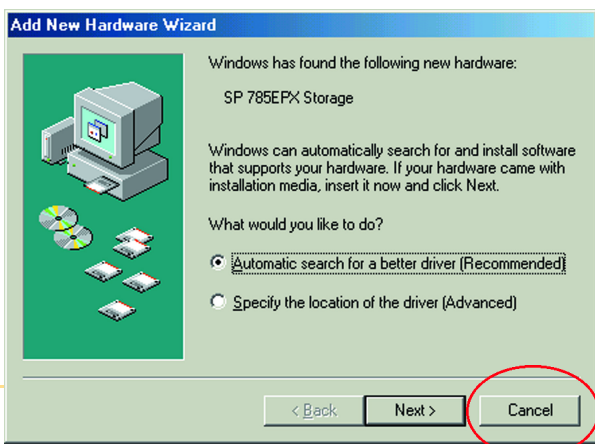
7 Install the Printer Software

Locate the CD-ROM that came with your printer and carefully follow these steps to install the printer software.

Windows 98 or Me

NOTE If you're using Windows 2000, see your *Printer Basics* book for installation instructions.

- 1 Turn off your printer. Then turn on your computer and wait until you see your desktop icons.
- 2 Now turn on your printer. You see a series of messages.
*When you see The New Hardware Wizard, click **Cancel**. You'll have to do this twice.*
- 3 Insert the printer software CD-ROM in your drive.
- 4 Double-click **My Computer** on your screen.
- 5 Double-click **EPSON**.
- 6 Double-click **EPSON** to start the installer.
- 7 Read the license agreement and click **Agree**. You see the Main Menu.
- 8 Click **Install Printer Driver**. You see the printer model window.
- 9 Click **OK**. The installer copies files and displays a series of windows. Follow the instructions on the screen.
- 10 When setup is finished, click **OK**. You see the EPSON PhotoStarter Setup.
- 11 Click **Next** and follow the on-screen instructions. Do the same thing when you see the EPSON CardMonitor Setup.
- 12 When setup is finished, select **Yes** to restart your computer and click **Finish**. Leave in the CD-ROM as your computer restarts.



Now you're ready to register your printer, install your photo software (optional), and check out your on-screen *Reference Guide*. **Go to number 8.**



Macintosh

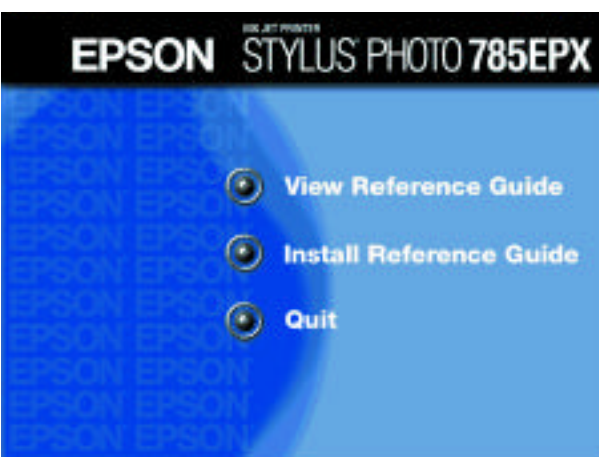
- 1 Make sure your printer is turned on, then turn on your Macintosh and wait until you see your desktop icons.
NOTE If you see a message that you need to install software for a USB device, click **Cancel**.
- 2 Insert the printer software CD-ROM in your drive.
- 3 Double-click **EPSON** in the CD-ROM folder. (If your CD-ROM folder doesn't open automatically, double-click the **EPSON** icon on your desktop.)
- 4 Read the license agreement and click **Agree**. You see the Main Menu.
- 5 Click **Install Printer Driver**.
- 6 At the next window, click **Start**. Follow the instructions to install your printer driver and utility programs, and restart your Macintosh.
- 7 Open the Chooser from the Apple menu.
- 8 Click the **SP 785EPX** icon, then click your **USB port** icon. Turn on background printing, if you want.
- 9 Close the Chooser. Leave in the CD-ROM.



Now you're ready to register your printer, install your photo software (optional), and check out your on-screen *Reference Guide*.

8 Register and Install Optional Software

- 1 After restarting your system, you see the Main Menu. If you don't see the Main Menu, close any open windows and do one of the following:
Windows: Double-click the **EPSON** icon. (You may have to double-click **My Computer** and the **EPSON CD-ROM** icon to see the **EPSON** icon.)
Macintosh: Double-click the **EPSON** icon in the **EPSON CD-ROM** folder.
- 2 Click **Register Your EPSON Printer**.
- 3 Follow the on-screen instructions to register your printer. At the last screen, click **Done**.
- 4 At the Main Menu, click **Install Optional Photo Software**. You see this menu:
- 5 Click the buttons to learn more about the programs. If you want the program, click **Install** and follow the instructions on the screen.
- 6 When you're finished installing software, click **Back** to return to the Main Menu.
- 7 Now click **View Reference Guide**. You see this menu:
NOTE If you don't have an Internet browser, such as Netscape™ or Microsoft® Internet Explorer (versions 3.0 or later), you won't be able to view the on-screen manual.
- 8 Click **View Reference Guide** to open the on-screen manual. To copy it to your computer, click **Install Reference Guide** and follow the instructions.
- 9 When you're finished, close your browser and click **Quit**. Then click **Exit** to close the Main Menu. Remove the CD-ROM.



9 Print a Photo

Now that you've set up your printer, you're ready to print. See your *Printer Basics* book or *Quick Reference* card for instructions.



EPSON and EPSON Stylus are registered trademarks of SEIKO EPSON CORPORATION. General Notice: Other product names used herein are for identification purposes only and may be trademarks of their respective owners. EPSON disclaims any and all rights in those marks. Copyright © 2001 by Epson America, Inc.