

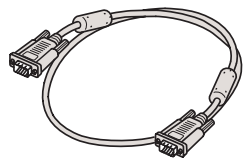
START HERE

## Connect the projector to your laptop

For most setups, you'll need just these two cables:



Power cord

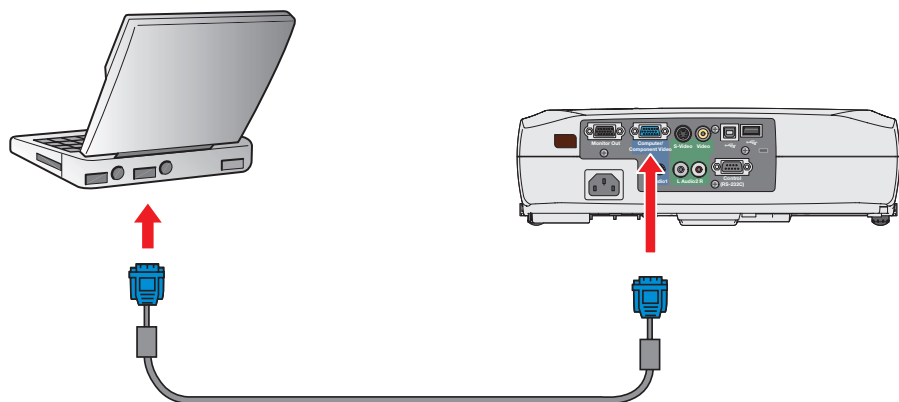


Computer cable




**1** Make sure your projector and laptop are turned off.

**2** Connect one end of the computer cable to the **Computer/Component Video** port on the projector.



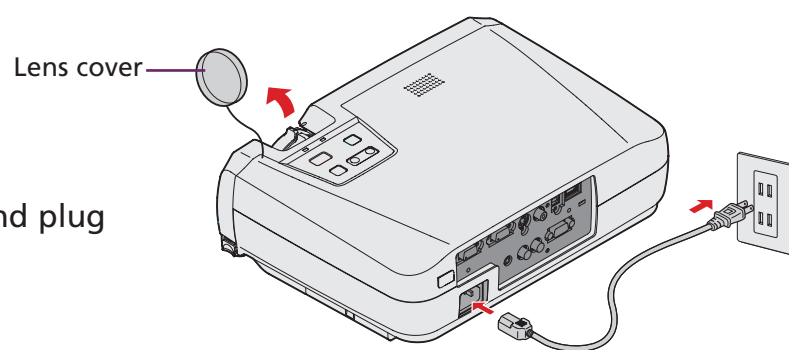
Follow these instructions to connect the projector to your laptop. To connect other devices, such as a VCR, DVD, or desktop PC, see your *User's Guide*.

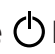
**3** Connect the other end to your laptop's video or  monitor port. If you can't connect the cable to your PowerBook®, you may need to use an adapter. See your *User's Guide* for instructions.

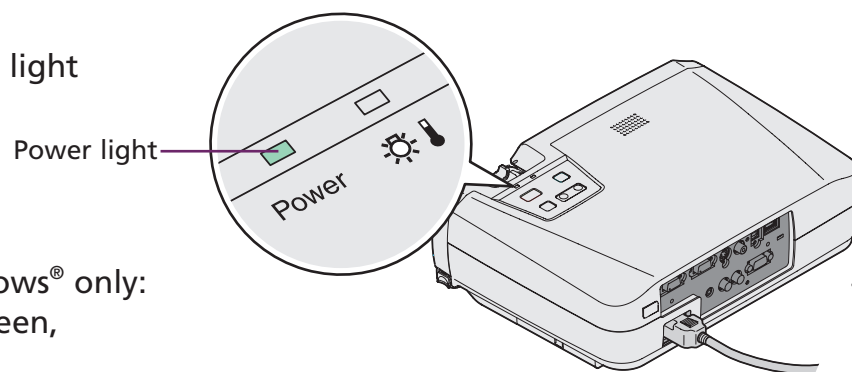
## Turn on your equipment

**1** Remove the lens cover.

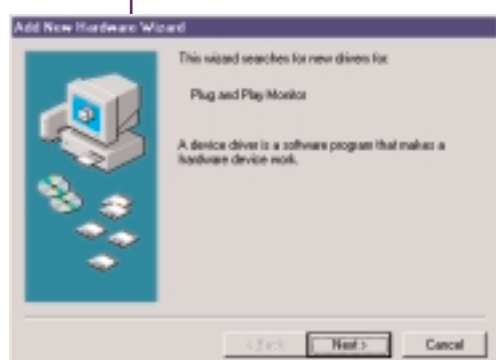
**2** Connect the power cord to your projector and plug the other end into an electrical outlet.



**3** Press the  **Power** button. The Power light flashes green, and then stays on.

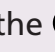


**4** Turn on or restart your laptop. (Windows® only: If you see this Add New Hardware screen, click **Cancel**.)



### Caution: Before unplugging the projector...

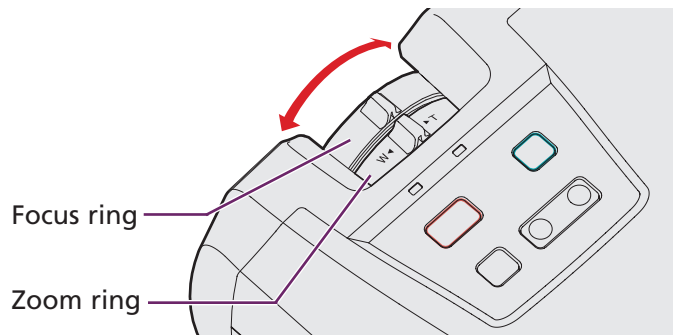
To shut the projector down properly:


1. Press the  **Power** button twice. Let the projector cool while the Power light flashes orange (about 45 seconds).
2. Once the light stops flashing and stays on, it's safe to unplug the projector.

Never unplug the projector when the Power light is green or flashing orange.

# Adjust the image

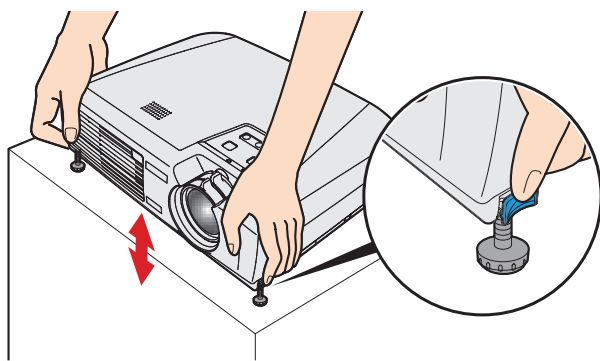
- 1 Rotate the focus ring to sharpen the image.







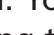

**Note:** If you see a blank screen , see the instructions to the right.

- 2 Rotate the zoom ring to reduce or enlarge the image. Turn to **W** (wide) to enlarge or **T** (tele) to reduce. (You can also move the projector closer to or farther from the screen.)

- 3 To raise the image, press the foot release levers inward and lift the front of the projector. Once the image is positioned where you want it, release the levers to lock the feet in position.



- 4 If your image looks like  or , you've placed the projector off to one side of the screen, at an angle. Move it directly in front of the center of the screen, facing the screen squarely.

- 5 If your image looks like  or , the Auto Keystone correction feature has been disabled. You can manually adjust the keystone correction value by pressing the  or  side of the **Keystone** button on the projector. Or, to re-enable Auto Keystone correction, refer to your *User's Guide*.

# Where to get help

## Telephone Support Services

To use the EPSON PrivateLine® Support service, call (800) 637-7661 and enter the PIN on the EPSON PrivateLine Support card included in your owner's kit. This service is available 6 AM to 6 PM, Pacific Time, Monday through Friday, for the duration of your warranty period. You may also speak with a projector support specialist by dialing one of these numbers:

**U.S.:** (562) 276-4394, 6 AM to 6 PM, Pacific Time, Monday through Friday  
**Canada:** (905) 709-3839, 6 AM to 6 PM, Pacific Time, Monday through Friday

Toll or long distance charges may apply.

## Electronic Support Services

EPSON provides technical assistance through electronic support services 24 hours a day at <http://support.epson.com>. For tips, templates, and training for developing successful presentations go to <http://www.presentersonline.com>.


# If you see a blank screen


If you see a blank screen or the **No signal** message after turning on your laptop, check the following:



- Make sure the Power light on the projector is green and not flashing and the lens cover is off.
- Try turning off the laptop and restarting it.
- If you've connected more than one computer and/or video source, you may need to press the **Source** button on top of the projector. (Allow a few seconds for the projector to sync up after pressing it.)

## If you're using a Windows laptop:

- Hold down the **Fn** key and press the function key that lets you display on an external monitor. It may have an icon such as , or it may be labelled **CRT/LCD**. Allow a few seconds for the projector to sync up after pressing it.

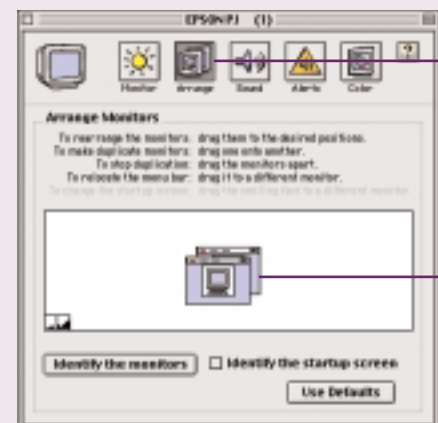
On most systems, the  or **CRT/LCD** key lets you toggle between the LCD screen and the projector, or display on both at the same time.

- You might need to use the Display utility in the Control Panel to enable both the LCD screen and external monitor port. Check your laptop's manual or online help for details.

## If you're using a Macintosh® PowerBook®:

### OS 9.x or earlier:

1. From the Apple® menu, select **Control Panels**, then click **Monitors** or **Monitors and Sound**.
2. Click **Arrange**.



Click here

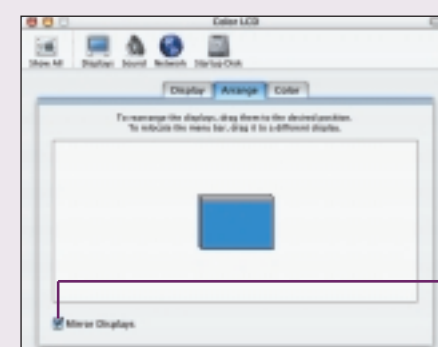
Drag one monitor icon on top of the other

3. Drag one monitor icon on top of the other. This lets you display on the projector screen as well as the LCD screen.

If the **Arrange** option isn't available, you may need to select one of the Simulscan resolution settings. See your *User's Guide* for instructions.

### OS X:

1. From the Apple menu, select **System Preferences**, then click **Displays**.
2. Select **VGA Display** or **Color LCD**, click **Arrange** or **Arrangement**, and click **Mirror Displays**.



Click here