

EPSON PRODUCT SUPPORT BULLETIN

Date:	8/30/2007	Originator:	DS
PSB #:	PSB.2007.08.001	Authorization:	<i>Kps</i>
Reference:	N/A	Total Pages:	1
Product(s):	Epson Projectors with an HD-15 VGA Analog/Component Input		
Subject:	Elmo HV-110XG Document Camera and Projector Compatibility		

This bulletin was created to inform you of an operational issue with the Elmo HV-110XG Document Camera when initially connected to an Epson projector.

Problem:

When attempting to use the Elmo HV-110XG Document Camera connected via the VGA HD15 connection to display content from its document bed. When connected to the projector, the projector displays only the **Blue Screen - No Signal** message and will blink off and on or display just the Blue Screen - No Signal message. When a computer is connected to the Elmo HV-110XG Document Camera and switched to Pass-Through mode, the computer image is displayed correctly by the projector. When switching back to the document table source of the Elmo HV-110XG Document Camera, the problem returns. The Elmo HV-110XG Document Camera puts out a Progressive Scan 20fps signal to the projector's VGA Analog port. This signal is detected at 15 kHz Vertical and 291.8 kHz Horizontal frequencies which are beyond projector sync specifications.

Solution:

With the Elmo HV-110XG Document Camera powered on and connected to the projector via the VGA computer cable, access the **Computer1/Computer2** setting in the projector menu system and select the **Component** setting within the appropriate connection. This will allow the Elmo HV-110XG Document Camera and projector to sync and the projector to display the image of the document camera bed and its contents. However, the image will have a pink cast. To eliminate the pink cast, change the projector setting from Component to **RGB** then to **Auto** and exit from the menu. The projected image will now look normal. This will now allow the Elmo HV-110XG Document Camera to sync and display the image properly to any other connected Epson projector without having to change the projector settings.

EPSON PRODUCT SUPPORT BULLETIN

Date:	10/08/2004	Originator:	DS
PSB #:	PSB.2004.10.002	Authorization:	Kps
Reference:	TI 04-46e Rev. A	Total Pages:	14
Product(s):	EMP NS Connection, EMP Network Manager, EMP Monitor, EMP Multi Screen Adjustment, Cinema Color Editor, VCOM Driver		
Subject:	Evaluation results of Epson Projector PC applications tested in Windows XP with SP2.		

The purpose of this bulletin is to provide information on Epson PC projector applications tested under the Windows XP SP2 (Service Pack2) environment.

Description:

Information is provided about the evaluation results and recommendations for Epson PC projector applications functionality in Windows XP SP2 Firewall environment.

Reason:

Compatibility testing for functionality of EMP NS Connection, EMP Network Manager, EMP Monitor, EMP Multi Screen Adjustment, Cinema Color Editor, VCOM Driver in the Windows XP SP2 environment.

Results of Windows XP SP2 installation:

Installing SP2 on PCs did not disturb the installation of the above software applications. Also, the application software can be installed on PCs where SP2 or earlier versions are installed without any issues.

The information contained in the following pages provides details for executing the applications in Windows XP SP2.

Executing the Software:

When executing the software noted below for the first time after SP2 installation completes, the following security alert messages are displayed:

[EMP NS Connection]



Security alert screen (EMP NS Connection)

[EMP Network Manager]



Security alert screen (EMP Network Manager)

[EMP Monitor]



Security alert screen (EMP Monitor)

[EMP Multi Screen Adjustment]



Security alert screen (EMP Multi Screen Adjustment)

The Security Alert screen for **EMP Multi Screen Adjustment** is shown after clicking the **Auto** button of **Network** or clicking the **Add** button after entering an IP address in the **IP Address** box.

[Cinema Color Editor]



Security alert screen (Cinema Color Editor)

The functions of the three buttons displayed in the security alert screen are explained below.

[Keep Blocking] --- Enables you to register a started application in the “**Exceptions**” program of the Windows Firewall. The network port that the application uses is blocked. By selecting this button once, this security alert message will not be shown when starting the application next time.

[Unblock] ----- Enables you to register a started application in the “**Exceptions**” program of the Windows Firewall and unblock the network port that the application uses. By selecting this option once, this security alert message will not be shown when starting the application next time.

[Ask me later]----- When you want to select both buttons above or select either one later, this button is selected. The started application is not registered in the “**Exceptions**” program of the Windows Firewall and the network that the application uses is not unblocked. However, when restarting the application, the same security alert message is shown.

- **PC applications will work normally on Windows XP with SP2 if the “Unblock Item” is selected when the security alert screen is shown.**

For the detail operation information of each application, please refer to the following:

Operating Status Report

When selecting the **Keep Blocking** button, the security alert message is closed and the main screen of each application is displayed.

[EMP NS Connection Application]

Port **3620** is necessary for searching for projectors. If this port is blocked, projectors are not detected.

The other applications operate normally. However, there is a case that execution of automatic search disables automatic detection. This occurs when projectors are registered for automatic detection in EMP Monitor before installing SP2, then the registered projectors may not be detected again after SP2 installation. Therefore it is recommended to select **Unblock** in the security alert screen.

If “**Keep Blocking**” has been selected when starting the application for the first time, and the blocking needs to be removed, complete the execution of the application and proceed with unblocking as follows:

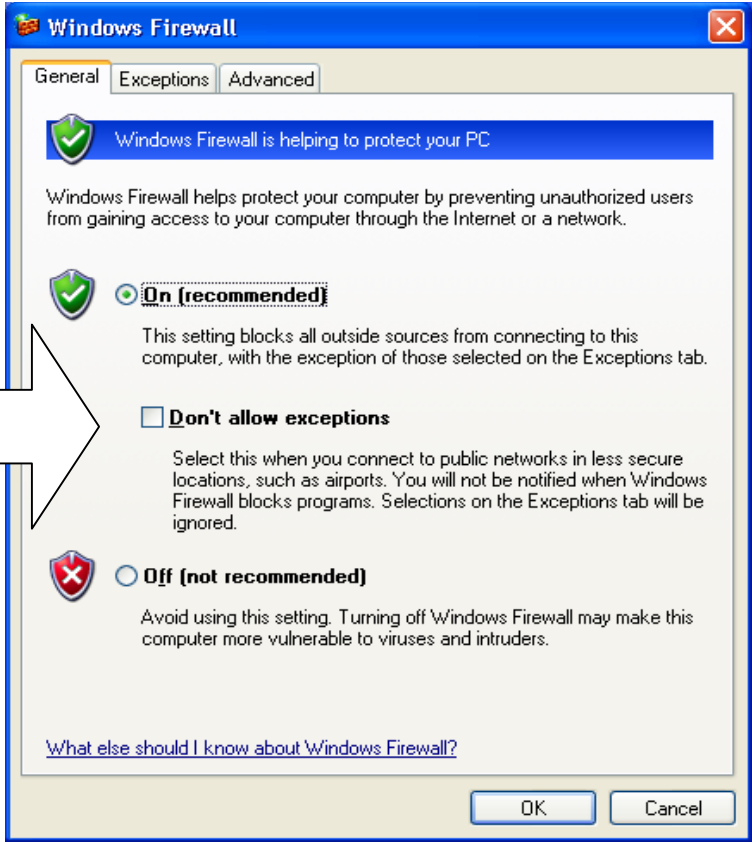
- a.) Start the Windows Security Center. Double click the icon in the shape of a shield that is always displayed on the taskbar after the installation of SP2.



Windows Security Center screen

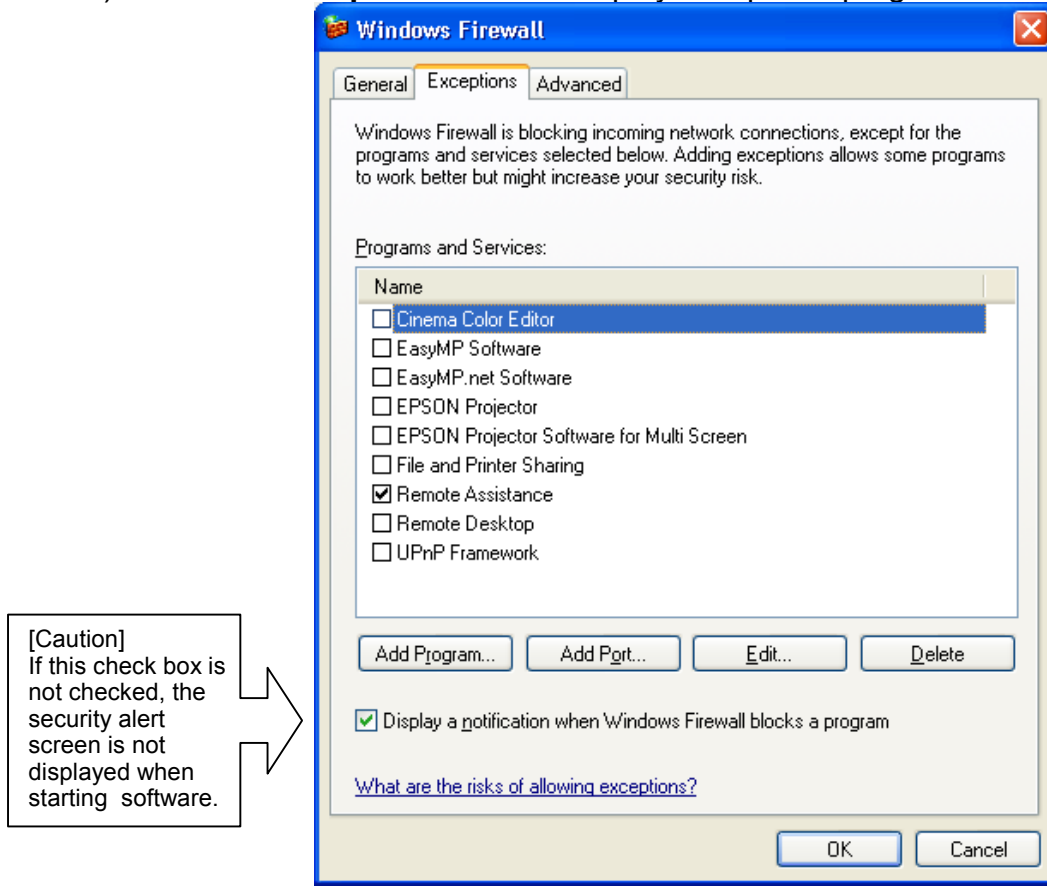
- b.) Select and start **Windows Firewall**

[Caution]
In case the check box for **Don't allow exceptions** is checked (this box is not checked at the initial setting), a network port for software is not unblocked even though the software is checked on **Exceptions**. Make sure this option is not selected.



Windows Firewall screen

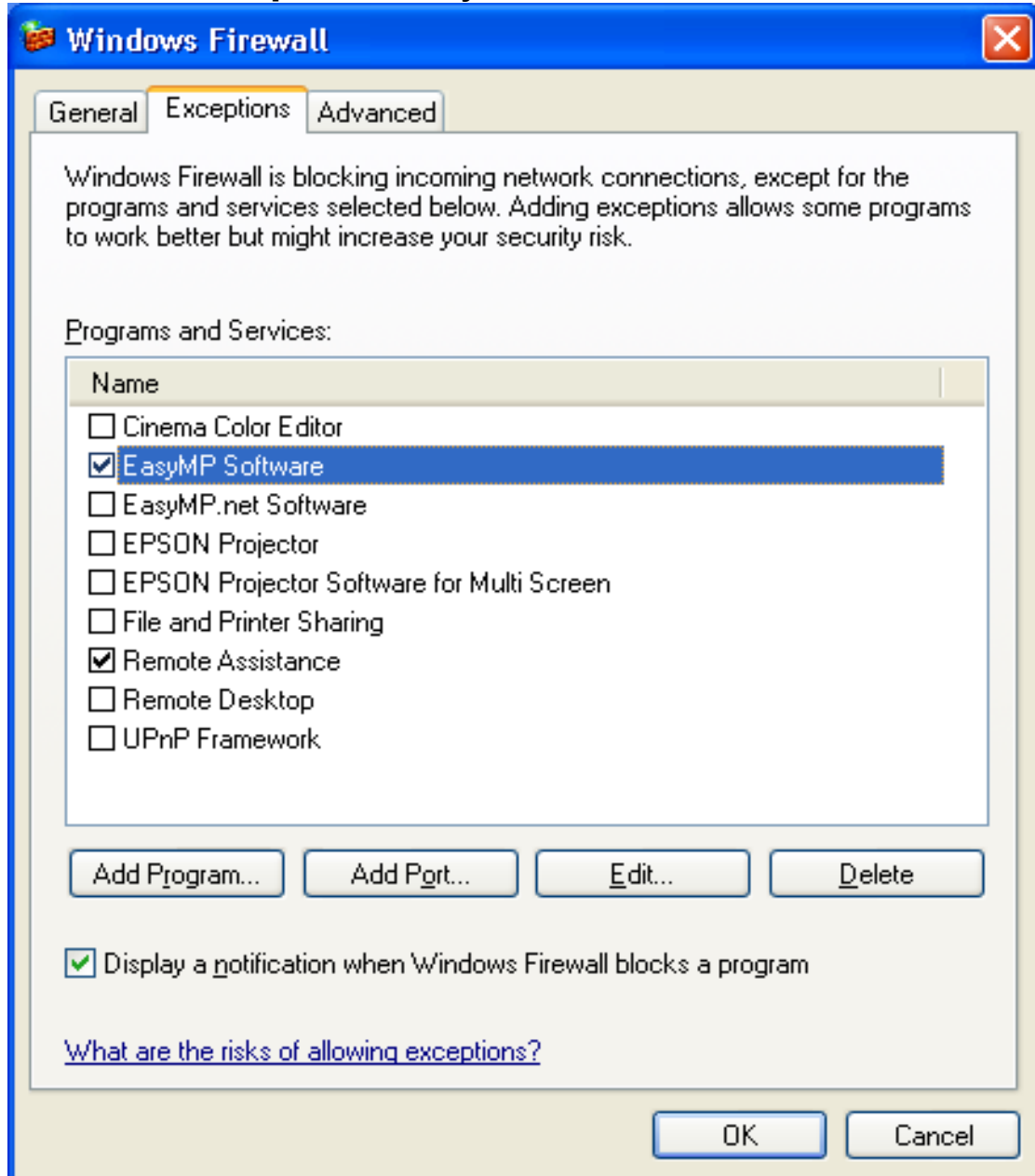
c.) Select the **Exceptions** tab and display exceptions program.



•Exceptions screen

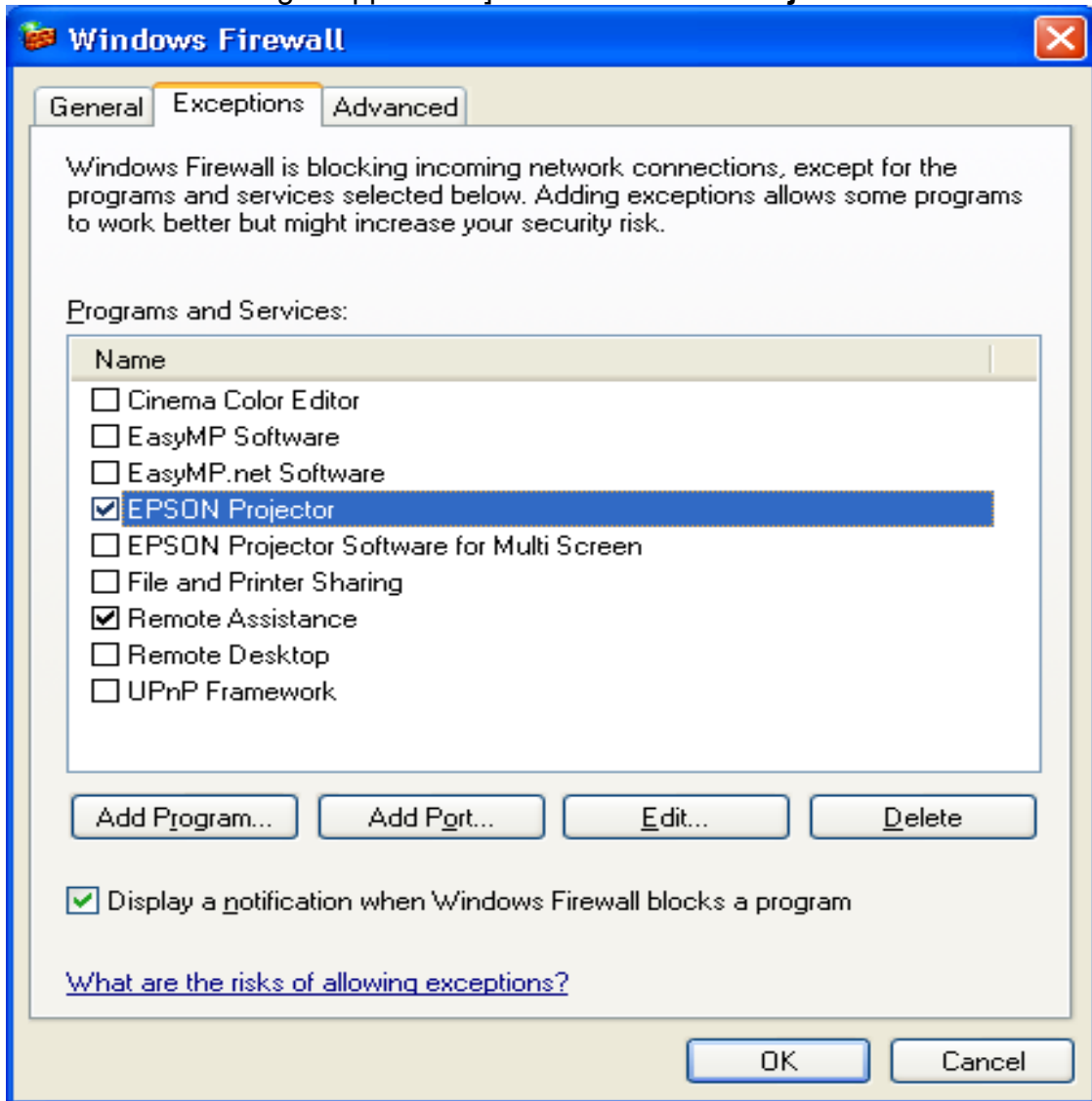
d.) Check the check boxes for the software you don't want to block.

[EMP NS Connection] • Check **EasyMP Software** box



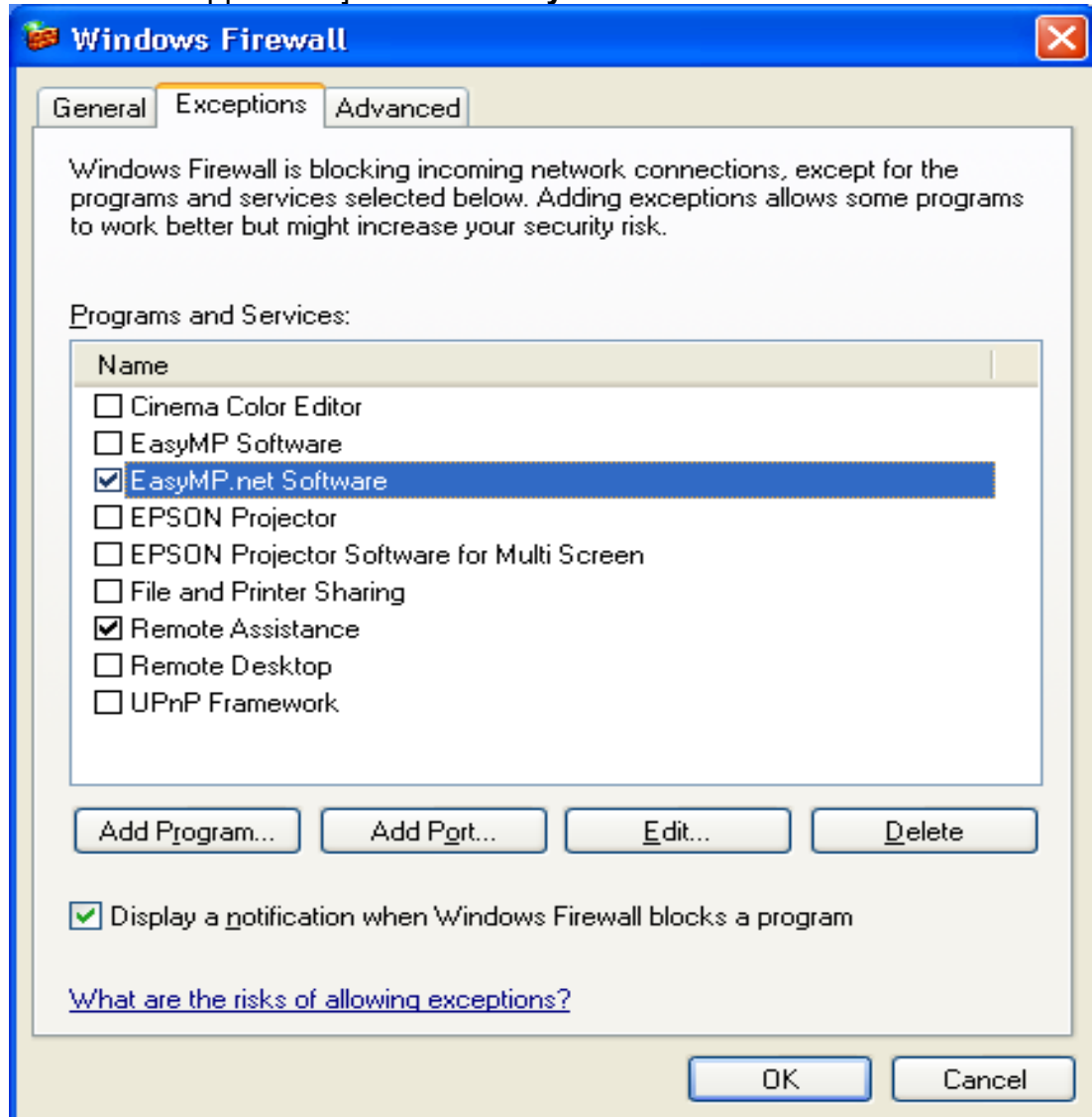
Unblock screen (EMP NS Connection)

[EMP Network Manager Application] • Check **EPSON Projector** box



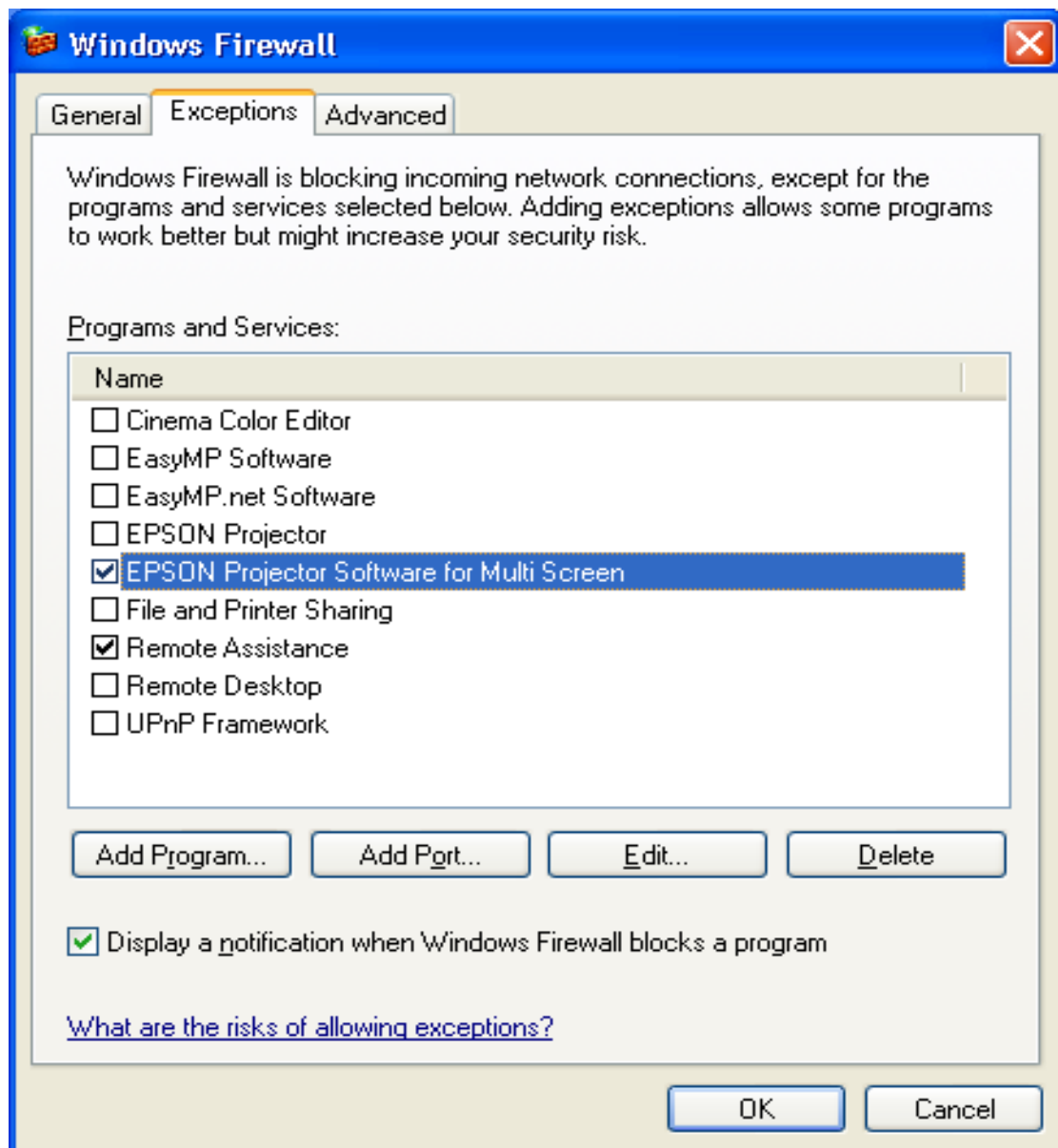
Unblock screen (EMP Network Manager)

[EMP Monitor Application]→ Check **EasyMP.net Software** box



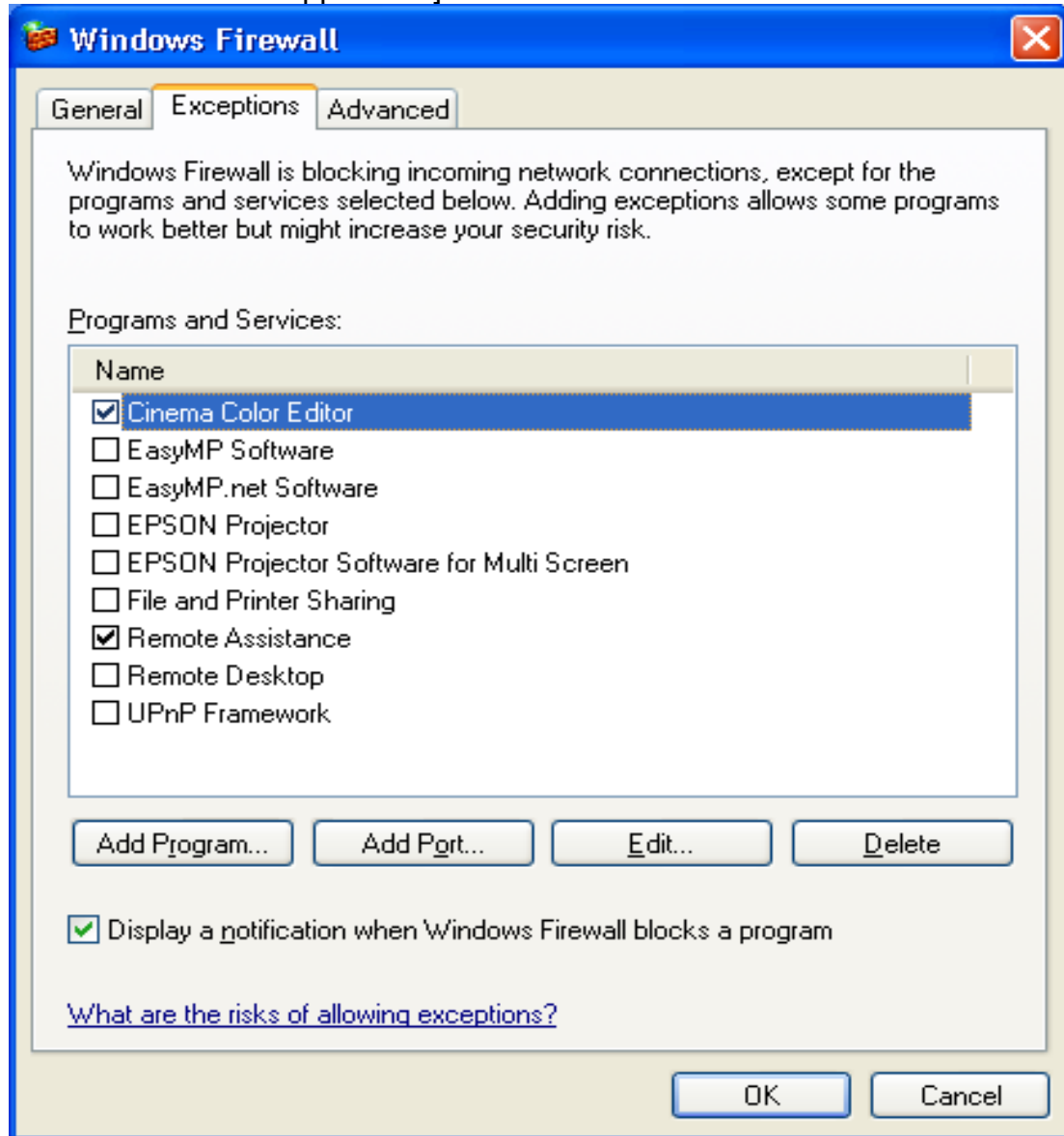
Unblock screen (EMP Monitor)

[EMP Multi Screen Adjustment Application]→ Check **EPSON Projector Software for Multi Screen** box



Unblock screen (EMP Multi Screen Adjustment)

[Cinema Color Editor Application] ---> Check **Cinema Color Editor**.



Unblock screen (Cinema Color Editor)

By following the above procedure, the network port that each application uses is unblocked and they can operate normally.

Corresponding program name to PC applications

PC Application	Program name
EMP NS Connection	EasyMP Software
EMP Network Manager	EPSON Projector
EMP Monitor	EasyMP.net Software
EMP Multi Screen Adjustment	EPSON Projector Software for Multi Screen
Cinema Color Editor	Cinema Color Editor

When selecting the **Unblock** button:

The Security Alert screen is closed and the main screen is displayed. Then the search result is displayed.

When selecting the **Ask Me Later** button:

Port **3620** which is used by EMP NS Connection and is necessary for discovering projectors is blocked, and projectors are not detected.

The other applications operate normally. However, there is a case where execution of automatic search disables automatic detection. This occurs when projectors are registered for automatic detection in EMP Monitor before installing SP2, the registered projectors may not be detected after SP2 installation.

VCOM Driver

The following message is shown after the VCOM driver is installed on your PC. Select “No, not this time” item and continue the Plug&Play of the device.



8.) Notes:

When you add the program to Exceptions list, the program can receive network communication from outside. This may cause a security risk such as exposure to a virus attack.