

Epson Projector Control User's Guide

The Epson® Projector Control software lets you control the projector over a wired or wireless network from a computer running Windows® 2000 SP4, XP SP2 32-bit, or Windows Vista™ 32-bit. It enables you to perform operations, such as turning the projector on/off and switching sources, from your computer without using the projector's remote control.

Note: Macintosh® systems are not supported.

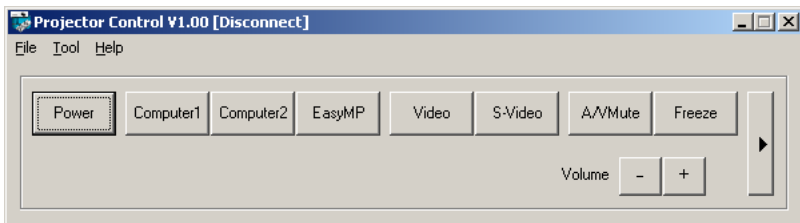
To install the Projector Control software, double-click the installer icon and follow the on-screen instructions.

Make sure the following requirements are met before starting the Projector Control software:

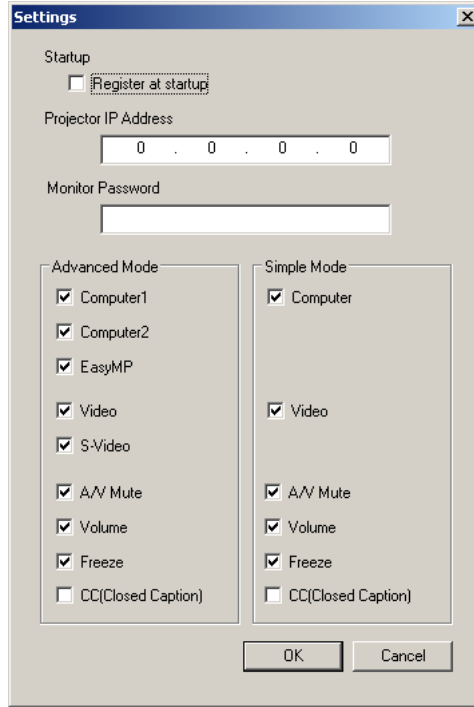
- The Projector Control software is installed on your computer
- Your computer and the projector are connected to the same network and you can access the projector
- The Network setting in the projector's menu is set to On

Connecting to the Projector

1. In Windows, click **Start > Programs > EPSON Projector > Projector Control**. You see a window like this:



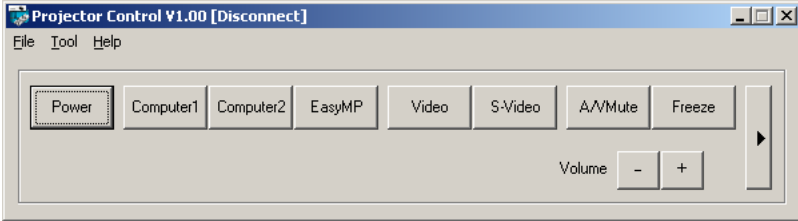
2. Select **Settings** from the **Tool** menu. You see a window like this:



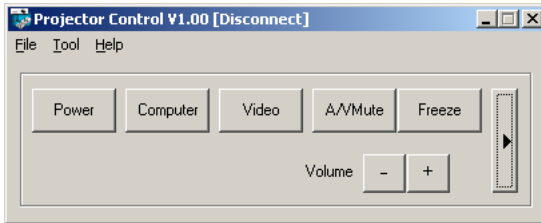
3. Select **Register at startup** if you want the Projector Control software to start automatically when your computer starts up.
4. Enter the IP address for the projector in the Projector IP Address field.
You cannot connect to the projector without entering a Projector IP Address. See your projector's documentation for information on obtaining your projector's IP address.
5. Enter the Web Control password or the password that was set using the Epson EMP Monitor Utility in the Monitor Password field. If you didn't set a password, don't enter anything.
6. Uncheck the boxes for the buttons that you do not want to display in Advanced and Simple Mode.
7. Click **OK** to save and close the settings window or **Cancel** to discard your changes and close the settings window.

Using Epson Projector Control

There are two modes for the main screen, Advanced Mode and Simple Mode. Choose Simple Mode to minimize the number of button options.



Advanced Mode



Simple Mode

See the tables below for a list of button functions.

Advanced Button Functions

Button	Function
Power	Turns the projector's power on/off.
Computer1	Switches to the Computer1 input source.
Computer2	Switches to the Computer2 input source.
EasyMP	Switches to the EasyMP network input source.
Video	Switches to the Video input source.
S-Video	Switches to the S-Video input source.
A/V Mute	Turns A/V Mute on/off on the projector.

Advanced Button Functions (continued)

Button	Function
Freeze	Turns the Freeze function on/off on the projector.
CC	Displays the selection menu for Closed Caption. Select one of the following: "OFF," "CC1," or "CC2." This function may not be available depending on the projector model.
Volume –	Turns the volume down on the projector.
Volume +	Turns the volume up on the projector.
▶	Switches between Advanced Mode and Simple Mode.

Simple Mode Button Functions

Button	Function
Power	Turns the projector's power on/off.
Computer	Switches between the Computer, Computer1, Computer2, and EasyMP network input sources.
Video	Switches between the Video and S-Video input sources.
A/V Mute	Turns A/V Mute on/off on the projector.
Freeze	Turns the Freeze function on/off on the projector.
Volume –	Turns the volume down on the projector.
Volume +	Turns the volume up on the projector.
▶	Switches between Advanced Mode and Simple Mode.

Solving Connection Problems

If you can't connect to the projector, check the following:

- Make sure that the network cable is correctly connected to your computer and projector.
- Check the network settings on the projector.
- Make sure that you entered the correct IP address for the projector you're trying to connect to. See your projector's documentation for information on obtaining the projector's IP address.
- Make sure that you entered the correct Monitor Password or Web Control Password for the projector that you're connecting to. If you didn't set a password, don't enter anything.

Epson is a registered trademark of Seiko Epson Corporation.

General Notice: Other product names used herein are for identification purposes only and may be trademarks of their respective owners. Epson disclaims any and all rights in those marks.

© 2007 Epson America, Inc.