

EPSON PRODUCT SUPPORT BULLETIN

Date:	04/20/2009	Originator:	JAM
PSB #:	PSB.2009.06.001	Authorization:	<i>Kas</i>
Reference:	TI 09-05e Rev. A/B	Total Pages:	5
Product(s):	PowerLite 735c / Cinema 500 / 737c / 745c / 755c / 765c / 830p / 835p / 1705c / 1715c / 6100i / 6110i / 7800p / 7850p / 7900NL / 8300i / 8300i with EasyMP.net module / 9300NL / 1815p / 1825 / 822p / 83c / 822+ / 83+ / G5000 / Pro G5150 / Pro G5350 / Pro G5200W / 1725 / 1735W / 400W / 410W / 84 / 85 / 825 / 826W PowerLite 61p / 81p / 82c / 821p / 1810 / 260d (Latin America) / 280d (Latin America) with TCP/IP to Serial converter		
Subject:	Release of EMP Monitor for Windows version 4.30		

This bulletin was created to inform you of the release of the new version 4.30 of the Epson EMP Monitor software utility.

Description of Change:

Improvements have been made to the EMP Monitor software utility.

Note: For the PowerLite 61p / 81p / 82c / 821p / 1810 / 260d (Latin America) / 280d (Latin America) models, a serial to TCP/IP conversion adapter is necessary. The function of Auto Update does not work for these models. You need to manually click on refresh to get an updated status of projectors.

Reason:

The improved points of version 4.30 are as follows:

Application	EMP Monitor
Version upgraded	Version 4.22 → Version 4.30
Improved points	(1) Addition of 7 new languages - Indonesian, Croat, Slovak, Bulgarian, Malay, Vietnamese, and Hebrew Existing 27 languages - Chinese (Traditional), Netherlands, Danish, Polish, Hungarian, Czech, Romanian, Slovene, Norwegian, Swedish, Finnish, Russian, Ukrainian, Greek, Turkish, Arabic (Windows NT4 does not support), English, Japanese, French, German, Italy, Spanish, Portuguese, Chinese (Simplified), Korean, Catalan, Thai

(2) Addition of Input Source (Only PowerLite 84 / 85 / 825 / 826W)
Previous version of EMP Monitor included USB Display, USB and LAN as one source: EasyMP.

The input source buttons for USB display, USB, and LAN are available as separate input sources as shown below:

- Old version - EMP Monitor V4.22

EMP Monitor V4.22



- New version - EMP Monitor V4.30

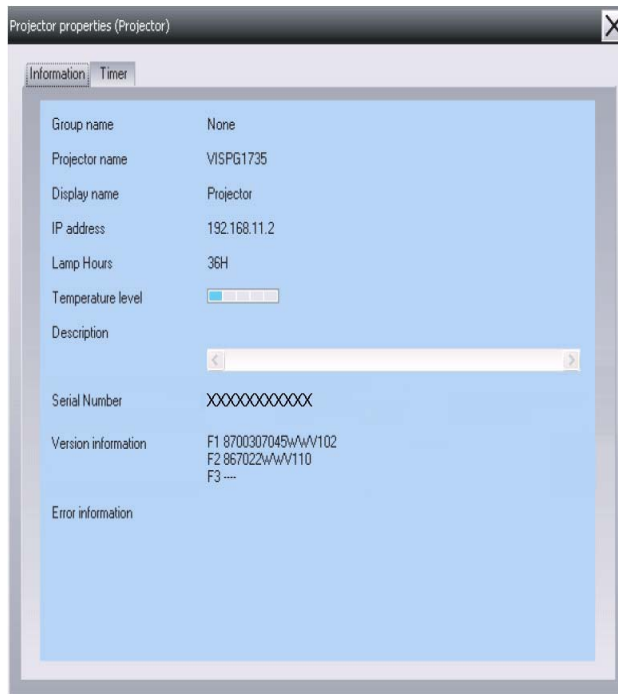
EMP Monitor V4.30



(3) New feature for the PowerLite 84 / 85 / 825 / 826W.

Displays projector's serial number in the Menu settings

- The projector's serial number is now displayed in the projector's menu under "info",
- EMP Monitor can also display the projector's serial number as shown below:



Limitations	When the PowerLite1725 / 1735W exhibit a Lamp Cover Open error state, EMP Monitor cannot detect the error. The reason is that when the lamp cover is opened, the primary power source that reports the error state to EMP Monitor is turned off immediately. This is different from other models which make the secondary power source turn off under the same condition.
--------------------	---

Note: EMP Monitor Ver. 4.xx is not compatible with EMP Monitor Ver. 3.05 and earlier versions. EMP Monitor Ver. 4.xx cannot read the setting files of EMP Monitor Ver. 3.05 and earlier versions.

System Requirements:

OS	<ul style="list-style-type: none"> Windows 98 SE / Me / NT 4.0 (SP6) *Except Arabic and Hebrew / Windows 2000 Pro / XP Home Edition / XP Professional (32 bit) / Vista Home Basic / Home Premium / Ultimate / Business / Enterprise (32 bit) *Except Ukrainian / Vista SP1 Home Basic / Home Premium / Ultimate / Business / Enterprise (32 bit) Internet Explorer Ver. 5.0 or later must be installed
CPU	Minimum: Pentium MMX 166 MHz (Recommended: Pentium II 233 MHz or higher)
Memory	At least 64 MB (Recommended: 128 MB or above)

Available hard disk space	At least 50 MB
Display	SVGA (800x600) or higher resolution, 32 bit or higher display color

Obtaining the Update:

Download epson13055.exe from www.epson.com to get the version 4.30 update for EMP Monitor. The files are extracted and copied to C:\EPSON\epson13055_emp_monitor_430.

This file is a self-extracting archive and will start the installation utility for EMP Monitor. Follow the on-screen instructions during the installation process.

Software Upgrade History:

Version	Release date	Remarks
3.00	December 25, 2002	Supported PowerLite 735c
3.01	February 26, 2003	Supported PowerLite 7800p / 8300i
3.02	April 18, 2003	Supported PowerLite 7850p / 8300i with EasyMP.net option module
3.03	November 21, 2003	Supported PowerLite Cinema 500
3.04	April 1, 2004	Supported Serial -TCP/IP conversion adapter for PowerLite 61p / 81p
4.01	October 18, 2004	Supported projectors that are configured on a large-scale network.
4.02	August 29, 2005	Addition of timer function and auto search function by specifying IP addresses. Improvement of communication logs size.
4.10	May 8, 2006	Addition of new functions, Improvement of usability, and Corresponding to PowerLite 6100i.
4.20	May 15, 2007	EMP NS Connection V2.20 supports Windows Vista (Home Basic / Home Premium / Ultimate / Business / Enterprise).
4.21	September 26, 2007	Supported 25 languages
4.22	March 31, 2008	Supported 27 languages Addition of new Error Information Supported Video (BNC)
4.30	April 3, 2009	Supported 34 languages Additional Input Sources Displays projector's serial number in Menu settings




EPSON PRODUCT SUPPORT BULLETIN

Date: 11/13/2007
PSB #: PSB.2007.11.005A
Reference: TI 07-63e, Rev. A
Product(s): Epson EMP Monitor
Subject: EMP Monitor Version 4.21 Release

Originator: AP
Authorization: *Kps*
Total Pages: 3

This bulletin was created to inform you of the release of Epson EMP Monitor version 4.21 utility.

New Functions and Improvements:

New Functions, Improvements	Supported Models	Function / Improvement Description
Support for 25 languages	All projectors (see Supported Projectors table)	Language support extended to include Chinese (traditional), Dutch, Danish, Polish, Hungarian, Czech, Romanian, Slovene, Norwegian, Swedish, Finnish, Russian, Ukrainian, Greek, Turkish, Arabic. Languages supported in prior version of EMP Monitor: English, Japanese, French, German, Italian, Spanish, Portuguese, Chinese (simplified), Korean
Abnormally low air flow notification 	PowerLite 6100i / 6110i	Indicates an abnormal decrease in the force of air flow through the air filter. User should check for air filter obstructions, clean and replace air filter as necessary. This feature is available only for the indicated models.
Air flow sensor error 	PowerLite 6100i (with firmware version 1.10 or later) / 6110i	Indicates air flow sensor error. This feature is available only for the indicated models
Clean air filter notification 	PowerLite 6110i	User notification to clean air filter. This feature is available only for the indicated model.

Supported Projectors:

This application supports the following Epson projectors:

PowerLite 735c	PowerLite 1715c	PowerLite 1815p
PowerLite 737c	PowerLite 6100i	PowerLite 822p
PowerLite 745c	PowerLite 7800p	PowerLite 6110i
PowerLite 755c	PowerLite 7850p	PowerLite Cinema 500
PowerLite 765c	PowerLite 7900NL	PowerLite 61p
PowerLite 830p	PowerLite 8300i / 8300NL	PowerLite 81p
PowerLite 835p	PowerLite 8300i with the EasyMP.net Option Module installed	PowerLite 82c
PowerLite 1705c	PowerLite 9300NL	PowerLite 821p

Supported Operating Environment:

Operating System requirement	<ul style="list-style-type: none"> Windows 98SE / Me / NT 4.0 SP6 (except Ukrainian) / 2000 Professional / XP Home Edition / XP Professional (32 bit) / Vista Home Basic / Vista Home Premium / Vista Ultimate (32 bit) / Vista Business (32 bit) / Vista Enterprise (32 bit) (except Arabic) Internet Explorer 5.0 or later
Minimum CPU requirement	Pentium MMX 166 MHz (Recommended: Pentium II 233 MHz or faster)
Minimum RAM requirement	At least 64 MB (Recommended: 128 MB or more)
Drive space requirement	At least 50 MB free
Display requirements	SVGA (800 x 600) or higher resolution, 32 bit color display or higher

Obtaining the Update:

Download epson12456.exe from www.epson.com to get the version 4.21 update for EMP Monitor. This file is a self-extracting archive and will start the installation utility for EMP Monitor.

Software History:

Version	Release Date	Notes
3.00	December 25, 2002	Added support for the PowerLite 735c
3.01	February 26, 2003	Added support for the PowerLite 7800p / 8300i
3.02	April 18, 2003	Added support for the PowerLite 7850p / PowerLite 8300i with the EasyMP.net option module installed
3.03	November 21, 2003	Added support for the PowerLite Cinema 500
3.04	April 1, 2004	Added support for the Serial ↔ TCP/IP conversion adapter for the PowerLite 61p / 81p
4.01	October 18, 2004	Added support for projectors installed on large scale networks
4.02	August 29, 2005	Addition of timer function, auto search by specifying IP address. Improvement of communication logs sizes
4.10	May 8, 2006	Addition of support for PowerLite 6100i with support for additional monitoring features unique to the PowerLite 6100i
4.20	May 29, 2007	Added support for Windows Vista (32 bit)
4.21	September 26, 2007	Increased language support to 25 languages

EPSON PRODUCT SUPPORT BULLETIN

Date:	10/18/2004	Originator:	TC
PSB #:	PSB.2004.10.005	Authorization:	Kps
Reference:	N/A	Total Pages:	3
Product(s):	PowerLite 7800p / 7800NL / 7850p / 7850NL		
Subject:	Proper Selection Of RGB Video		

This bulletin was created to inform you of an issue that can occur when a PC is connected to a PowerLite 7800p / 7850p 15 pin VGA "Computer" port with the input mode set to "RGB-Video." The image is displayed, but all 4 sides are clipped. No amount of adjustments on the PC or the projector settings can fix the screen.

Reason:

The PowerLite 7800p/7850p has 2 video input signal modes for the 15 pin VGA "Computer" connector. The two signal modes are "**Analog-RGB**" and "**RGB-Video**." To connect a PC to the 15 pin VGA connector, be sure that you have selected "Analog-RGB" as the signal mode. Refer to page 72 of the PL-7800p User's Guide or page 133 of the PL-7850p User's Guide for more information on customizing projector features.

If you have selected "RGB-Video" you will see clipping on all four sides of the displayed image.

There are 2 ways to change the input signal mode. The easiest method is to repeatedly press the "Comp" button on the remote control until "Computer (Analog-RGB)" is displayed in the upper right corner. To toggle the input signal mode you must press the button while the source message is still displayed in the upper right corner. This will correct the clipping issue.

Notes:

1. If you do not see a message in the upper right corner go to the projector's menu, and navigate to the "Setting" menu and set "Message" to "On."
2. Do not use the projector's control panel with this method.

The second method is to use the projector's menus. Bring up the projector's menu by pressing the "Menu" button on the projector's control panel, or on the remote control. Then using the arrow buttons, navigate to the "Setting" menu, press enter, and arrow down to "Computer Input" and press enter. Select "Analog-RGB" and press enter. When you exit the menu system, the displayed image will appear without any clipping.

The BNC Input connector also has 4 input signal modes including the two signal modes of "Analog-RGB" and "RGB-Video." To connect a PC to the BNC connector, be sure that you have selected "Analog-RGB" just like the 15 pin VGA "Computer" connector. You can use the same methods described above for changing the BNC Input signal modes, just substitute "BNC" for "Computer."

Note: Connection of a PC to the BNC Input is seldom used, as it requires a special cable.

Normal display of a PC connected to the 15 pin VGA connector with "**Analog-RGB**" as the signal mode.



Display of a PC connected to the 15 pin VGA connector with **“RGB-Video”** selected as the signal mode. **Notice the clipping on all four sides of the displayed image.**



EPSON PRODUCT SUPPORT BULLETIN

Date:	10/08/2004	Originator:	DS
PSB #:	PSB.2004.10.002	Authorization:	Kps
Reference:	TI 04-46e Rev. A	Total Pages:	14
Product(s):	EMP NS Connection, EMP Network Manager, EMP Monitor, EMP Multi Screen Adjustment, Cinema Color Editor, VCOM Driver		
Subject:	Evaluation results of Epson Projector PC applications tested in Windows XP with SP2.		

The purpose of this bulletin is to provide information on Epson PC projector applications tested under the Windows XP SP2 (Service Pack2) environment.

Description:

Information is provided about the evaluation results and recommendations for Epson PC projector applications functionality in Windows XP SP2 Firewall environment.

Reason:

Compatibility testing for functionality of EMP NS Connection, EMP Network Manager, EMP Monitor, EMP Multi Screen Adjustment, Cinema Color Editor, VCOM Driver in the Windows XP SP2 environment.

Results of Windows XP SP2 installation:

Installing SP2 on PCs did not disturb the installation of the above software applications. Also, the application software can be installed on PCs where SP2 or earlier versions are installed without any issues.

The information contained in the following pages provides details for executing the applications in Windows XP SP2.

Executing the Software:

When executing the software noted below for the first time after SP2 installation completes, the following security alert messages are displayed:

[EMP NS Connection]



Security alert screen (EMP NS Connection)

[EMP Network Manager]



Security alert screen (EMP Network Manager)

[EMP Monitor]



Security alert screen (EMP Monitor)

[EMP Multi Screen Adjustment]



Security alert screen (EMP Multi Screen Adjustment)

The Security Alert screen for **EMP Multi Screen Adjustment** is shown after clicking the **Auto** button of **Network** or clicking the **Add** button after entering an IP address in the **IP Address** box.

[Cinema Color Editor]



Security alert screen (Cinema Color Editor)

The functions of the three buttons displayed in the security alert screen are explained below.

- [Keep Blocking]** --- Enables you to register a started application in the “**Exceptions**” program of the Windows Firewall. The network port that the application uses is blocked. By selecting this button once, this security alert message will not be shown when starting the application next time.
- [Unblock]** ----- Enables you to register a started application in the “**Exceptions**” program of the Windows Firewall and unblock the network port that the application uses. By selecting this option once, this security alert message will not be shown when starting the application next time.
- [Ask me later]**----- When you want to select both buttons above or select either one later, this button is selected. The started application is not registered in the “**Exceptions**” program of the Windows Firewall and the network that the application uses is not unblocked. However, when restarting the application, the same security alert message is shown.

- **PC applications will work normally on Windows XP with SP2 if the “Unblock Item” is selected when the security alert screen is shown.**

For the detail operation information of each application, please refer to the following:

Operating Status Report

When selecting the **Keep Blocking** button, the security alert message is closed and the main screen of each application is displayed.

[EMP NS Connection Application]

Port **3620** is necessary for searching for projectors. If this port is blocked, projectors are not detected.

The other applications operate normally. However, there is a case that execution of automatic search disables automatic detection. This occurs when projectors are registered for automatic detection in EMP Monitor before installing SP2, then the registered projectors may not be detected again after SP2 installation. Therefore it is recommended to select **Unblock** in the security alert screen.

If “**Keep Blocking**” has been selected when starting the application for the first time, and the blocking needs to be removed, complete the execution of the application and proceed with unblocking as follows:

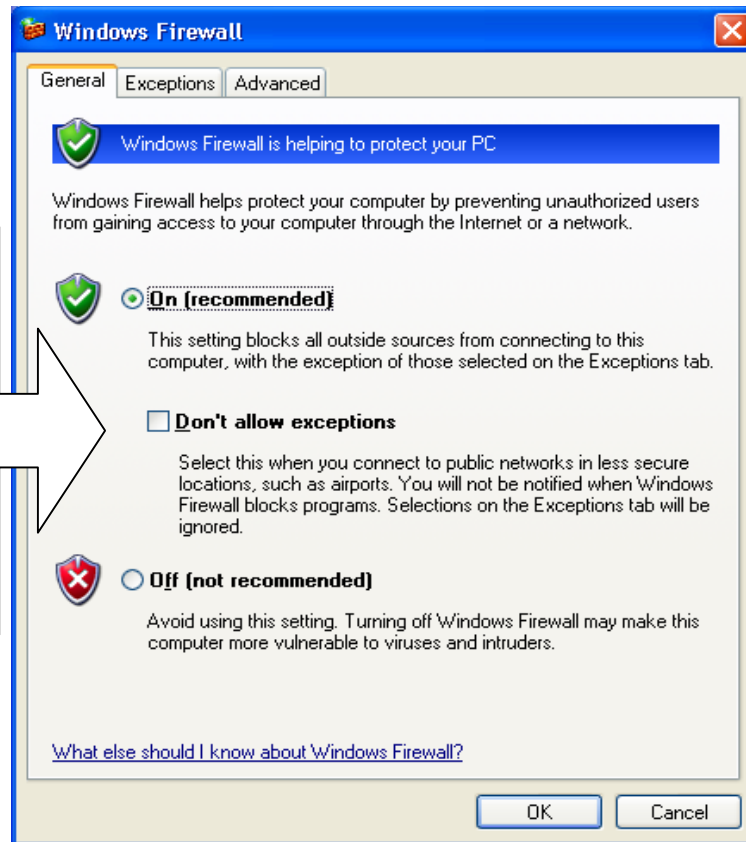
- a.) Start the Windows Security Center. Double click the icon in the shape of a shield that is always displayed on the taskbar after the installation of SP2.



Windows Security Center screen

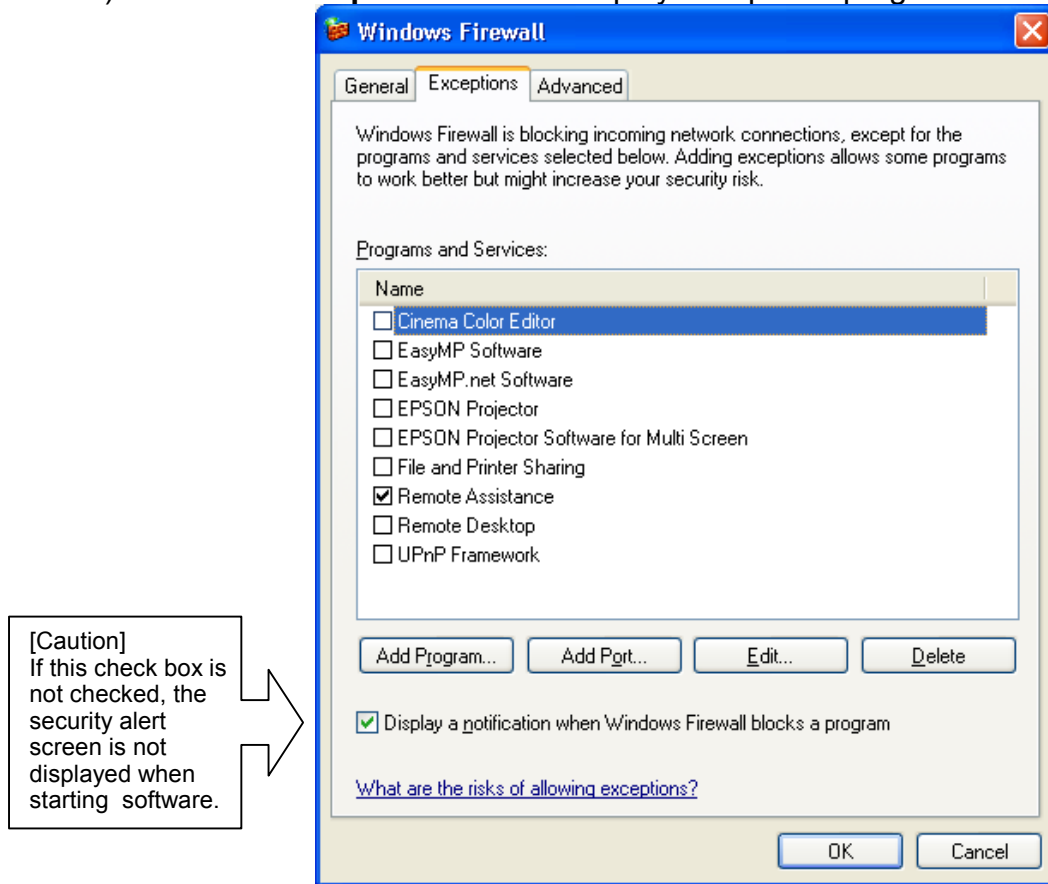
- b.) Select and start **Windows Firewall**

[Caution]
In case the check box for **Don't allow exceptions** is checked (this box is not checked at the initial setting), a network port for software is not unblocked even though the software is checked on **Exceptions**. Make sure this option is not selected.



Windows Firewall screen

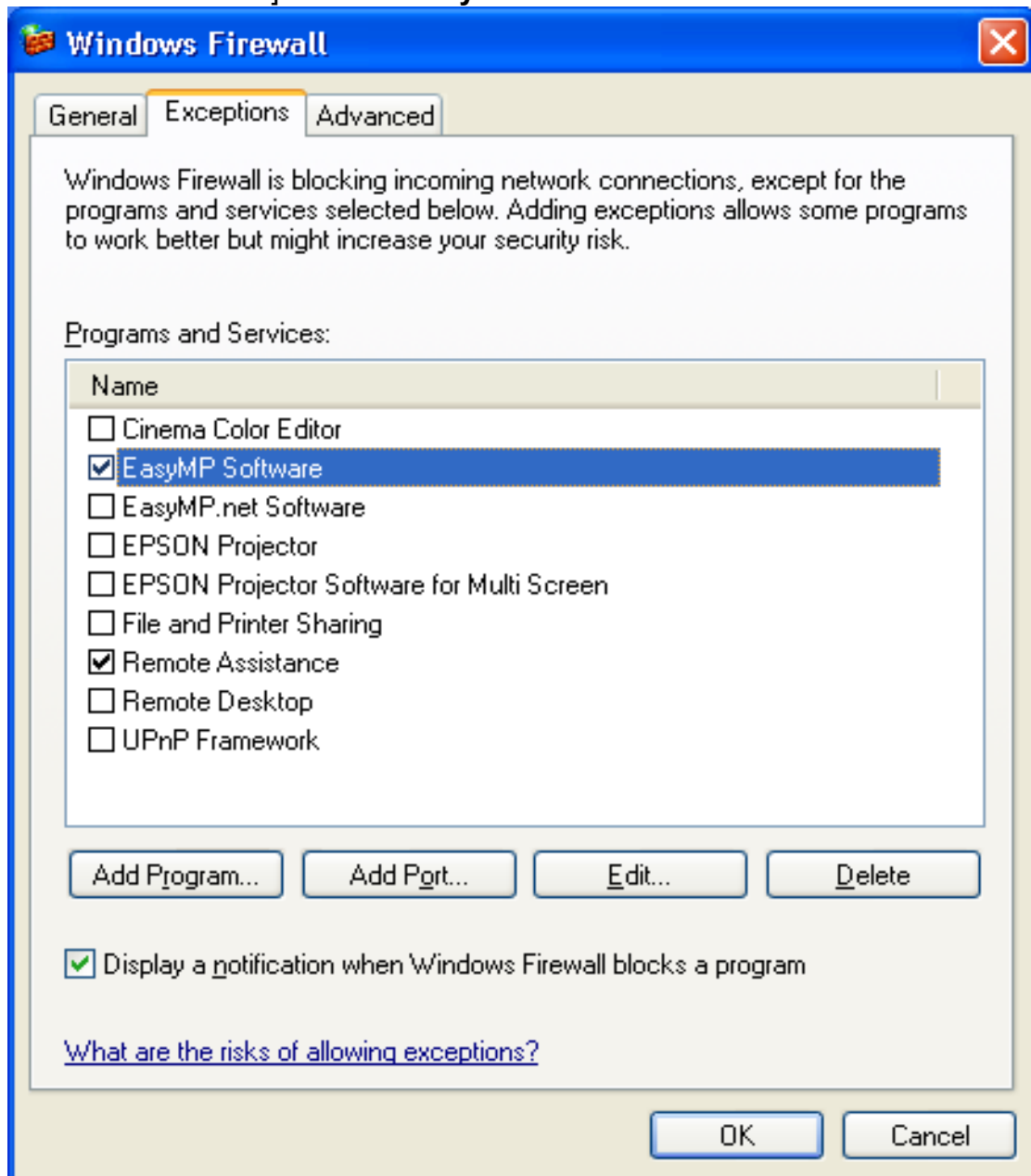
c.) Select the **Exceptions** tab and display exceptions program.



•Exceptions screen

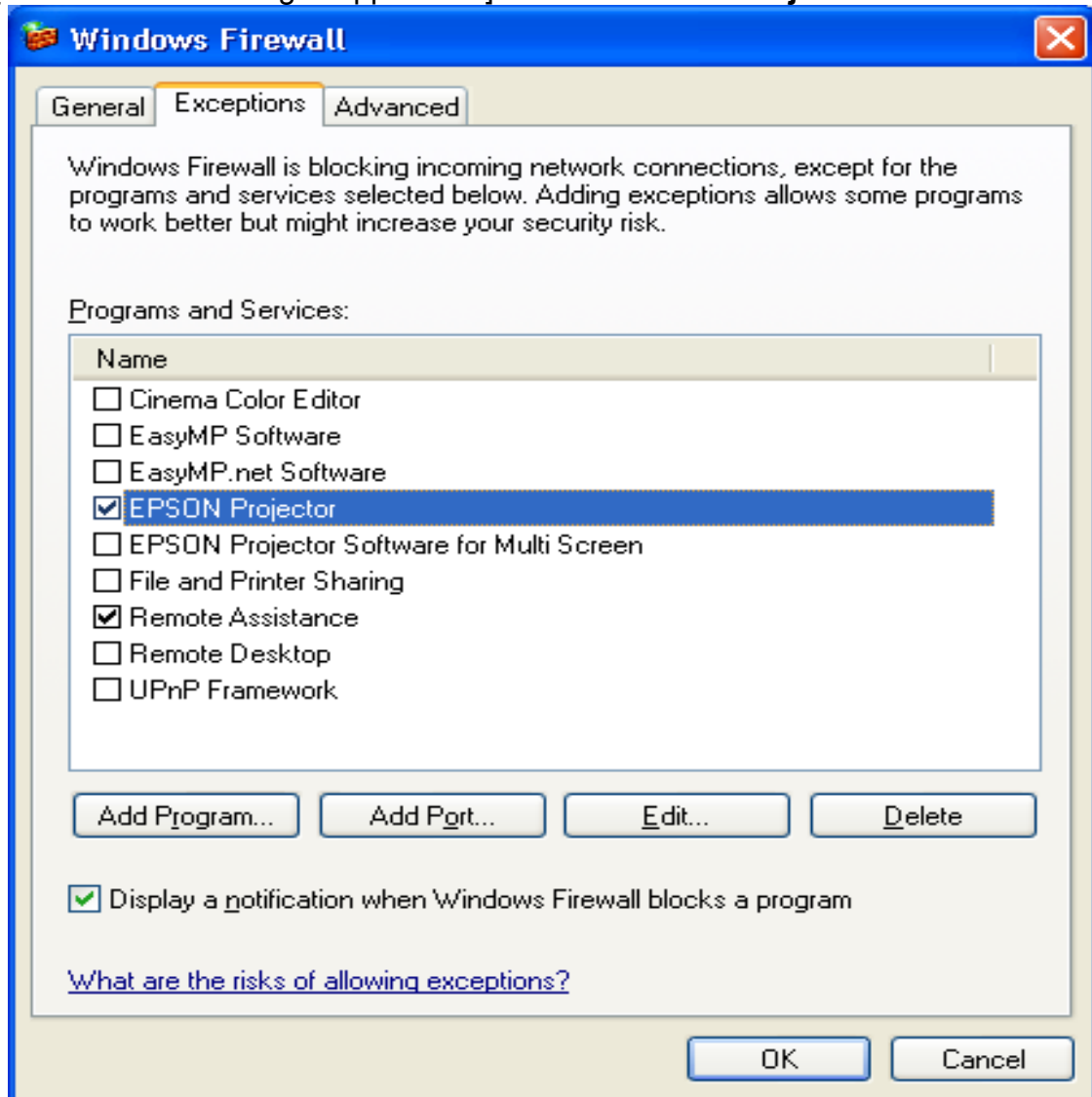
d.) Check the check boxes for the software you don't want to block.

[EMP NS Connection] • Check **EasyMP Software** box



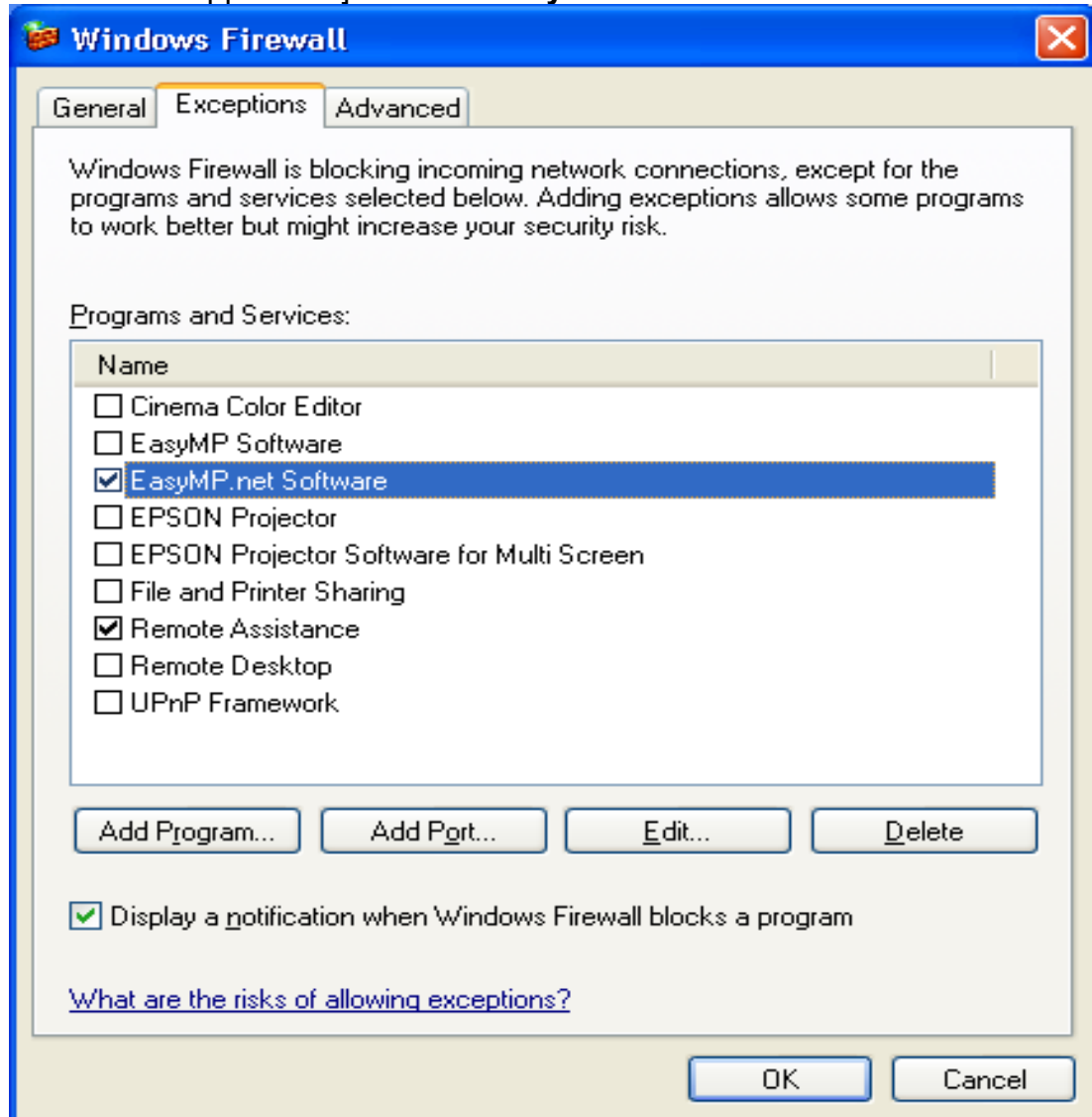
Unblock screen (EMP NS Connection)

[EMP Network Manager Application] • Check **EPSON Projector** box



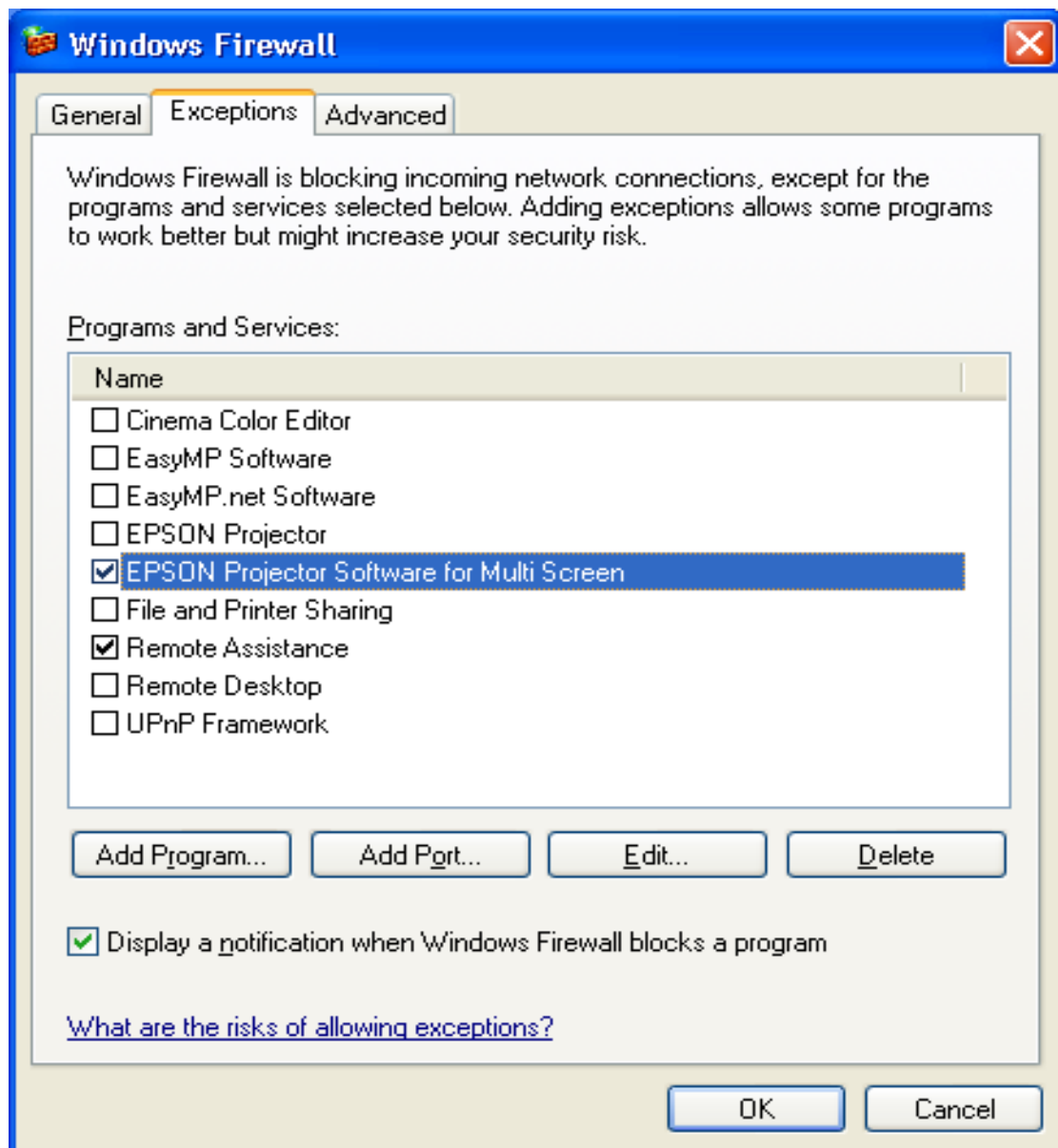
Unblock screen (EMP Network Manager)

[EMP Monitor Application]→ Check **EasyMP.net Software** box



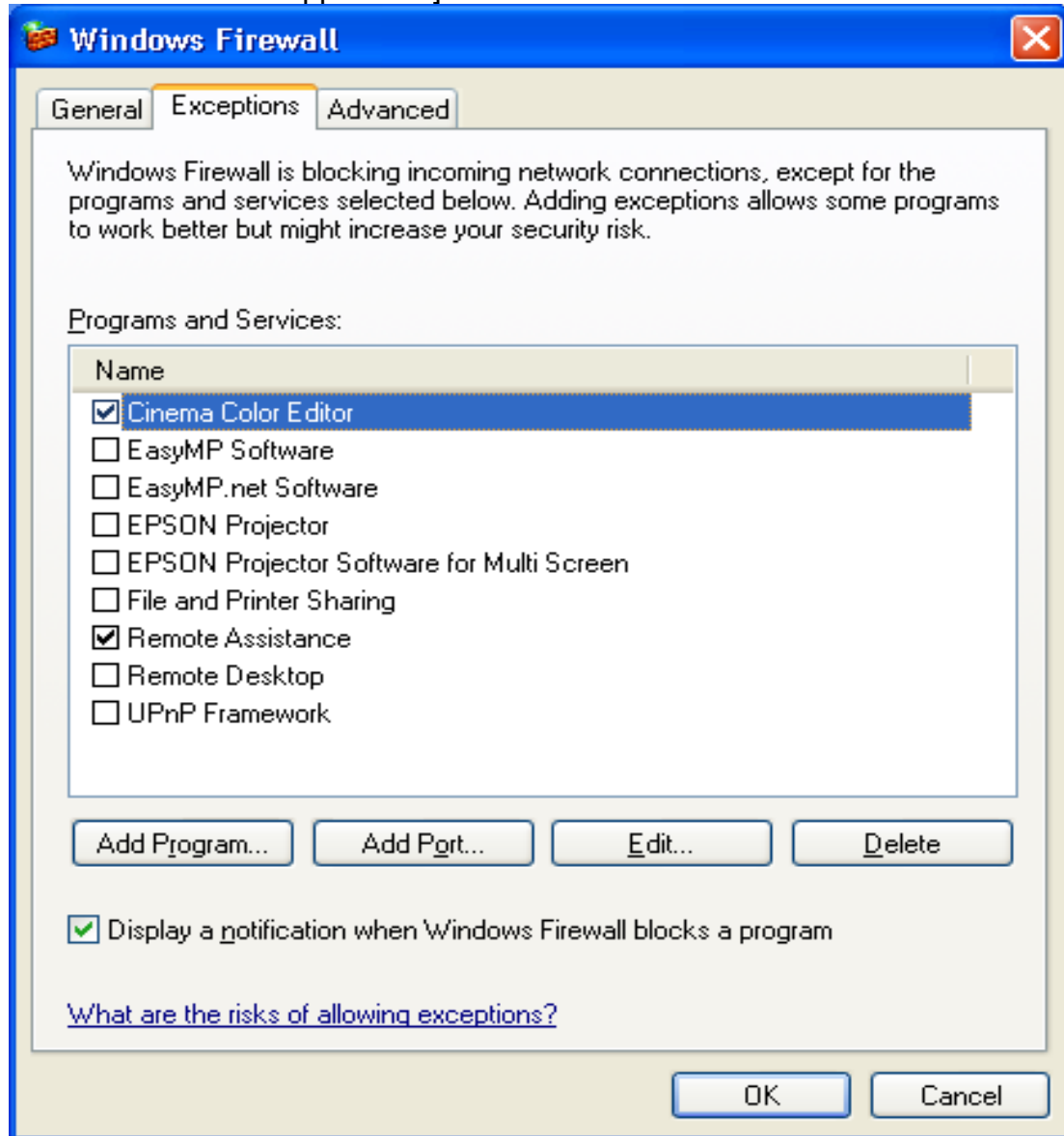
Unblock screen (EMP Monitor)

[EMP Multi Screen Adjustment Application]→ Check **EPSON Projector Software for Multi Screen** box



Unblock screen (EMP Multi Screen Adjustment)

[Cinema Color Editor Application] ---> Check **Cinema Color Editor**.



Unblock screen (Cinema Color Editor)

By following the above procedure, the network port that each application uses is unblocked and they can operate normally.

Corresponding program name to PC applications

PC Application	Program name
EMP NS Connection	EasyMP Software
EMP Network Manager	EPSON Projector
EMP Monitor	EasyMP.net Software
EMP Multi Screen Adjustment	EPSON Projector Software for Multi Screen
Cinema Color Editor	Cinema Color Editor

When selecting the **Unblock** button:

The Security Alert screen is closed and the main screen is displayed. Then the search result is displayed.

When selecting the **Ask Me Later** button:

Port **3620** which is used by EMP NS Connection and is necessary for discovering projectors is blocked, and projectors are not detected.

The other applications operate normally. However, there is a case where execution of automatic search disables automatic detection. This occurs when projectors are registered for automatic detection in EMP Monitor before installing SP2, the registered projectors may not be detected after SP2 installation.

VCOM Driver

The following message is shown after the VCOM driver is installed on your PC. Select “No, not this time” item and continue the Plug&Play of the device.



8.) Notes:

When you add the program to Exceptions list, the program can receive network communication from outside. This may cause a security risk such as exposure to a virus attack.

EPSON PRODUCT SUPPORT BULLETIN

Date:	02/26/2004	Originator:	AP
PSB #:	PSB.2004.02.009	Authorization:	AP
Reference:	TI03-57e Rev. A	Total Pages:	1
Product(s):	PowerLite 735c / 7800p / 7850p / 8300i / Cinema 500		
Subject:	EMP Monitor version 3.03 Update		

This bulletin was created to inform you of the availability of EMP Monitor version 3.03. This version of the EMP Monitor software has added support for the PowerLite Cinema 500 projector. All other support for previously supported projectors remains the same.

This software update can be downloaded from the Epson website. Locate and download epson11017.exe. This file is a self extracting archive that will automatically start the program installer once the file is extracted to your computer hard drive.

Refer to the documentation provided with your projector for further information about the operation of the EMP Monitor software.