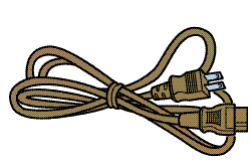


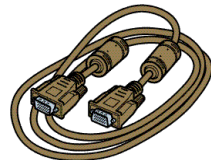
START HERE

Locate everything you'll need

For most setups, you'll need just these two cables:



power cord

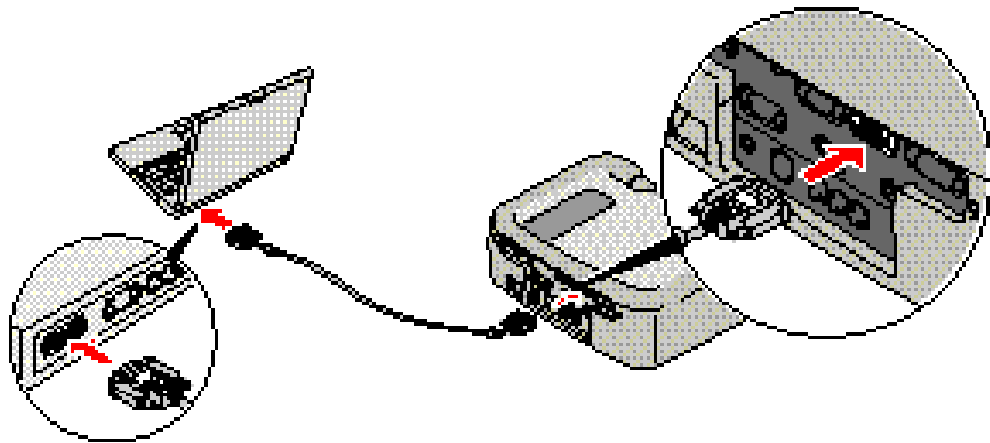



computer cable

You won't need to install any software.

Connect the projector to your laptop

- 1 Make sure your projector and laptop are turned off.
- 2 Connect one end of the computer cable to the **Computer 2/Component Video** port on the projector.



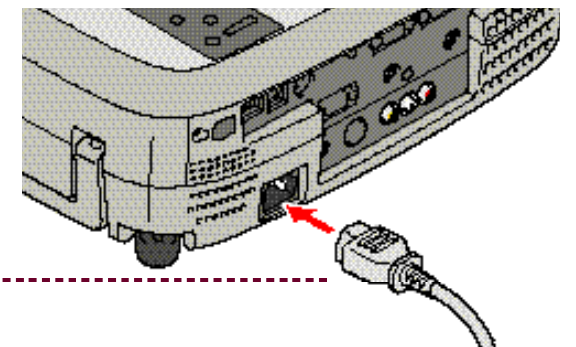
- 3 Connect the other end to your laptop's video or  monitor port.




Follow these instructions to connect the projector to your laptop. To connect other devices, such as a VCR or desktop PC, see your *User's Guide*.

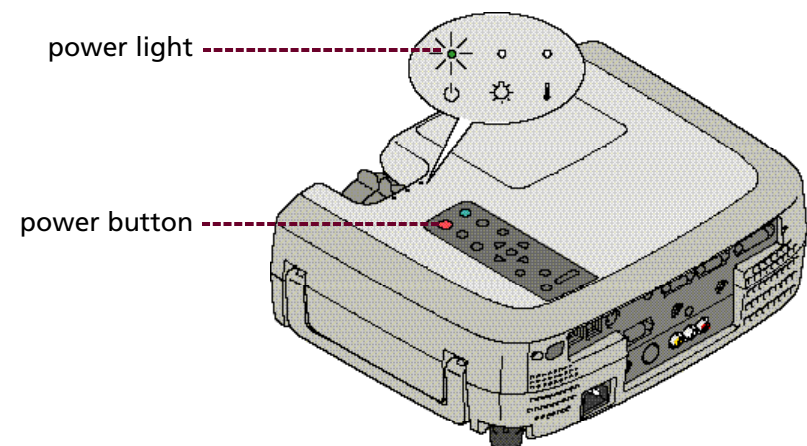
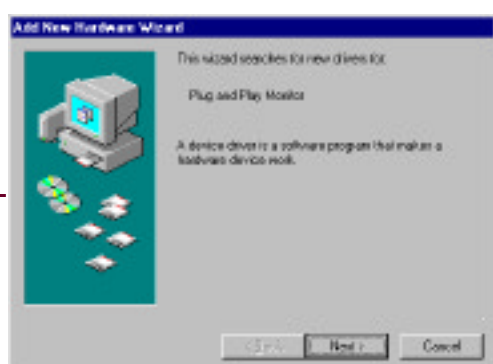
Plug in your projector

Connect the power cord to your projector and plug the other end into a grounded outlet.




Turn on your equipment

- 1 Turn on the projector first. To do so, press the red **Power** button. The  power light flashes green as the projector warms up, and the projection lamp comes on in about 30 seconds.
- 2 Turn on or restart your laptop. (Windows only: If you see a New Hardware Wizard screen for a Plug and Play monitor, click **Cancel**.)



Caution: Before unplugging the projector...

Press the red **Power** button twice, then let the projector cool while the  power light flashes orange (about a minute). Once the light stops flashing and stays on, it's safe to unplug the projector.

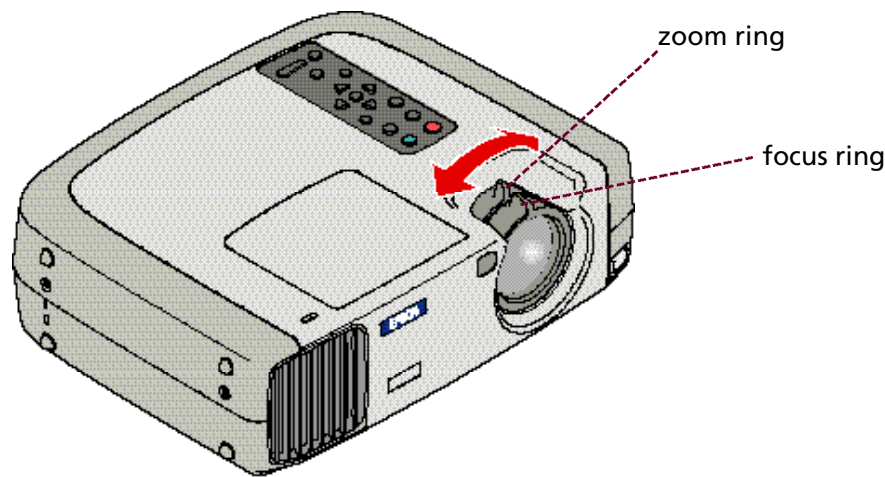
Never unplug the projector when the  power light is green or flashing orange.


Turn Over



Adjust the image

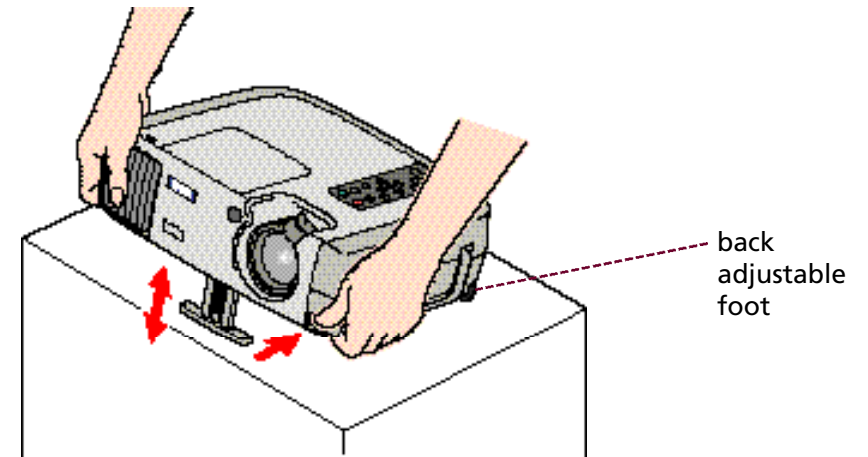
- 1 Remove the lens cap and rotate the focus ring to sharpen the image.

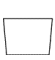




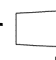
Note: If you see a blank screen  after focusing, see the box below.

- 2 Rotate the zoom ring to reduce or enlarge the image. (You can also move the projector closer to or farther from the screen.)

- 3 Raise the image as needed. To do this, press the foot release button and lift the front of the projector. Once the image is positioned where you want it, release the button to lock the foot in position. If you need to straighten the image, rotate the round adjustable foot at the back of the projector.



- 4 If your image looks like  or , press the **Sync+** or **Sync-** (vertical **Keystone**) button to correct the shape of the image.

- 5 If your image looks like  or , you've placed the projector at an angle to the screen. Move it directly in front of the center of the screen, facing the screen squarely. Or press the **Tracking+** or **Tracking-** (horizontal **Keystone**) button to correct the shape.

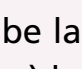
If you see a blank screen

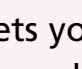
If you see a blank screen or the **No Signal** message after turning on your laptop, check the following:



- Make sure the power light is green and not flashing and the lens cover is off.
- Try turning off the laptop and restarting it.
- If you've connected more than one computer and/or video source, you may need to press the **Computer/YCbCr** or **Video** button on top of the projector. (Allow a few seconds for the projector to sync up after pressing it.)
- Make sure your cable is connected securely.

If you're using a Windows laptop:

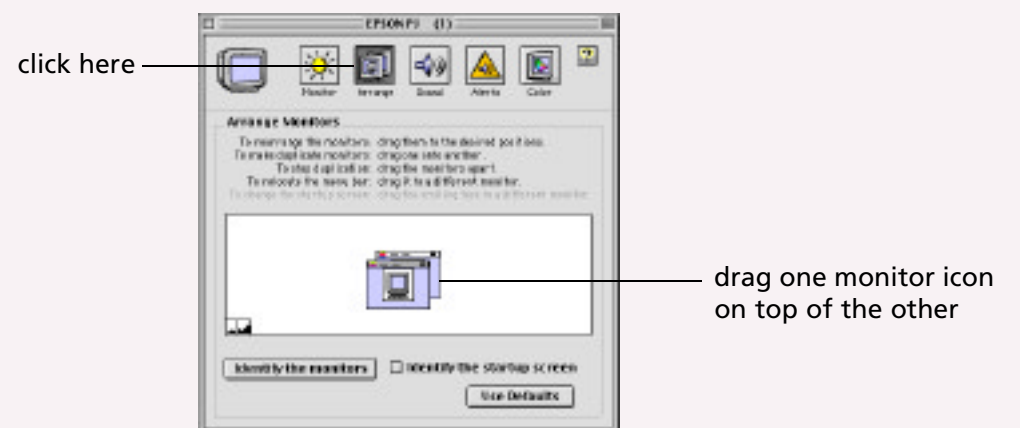
- Press the function key that lets you display on an external monitor. It may have an icon such as , or it may be labelled **CRT/LCD**. You may have to hold down the **Fn** (function) key while pressing it. (Allow a few seconds for the projector to sync up after pressing it.) Check your laptop's manual or online help for details.

On most systems, the  or **CRT/LCD** key lets you toggle between the LCD screen and the projector, or display on both at the same time.

- You might need to use the Display utility in the Control Panel to enable both the LCD screen and external monitor port.

If you're using a Macintosh:

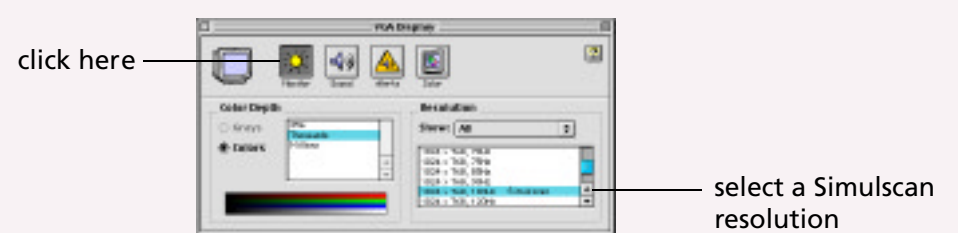
1. From the Apple menu, select **Control Panels**, then click **Monitors** or **Monitors and Sound**.
2. Click the **Arrange** icon.



3. Drag one monitor icon on top of the other. This lets you display on the projector screen as well as the LCD screen.

If this option isn't available, you may need to select one of the Simulscan resolution settings:

1. Perform step 1 above, if necessary.
2. Click the **Monitor** icon.



3. Select a **Simulscan** resolution as shown. (Allow a few seconds for the projector to sync up after making the selection.)