

Message Broadcasting

Message Broadcasting is a plug-in for EasyMP Monitor. Administrators can use the plug-in to send messages or announcements to one or more projectors or all the projectors on the network. You can send messages manually, or use the Timer function in EasyMP Monitor to have messages sent automatically.

You can use Message Broadcasting to send images in JPEG format. The maximum resolution for an image is 1920 × 1200 pixels.

Getting Started

Before you install the Message Broadcasting plug-in, make sure EasyMP Monitor (version 4.40 or later) is installed, and your projectors are registered in EasyMP Monitor. Make sure your projectors support Message Broadcasting; check www.epson.com/support if necessary.

Follow the instructions on the Epson website for downloading and installing.

You need to use a networked Windows computer running Windows® 7, Windows Vista®, Windows XP, or Windows 2000 Professional to install the plug-in.

If any of the projectors you select are switched off, they will power on automatically when you begin Message Broadcasting. For network communication, make sure the **Standby Mode** setting in the projectors' Extended menu is set to **Communication On**.

Creating Messages

The easiest way to create messages in the JPEG format is to save slides from Microsoft® PowerPoint® as .JPG files.

1. After you create a slide or series of slides in PowerPoint, open the File menu and select **Save As**.
2. For the file type, select **JPEG File Interchange Format (*.jpg)**, then click **Save**.

If you are working with a series of slides, you can select whether you want to save all slides or just the current slide.

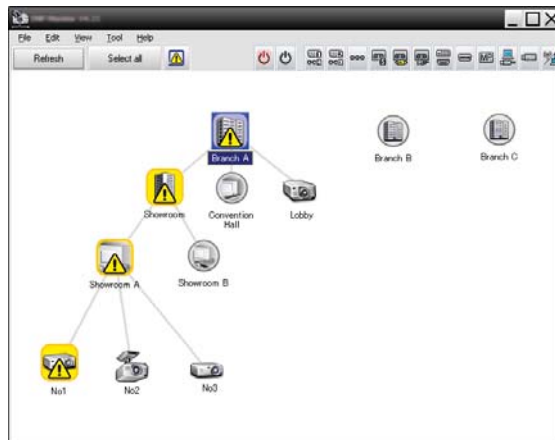
Broadcasting Manually

You can broadcast a single image or select a folder containing a series of images to broadcast as a slideshow.

1. Start EasyMP Monitor. You may see a screen like the following, showing your registered projectors and groups:

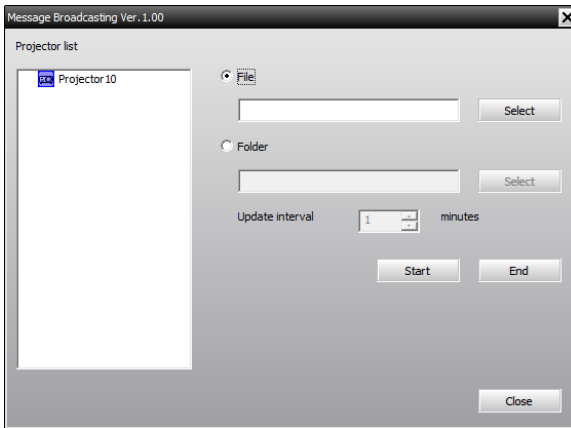
note

This screen shows an example of Group View. Your screen will look different in Detail View.

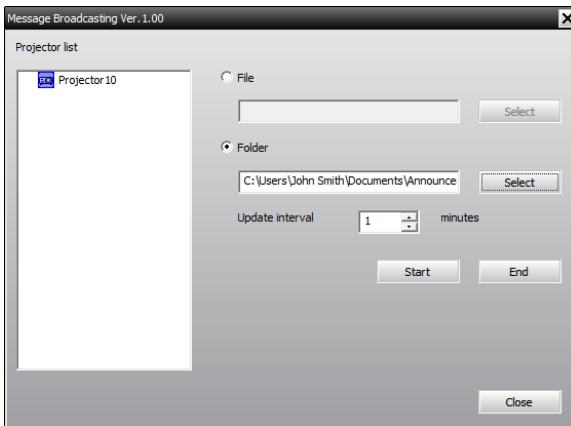


2. Open the **Tool** menu and select **Plug-in > Message Broadcasting**.

You see the Message Broadcasting window:



3. Select the projector or group you want to send your message to.
4. Click the **File** or **Folder** button, depending on whether you want to broadcast an individual message (File) or a series of slides (Folder).
5. Click **Select**, then select the file or folder you want to broadcast. You see the file or folder on the Message Broadcasting window:



6. If you have selected a folder, you can specify the timing between slides. Select the number of minutes for the **Update interval**.
7. Click **Start**. Your message or slideshow is sent to the selected projector or group. You will not see a confirmation message.

note

Projector users or presenters can end the message broadcast at any time by pressing the Esc button on the projector or remote control. The following reminder is displayed in the lower left corner of the screen: [ESC]: Close Message Broadcasting.

Once the Esc button is pressed, the projector will not receive broadcast messages until it is restarted.

If a projector is already operating, the Message Broadcast will interrupt the existing projection.

8. When you want to end the message display or slideshow, click End.

If you are broadcasting a series of slides, you may need to calculate the end time. Multiply the number of slides by the Update interval between slides, then add the number of minutes to the start time.

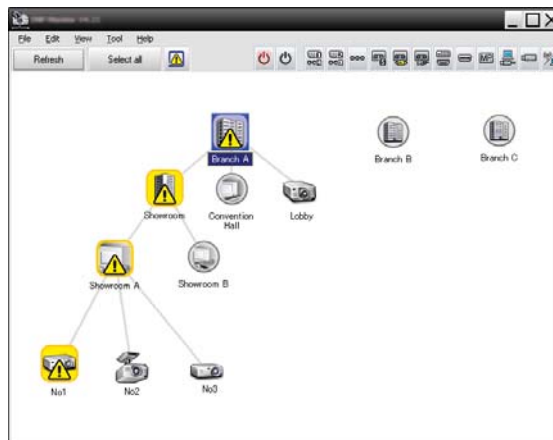
If you do not click End, the message will remain on the screen. If you are broadcasting a slideshow, it will repeat until you end it.

However, individual projector users or presenters can stop the broadcast by pressing the Esc button on the projector or remote control. Once the Esc button is pressed, the projector will not receive broadcast messages until it is restarted.

Broadcasting Automatically

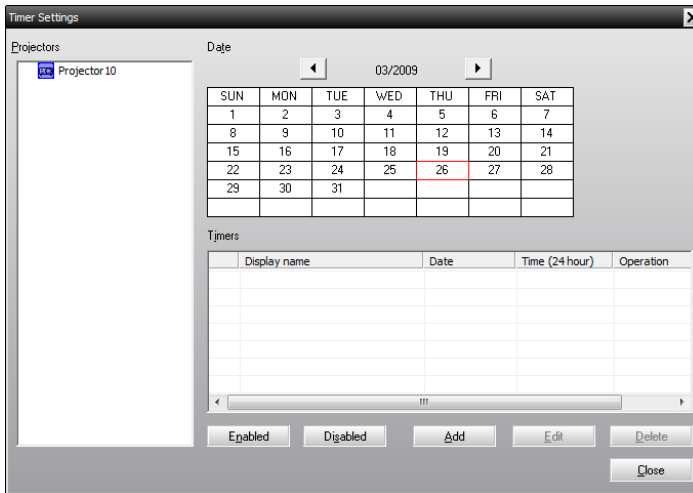
You can use the Timer function in EasyMP Monitor to set up slideshows or messages for automatic broadcasting.

1. Start EasyMP Monitor. You may see a screen like the following, showing your registered projectors and groups:

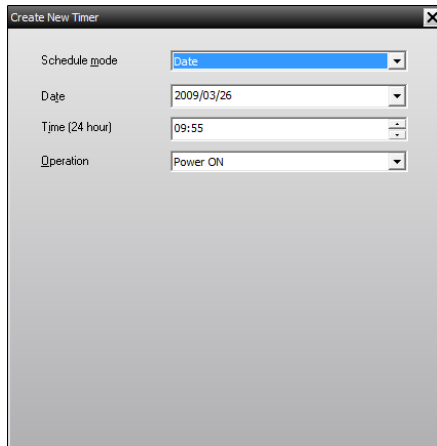


2. Open the Tool menu and select Timer > Timer Settings.

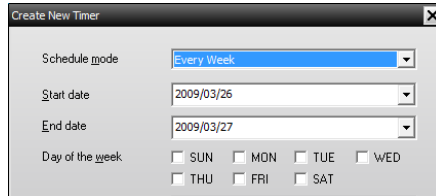
You see the Timer Settings window:



3. Select the projector or group you want to send your message to.
4. Click Add. You see the Create New Timer window:



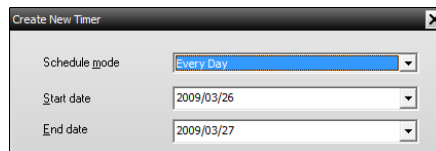
5. Click the arrow in the **Schedule mode** box and select one of the following:
 - **Date**—Select the date you want to broadcast.
 - **Every Week**—Select the start and end dates, and the day or days you want to broadcast.



The screenshot shows a dialog box titled "Create New Timer" with a close button (X) in the top right corner. It contains the following fields:

- Schedule mode:** A dropdown menu with "Every Week" selected.
- Start date:** A date picker showing "2009/03/26".
- End date:** A date picker showing "2009/03/27".
- Day of the week:** A group of checkboxes for SUN, MON, TUE, WED, THU, FRI, and SAT, all of which are currently unchecked.

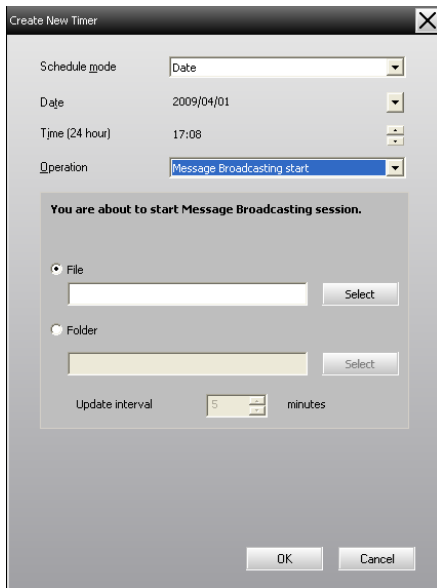
- **Every Day**—Select the start and end dates for the daily broadcast.



The screenshot shows the same "Create New Timer" dialog box, but with "Every Day" selected in the "Schedule mode" dropdown menu. The "Start date" and "End date" fields remain "2009/03/26" and "2009/03/27" respectively. The "Day of the week" checkboxes are not visible in this view.

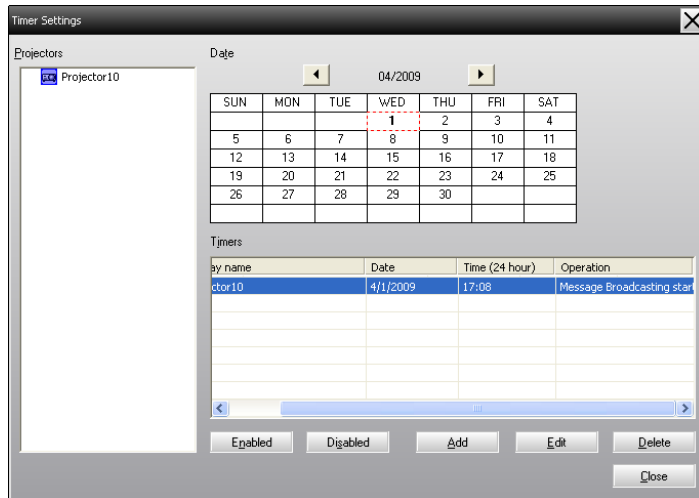
6. Select the time you want to start broadcasting.
7. Click the arrow in the **Operation** box and select **Message Broadcasting start**, then click **OK**.

You see the following:



8. Click the **File** or **Folder** button, depending on whether you want to broadcast an individual message (**File**) or a series of slides (**Folder**).
9. Click **Select**, then select the file or folder you want to broadcast.
10. If you are broadcasting a slideshow, you can specify the timing between slides. Select the number of minutes for the **Update interval**.
11. Click **OK**.

You see your schedule in the Timer Settings window:



note

Projector users or presenters can end the message broadcast at any time by pressing the Esc button on the projector or remote control. The following reminder is displayed in the lower left corner of the screen: [ESC]: Close Message Broadcasting.

Once the Esc button is pressed, the projector will not receive broadcast messages until it is restarted.

12. To set the message end time, click **Add**, select the time, then select **Message Broadcasting end** in the **Operation** box and click **OK**. You must set the end time; otherwise, your message broadcast will continue indefinitely.

You can use the buttons at the bottom of the screen to enable, disable, edit, or delete your timer settings.

13. When you are finished adjusting timer settings, click **Close** to save the settings.

Solving Problems

If messages fail to display on the selected projectors, check the following:

- If the message does not appear on any of the projectors, check the firewall settings on the computer running EasyMP Monitor. Make sure EasyMP Monitor is selected as an exception.
- If an individual projector fails to display the message, make sure the **Standby Mode** setting in the projector's Extended menu is set to **Communication On**.
- Try restarting the projector. If a projector user or presenter has pressed the **Esc** button to stop the message broadcast, the projector will not receive messages until it is restarted.