

# Quick Setup

Before using the projector, make sure you read the safety instructions in the *User's Guide* on your projector CD.

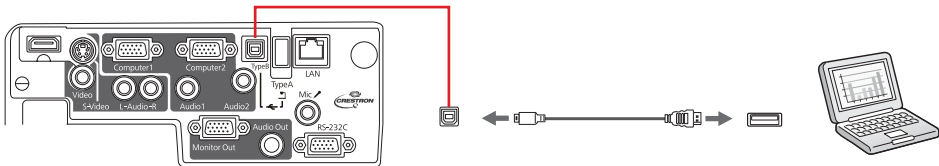
## Connect the projector

Choose from the following connections:

### Computer USB Port

Connect a computer using a USB cable.

Connect the square end of the USB cable to the projector's **USB TypeB** (square) port. Connect the flat end of the cable to any USB port on your computer.



**Windows® 2000 SP4 or later:** After turning on the projector, follow the on-screen instructions to install the Epson USB Display software (EMP\_UDSE.EXE; only on first connection).

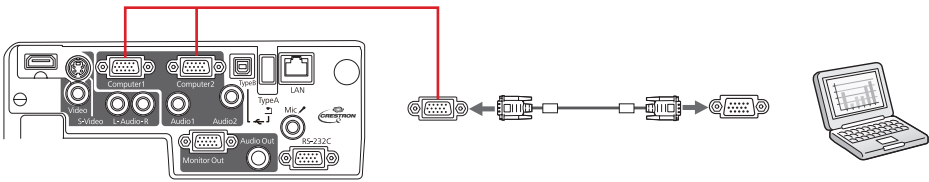
**Note:** If the software screen does not display automatically, open **My Computer** or **Computer**, then double-click **EPSON\_PJ\_UD**. If it still does not display, access the projector's **Extended** menu and select **USB Display** as the **USB Type B** setting. See the *User's Guide* on your projector CD for instructions.

**Mac OS® X 10.5.1 or higher:** After turning on the projector, the setup folder for USB Display appears in the Finder. Double-click **USB Display Installer** and follow the on-screen instructions to install the Epson USB Display software (only on first connection).

### Computer Monitor Port

Connect a computer using the VGA cable that came with the projector.

Connect one end of the cable to the projector's **Computer1** or **Computer2** port, and the other end to your computer's monitor port. If you are using a notebook, switch it to external display (see "Troubleshooting"). You can also connect an audio cable.

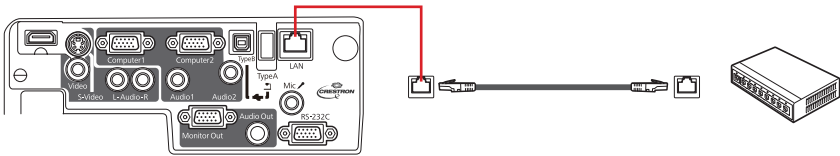


### Wireless Network

You can connect the projector wirelessly over an 802.11g, 802.11b, or 802.11n wireless network. See "Project wirelessly" for instructions.

### Wired Network

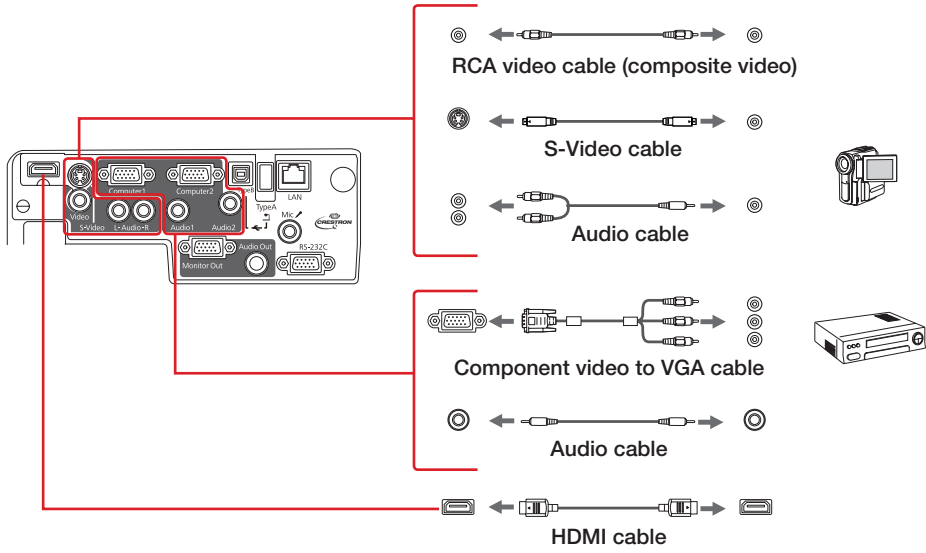
You can connect your projector to your network (for monitoring and controlling only) using an Ethernet® cable.



See "Install network software" on the back of this sheet for additional information.

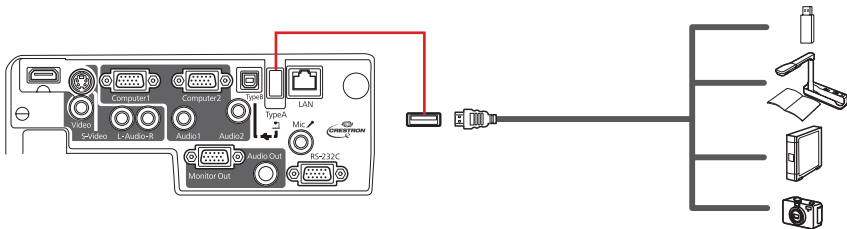
### Video Device

Connect up to 5 video devices and use the **Source Search** button on the projector or remote control to switch between them. (All cables are optional).



### Camera, USB Device, or Epson Document Camera DC-06

Connect a digital camera, USB flash drive, USB storage device, or Epson document camera DC-06 to the projector's USB **TypeA** (flat) port.



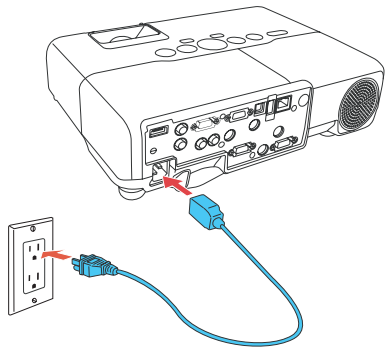
If you connect a digital camera, USB flash drive, or USB storage device, you can use the projector's **Slideshow** feature. See the *User's Guide* on your projector CD for details.

### External Monitor, External Speakers, and Microphone

You can also connect an external monitor, external speakers, and a microphone to your projector to enhance your presentations. See the *User's Guide* on your projector CD for details.

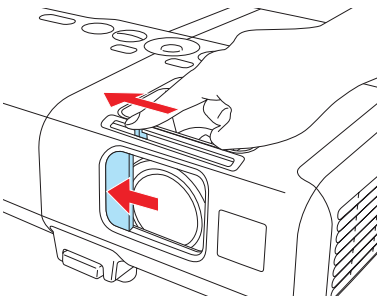
## Turn on your equipment


- 1 Turn on your computer or video source.
- 2 Plug in the projector.

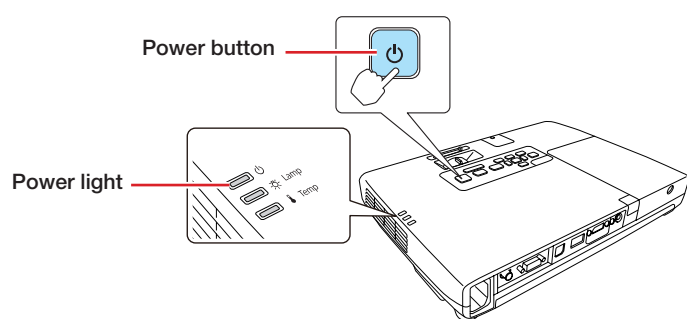


The power light on the projector turns orange.


- 3 Open the **A/V Mute** slide all the way.



- 4 Press the  power button on the projector or remote control.



The power light flashes green, then stays on.

**Note:** To shut down the projector, press the  power button twice, then unplug it. You don't have to wait for the projector to cool down.

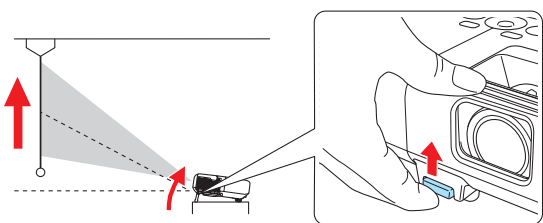
- 5 The default language of the menu system is **English**. To select another language, press the **Menu** button on the remote control. Select **Extended** and press **Enter**. Select **Language** and press **Enter**. Select your language and press **Enter**. Press the **Menu** to exit the menu system.

## Adjust the image

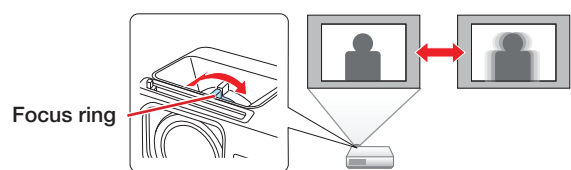
- 1 If you don't see an image, press the **Source Search** button on the projector or the remote control to select the image source.

**Note:** If you still see a blank screen or have other display problems, see the troubleshooting tips on the back of this sheet.

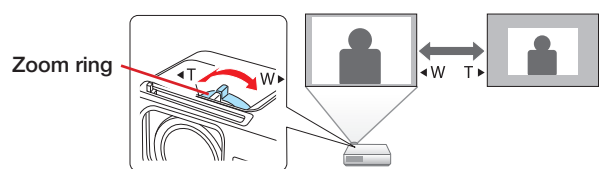
- 2 To raise the image, press the foot release button and lift the front of the projector. Release the button to lock the foot in position.

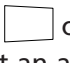









- 3 Rotate the focus ring to sharpen the image.



- 4 Turn the zoom ring to reduce or enlarge the image.

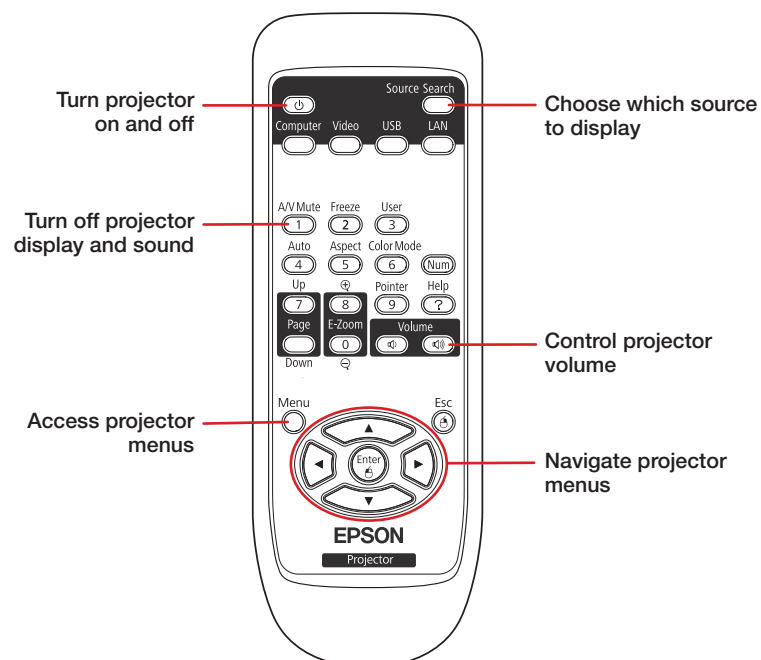
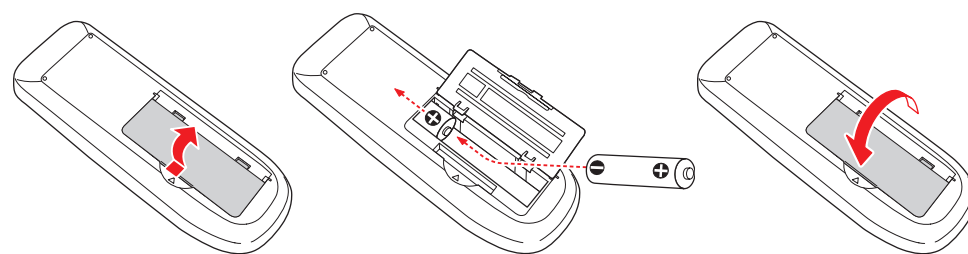


- 5 If your image looks like  or , you've placed the projector off to one side of the screen at an angle. Place it directly in front of the center of the screen, facing the screen squarely. Or press the  or  buttons on the projector to correct it.

- 6 If your image looks like  or , press the  or  buttons on the projector to correct it.

## Using the remote control

Make sure the batteries are installed as shown (two AA batteries).

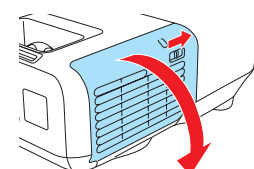


For more information on using the remote control, see the *User's Guide* on your projector CD.

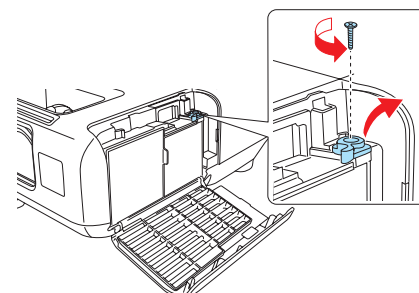
## Project wirelessly

Follow the steps here to connect the projector wirelessly over an 802.11g, 802.11b, or 802.11n wireless network. You must install the optional Epson wireless LAN module (part number V12H418P12). Your computer must have a wireless card or built-in wireless interface, and be running Windows 7, Windows Vista®, Windows XP Professional x64, Windows XP, or Windows 2000, or Mac OS X 10.3 to 10.6.

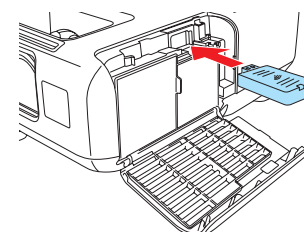
- 1 Turn off the projector and unplug the power cord.
- 2 Slide the air filter cover latch and open the air filter cover.



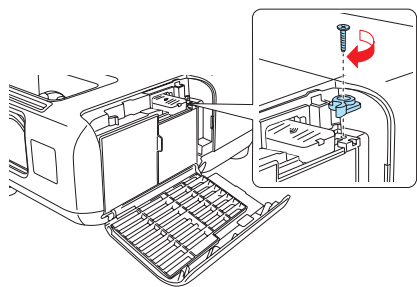
- 3 Remove the screw securing the wireless LAN module stopper, then remove the stopper.



- 4 Insert the wireless LAN module into the port.



5 Replace the wireless LAN module stopper and secure it using the screw you removed.



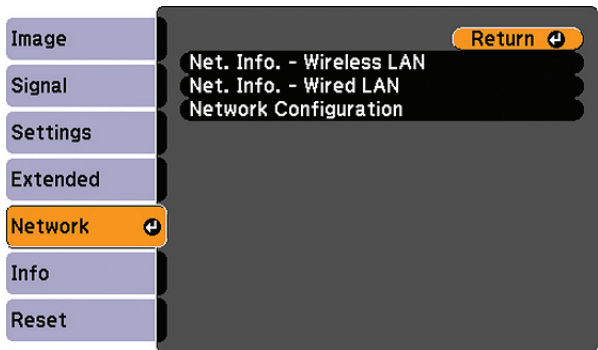
6 Close the air filter cover.

7 Plug in and turn on the projector.

8 To configure your projector for your wireless network, do one of the following:

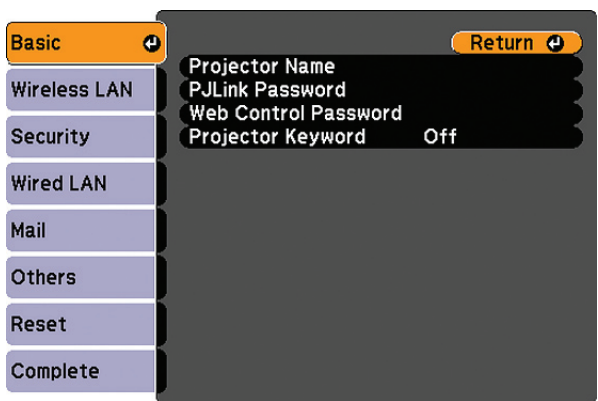
- If you're using the optional Quick Wireless Connection USB key (Windows only), insert it into the projector's USB **TypeA** port, wait for the displayed message, remove the key, and connect it to a USB port on your computer. Follow the on-screen instructions to install the driver, then run your presentation. For details, see the *User's Guide* on your projector CD.
- If you're not using the key, continue with these steps.

9 Press the **Menu** button on the remote control, select the **Network** menu, and press **Enter**.



10 Choose **Network Configuration** and press **Enter**.

11 Select the **Basic** menu and press **Enter**.

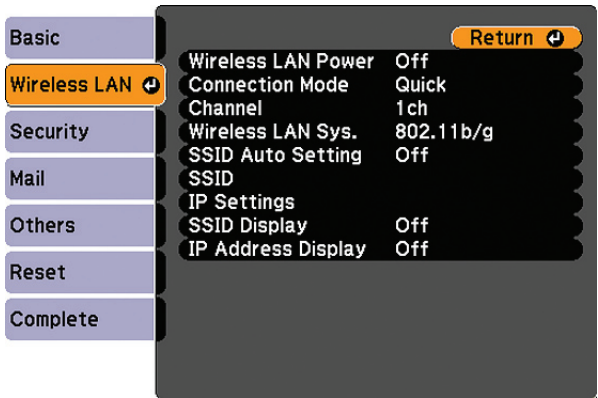


12 Select the **Projector Name** setting and enter a name (up to 16 characters long) to identify your projector over the network.

Use the displayed keyboard to enter characters. Press the arrow buttons on the remote control to highlight the characters and press **Enter** to select them.

**Note:** See the *User's Guide on the projector CD* for information on adding passwords.

13 Select the **Wireless LAN** menu and press **Enter**.



14 Select the **Connection Mode** setting and choose one of these options:

- **Quick** to connect the projector to one computer on the network
- **Advanced** to connect the projector to multiple computers on the network

15 If you selected **Quick** connection mode, select the **Channel** setting for your wireless network and turn on the **SSID Auto Setting** setting.

16 Select the type of wireless network you are using as the **Wireless LAN Sys.** setting.

17 If you selected **Advanced** connection mode, enter your network SSID (up to 32 characters) as the **SSID** setting.

18 If your network assigns addresses automatically, select **IP Settings** and turn on the **DHCP** setting. If not, turn off the **DHCP** setting and enter the projector's **IP Address**, **Subnet Mask**, and **Gateway Address**, as needed.

19 To prevent the SSID and IP address from appearing on the network standby screen, set the **SSID Display** and/or **IP Address Display** settings to **Off**.

20 When you are finished, select **Complete** and press **Enter**, then press **Enter** again to save your settings.

21 Press the **Menu** button to exit the menu system.

22 See "Install network software" for additional instructions.

## Install network software

Install the EasyMP® Network Projection software to project wirelessly over the network. Use the CD labeled *Epson Projector Software for Meeting & Presentation* to install the program. Make sure to first install the optional Epson 802.11g/b/n wireless LAN module as described in "Project wirelessly".

For instructions on installing and using your network software, see the *EasyMP Network Projection Operation Guide* on your projector CD. This guide is installed along with your projector *User's Guide*.


To monitor and control your projector over the network, download and install the EasyMP Monitor software and manual from the Epson support website. You can install links to the download pages from your projector CD, or go to [www.epson.com/support](http://www.epson.com/support) and select your projector.



# Troubleshooting


## If you see a blank screen...

If you see a blank screen or the **No signal** message after turning on your computer, check the following:

- Make sure the power light on the projector is green and not flashing, and the **A/V Mute** slide is open.
- Press the **Source Search** button on the projector or the remote control to select the computer as the image source.
- If you're using a Windows notebook, press the function key on your keyboard that lets you display on an external monitor. It may be labeled **CRT/LCD** or have an icon such as . You may have to hold down the **Fn** key while pressing it (such as **Fn + F7**).
- On a Mac®: Select **Mirror Displays** as described in the following section.

## If the projector and notebook don't display the same image...

### Windows

Try using the CRT/LCD or  key as described above. On most systems, this key lets you toggle between the LCD screen and the projector, or display on both at the same time.

If that doesn't work, check your monitor settings to make sure both the LCD screen and the external monitor port are enabled.

- 1 Windows 7:** From the Windows Control Panel, open the **Display** utility, select **Change Display Settings**, then click on **Advanced Settings**.  
  
**Windows Vista:** Right-click on the desktop and select **Personalize**, then select **Display Settings**, then click on **Advanced Settings**.  
  
**Windows XP:** From the Windows Control Panel, open the **Display** utility, select **Settings**, then click on **Advanced**.
- 2** The method for adjusting the setting varies; you may have to click a **Monitor** tab, then make sure the external Monitor port is set as your primary display and/or enabled. See the Windows online help for details.

### Mac OS X

- 1** From the Apple® menu, select **System Preferences**, then select **Display** or **Displays**.
- 2** Click **Detect Displays**.
- 3** If you're using Mac OS X 10.6.x, click **Show displays in menu bar**.

If you're using a different version of Mac OS X, select **VGA Display** or **Color LCD**, then click on **Arrangement** or **Arrange**. Make sure the **Mirror Displays** dialog box is selected. See your computer's online help for details.

# Where to get help

## Manuals

For more information about using the projector, install the manuals from your projector CD. View the guides by clicking the icons for them on your computer desktop.

## Telephone Support Services

You can speak to a service representative by calling one of the following telephone nubmers:

<b>Argentina</b>	(54 11) 5167-0300	<b>Mexico</b>	
<b>Brazil</b>	(55 11) 3956-6868	<b>Mexico City</b>	(52 55) 1323-2052
<b>Chile</b>	(56 2) 230-9500	<b>Other cities</b>	01-800-087-1080
<b>Colombia</b>	(57 1) 523-5000	<b>Peru</b>	(51 1) 418-0210
<b>Costa Rica</b>	(50 6) 2210-9555	<b>Venezuela</b>	(58 212) 240-1111
	800-377-6627		

Toll or long distance charges may apply. If you country does not appear on the list, contact the sales office in the nearest country.

## Internet Support

Visit **www.latin.epson.com** for solutions to common problems. You can download utilities and documentation, get FAQs and troubleshooting advice, or e-mail Epson. (Site available in Spanish and Portuguese.)

# Optional accessories

For a list of optional accessories, see the *User's Guide* on your projector CD.

You can purchase screens, carrying cases, or other accessories from an Epson authorized reseller. To find the nearest reseller, call Epson as described above.



Epson and EasyMP are registered trademarks, and Epson Exceed Your Vision is a registered logomark of Seiko Epson Corporation. PowerLite is a registered trademark of Epson America, Inc.

General Notice: Other product names used herein are for identification purposes only and may be trademarks of their respective owners. Epson disclaims any and all rights in those marks.

This information is subject to change without notice.

© 2010 Epson America, Inc. 11/10  
Printed in XXXXXX

CPD-28243