

# EPSON PRODUCT SUPPORT BULLETIN

---

<b>Date:</b>	04/20/2009	<b>Originator:</b>	JAM
<b>PSB #:</b>	PSB.2009.06.001	<b>Authorization:</b>	<i>Kas</i>
<b>Reference:</b>	TI 09-05e Rev. A/B	<b>Total Pages:</b>	5
<b>Product(s):</b>	PowerLite 735c / Cinema 500 / 737c / 745c / 755c / 765c / 830p / 835p / 1705c / 1715c / 6100i / 6110i / 7800p / 7850p / 7900NL / 8300i / 8300i with EasyMP.net module / 9300NL / 1815p / 1825 / 822p / 83c / 822+ / 83+ / G5000 / Pro G5150 / Pro G5350 / Pro G5200W / 1725 / 1735W / 400W / 410W / 84 / 85 / 825 / 826W PowerLite 61p / 81p / 82c / 821p / 1810 / 260d (Latin America) / 280d (Latin America) with TCP/IP to Serial converter		
<b>Subject:</b>	Release of EMP Monitor for Windows version 4.30		

---

This bulletin was created to inform you of the release of the new version 4.30 of the Epson EMP Monitor software utility.

## **Description of Change:**

Improvements have been made to the EMP Monitor software utility.

**Note:** For the PowerLite 61p / 81p / 82c / 821p / 1810 / 260d (Latin America) / 280d (Latin America) models, a serial to TCP/IP conversion adapter is necessary. The function of Auto Update does not work for these models. You need to manually click on refresh to get an updated status of projectors.

## **Reason:**

The improved points of version 4.30 are as follows:

<b>Application</b>	EMP Monitor
<b>Version upgraded</b>	Version 4.22 → Version 4.30
<b>Improved points</b>	(1) Addition of 7 new languages - Indonesian, Croat, Slovak, Bulgarian, Malay, Vietnamese, and Hebrew  Existing 27 languages - Chinese (Traditional), Netherlands, Danish, Polish, Hungarian, Czech, Romanian, Slovene, Norwegian, Swedish, Finnish, Russian, Ukrainian, Greek, Turkish, Arabic (Windows NT4 does not support), English, Japanese, French, German, Italy, Spanish, Portuguese, Chinese (Simplified), Korean, Catalan, Thai

(2) Addition of Input Source (Only PowerLite 84 / 85 / 825 / 826W)  
Previous version of EMP Monitor included USB Display, USB and LAN as one source: EasyMP.

The input source buttons for USB display, USB, and LAN are available as separate input sources as shown below:

- Old version - EMP Monitor V4.22

EMP Monitor V4.22



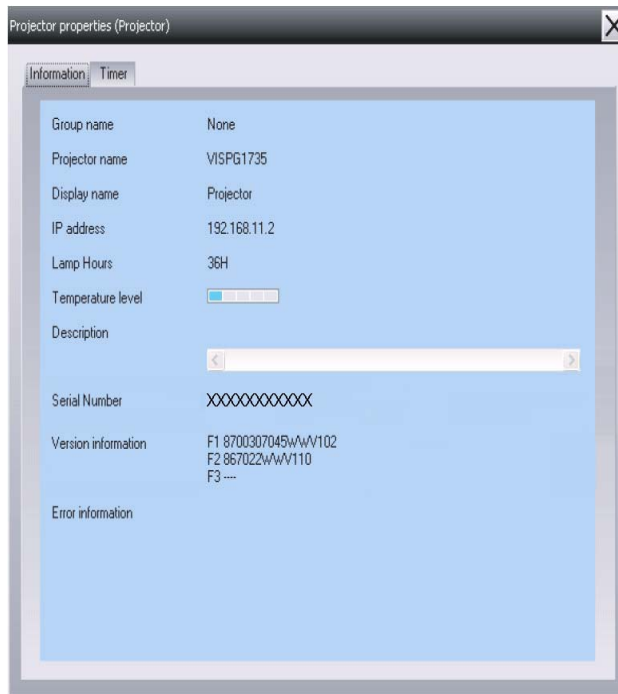
- New version - EMP Monitor V4.30

EMP Monitor V4.30



(3) New feature for the PowerLite 84 / 85 / 825 / 826W.  
Displays projector's serial number in the Menu settings

- The projector's serial number is now displayed in the projector's menu under "info",
- EMP Monitor can also display the projector's serial number as shown below:



<b>Limitations</b>	When the PowerLite1725 / 1735W exhibit a Lamp Cover Open error state, EMP Monitor cannot detect the error. The reason is that when the lamp cover is opened, the primary power source that reports the error state to EMP Monitor is turned off immediately. This is different from other models which make the secondary power source turn off under the same condition.
--------------------	---

**Note: EMP Monitor Ver. 4.xx is not compatible with EMP Monitor Ver. 3.05 and earlier versions. EMP Monitor Ver. 4.xx cannot read the setting files of EMP Monitor Ver. 3.05 and earlier versions.**

### **System Requirements:**

<b>OS</b>	<ul style="list-style-type: none"> <li>Windows 98 SE / Me / NT 4.0 (SP6) *Except Arabic and Hebrew / Windows 2000 Pro / XP Home Edition / XP Professional (32 bit) / Vista Home Basic / Home Premium / Ultimate / Business / Enterprise (32 bit) *Except Ukrainian / Vista SP1 Home Basic / Home Premium / Ultimate / Business / Enterprise (32 bit)</li> <li>Internet Explorer Ver. 5.0 or later must be installed</li> </ul>
<b>CPU</b>	Minimum: Pentium MMX 166 MHz (Recommended: Pentium II 233 MHz or higher)
<b>Memory</b>	At least 64 MB (Recommended: 128 MB or above)

<b>Available hard disk space</b>	At least 50 MB
<b>Display</b>	SVGA (800x600) or higher resolution, 32 bit or higher display color

### **Obtaining the Update:**

Download [epson13055.exe](http://www.epson.com) from [www.epson.com](http://www.epson.com) to get the version 4.30 update for EMP Monitor. The files are extracted and copied to C:\EPSON\epson13055\_emp\_monitor\_430.

This file is a self-extracting archive and will start the installation utility for EMP Monitor. Follow the on-screen instructions during the installation process.

## Software Upgrade History:

Version	Release date	Remarks
3.00	December 25, 2002	Supported PowerLite 735c
3.01	February 26, 2003	Supported PowerLite 7800p / 8300i
3.02	April 18, 2003	Supported PowerLite 7850p / 8300i with EasyMP.net option module
3.03	November 21, 2003	Supported PowerLite Cinema 500
3.04	April 1, 2004	Supported Serial -TCP/IP conversion adapter for PowerLite 61p / 81p
4.01	October 18, 2004	Supported projectors that are configured on a large-scale network.
4.02	August 29, 2005	Addition of timer function and auto search function by specifying IP addresses. Improvement of communication logs size.
4.10	May 8, 2006	Addition of new functions, Improvement of usability, and Corresponding to PowerLite 6100i.
4.20	May 15, 2007	EMP NS Connection V2.20 supports Windows Vista (Home Basic / Home Premium / Ultimate / Business / Enterprise).
4.21	September 26, 2007	Supported 25 languages
4.22	March 31, 2008	Supported 27 languages Addition of new Error Information Supported Video (BNC)
<b>4.30</b>	<b>April 3, 2009</b>	<b>Supported 34 languages</b> <b>Additional Input Sources</b> <b>Displays projector's serial number in Menu settings</b>