

GP-C831 / GP-M831

Quick Printing Guide (for NiceLabel)

Trademarks

EPSON is a registered trademark of Seiko Epson Corporation.

Exceed Your Vision is registered trademark or trademark of Seiko Epson Corporation.

NiceLabel and NiceLabel Pro are registered trademarks or trademarks of Euro Plus d.o.o. in the United States and other countries.

In this manual, the NiceLabel GUI is used with the permission of Euro Plus d.o.o.

All other trademarks are the property of their respective owners and used for identification purpose only.

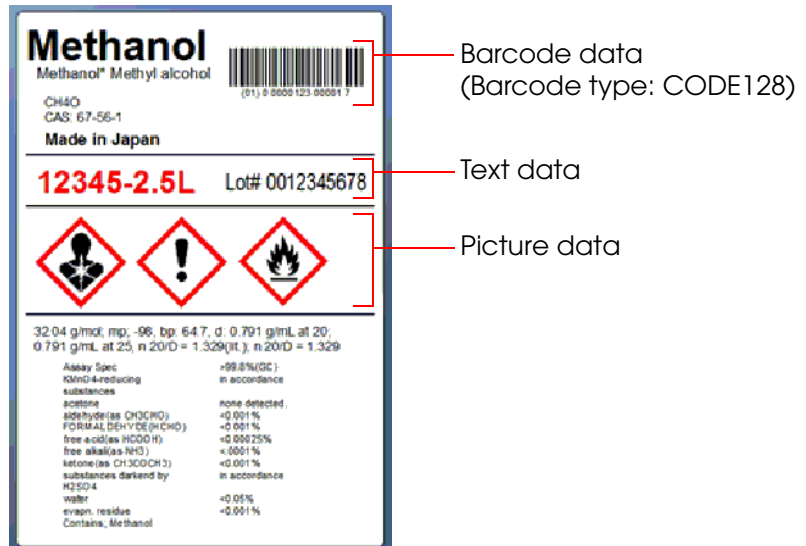
© Seiko Epson Corporation 2015. All rights reserved.

Overview

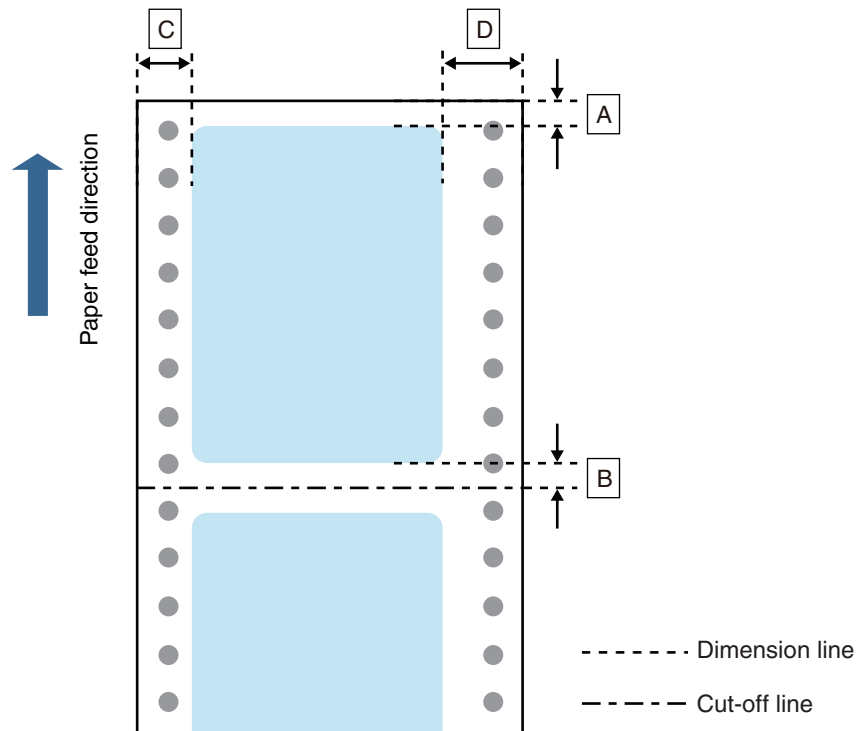
This manual contains necessary information to print on Euro Plus "NiceLabel Pro 6.3.1" (NiceLabel), using GP-C831 or GP-M831.

Here we will use the following print data as an example. Change the content based on the actual use environment.

- Printed Information:



- Media Type: Plain Label
- Paper Size: 240 x 300 mm
- Label Size: 200 x 290 mm
- Margins: Top (A): 5 mm, Bottom (B): 5 mm, Left (C): 15 mm, Right (D): 25 mm



Install NiceLabel beforehand.

See the NiceLabel manual for how to install and operate NiceLabel.

See the "GP-C830/GP-M830/GP-C831/GP-M831/GP-C832/GP-M832 User's Guide" for details on how to use the printer and printer driver.

Caution:

The usage may differ when printing with a different version or edition of NiceLabel.

Preparation of the Printer

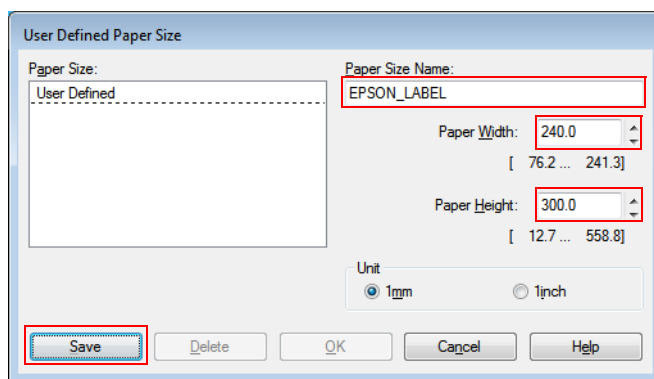
- 1 Insert the supplied CD into the computer, and set up the printer according to the setup tool instructions.

Note:

The printer driver is installed automatically if it has not been installed.

- 2 After setup is complete, display the printer driver. Specify "User Defined Paper" as follows, and then click (Save).

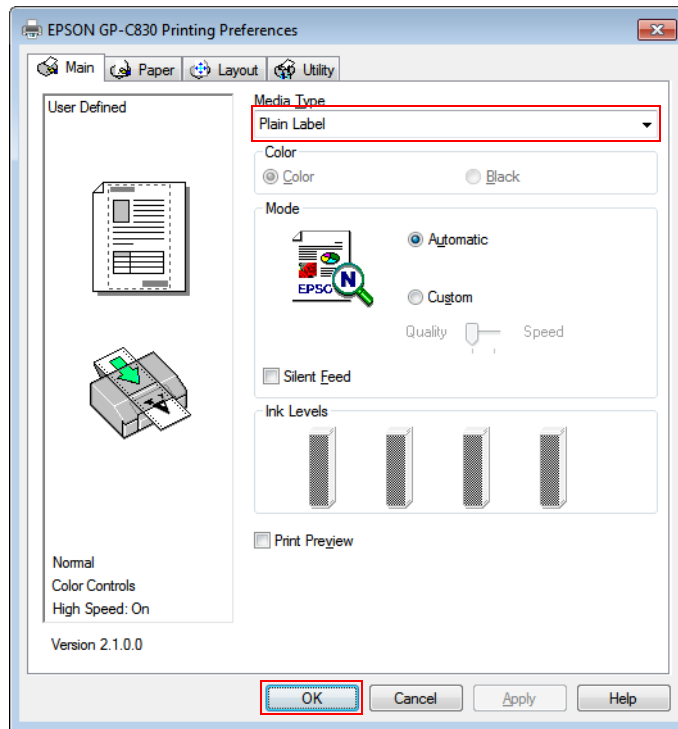
Setting Items	Setting Value
Paper Size Name	EPSON_LABEL (Optional)
Paper Width	240.0 mm
Paper Height	300.0 mm



Note:

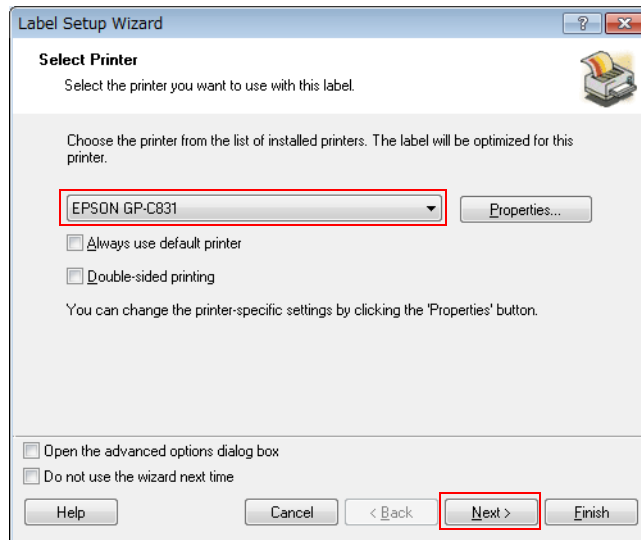
When using multiple media layouts with different media sizes, register multiple media sizes.

3 Specify the Media Type. Select "Plain Label", then click (OK).



Preparation of NiceLabel

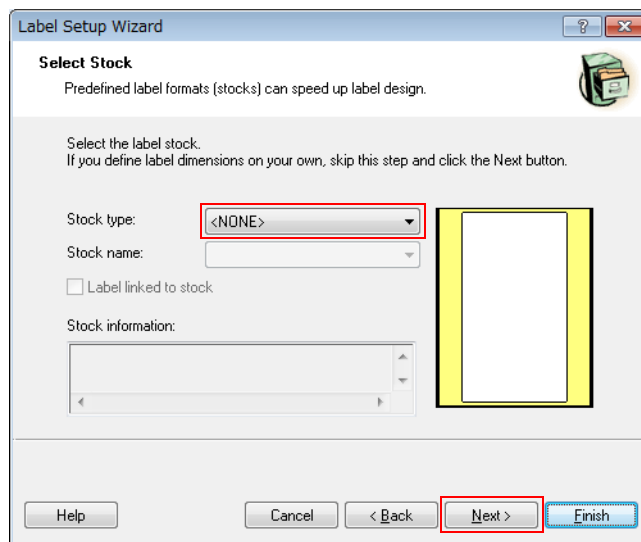
- 1 Start NiceLabel to create a new label.
- 2 Specify the printer. Select (EPSON GP-C831), then click (Next).



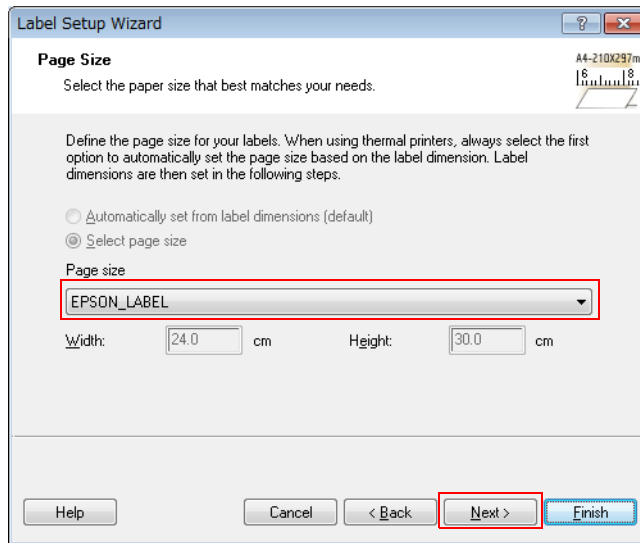
Note:

When using GP-M831, select "EPSON GP-M831".

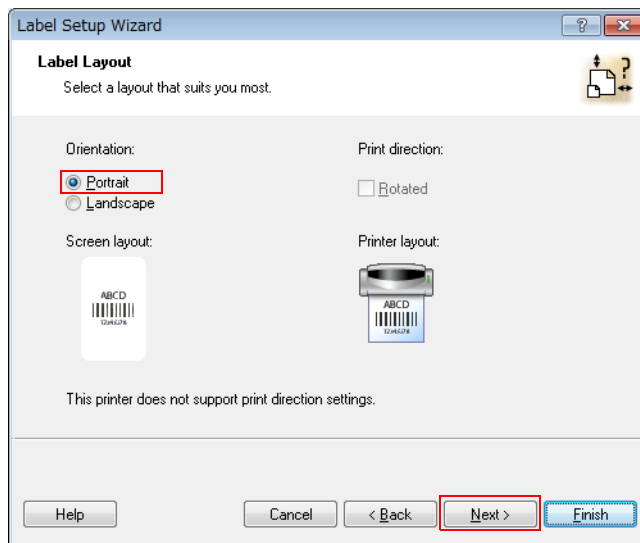
- 3 Specify the Stock type. Select (<None>), then click (Next).



- 4** Specify the Page size.
Select "EPSON_LABEL" (media size you created using "Preparation of the Printer"), and then click (Next).

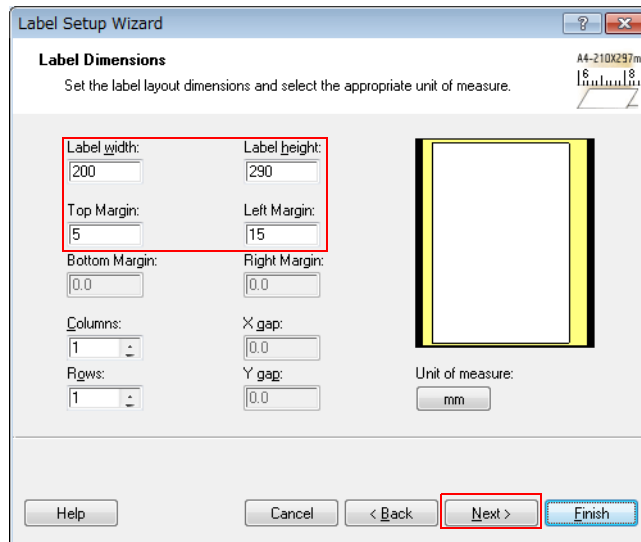


- 5** Specify the Orientation. Select (Portrait), then click (Next).



- 6** Specify the Label layout dimensions.
Specify as shown below, and then click (Next).

Setting Items	Setting Value
Label Width	200 mm
Label Height	290 mm
Top Margin	5 mm
Left Margin	15 mm



- 7** Follow the wizard instructions to create the document.

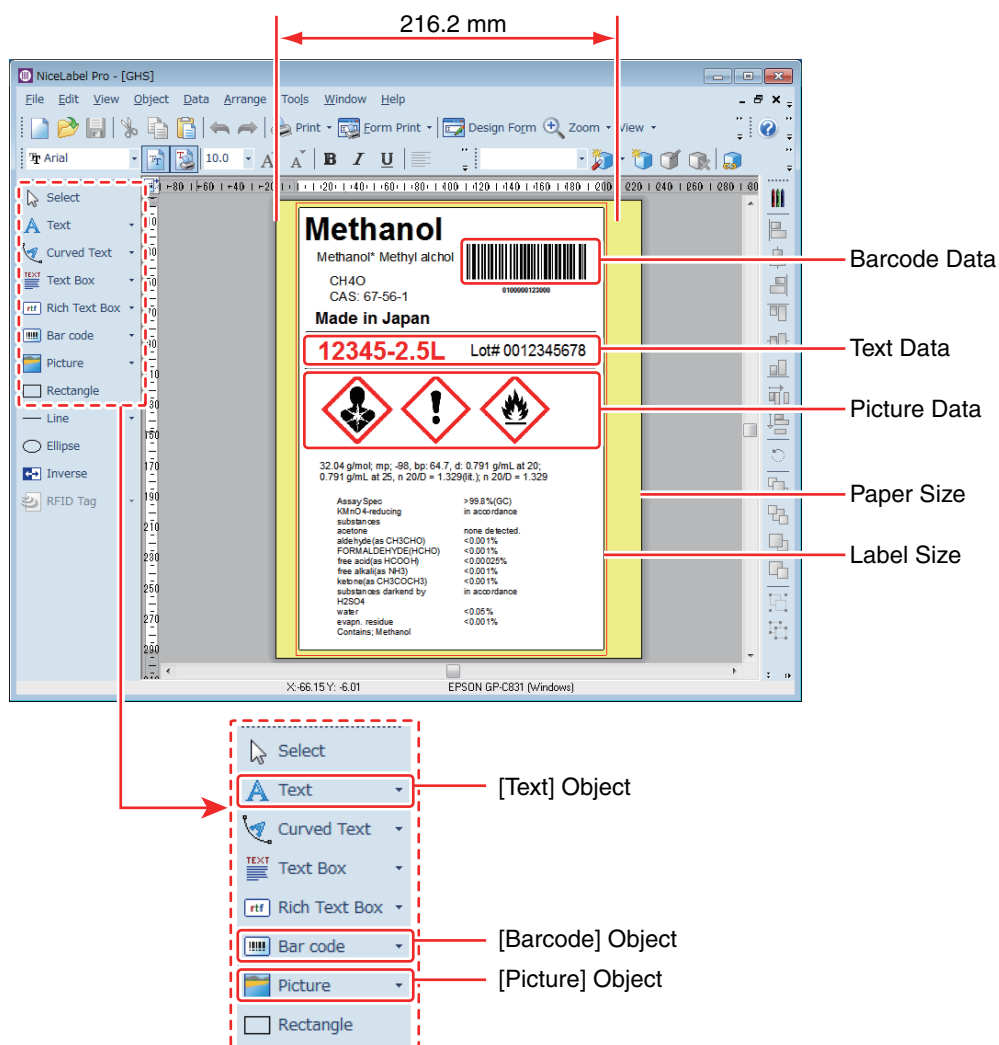
Creating Label Design

See the following and create a label design using NiceLabel.

Make sure you have the top and bottom margins of 1.5 mm and more, and left and right margins of 2.0 mm and more inside the label size.

Cautions:

- The maximum printable width for GP-C831 and GP-M831 is 216.2 mm.
- Data placed in the position more than 216.2 mm from the left edge of the media is not printed.

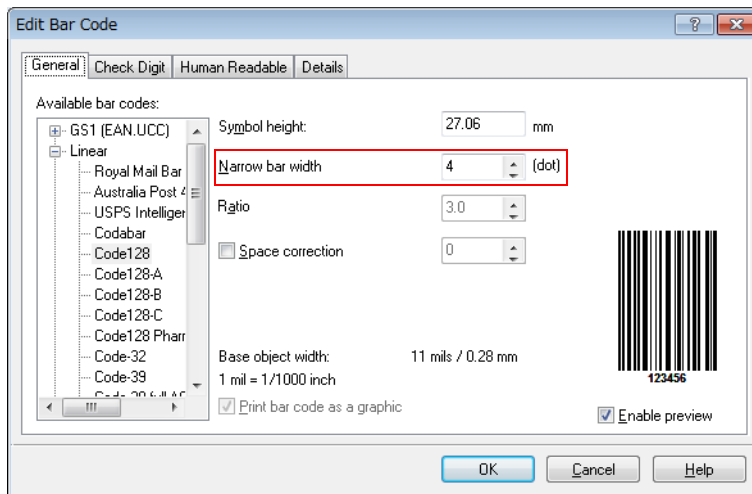


- Use the [Text] Object to insert Text Data.
- Use the [Picture] Object to insert Picture Data.
- Use the [Barcode] Object to insert Barcode Data.

For detail, refer to the NiceLabel manual.

Barcode Settings

In the barcode properties, set the Narrow bar width to more than "4" dots.



Note:

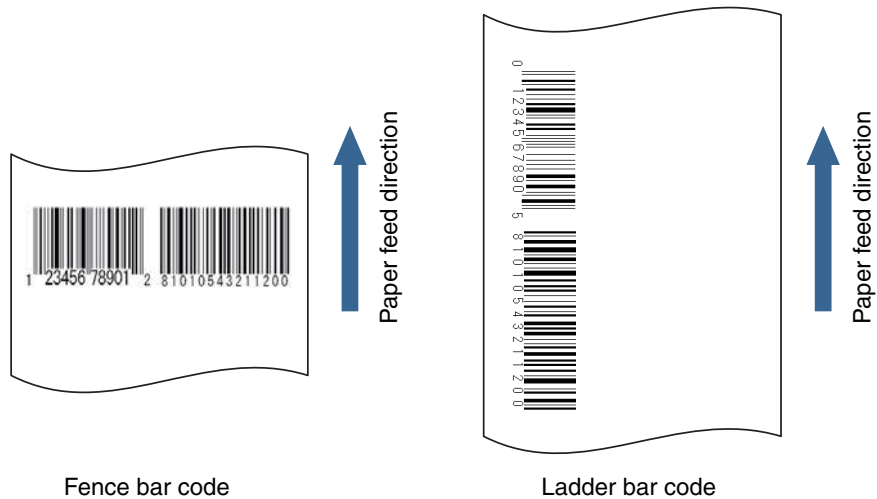
When printing a barcode, there are recommended conditions according to the Media Type. If the recommended conditions are not followed, the printed barcode may not be read properly. For the recommended conditions, see the appendix.

Appendix

Recommended conditions of the Barcode

Barcode Direction	Printer Driver settings	NiceLabel settings (Recommended minimum value)	
	Media Type	Narrow bar width	Ratio
Fence	Plain Label	4	2.5
	Matte Label, Synthetic Label, Glossy Label	4	2.5
Ladder	Plain Label	6	2.5
	Matte Label, Synthetic Label, Glossy Label	6	2.5

*: You can set the ratio when the barcode type is Codabar, CODE39, Interleaved 2 of 5, or MSI.



Cautions:

- The above values are valid when using paper recommended by EPSON.
- Before using the barcode, print the barcode and check the scan quality.

Barcode font of the Printer Driver

When printing a barcode that has higher reading quality than a NiceLabel barcode, you can use the printer driver's barcode font.

Use the following method.

- 1** In printer driver's "Barcode and 2D Symbol" settings, register the barcode font for which you specified the barcode type, size, rotation direction, and so on.
- 2** In printer driver's "Font Replacement" settings, replace the registered barcode font with TrueType font.
- 3** On a NiceLabel, enter the barcode value using the "Text" object as text data, and specify the replaced TrueType font.

Notes:

- For more details on how to set the printer driver, see "GP-C830/GP-M830/GP-C831/GP-M831/GP-C832/GP-M832 User's Guide".
- The barcode is displayed as text data on the NiceLabel screen and is not displayed as a barcode image. When you want to check the barcode image, use the printer driver's preview function.