

# Importing/Exporting Media Settings

for

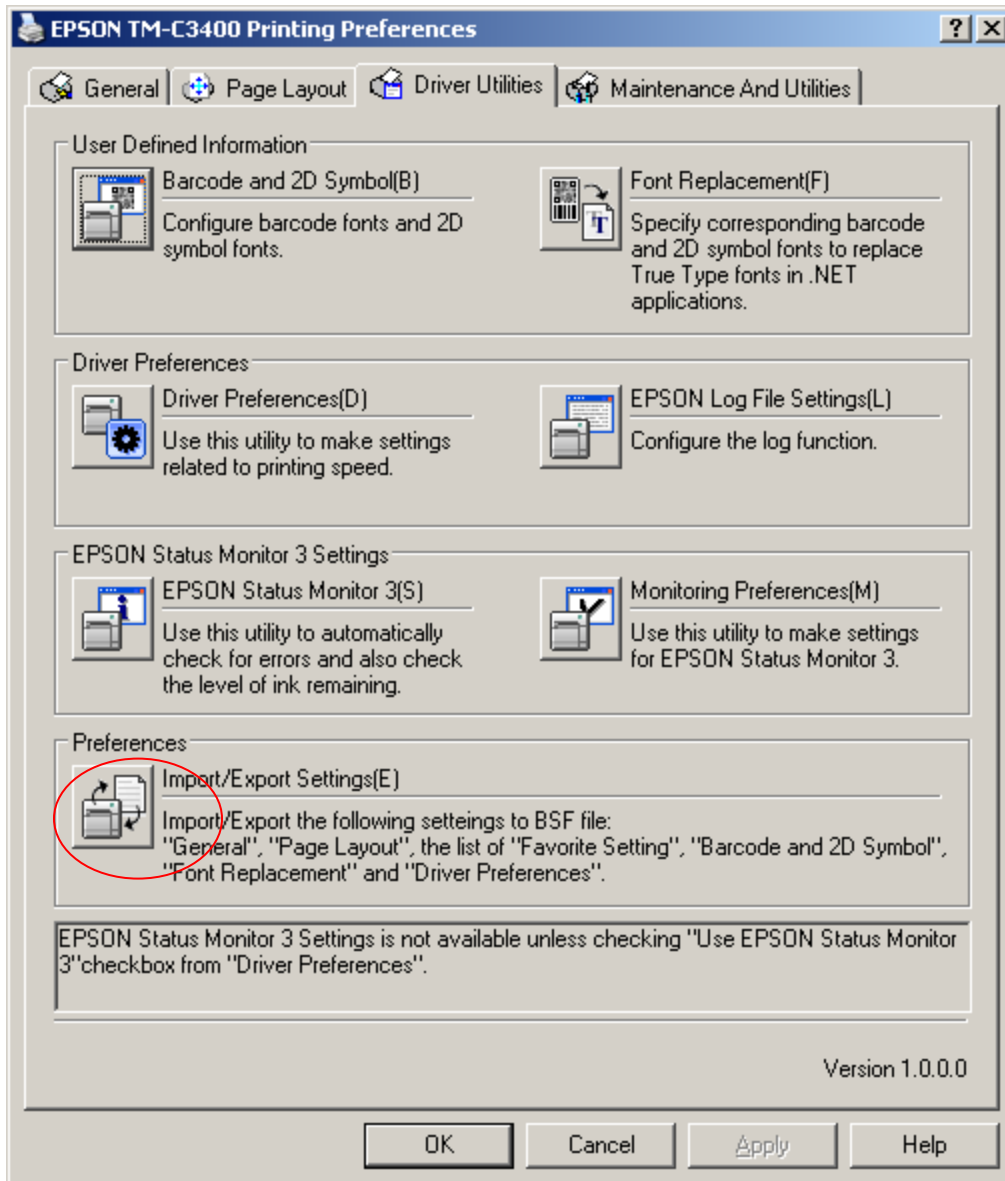
**Epson® SecurColor™ Inkjet Printer  
(TM-C3400)**



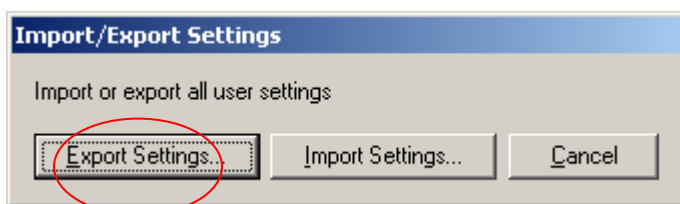
By: Ernie Villarreal  
Kelly Ng

To “Import/Export Media settings”

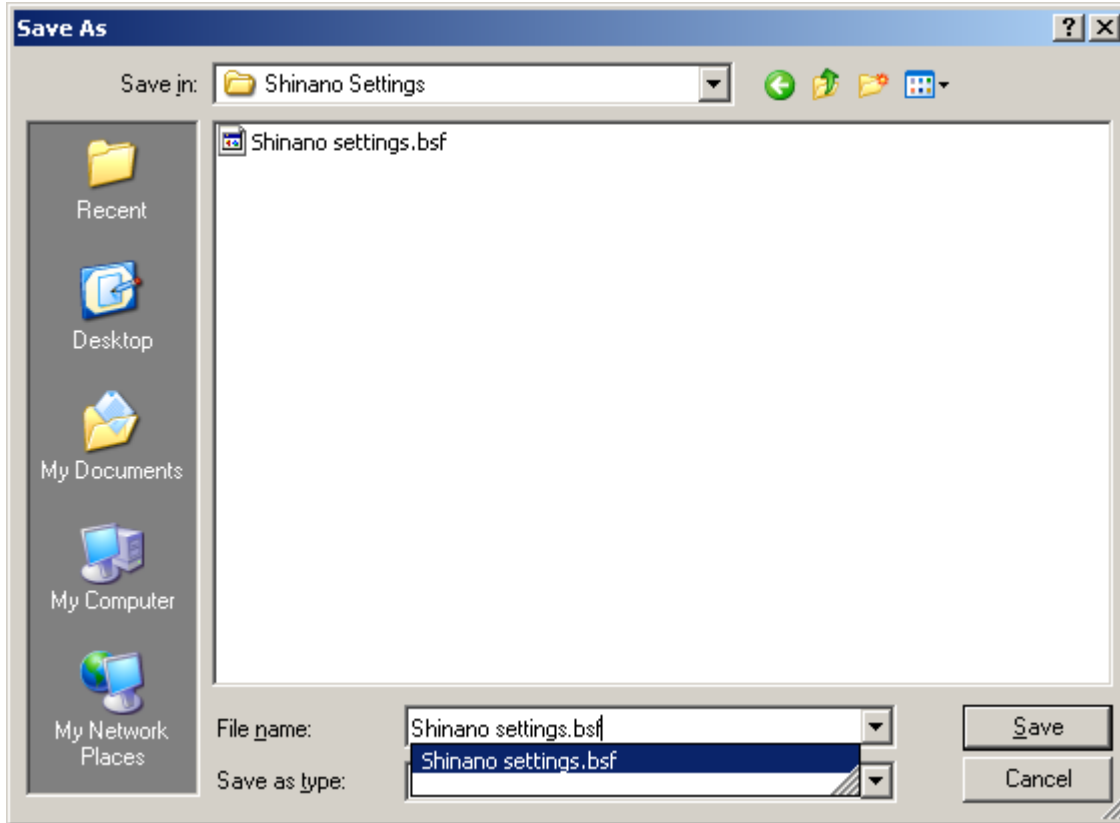
1. Right-click the printer and go to “Printing Preferences”.
2. Find the “Driver Utilities” tab across the top.
3. Click “Import/Export Settings”.



4. Select “Export Settings”.



5. Save your settings.



6. Follow Step 4 to "Import Settings".

7. Click OK.

