

# TM-DT Series Easy Setup Guide

---

Overview

Preparing the setting file

Easy Setup for the TM-DT

Restore the TMNet WebConfig

---

## Cautions

- No part of this document may be reproduced, stored in a retrieval system, or transmitted in any form or by any means, electronic, mechanical, photocopying, recording, or otherwise, without the prior written permission of Seiko Epson Corporation.
- The contents of this document are subject to change without notice. Please contact us for the latest information.
- While every precaution has been taken in the preparation of this document, Seiko Epson Corporation assumes no responsibility for errors or omissions.
- Neither is any liability assumed for damages resulting from the use of the information contained herein.
- Neither Seiko Epson Corporation nor its affiliates shall be liable to the purchaser of this product or third parties for damages, losses, costs, or expenses incurred by the purchaser or third parties as a result of: accident, misuse, or abuse of this product or unauthorized modifications, repairs, or alterations to this product, or (excluding the U.S.) failure to strictly comply with Seiko Epson Corporation's operating and maintenance instructions.
- Seiko Epson Corporation shall not be liable against any damages or problems arising from the use of any options or any consumable products other than those designated as Original EPSON Products or EPSON Approved Products by Seiko Epson Corporation.

## Trademarks

EPSON® is a registered trademark of Seiko Epson Corporation in Japan and other countries/regions.

Copyright © 2013 Seiko Epson Corporation. All rights reserved.

## For Safety

### Key to Symbols

The symbols in this manual are identified by their level of importance, as defined below. Read the following carefully before handling the product.

**CAUTION**

Provides information that must be observed to avoid damage to your equipment or a malfunction.

**NOTE**

Provides important information and useful tips.

## Restriction of Use

When this product is used for applications requiring high reliability/safety, such as transportation devices related to aviation, rail, marine, automotive, etc.; disaster prevention devices; various safety devices, etc.; or functional/precision devices, etc., you should use this product only after giving consideration to including fail-safes and redundancies into your design to maintain safety and total system reliability. Because this product was not intended for use in applications requiring extremely high reliability/safety, such as aerospace equipment, main communication equipment, nuclear power control equipment, or medical equipment related to direct medical care, etc., please make your own judgment on this product's suitability after a full evaluation.

---

## About this Manual

### Aim of the Manual

This manual presents information that is necessary for using the TM-DT Easy Setup.

The TM-DT series in this manual is a generic term for the following printers.

- TM-T88V-DT
- TM-T70II-DT
- TM-H6000IV-DT

### Manual Content

The manual is made up of the following sections:

Chapter 1	<a href="#">Overview</a>
Chapter 2	<a href="#">Preparing the setting file</a>
Chapter 3	<a href="#">Easy Setup for the TM-DT</a>
Chapter 4	<a href="#">Restore the TMNet WebConfig</a>

# Contents

■ <b>For Safety</b> .....	<b>3</b>
Key to Symbols .....	3
■ <b>Restriction of Use</b> .....	<b>3</b>
■ <b>About this Manual</b> .....	<b>4</b>
Aim of the Manual .....	4
Manual Content .....	4
■ <b>Contents</b> .....	<b>5</b>
<hr/>	
<b>Overview</b> .....	<b>7</b>
■ <b>What is Easy Setup?</b> .....	<b>7</b>
Restore the TMNet WebConfig .....	8
■ <b>Environment</b> .....	<b>9</b>
Supported printer .....	9
USB memory .....	9
■ <b>Updating the ePOS-Device</b> .....	<b>10</b>
<hr/>	
<b>Preparing the setting file</b> .....	<b>11</b>
■ <b>Setting files to save to USB memory</b> .....	<b>11</b>
■ <b>Editing the setting.ini file</b> .....	<b>12</b>
■ <b>Saving the additional content</b> .....	<b>26</b>
<hr/>	
<b>Easy Setup for the TM-DT</b> .....	<b>27</b>
■ <b>Flow of the Easy Setup</b> .....	<b>27</b>
■ <b>Connecting the USB memory</b> .....	<b>28</b>
■ <b>Checking the printing result</b> .....	<b>29</b>
Troubleshooting .....	30

---

<b>Restore the TMNet WebConfig .....</b>	<b>33</b>
■ <b>Setting files to save to USB memory .....</b>	<b>33</b>
■ <b>Creating the Setting file .....</b>	<b>34</b>
Editing setting.ini file .....	35
Restore Settings .....	35

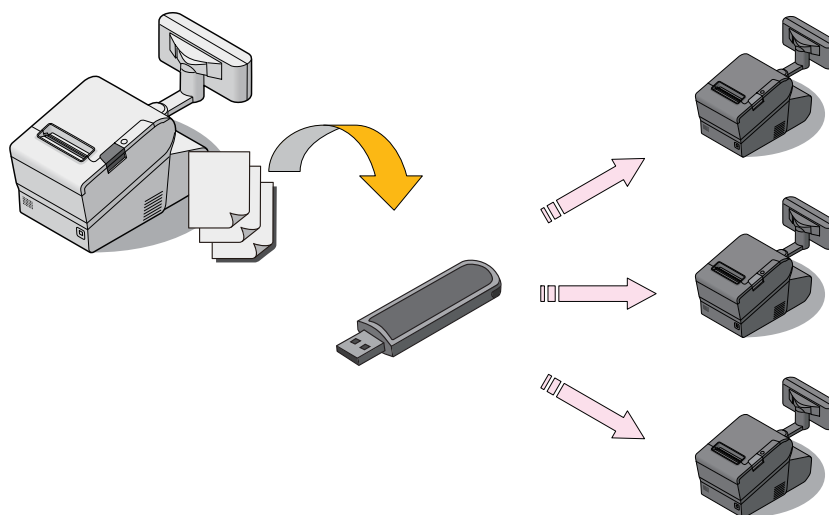
# Overview

This section explains the outline for the Easy Setup.

## *What is Easy Setup?*

Easy Setup is a function that saves the settings for the TM-DT EPSON TMNet WebConfig on USB memory, copying it to a different TM-DT. You can perform settings for multiple TM-DT devices quickly and efficiently.

You can use it for systems that use ePOS-Print API, ePOS-Print XML and Server Direct Print.



Use the following procedure to save the settings on USB memory.

- 1** Perform EPSON TMNet WebConfig settings on the TM-DT to be copied from, and save the settings file.
- 2** For network settings such as the IP address and the EPSON TMNet WebConfig settings, edit the settings.ini file attached to this document.
- 3** Copy the EPSON TMNet WebConfig setting file and the setting.ini file to the USB memory. Also, copy the Web contents file and the Web service function update file if necessary.

Perform settings on the printer to be copied to, using the following procedure.

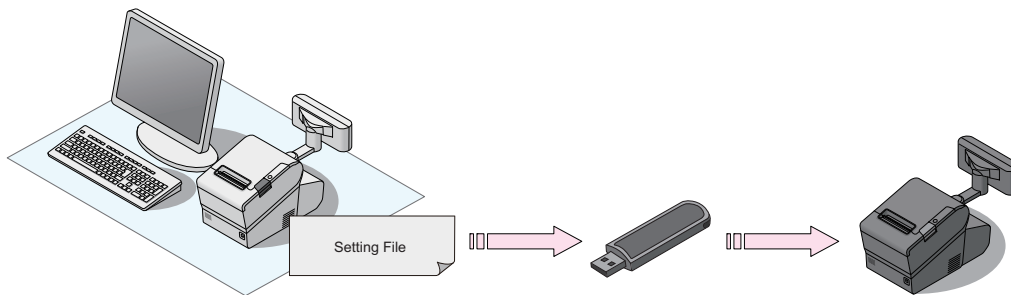
- 1 Set roll paper in the TM-DT, and turn the power on.
- 2 Insert the USB memory. Settings are started automatically, and the result is printed.

## Restore the TMNet WebConfig

You can easily restore the TMNet WebConfig settings from a file on USB memory, without using TMNet WebConfig. You can easily restore the existing settings when switching the TM-DT.

**NOTE**

The TMNet WebConfig setting file cannot be restored unless firmware versions match.





# Environment

## Supported printer

- ❑ TM-T88V-DT
- ❑ TM-T70II-DT
- ❑ TM-H6000IV-DT

## USB memory

- ❑ USB 1.1 or later
- ❑ 256 MB or more  
The necessary space varies based on the size of the Web contents file.

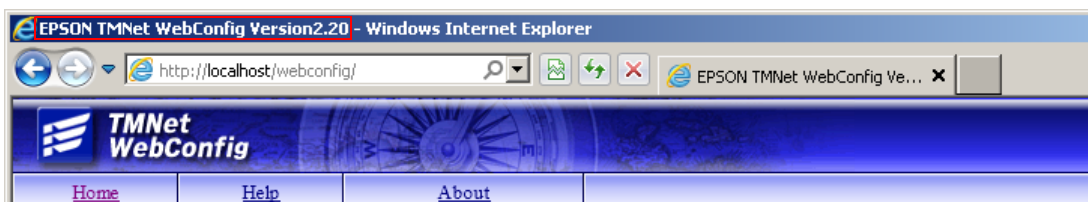
## Updating the ePOS-Device

Once you have updated the ePOS-Device, you can use the new ePOS-Device functions.

---

### Confirming the ePOS-Device version

You can confirm the version of the ePOS-Device on the EPSON TMNet WebConfig title bar.



---

### Downloading the ePOS-Device update program

Download the following file from the Epson website and save it in your local environment.

- File name: ePOS-Device System Update Package

For more information about the update method, refer to the Readme file in the ePOS-Device update package.

**CAUTION**

The ePOS-Device cannot be rolled back to an earlier version.

# Preparing the setting file

This section explains the method for creating the setting files to save on the USB memory.

## *Setting files to save to USB memory*

Save the following setting files on the USB memory in order to perform Easy Setup for the TM-DT.

File	Neces- sity	Description
setting.ini	Required	You must edit the contents of the setting.ini file to match the settings. Refer to " <a href="#">Editing the setting.ini file</a> " on page 12.
Additional contents	Optional	Additional contents refer to the Web contents to be saved on the printer if you are using ePOS-Device API, ePOS-Device XML and Server Direct Pprint.
Update files for the Web service function	Optional	Files provided by EPSON that perform updates, such as firmware, device control script file. Example : ESUP-SYS201W.bin

## Editing the setting.ini file

The setting.ini file is written as follows. Edit the contents to match your settings. Delete any areas that are not required for setting.

Different firmware versions provide different functions. If the setting.ini file from a newer version runs on an older version of the TM-DT, any functions not implemented on the old TM-DT are ignored, but the supported functions are executed.



This file is for the firmware ver.2.5.

### [General]

Administrator = Tom  
Location = Counter001

### [WiredNetwork]

IPAddressSettingMethod = Manual  
IPAddress = 172.150.1.2  
SubnetMask = 255.255.255.0  
Gateway = 172.150.1.1  
DNSServerSettingMethod = Manual  
DNSServerAddress1 = 172.150.1.201  
DNSServerAddress2 = 172.150.1.202  
DNSServerAddress3 = 172.150.1.203

Wired LAN settings

### [Wireless]

NetworkMode = Infrastructure  
SSID = SSID.ueda  
AuthenticationMethod = WPA2  
EncryptionMethod = AES  
DefaultWEPKey = 1  
WEPKey1 = epson  
WEPKey2 = 12345  
WEPKey3 = 12345  
WEPKey4 = 12345  
PresharedKey = epson1234

Wireless LAN settings

### [WirelessNetwork]

IPAddressSettingMethod = Manual  
IPAddress = 172.160.20.2  
SubnetMask = 255.255.255.0  
Gateway = 172.160.20.1  
DNSServerSettingMethod = Manual  
DNSServerAddress1 = 172.160.20.201  
DNSServerAddress2 = 172.160.20.202  
DNSServerAddress3 = 172.160.20.203

<pre>[WebContents] AutoUpdate = Enable Frequency = Weekly Timing = Wed UpdateTimeHour = 23 UpdateTimeMinute = 59 FileURL = http://webcontent.server.jp/dt/webcontents.zip UseProxy = Enable ProxyURL = http://proxy.host.jp:8080 AppliedLocalFile = samplestylesheet.zip</pre>	Settings when registering Web contents
<pre>[ServerDirectPrint] Use = Enable ID = directPrintID-1202 Password = pass URL = http://direct.print.server.jp/ Interval = 300</pre>	Settings when using the Server Direct Print
<pre>[StatusNotification] Use = Enable ID = statusID-1202 Password = pass URL = http://status.notify.server.jp/ Interval = 300</pre>	Settings when using the Status notification function
<pre>[Time] UseTimeServer = Enable TimeServer = ntp.jst.mfeed.ad.jp Timezone = Tokyo Standard Time DaylightSavingTime = Disable</pre>	Settings when using TimeServer
<pre>[Password] NewPassword = epson Password = epson</pre>	
<pre>[Restore] FileURL = http://fileurl.server.jp/dt/restore.dhc UseProxy = Enable ProxyURL = http://proxy.host.jp:8081 AppliedLocalFile =</pre>	
<pre>[WebServiceUpdate] FileURL = http://fileurl.server.jp/dt/update.bin UseProxy = Enable ProxyURL = http://proxy.host.jp:8082 AppliedLocalFile =</pre>	Settings when using the Webservice update function

[Shutdown] PowerButton = Enable ePOSDevice = Enable RequirePassword = Enable	Settings when shutting down the product from the ePOS-Device
[SSL] UseSSL = Enable PrivateKeyFile = server.key CertificateFile = server.crt CertificateChainFile = chain.cer	Settings when using the SSL

Section name	Parameter	Description
		Valid value
General	Administrator	Designates the administrator name displayed on the WebConfig (Admin information) page.
		Within 255 alphanumeric characters.
	Location	Designates the installation location displayed on the WebConfig (Admin information) page.
		Within 255 alphanumeric characters.
WiredNetwork	Delete this item if you are not using wired LAN.	
	IPAddressSetting Method	Designates the method for setting the IP address.
		"Auto" / "Manual"
IPAddress	Designates the IP address. <ul style="list-style-type: none"> <li>• This must be set if the value for IPAddressSettingMethod is "Manual".</li> <li>• This is ignored if the value for IPAddressSettingMethod is "Auto".</li> <li>• Format of (numerical value 1 to 255).(numerical value 0 to 255).(numerical value 0 to 255).(numerical value 0 to 254)</li> <li>• The following address(es) cannot be used.            127.0.0.1            224.0.0.0 to 239.255.255.255            240.0.0.0 to 255.255.255.255</li> </ul>	

Section name	Parameter	Description
		Valid value
WiredNetwork	SubnetMask	Designates the subnet mask.
		<ul style="list-style-type: none"> <li>This must be set if the value for IPAddressSettingMethod is "Manual".</li> <li>This is ignored if the value for IPAddressSettingMethod is "Auto".</li> </ul>
	Gateway	Designates the default gateway.
		<ul style="list-style-type: none"> <li>This is ignored if the value for IPAddressSettingMethod is "Auto".</li> <li>Format of (numerical value 1 to 255).(numerical value 0 to 255).(numerical value 0 to 255).(numerical value 0 to 254)</li> <li>The following address(es) cannot be used. 0.0.0.0 127.0.0.1 255.255.255.255 255.0.255.0</li> </ul>
	DNSServerSetting Method	Designates the method for setting the DNS server address.
		<ul style="list-style-type: none"> <li>If the value for "IPAddressSettingMethod" is "Auto", designate "Auto" or "Manual".</li> <li>If the value for "IPAddressSettingMethod" is "Manual", designate "Manual".</li> </ul>
DNSServerAddress1~3	Designates the IP addresses for the DNS servers.	
	<p>"1 - 3" indicates the order of use for the DNS servers. They are used in ascending order, starting with 1.</p> <ul style="list-style-type: none"> <li>If the value for "DNSServerSettingMethod" is "Manual", "DNSServerAddress1" must be designated.</li> <li>This is ignored if the value for "DNSServerSettingMethod" is "Auto".</li> </ul>	
Wireless	Delete this item if you are not using wireless LAN.	
	NetworkMode	Designates the operation mode for wireless LAN.
		"Adhoc" / "Infrastructure"

Section name	Parameter	Description
		Valid value
Wireless	SSID	Designates the SSID.
		1 to 32 alphanumeric characters (excluding half-width spaces, pound signs, and double quotation marks)
	AuthenticationMethod	Designates the authentication method. <ul style="list-style-type: none"> <li>If the value for "NetworkMode" is "Adhoc", designate "OpenSystem".</li> <li>If the value for "NetworkMode" is "Infrastructure", designate "OpenSystem", "SharedKey", "WPA", "WPA2", "WPAPSK", or "WPA2PSK".</li> </ul>
		"OpenSystem" / "SharedKey" / "WPA" / "WPA2" / "WPAPSK" / "WPA2PSK"
	EncryptionMethod	Designates the encryption method. <ul style="list-style-type: none"> <li>If the value for "Authentication Method" is "OpenSystem", designate "None" or "WEP".</li> <li>If the value for "Authentication Method" is "SharedKey", designate "WEP".</li> <li>If the value for "Authentication Method" is "WPA", "WPA2", "WPAPSK", or "WPA2PSK", designate "TKIP" or "AES".</li> </ul>
		"None" / "WEP" / "TKIP" / "AES"
	DefaultWEPKey	Designates the WEP key in use (1 to 4).
		Integer from 1 to 4
	WEPKey1 to 4	Designates the WEP key that corresponds to the WEP key number. <ul style="list-style-type: none"> <li>For passphrases, use either 5 or 10 alphanumeric characters (0 to 9, a to z, A to Z).</li> <li>For hexadecimals, use either 10 or 26 alphanumeric characters (0 to 9, a to f, A to F).</li> </ul>
PresharedKey	Designates the pre-shared key used when using WPA or WPA2. <ul style="list-style-type: none"> <li>For passphrases, use 8 to 63 alphanumeric characters (0 to 9, a to z, A to Z).</li> <li>For hexadecimals, use 64 alphanumeric characters (0 to 9, a to z, A to Z).</li> </ul>	
WirelessNetwork		Delete this item if you are not using wireless LAN.
	IPAddressSettingMethod	Designates the method for setting the IP address.
		"Auto" / "Manual"



Section name	Parameter	Description
		Valid value
WirelessNetwork	IPAddress	Designates the IP address.
		<ul style="list-style-type: none"> <li>This must be set if the value for IPAddressSettingMethod is "Manual".</li> <li>This is ignored if the value for IPAddressSettingMethod is "Auto".</li> </ul>
	SubnetMask	<ul style="list-style-type: none"> <li>Format of (numerical value 1 to 255).(numerical value 0 to 255).(numerical value 0 to 255).(numerical value 0 to 254)</li> <li>The following address(es) cannot be used. 127.0.0.1 224.0.0.0 to 239.255.255.255 240.0.0.0 to 255.255.255.255</li> </ul>
		<ul style="list-style-type: none"> <li>Format of (numerical value 1 to 255).(numerical value 0 to 255).(numerical value 0 to 255).(numerical value 0 to 254)</li> <li>The following address(es) cannot be used. 0.0.0.0 127.0.0.1 255.255.255.255 255.0.255.0</li> </ul>
Gateway	Designates the default gateway.	
	<ul style="list-style-type: none"> <li>This is ignored if the value for IPAddressSettingMethod is "Auto".</li> <li>Format of (numerical value 0 to 255).(numerical value 0 to 255).(numerical value 0 to 255).(numerical value 0 to 254)</li> <li>The following address cannot be used. 127.0.0.1</li> </ul>	
DNSServerSetting Method	Designates the method for setting the DNS server address.	"Auto" / "Manual"

Section name	Parameter	Description
		Valid value
WirelessNetwork	DNSServerAddresses 1 to 3	Designates the IP addresses for the DNS servers. "1 to 3" indicates the order of use for the DNS servers. They are used in ascending order, starting with 1.
		<ul style="list-style-type: none"> <li>If the value for "DNSServerSettingMethod" is "Manual", "DNSServerAddress1" must be designated.</li> <li>If the value for "DNSServerSettingMethod" is "Auto", this is ignored.</li> </ul>
Printer-%X% (Firmware version 2.2 or later)		<ul style="list-style-type: none"> <li>Register a TM printer to be used for ePOS-Device API or ePOS-Device XML.</li> <li>Enter an integer of 1 or greater for %X%. (Example: Printer-1) Multiple printers can be registered at once by duplicating sections in which the %X% of this section was changed.</li> <li>Setting information for this printer is required. Setting information for additional printers is optional.</li> <li>For this printer's settings, you can designate "" for the IP address parameter and change only the device ID.</li> </ul>
	DeviceID	Designates the device ID of the printer.
		1 to 30 alphanumeric characters/underscores/periods/hyphens
	Model	Designates the model of the TM printer.
		For more information about printers that can be designated, see <a href="#">"Environment" on page 9</a> .
	IPAddress	Designates the IP address.
		<ul style="list-style-type: none"> <li>To change the device ID for this printer, designate "" (empty string).</li> <li>To register a TM printer, designate the IP address of the TM printer.</li> </ul>
		<ul style="list-style-type: none"> <li>Format of (numerical value 0 to 255).(numerical value 0 to 255).(numerical value 0 to 255).(numerical value 0 to 254)</li> <li>The following address(es) cannot be used. 127.0.0.1 224.0.0.0 to 239.255.255.255 240.0.0.0 to 255.255.255.255</li> </ul>

Section name	Parameter	Description
		Valid value
Printer-%X% (Firmware version 2.2 or later)	RetryInterval	The communication retry interval is designated in units of milliseconds. This setting is ignored for this printer.
		Integer between 100 and 60,000
WebContents		Delete this item if you are not registering Web contents in the printer.
	AutoUpdate	Designates whether to enable / disable automatic updates for Web contents.
		"Enable" / "Disable"
	Frequency	Designates the frequency for automatic updates.
		"Hour" / "Daily" / "Weekly" / "Monthly"
	Timing	Designates the timing for automatic updates. <ul style="list-style-type: none"> <li>This must be set if the value for "Frequency" is "Hour".</li> <li>This is ignored if the value for "Frequency" is "Daily".</li> <li>This must be set if the value for "Frequency" is "Weekly".</li> <li>This must be set if the value for "Frequency" is "Monthly".</li> </ul>
<ul style="list-style-type: none"> <li>If the value for "Frequency" is "Hour", designate "1", "2", "3", "4", "6", "8", or "12".</li> <li>If the value for "Frequency" is "Weekly", select "Sunday", "Monday", "Tuesday", "Wednesday", "Thursday", "Friday", or "Saturday".</li> <li>If the value for "Frequency" is "Monthly", designate an integer from 1 to 31.</li> </ul>		
UpdateTimeHour	Designates the "hour" for the updates. <ul style="list-style-type: none"> <li>This must be set if the value for "Frequency" is "Daily", "Weekly", or "Monthly".</li> <li>This is ignored if the value for "Frequency" is "Hour".</li> </ul>	
	Integer from 0 to 23	

Section name	Parameter	Description
		Valid value
WebContents	UpdateTimeMinute	Designates the "minute" for the updates. <ul style="list-style-type: none"> <li>This must be set if the value for "Frequency" is "Daily", "Weekly", or "Monthly".</li> <li>This is ignored if the value for "Frequency" is "Hour".</li> </ul>
		Integer from 0 to 59
	FileURL	Designates the URL to obtain Web contents from.
		Alphanumeric characters <ul style="list-style-type: none"> <li>The protocol is in http or https format.</li> <li>The expansion is zip.</li> </ul>
	UseProxy	Designates whether to use a proxy server or not. <ul style="list-style-type: none"> <li>This is ignored if "FileURL" is not designated.</li> </ul>
		"Enable" / "Disable"
	ProxyURL	Designates the URL of the proxy server. <ul style="list-style-type: none"> <li>If the value for "UseProxy" is "Enable", this must be set.</li> <li>This is ignored if "FileURL" is not designated.</li> </ul>
		Within 255 alphanumeric characters. <ul style="list-style-type: none"> <li>The protocol is in http or https format.</li> </ul>
	AppliedLocalFile	This is the zip file for the Web contents to be decompressed. Designates the file in the same folder as this file (setting.ini).
		Valid file name with the "zip" extension
ServerDirectPrint	Delete this item if you are not using the server direct print.	
	Use	Designates whether to enable / disable the Server Direct Print function.
		"Enable" / "Disable"
	ID	Designates the ID to be used when sending print data requests to the server. <ul style="list-style-type: none"> <li>This must be set if the value for "Use" is "Enable".</li> </ul>
		Within 30 alphanumeric characters (only underscores, periods, and hyphens) Null characters can also be designated.
	Password	Designates the password to be used when sending print data requests to the server. <ul style="list-style-type: none"> <li>This must be set if the value for "Use" is "Enable".</li> </ul>
		Within 30 alphanumeric characters (only underscores, periods, and hyphens) Null characters can also be designated.
	URL	Designates the print data request destination URL. <ul style="list-style-type: none"> <li>This must be set if the value for "Use" is "Enable".</li> </ul>
		Within 255 alphanumeric characters. <ul style="list-style-type: none"> <li>The protocol is in http or https format.</li> </ul>

Section name	Parameter	Description
		Valid value
ServerDirectPrint	Interval	Designates the standby time from the complete acquisition of print data until the next acquisition process.
		Integer from 1 to 86,400.
StatusNotification	Delete this item if you are not using the status notification.	
	Use	Designates whether to enable / disable the Status notification function.
		"Enable" / "Disable"
	ID	Designates the ID used when notifying the server of the status.
		<ul style="list-style-type: none"> <li>This must be set if the value for "Use" is "Enable".</li> </ul>
		Within 30 alphanumeric characters (only underscores, periods, and hyphens) Null characters can also be designated.
	Password	Designates the password used when notifying the server of the status.
		<ul style="list-style-type: none"> <li>This must be set if the value for "Use" is "Enable".</li> </ul>
		Within 30 alphanumeric characters (only underscores, periods, and hyphens) Null characters can also be designated.
	URL	Designates the URL to send the status notification to.
<ul style="list-style-type: none"> <li>This must be set if the value for "Use" is "Enable".</li> </ul>		
Within 255 alphanumeric characters. <ul style="list-style-type: none"> <li>The protocol is in http or https format.</li> </ul>		
Interval	Designates the wait period from when a status is notified to the next notification operation.	
	<ul style="list-style-type: none"> <li>This must be set if the value for "Use" is "Enable".</li> </ul> Integer from 1 to 86,400.	
Time	Delete this item if not synchronizing with TimeServer.	
	UseTimeServer	Designates whether to perform synchronization with TimeServer or not.
		"Enable" / "Disable"
	TimeServer	Designates the TimeServer name.
		<ul style="list-style-type: none"> <li>If the value for "UseTimeServer" is "Enable", this must be set.</li> </ul> Within 250 alphanumeric characters.
	Timezone	Designates the timezone.
		You can acquire a list for the timezone ID using "Libtime get time list". Timezone ID defined for each OS / locale
	DaylightSavingTime	Designates whether there is daylight saving time or not.
<ul style="list-style-type: none"> <li>If "Timezone" is not designated, this is ignored.</li> </ul> "Enable" / "Disable"		

Section name	Parameter	Description
		Valid value
Shutdown		
(Firmware version 2.5 or later)	PowerButton	Designates whether to enable / disable shutdown when pressed power button.
		"Enable" / "Disable"
	ePOSDevice	Designates whether to enable / disable shutdown from the ePOS-Device API.
		"Enable" / "Disable"
	RequirePassword	Designates whether shutdown from the ePOS-Device API requires password authentication.
		"Enable" / "Disable"
SSL		
(Firmware version 2.5 or later)	UserSSL	Designates whether to enable / disable SSL communication.
		"Enable" / "Disable"
	PrivateKeyFile	Designates the private key file(*.*).
		Valid file name any extension <ul style="list-style-type: none"> <li>• This must be set if the value for SSL is "Enable".</li> <li>• This is ignored if the value for SSL is "Disable".</li> </ul>
	CertificateFile	Designates the certificate file(*.*).
		Valid file name any extension <ul style="list-style-type: none"> <li>• This must be set if the value for SSL is "Enable".</li> <li>• This is ignored if the value for SSL is "Disable".</li> </ul>
	CertificateChain-File	Designates the certificate chain file(*.*).
		Valid file name any extension <ul style="list-style-type: none"> <li>• This is ignored if the value for SSL is "Disable".</li> </ul>
Password		
	NewPassword	Designates the password set in WebConfig for the TM-DT to be copied.
		Within 30 alphanumeric characters.
	Password	For authentication, designates the password set in WebConfig for the TM-DT to be copied.
		The initial setting is "epson". This is a necessary item for the TM-DT to be copied. Within 30 alphanumeric characters.

Section name	Parameter	Description
		Valid value
Restore		<ul style="list-style-type: none"> <li>• If designating the file name (saved in the same folder of the USB memory) which has the WebConfig settings saved, designate the file name in AppliedLocalFile.</li> <li>• If you are loading from another server, designate FileURL, UseProxy, and ProxyURL. These items will be input in the "Designate the file URL" item on WebConfig's (Settings)-(Admin information)-(Save/restore settings) page. After performing Easy Setup settings, under the set printer's WebConfig, click the "Apply the setting file" button to download the setting file from the designated server and apply those settings.</li> </ul>
	FileURL	Designates the URL for the file to perform the restore.
		Within 255 alphanumeric characters. <ul style="list-style-type: none"> <li>• The protocol is in http or https format.</li> </ul>
	UseProxy	Designates whether to use a proxy server or not.
		<ul style="list-style-type: none"> <li>• If FileURL is not designated, this is ignored.</li> </ul> "Enable" / "Disable"
	ProxyURL	Designates the URL of the proxy server.
<ul style="list-style-type: none"> <li>• If the value for UseProxy is "Enable", this must be set.</li> <li>• If FileURL is not designated, this is ignored.</li> </ul> Within 255 alphanumeric characters. <ul style="list-style-type: none"> <li>• The protocol is in http or https format.</li> </ul>		
AppliedLocalFile	Designates the back-up file to be applied.	
	Designates the file in the same folder as this file (setting.ini). Valid file name with the "dhc" extension.	
WebServiceUpdate		This setting is for updating WebConfig using the WebService update file. If you will not use this function, delete this item.
	FileURL	Designates the URL for the package that can be applied for the WebService function update.
		Within 255 alphanumeric characters. <ul style="list-style-type: none"> <li>• The protocol is in http or https format.</li> </ul>
	UseProxy	Designates whether to use a proxy server or not.
		<ul style="list-style-type: none"> <li>• This is ignored if "FileURL" is not designated.</li> </ul> "Enable" / "Disable"
	ProxyURL	Designates the URL of the proxy server.
<ul style="list-style-type: none"> <li>• If the value for "UseProxy" is "Enable", this must be set.</li> <li>• This is ignored if "FileURL" is not designated.</li> </ul> Within 255 alphanumeric characters. <ul style="list-style-type: none"> <li>• The protocol is in http or https format.</li> </ul>		

Section name	Parameter	Description
		Valid value
WebServiceUpdate	AppliedLocalFile	Designates the update package to be applied. Designates the file in the same folder as this file (setting.ini). If two or more update files are specified, the update packages are applied in the order as written. To specify two or more update packages, list the file names separated by a comma (,).
		Valid file name with the "bin" extension.
NetworkPrinter-%X% (Firmware version 2.2 or later)		<ul style="list-style-type: none"> <li>Change the network settings for the network-connected TM printer. For the network settings of this printer, write to the WiredNetwork section or the WirelessNetwork section.</li> <li>Enter an integer of 1 or greater for %X%. (Example: NetworkPrinter-1) Multiple printers can be registered at once by duplicating sections in which the %X% of this section was changed.</li> <li>To add this section to the setting.ini file, be sure to perform kitting with the TM printer connected.</li> <li>To set wireless LAN, set all related parameters.</li> </ul>
	MACAddress	Designates the MACAddress for the TM printer whose settings will be changed. Check the status sheet of the TM printer for the MAC address.
		Use the following format. (00~FF):(00~FF):(00~FF):(00~FF):(00~FF):(00~FF)
	HostName	Specifies the HostName of the TM printer for which settings will be changed. This setting is ignored if a MAC address is specified.
		alphanumeric characters and symbols
	IPAddressSetting-Method	Designates the method for setting the IP address.
		"Auto" / "Manual"
	APIPA	Designates whether to enable / disable the APIPA.
"Enable" / "Disable"		
IPAddress	Designates the IP address.	
	<ul style="list-style-type: none"> <li>If the value for "IPAddressSettingMethod" is "Manual", this must be set.</li> <li>If the value for "IPAddressSettingMethod" is "Auto", this is ignored.</li> <li>Format of (numerical value 1 to 255).(numerical value 0 to 255).(numerical value 0 to 255).(numerical value 0 to 254)</li> <li>The following address(es) cannot be used. 127.0.0.1 224.0.0.0 to 239.255.255.255 240.0.0.0 to 255.255.255.255</li> </ul>	



Section name	Parameter	Description
		Valid value
NetworkPrinter- %X%	SubnetMask	Designates the subnet mask.
		<ul style="list-style-type: none"> <li>If the value for "IPAddressSettingMethod" is "Manual", this must be set.</li> <li>If the value for "IPAddressSettingMethod" is "Auto", this is ignored.</li> </ul>
	Gateway	Designates the default gateway.
		<ul style="list-style-type: none"> <li>This is ignored if the value for IPAddressSettingMethod is "Auto".</li> <li>Format of (numerical value 0 to 255).(numerical value 0 to 255).(numerical value 0 to 255).(numerical value 0 to 255).</li> <li>The following address(es) cannot be used. 0.0.0.0 127.0.0.1 255.255.255.255 255.0.255.0</li> </ul>
	NetworkMode	Designates the operation mode for wireless LAN.
		"Adhoc" / "Infrastructure"
	SSID	Designates the SSID.
		1 to 32 alphanumeric characters and symbols (excluding spaces)
	AdhocChannel	Designates the adhoc channel used when the wireless LAN operation mode is "Adhoc".
		If "Infrastructure" is used for the wireless LAN operation mode designates "1".
Communication-Standard	Designates the communication standard for wireless LAN.	
	"802.11b" / "802.11b/g/n" / "802.11b/g/n"	
Authentication-Method	Designates the authentication method.	
	<ul style="list-style-type: none"> <li>If the value for "NetworkMode" is "Adhoc", designate "OpenSystem" or "SharedKey".</li> <li>If the value for "NetworkMode" is "Infrastructure", designate "OpenSystem", "SharedKey", "WPA", "WPA2", "WPAPSK", or "WPA2PSK".</li> </ul>	
	"OpenSystem" / "SharedKey" / "WPA" / "WPA2" / "WPAPSK" / "WPA2PSK"	

Section name	Parameter	Description
		Valid value
NetworkPrinter- %X%	Encryption- Method	Designates the encryption method.
		<ul style="list-style-type: none"> <li>• If the value for "Authentication Method" is "OpenSystem", designate "None" or "WEP".</li> <li>• If the value for "Authentication Method" is "SharedKey", designate "WEP".</li> <li>• If the value for "Authentication Method" is "WPA", "WPA2", "WPAPSK", "WPA2PSK", designate "TKIP" or "AES".</li> </ul>
		"None" / "WEP" / "TKIP" / "AES"
	DefaultWEPKey	Designates the WEP key in use (1 to 4).
		"WEPKey1" / "WEPKey2" / "WEPKey3" / "WEPKey4"
	WEPKey1 to 4	Designates the WEP key that corresponds to the WEP key number.
		<ul style="list-style-type: none"> <li>• For the pass phrase, designates 5 or 13 alphanumeric characters and symbols (excluding spaces) .</li> <li>• For hexadecimals, use either 10 or 26 alphanumeric characters (0 to 9, a to f, A to F).</li> </ul>
	PresharedKey	Designates the pre-shared key used when using WPAPSK or WPA2PSK.
		<ul style="list-style-type: none"> <li>• For the pass phrase, designate between 8 and 63 alphanumeric characters and symbols (excluding spaces).</li> </ul>
	Password	Designates the password of the TM printer for which the settings are to be edited.
Within 30 alphanumeric characters.		

## *Saving the additional content*

The additional contents vary depending on the environment you are constructing. Save the necessary files for your environment on the USB memory.

### **CAUTION**

- When execute Easy Setup, the existing contents are deleted, and overwritten by additional contents in the USB memory.  
Zip the contents to be saved all together.
- The maximum size of the files before zipping is 100 MB.

# Easy Setup for the TM-DT

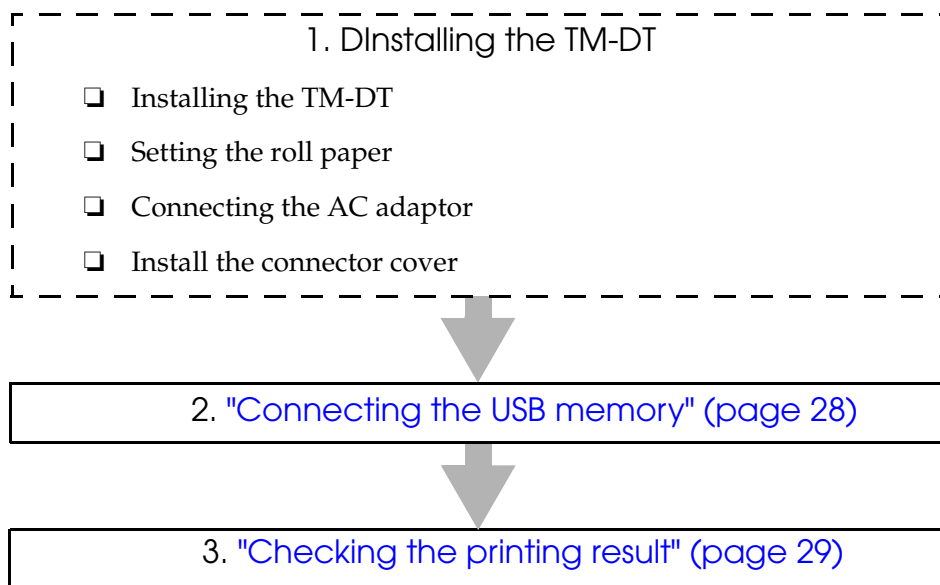
This section explains the method for setting up a TM-DT using the Easy Setup.

## *Flow of the Easy Setup*

**NOTE**

In this set-up flow, items explained in this manual are framed in a solid line, while items where you must refer to the user's manual for each TM-DT are framed in a dotted line.

Install TM-DT using this Easy Setup through the following flow.



## Connecting the USB memory

**CAUTION**

- Remove the wireless LAN module before implementing the Easy Setup.
- Set the roll paper beforehand to print the setting result.
- If Easy Setup is not started, remove the USB memory, wait 30 seconds or more, then re-insert the USB memory.

- 1** Turn on the TM-DT.
- 2** Confirm that the status LED (orange) is off.  
When you turn on the TM-DT, the status LED (orange) blinks, then turns off after a short time. If turning on the printer for the first time, initial settings are executed inside the device, so it will take some time for the status LED (orange) to turn off.
- 3** Connect the USB memory you prepared in Section 2.
- 4** When you connect the USB memory, setting processing is automatically started. The status LED (orange) blinks during setting processing.
- 5** After setting processing is completed, the setting result is printed. Check the printing result.  
Refer to "[Checking the printing result](#)" on page 29.

# Checking the printing result

The following is an example of the printing result.

TM-DT's serial number	<pre>***** EPSON Status Sheet ***** Serial Number: 1234567890</pre>	<Time Server Setting> Use Time Server Enable Time Server time.windows.com	Shutdown settings
Preparation of kitting	<pre>===== Progress Report ===== EasySetup has been started. ----- Error has occurred during parsing setting.ini. Below items are something wrong; [WiredNetwork] SubnetMask Gateway ... EasySetup has been aborted. -----</pre>	<Shutdown> Power Button Enable ePOS-Device Shutdown: Enable Require Password: Enable	
Web service fuction update	<pre>&lt;Web Service Update&gt; SKIPPED [dtPackage.bin]</pre>	<SSL> SSL Enable Domain name in certification aaa.bbb.com Expiration date in certification 2013/01/02 05:06:07 GMT	
Restore settings	<pre>&lt;Restore Settings&gt; SKIPPED</pre>	<Device> local_printer: TM-T88V-DT local_display: DM-D110 local_keyboard: FFFF/FFFF local_scanner: FFFF/FFFF cat01: FFFF/FFFF cat02: FFFF/FFFF mst: custom	
Web content update	<pre>&lt;Web Content Update&gt; SKIPPED</pre>	<Web Content Update> Use Automatic Update Enable Schedule Weekly - Sunday 08:00 File URL http://example.com/webapp.zip Use of proxy Enable Proxy URL and port no. 8080	
Applying new configuration	<pre>&lt;Applying New Configuration&gt; SUCCESS</pre>	<Server Direct Print> Use Server Direct Print Enable ID ABCDEFG URL http://example.com/order.cgi Interval 5	
Child printer's network settings	<pre>&lt;Network Printer Settings&gt; SUCCESS  ===== Setting Result =====  &lt;General Information&gt; Software 2.00 Model TM-T88V-DT Time 2012-10-10 09:00:00 GMT+09:00  &lt;Wired TCP/IP&gt; Get IP Address Manual IP Address 192.168.192.168 Subnetmask 255.255.255.0 Default Gateway 192.168.192.168 Acquire DNS Server Address Automatically Disable DNS Server Address 192.168.192.254 192.168.192.253 192.168.192.252  &lt;Wireless&gt; Network Mode Infrastructure SSID EpsonNet Authentication Method Open System Security Mode None  &lt;Wired TCP/IP&gt; Get IP Address Manual IP Address 192.168.1.168 Subnetmask 255.255.255.0 Default Gateway 192.168.1.1 Acquire DNS Server Address Automatically Disable DNS Server Address -</pre>	<Status Notify> Use Status Notify Enable ID ABCDEFG URL http://example.com/status.cgi Interval 5  <Restore> File URL http://example.com/update.bin restore.dhc Use of proxy Enable Proxy URL and port no. 8080  <Network Printer Settings> NetworkPrinter-1: Success NetworkPrinter-2: Failure : ----- Setting done. 2013/01/02 01:23:45	

## Troubleshooting

If an error occurs, the contents of the error are printed in the printing result. Refer to the solutions below to solve the issue.

Process	Printing result when an error occurs	Solution
During set-up preparation	SYSTEM ERROR: (4) Setting has been aborted.	<ul style="list-style-type: none"> <li>• Confirm access permissions for the file.</li> <li>• Check the available space on the drive.</li> </ul>
	ERROR: The setting.ini contains some incorrect format on below items: <Section name> - (Item name which had the error) Setting has been aborted.	The format of the setting.ini is invalid. Check and revise the corresponding section of setting.ini.
	ERROR: Authentication failed. Setting has been aborted.	Failed to verify the password for EPSON TMNet WebConfig. Revise the password for setting.ini.
	SYSTEM ERROR: (99) Setting has been aborted. Error other than the above	Contact customer support for assistance.
Web Service Update	SKIPPED	Processing was omitted.
	SUCCESS	Processing succeeded.
	SYSTEM ERROR: (11)	Check if the update file is corrupted.
	SYSTEM ERROR: (12)	Check if the update file is corrupted.
	ERROR: File not found.	The designated update file could not be found. Check and revise the contents of AppliedLocalFile in the (WebService Update) section of setting.ini.
	ERROR:The installed software version is lower than the required version of update package.	The current software version for the TM-DT is lower than the version required for the update package you are trying to apply. Check if the update file you are applying is correct.
	ERROR:The installed software version is higher than the required version of update package.	The current software version for the TM-DT is higher than the version required for the update package you are trying to apply. Check if the update file you are applying is correct.
	SYSTEM ERROR: (99)	Contact customer support for assistance.

Process	Printing result when an error occurs	Solution
Restore Settings	SKIPPED	Processing was omitted.
	SUCCESS	Processing succeeded.
	SYSTEM ERROR: (11)	Check if the update file is corrupted.
	ERROR: File not found.	The designated update file could not be found. Check and revise the contents of AppliedLocalFile in the (Restore) section of setting.ini.
	SYSTEM ERROR: (99) Error other than the above	Contact customer support for assistance.
Web Content Update	SKIPPED	Processing was omitted.
	SUCCESS	Processing succeeded.
	SYSTEM ERROR: (11)	Check if the update file is corrupted.
	ERROR: File not found.	The designated update file could not be found. Check and revise the contents of AppliedLocalFile in the (WebContents) of setting.ini.
	SYSTEM ERROR: (99) Error other than the above	Contact customer support for assistance.
Applying New settings	SKIPPED	Processing was omitted.
	SUCCESS	Processing succeeded.
	SYSTEM ERROR: (31)	Check if the setting values (upper/lower case, etc.) in the setting.ini file are correct.
	SYSTEM ERROR: (32)	Check if the setting values (upper/lower case, etc.) in the setting.ini file are correct.
	SYSTEM ERROR: (41)	Check if the password is too long. The password must be no longer than 30 characters. Check if characters that cannot be used are included in the password. Only alphanumeric characters, under scores, periods, and hyphens can be used in the password.
	SYSTEM ERROR: (42)	Check if the setting values (upper/lower case, etc.) in the setting.ini file are correct.
	SYSTEM ERROR: (43)	Check if the setting values (upper/lower case, etc.) in the setting.ini file are correct.
	ERROR: Shutdown settings update failed.	Check if the setting values (upper/lower case, etc.) in the setting.ini file are correct.

Process	Printing result when an error occurs	Solution
Applying New settings	ERROR: Private key file is not found.	The specified private key file is not found. Check and revise the contents of PrivateKeyFile in the (SSL) section of setting.ini.
	ERROR: Certificate file is not found.	The specified certificate file is not found. Check and revise the contents of CertificateFile in the (SSL) section of setting.ini.
	ERROR: Certificate chain file is not found.	The specified certificate chain file is not found. Check and revise the contents of CertificateChainFile in the (SSL) section of setting.ini.
	ERROR: Private key file or certificate file is not matched.	The specified private key file and the certificate file do not match. Check if the correct private key file is specified for the certificate file.
	ERROR: Invalid file was specified for the private key file.	Failed to read the private key file. Check if the private key file is corrupted.
	ERROR: Invalid file was specified for the certificate file.	Failed to read the certificate file. Check if the certificate file is corrupted.
	ERROR: Invalid file was specified for the certificate chain file.	Failed to read the certificate chain file. Check if the certificate chain file is corrupted.
	SYSTEM ERROR: (99) Error other than the above	Contact customer support for assistance.
Network Printer Settings	SUCCESS	Processing succeeded.
	ERROR: Password is not correct.	The password is wrong. Use the correct password.
	ERROR: Connection failed.	Connection with the printer could not be established. Check the printer settings and network status and make sure that the printer is ready for operation.
	ERROR: Device has been locked by another process.	Another process is using (locking) the target printer. Wait until the other process finishes using the printer and try again.
	SYSTEM ERROR: (99) Error other than the above	Contact customer support for assistance.



# Restore the TMNet WebConfig

This section explains the method for using TMNet WebConfig for the Easy Setup.

## *Setting files to save to USB memory*

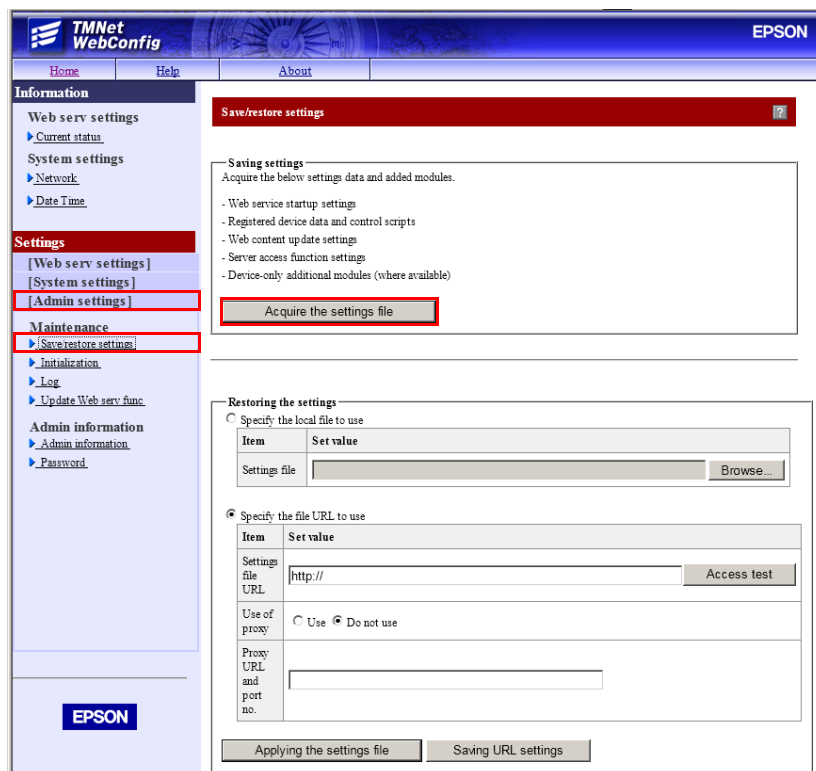
Save the following setting files on the USB memory in order to restore the TMNet WebConfig.

File	Neces- sity	Description
TMNet WebConfig setting file	Required	The UserAppSnapshot.dhc file is created by (Save/restore settings) under (Admin information) in EPSON TMNet WebConfig. Default file name: UserAppSnapshot.dhc Refer to " <a href="#">Creating the Setting file</a> " on page 34.
setting.ini	Required	You must edit the contents of the setting.ini file to match the settings. Refer to " <a href="#">Restore Settings</a> " on page 35.

# Creating the Setting file

The Setting file is created by the TM-DT. Create the file using the following procedure.

- 1 Start the printer to be copied from.
- 2 Connect the USB memory.
- 3 Start EPSON TMNet WebConfig.
- 4 Use EPSON TMNet WebConfig to perform settings for the printer.  
For how to perform settings for the printer, refer to the user's manual for each TM-DT.
- 5 After performing settings, use EPSON TMNet WebConfig to create the Setting file. Select (Admin information), then (Save/restore settings).



- 6 The "Save/restore settings" window is displayed. Click the (Acquire the settings file) button to set the location to save to.

## Editing setting.ini file

The following is an example of specifying a value in a setting.ini file. To restore from a settings file, save the file into the folder that contains the setting.ini file, and specify the name of the settings file in the setting.ini file. Simply doing this will restore the settings from the settings file. Edit the contents to match your settings.

```
[Restore]
AppliedLocalFile = userAppSnapshot_0101.dhc
```

Section name	Parameter	Description
		Valid value
Restore	AppliedLocalFile	Designates the back-up file to be applied.
		Designates the file in the same folder as this file (setting.ini).
		Valid file name with the "dhc" extension.

## Restore Settings

Designate the method for restoring settings by using the same procedure as for normal Easy Setup.

For detail, refer to ["Flow of the Easy Setup" on page 27](#).

