

TM-i Series Easy Setup Guide

Overview

Describes an overview of easy setup.

Preparing the setting file

Describes how to prepare a setting file to save to a USB memory stick.

Easy Setup for the TM-i

Describes how to copy EpsonNet WebConfig settings using TM-i easy setup.

Cautions

- No part of this document may be reproduced, stored in a retrieval system, or transmitted in any form or by any means, electronic, mechanical, photocopying, recording, or otherwise, without the prior written permission of Seiko Epson Corporation.
- The contents of this document are subject to change without notice. Please contact us for the latest information.
- While every precaution has been taken in the preparation of this document, Seiko Epson Corporation assumes no responsibility for errors or omissions.
- Neither is any liability assumed for damages resulting from the use of the information contained herein.
- Neither Seiko Epson Corporation nor its affiliates shall be liable to the purchaser of this product or third parties for damages, losses, costs, or expenses incurred by the purchaser or third parties as a result of: accident, misuse, or abuse of this product or unauthorized modifications, repairs, or alterations to this product, or (excluding the U.S.) failure to strictly comply with Seiko Epson Corporation's operating and maintenance instructions.
- Seiko Epson Corporation shall not be liable against any damages or problems arising from the use of any options or any consumable products other than those designated as Original EPSON Products or EPSON Approved Products by Seiko Epson Corporation.

Trademarks

EPSON and EXCEED YOUR VISION are registered trademarks of Seiko Epson Corporation in Japan and other countries/regions.

Microsoft[®], Windows[®], Excel[®] and Internet Explorer[®] are either registered trademarks or trademarks of Microsoft Corporation in the United States and other countries.

© Seiko Epson Corporation 2013-2014. All rights reserved.

For Safety

Key to Symbols

The symbols in this manual are identified by their level of importance, as defined below. Read the following carefully before handling the product.

CAUTION	Provides information that must be observed to avoid damage to your equipment or a malfunction.
NOTE	Provides important information and useful tips.

Restriction of Use

When this product is used for applications requiring high reliability/safety, such as transportation devices related to aviation, rail, marine, automotive, etc.; disaster prevention devices; various safety devices, etc.; or functional/precision devices, etc., you should use this product only after giving consideration to including fail-safes and redundancies into your design to maintain safety and total system reliability. Because this product was not intended for use in applications requiring extremely high reliability/safety, such as aerospace equipment, main communication equipment, nuclear power control equipment, or medical equipment related to direct medical care, etc., please make your own judgment on this product's suitability after a full evaluation.

About this Manual

Aim of the Manual

This manual presents information that is necessary for using the TM-i series Easy Setup.

The TM-i series in this manual is a generic term for the following printers.

- TM-T88V-i
- TM-T70-i
- TM-T20II-i
- TM-T82II-i
- TM-L90-i

Manual Content

The manual is made up of the following sections:

- Chapter 1 [Overview](#)
- Chapter 2 [Preparing the setting file](#)
- Chapter 3 [Easy Setup for the TM-i](#)

Contents

■ For Safety	3
Key to Symbols	3
■ Restriction of Use	3
■ About this Manual	3
Aim of the Manual	3
Manual Content	3
■ Contents	4

Overview 5

■ What is Easy Setup?	5
Preparation	5
Copy	6
■ Environment	7
TM-i Series	7
USB memory	7
Printers that can be controlled	7

Preparing the setting file 9

■ Setting files to save to USB memory	9
■ Editing the setting.ini file	10
■ Using EasyKittingUtility.xls	31
Operating environment	31
Usage	32
■ Saving web content	35

Easy Setup for the TM-i 37

■ Flow of the Easy Setup	37
■ Connecting the TM printer	38
■ Connecting a USB memory stick, automatic settings	39
■ Checking the printing result	40
Troubleshooting	41

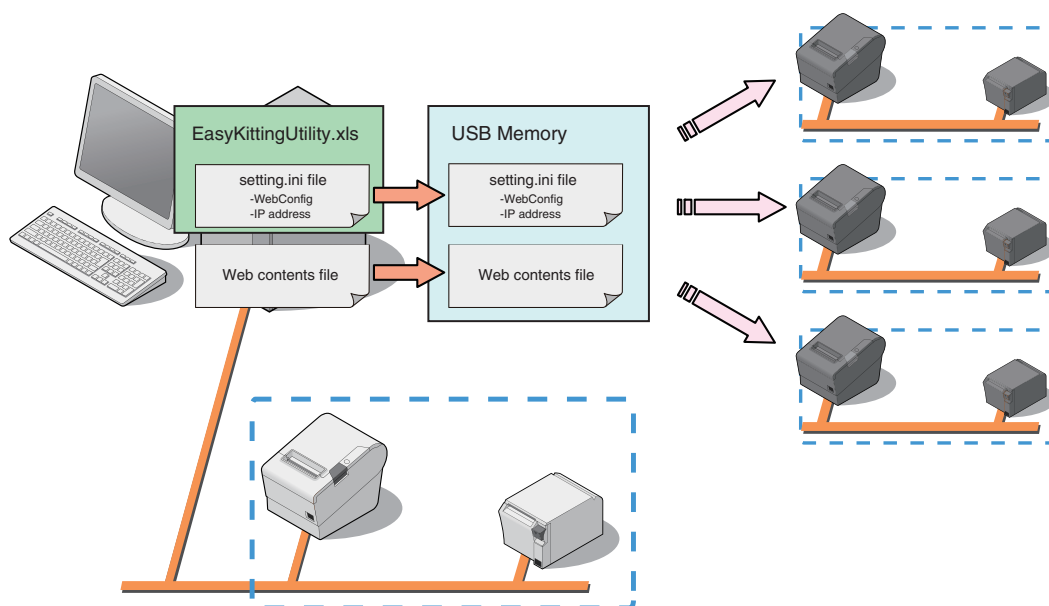
Overview

This section explains the outline for the Easy Setup.

What is Easy Setup?

Easy setup is a function that allows you to set the EPSON TMNet WebConfig by simply inserting a USB memory stick and turning on the power. The USB memory stick should contain a file with the setting values for EPSON TMNet WebConfig and a file with web content.

If you are using a printer that can be controlled (a TM printer connected to a network), you can also perform their network settings at the same time.



NOTE

The settings for DIP switches and memory switches in TM-i and TM printers cannot be copied.

Preparation

- 1** Use the EasyKittingUtility.xls file included with this manual or a text editor to create a setting.ini file.
- 2** If the USB memory stick contains a setting.ini file and web content is registered in TM-i, copy the same web content.

Copy

Perform the following steps at the copy destination.

- 1** Use a microUSB cable to connect a wireless LAN TM printer to TM-i. If you are using a wired LAN printer, connect it to a network. Configure the TM printer to its default network settings.
- 2** Insert the USB memory stick into TM-i, and turn on the power.
- 3** TM-i and the TM printer settings are performed automatically, and the results are printed.

Environment

TM-i Series

TM-i	TM-i firmware			
	Ver.4.00	Ver.3.00	Ver.2.10	Ver.2.00
TM-T88V-i	●	●	●	●
TM-T70-i	●	●	●	●
TM-T20II-i	●	-	-	-
TM-T82II-i	●	-	-	-
TM-L90-i	-	●	●	●

USB memory

- ❑ USB 1.1 or later
- ❑ 256 MB or more
The necessary space varies based on the size of the Web contents file.

Printers that can be controlled

Printers that can be used vary according to the TM-i firmware.

TM printer	TM-i firmware			
	Ver.4.00	Ver.3.00	Ver.2.10	Ver.2.00
TM-T88V	●	●	●	●
TM-T88IV	●	●	●	-
TM-T70	●	●	●	●
TM-T70II	●	-	-	-
TM-T90	●	●	●	●
TM-L90	●	●	●	-
TM-P60II	●	●	-	-
TM-T20	●	●	-	-
TM-T20II	●	-	-	-
TM-T82II	●	-	-	-
TM-P80	●	-	-	-
TM-U220	●	●	-	-



Preparing the setting file

This section explains the method for creating the setting files to save on the USB memory.

Setting files to save to USB memory

Save the following setting files on the USB memory in order to perform Easy Setup for the TM-i.

File	Description
setting.ini	You must edit the contents of the setting.ini file to match the settings. Refer to "Editing the setting.ini file" on page 10 .
Web contents file	These include style sheets registered in Server Direct Print, and web content files used for web server functions.

Editing the setting.ini file

The setting.ini file is written as follows. Edit the contents to match your settings.

CAUTION

- Although it might not be necessary to set a particular item, do not delete that item.
- Refer to general ini files for details about the format of character strings in the setting.ini file.

```
[WiredLinkLayer]
LinkSpeed="AutoNegotiation"

[WiredNetwork]
IPAddressSettingMethod="Manual"
APIPA="Disable"
IPAddress="192.168.192.168"
SubnetMask="255.255.255.0"
Gateway="192.168.192.1"
DNSServerSettingMethod="Manual"
DNSServerIPAddress1=""
DNSServerIPAddress2=""
DNSServerIPAddress3=""
```

Wired LAN settings

```
[WirelessLinkLayer]
NetworkMode="Infrastructure"
SSID="TM-i_p"
AdhocChannel="1"
CommunicationStandard="802.11b/g"
AuthenticationMethod="WPA2PSK"
EncryptionMethod="AES"
DefaultWEPKey="WEPKey1"
WEPKey1=""
WEPKey2=""
WEPKey3=""
WEPKey4=""
PresharedKey="Epsonnet"

[WirelessNetwork]
IPAddressSettingMethod="Manual"
APIPA="Disable"
IPAddress="192.168.5.125"
SubnetMask="255.255.255.0"
Gateway="192.168.5.1"
DNSServerSettingMethod="Manual"
DNSServerIPAddress1=""
DNSServerIPAddress2=""
DNSServerIPAddress3=""
```

Wireless LAN settings

<pre>[WebContents] AutoUpdate="Enable" Frequency="Weekly" Timing="Sunday" UpdateTimeHour="23" UpdateTimeMinute="59" ServerAuthentication="Enable" FileURL="https://w0.server.com/server1/stylesheet.zip" ID="webcontentsid2" Password="webcontentspw2"</pre>	Settings when registering Web contents
<pre>[WebContentsStorage] PHP="Disable" WebContentsStorage="Printer"</pre>	Settings when using the PHP
<pre>[ServerDirectPrint] Use="Enable" ID="sdp1" Password="tmi" ServerAuthentication="Enable" URL="https://w1.server.com/server_directprint.cgi" Interval="15" URL2="https://w2.server.com/server_directprint.cgi" Interval2="30" URL3="https://w3.server.com/server_directprint.cgi" Interval3="30"</pre>	Settings when using the Server Direct Print
<pre>[StatusNotification] Use="Enable" ID="sdp1" Password="tmi" ServerAuthentication="Enable" URL="https://w1.server.com/server_statusmonitor.cgi" Interval="120"</pre>	Settings when using the Status notification function
<pre>[General] Administrator="epson" Location=""</pre>	Administrator information settings
<pre>[Time] TimeZone="0" UseTimeServer="Disable" TimeServerSettingMethod="Manual" TimeServer=""</pre>	Settings when using TimeServer
<pre>[Password] Password="epson" NewPassword="epson"</pre>	TM-i EPSON TMNet WebConfig settings

```
[EasyKitting]
Once="False"
UseEncodeURL="Disable"
```

Easy Setup settings

```
[Printer-1]
DeviceID="local_printer"
Model="TM-T88V-i"
IPAddress=""
RetryInterval="100"
```

Registration of printers that can be controlled by TM-i

```
[Printer-2]
DeviceID="TM-88V"
Model="TM-T88V"
IPAddress="192.168.5.121"
RetryInterval="100"
```

```
[Printer-3]
DeviceID="TM-T88IV"
Model="TM-T88IV"
IPAddress="192.168.5.122"
RetryInterval="100"
```

```
[CustomerDisplay]
Use="Enable"
Baudrate="9600"
Databit="8"
Parity="None"
Brightness="100"
[KeyInputDevice-1]
DeviceID="KeyInputDevice"
DeviceName="Scanner01"
VID="165A"
PID="B001"
ControlScript="Scanner_Generic.js"
[KeyInputDevice-2]
DeviceID="KeyInputDevice2"
DeviceName="Scanner02"
VID="04fc"
PID="1622"
ControlScript="Scanner_Generic.js"
[SerialCommunicationDevice]
Use="Enable"
Baudrate="9600"
Databit="7"
Parity="None"
Stopbit="1"
FlowControl="None"
```

Settings for devices that are controlled via connection to TM-i

<pre>[Proxy] ProxyURL="http://192.168.5.100:8080" ID="proxy" Password="tmi" UseProxyServerDirectPrint="Enable" UseProxyStatusNotification="Enable" UseProxyWebContentsUpdate="Disable"</pre>	Proxy settings
<pre>[Syslog] Storage="Printer"</pre>	Save destination settings for system logs

The setting.ini file is written as follows. Edit the contents to match your settings.

Section name	Parameter	Description	Firmware Ver. 3 or earlier	Firmware Ver. 4 or later
		Valid value		
WiredLinkLayer		Delete this item if you are not using wired LAN.		
	LinkSpeed	Designates the link speed for wired LAN. Normally AutoNegotiation is specified. "10BaseTHalf"/"10BaseTFull"/ "100BaseTHalf"/"100BaseTFull"/ "AutoNegotiation"	●	●
WiredNetwork		Do not delete items where settings are not required.		
	IPAddressSetting Method	Designates the method for setting the IP address. "Auto" / "Manual"	●	●
		Designates the method for setting the IP address. "Enable" / "Disable"	●	●
	IPAddress	Designates the IP address. <ul style="list-style-type: none"> This must be set if the value for IPAddressSettingMethod is "Manual". This is ignored if the value for IPAddressSettingMethod is "Auto". 	●	●
		<ul style="list-style-type: none"> Format of (numerical value 1 to 255).(numerical value 0 to 255).(numerical value 0 to 255).(numerical value 0 to 254) The following address(es) cannot be used. 127.0.0.1 224.0.0.0 to 239.255.255.255 240.0.0.0 to 255.255.255.255 	●	●
SubnetMask	Designates the subnet mask. <ul style="list-style-type: none"> This must be set if the value for IPAddressSettingMethod is "Manual". This is ignored if the value for IPAddressSettingMethod is "Auto". 	●	●	
	<ul style="list-style-type: none"> Format of (numerical value 1 to 255).(numerical value 0 to 255).(numerical value 0 to 255).(numerical value 0 to 254) The following address(es) cannot be used. 0.0.0.0 127.0.0.1 255.255.255.255 255.0.255.0 	●	●	

Section name	Parameter	Description	Firmware Ver. 3 or earlier	Firmware Ver. 4 or later
		Valid value		
	Gateway	Designates the default gateway.	●	●
		<ul style="list-style-type: none"> This is ignored if the value for IPAddressSettingMethod is "Auto". Format of (numerical value 1 to 255).(numerical value 0 to 255).(numerical value 0 to 255).(numerical value 0 to 254) The following address cannot be used. 127.0.0.1 		
	DNSServerSettingMethod	Designates the method for setting the DNS server address. <ul style="list-style-type: none"> If the value for "IPAddressSettingMethod" is "Auto", designate "Auto" or "Manual". If the value for "IPAddressSettingMethod" is "Manual", designate "Manual". 	●	●
	DNSServerAddresses1~3	Designates the IP addresses for the DNS servers.	●	●
		"1~3" indicates the order of use for the DNS servers. They are used in ascending order, starting with 1. <ul style="list-style-type: none"> If the value for "DNSServerSettingMethod" is "Manual", "DNSServerAddress1~3" must be designated. This is ignored if the value for "DNSServerSettingMethod" is "Auto". Format of (numerical value 1 to 255).(numerical value 0 to 255).(numerical value 0 to 255).(numerical value 0 to 254) The following address(es) cannot be used. 127.0.0.1 224.0.0.0 to 239.255.255.255 240.0.0.0 to 255.255.255.255 If nothing is entered, "0" can be used. 		

Section name	Parameter	Description	Firmware Ver. 3 or earlier	Firmware Ver. 4 or later
		Valid value		
WirelessLinkLayer		Do not delete items where settings are not required.		
	NetworkMode	Designates the operation mode for wireless LAN.	●	●
		"Adhoc" / "Infrastructure"		
	SSID	Designates the SSID.	●	●
		Between 1 and 32 alphanumeric characters and symbols and spaces		
	AdhocChannel	Designates the adhoc channel used when the wireless LAN operation mode is "Adhoc".	●	●
		<ul style="list-style-type: none"> If "Infrastructure" is used for the wireless LAN operation mode designates "1". "1" to "11"		
	CommunicationStandard	Designates a communication standard for wireless LAN.	●	●
		"802.11b/g" / "802.11b/g/n"		
	Authentication Method	Designates the authentication method.	●	●
<ul style="list-style-type: none"> If the value for "NetworkMode" is "Adhoc", designate "OpenSystem" or "SharedKey". If the value for "NetworkMode" is "Infrastructure", designate "OpenSystem", "SharedKey", "WPAPSK", or "WPA2PSK". "OpenSystem" / "SharedKey" / "WPAPSK" / "WPA2PSK"				
EncryptionMethod	Designates the encryption method.	●	●	
	<ul style="list-style-type: none"> If the value for "Authentication Method" is "OpenSystem", designate "None" or "WEP". If the value for "Authentication Method" is "SharedKey", designate "WEP". If the value for "Authentication Method" is "WPAPSK", designate "TKIP" or "AES". If the value for "Authentication Method" is "WPA2PSK", designate "AES". "None" / "WEP" / "TKIP" / "AES"			
DefaultWEPKey	Designates the WEP key in use (1 to 4).	●	●	
	"WEPKey1" / "WEPKey2" / "WEPKey3" / "WEPKey4"			

Section name	Parameter	Description	Firmware Ver. 3 or earlier	Firmware Ver. 4 or later
		Valid value		
	WEPKey1 to 4	Designates the WEP key that corresponds to the WEP key number. <ul style="list-style-type: none"> For the pass phrase, use 5 or 13 alphanumeric characters and symbols or spaces. For hexadecimal, use either 10 or 26 alphanumeric characters (0 to 9, a to f, A to F). 	●	●
	PresharedKey	Designates the pre-shared key used when using WPAPSK or WPA2PSK. <ul style="list-style-type: none"> For the pass phrase, use between 8 and 63 alphanumeric characters and symbols or spaces. For hexadecimal, use 64 alphanumeric characters (0 to 9, a to f, A to F). 	●	●
WirelessNetwork	Do not delete items where settings are not required.			
	IPAddressSetting Method	Designates the method for setting the IP address.	●	●
		"Auto" / "Manual"		
	APIPA	Designates whether to enable / disable the APIPA.	●	●
		"Enable" / "Disable"		
	IPAddress	Designates the IP address. <ul style="list-style-type: none"> This must be set if the value for IPAddressSettingMethod is "Manual". This is ignored if the value for IPAddressSettingMethod is "Auto". Format of (numerical value 1 to 255).(numerical value 0 to 255).(numerical value 0 to 255).(numerical value 0 to 254) The following address(es) cannot be used. 127.0.0.1 224.0.0.0 to 239.255.255.255 240.0.0.0 to 255.255.255.255 	●	●

Section name	Parameter	Description	Firmware Ver. 3 or earlier	Firmware Ver. 4 or later
		Valid value		
	SubnetMask	<p>Designates the subnet mask.</p> <ul style="list-style-type: none"> This must be set if the value for IPAddressSettingMethod is "Manual". This is ignored if the value for IPAddressSettingMethod is "Auto". 		
		<ul style="list-style-type: none"> Format of (numerical value 1 to 255).(numerical value 0 to 255).(numerical value 0 to 255).(numerical value 0 to 254) The following address(es) cannot be used. 0.0.0.0 127.0.0.1 255.255.255.255 255.0.255.0 	●	●
	Gateway	<p>Designates the default gateway.</p> <ul style="list-style-type: none"> This is ignored if the value for IPAddressSettingMethod is "Auto". 		
		<ul style="list-style-type: none"> Format of (numerical value 0 to 255).(numerical value 0 to 255).(numerical value 0 to 255).(numerical value 0 to 254) The following address cannot be used. 127.0.0.1 	●	●
	DNSServerSettingMethod	<p>Designates the method for setting the DNS server address.</p>	●	●
		"Auto" / "Manual"		
	DNSServerAddress 1 to 3	<p>Designates the IP addresses for the DNS servers.</p> <p>"1 to 3" indicates the order of use for the DNS servers. They are used in ascending order, starting with 1.</p> <ul style="list-style-type: none"> If the value for "DNSServerSettingMethod" is "Manual", "DNSServerAddress1 to 3" must be designated. If the value for "DNSServerSettingMethod" is "Auto", this is ignored. 	●	●
		<ul style="list-style-type: none"> Format of (numerical value 1 to 255).(numerical value 0 to 255).(numerical value 0 to 255).(numerical value 0 to 254) The following address(es) cannot be used. 127.0.0.1 224.0.0.0 to 239.255.255.255 240.0.0.0 to 255.255.255.255 If nothing is entered, "0" can be used. 		

Section name	Parameter	Description	Firmware Ver. 3 or earlier	Firmware Ver. 4 or later
		Valid value		
WebContents	Do not delete items where settings are not required.			
	AutoUpdate	Designates whether to enable / disable automatic updates for Web contents.	●	●
		"Enable" / "Disable"		
	Frequency	Designates the frequency for automatic updates.	●	●
		"Hour" / "Daily" / "Weekly" / "Monthly"		
	Timing	Designates the timing for automatic updates. <ul style="list-style-type: none"> This must be set if the value for "Frequency" is "Hour", "Weekly", or "Monthly". This is ignored if the value for "Frequency" is "Daily". 	●	●
		<ul style="list-style-type: none"> If the value for "Frequency" is "Hour", designate an Integer from 1 to 23. If the value for "Frequency" is "Weekly", select "Sunday", "Monday", "Tuesday", "Wednesday", "Thursday", "Friday", or "Saturday". If the value for "Frequency" is "Monthly", designate an integer from 1 to 31. 		
	UpdateTimeHour	Designates the "hour" for the updates. <ul style="list-style-type: none"> This must be set if the value for "Frequency" is "Daily", "Weekly", or "Monthly". This is ignored if the value for "Frequency" is "Hour". 	●	●
		Integer from 0 to 23		
	UpdateTimeMinute	Designates the "minute" for the updates. <ul style="list-style-type: none"> This must be set if the value for "Frequency" is "Daily", "Weekly", or "Monthly". This is ignored if the value for "Frequency" is "Hour". 	●	●
Integer from 0 to 59				
ServerAuthentication	Use certificates imported into TM-i to enable/disable server authentication. If a parameter cannot be found, the current settings are retained.	●	●	
	"Enable" / "Disable"			

Section name	Parameter	Description	Firmware Ver. 3 or earlier	Firmware Ver. 4 or later
		Valid value		
	FileURL	Designates the URL to obtain Web contents from.	●	●
		Alphanumeric characters <ul style="list-style-type: none"> The protocol is in http or https format. The expansion is zip. 		
	UseProxy	Designates whether to use a proxy server or not. <ul style="list-style-type: none"> If "UseProxyWebContentsUpdate" in the "Proxy" section is specified, it is ignored. This is ignored if "FileURL" is not designated. 	●	●
		"Enable" / "Disable"		
	ProxyURL	Designates the URL of the proxy server. <ul style="list-style-type: none"> If "ProxyURL" in the "Proxy" section is specified, it is ignored. If the value for "UseProxy" is "Enable", this must be set. This is ignored if "FileURL" is not designated. 	●	●
		Within 255 alphanumeric characters. <ul style="list-style-type: none"> The protocol is in http or https format. 		
	ID	Designates the ID to be used when uploading web content.	●	●
		Within 30 alphanumeric characters (only underscores, periods, and hyphens) Null characters can also be designated.		
	Password	Designates the password to be used when uploading web content.	●	●
		Within 30 alphanumeric characters (only underscores, periods, and hyphens) Null characters can also be designated.		
	AppliedLocalFile	This is the zip file for the Web contents to be decompressed. <ul style="list-style-type: none"> Designates the file in the same folder as this file (setting.ini). This item is user-definable. If you are not using web content, delete this item. 	●	●
		Valid file name with the "zip" extension (alphanumeric characters/ exclamation mark/ comma/ period/ hyphen/ at sign/ underscore/ tilde)		

Section name	Parameter	Description	Firmware Ver. 3 or earlier	Firmware Ver. 4 or later
		Valid value		
WebContentsStorage	Do not delete items where settings are not required.			
	PHP	Designates whether to enable / disable the PHP function. <ul style="list-style-type: none"> If "Enable" is designated, a microSD card must be inserted before performing EasySetup for TM-i. 	●	●
		"Enable" / "Disable"		
	WebContentsStorage	Designates the save destination for web content. <ul style="list-style-type: none"> Designates "microSD" if "PHP" is set to "Enable". Designates "Printer" if "PHP" is set to "Disable". 	●	●
"microSD" / "Printer"				
ServerDirectPrint	Do not delete items where settings are not required.			
	Use	Designates whether to enable / disable the Server Direct Print function.	●	●
		"Enable" / "Disable"		
	ID	Designates the ID to be used when sending print data requests to the server. <ul style="list-style-type: none"> This must be set if the value for "Use" is "Enable". 	●	●
		Within 30 alphanumeric characters (only underscores, periods, and hyphens) Null characters can also be designated.		
	Password	Designates the password to be used when sending print data requests to the server. <ul style="list-style-type: none"> This must be set if the value for "Use" is "Enable". 	●	●
		Within 30 alphanumeric characters (only underscores, periods, and hyphens) Null characters can also be designated.		
	ServerAuthentication	Use certificates imported into TM-i to enable/disable server authentication. If a parameter cannot be found, the current settings are retained.	●	●
"Enable" / "Disable"				

Section name	Parameter	Description	Firmware Ver. 3 or earlier	Firmware Ver. 4 or later
		Valid value		
	URL	Designates the print data request destination URL. <ul style="list-style-type: none"> If the value for "Use" is "Enable", "URL", "URL1", "URL2", or "URL3" is required. 	●	●
		Within 255 alphanumeric characters.		
	Interval	Designates the standby time from the complete acquisition of print data until the next acquisition process. <ul style="list-style-type: none"> Required if "URL" is specified. 	●	●
		Integer from 1 to 86,400.		
	URL1 to 3	Designates the print data request destination URL. <ul style="list-style-type: none"> If the value for "Use" is "Enable", "URL", "URL1", "URL2", or "URL3" is required. 	-	●
		Within 255 alphanumeric characters.		
	Interval1 to 3	Designates the standby time from the complete acquisition of print data until the next acquisition process. <ul style="list-style-type: none"> Required if "URL1 - 3" are specified. 	-	●
		Integer from 1 to 86,400.		
StatusNotification		Do not delete items where settings are not required.		
	Use	Designates whether to enable / disable the Status notification function.	●	●
		"Enable" / "Disable"		
	ID	Designates the ID used when notifying the server of the status. <ul style="list-style-type: none"> This must be set if the value for "Use" is "Enable". 	●	●
		Within 30 alphanumeric characters (only underscores, periods, and hyphens) Null characters can also be designated.		
	Password	Designates the password used when notifying the server of the status. <ul style="list-style-type: none"> This must be set if the value for "Use" is "Enable". 	●	●
		Within 30 alphanumeric characters (only underscores, periods, and hyphens) Null characters can also be designated.		
	ServerAuthentication	Use certificates imported into TM-i to enable/disable server authentication. If a parameter cannot be found, the current settings are retained.	●	●
		"Enable" / "Disable"		

Section name	Parameter	Description	Firmware Ver. 3 or earlier	Firmware Ver. 4 or later
		Valid value		
	URL	Designates the URL to send the status notification to. • This must be set if the value for "Use" is "Enable".	●	●
		Within 255 alphanumeric characters. • The protocol is in http or https format.		
	Interval	Designates the wait period from when a status is notified to the next notification operation. • This must be set if the value for "Use" is "Enable".	●	●
		Integer from 1 to 86,400.		
General				
	Administrator	Designates the administrator name displayed on the EPSON TMNet WebConfig (Admin information) page.	●	●
		Within 255 alphanumeric characters.		
	Location	Designates the installation location displayed on the EPSON TMNet WebConfig (Admin information) page.	●	●
		Within 255 alphanumeric characters.		
Time		Do not delete items where settings are not required.		
	Year	Designates the "year" for the time when the TM-i is set. Not required if the time is not changed.	●	●
		Integer from 2011 to 2036		
	Month	Designates the "month" for the time when the TM-i is set. Not required if the time is not changed.	●	●
		Integer from 1 to 12		
	Day	Designates the "day" for the time when the TM-i is set. Not required if the time is not changed.	●	●
		Integer from 1 to 31		
	Hour	Designates the "hour" for the time when the TM-i is set. Not required if the time is not changed.	●	●
		Integer from 0 to 23		
	Minute	Designates the "minute" for the time when the TM-i is set. Not required if the time is not changed.		
		Integer from 0 to 59		
	Timezone	Designates the timezone.	●	●
		Integer from -12 to 14		

Section name	Parameter	Description	Firmware Ver. 3 or earlier	Firmware Ver. 4 or later
		Valid value		
	UseTimeServer	Designates whether to perform synchronization with TimeServer or not. "Enable" / "Disable"	●	●
	TimeServerSettingMethod	Designates the timer server setting method. <ul style="list-style-type: none"> If the value for "UseTimeServer" is "Enable", this must be set. If the value for "UseTimeServer" is "Disable", this is ignored. "Auto" / "Manual"	●	●
	TimeServer	Designates the TimeServer. <ul style="list-style-type: none"> Required when "UseTimeServer" is set to "Enable" and "TimerServerSettingMethod" is set to "Manual". Ignored when "UseTimeServer" is set to "Disable" and "TimerServerSettingMethod" is set to "Auto". No more than 254 alphanumeric characters and symbols (including periods)	●	●
Password				
	NewPassword	Designates the password set in EPSON TMNet WebConfig for the TM-i to be copied. Within 20 alphanumeric characters.	●	●
		Designates the password set in EPSON TMNet WebConfig for the TM-i to be copied. Within 20 alphanumeric characters.	●	●
EasyKitting				
	Once	Designates whether to rename the setting.ini file to setting.ini.done after Easy Setup is complete. If "True" is designated, the setting.ini file is renamed to setting.ini.done. This prevents a setting.ini file that has completed Easy Setup from being used in Easy Setup again.	●	●
		<ul style="list-style-type: none"> "True": After Easy Setup is complete, the setting.ini file is renamed to setting.ini.done. "False": After Easy Setup is complete, the setting.ini file is not renamed to setting.ini.done. 		

Section name	Parameter	Description	Firmware Ver. 3 or earlier	Firmware Ver. 4 or later
		Valid value		
	UseEncodeURL	<p>Designates whether to enable/disable URL encoding for the URL specified in the setting.ini file. Select "Enable" for TM-i firmware Ver. 3.xx or earlier and use URL encoded character strings for the following symbols.</p> <ul style="list-style-type: none"> • " (Double quotation mark): %22 • % (Percent): %25 • & (Ampersand): %26 • + (Plus sign): %2B • ; (Semicolon): %3B • \ (Reverse slant): %5C <p>"Enable" / "Disable"</p>	●	●
Printer-%X%		<ul style="list-style-type: none"> • Registration information for TM printers used for ePOS-Print API, ePOS-Print XML, and direct server printing. • Enter an integer of 1 or greater for %X%. (Example: Printer-1) Multiple printers can be registered at once by duplicating sections in which the %X% of this section was changed. • Setting information for this printer is required. Setting information for additional printers is optional. • For this printer's settings, you can designate "" for the IPAdress parameter and change only the device ID. 		
	DeviceID	<p>Designates the device ID of the printer.</p> <p>1 to 30 alphanumeric characters/underscores/periods/hyphens</p>	●	●
	Model	<p>Designates the model of the TM printer.</p> <p>For more information about printers that can be designated, see "Environment" on page 7.</p>	●	●

Section name	Parameter	Description	Firmware Ver. 3 or earlier	Firmware Ver. 4 or later
		Valid value		
	IPAddress	Designates the IP address.	●	●
		<ul style="list-style-type: none"> To change the device ID for this printer, designate "" (empty string). To register a TM printer, designate the IP address of the TM printer. 		
	<ul style="list-style-type: none"> Format of (numerical value 0 to 255).(numerical value 0 to 255).(numerical value 0 to 255).(numerical value 0 to 254) The following address(es) cannot be used. 127.0.0.1 224.0.0.0 to 239.255.255.255 240.0.0.0 to 255.255.255.255 			
	RetryInterval	The communication retry interval is designated in units of milliseconds.	●	●
		This setting is ignored for this printer.		
		Integer between 100 and 60,000		
NetworkPrinter-%X%		<ul style="list-style-type: none"> Register in the TM-i the information for the TM printer to use for ePOS-Print API, ePOS-Print XML, and direct server printing. Enter an integer of 1 or greater for %X%. (Example: NetworkPrinter-1) Multiple printers can be registered at once by duplicating sections in which the %X% of this section was changed. To add this section to the setting.ini file, be sure to perform kitting with the TM printer connected. To set wireless LAN, set all related parameters. 		
	HostName	Designate null characters.	●	●
		""		
	MACAddress	Designates the MACAddress for the TM printer whose settings will be changed. Check the status sheet of the TM printer for the MAC address.	●	●
		Use the following format. (00~FF):(00~FF):(00~FF):(00~FF):(00~FF):(00~FF)		
	IPAddressSettingMethod	Designates the method for setting the IP address.	●	●
		"Auto" / "Manual"		
	APIPA	Designates whether to enable / disable the APIPA.	●	●
		"Enable" / "Disable"		

Section name	Parameter	Description	Firmware Ver. 3 or earlier	Firmware Ver. 4 or later
		Valid value		
	IPAddress	Designates the IP address.		
		<ul style="list-style-type: none"> If the value for "IPAddressSetting-Method" is "Manual", this must be set. If the value for "IPAddressSetting-Method" is "Auto", this is ignored. 		
	<ul style="list-style-type: none"> Format of (numerical value 1 to 255).(numerical value 0 to 255).(numerical value 0 to 255).(numerical value 0 to 254) The following address(es) cannot be used. 127.0.0.1 224.0.0.0 to 239.255.255.255 240.0.0.0 to 255.255.255.255 	●	●	
	SubnetMask	Designates the subnet mask.		
		<ul style="list-style-type: none"> If the value for "IPAddressSetting-Method" is "Manual", this must be set. If the value for "IPAddressSetting-Method" is "Auto", this is ignored. 		
		<ul style="list-style-type: none"> Format of (numerical value 0 to 255).(numerical value 0 to 255).(numerical value 0 to 255).(numerical value 0 to 255) The following address(es) cannot be used. 0.0.0.0 127.0.0.1 255.255.255.255 255.0.255.0 	●	●
	Gateway	Designates the default gateway.		
		<ul style="list-style-type: none"> This is ignored if the value for IPAddressSettingMethod is "Auto". 		
		<ul style="list-style-type: none"> Format of (numerical value 0 to 255).(numerical value 0 to 255).(numerical value 0 to 255).(numerical value 0 to 255) The following address(es) cannot be used. 127.0.0.1 	●	●
	NetworkMode	Designates the operation mode for wireless LAN.		
		"Adhoc" / "Infrastructure"	●	●
	SSID	Designates the SSID.		
		1 to 32 alphanumeric characters and symbols and spaces	●	●

Section name	Parameter	Description	Firmware Ver. 3 or earlier	Firmware Ver. 4 or later
		Valid value		
	AdhocChannel	Designates the adhoc channel used when the wireless LAN operation mode is "Adhoc". If "Infrastructure" is used for the wireless LAN operation mode designates "1". "1" to "11"	●	●
	CommunicationStandard	Designates the communication standard for wireless LAN. "802.11b" / "802.11b/g/n" / "802.11b/g/n"	●	●
	Authentication-Method	Designates the authentication method. <ul style="list-style-type: none"> If the value for "NetworkMode" is "Adhoc", designate "OpenSystem" or "SharedKey". If the value for "NetworkMode" is "Infrastructure", designate "OpenSystem", "SharedKey", or "WPAPSK". (Designates "WPAPSK" when using WPA2PSK.) "OpenSystem" / "SharedKey" / "WPAPSK"	●	●
	Encryption-Method	Designates the encryption method. <ul style="list-style-type: none"> If the value for "Authentication Method" is "OpenSystem", designate "None" or "WEP". If the value for "Authentication Method" is "SharedKey", designate "WEP". If the value for "Authentication Method" is "WPAPSK", designate "TKIP" or "AES". "None" / "WEP" / "TKIP" / "AES"	●	●
	DefaultWEPKey	Designates the WEP key in use (1 to 4). "WEPKey1" / "WEPKey2" / "WEPKey3" / "WEPKey4"	●	●
	WEPKey1 to 4	Designates the WEP key that corresponds to the WEP key number. <ul style="list-style-type: none"> For the pass phrase, use 5 or 13 alphanumeric characters and symbols or spaces. For hexadecimal, use either 10 or 26 alphanumeric characters (0 to 9, a to f, A to F). 	●	●
	PresharedKey	Designates the pre-shared key used when using WPAPSK or WPA2PSK. <ul style="list-style-type: none"> For the pass phrase, designate between 8 and 63 alphanumeric characters and symbols or spaces. 	●	●

Section name	Parameter	Description	Firmware Ver. 3 or earlier	Firmware Ver. 4 or later
		Valid value		
	Password	If a password has been set for the target printer, designates the password. Within 20 alphanumeric characters	●	●
CustomerDisplay		This section is enabled only for devices that have a serial port.		
	Use	Designates whether to enable/disable the use of customer displays for local connections. "Enable" / "Disable"	-	●
	Baudrate	Designates the communication speed. "2400" / "4800" / "9600" / "19200" / "38400" "57600" / "115200"	-	●
	Databit	Designates the bit length. "7" / "8"	-	●
	Parity	Designates the parity. "None" / "Odd" / "Even"	-	●
	Brightness	Designates the brightness. "100" / "60" / "40" / "20"	-	●
KeyInputDevice-%X%		Enter an integer of 1 or greater for %X%. (Example: KeyInputDevice--1) You can change the %X% and then copy this section, to register multiple devices in one step.		
	DeviceID	Designates the device ID. Within 30 alphanumeric characters	-	●
	DeviceName	Designates the device name. Within 64 alphanumeric characters	-	●
	VID	Designates the vender ID. 4 hexadecimal digits	-	●
	PID	Designates the ProductID. 4 hexadecimal digits	-	●
	ControlScript	Designates the name of the script file required to use the device. Within 255 alphanumeric characters	-	●
SerialCommunicationDevice		This section is enabled only for devices that have a serial port.		
	Use	Designates whether serial communication is enabled/disabled. "Enable" / "Disable"	-	●
	Baudrate	Designates the communication speed. "2400" / "4800" / "9600" / "19200" / "38400" "57600" / "115200"	-	●

Section name	Parameter	Description	Firmware Ver. 3 or earlier	Firmware Ver. 4 or later
		Valid value		
	Databit	Designates the bit length.	-	●
		"7" / "8"		
	Parity	Designates the parity.	-	●
		"None" / "Odd" / "Even" / "Mark" / "Space"		
	Stopbit	Designates the stop bit.	-	●
		"1" / "1.5" / "2"		
FlowControl	Designates the flow control.	-	●	
	"None" / "Hardware" / "XOnXOff"			
Proxy				
	ProxyURL	Designates the proxy URL.	-	●
		Within 255 alphanumeric characters		
	UseProxyServer DirectPrint	Designates whether proxy use is enabled/disabled for Server Direct Print.	-	●
		"Enable" / "Disable"		
	UseProxyStatusNotification	Designates whether proxy use is enabled/disabled for status notification.	-	●
		"Enable" / "Disable"		
	UseProxyWebContentsUpdate	Designates whether proxy use is enabled/disabled for web content updates.	-	●
		"Enable" / "Disable"		
	ID	Designates the ID to be used for proxy authentication.	-	●
		Within 30 alphanumeric characters (only underscores, periods, and hyphens) Null characters can also be designated.		
	Password	Designates the password to be used for proxy authentication.	-	●
		Within 30 alphanumeric characters (only underscores, periods, and hyphens) Null characters can also be designated.		
Syslog				
	Storage	Designates the preparation destination for syslog. <ul style="list-style-type: none"> If "Printer" is specified, syslog is saved in the printer's RAM. Therefore, if the printer's power is turned off the log is lost. If "microSD" is specified, syslog is saved in a syslog directory created on the microSD card. The log is not lost even if the printer's power is turned off. 	●	●
		"Printer" / "microSD"		

Using EasyKittingUtility.xls

This section explains how to use the utility (EasyKittingUtility.xls) for creating and editing setting.ini files.

"EasyKittingUtility.xls" has a function for reading and writing "setting.ini" files. It can be used to create, read, and edit "setting.ini" files.

Operating environment

OS

- Microsoft Windows 7 SP1(32 / 64 bit)
- Microsoft Windows Vista SP2(32 / 64 bit)
- Microsoft Windows XP SP3(32 bit)

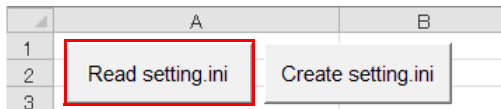
Application

- Microsoft Excel 2003 or later
- Internet Explorer 7 or later

Usage

Use the following procedure.

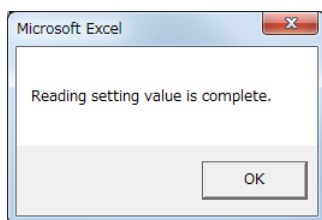
- 1 Open the "EasyKittingUtility.xls" file included with this manual in Microsoft Excel.
- 2 Click the (Read setting.ini) button.



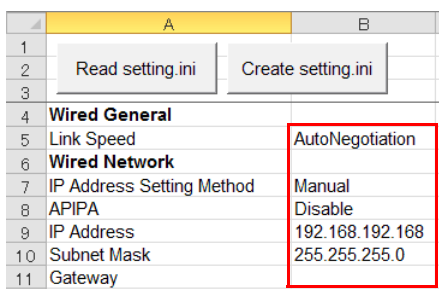
- 3 The (Open) window is displayed. Select "setting.ini", and then click the (Open) button.

The content of the "setting.ini" file is shown in "EasyKittingUtility.xls".

- 4 If the file is read successfully, the following window will be displayed. Click the (OK) button.



- 5 Edit each cell according to the setting content.
For more information about the editing method, see ["Editing setting values" on page 33](#).

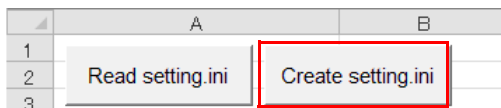


A screenshot of a Microsoft Excel spreadsheet showing network settings. The spreadsheet has columns labeled 'A' and 'B' and rows numbered 1 through 11. The 'Read setting.ini' button is still visible in row 2, column A. The data in the spreadsheet is as follows:

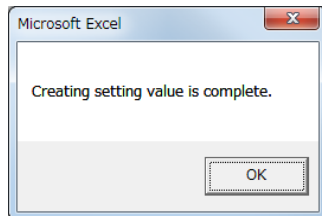
	A	B
1		
2	Read setting.ini	Create setting.ini
3		
4	Wired General	
5	Link Speed	AutoNegotiation
6	Wired Network	
7	IP Address Setting Method	Manual
8	APIPA	Disable
9	IP Address	192.168.192.168
10	Subnet Mask	255.255.255.0
11	Gateway	

The cell containing 'AutoNegotiation' in row 5, column B is highlighted with a red rectangular box.

- 6 After editing is complete, click the (Create setting.ini) button.



- 7 The (Save As) window is displayed. Select the save destination for the "setting.ini" file and then click the (Save) button.
- 8 If the "setting.ini" file is saved successfully, the following window is displayed. Click the (OK) button.

**NOTE**

Exported "setting.ini" files can be read and edited again by clicking the [Read setting.ini] button .

Editing setting values

Entering setting values

Use the following procedure to enter setting values.

- Directly entering values in cells

	A	B
1		
2	Read setting.ini	Create setting.ini
3		
4	Wired General	
5	Link Speed	AutoNegotiation
6	Wired Network	
7	IP Address Setting Method	Manual
8	APIPA	Disable
9	IP Address	192.168.192.168
10	Subnet Mask	255.255.255.0

- Selecting from a list

	A	B
1		
2	Read setting.ini	Create setting.ini
3		
4	Wired General	
5	Link Speed	AutoNegotiation
6	Wired Network	
7	IP Address Setting Method	10BaseTFull
8	APIPA	100BaseTHalf
9	IP Address	192.168.192.168

NOTE

When using a printer that can be controlled, enter the setting values for the number of printers to be registered under [Printer] and [Network-Printer].

* When registering no printers

	A	B
1		
2	Read setting.ini	Create setting.ini
3		
81	Printer	
82	Device ID	local_printer
83	Model	
84	IP Address	
85	Retry Interval	
86	NetworkPrinter	
87	Network Interface	
88	MACAddress	
89	Password	

* Registering a single wired LAN printer

	A	B	C
1			EasyKittingUtility Ver.
2	Read setting.ini	Create setting.ini	
3			
81	Printer		
82	Device ID	local_printer	floor_printer
83	Model		TM-T88V
84	IP Address		192.168.192.10
85	Retry Interval		100
86	NetworkPrinter		
87	Network Interface	Wired	
88	MACAddress	01:23:45:67:89:AB	
89	Password		

* Registering one wired LAN printer and one wireless LAN printer

	A	B	C	D
1			EasyKittingUtility Ver.1.00	
2	Read setting.ini	Create setting.ini		
3				
81	Printer			
82	Device ID	local_printer	floor_printer	kitchen_printer
83	Model		TM-T88V	TM-T70
84	IP Address		192.168.192.10	192.168.192.20
85	Retry Interval		100	100
86	NetworkPrinter			
87	Network Interface	Wired	Wireless	
88	MACAddress	01:23:45:67:89:AB	01:23:45:67:89:AB	
89	Password			

Input items for Printer cells

Be sure to designate a printer that designates this printer in the Printer cell.

If the TM-i is designated, indicate only the Device ID and leave all other items empty.

	A	B
1		
2	Read setting.ini	Create setting.ini
3		
81	Printer	
82	Device ID	local_printer
83	Model	
84	IP Address	
85	Retry Interval	

Input items for disabled settings

Items with grayed out setting values are disabled.

96	AdhocChannel		
97	CommunicationStandard	802.11b/g	802.11b/g
98	AuthenticationMethod	OpenSystem	OpenSystem
99	EncryptionMethod	None	None
100	DefaultWEPKey	WEPKey1	WEPKey1

Saving web content

Web content files vary according to the environment in which they are built. Save the files required for the environment you are using on a USB memory stick.



Easy Setup for the TM-i

This section explains how to use TM-i easy setup to copy EpsonNet WebConfig settings.

Flow of the Easy Setup

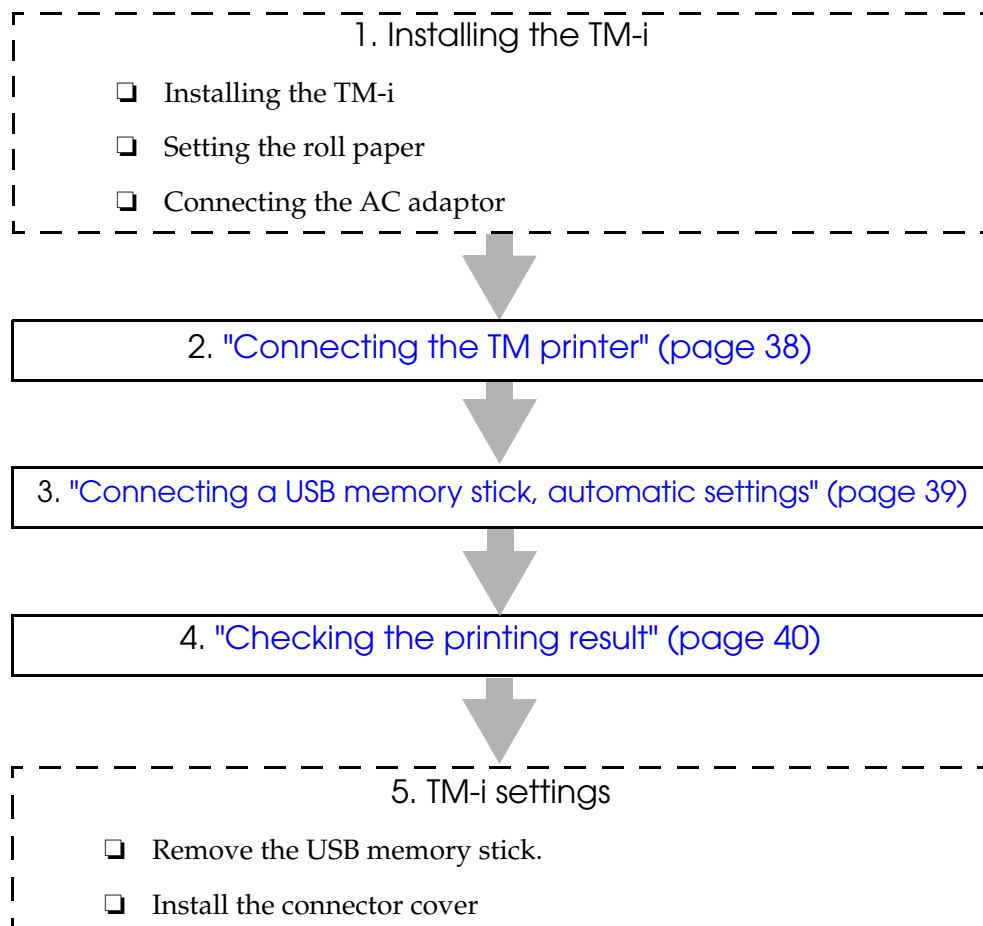
CAUTION

- While performing an easy setup, you cannot install the LAN cable wireless set (OT-WL01). Install the LAN cable wireless set (OT-WL01) after easy setup is complete.
- Set the roll paper beforehand to print the setting result.

NOTE

In this set-up flow, items explained in this manual are framed in a solid line, while items where you must refer to the user's manual for each TM-i are framed in a dotted line.

Install TM-i using this Easy Setup through the following flow.



Connecting the TM printer

Perform the following steps when using a TM printer.

- 1 Connect the TM printer that can be controlled to the TM-i, set the roll paper in the TM printer, and then turn the power on.

Printer that can be controlled	Connection method
Wired LAN printer	Connect TM-i and the TM printer to a network.
Wireless LAN printer	Use a USB cable to connect the printer to the TM-i. Check the USB port on the back of the TM printer to see what type of USB cable can be used.

- 2 To reset to factory settings, press and hold the switch on the back of a printer that can be controlled for more than 10 seconds.

Connecting a USB memory stick, automatic settings

- 1** Insert the USB memory stick into a USB port on the rear panel of TM-i.
- 2** Turn on the TM-i power. The settings are started automatically.
- 3** After setting processing is completed, the setting result is printed. Check the printing result.
Refer to "[Checking the printing result](#)" on page 40.
- 4** If you are using a TM printer, print out a TM printer status sheet.
Check if the TM printer settings (IP address, SSID, etc.) were changed successfully.

Checking the printing result

The following is an example of the printing result.

```
Setting Success!

*****
EPSON Status Sheet
*****

<General Information>
Firmware
  X.XXWW rXXXX.X
ePOS-Device
  x.xx
Model
  TM-T88V-i
Time
  11-May-2014 12:00:00
  GMT+09:00
Administrator Name
  Tom
Location/Person
  Counter001

<Wired>
MAC Address
  **:**:**:**:**:**
Link Speed & Duplex
  Auto Negotiate

<Wired TCP/IP>
Get IP Address
  Manual
Set using Automatic Private IP Addressing
(APIPA)
  Disable
IP Address
  192.168.192.168
Subnet Mask
  255.255.255.255
Default Gateway
  -
Acquire DNS Server Address Automatically
  Disable
DNS Server Address
  -

<Wireless>
MAC Address
  -
Hardware Version
  -
Software Version
  -
Communication Standard
  802.11b/g
Network Mode
  Infrastructure
SSID
  EpsonNet
Wireless LAN Frequency Region
  -
Ad-Hoc Channel
  1
Authentication Method
  Open System
Security Mode
  None
```

```
<Wireless TCP/IP>
Get IP Address
  Manual
Set using Automatic Private IP Addressing
(APIPA)
  Disable
IP Address
  192.168.192.168
Subnet Mask
  255.255.255.255
Default Gateway
  -
Acquire DNS Server Address Automatically
  Disable
DNS Server Address
  -

<Time Server Setting>
Use Time Server
  Disable
Get Time Server
  Manual
Time Server
  -
Time Server Status
  -

<Proxy Configuration>
Proxy URL
  -
ID
  -
Web Contents Update UseProxy
  Disable
Server Direct Print UseProxy
  Disable
Status Notification UseProxy
  Disable

<Device>
local_printer
  TM-T88V-i
  Connection Enable

<Customer Display>
local_display
Use
  Enable
Communications speed (bps)
  9600
Data bit
  8
Parity
  None
Brightness setting
  100

<KeyInput Device>
<Serial Communication Device>
local_serial
use
  Enable
Communications speed (bps)
  9600
Data bit
  8
Parity
  none
Stop bit
  1
Flow control
  none
```



```

<Web Contents Update>
Use Automatic Update
  No
Date of Installed Web Contents
  -
Date of Last Automatic Update
  -
Status of Last Automatic Update
  Not updated automatically yet

<Server Direct Print>
Use
  Disable

<Status Notification>
Status Notification
  Disable

<PHP>
Use microSD
  No

```

Troubleshooting

If an error occurs, the contents of the error are printed in the printing result. Refer to the solutions below to solve the issue.

Process	Printing result when an error occurs	Solution
During set-up preparation	not exist "%Section%->%Key%" key. <Example> not exist "WiredLinkLayer->Link-Speed" key.	Could not find the %Key% key for the %Section% in the setting.ini file. Check and correct the content of the setting.ini file.
	Invalid setting.ini found.	The format of the setting.ini file is not correct. Check the format of the setting.ini file.
	Password does not match.	Failed to authenticate password for EPSON TMNet WebConfig. Correct the value for the Password key in the Password section of the setting.ini file.
	Multiple sections which to register local printer found.	Found multiple Printer-%X% sections to be registered as a local printer. Please designate only one Printer-%X% section as a local printer.
	Multiple sections which has the same name found.	Multiple sections with the same name were found for Printer-%X% or NetworkPrinter-%X%. Change the integer value for %X% so that there are no duplicate names.
	The section which to register local printer not found.	Could not find the Printer-%X% section to be registered as a local printer. Please designate the Printer-%X% to use as a local printer.
	Multiple sections as which MACAddress is the same found.	Found multiple NetworkPrinter-%X% sections with the same MACAddress key. Designates different MACAddress key values for each NetworkPrinter-%X% section.

Process	Printing result when an error occurs	Solution
Applying New settings	Invalid%Key% <Example> InvalidIPAddress	The format for the %Key% key in the setting.ini file is not correct. Check and correct the key for the setting.ini file.
	DeviceNotFound	Could not find the TM printer designated by the MACAddress key in the (NetworkPrinter-%X%) section. Connect the applicable TM printer, and confirm that the power is on.
	DeviceNotWireless	Although wireless LAN settings are designated in the (NetworkPrinter-%X%) section, the printer detected at the MACAddress of the same section is a wired LAN printer. Delete the wireless LAN settings for the applicable printer. Or, if setting a wireless LAN TM printer, connect it with a USB cable.
Web content deployment	WebContents not found.	Could not find the designated web content file. Check and correct the content of the AppliedLocalFile key in the (WebContents) section.
	Failed to extract the Web Contents.	The designated web content file is incorrect. Check and correct the content of the file designated by the AppliedLocalFile key in the (WebContents) section.
	Not enough space to extract the Web Contents	The size of the designated web contents file exceeds 30MB. Check if the file size designated by the AppliedLocalFile key in the (WebContents) section is 30MB or less and correct the error.
	microSD Card is not found	(WebContentsStorage) section Although "microSD" is designated as the value for the WebContentsStorage key, there is no microSD card inserted in the TM-i. Check if a microSD card is inserted in the TM-i.