

Mirrored Displays

About this Guide

This guide consists of two sections:

- **Overview:** A brief description of what a mirrored display is.
- **How to Configure:** A procedure that can be followed to configure this in a Multi-Station KDS system. This guide assumes that you already have a 2 Station KDS system setup as described in the Epson KDS Multi-Station Quick Start Guide.

This guide is relevant for:

KDS FW: **v2.30**

KDS Utility (Windows): **v2.3.1.0**

Overview

A Mirrored Display is a display that shows the exact same information as another display or displays. All displays will show the exact same information and bumping from one display will cause the item to be bumped off and disappear from the other(s).

Device 1		Device 2	
Station	Order	Station	Order
1	Chicken Sandwich	1	Chicken Sandwich
2	French Fries	2	French Fries
3	POP	3	POP
4	Classic Hamburger	4	Classic Hamburger
5	Coffee	5	Coffee
6	Weggie Burger	6	Weggie Burger
7	Salad	7	Salad
8	Classic Hamburger	8	Classic Hamburger
9	French Fries	9	French Fries
10	POP	10	POP

Figure 0.1 – Screens from Device 1 and Device 2 are the same

How to Configure Mirrored Displays

This procedure assumes that you already have a 2 Station KDS system setup as described in the Epson KDS Multi-Station Quick Start Guide. However, these same steps would need to be applied for setting up a mirrored display in any Multi-Station KDS.

Step 1: Assign Display to Device 1

1. Select **Devices**.
2. Choose “**Device 1**”.
3. Select the **Display** (e.g. Kitchen) you want to mirror in **Display Manager**.

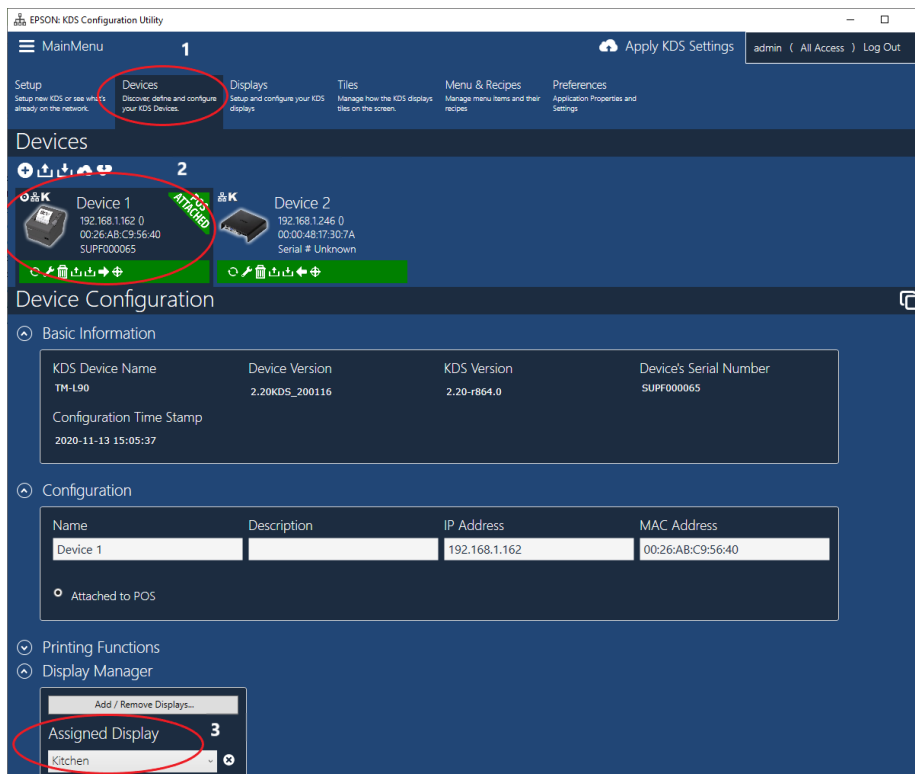


Figure 1.1

Step 2: Assign Same Display to Device 2

1. Select “Device 2”.
2. Choose the same Display (Kitchen) as “Device 1” in Assigned Display.
3. Click “Apply KDS Settings”.

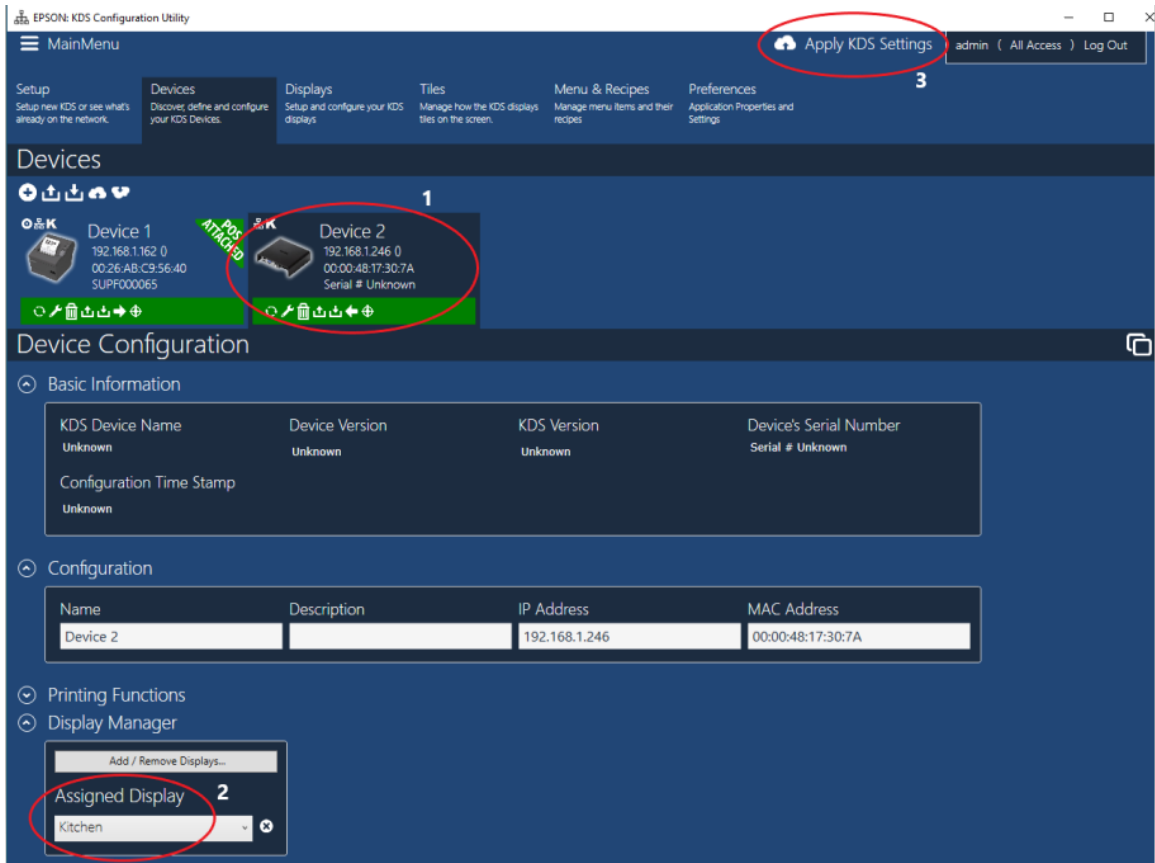


Figure 2.1

4. The new configuration will be uploaded to the system. Click **OK**.

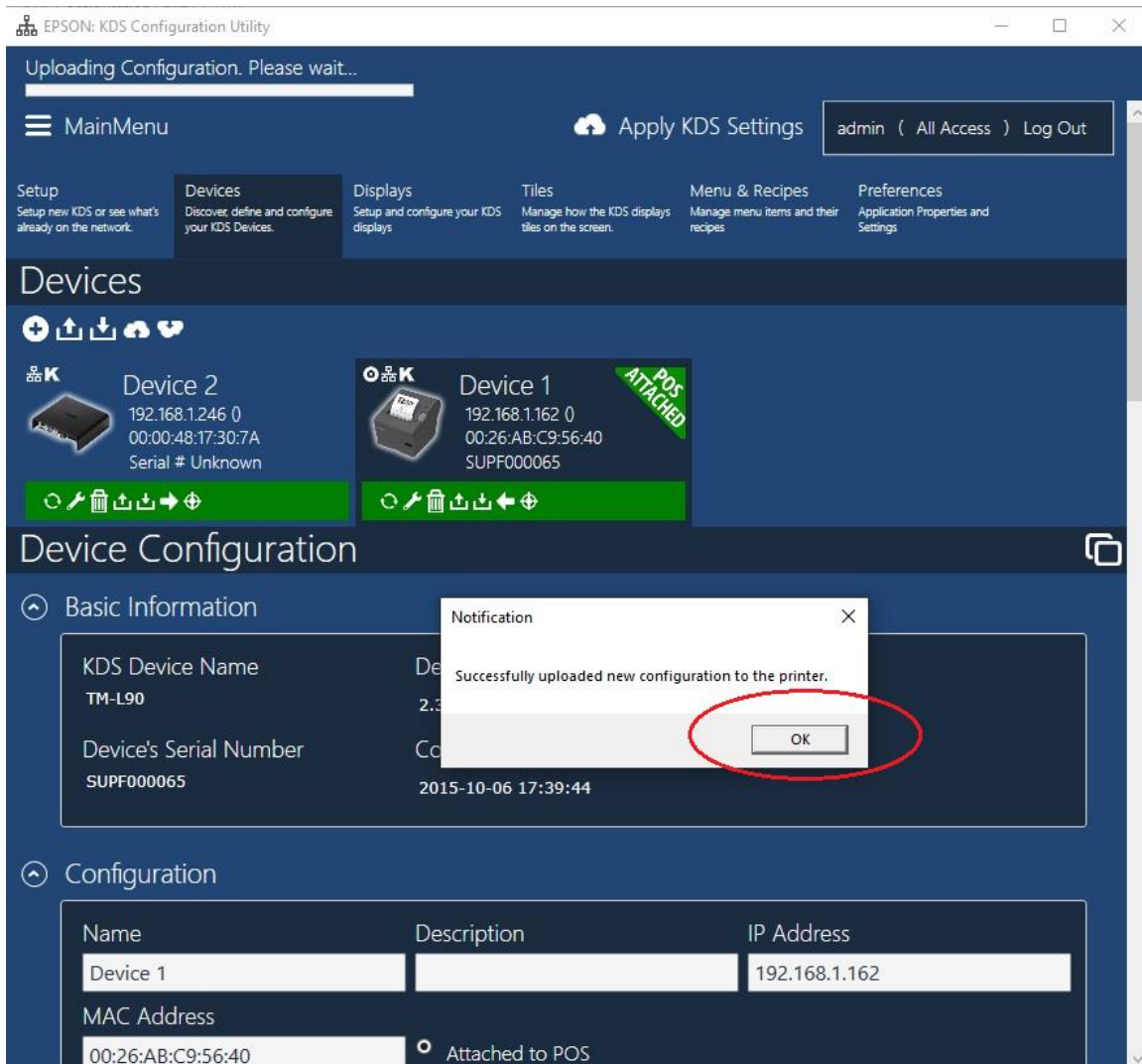


Figure 2.2 – Configuration Successfully Uploaded

5. The displays attached to each device now will show the exact same information and react to bump or touch presses from either station.