

Display Tiles

About this Guide

This guide consists of 3 sections:

- **Overview** – A brief description of what Display Tiles are.
- **How to Configure Display Tiles**– A procedure that can be followed to add a new Display Tile.
- **Appendix** – Highlighting the configuration options.

This guide is relevant for:

- KDS FW: **v2.50 and above**
- KDS Utility (Windows): **v2.5.0.0 and above**

Overview

Display Tiles can be created to allow for the configuration of the tile contents. The number of items to display, font size, and colors are all modifiable. Multiple display tiles can be created to allow for each display to have its own unique configuration.

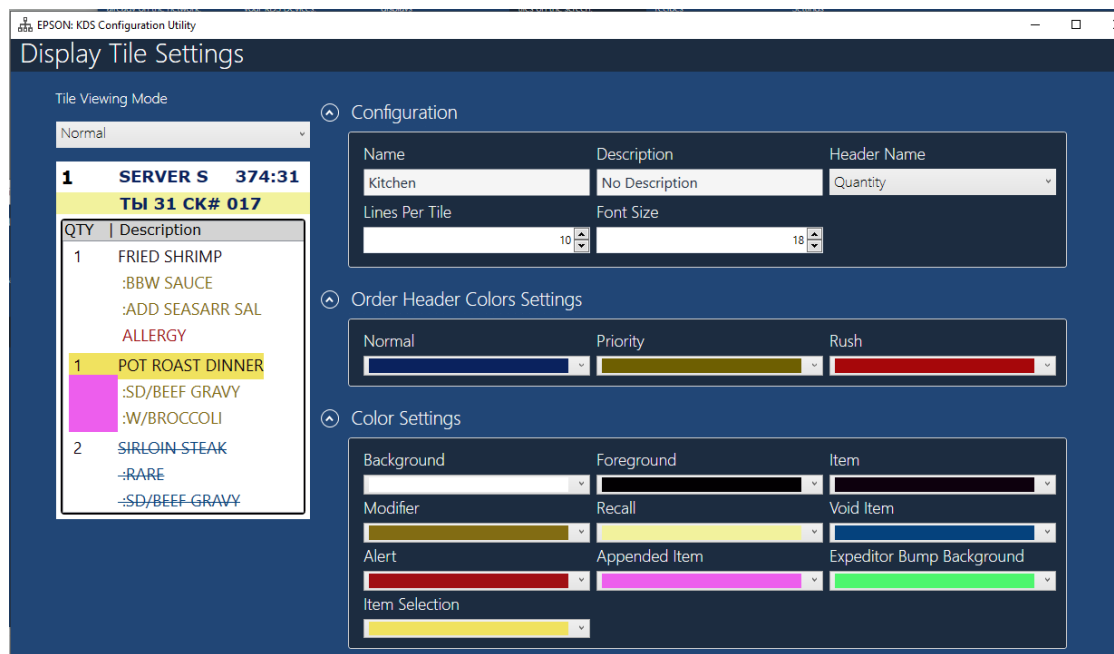



Figure 0.1 – Display Tile Settings

How to Configure Display Tiles

This procedure assumes that you already have a Single or Multi-Station KDS system setup as described in the Epson KDS Single/Multi-Station Quick Start Guides. However, these same steps can be followed for setting up Display Tiles for any display.

Step 1: Creating a new Display Tile

1. Select **Tiles** Header.
2. Click the  icon to add a new display tile.
3. Name the Tile (e.g. Kitchen, Customer Facing, Expo, etc.)
4. Click **“For Kitchen Display”**
5. Click **“OK”**

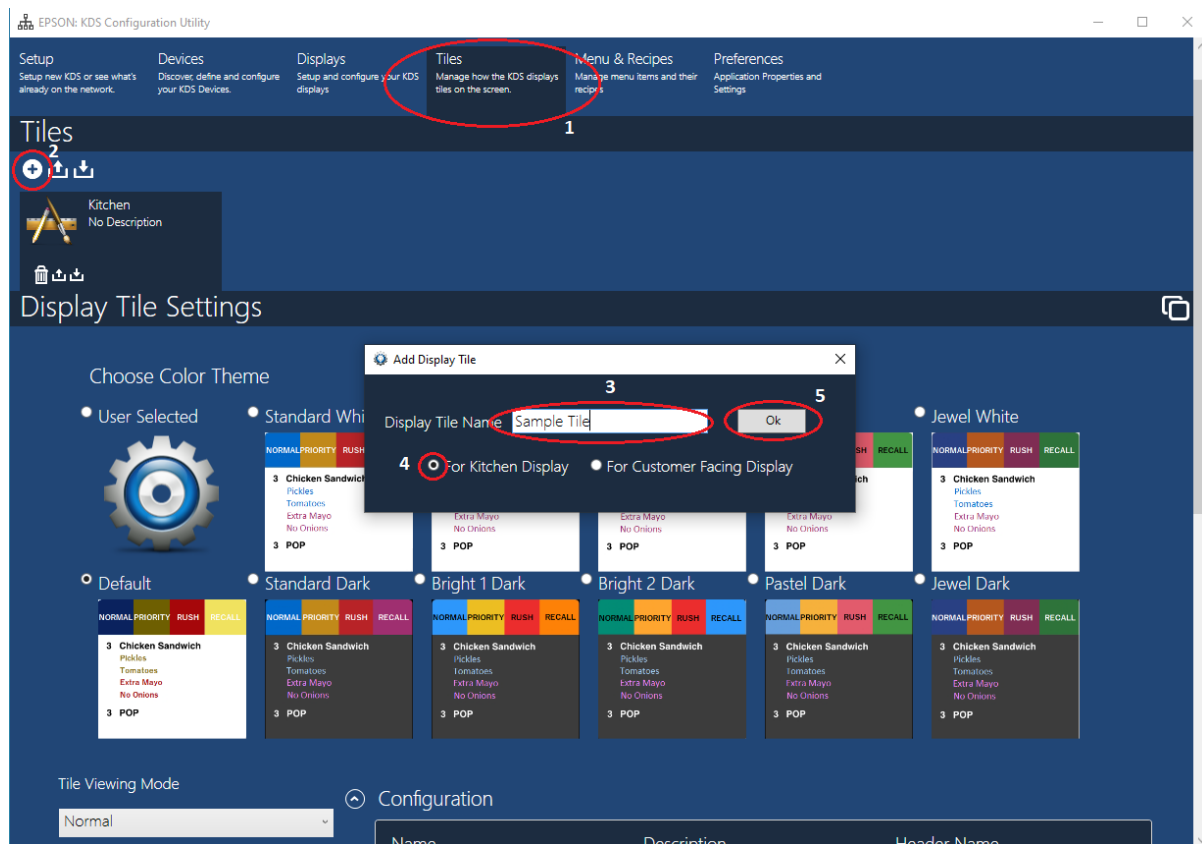


Figure 1.1 – Create a new Display Tile

The tile will be added with default configuration:

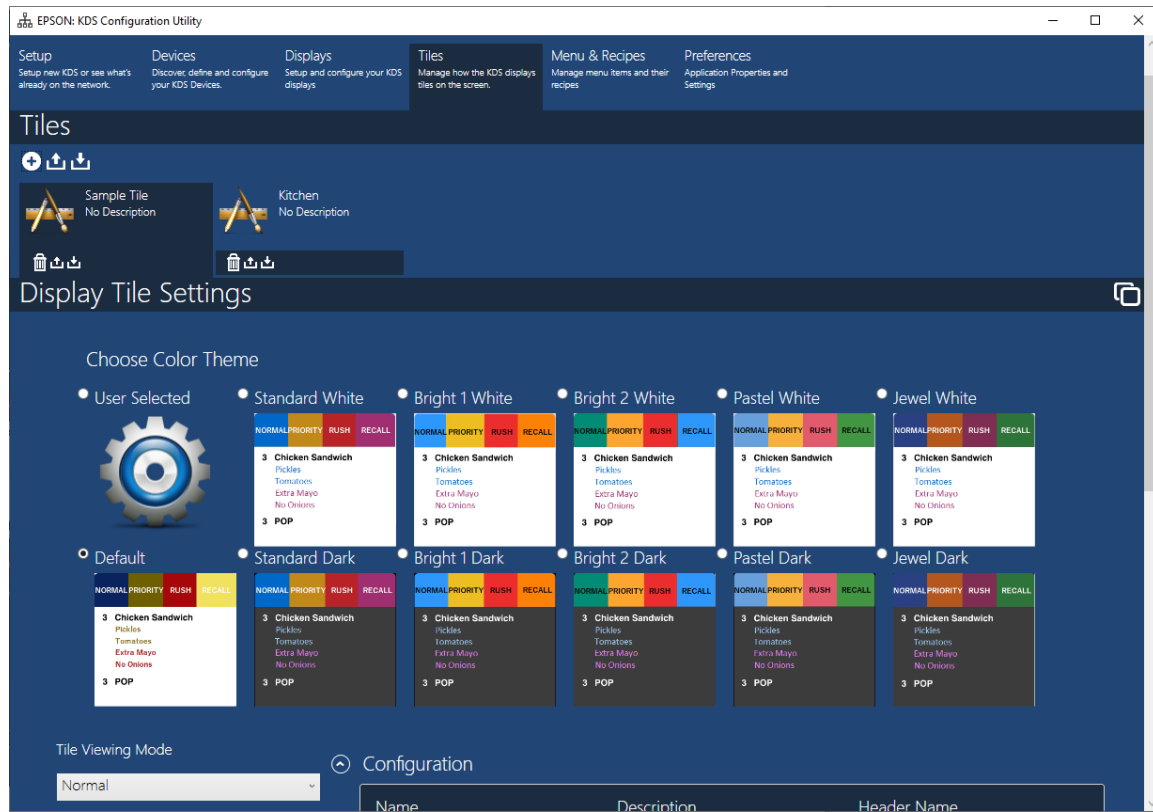


Figure 1.2 – Tile Default Theme/Configuration

Step 2: Adjust the Configuration

Adjust any of the configurable parameters. A different color theme can be selected or the user can select their own colors they prefer. Consult the Appendix of this document for more detailed description. The Tile Viewing mode renders accordingly to give an idea of what it will look like.

Step 3: Assign Display Tile to a Display

1. Select **Displays**.
2. Choose **Display 1**. (Note that any display can be selected that you wish to update with the new Tile configuration.)
3. Choose the Tile that you created in Step 1.
4. Click “**Apply KDS Settings**”

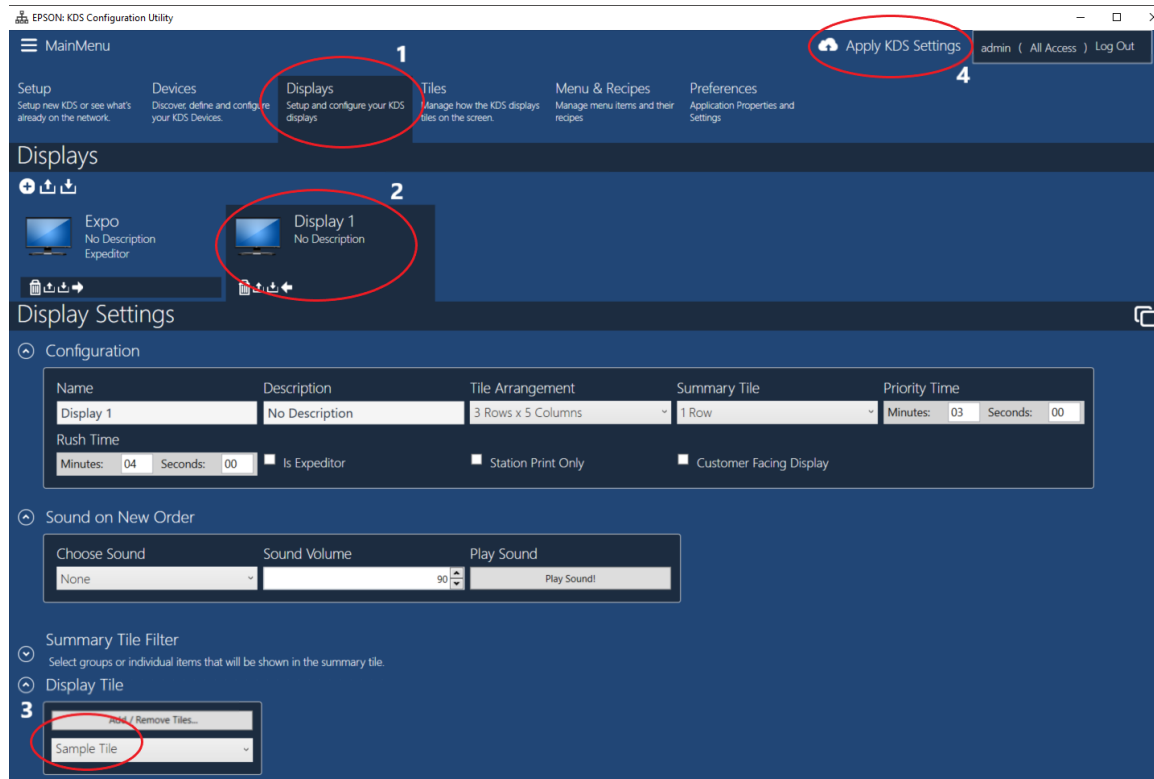


Figure 3.1 – Assign Display Tile

5. The new configuration will be applied. Press OK when prompted. The display will now have the new Tile Configuration.

Appendix

Display Tiles can be configured to customize how they look. The application will render all the changes made to the tile on the left side of the screen in the Display Tiles configuration as they happen. The following can be configured:

- **Header Name** – Quantity or Seat. If there is seat information, selecting seat would display the seat # first.
- **Lines Per Tile** – Number of lines in a tile for items, modifiers, etc.
- **Font Size** - Adjust the font size for the items, modifiers, etc.
- **Order Header Colors Settings** – Allows the tile header color to be configured for the various order urgency states.
- **Color Settings** – The colors for the items/areas in the display tile can be customized.

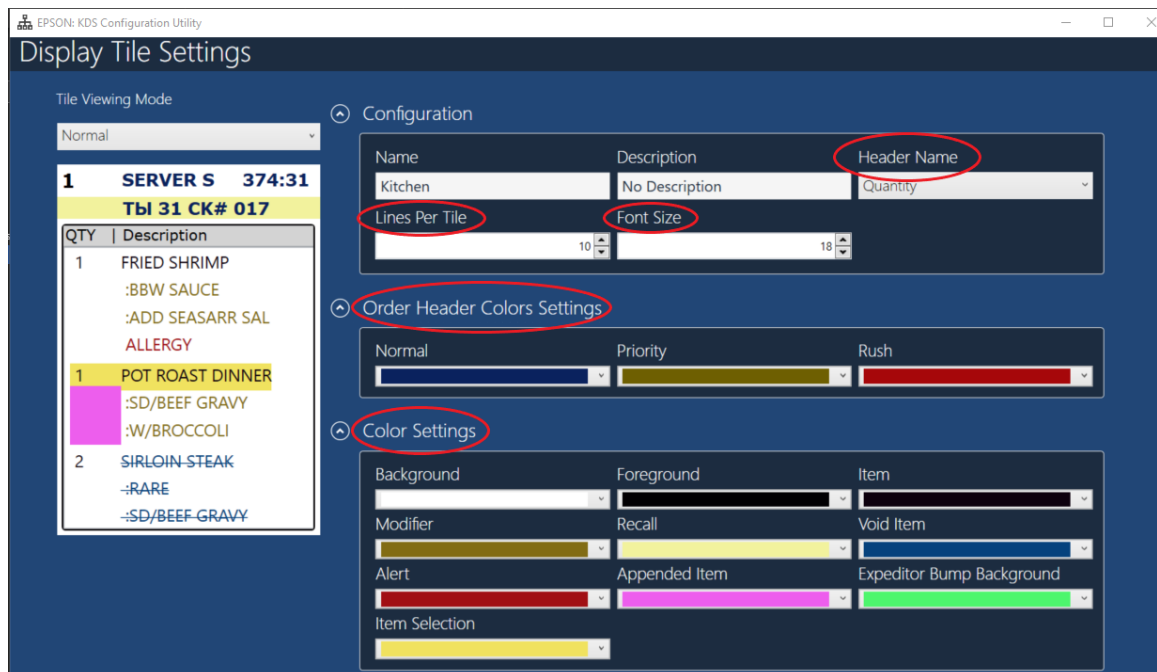


Figure A1 –Display Tile Configuration