

Sound Devices

About this Guide

This guide consists of two sections:

- **Overview** – A brief description of what Sound Devices are.
- **How-to Configure Sound Devices** – A procedure that can be followed to configure this in a Single-Station KDS Setup. This guide assumes that you already have a Single-Station KDS system setup as described in the Epson KDS Single-Station Quick Start Guide.

This guide is relevant for:

KDS FW: **v2.50 and above**

KDS Utility (Windows): **v2.5.0.0 and above**

Overview

USB speakers or USB->3.5mm audio adapters can be plugged directly into a KDS Printer or controller box to allow for sound notifications on new orders. Sounds are pre-installed onto the KDS Configuration Utility and are selectable per display.



Figure 0.1 – Example of Supported Speaker and USB->3.5mm adapter

How to Configure Sound Devices

This procedure assumes that you already have a Single-Station KDS system setup as described in the Epson KDS Single-Station Quick Start Guide. However this procedure can be followed to configure a sound device for any KDS device.

1. Connect your speaker into the USB port of the printer.

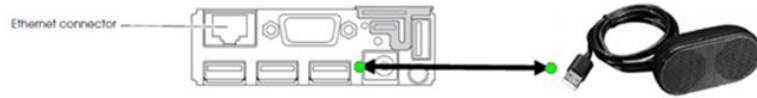


Figure 1.1 – USB-A Audio Cable Connection



Figure 1.2 – 3.5mm Audio Cable Connection

2. In the KDS Utility, select the **Devices** configuration.
3. Select the **Device** that has the USB speaker/adaptor connected.

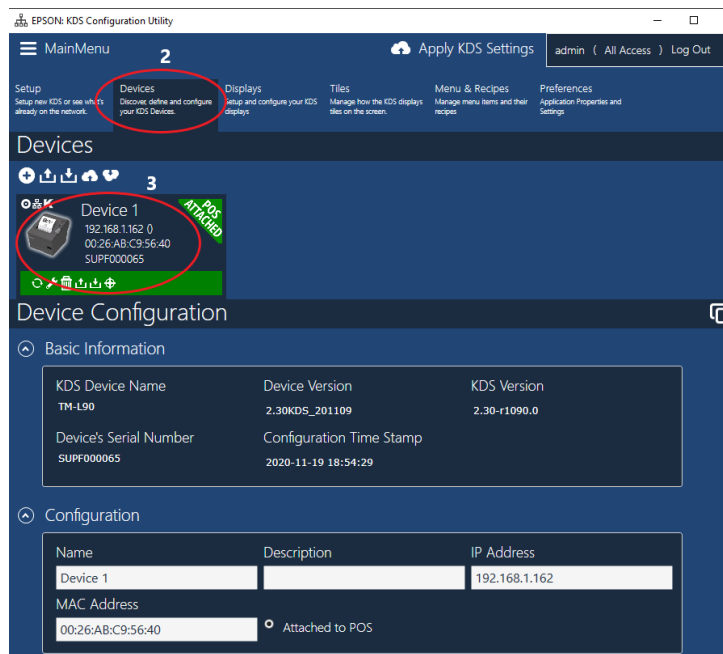


Figure 1.3 – Select KDS device for audio

4. Go to the **“Sound on New Order”** section.
5. Select **“Choose Sound”** and click **“Play Sound”**. This allows the user to preview the selected sound on the PC if it has sound capability.

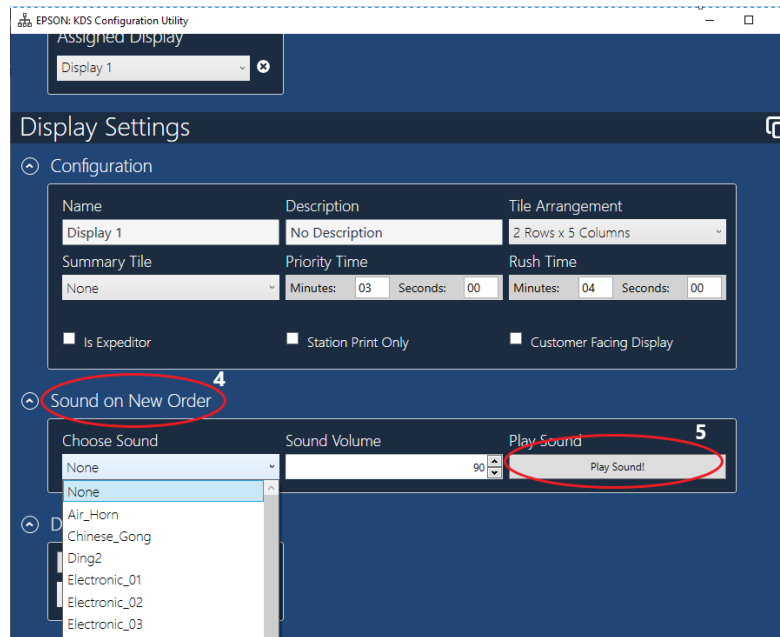


Figure 1.5 – Sound Selection

6. Click **“Apply KDS Settings”** at the top of the Utility

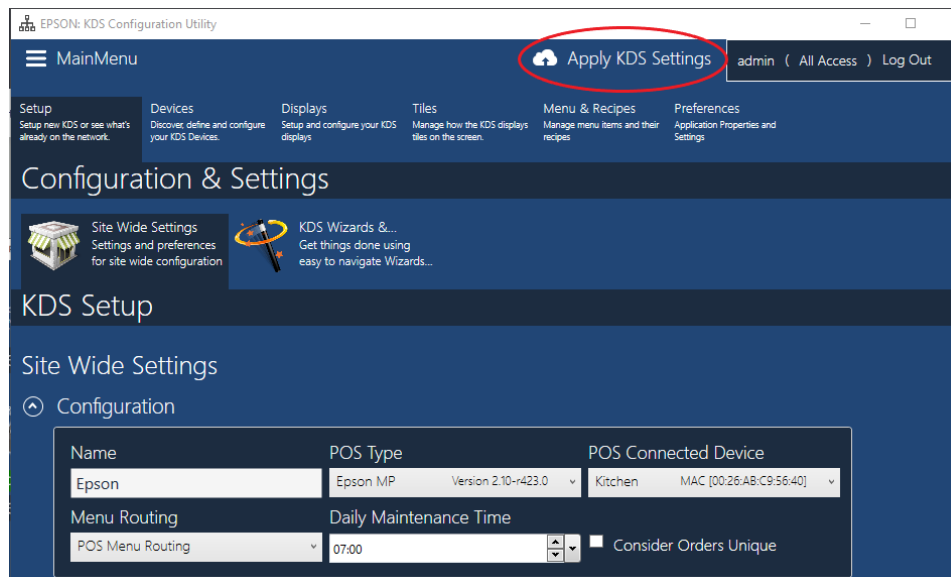


Figure 1.6 – Apply KDS Settings

7. The desired sound will be played on any incoming order.