

KDS Menu Routing

About this guide

This guide consists of 2 sections:

- **Overview-** A detailed description of what KDS Menu Routing is and its functionality.
- **How to use the KDS Menu Routing function** – A procedure to be followed within a Multi-Station KDS Setup. This guide assumes that you have a Multi-Station KDS setup with multiple prep stations.

This guide is relevant for:

KDS FW: **v2.50 and above**

KDS Utility (Windows): **v2.5.0.0 and above**

Overview

In KDS Menu routing all print jobs are sent directly from the POS to the Omnilink Master “POS Attached” printer. The menu configuration and routing determine which screens the orders are sent to.

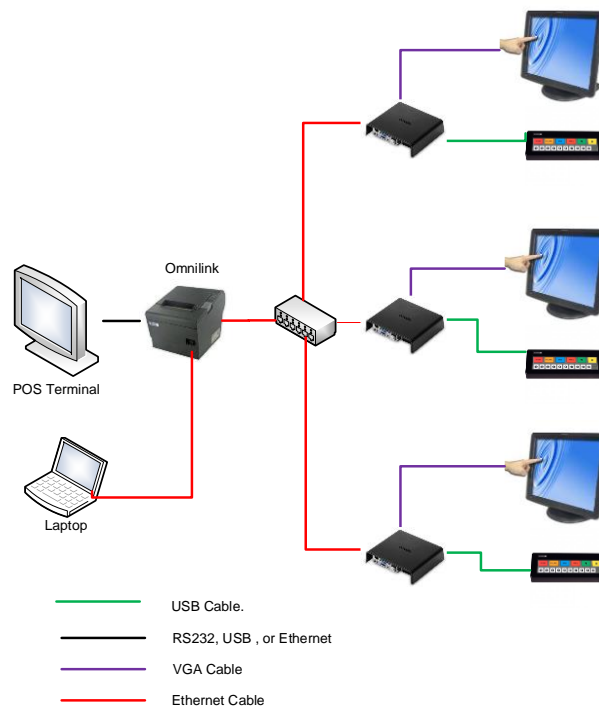


Figure 0.1 - Sample Multi Screen Scenario – KDS Menu Routing

How to Configure KDS Menu Routing

This procedure assumes that you already have a Multi-Station KDS system setup with multiple prep stations.

Step 1: Configure Site Wide Settings

1. Select **Setup** configuration.
2. Ensure that your **POS Connected Device** selected is the Master Printer.
3. Select **KDS Menu Routing** from the Menu Routing Drop Box.

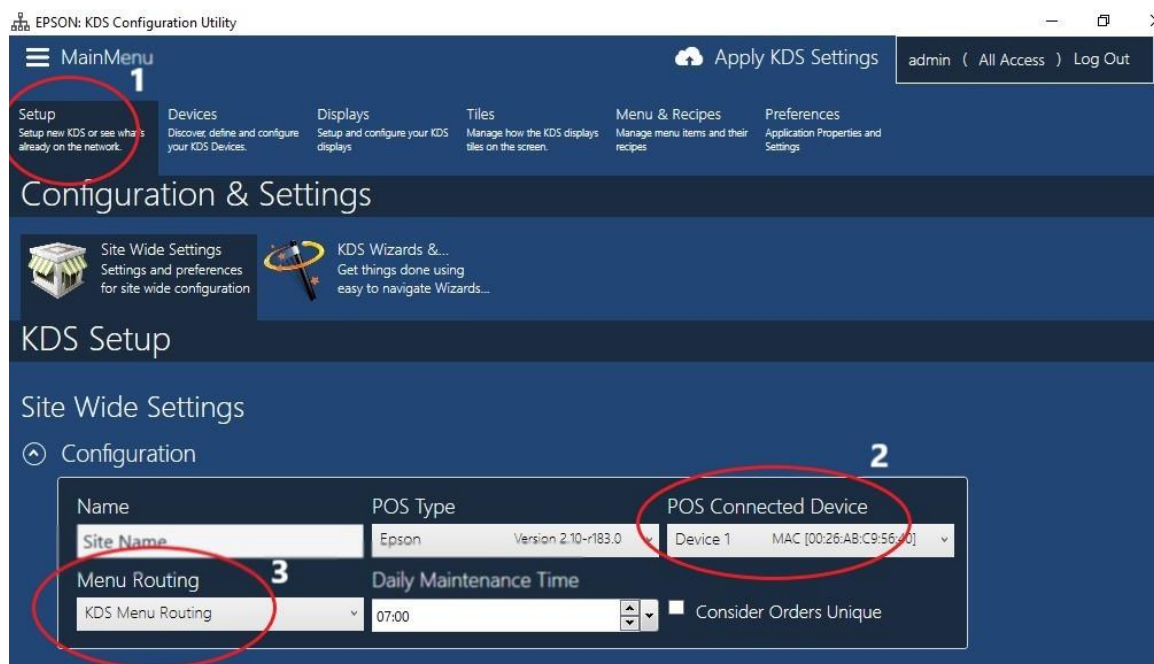


Figure 1.1 – Configure Site Wide Settings

Step 2: Configure Menu Items and Groups.

Please consult the KDS Menu and Recipes Quick User Manual for more details about how to configure a menu.

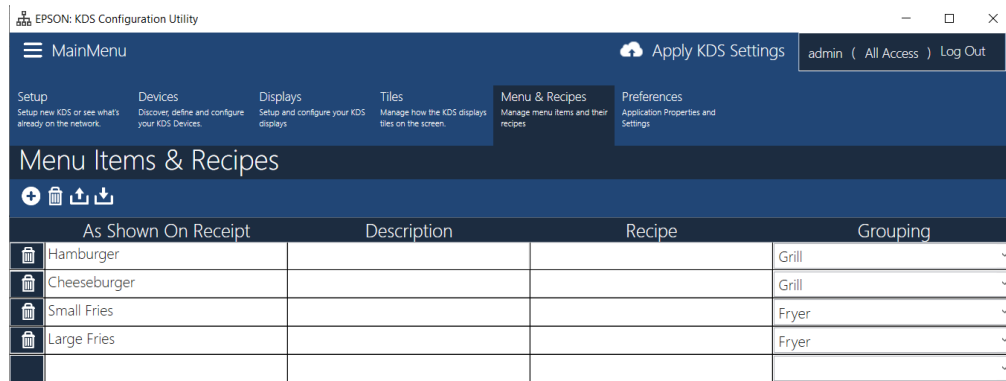


Figure 2.1 – Configure Menu Items and Groups

Step 3: Configure the menu items for your displays.

1. Select the display that you want to configure.
2. Scroll to the **Menu Items Filter**.
3. Select the menu items that you want shown on that display.

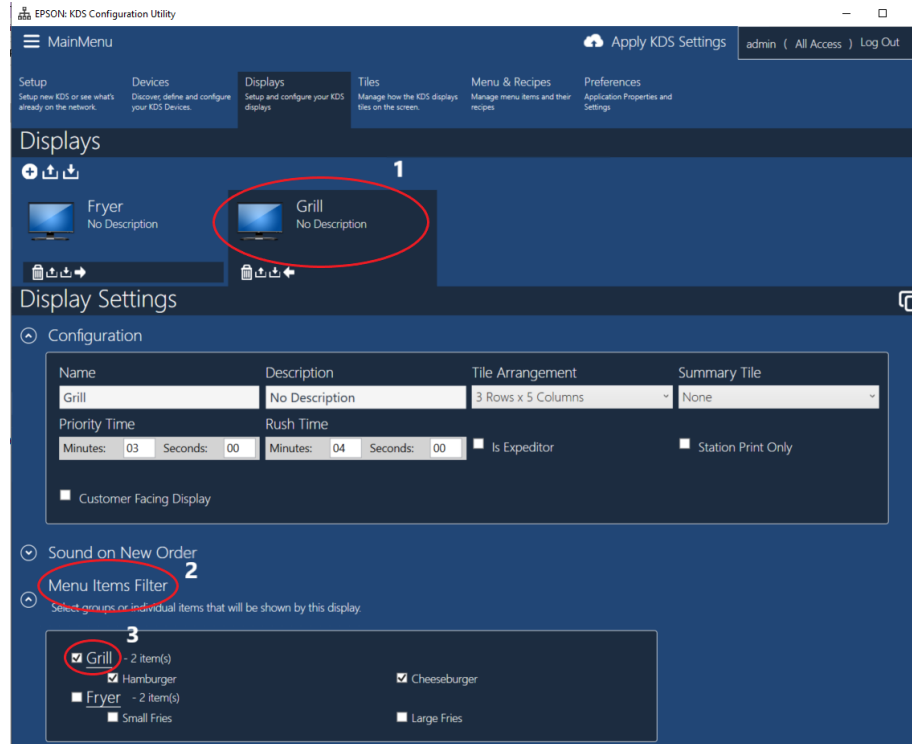


Figure 3.1 – Designate Displays to Stations

Step 4: Apply KDS Settings.

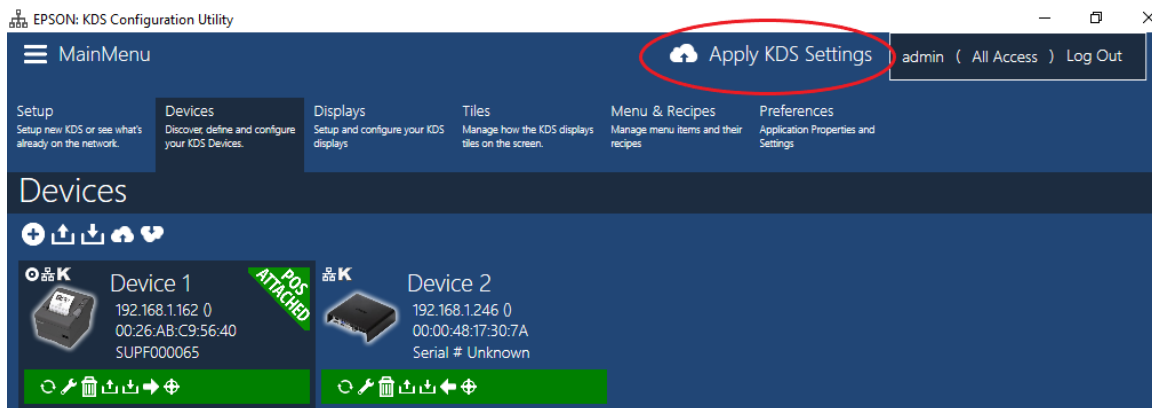


Figure 4.1 – Apply KDS Settings