

## Consider Orders Unique

### About this Guide

This guide consists of 2 sections:

- **Overview** – A detailed description of what the Consider Orders Unique configuration is and its functionality.
- **How to Configure** – A procedure to be followed within any KDS Setup. This guide assumes that you have a KDS already setup as described by the Epson KDS Quick Start Guides.

This guide is relevant for:

KDS FW: **v2.50 and above**

KDS Utility (Windows): **v2.5.0.0 and above**

## Overview

The **Consider Orders Unique** configuration option allows every order sent to the KDS to be treated as a separate order, showing up in a new tile; even if there is a matching order number already in the system - appends to that order are not be performed. We append a -1, -2, -3... to the order number to distinguish in the system.

0 ◀ RECALL		Kitchen		Wed Feb 17 10:30 AM 2021		AVG Time MM:SS		▶ 0	
1	John Smith Tbl 1 CK# 0318 01:09	2	John Smith Tbl 1 CK# 0318-1 00:42	3	John Smith Tbl 1 CK# 0318-2 00:22	4		5	
1	Cheeseburger Extra Ketchup Extra Onions	1	French Fries Chicken Noodle Soup	1	Ham Sandwich Onions Lettuce Mustard				
1	Classic Hamburger Onions Lettuce Mustard			1	Salad				
2	Salad			1	Coffee				
1	Juice				Sugar				
1	POP				Cream				
					Large				
6		7		8		9		10	

Figure 0.1 – Check #0318 was sent in 3 parts.

# How to Configure

## Step 1: Enable “Considers Order Unique” Function.

1. Click “Setup”.
2. Check the box for “Consider Orders Unique”
3. Apply KDS Settings

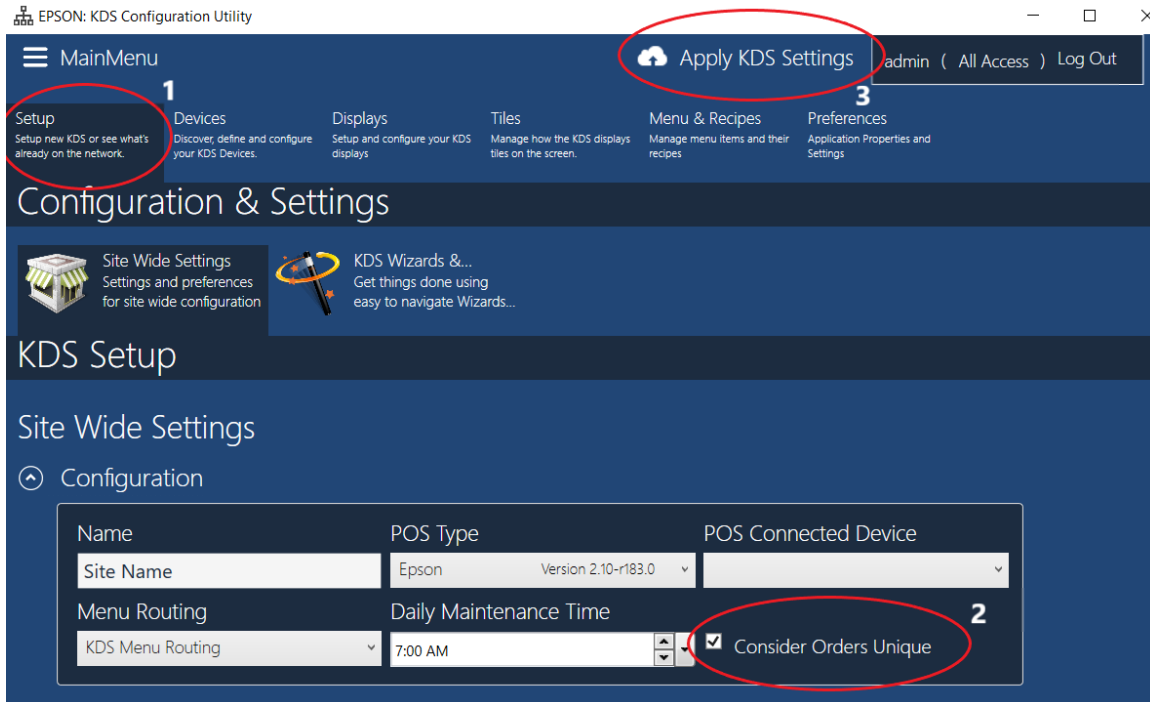


Figure 1.1 – Enabling “Considers Order Unique” Function

Every order into the system will now show up in a new tile.