

Station Print Only

About this Guide

This guide consists of 2 sections:

- **Overview** – A detailed description on what the KDS Station Print Only feature is.
- **How to Configure** - A procedure that can be followed to configure this within a Single or Multi-Station KDS system.

This guide is relevant for:

KDS FW: **v2.30 and above**

KDS Utility (Windows): **v2.3.1.0 and above**

Overview

A printer at a display station has the capability of bumping and printing the order or items in that order. This creates a ticket or label for the order sent to that station.

It may be desirable to have this order printed immediately from a KDS station when received. For example, if the items at that station are already prepared and simply require a label. Enabling the “Station Print Only” function in a KDS display accomplishes this. The KDS printer at that station then does not need a display attached nor a bump bar. An order sent to it will be automatically bumped off and printed when received.

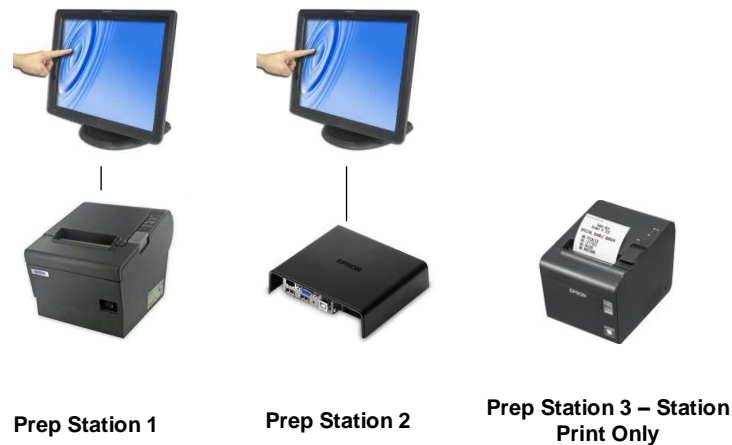


Figure 0.1 – Sample Multi-station KDS setup showing a “Station Print Only” Station

How to Configure

This procedure assumes you already have a Multi-Station KDS and wish to configure one of the stations to bump and print the incoming order.

1. Select **Displays**.
2. Select which **Display** to configure.
3. Click “**Station Print Only**”.
4. Click “**Apply KDS Settings**”.

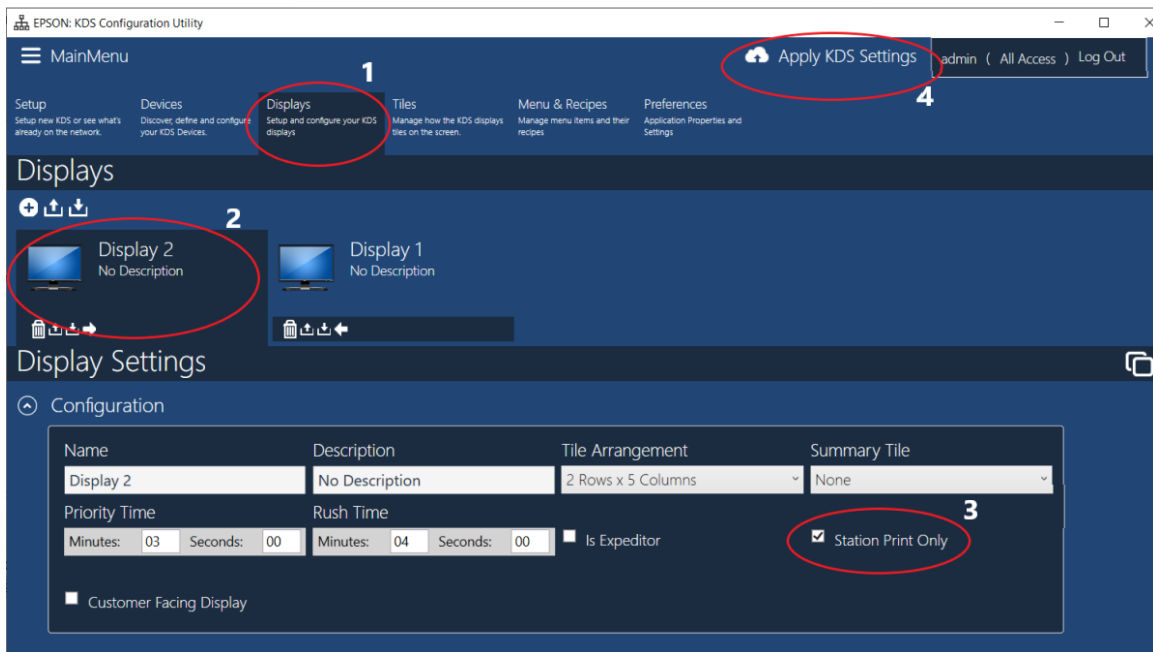


Figure 1.1 – Station Print Only

The printer at that station will now automatically bump and print an order ticket immediately for every incoming order.