

Adding a Display

About this Guide

This guide consists of 2 sections:

- **Overview**
- **How to Configure** – A procedure that can be followed to add a new device/display to your KDS system. This guide assumes that you already have a Single Station KDS system setup as described in the Epson KDS Single-Station Quick Start Guide.

This guide is relevant for:

KDS FW: **v2.30 and above**

KDS Utility (Windows): **v2.3.1.0 and above**

Overview

Additional KDS Printers or Controllers can be easily added to a Single Station KDS to turn it into a Multi-Station KDS.

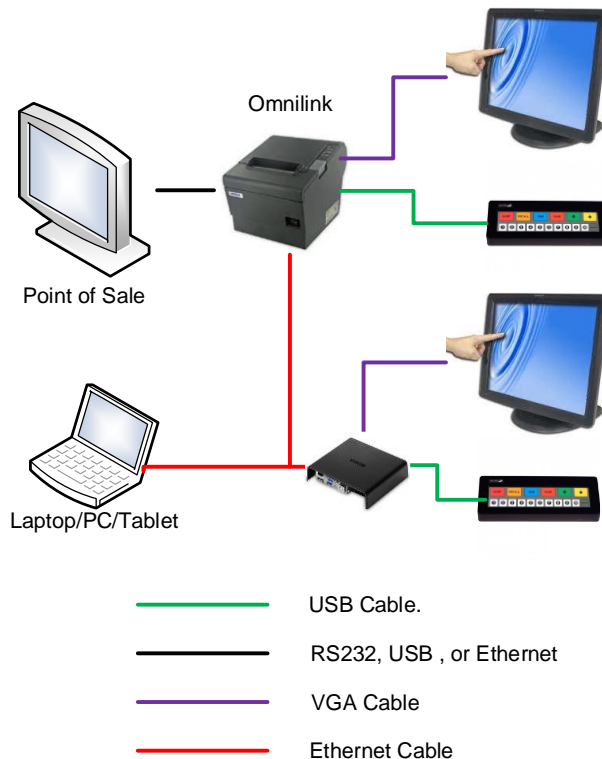



Figure 0.1 – Additional controller added to Single Station KDS

How to Configure

Multi-station KDS systems require all devices to be connected on a local network. This guide assumes your new device has been connected to the network with your existing KDS printer.

Step 1: Adding a Display

1. Select **Displays**
2. Click the  icon to add a *new Display*.
3. Give the Display a name. This is the name that will appear on the display header. You can personalize it to whatever you want.
4. Click “**OK**”.

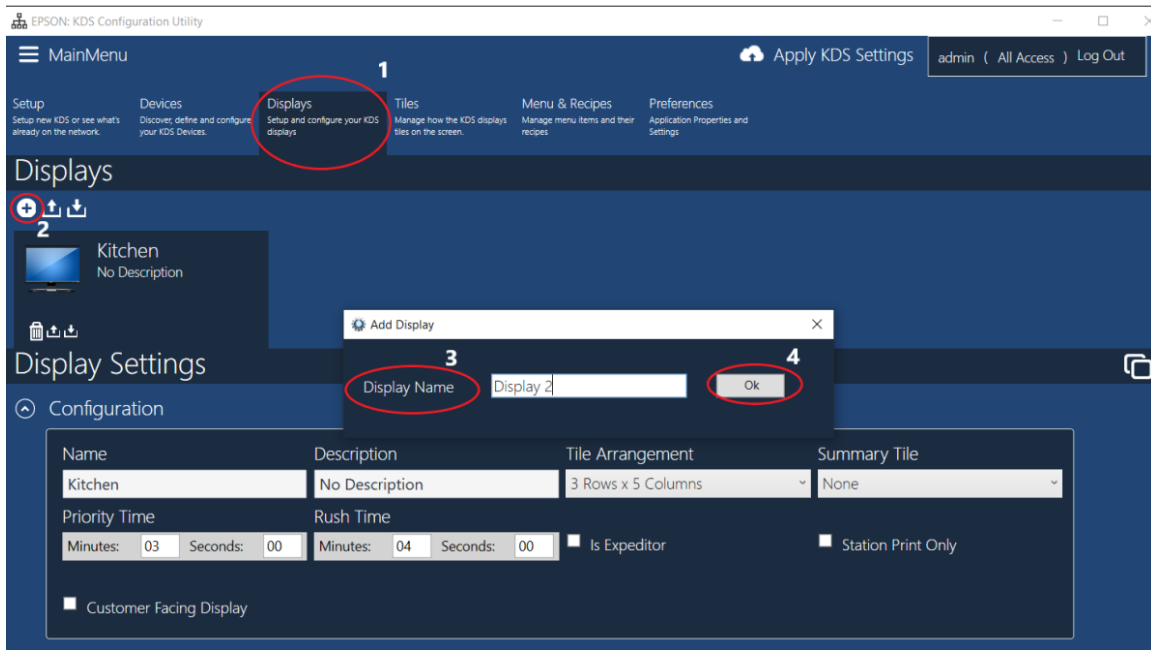


Figure 1.1 – Adding a display

5. Assign **Display Tile** to Display

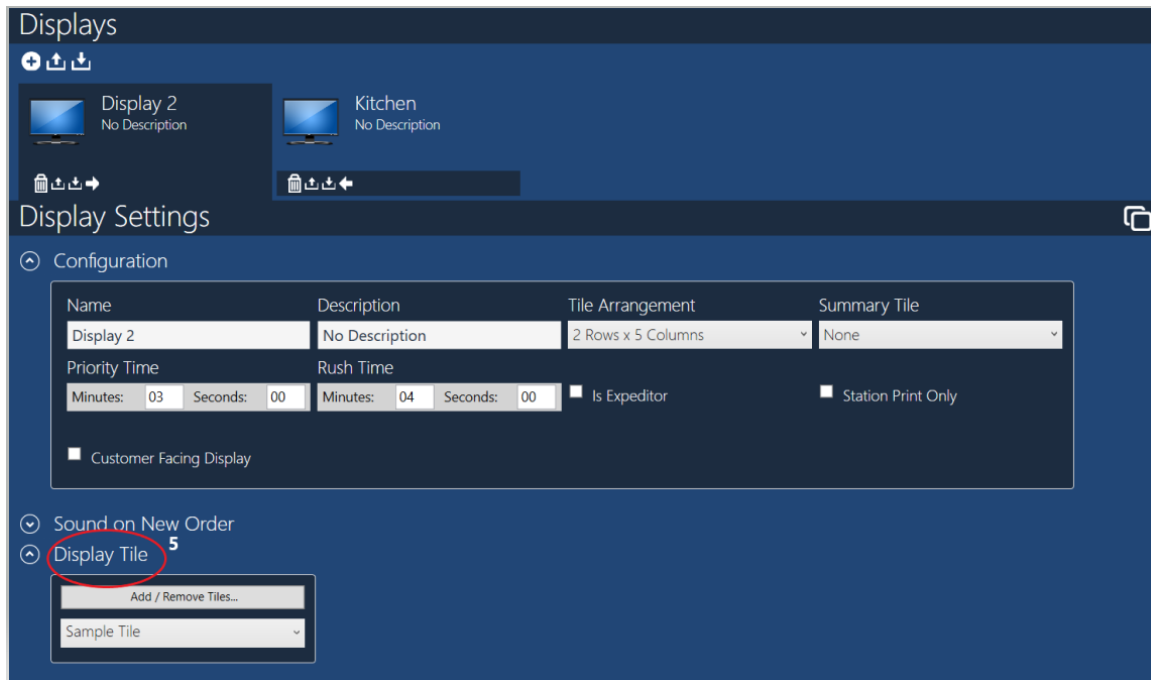




Figure 1.2 – Assign Display Tile

Step 2: Adding a Device

1. Select **Devices**.
2. Click the  icon to add a *new* Device.
3. Once Device is discovered by the Utility, click the  to add the device.

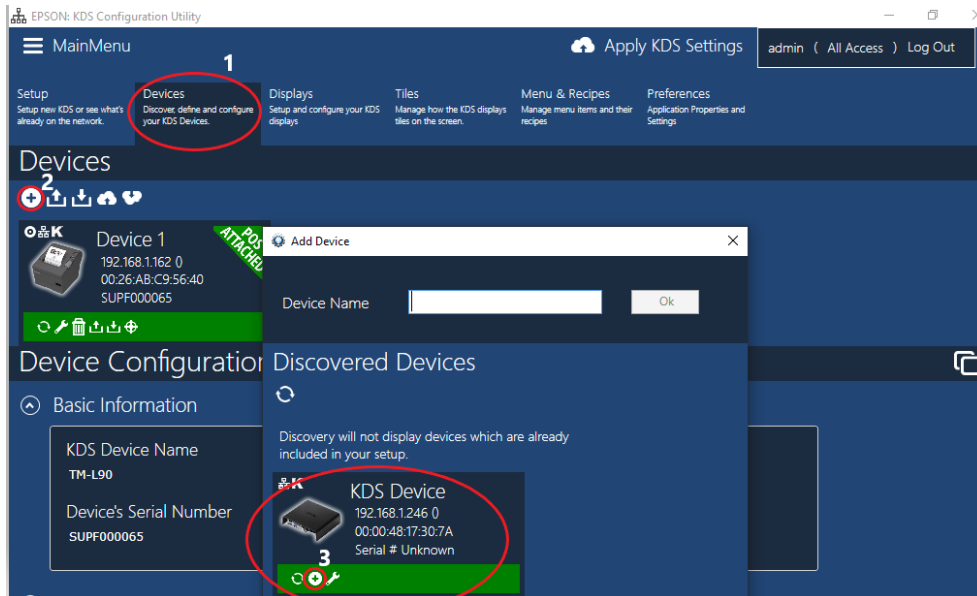


Figure 2.1 – Adding a new Device

4. In **Display Manager**, ensure that Display 2 is selected in the Assigned Display drop-box.

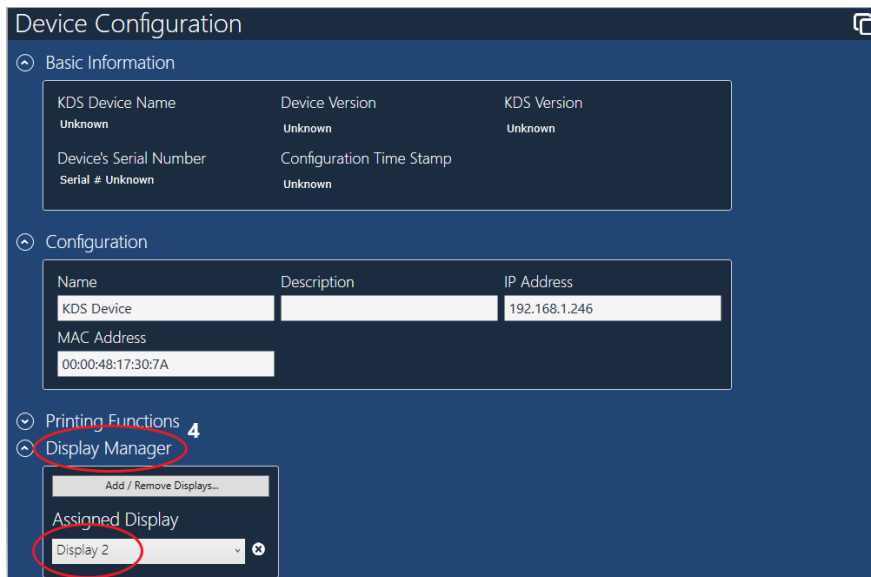


Figure 2.2 – Assigning Display to new Device

5. Click **Apply KDS Settings**

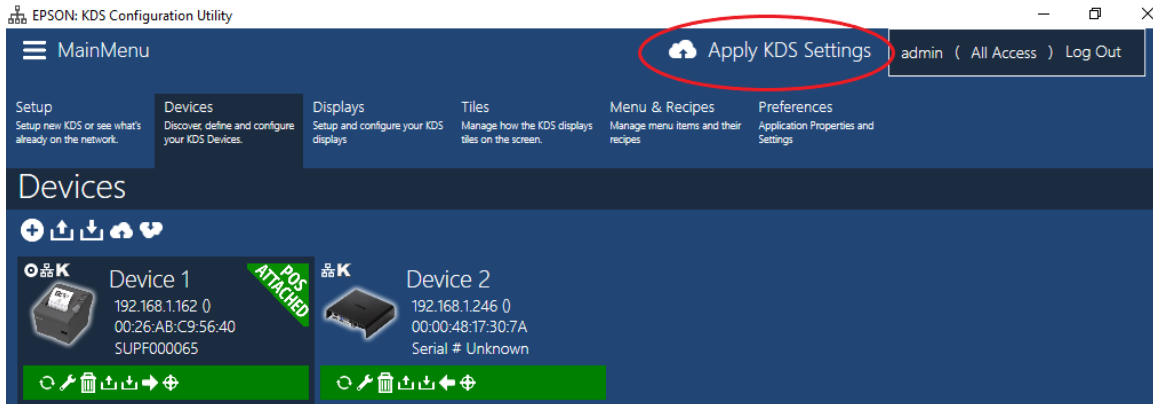


Figure 2.3 – Apply KDS Settings