

Adding a Display

About this Guide

This guide consists of 2 sections:

- **Overview**
- **How to Configure** – A procedure that can be followed to add a new device/display to your KDS system. This guide assumes that you already have a Single Station KDS system setup as described in the Epson KDS Single-Station Quick Start Guide.

This guide is relevant for:

KDS FW: **v2.50 and above**

KDS Utility (Windows): **v2.5.0.0 and above**

Overview

Additional KDS Printers or Controllers can be easily added to a Single Station KDS to turn it into a Multi-Station KDS.

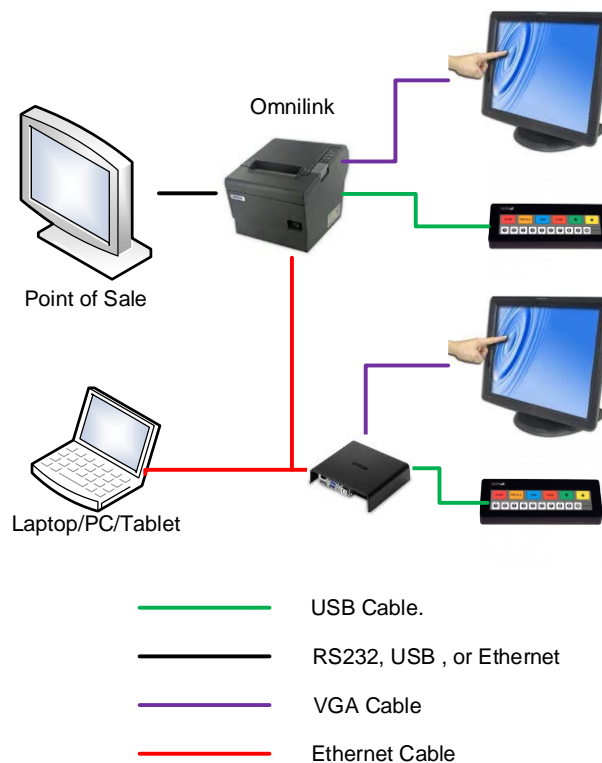



Figure 0.1 – Additional controller added to Single Station KDS

How to Configure

Multi-station KDS systems require all devices to be connected on a local network. This guide assumes your new device has been connected to the network with your existing KDS printer.

Step 1: Adding a Display

1. Select **Displays**
2. Click the  icon to add a *new Display*.
3. Give the Display a name. This is the name that will appear on the display header. You can personalize it to whatever you want.
4. Click “**OK**”.

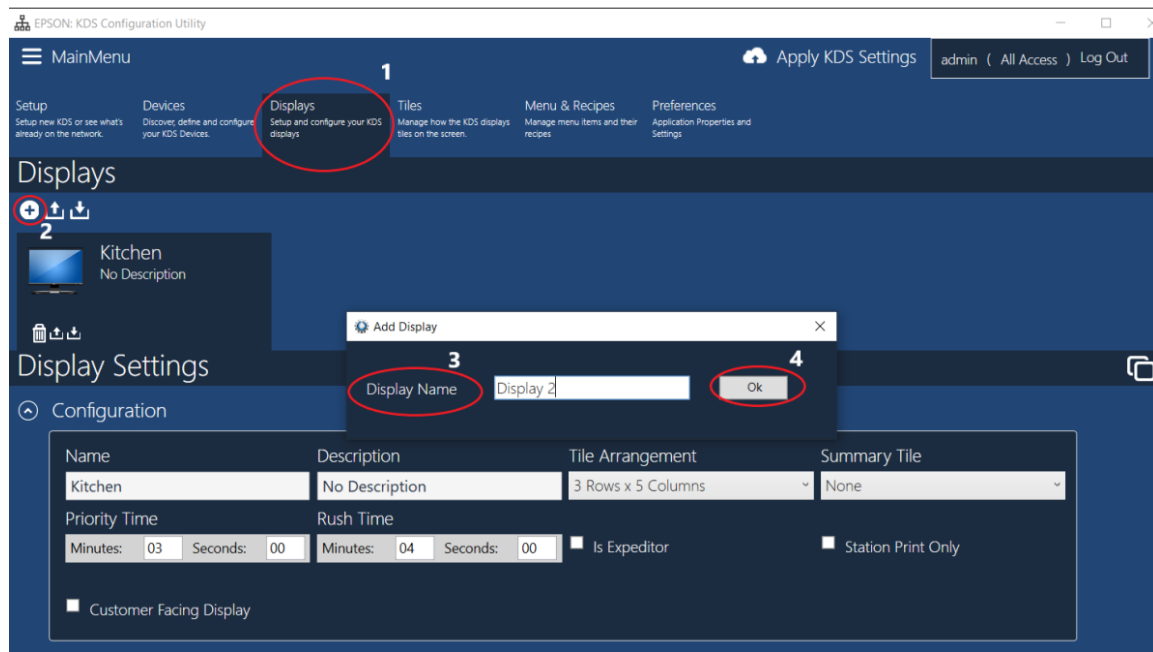


Figure 1.1 – Adding a display

5. Assign **Display Tile** to Display

The screenshot shows the 'Displays' configuration window. At the top, there are two display tiles: 'Display 2' and 'Kitchen', both with 'No Description'. Below these is the 'Display Settings' section. Under 'Configuration', there is a table with columns: Name, Description, Tile Arrangement, and Summary Tile. The table contains one row for 'Display 2' with 'No Description', '2 Rows x 5 Columns', and 'None'. Below the table are fields for 'Priority Time' (Minutes: 03, Seconds: 00) and 'Rush Time' (Minutes: 04, Seconds: 00). There are also checkboxes for 'Is Expeditor', 'Station Print Only', and 'Customer Facing Display'. At the bottom, there are two expandable sections: 'Sound on New Order' and 'Display Tile'. The 'Display Tile' section is circled in red and has a red '5' next to it. Below 'Display Tile' is a button 'Add / Remove Tiles...' and a dropdown menu 'Sample Tile'.

Name	Description	Tile Arrangement	Summary Tile
Display 2	No Description	2 Rows x 5 Columns	None

Priority Time: Minutes: 03 Seconds: 00 Rush Time: Minutes: 04 Seconds: 00

☐ Is Expeditor ☐ Station Print Only ☐ Customer Facing Display

Sound on New Order



Display Tile ⁵

Add / Remove Tiles...

Sample Tile

Figure 1.2 – Assign Display Tile

Step 2: Adding a Device

1. Select **Devices**.
2. Click the  icon to add a *new* Device.
3. Once Device is discovered by the Utility, click the  to add the device.

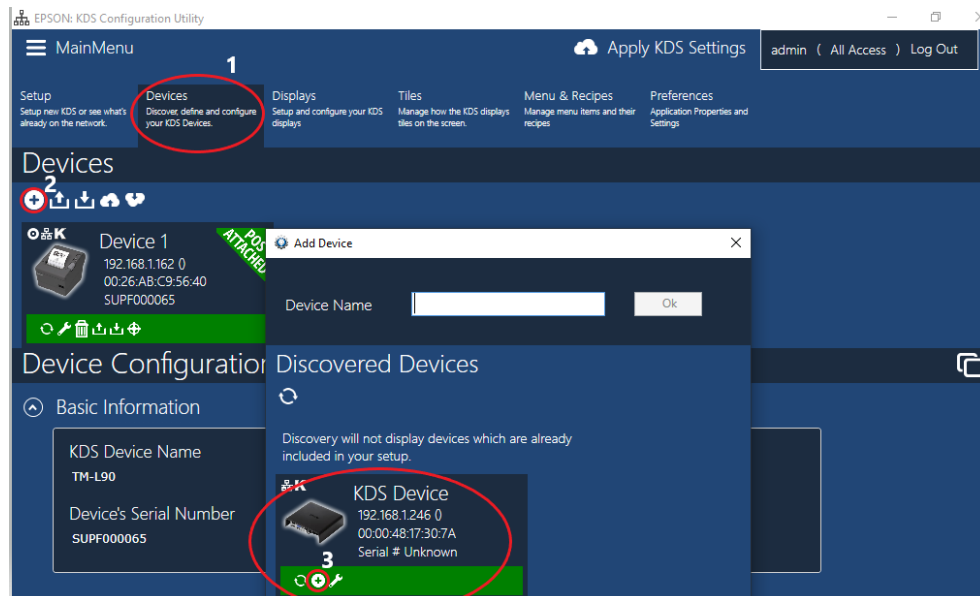


Figure 2.1 – Adding a new Device

4. In **Display Manager**, ensure that Display 2 is selected in the Assigned Display drop-box.

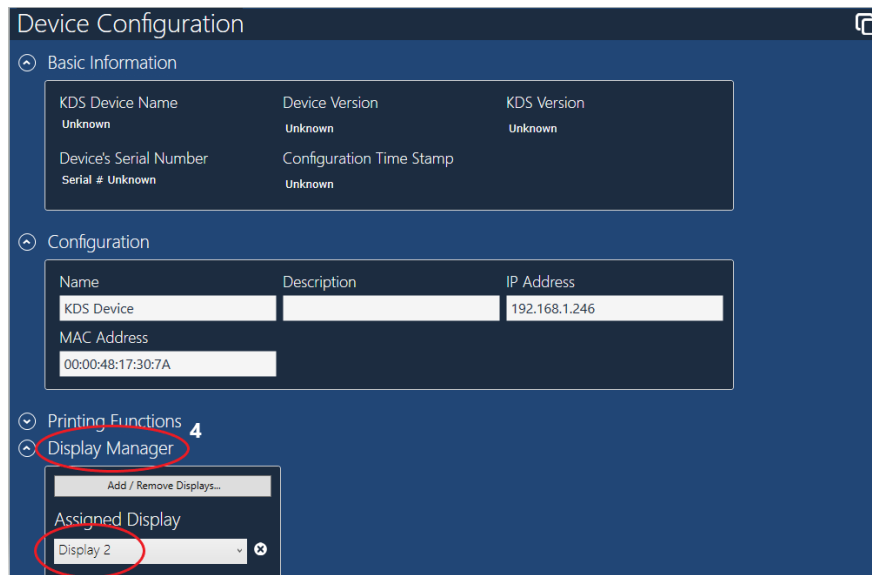


Figure 2.2 – Assigning Display to new Device

5. Click **Apply KDS Settings**

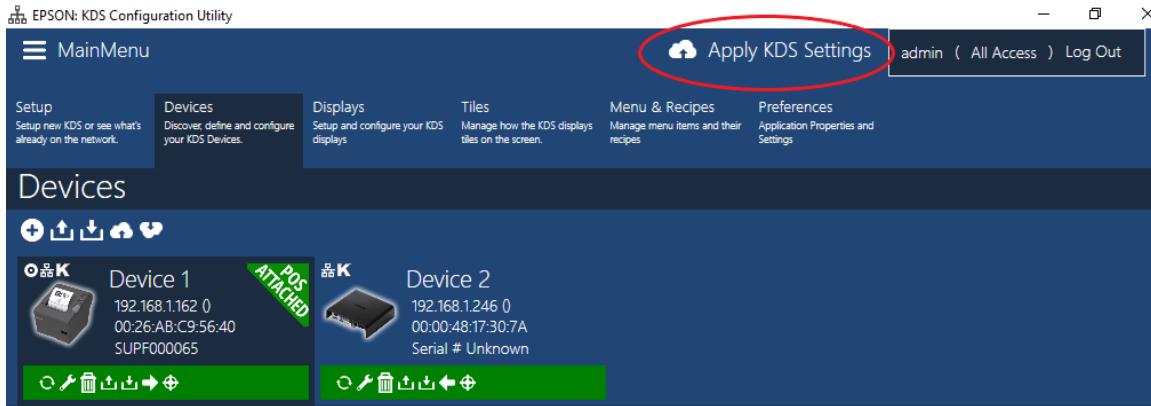


Figure 2.3 – Apply KDS Settings