

Network Settings

About this Guide

This guide consists of 2 sections:

- **Overview**
- **How to Configure** - A procedure that can be followed to configure this in a KDS system. This guide assumes you already have a Single or Multi-Station system setup as described in the Epson KDS Quick Start Guides.

This guide is relevant for:

KDS FW: **v2.50 and above**

KDS Utility (Windows): **v2.5.0.0 and above**

Overview

By default, KDS devices ship DHCP enabled, allowing them to be easily added and discovered on the local network. It may be necessary to configure the devices to a static IP and this guide explains how to do that from the Windows Configuration Utility. While the IP can be referenced from the Utility, it is also conveniently displayed on the KDS device startup splash screen:



Figure 0.1 – Startup screen of the KDS

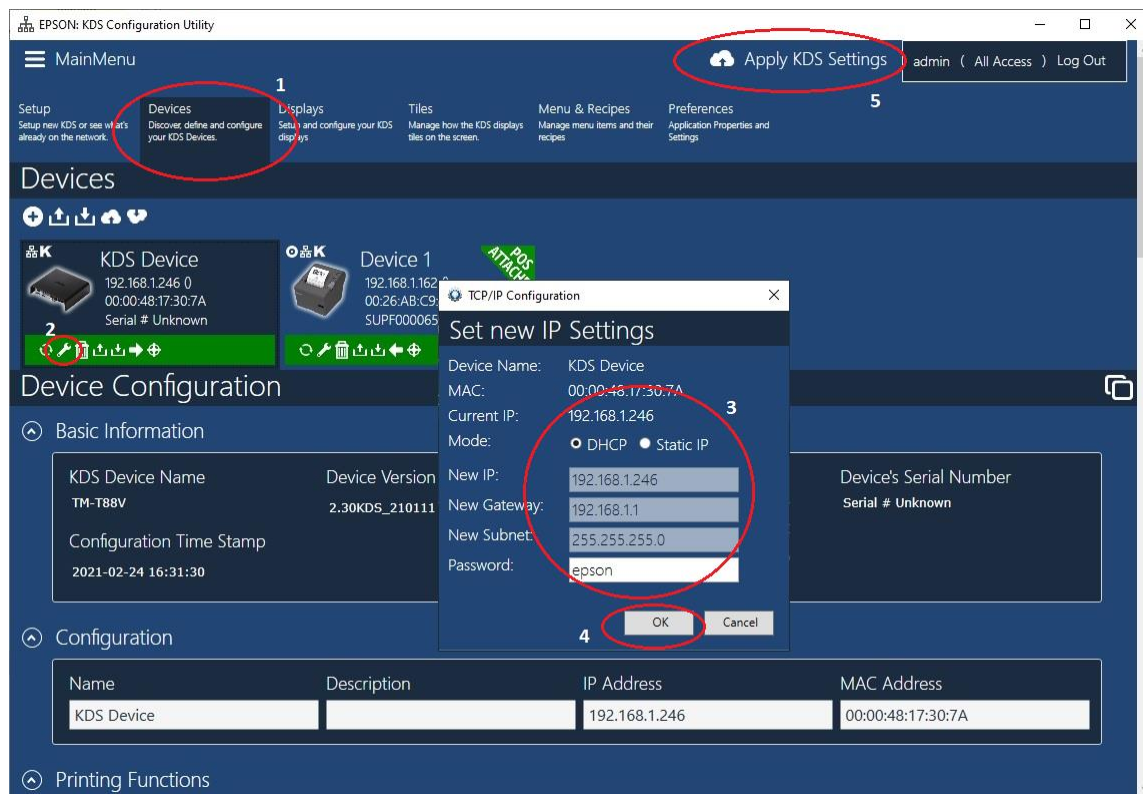
How to Configure

This procedure can be followed to configure network settings for any KDS device.

1. Select **Devices**
2. Click the wrench icon for the device you wish to configure.
3. Set the IP settings accordingly.
4. Click OK. The settings will be applied to the device.

Repeat steps 2-4 for all of the devices in the system you wish to configure.

5. Click **Apply KDS Settings**.



The system devices will now have their IP settings updated.