



111-38-URM-002

KDS Single Station

Quick Start Guide

About this Guide

This guide contains instructions for a new user to setup, configure, and use the Epson KDS in the fewest steps. It is targeted towards the Single Station Epson KDS connected to the POS via ethernet and assumes that the POS is already supported by the Epson KDS. This guide is applicable to:

KDS FW v2.50 and above

KDS Windows Configuration Utility v2.5.0.0 and above

EPSON is a registered trademark and EPSON Exceed Your Vision is a registered logomark of Seiko Epson Corporation. All other product and brand names are trademarks and/or registered trademarks of their respective companies. Epson disclaims any and all rights in these marks. Copyright 2022 Seiko Epson Corporation.

EPSON	KDS Single Station Quick Start Guide Page 1 of 20	111-38-URM-002 R2.50
--------------	---	-------------------------

Table of Contents

1. System Requirements 3

2. Setting Up a Single Station KDS 4

3. Epson KDS Configuration Utility 8

4. Configuring the KDS using the Windows Utility 9

Appendix A 15

 Bumping an Entire Order 15

Appendix B 15

Appendix C..... 16

 Setup Configuration..... 16

 Device Configuration..... 17

 Display Configuration..... 18

 Tile Configuration 19

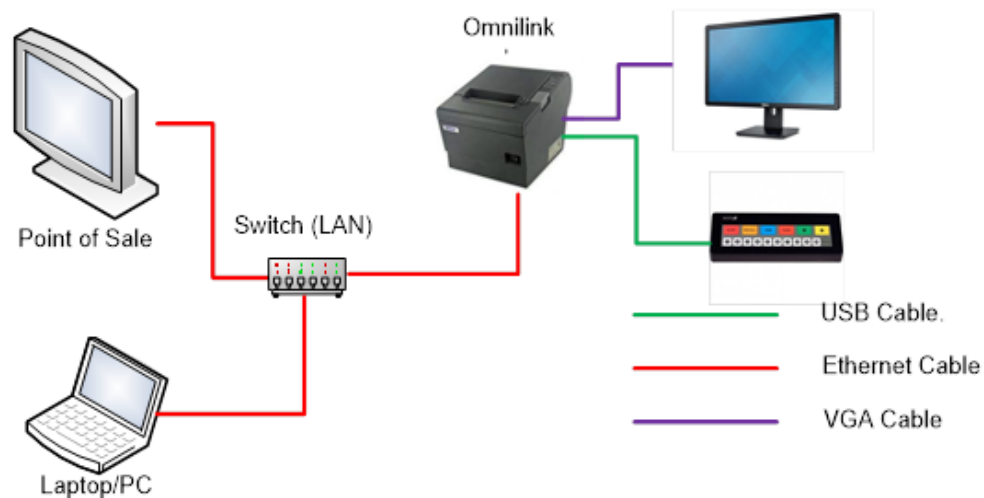
 Apply KDS Settings 20

1. System Requirements

A Single Station KDS required the following equipment:

- A U220-i, T88V-i, or L90 LFC-i printer (with VGA) containing KDS software. A KDS controller (KD-IB01) can also be used. This guide assumes an L90-i LFC printer however other KDS printers or the controller can also be used.
- An Epson KDS supported POS terminal connected to the printer via ethernet through a Local Area Network (LAN). By default the printer is DHCP-enabled and it is assumed the network is capable of providing a DHCP IP to the printer.
- A Logic Controls KB1700 USB bump bar (Legend Sheet D) connected directly to the printer or a supported touchscreen monitor can be connected instead of the bump bar.
- A 1080p HD monitor or touchscreen connected directly to the printer.
- A Windows 8.1/10 PC/laptop for running the Windows KDS Configuration Utility.

Single Station Setup:

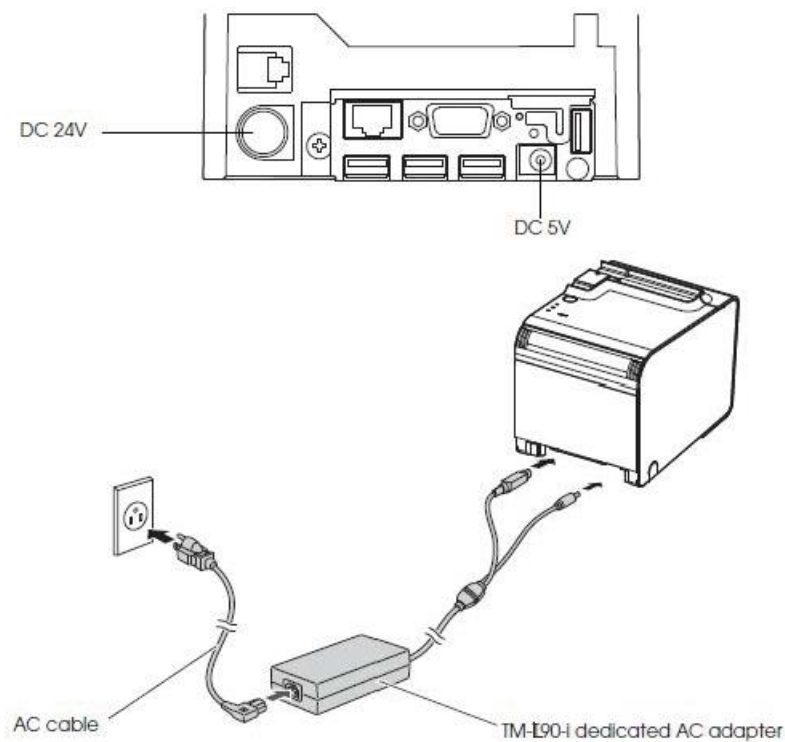


EPSON	KDS Single Station Quick Start Guide Page 3 of 20	111-38-URM-002 R2.50
--------------	---	-------------------------

2. Setting Up a Single Station KDS

Please follow the steps in order to setup and configure your Single Station KDS:

1. Unpack your printer and connect the AC Adapter to the back of the printer and a power outlet.



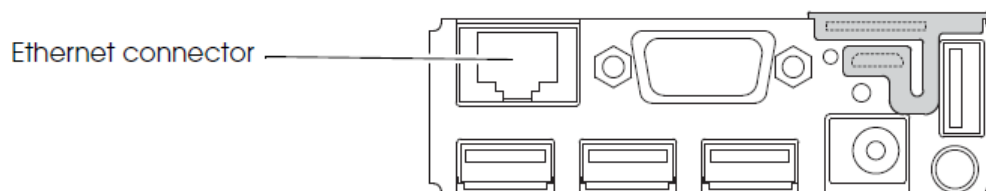
Picture 2.1

2. Connect an ethernet cable from the PC/laptop to the router/network switch.

Note: If your laptop is connected wirelessly to the same network as the printer you do not need to connect the ethernet cable from the laptop to the router/network switch.

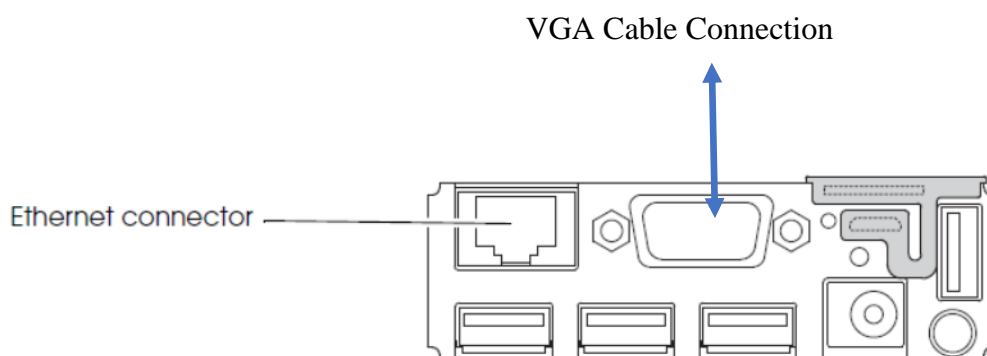
EPSON	KDS Single Station Quick Start Guide Page 4 of 20	111-38-URM-002 R2.50
--------------	---	-------------------------

3. Connect an ethernet cable from the printer to the same router/network switch:



Picture 2.3

4. Connect the VGA cable between the monitor and the printer.

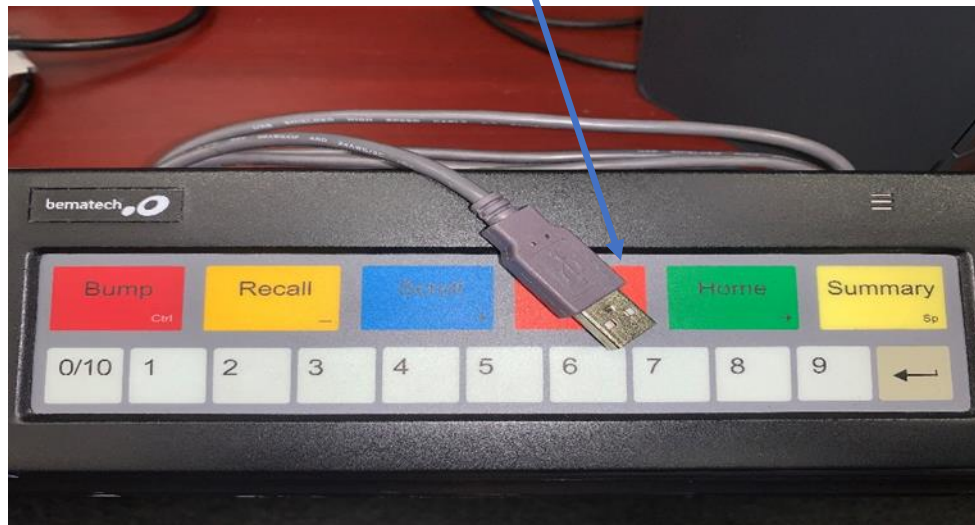
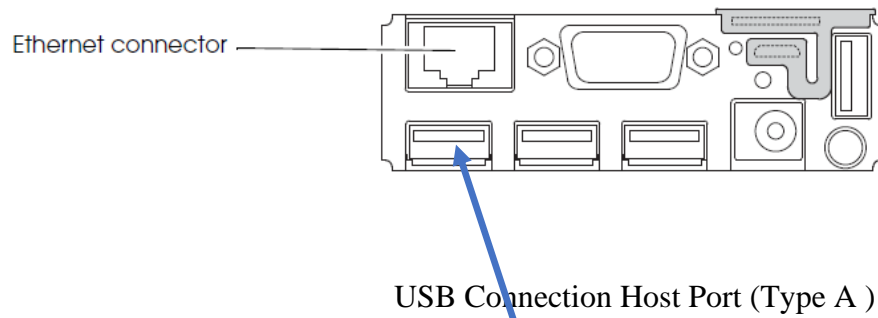


Picture 2.4

Note: If you are using a touchscreen monitor, use a USB cable to connect the monitor to one of the available USB Host (Type A) ports on the printer.

If you are using a touchscreen monitor, skip Step 5.

5. Connect the bump bar to the corresponding port on the printer.



Picture 2.5

6. Power on the printer. The KDS takes ~1 minute to boot up and will show a startup screen:



Picture 2.6

A brand new KDS printer will stay on this screen until the system is properly configured. A properly configured system will boot to the KDS order display grid.

3. Epson KDS Configuration Utility

The Epson KDS Configuration Utility lets you set up, customize, and manage the Epson Kitchen Display System. You can download the Epson KDS Configuration utility from the Epson support page:

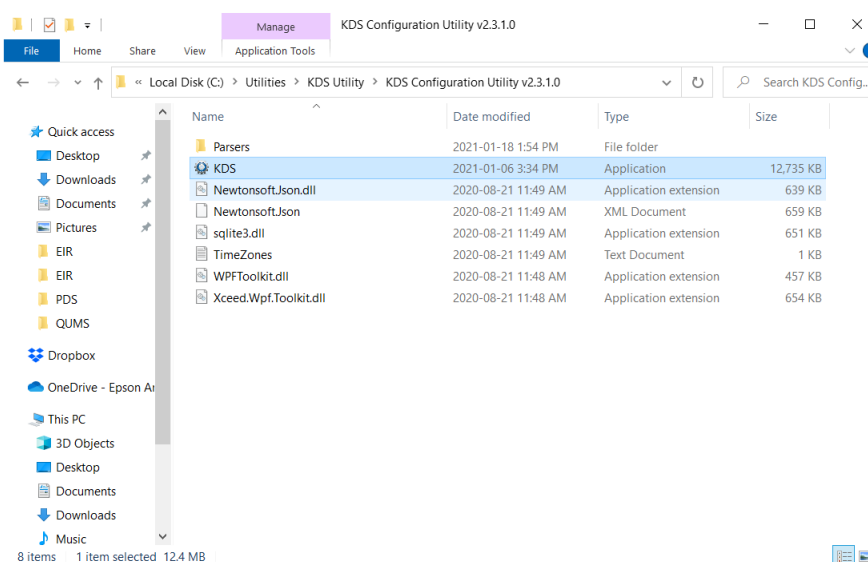
(https://epson.ca/Support/Point-of-Sale/OmniLink-Printers/Epson-TM-U220-i-KDS-with-VGA-or-COM/s/SPT_U220IKDS)

The same utility is used for all KDS printers. It is a standalone utility meaning that it doesn't require to be installed – simply copy it to a folder of your choosing.

Before you run the configuration utility, check the following:

- If you connected the system via Ethernet, make sure the LAN connection supports broadcasting throughout the network and that ports 3289/3290 are open for both TCP and UDP packets and port 80 is open for TCP packets.
- Disable any firewalls on the PC that will run the configuration Utility. This only needs to be done during the initial setup so that the Windows utility can properly discover the printer on the network.
- Confirm that the PC is connected to the same network as the KDS.

The Utility can be run by executing the KDS.exe application:



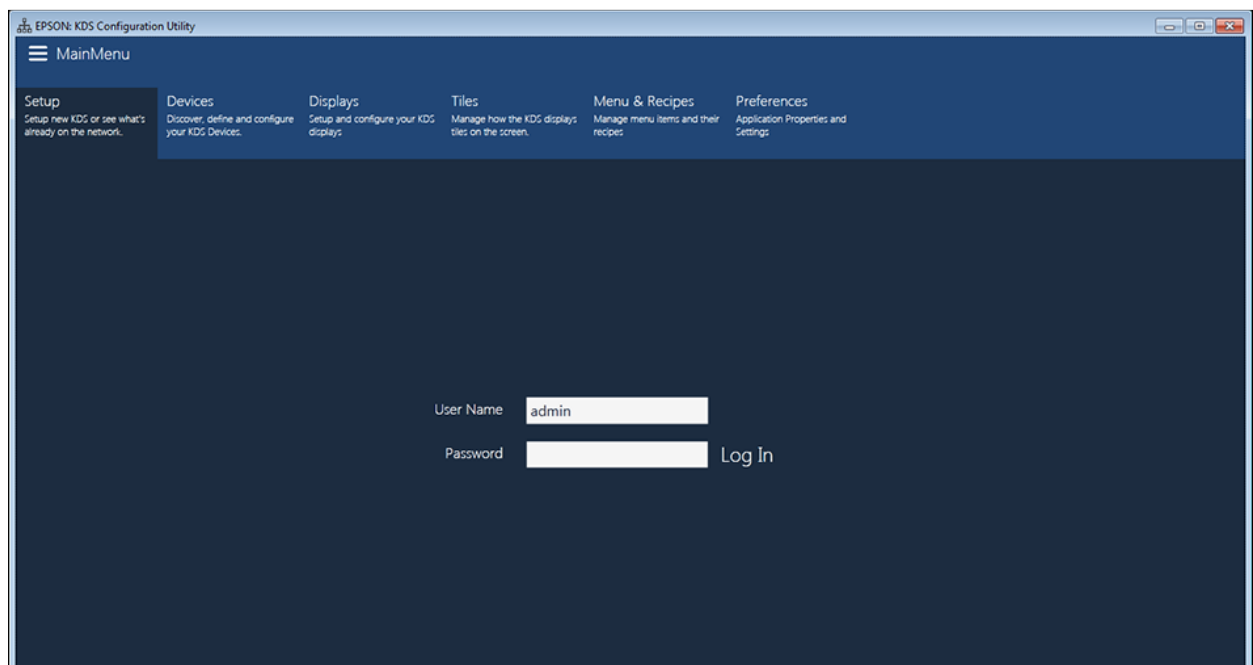
EPSON	KDS Single Station Quick Start Guide Page 8 of 20	111-38-URM-002 R2.50
--------------	---	-------------------------

4. Configuring the KDS using the Windows Utility

When you run the Epson KDS Configuration Utility for the first time, you can use the setup wizard to quickly detect and configure any available KDS devices.

1. Run the KDS Configuration Utility on the computer that is connected to your KDS network/ printer.

You will see this opening screen:

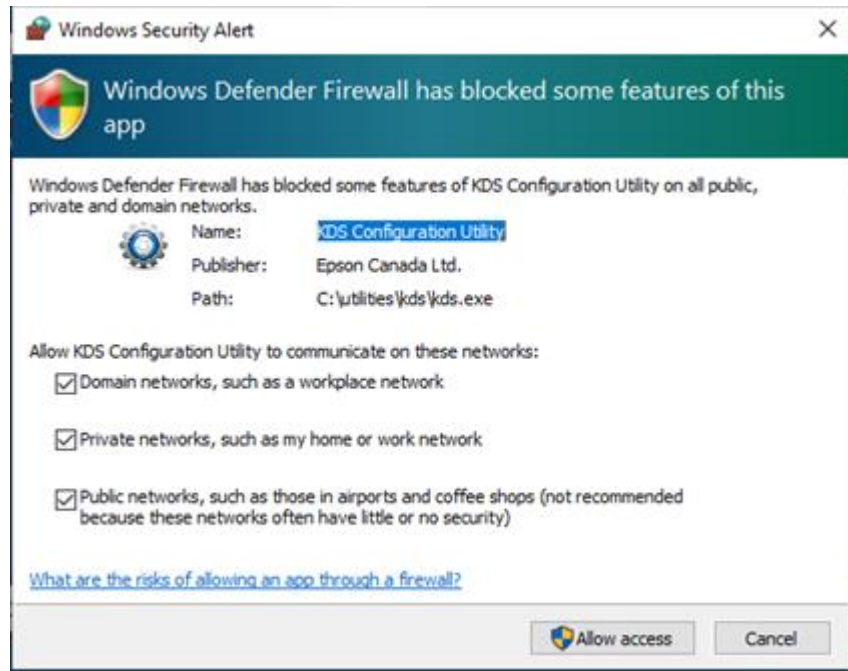


Picture 4.1.0

The default user name is “admin” and there isn’t a default password. So clicking Log In for the first time will allow you to log into the Utility.

EPSON	KDS Single Station Quick Start Guide Page 9 of 20	111-38-URM-002 R2.50
--------------	---	-------------------------

Note: When the utility discovers devices on the network, the firewall may prevent the discovery. If the following message is presented after logging into the application, you must “Allow access” for the utility to function. If you click cancel, the utility will not be able to run discovery or communicate with devices on the network. To enable discovery, go to firewall settings and make an exception for the configuration utility manually. If you are using third party firewall, consult the documentation on how to add an exception for the utility.



Picture 4.1.2

2. After logging in for the first time you will be presented with the following options:

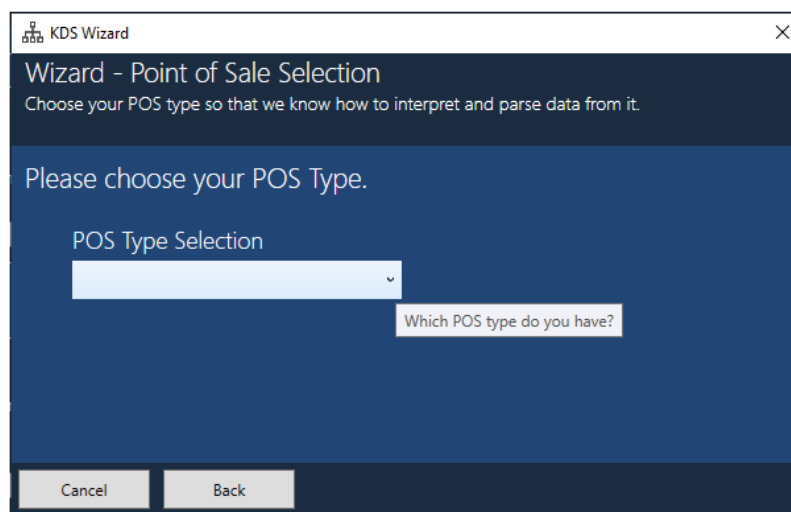


Picture 4.2

Click **Configure the system for the first time** and then click **Next**.

Note: Running the Configuration utility subsequent times will not start with the above Wizard. Please consult Appendix B for instructions on restarting the Setup Wizard.

3. Select your POS system from the list and click Next:



Picture 4.3

Note: If your POS does not appear in the list, you will need to contact your Reseller for guidance.

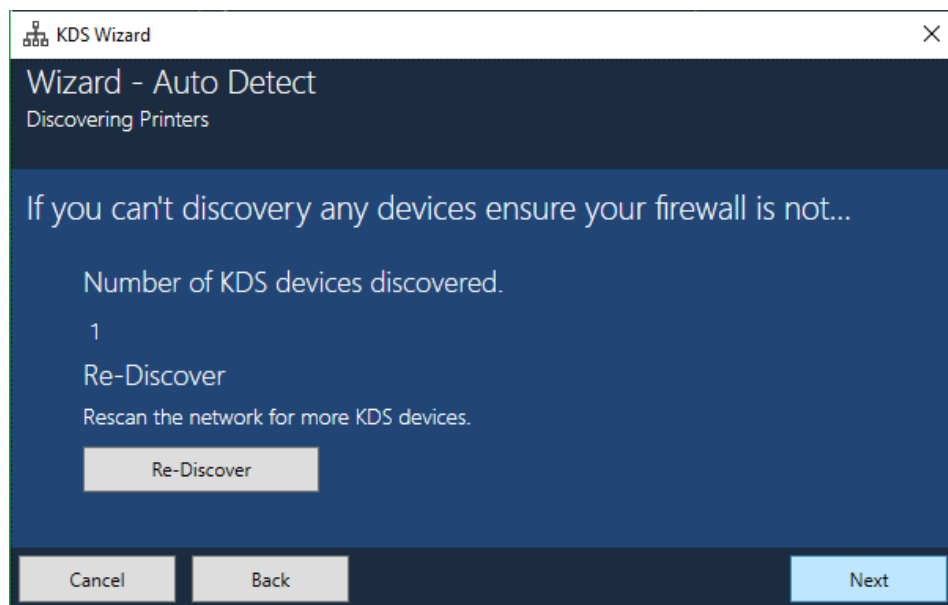
EPSON	KDS Single Station Quick Start Guide Page 11 of 20	111-38-URM-002 R2.50
--------------	--	-------------------------

4. Select **Do not configure IP settings for my devices** and click **Next**:



Picture 4.4

5. The utility will search for the KDS printer on your network and if found successfully will show a 1 under Number of KDS devices discovered:

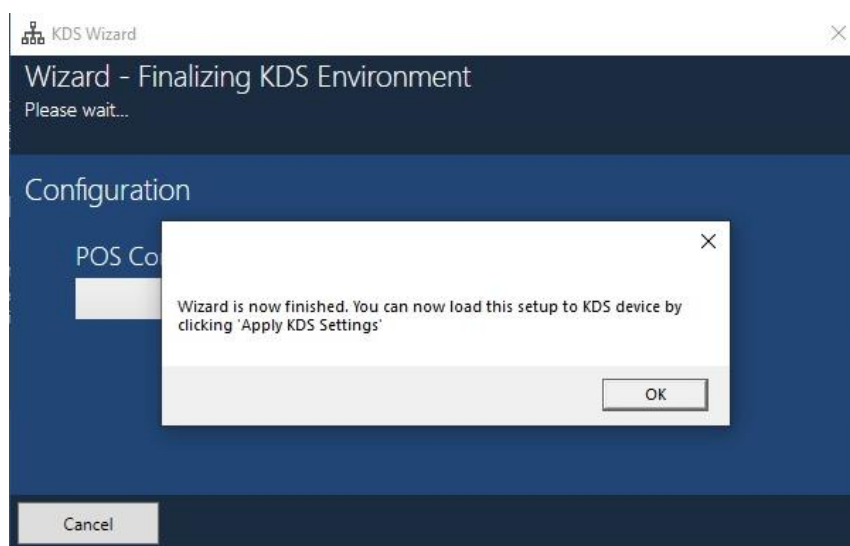


Picture 4.5

Click Next.

EPSON	KDS Single Station Quick Start Guide Page 12 of 20	111-38-URM-002 R2.50
--------------	--	-------------------------

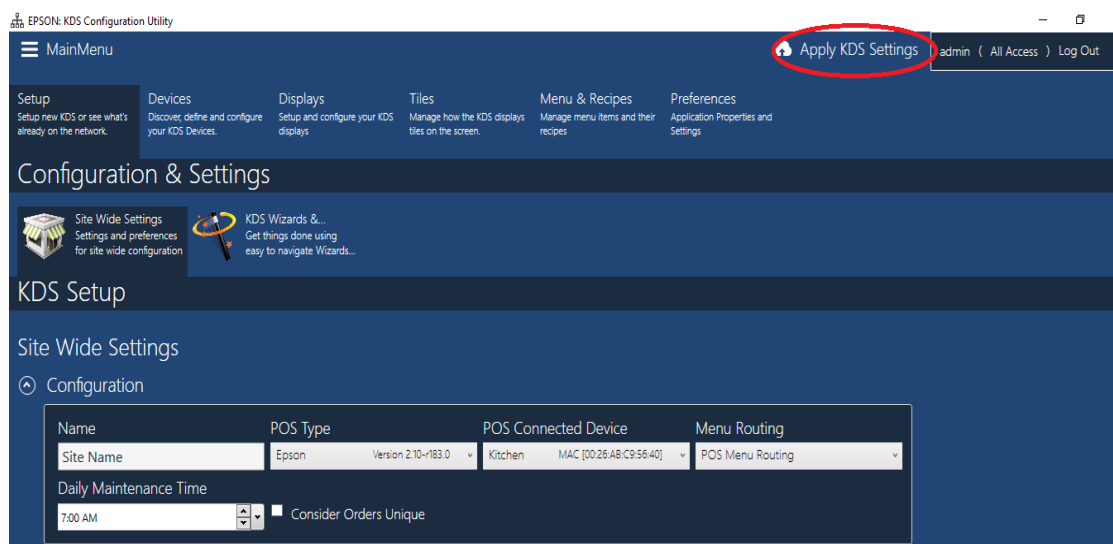
- The wizard is now finished and will load your KDS device to the configuration:



Picture 4.6

A default configuration and Display/Tile layout will automatically be added to your KDS printer and these settings can be used as is. Select OK.

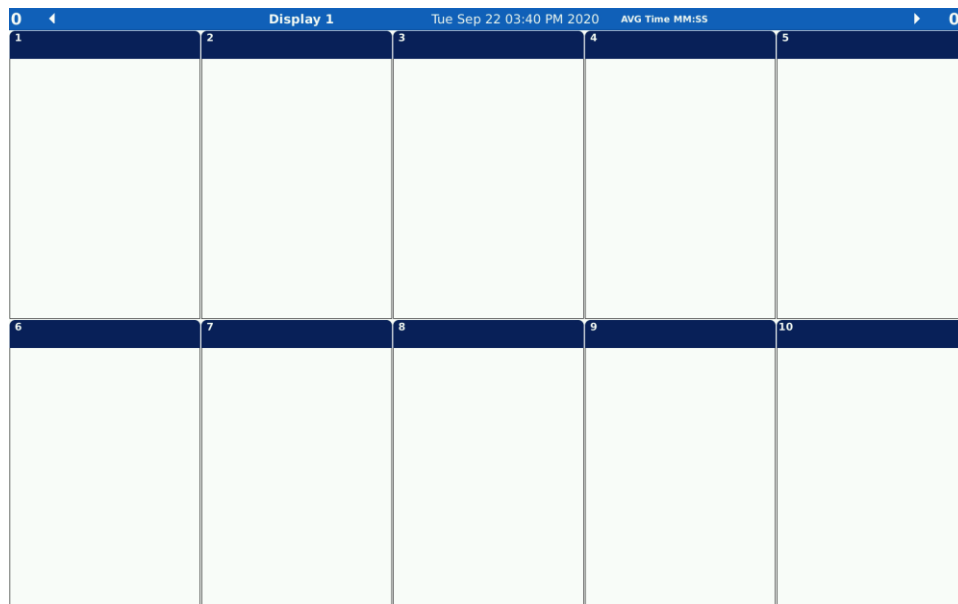
- If using a touchscreen it will be automatically detected by the KDS and a request to calibrate on first power up.
- Click “Apply KDS Settings” to upload the configuration to the KDS printer:



Picture 4.8

EPSON	KDS Single Station Quick Start Guide Page 13 of 20	111-38-URM-002 R2.50
--------------	--	-------------------------

9. The KDS will take the configuration, reset and show the startup screen and then then show the following screen indicating that it is ready for orders:


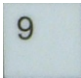


Picture 4.9

10. Send orders to the KDS using your POS and the orders will appear on screen. Orders can be bumped off by pressing the corresponding tile number on the bump bar. If using a touchscreen, orders can be bumped off by pressing in the tile header area.

Appendix A

Bumping an Entire Order

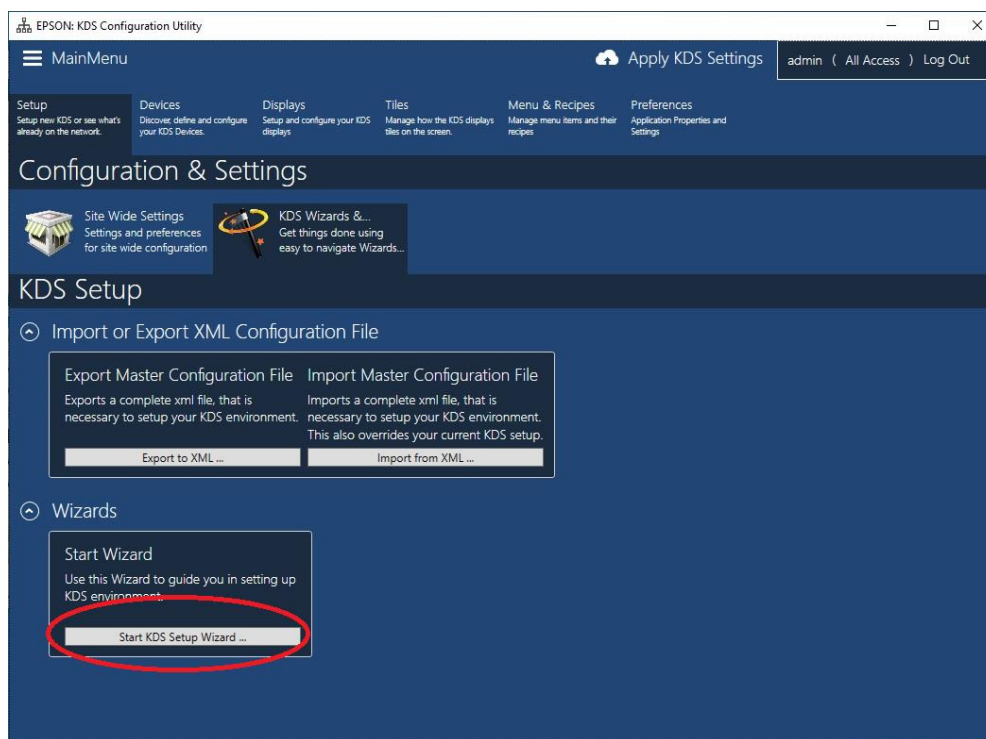
Pressing the tile number  -  to bump the order associated with that tile.

To bump order 10 – 19 you need to press the 0/10 key (which selects 10) and then 0-9 to select the second digit.

Note: There are other keys for other functionality on the bump bar that is beyond the scope of this guide.

Appendix B

The KDS Wizard only starts automatically for the first instance of running the KDS Utility. Subsequent attempts will simply load to the existing configuration. If you wish to start the Wizard again you will need to go to the Setup Menu, select KDS Wizards... and then click “Start KDS Setup Wizard”:



Picture B1

EPSON	KDS Single Station Quick Start Guide Page 15 of 20	111-38-URM-002 R2.50
--------------	--	-------------------------

Appendix C

This chapter briefly describes some of the more common KDS functionality that can be configured. The details of these items are beyond the scope of this guide.

Setup Configuration

1. Click on the **Setup** tab at the top of the screen.

The screenshot displays the EPSON KDS Configuration Utility web interface. The top navigation bar includes a 'MainMenu' icon, a cloud icon for 'Apply KDS Settings', and a user profile 'admin' with 'All Access' and 'Log Out' options. Below the navigation bar, there are six tabs: 'Setup' (selected), 'Devices', 'Displays', 'Tiles', 'Menu & Recipes', and 'Preferences'. The 'Setup' tab is active, showing 'Configuration & Settings' and 'KDS Setup' sections. Under 'Configuration', there is a table with columns: Name, POS Type, POS Connected Device, Menu Routing, and Daily Maintenance Time. The table contains one row with values: Site Name, Epson, Version 2.10-r183.0, Device 2, MAC [00:26:AB:C9:56:40], POS Menu Routing, and 7:00 AM. Below the table are two checkboxes: 'Consider Orders Unique' and 'Independent Displays'. Under 'Time Settings', there are fields for 'Time Zone' and 'NTP Time Server'. Under 'Time Setting Actions', there are two buttons: 'Set Current KDS Time' and 'Set Time Zone & Time'.

Name	POS Type	POS Connected Device	Menu Routing	Daily Maintenance Time
Site Name	Epson Version 2.10-r183.0	Device 2 MAC [00:26:AB:C9:56:40]	POS Menu Routing	7:00 AM

☐ Consider Orders Unique ☐ Independent Displays

Time Zone: [] NTP Time Server: []

Time Setting Actions: [Set Current KDS Time] [Set Time Zone & Time]

Picture C1

POS Type – Here you can select the POS that is sending orders so the KDS can parse them.

Consider Orders Unique – Any appends to an order will cause that order to show up in its own tile.

Set Current KDS Time – Allows the clock on the KDS display to be set to the same time as the PC.

Device Configuration

1. Click on the **Devices** tab at the top of the screen.

The screenshot shows the EPSON KDS Configuration Utility window. The 'Devices' tab is selected in the top navigation bar. Below the navigation bar, there's a 'Devices' section showing 'Device 1' with its IP address (192.168.1.161), MAC address (00:26:AB:C9:56:40), and serial number (SUPF000065). A green 'POS Attached' badge is visible next to the device name. Below this, the 'Device Configuration' section is expanded, showing three sub-sections: 'Basic Information', 'Configuration', and 'Printing Functions'. The 'Basic Information' section displays fields for KDS Device Name (TM-L90), Device Version (2.20KDS_200116), KDS Version (2.20-r864.0), Device's Serial Number (SUPF000065), and Configuration Time Stamp (2020-09-22 20:23:12). The 'Configuration' section shows fields for Name (Device 1), Description, IP Address (192.168.1.161), and MAC Address (00:26:AB:C9:56:40), with a radio button for 'Attached to POS'. The 'Printing Functions' section has three checkboxes: 'Print Chit', 'Print Item on Bump', and 'Print Tile on Bump', all of which are currently unchecked.

KDS Device Name	Device Version	KDS Version	Device's Serial Number	Configuration Time Stamp
TM-L90	2.20KDS_200116	2.20-r864.0	SUPF000065	2020-09-22 20:23:12

Name	Description	IP Address	MAC Address	
Device 1		192.168.1.161	00:26:AB:C9:56:40	<input type="radio"/> Attached to POS

Printing Functions		
<input type="checkbox"/> Print Chit	<input type="checkbox"/> Print Item on Bump	<input type="checkbox"/> Print Tile on Bump

Picture C2

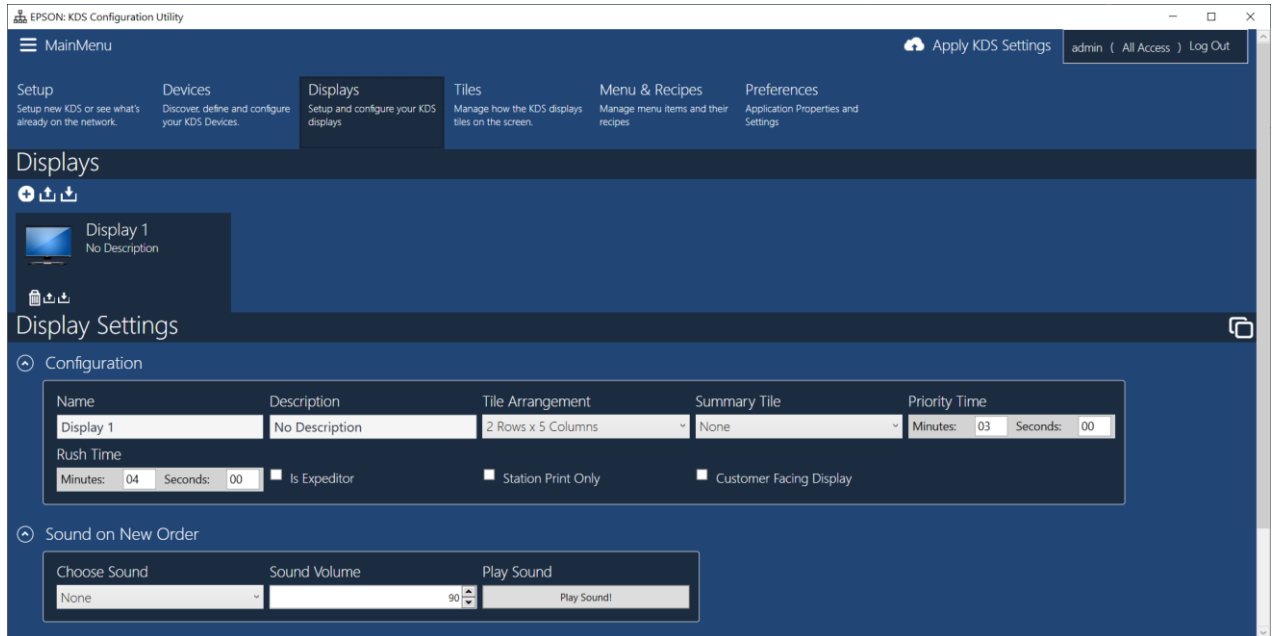
Print Chit – When enabled the printer will print the incoming print job/chit from the POS.

Print Item on Bump – When enabled the printer will print a label for each item that is bumped.

Print Tile on Bump – When enabled the printer will print a label for each tile/order that is bumped.

Display Configuration

1. Click on the **Displays** tab at the top of the screen.



Picture C3

Name – Gives the display a name that is visible at the top of the KDS screen.

Tile Arrangement – Allows you to configure the tile grid that is displayed on the KDS screen.

Summary Tile – Allows you to configure a tile as a Summary tile for menu items.

(Menu items need to be entered in the Menu & Recipes and match exactly.)

Priority Time – The amount of time before the order header will change to the priority color.

Rush Time – The amount of time before the order header will change to the rush color.

Is Expeditor – Configure a station as an Expeditor – not relevant for Single Station.

Station Print Only – Configure the station to automatically bump and print the order – thus a screen does not need to be attached.

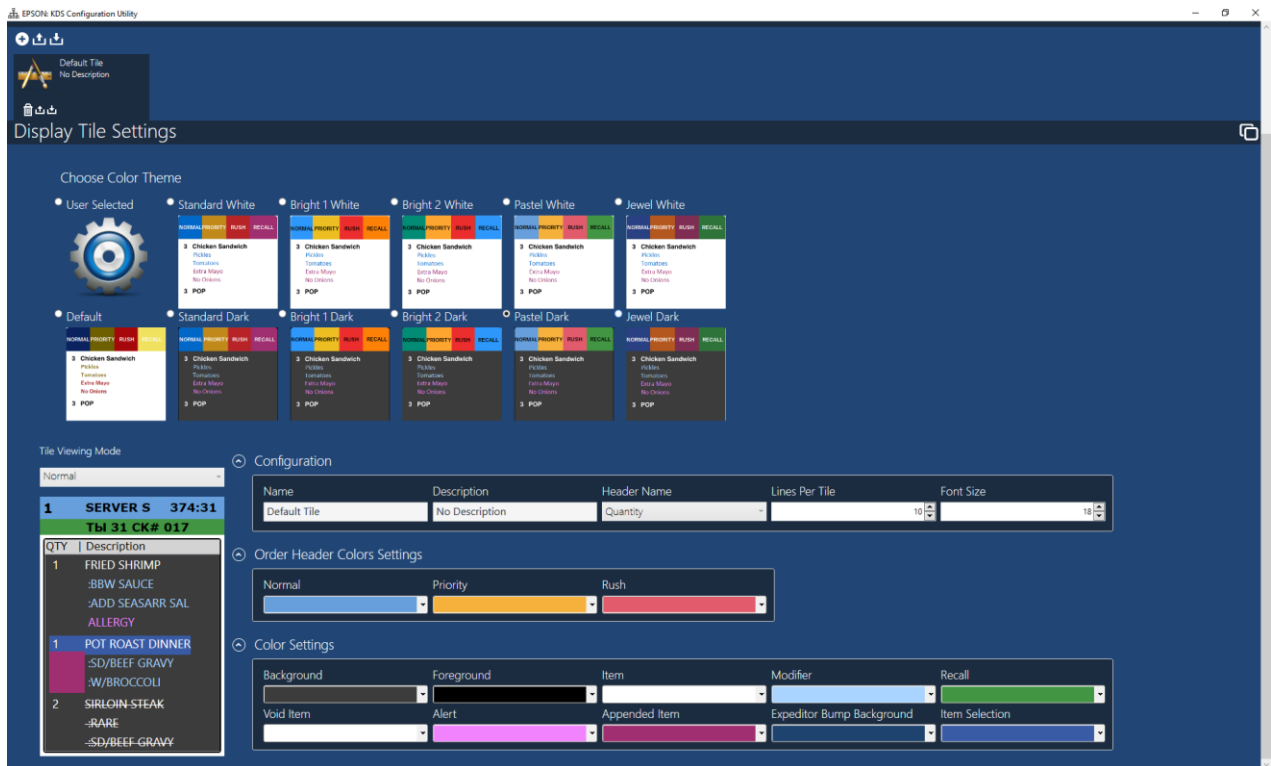
Customer Facing Display – Configure a station as an Order status screen for customers – not relevant for Single Station.

Sound on New Order – Choose a sound to be played on an incoming order to the KDS from an attached USB->Audio device.

EPSON	KDS Single Station Quick Start Guide Page 18 of 20	111-38-URM-002 R2.50
--------------	--	-------------------------

Tile Configuration

1. Click on the **Tiles** tab at the top of the screen.



Picture C4

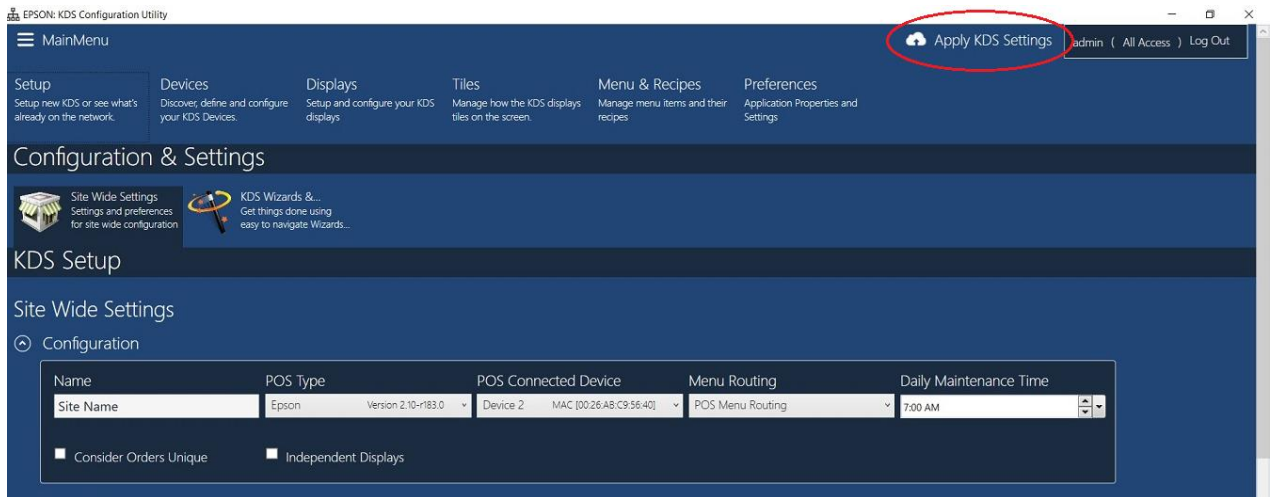
Lines Per Tile – Configure the number of order lines displayed in each tile.

Font Size – Adjust the font size for the order lines displayed in each tile.

Colors – The various colors on the display can be customized.

Apply KDS Settings

1. After making any configuration changes, simply click “Apply KDS Settings” to have them uploaded to the KDS:



Picture C5