



111-38-URM-003

---

KDS Multi Station

---

Quick Start Guide

### About this Guide

This guide contains instructions for a new user to setup, configure, and use the Epson KDS in the fewest steps. It is targeted towards the Multi Station Epson KDS connected to the POS via ethernet and assumes that the POS is already supported by the Epson KDS. The Epson KDS is very versatile – able to be customized in many ways to meet the specific needs of the individual display stations and entire kitchen. This guide describes one such use case – setting up a 2 display system with one station being the Prep Display and the other being the Expeditor. This guide is applicable to:

KDS FW v2.50 and above

KDS Windows Configuration Utility v2.5.0.0 and above

EPSON is a registered trademark and EPSON Exceed Your Vision is a registered logomark of Seiko Epson Corporation. All other product and brand names are trademarks and/or registered trademarks of their respective companies. Epson disclaims any and all rights in these marks. Copyright 2022 Seiko Epson Corporation.

<b>EPSON</b>	KDS Multi Station Quick Start Guide Page 1 of 27	111-38-URM-003 R2.50
--------------	--	-------------------------

## Table of Contents

<b>1. System Requirements.....</b>	<b>3</b>
<b>2. Setting Up a Multi-Station KDS System .....</b>	<b>4</b>
<b>3. Epson KDS Configuration Utility .....</b>	<b>9</b>
<b>4. Configuring the KDS using the Windows Utility .....</b>	<b>10</b>
<b>Appendix A .....</b>	<b>22</b>
Bumping an Entire Order .....	22
<b>Appendix B.....</b>	<b>22</b>
<b>Appendix C.....</b>	<b>23</b>
Setup Configuration .....	23
Device Configuration.....	24
Display Configuration.....	25
Tile Configuration .....	26
Apply KDS Settings .....	27

# 1. System Requirements

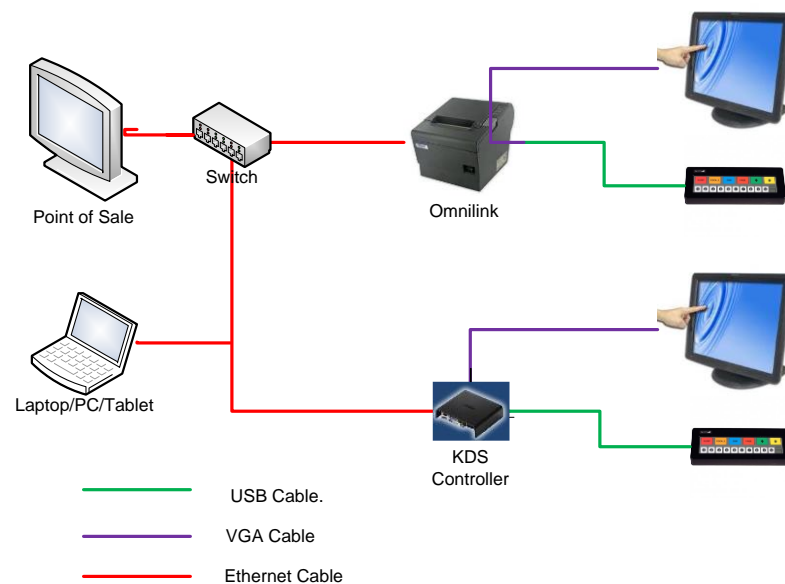
Setting up a Multi Station KDS for this guide requires the following equipment:

- Any 2 KDS devices from the following:
  - U220-i, T88V-i, or L90 LFC-i printers (with VGA) containing KDS software.
  - KD-IB01 KDS Controller expansion module.

This guide assumes an L90-i LFC printer and a KD-IB01 Controller.

- An Epson KDS supported POS terminal connected to the printer via ethernet through a Local Area Network (LAN). By default the printer is DHCP-enabled and it is assumed the network is capable of providing a DHCP IP to the printer.
- 2 Logic Controls KB1700 USB bump bars (Legend Sheet D) connected directly to the printer and the controller. Touchscreen monitors can be connected instead of the bump bars.
- 2 1080p HD monitors (or touchscreens) connected directly to the printer and the controller.
- A Windows 8.1/10 PC/laptop for running the Windows KDS Configuration Utility.
- A network switch/router that all devices can be connected to on a local network.

## Multi Station Setup:

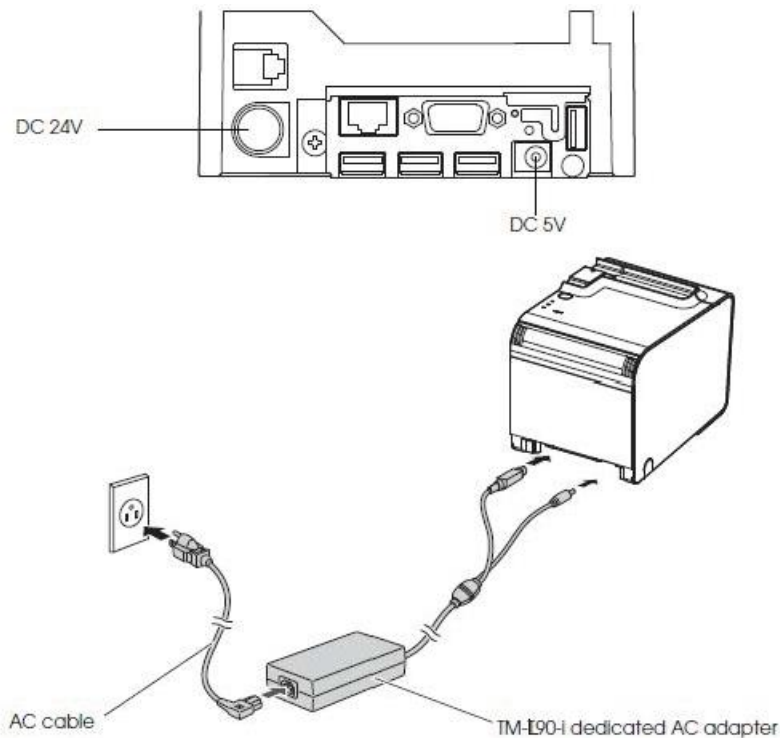


<b>EPSON</b>	KDS Multi Station Quick Start Guide Page 3 of 27	111-38-URM-003 R2.50
--------------	--	-------------------------

## 2. Setting Up a Multi-Station KDS System

Please follow the steps in order to setup and configure your Multi Station KDS:

1. Unpack your printer and connect the AC Adapter to the back of the printer and a power outlet.



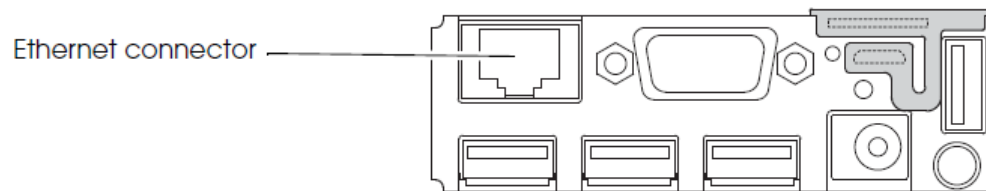
**Picture 2.1**

2. Connect an ethernet cable from the PC/laptop to the router/network switch.

**Note:** If your laptop is connected wirelessly to the same network as the printer you do not need to connect the ethernet cable from the laptop to the router/network switch.

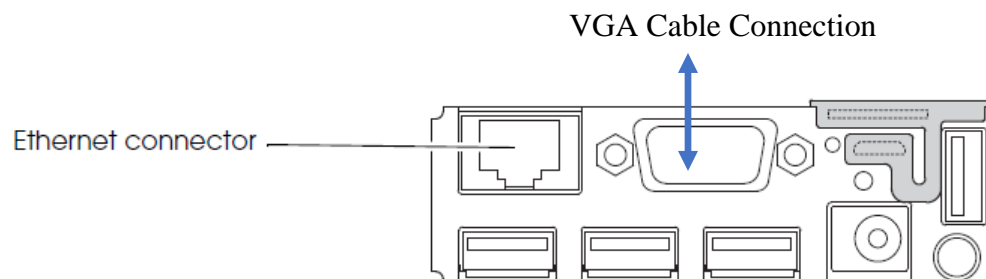
<b>EPSON</b>	KDS Multi Station Quick Start Guide Page 4 of 27	111-38-URM-003 R2.50
--------------	--	-------------------------

3. Connect an ethernet cable from the printer to the same router/network switch:



**Picture 2.3**

4. Connect the VGA cable between the monitor and the printer.

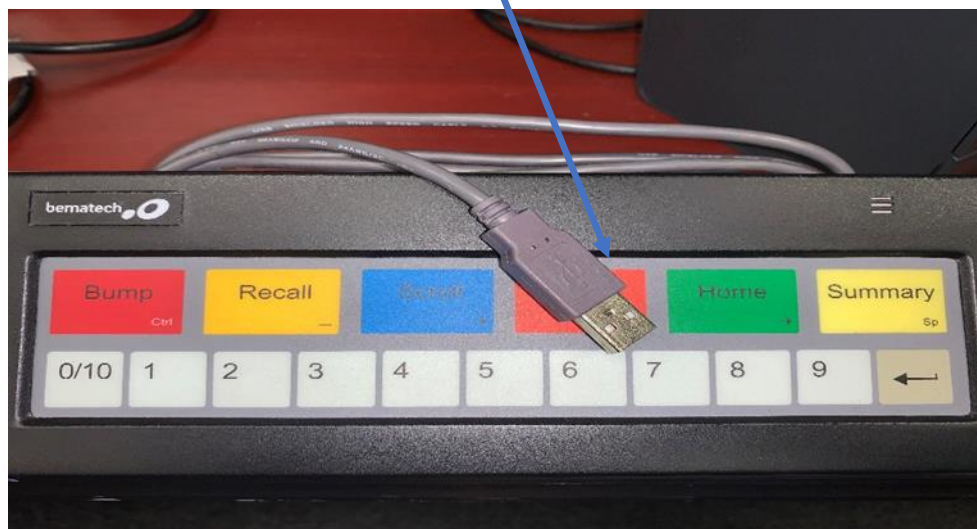
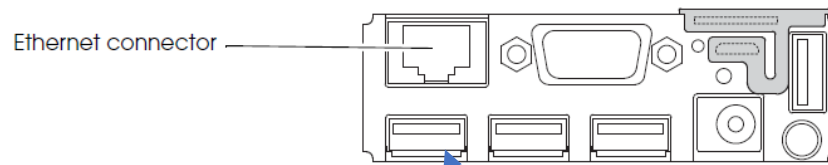


**Picture 2.4**

**Note:** If you are using a touchscreen monitor, use a USB cable to connect the monitor to one of the available USB Host (Type A) ports on the printer.

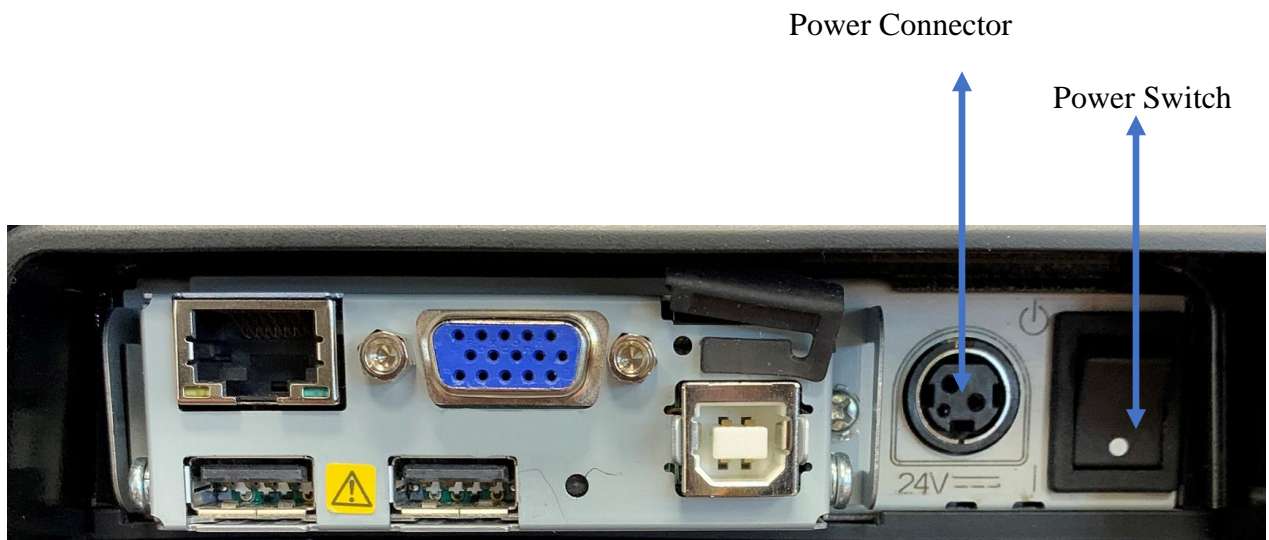
If you are using a touchscreen monitor, skip Step 5.

5. Connect the bump bar to the corresponding port on the printer.



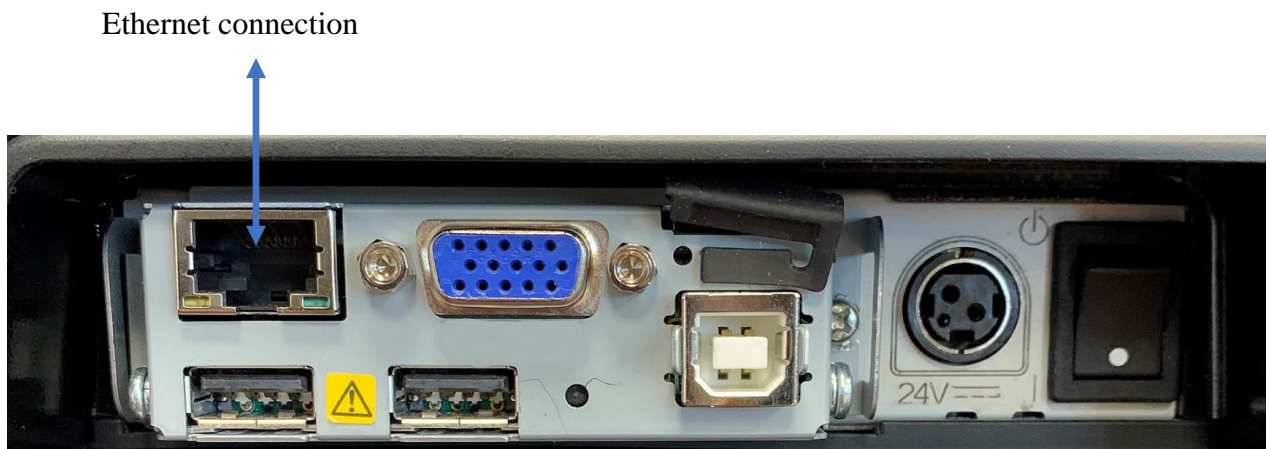
**Picture 2.5**

6. Connect the KD-IB01 KDS controller box power adapter.



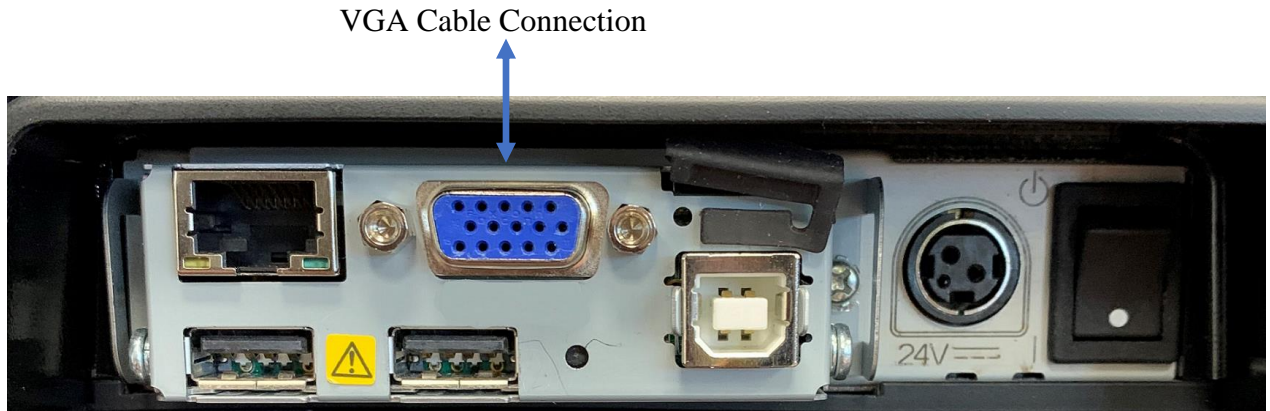
Picture 2.6

7. Connect an ethernet cable to the KDS controller and attach the other end to the network switch.



Picture 2.7

8. Connect a VGA cable to the VGA port on the KDS controller and the other end to your other monitor.



**Picture 2.8**

9. Power on the printer and controller. The KDS devices takes ~1 minute to boot up and will show the startup screen:



**Picture 2.9**

Note each display should have their own unique IP from the DHCP server. A brand new KDS printer will stay on this screen until the system is properly configured. A properly configured system will boot to the KDS order display grid.

<b>EPSON</b>	KDS Multi Station Quick Start Guide Page 8 of 27	111-38-URM-003 R2.50
--------------	--	-------------------------



### 3. Epson KDS Configuration Utility

The Epson KDS Configuration Utility lets you set up, customize, and manage the Epson Kitchen Display System. You can download the Epson KDS Configuration utility from the Epson support page:

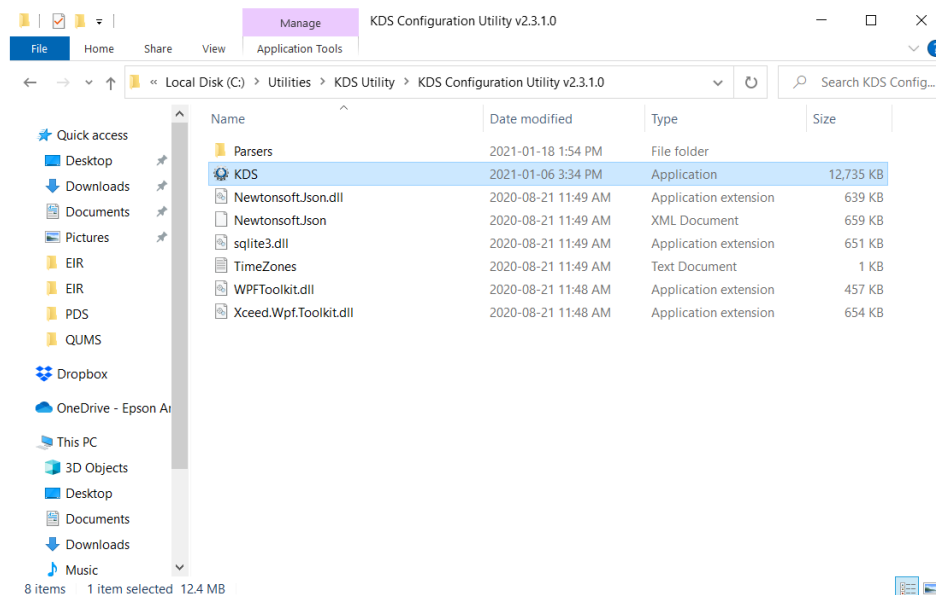
([https://epson.ca/Support/Point-of-Sale/OmniLink-Printers/Epson-TM-U220-i-KDS-with-VGA-or-COM/s/SPT\\_U220IKDS](https://epson.ca/Support/Point-of-Sale/OmniLink-Printers/Epson-TM-U220-i-KDS-with-VGA-or-COM/s/SPT_U220IKDS))

The same utility is used for all KDS printers. It is a standalone utility meaning that it doesn't require to be installed – simply copy it to a folder of your choosing.

Before you run the configuration utility, check the following:

- If you connected the system via Ethernet, make sure the LAN connection supports broadcasting throughout the network and that ports 3289/3290 are open for both TCP and UDP packets and port 80 is open for TCP packets.
- Disable any firewalls on the PC that will run the configuration Utility. This only needs to be done during the initial setup so that the Windows utility can properly discover the printer on the network.
- Confirm that the PC is connected to the same network as the KDS.

The Utility can be run by executing the KDS.exe application:

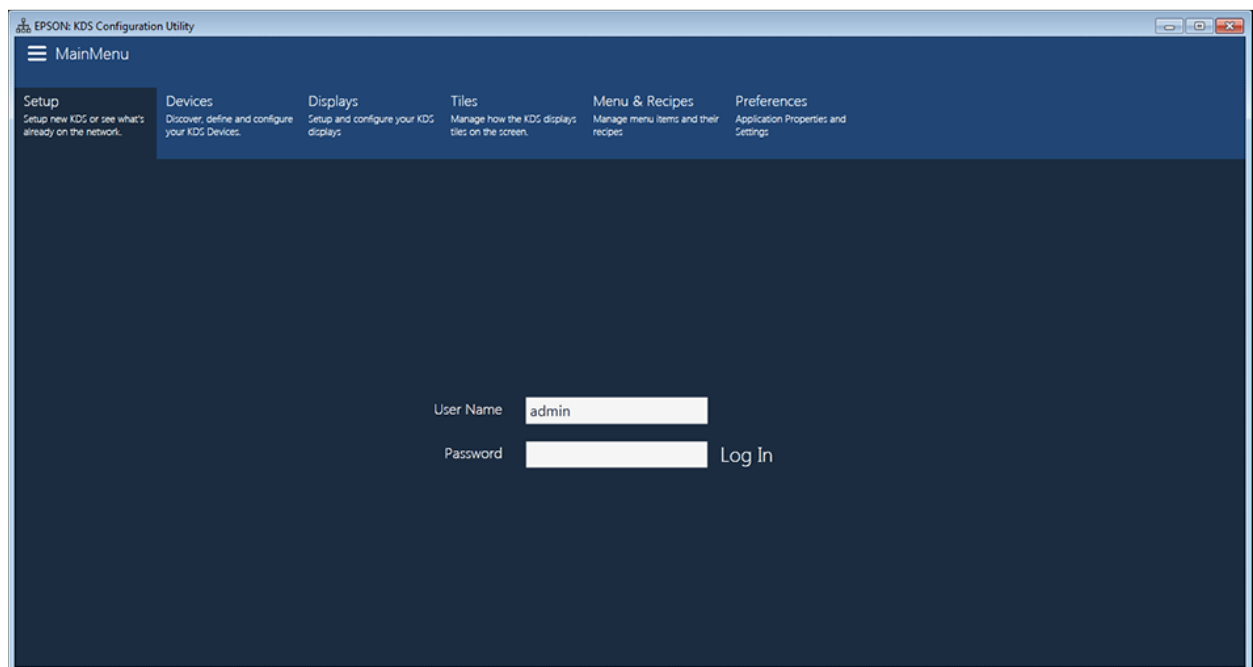


## 4. Configuring the KDS using the Windows Utility

When you run the Epson KDS Configuration Utility for the first time, you can use the setup wizard to quickly detect and configure any available KDS devices.

1. Run the KDS Configuration Utility on the computer that is connected to your KDS network/ printer.

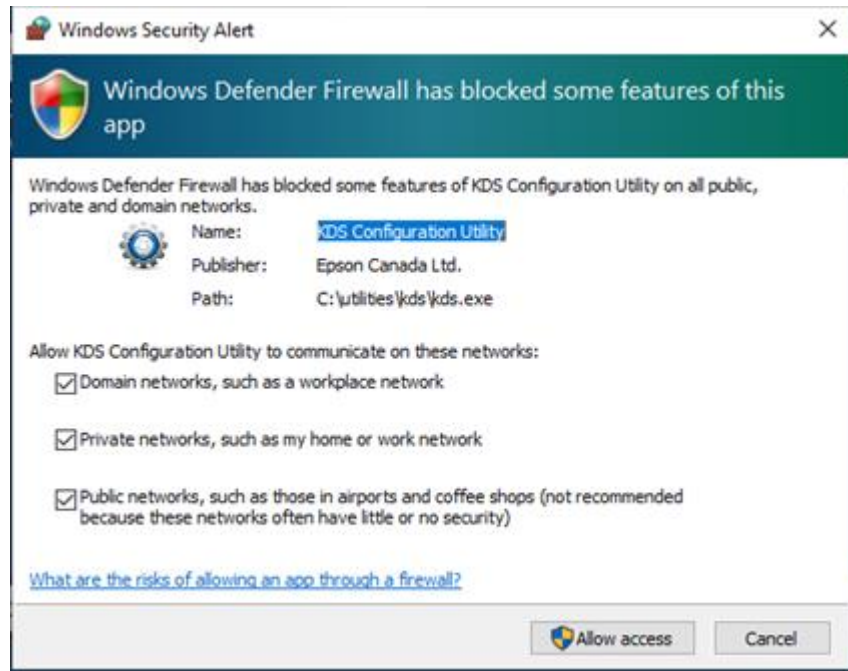
You will see this opening screen:



**Picture 4.1.0**

The default user name is “admin” and there isn’t a default password. So clicking Log In for the first time will allow you to log into the Utility.

**Note:** When the utility discovers devices on the network, the firewall may prevent the discovery. If the following message is presented after logging into the application, you must “Allow access” for the utility to function. If you click cancel, the utility will not be able to run discovery or communicate with devices on the network. To enable discovery, go to firewall settings and make an exception for the configuration utility manually. If you are using third party firewall, consult the documentation on how to add an exception for the utility.



**Picture 4.1.1**

2. After logging in for the first time you will be presented with the following options:

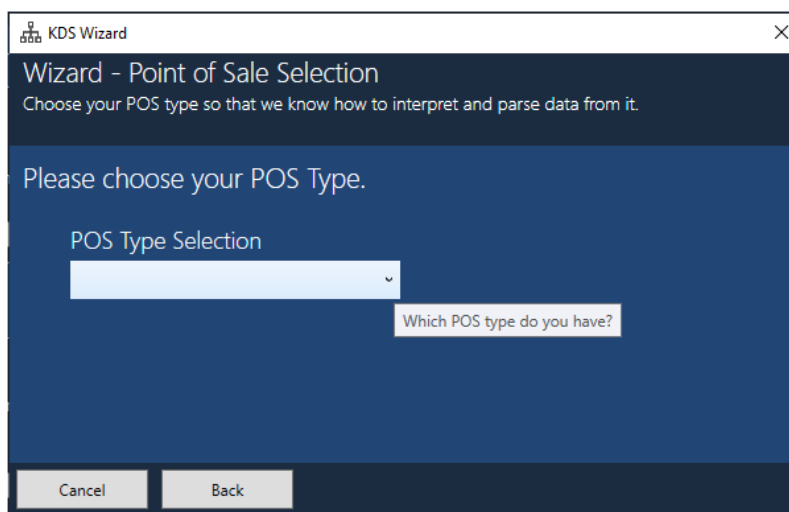


**Picture 4.2**

Click **Configure the system for the first time** and then click **Next**.

**Note:** Running the Configuration utility subsequent times will not start with the above Wizard. Please consult Appendix B for instructions on restarting the Setup Wizard.

3. Select your POS system from the list and click Next:



**Picture 4.3**

**Note:** If your POS does not appear in the list, you will need to contact your Reseller for guidance.

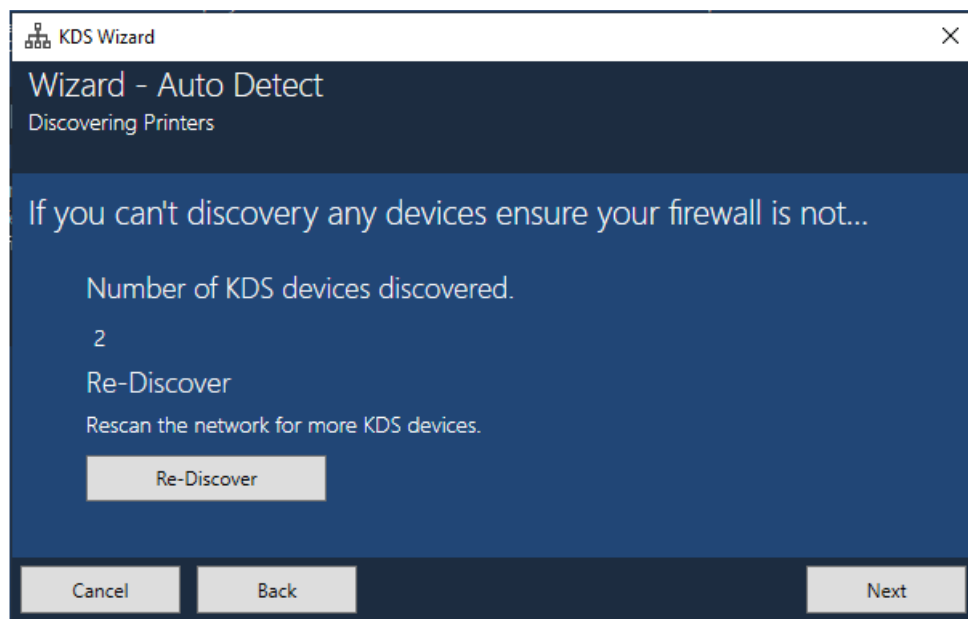
<b>EPSON</b>	KDS Multi Station Quick Start Guide Page 12 of 27	111-38-URM-003 R2.50
--------------	---	-------------------------

4. Select **Do not configure IP settings for my devices** and click **Next**:



**Picture 4.4**

5. The utility will search for the KDS printer on your network and if found successfully will show a 2 under Number of KDS devices discovered:

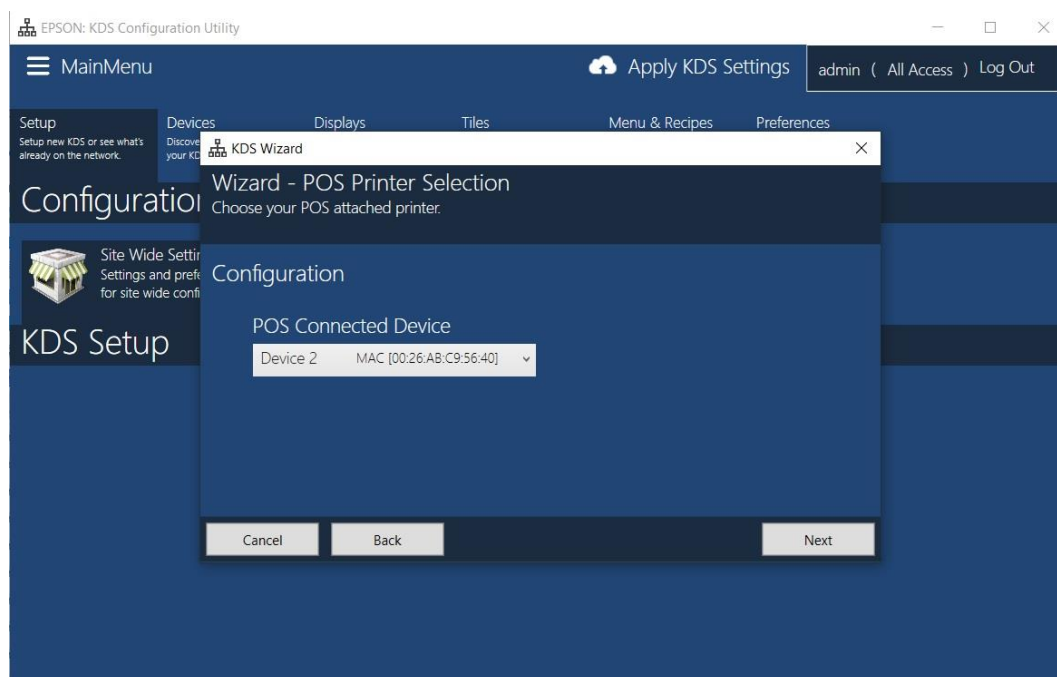


**Picture 4.5**

Click Next.

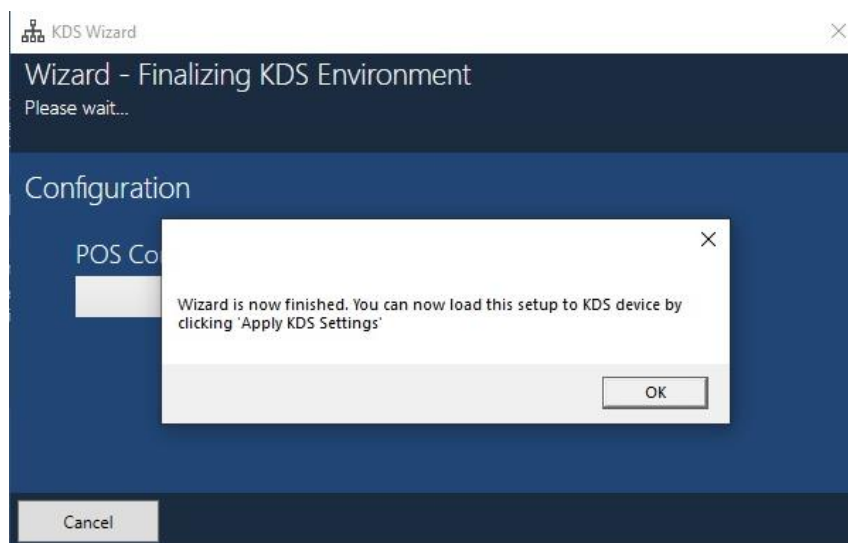
<b>EPSON</b>	KDS Multi Station Quick Start Guide Page 13 of 27	111-38-URM-003 R2.50
--------------	---	-------------------------

6. The utility now asks which device is connected to the POS. Select the printer which can be identified by the MAC address. Note that this could be Device 1 or Device 2 depending on which was found 1<sup>st</sup> in the search.



**Picture 4.6**

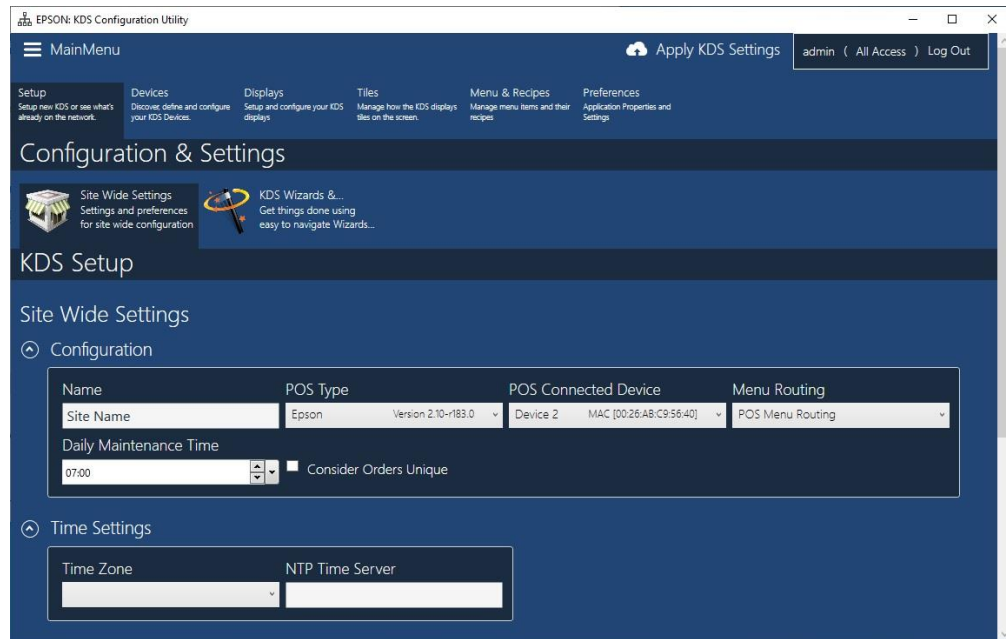
7. The wizard is now finished and will load your KDS devices to the configuration:



**Picture 4.7**

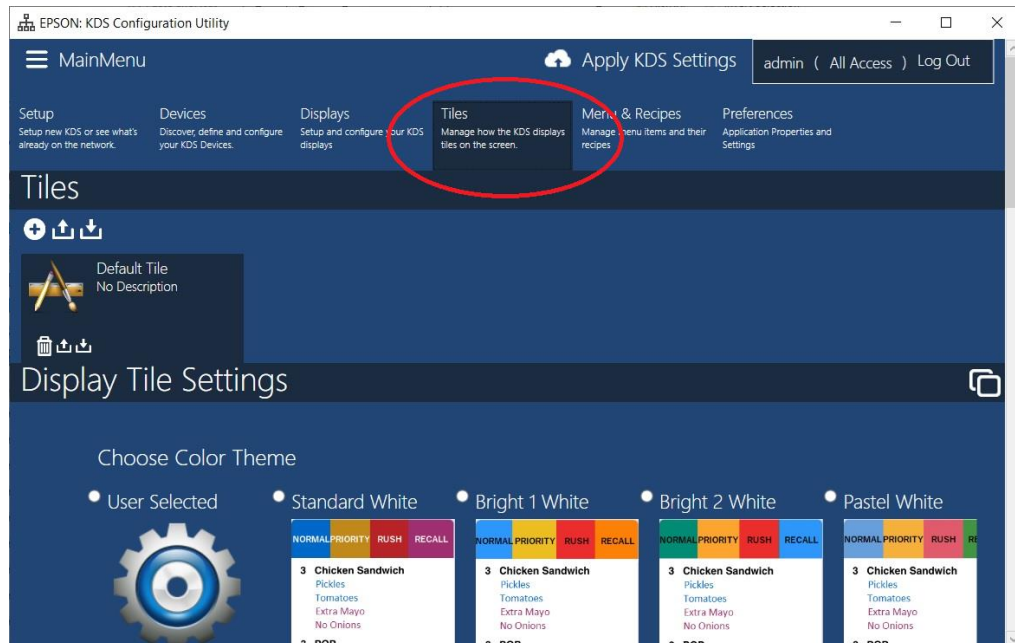
<b>EPSON</b>	KDS Multi Station Quick Start Guide Page 14 of 27	111-38-URM-003 R2.50
--------------	---	-------------------------

Select OK, which will take you to the main screen:



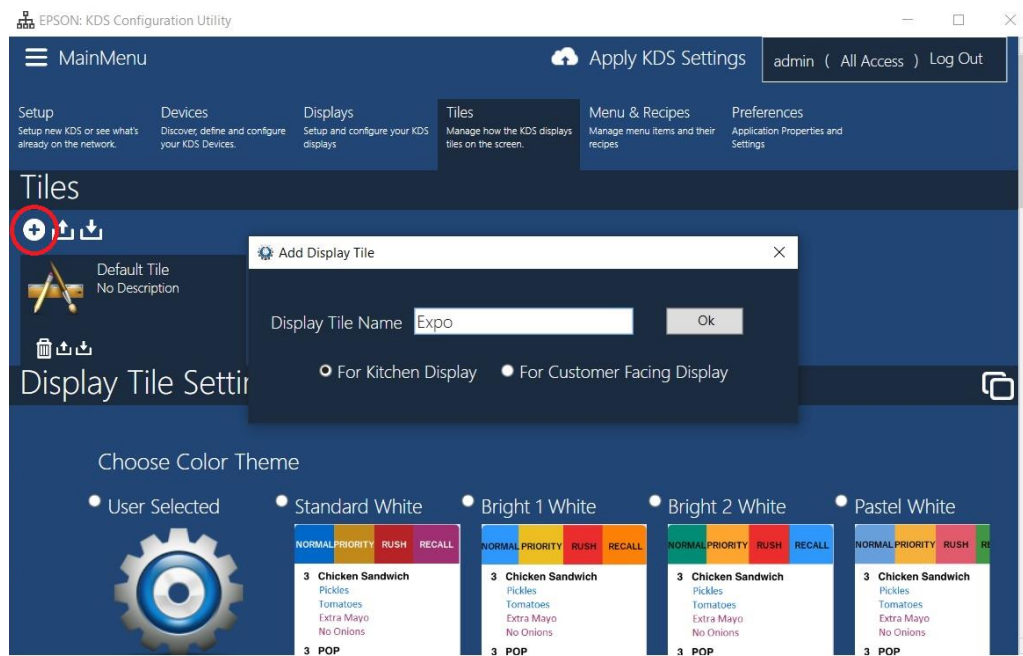
Picture 4.7.1

8. Select the Tiles configuration:



Picture 4.8

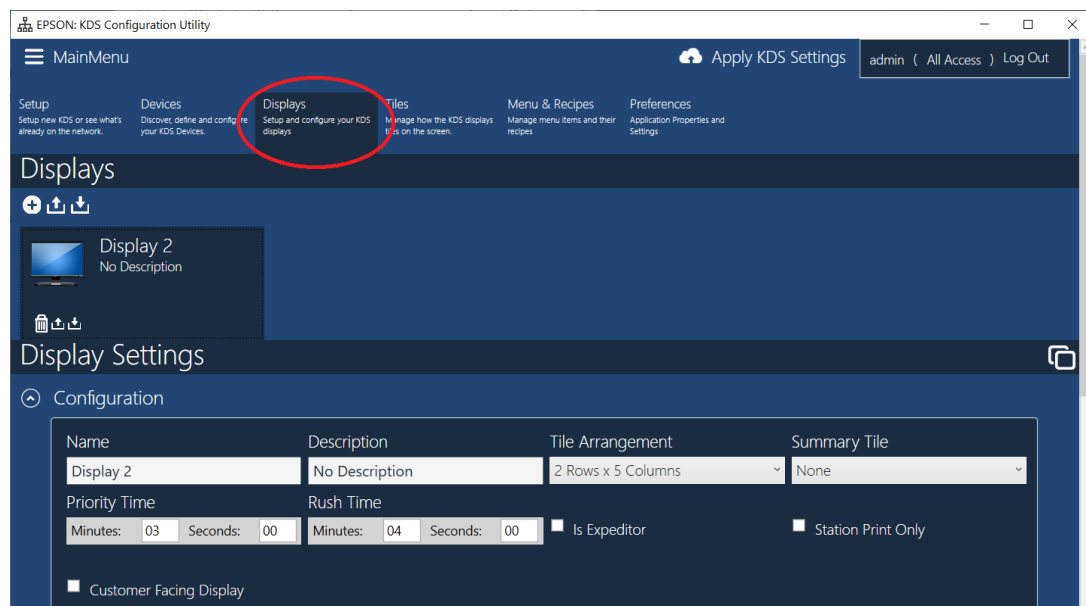
- Click the + icon to Add a new display Tile and name it “Expo”.



Picture 4.9

Click OK.

- Select the Displays configuration:

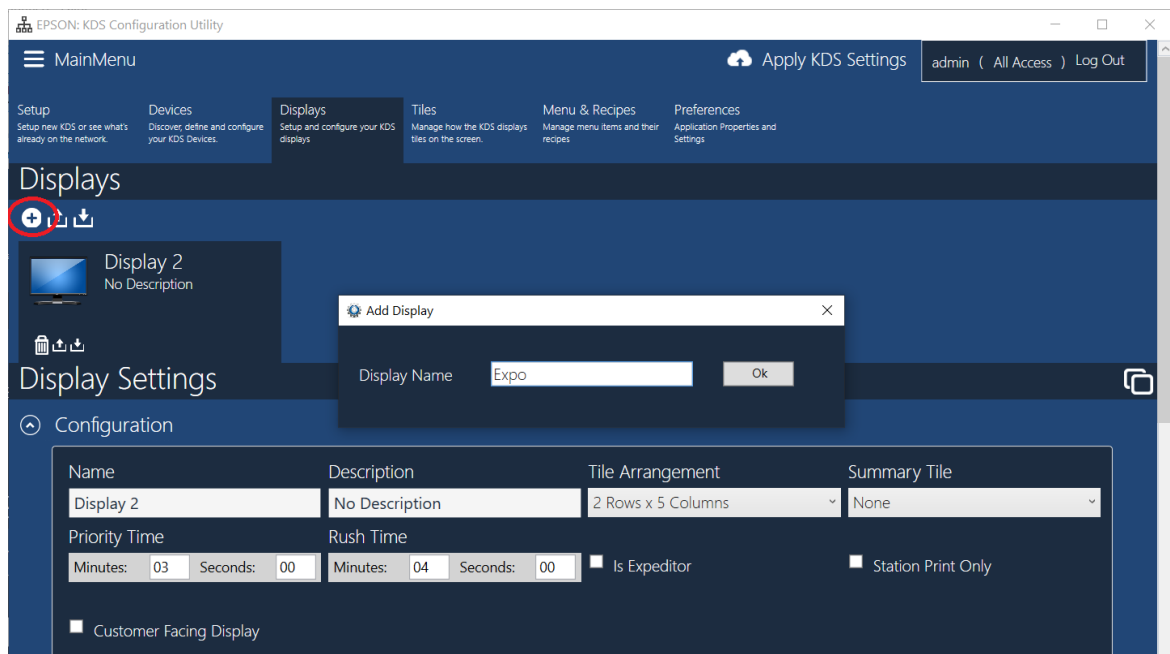


Picture 4.10

<b>EPSON</b>	KDS Multi Station Quick Start Guide Page 16 of 27	111-38-URM-003 R2.50
--------------	---	-------------------------



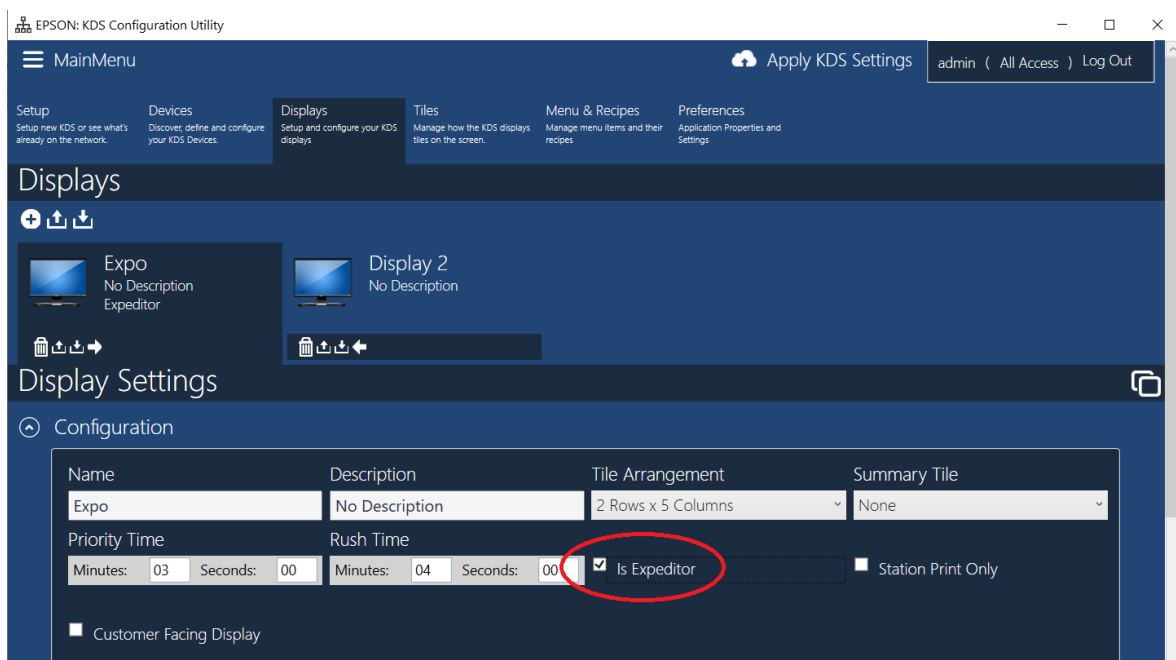
11. Select the + icon to add a new Display and call it “Expo”:



Picture 4.11

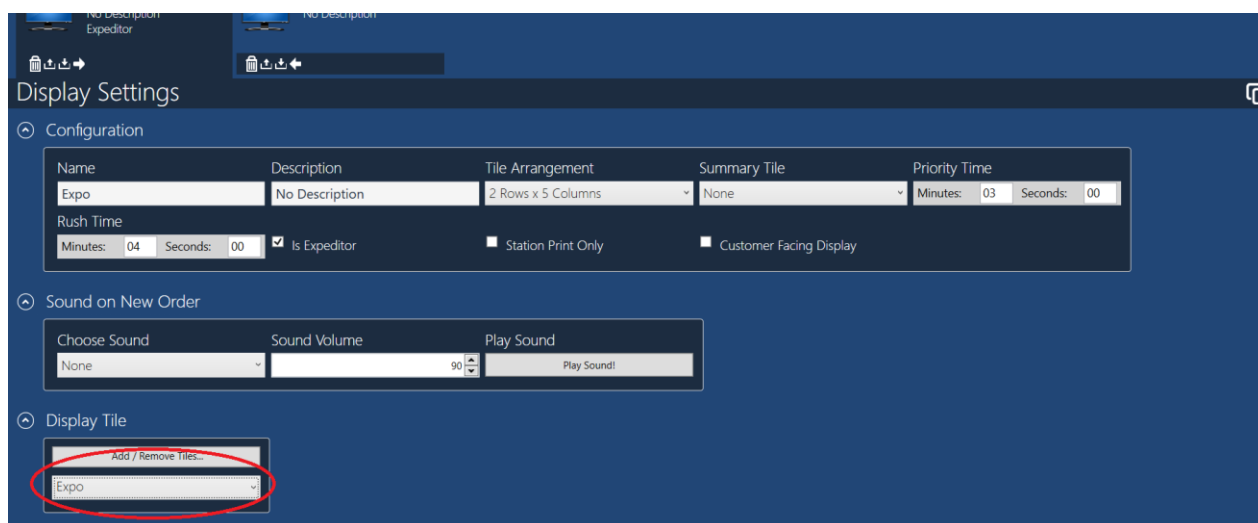
Click OK.

12. Click on the Expeditor checkbox to ensure it is checked.



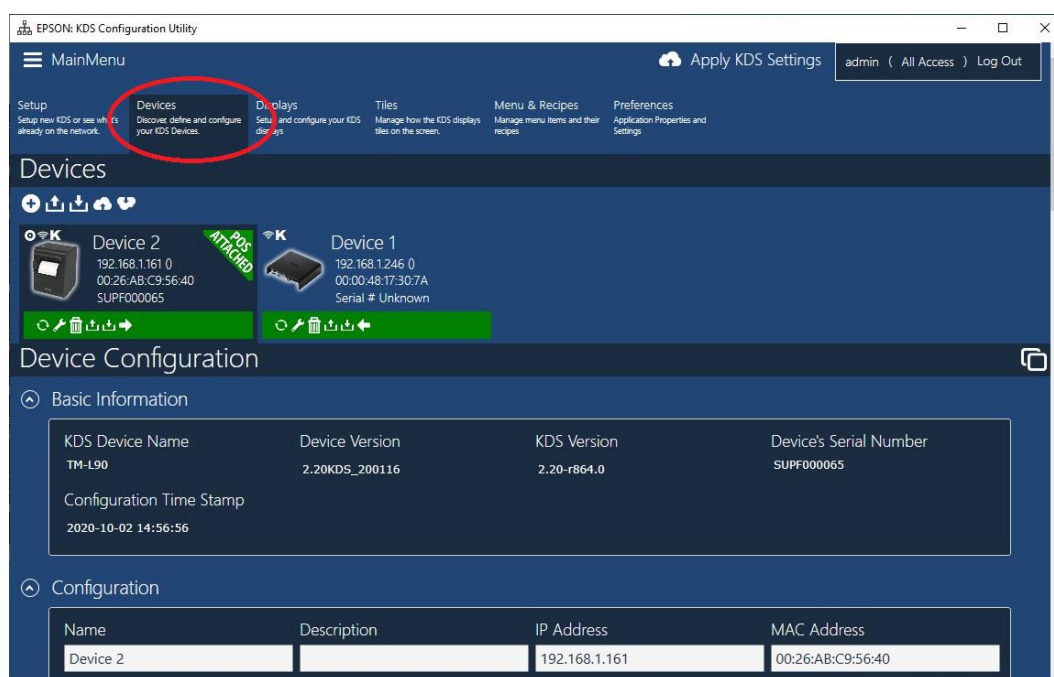
Picture 4.12

13. Under Display Tile, select “Expo”:



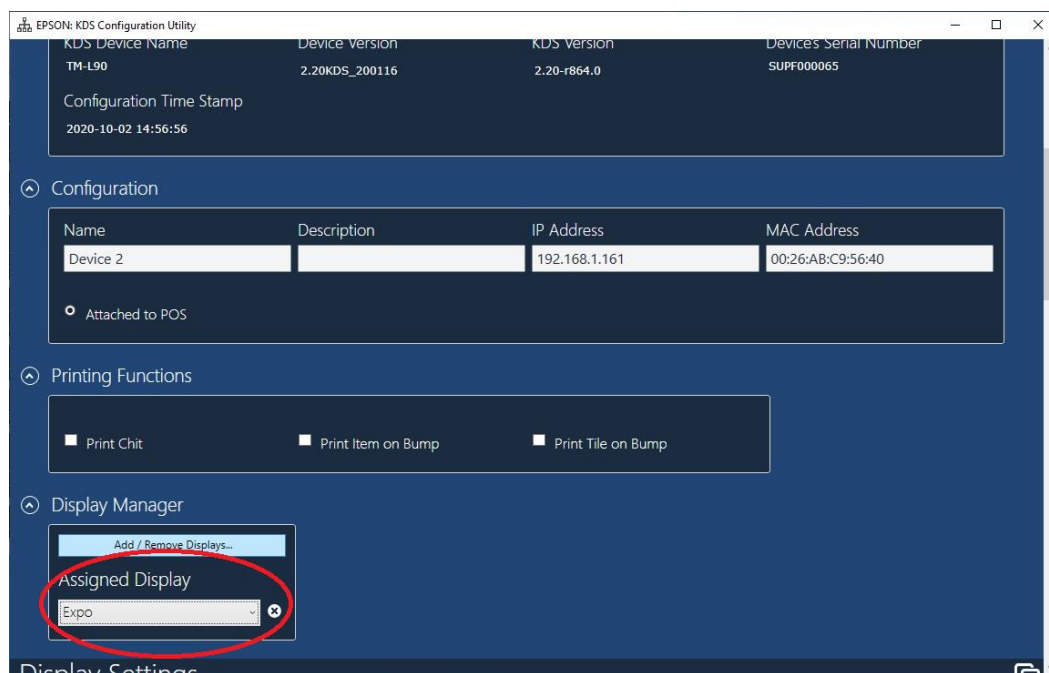
Picture 4.13

14. Select the Devices configuration:



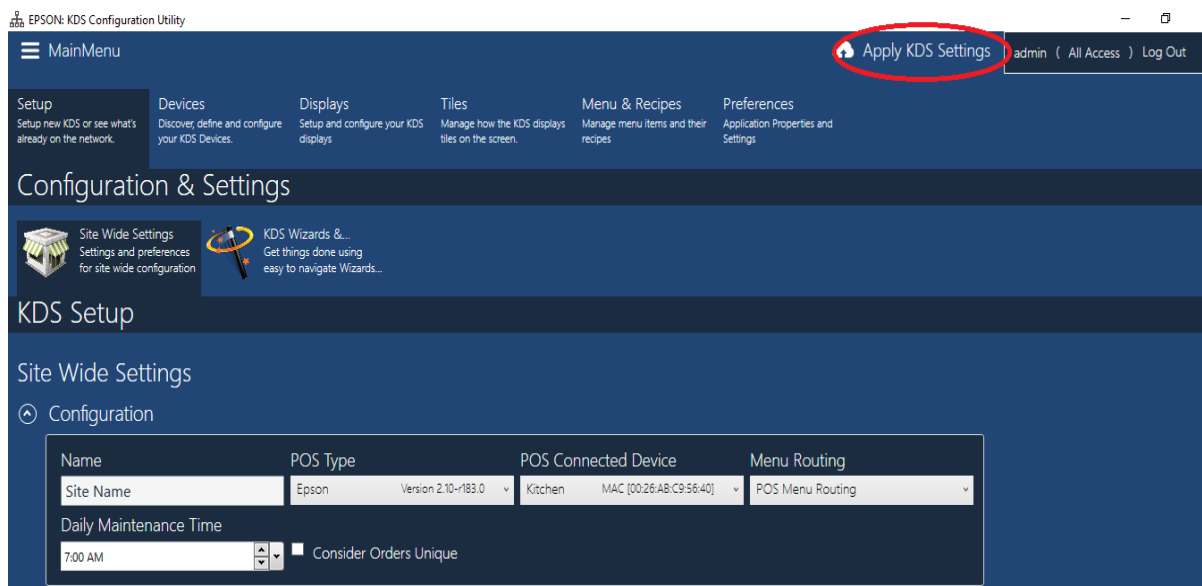
Picture 4.14

15. In Display Manager ensure that Expo is selected as the Assigned Display:



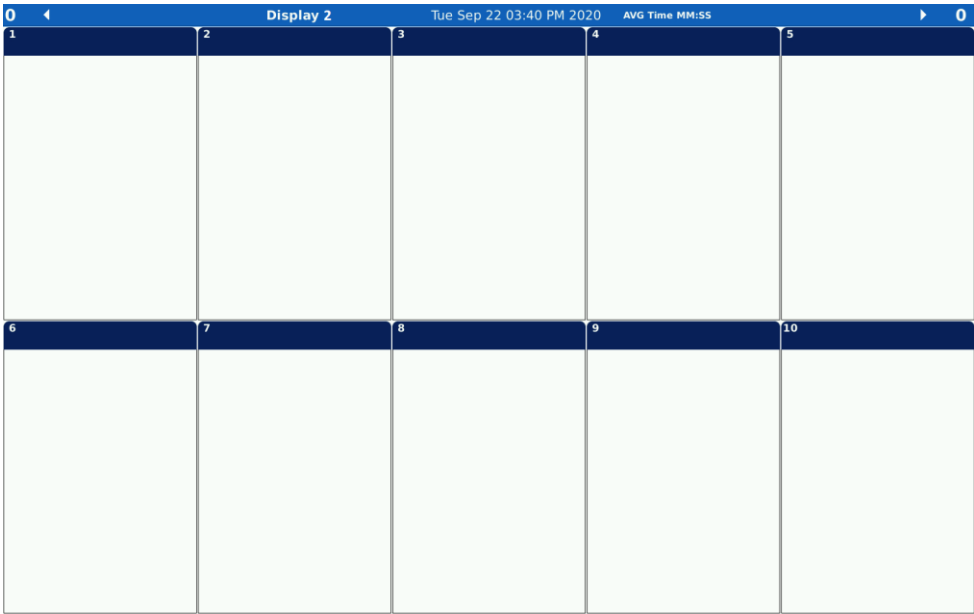
Picture 4.15

16. Click “Apply KDS Settings” to upload the configuration to the KDS printer:



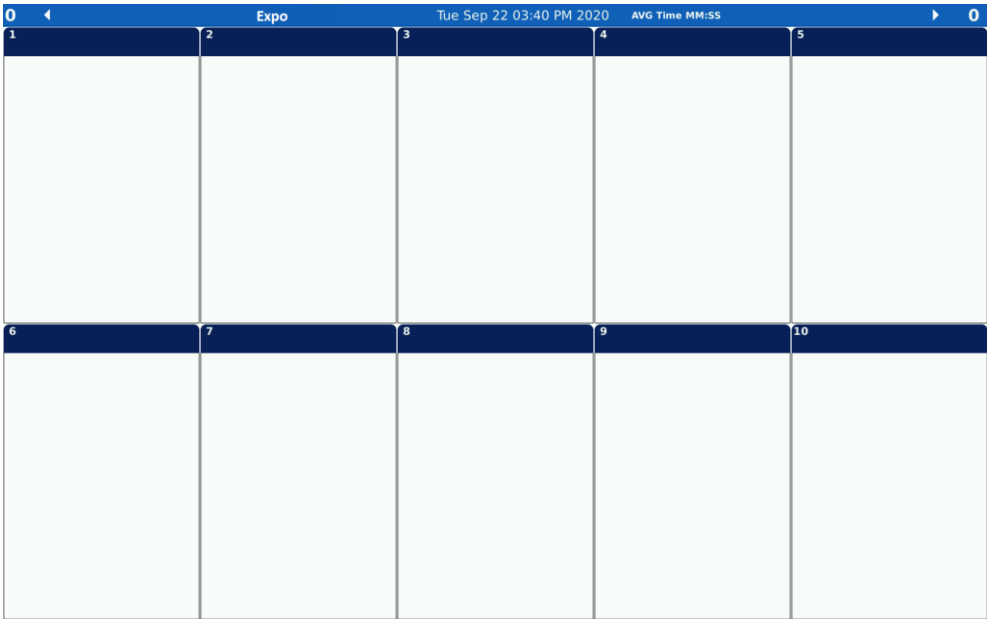
Picture 4.16

17. The KDS will take the configuration, reset and show the startup screen. The KDS controller box (Prep Station) will then show the following screen titled “Display 2”:



**Picture 4.17**

The KDS Printer (Expo Station) will show the following screen titled “Expo”:



**Picture 4.17.1**

**Note:** If either of the displays to be a touchscreen then you will be instructed to perform the onscreen calibration which simply requires pressing the screen at the request points when asked. After which the above screens will be displayed.


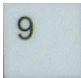
18. Send orders to the KDS printer using your POS and the orders will appear on both screens. Orders need to be bumped from the Display 2 station first by pressing the corresponding tile number on the bump bar. If using a touchscreen, orders can be bumped off by pressing in the tile header area.

When the order is bumped from Display 2, the tile background on the Expo display will change color, indicating that it can now be bumped off from that station.

<b>EPSON</b>	KDS Multi Station Quick Start Guide Page 21 of 27	111-38-URM-003 R2.50
--------------	---	-------------------------

## Appendix A

### Bumping an Entire Order

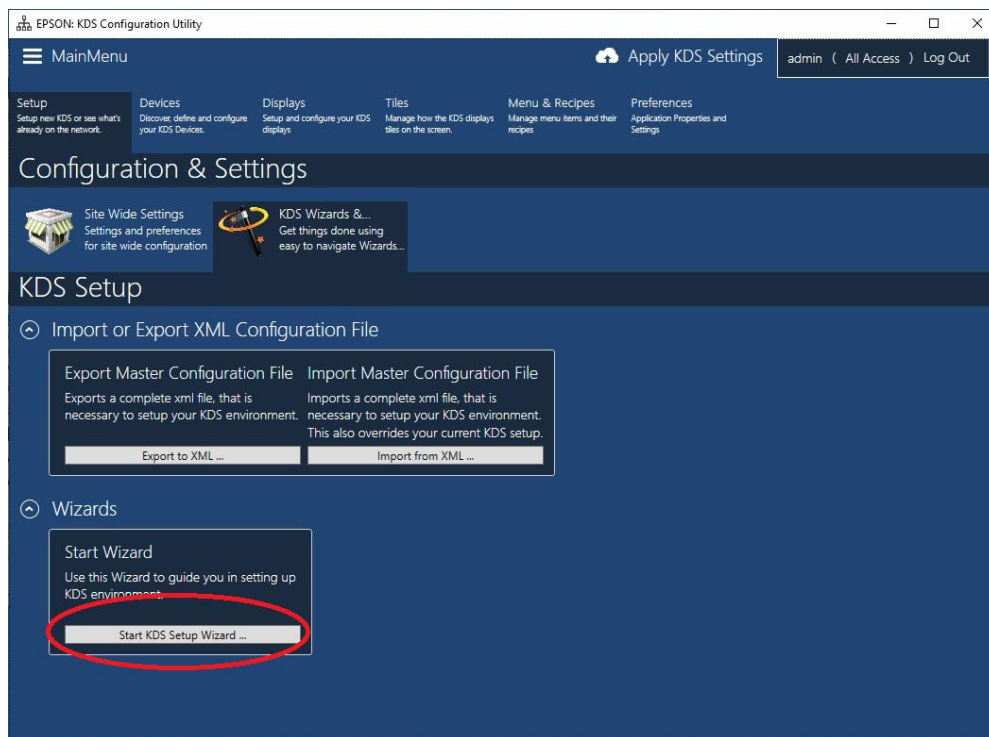
Pressing the tile number  -  to bump the order associated with that tile.

To bump order 10 – 12 you need to press the 0/10 key (which selects 10) and then 0-9 to select the second digit.

**Note:** There are other keys for other functionality on the bump bar that is beyond the scope of this guide.

## Appendix B

The KDS Wizard only starts automatically for the first instance of running the KDS Utility. Subsequent attempts will simply load to the existing configuration. If you wish to start the Wizard again you will need to go to the Setup Menu, select KDS Wizards... and then click “Start KDS Setup Wizard”:



**Picture B1**

<b>EPSON</b>	KDS Multi Station Quick Start Guide Page 22 of 27	111-38-URM-003 R2.50
--------------	---	-------------------------

## Appendix C

This chapter briefly describes some of the more common KDS functionality that can be configured. The details of these items are beyond the scope of this guide.

### Setup Configuration

1. Click on the **Setup** tab at the top of the screen.

The screenshot displays the EPSON KDS Configuration Utility web interface. The top navigation bar includes a 'MainMenu' icon, a cloud icon for 'Apply KDS Settings', and user information 'admin ( All Access ) Log Out'. Below the navigation bar, there are tabs for 'Setup', 'Devices', 'Displays', 'Tiles', 'Menu & Recipes', and 'Preferences'. The 'Setup' tab is active, showing 'Configuration & Settings' and 'KDS Setup' sections. Under 'KDS Setup', there are three expandable sections: 'Configuration', 'Time Settings', and 'Time Setting Actions'. The 'Configuration' section is expanded, showing a table with columns: Name, POS Type, POS Connected Device, Menu Routing, and Daily Maintenance Time. The table contains one row with values: Site Name, Epson, Version 2.10-1183.0, Device 2, MAC [00:26:AB:C9:56:40], POS Menu Routing, and 7:00 AM. Below the table are two checkboxes: 'Consider Orders Unique' and 'Independent Displays'. The 'Time Settings' section shows 'Time Zone' and 'NTP Time Server' fields. The 'Time Setting Actions' section has two buttons: 'Set Current KDS Time' and 'Set Time Zone & Time'.

Name	POS Type	POS Connected Device	Menu Routing	Daily Maintenance Time
Site Name	Epson Version 2.10-1183.0	Device 2 MAC [00:26:AB:C9:56:40]	POS Menu Routing	7:00 AM

☐ Consider Orders Unique ☐ Independent Displays

Time Settings

Time Zone: [ ] NTP Time Server: [ ]

Time Setting Actions

Set Current KDS Time Set Time Zone & Time

**Picture C1**

POS Type – Here you can select the POS that is sending orders so the KDS can parse them.

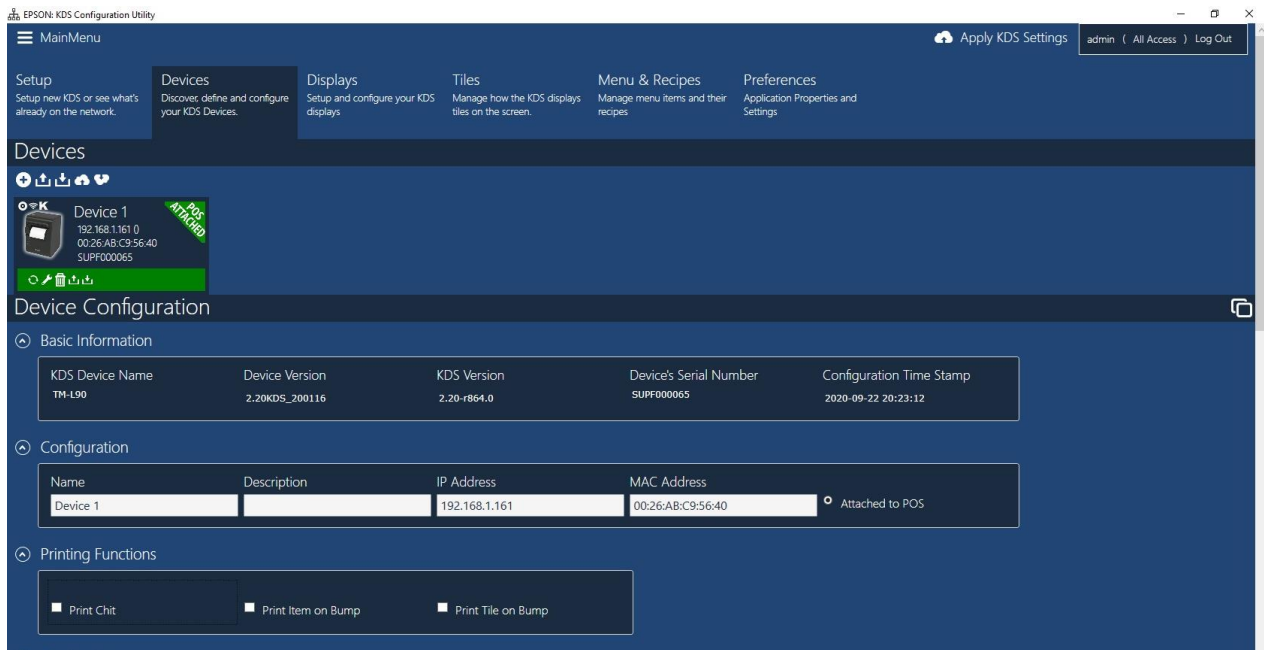
Consider Orders Unique – Any appends to an order will cause that order to show up in its own tile.

Set Current KDS Time – Allows the clock on the KDS display to be set to the same time as the PC.

<b>EPSON</b>	KDS Multi Station Quick Start Guide Page 23 of 27	111-38-URM-003 R2.50
--------------	---	-------------------------

## Device Configuration

1. Click on the **Devices** tab at the top of the screen.



Picture C2

Print Chit – When enabled the printer will print the incoming print job/chit from the POS.

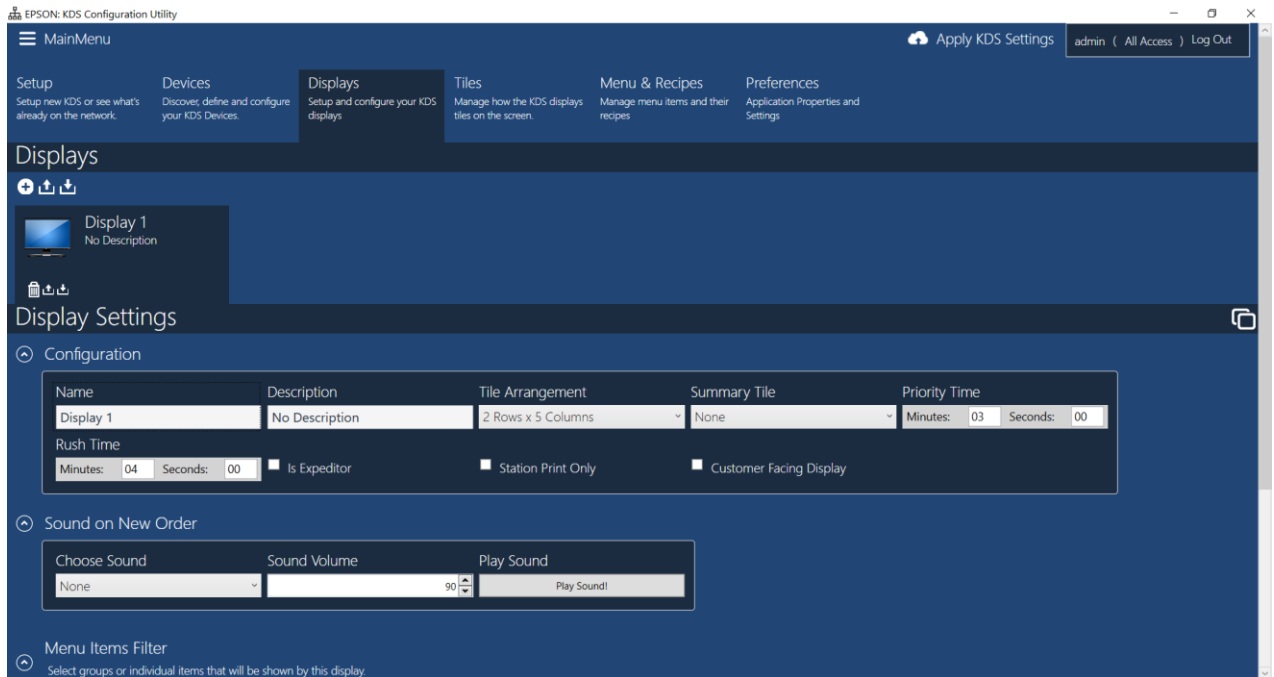
Print Item on Bump – When enabled the printer will print a label for each item that is bumped.

Print Tile on Bump – When enabled the printer will print a label for each tile/order that is bumped.



## Display Configuration

1. Click on the **Displays** tab at the top of the screen.



Picture C3

**Name** – Gives the display a name that is visible at the top of the KDS screen.

**Tile Arrangement** – Allows you to configure the tile grid that is displayed on the KDS screen.

**Summary Tile** – Allows you to configure a tile as a Summary tile for menu items.

(Menu items need to be entered in the Menu & Recipes and match exactly.)

**Priority Time** – The amount of time before the order header will change to the priority color.

**Rush Time** – The amount of time before the order header will change to the rush color.

**Is Expeditor** – Configure a station as an Expeditor – not relevant for Single Station.

**Station Print Only** – Configure the station to automatically bump and print the order – thus a screen does not need to be attached.

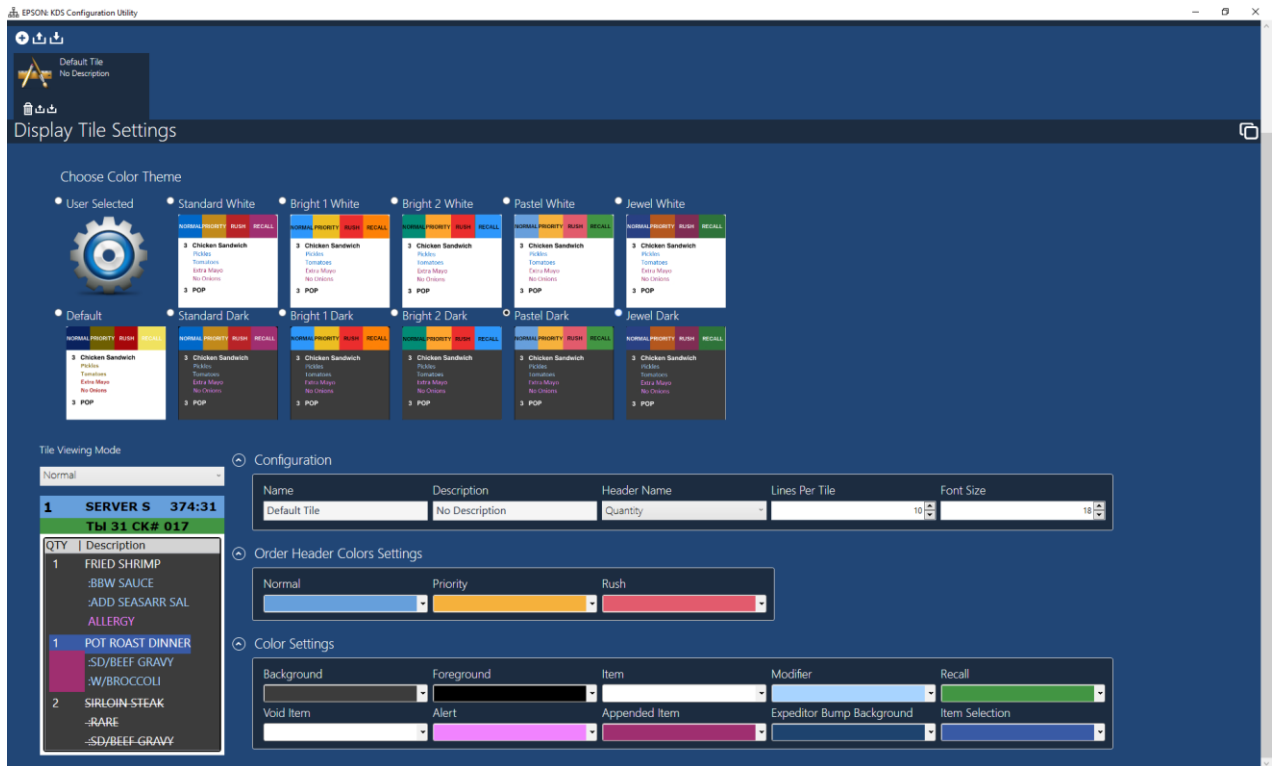
**Customer Facing Display** – Configure a station as an Order status screen for customers – not relevant for Single Station.

**Sound on New Order** – Choose a sound to be played on an incoming order to the KDS from an attached USB->Audio device.

<b>EPSON</b>	KDS Multi Station Quick Start Guide Page 25 of 27	111-38-URM-003 R2.50
--------------	---	-------------------------

## Tile Configuration

1. Click on the **Tiles** tab at the top of the screen.



**Picture C4**

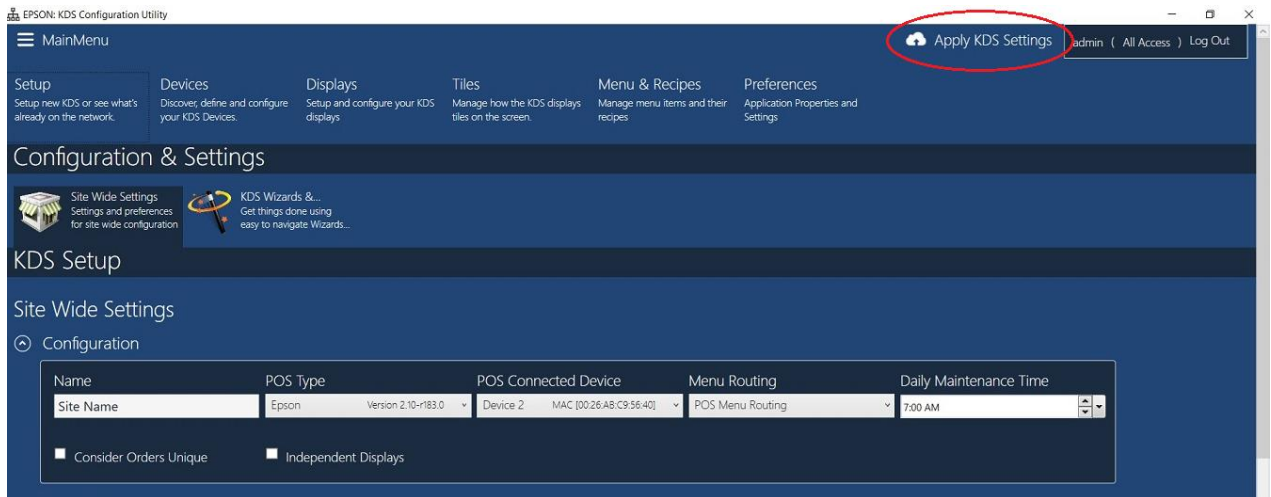
Lines Per Tile – Configure the number of order lines displayed in each tile.

Font Size – Adjust the font size for the order lines displayed in each tile.

Colors – The various colors on the display can be customized.

## Apply KDS Settings

1. After making any configuration changes, simply click “Apply KDS Settings” to have them uploaded to the KDS:



Picture C5