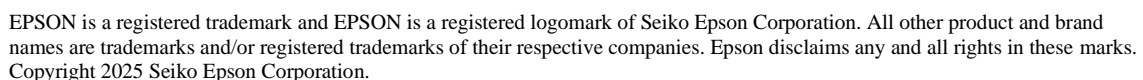


About this Guide

- **Overview** - A brief description of what a mirrored display is in a TrueOrder™ Kitchen Display System (KDS).
- **Configure Mirrored Displays** - A procedure that can be followed to configure this in a Multi-Station KDS system.

A Mirrored Display is a display that shows the exact same information as another display. All mirrored displays will show the exact same information, and bumping from one display will show the item bumped off and removed from other display(s) too.

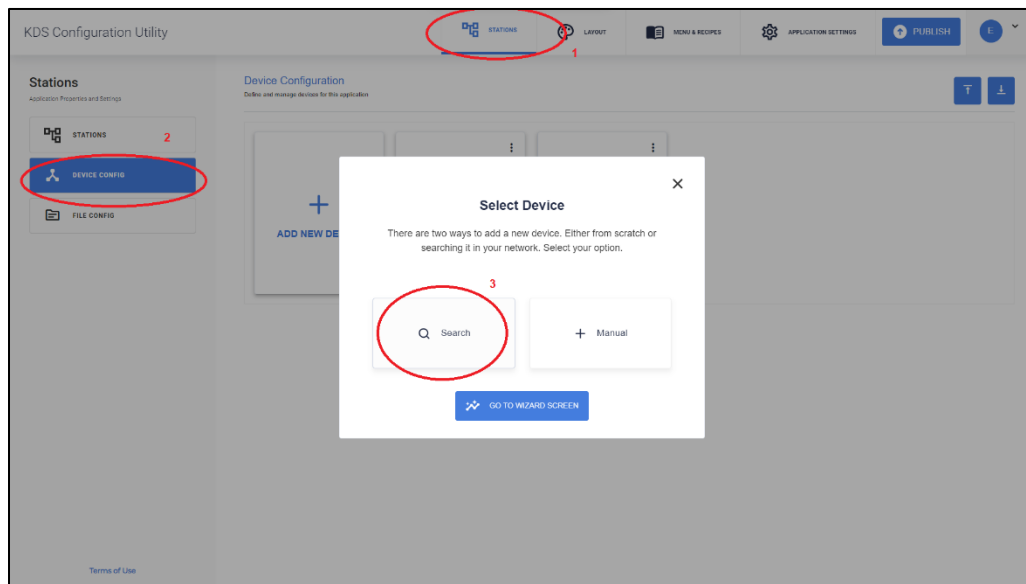


Configure Mirrored Displays

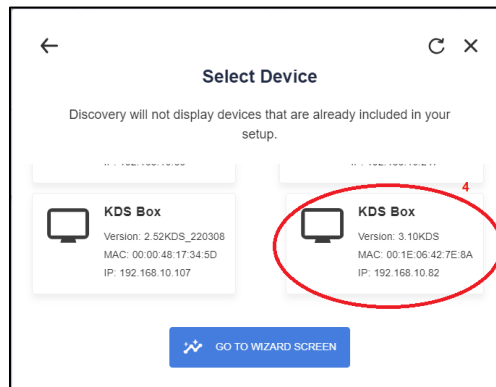
This guide assumes that you already have a 2 Station KDS system setup as described in the TrueOrder KDS Multi-Station Quick Start Guide.

1. Add a new Device.

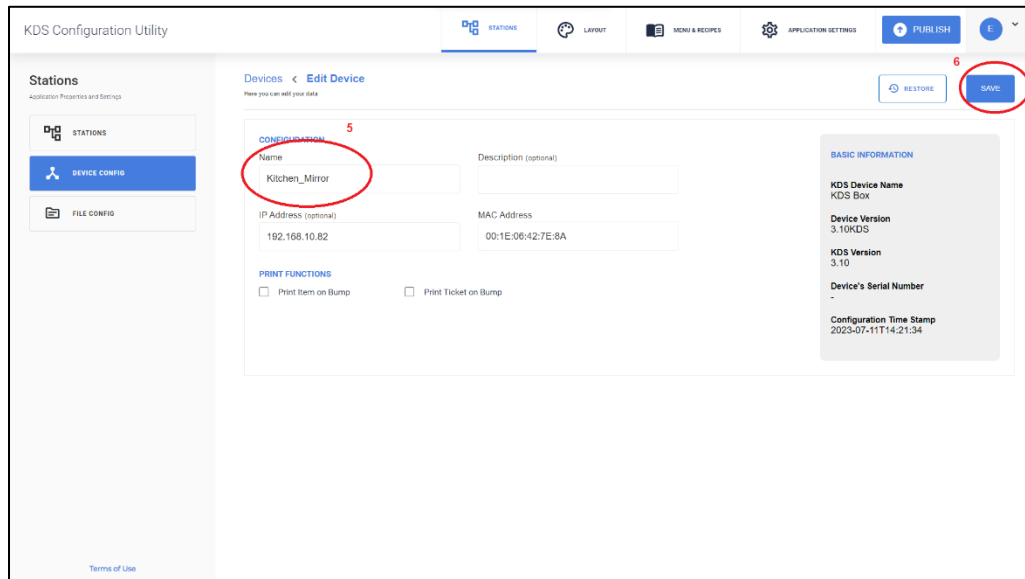
1. Select **Stations** from Menu header.
2. Click **Device Config**.
3. Search for Device in Select Device box.




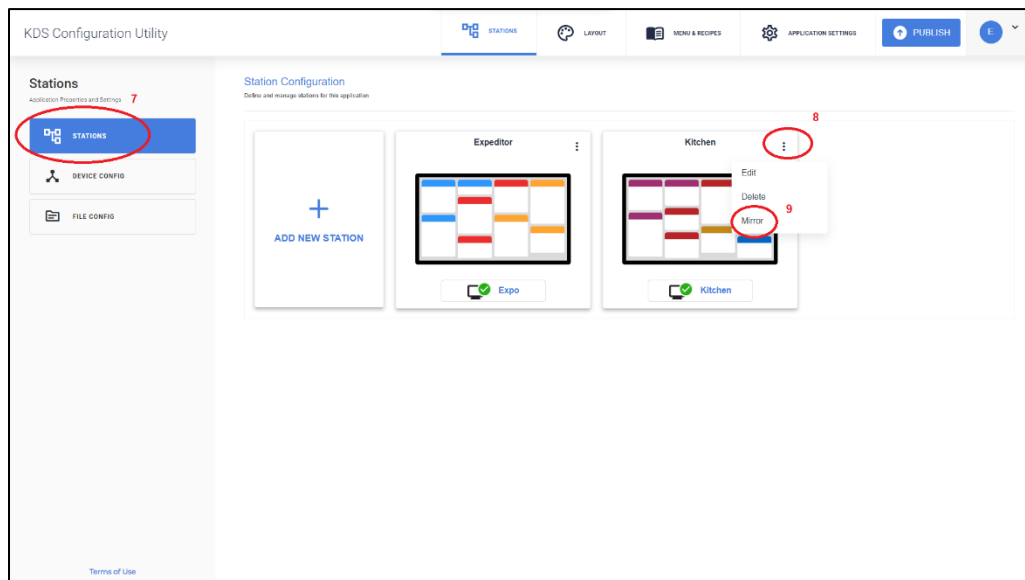
4. Select device that's *connected* to the network.



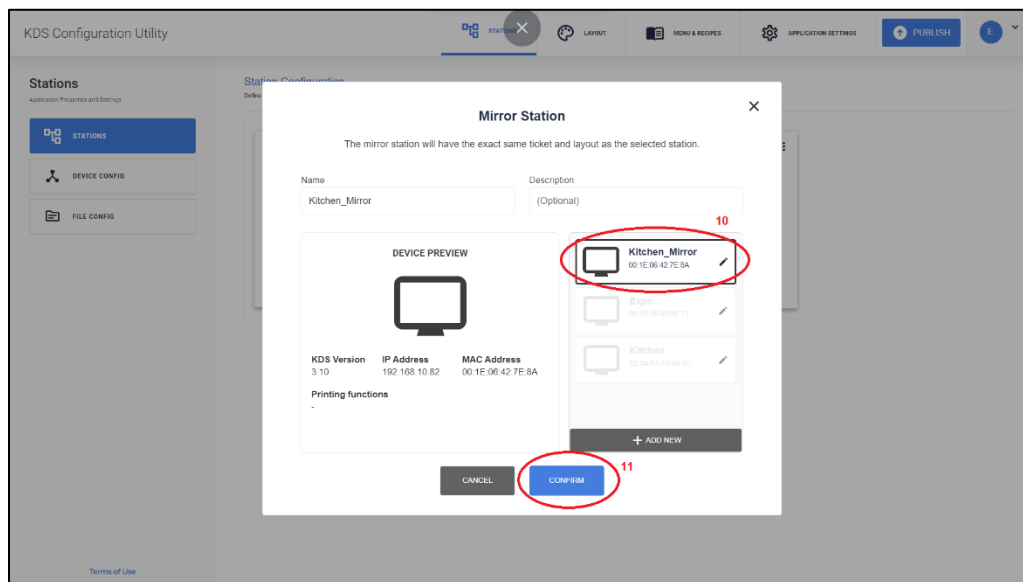
5. Name **Device** (e.g., Kitchen_Mirror).
6. Click **Save**.



7. Click **Stations**.
8. Click drop down menu icon  on the Kitchen Station.
9. Click **Mirror**.



10. Select **Kitchen_Mirror** Device.
11. Click **Confirm**.



12. Click **Publish**.

