

Configure Logo

About this guide:

This guide consists of 3 sections:

- **Overview** - Describes the functionality to change the logo on the display screens in a TrueOrder™ Kitchen Display System (KDS).
- **How to Change the Logo** – A procedure for how to upload and configure logos.
- **Hot to Change the Merchant Name** – A procedure for how to configure merchant names.

Overview

By default all displays (Kitchen, Expeditor, and Customer Facing) will show the Epson logo on the display header bar.

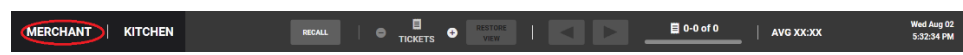
For Kitchen and Expeditor Displays



For Customer Facing Displays



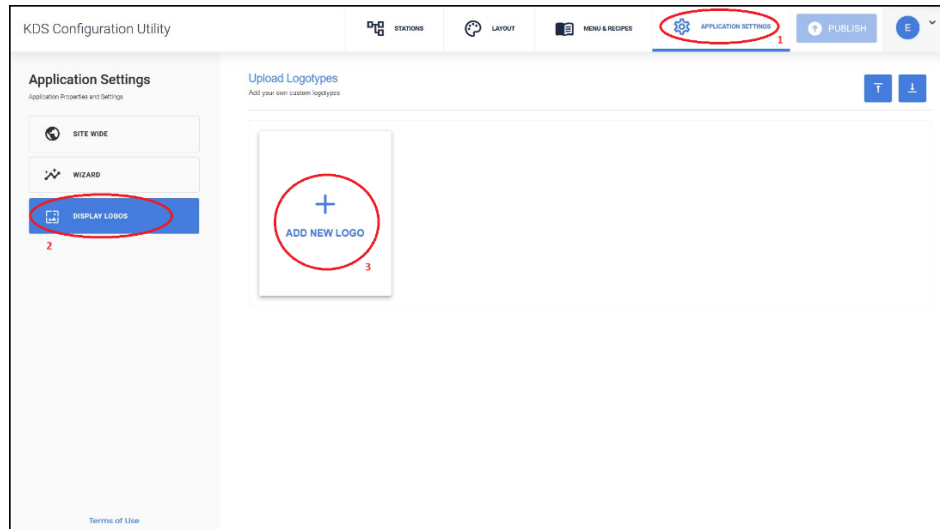
The user can upload a different logo or merchant name to be displayed instead.



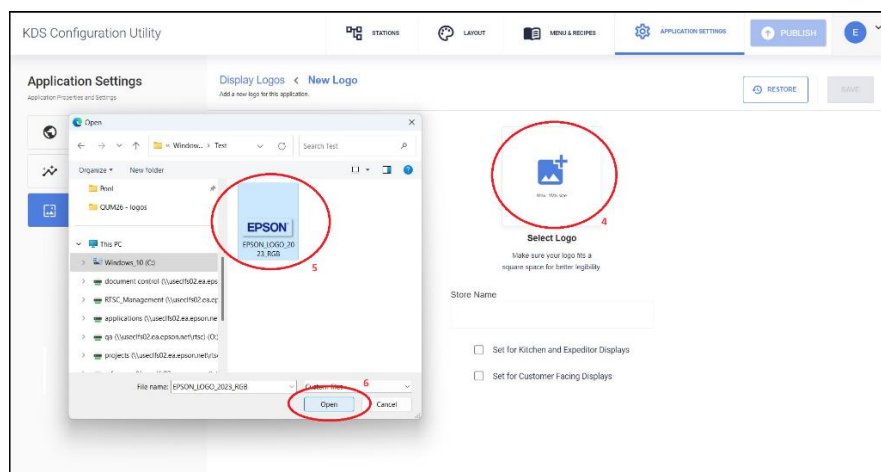
How to Change the Logo

This procedure assumes that you already have a TrueOrder KDS system working. From the configurator:

1. Click “APPLICATION SETTINGS”
2. Click “DISPLAY LOGOS”
3. Click “+ ADD NEW LOGO”

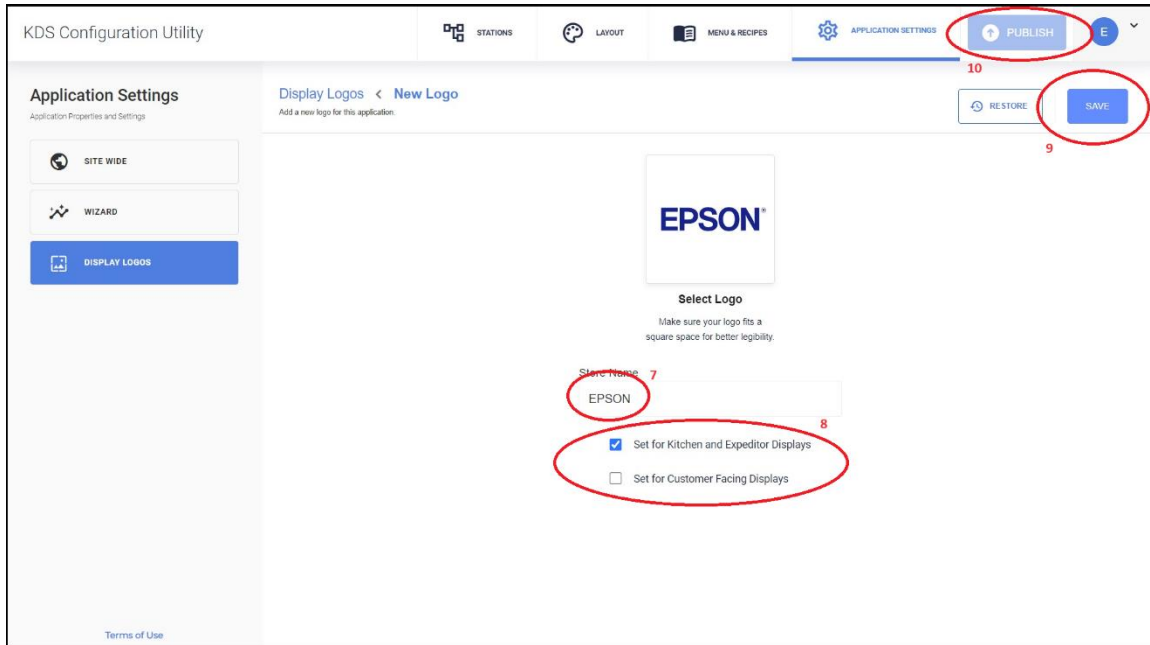


4. Click “Select Logo”
5. Navigate to the folder where your logo is and select it.
6. Click “OPEN”

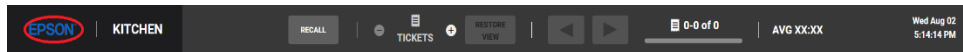


Note: The logo file should be a png file with transparent background, and size should be less than 1 MB.

7. Name the logo for reference.
8. Select which displays the logo is applicable to.
9. Click “SAVE”
10. Click “PUBLISH”



All kitchen and expeditor displays will show the new logo in the header bar:



If in step 8 you choose “Set for Customer Facing Displays”, all customer facing displays will show the new logo in the header bar:

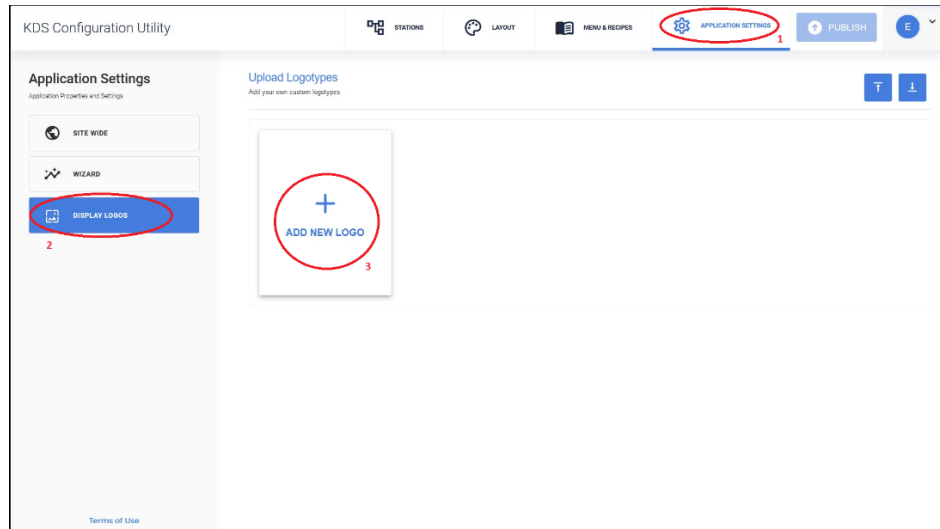


The user can also select “Set for Kitchen and Expeditor Displays” and “Set for Customer Facing Displays” together. In this case all displays in the system will show the logo.

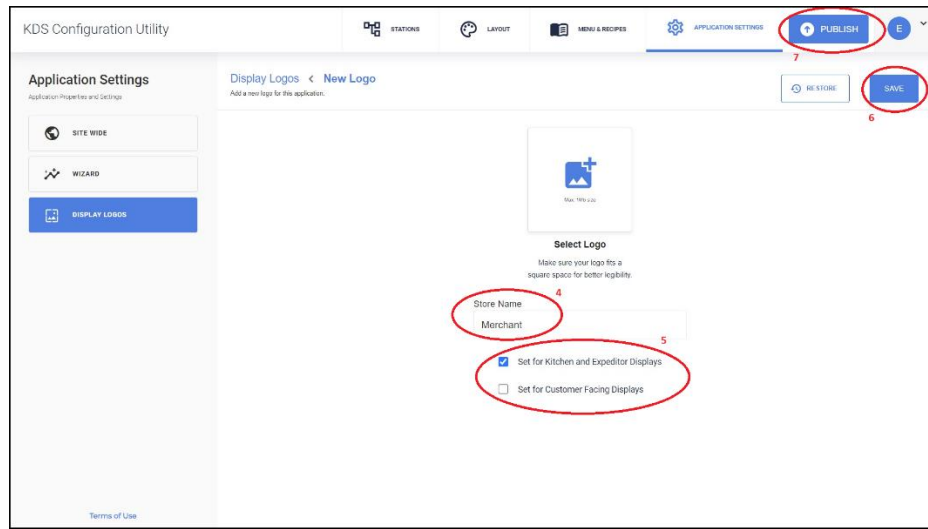
How to Change the Merchant Name

This procedure assumes that you already have a TrueOrder KDS system working. From the configurator:

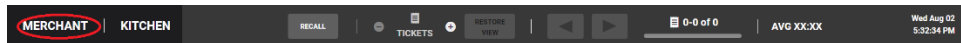
1. Click “APPLICATION SETTINGS”
2. Click “DISPLAY LOGOS”
3. Click “+ ADD NEW LOGO”



4. Enter the Store name to be displayed
5. Select which displays the logo is applicable to.
6. Click “SAVE”
7. Click “PUBLISH”



All kitchen and expeditor displays will show the store name in the header bar:



If in step 2 the user chose “Set for Customer Facing Displays”, all customer facing displays will show the store name in the header bar:



The user can also select “Set for Kitchen and Expeditor Displays” and “Set for Customer Facing Displays” together. In this case all of the displays in the system will show the merchant name.