



PP-100

User's Guide

4113114-02

Copyright and Trademarks

All rights reserved. No part of this publication may be reproduced, stored in a retrieval system, or transmitted in any form or by any means, electronic, mechanical, photocopying, recording, or otherwise, without the prior written permission of Seiko Epson Corporation. No patent liability is assumed with respect to the use of the information contained herein. While every precaution has been taken in the preparation of this book, Seiko Epson Corporation assumes no responsibility for errors or omissions. Neither is any liability assumed for damages resulting from the use of the information contained herein.

Neither Seiko Epson Corporation nor its affiliates shall be liable to the purchaser of this product or third parties for damages, losses, costs, or expenses incurred by purchaser or third parties as a result of: accident, misuse, or abuse of this product or unauthorized modifications, repairs, or alterations to this product, or (excluding the U.S.) failure to strictly comply with Seiko Epson Corporation's operating and maintenance instructions.

Seiko Epson Corporation shall not be liable against any damages or problems arising from the use of any options or any consumable products other than those designated as Original EPSON Products or EPSON Approved Products by Seiko Epson Corporation.

EPSON® is a registered trademark of Seiko Epson Corporation in the U.S. and other countries.

Microsoft® and Windows® are registered trademarks of Microsoft Corporation.

General Notice: Other product names used herein are for identification purposes only and may be trademarks of their respective owners. Epson disclaims any and all rights in those marks.

NOTICE: The contents of this manual are subject to change without notice.

Copyright © 2008 Seiko Epson Corporation. All rights reserved.

Contents

Copyright and Trademarks

Important Notice and Safety Instructions

Important Note	7
Important Safety Instructions	7
Setting up the product	7
Choosing a place for the product	8
Using the product	9
Handling ink cartridges	9
Notice for CD/DVD discs	10
Concerning incidental loss arising out of this product	11
About usage limitation	11
Warnings, Cautions, and Notes	12

Chapter 1 Using Your Software

Adding the product	13
Setting Working Folder	13
Overview of Applications	14
EPSON Total Disc Maker	14
EPSON Total Disc Monitor	15
EPSON Total Disc Setup	15
Using EPSON Total Disc Maker	15
Starting EPSON Total Disc Maker	15
Getting information through online help	15
Overview of Printer Driver	15
Accessing the printer driver	16
Getting information through online help	17
Uninstalling Software	17

Chapter 2 Publishing Discs

Introduction	18
Turning power on/off	18
Overview of publishing mode	19
Drive settings	20
Printer settings	20

Notice for CD/DVD writing and printing	21
Printing on CDs/DVDs with a commercially available software package.	23
Standard Mode	24
Loading CDs/DVDs	24
Making disc settings and creating labels	26
Making the stacker settings	27
Publishing Discs.	29
External Output Mode	31
Loading CDs/DVDs	31
Making disc settings and creating labels	34
Making the stacker settings	35
Publishing Discs.	38
Batch Mode	41
Loading CDs/DVDs	41
Making disc settings and creating labels	45
Making the stacker settings	46
Publishing Discs.	48
Taking Out Discs	50
Canceling Publishing	51

Chapter 3 Replacing Ink Cartridges

Checking the Ink Cartridge Status	52
Precautions on Ink Cartridge Replacement.	53
Replacing an Ink Cartridge	54

Chapter 4 Maintaining Your Product

Checking the Print Head Nozzles	59
Using the Nozzle Check utility	59
Cleaning the Print Head.	60
Using the Head Cleaning utility	61
Using the product buttons	62
Aligning the Print Head	62
Using the Print Head Alignment utility	62
Correcting the Printing Position	63
Using the Correcting the Printing Position utility	63
Cleaning Your Product.	64
Cleaning the exterior of the product.	64
Cleaning the interior of the product	65
Cleaning the filter.	65
Transporting Your Product.	66

Chapter 5 *Troubleshooting*

Diagnosing the Problem	68
Error indicators	68
EPSON Total Disc Monitor	76
Checking Product Status	76
Using EPSON Total Disc Monitor	76
Disc or the CD/DVD Tray Does Not Feed Correctly	78
Disc does not feed	78
Multiple discs feed	79
Disc jams	79
Writing Problem	80
Cannot write to the disc	80
Print Quality Problems	80
Horizontal banding	81
Vertical misalignment	82
Banding	82
Incorrect or missing colors	82
Blurry or smeared printout	83
Miscellaneous Printout Problems	83
Incorrect or garbled characters	83
Incorrect margins	84
Printout has a slight slant	84
Printed side is smeared or scuffed	84
Printing is too slow	84
Ink adheres to the recording surface	85
The Product Does Not Function	85
All lights are off	85
Lights came on and then went out	85
Only the power light is on	86
The ink light is flashing or is on after you replace the cartridge	86
Software cannot be installed	86
Ink Pad Nearly Full message is displayed by the software	87
Disc cannot be published	87

Appendix A *Where To Get Help*

Contacting Customer Support	88
Before Contacting Epson	88
Help for Users in the United States and Canada	88
Help for Users in the Europe (EMEA)	89

Appendix B Product Information

Product Parts and Control Panel Functions.	90
Product Parts	90
Control Panel	92
Ink and Disc	93
Ink cartridges	93
Discs	93
System Requirements	94
For using the product	94
Technical Specifications	95
Disc	95
Ink cartridges	98
Job processing	99
Printing	100
Write speed	100
Mechanical	100
Electrical	100
Environmental	101
Standards and approvals	101
Interface	101
Lifetime	101

Index

Important Notice and Safety Instructions

Important Note

You may use the software to operate the EPSON PP-100. You may use the EPSON PP-100 to copy materials onto media, including but not limited to CDs and DVDs. You agree to respect the rights of copyright owners. EPSON shall have no liability for, and you shall hold EPSON harmless from, any copyright infringement by you or your employees, representatives, or agents.

Important Safety Instructions

Read all the instructions in this section before using the product. Also, be sure to follow all warnings and instructions marked on the product.

Setting up the product

Observe the following when setting up the product:

- Do not block or cover the vents and openings in the product.
- Use only the type of power source indicated on the product's label.
- Use only the power cord that comes with the product. Use of another cord may result in fire or electric shock.
- The product's power cord is for use with this product only. Use with other equipment may result in fire or electric shock.
- Be sure the AC power cord meets the relevant local safety standard.
- For safety reasons, make sure to ground the power cord.
- Avoid using outlets on the same circuit as photocopiers or air control systems that regularly switch on and off.
- Avoid electrical outlets controlled by wall switches or automatic timers.
- Keep the entire computer system away from potential sources of electromagnetic interference, such as loudspeakers or the base units of cordless telephones.

- Do not use a damaged or frayed power cord.
- If you use an extension cord with the product, make sure that the total ampere rating of the devices plugged into the extension cord does not exceed the cord's ampere rating. Also, make sure that the total ampere rating of all devices plugged into the wall outlet does not exceed the wall outlet's ampere rating.
- Do not attempt to service the product yourself.
- Unplug the product and refer servicing to qualified service personnel under the following conditions:
The power cord or plug is damaged; liquid has entered the product; the product has been dropped or the casing is damaged; the product does not operate normally or exhibits a distinct change in performance.
- If you plan to use the product in Germany, the building installation must be protected by a 10 or 16 amp circuit breaker to provide adequate short-circuit protection and over-current protection for the product.
- When connecting the product to a computer or other device with a cable, ensure the correct orientation of the connectors. Each connector has only one correct orientation. Inserting a connector in the wrong orientation may damage both devices connected by the cable.
- If damage occurs to the plug, replace the cord set or consult a qualified electrician. If there are fuses in the plug, make sure you replace them with fuses of the correct size and rating.
- Commercially available replacement drives do not function on this product.

Choosing a place for the product




Observe the following when choosing a place for the product:

- Place the product on a flat, stable surface that extends beyond the base of the product in all directions. If you place the product by the wall, leave more than 10 cm (3.94") between the back of the product and the wall. The product will not operate properly if it is tilted at an angle.
- Leave enough space in front of the product for the disc cover to be fully opened.
- Avoid places subject to rapid changes in temperature and humidity. Also, keep the product away from direct sunlight, strong light, or heat sources.
- Avoid places subject to dust, shocks, vibrations, or cigarette smoke.
- Leave enough room around the product to allow for sufficient ventilation.

- ❑ Place the product near a wall outlet where the plug can be easily unplugged.

Using the product

Observe the following when using the product:

- ❑ Do not insert objects in the product.
- ❑ Take care not to spill liquid on the product.
- ❑ Do not use aerosol products that contain flammable gases inside or around this product. Doing so may cause fire.
- ❑ Always turn the product off using the  power button. When this button is pressed, the  power light flashes. Do not unplug the product or turn off the power to the outlet until the  power light stops flashing.
- ❑ Leave the ink cartridges installed. Removing the cartridges can dry out the print head and may prevent the product from printing.
- ❑ Be careful not to trap your fingers when closing the disc cover.
- ❑ The product uses galvanized sheet metal and this may cause rusting at the edges; however, this does not cause any harm to the function of the product.
- ❑ Do not place any drink or liquid on the product as penetration by liquid inside the product will cause a malfunction.
- ❑ Do not open disc cover while running a job (busy indicator is flashing), unless the application instructs to add or remove discs. This may affect write quality or print quality. Also, for safety reasons, do not put your hands inside the product while beeping as arm is still moving.
- ❑ Do not open disc cover while running a job (busy indicator is flashing), unless the application instructs to add or remove discs. This may affect write quality or print quality. Also, for safety reasons, do not put your hands inside the product while beeping as arm is still moving.

Handling ink cartridges

Observe the following when handling the ink cartridges:

- ❑ Keep ink cartridges out of the reach of children. Do not allow children to drink from or handle the cartridges.

- ❑ Do not shake ink cartridges; this can cause leakage.
- ❑ Be careful when you handle used ink cartridges, as there may be some ink remaining around the ink supply port. If ink gets on your skin, wash the area thoroughly with soap and water. If ink gets into your eyes, flush them immediately with water. If discomfort or vision problems remain after a thorough flushing, see a doctor immediately.
- ❑ Do not remove or tear the label on the cartridge; this can cause leakage.
- ❑ Install the ink cartridge immediately after you remove it from its package. If you leave a cartridge unpacked for a long time before using it, normal printing may not be possible.
- ❑ Use the ink cartridge before the expiration date printed on its package.
- ❑ Do not dismantle ink cartridges or try to refill them. This could damage the print head.
- ❑ After bringing an ink cartridge inside from a cold storage site, allow it to warm up at room temperature for at least three hours before using it.
- ❑ Store ink cartridges in a cool, dark place.
- ❑ Do not touch the green IC chip on the side of the cartridge. Doing so may prevent normal operation and printing.
- ❑ The IC chip on this ink cartridge retains a variety of cartridge-related information such as the ink cartridge status, so that the cartridge may be removed and reinserted freely. However, each time the cartridge is inserted, some ink is consumed because the product automatically performs a reliability check.
- ❑ If you remove an ink cartridge for later use, protect the ink supply area from dirt and dust, and store it in the same environment as the product. A valve in the ink supply port makes covers or plugs unnecessary, but the ink may stain items that come into contact with this area of the cartridge. Do not touch the ink supply port or the surrounding area.
- ❑ Do not store ink cartridges with the ink supply area facing down. This may result in ink leakage. Also, dirt attached to the ink supply area may result in the product not functioning properly.

Notice for CD/DVD discs

Before using the product, operation check should be conducted to make sure the functionality. Also, back up of the data on the CD/DVD should be taken if needed. Data may be damaged or lost in the following cases:

- Influence of static or electrical noise
- Incorrect usage
- Malfunction or repair

-Damage due to natural disaster

Epson does not hold any responsibility for lost or damaged data, due to the cause not limited to the above listed, even the product is under warranty period.

Concerning incidental loss arising out of this product

Should the expected results from this product, including bundled software, not be obtained, we cannot compensate for incidental loss arising from that fact, such as expenses required for use of this product and lost earnings that would have been gained through the use of this product.

About usage limitation

- When this product is used for applications requiring high reliability/safety such as transportation devices related to aviation, rail, marine, automotive etc.; disaster prevention devices; various safety devices etc; or functional/precision devices etc, you should use this product only after giving consideration to including fail-safes and redundancies into your design to maintain safety and total system reliability. Because this product was not intended for use in applications requiring extremely high reliability/safety such as aerospace equipment, main communication equipment, nuclear power control equipment, or medical equipment related to direct medical care etc, please make your own judgment on this product's suitability after a full evaluation.
- When copying a CD or DVD, you must meet the conditions that the work recorded on the discs do not have a copyright, that you have a copyright for the work, that you have received permission from the author, or that copying of the work on-to the discs is legally approved. Copying of a CD or DVD without meeting these conditions is illegal and should not be done.
- This product is for business use and not for household use.

Warnings, Cautions, and Notes

Warnings, Cautions, and Notes in this User's Guide as indicated below have the following meanings.



Warnings

must be followed carefully to avoid bodily injury.



Cautions

must be observed to avoid damage to your equipment.

Notes

contain important information and useful tips on the operation of the product.

WARNING

The connection of a non-shielded interface cable to this product will invalidate the EMC standards of this device. You are cautioned that changes or modifications not expressly approved by Seiko Epson Corporation could void your authority to operate the equipment.

FCC Compliance Statement For American Users

This equipment has been tested and found to comply with the limits for a Class B digital device, pursuant to Part 15 of the FCC Rules. These limits are designed to provide reasonable protection against harmful interference in a residential installation. This equipment generates, uses, and can radiate radio frequency energy and, if not installed and used in accordance with the instruction manual, may cause harmful interference to radio communications. However, there is no guarantee that interference will not occur in a particular installation. If this equipment does cause harmful interference to radio or television reception, which can be determined by turning the equipment off and on, the user is encouraged to try to correct the interference by one or more of the following measures:

- Reorient or relocate the receiving antenna.
- Increase the separation between the equipment and receiver.
- Connect the equipment into an outlet on a circuit different from that to which the receiver is connected.
- Consult the dealer or an experienced radio/TV technician for help.

For Canadian Users

This Class B digital apparatus complies with Canadian ICES-003.

Adding the product

Use the EPSON Total Disc Setup to add the product (CD/DVD publisher) to the computer.

1. Select **Start - All Programs** (or **Programs**) - **EPSON Total Disc Maker - EPSON Total Disc Setup**.

The EPSON Total Disc Setup will start.

2. Click **Add**.
3. Select the product to be added from CD/DVD Publisher List, then click **Next**.
4. Enter name and click **OK**.

Adding the product is complete.

Note:

When connecting another CD/DVD publisher, add the product again.

Setting Working Folder

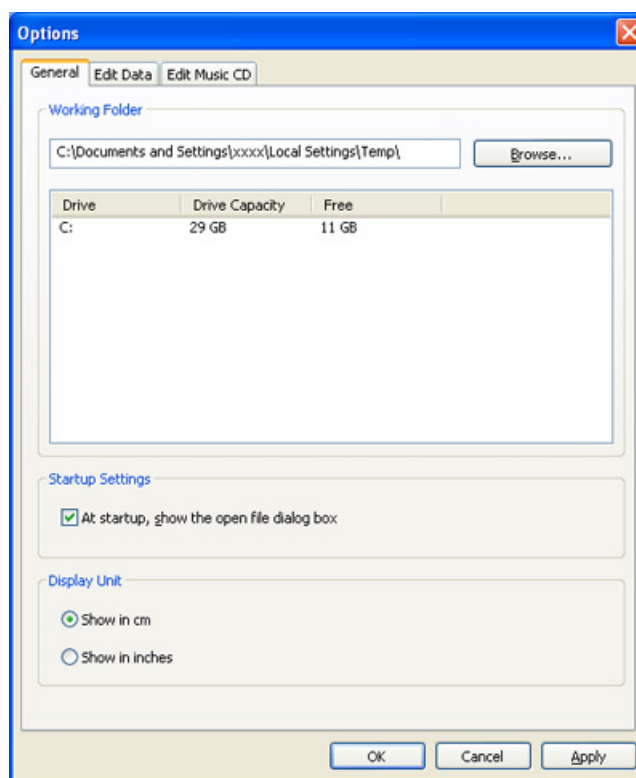
Create **Working Folder** on the hard disk for disc publishing operation.

Note:

- Working Folder *setting is done using Option dialogue of EPSON Total Disc Maker.*
- Option *dialogue will be displayed when starting EPSON Total Disc Maker for the first time.*

1. Start EPSON Total Disc Maker.
2. Click **Publish**.

3. Select **Option** from **Tool** menu.



4. Select a drive to create **Working Folder**.

Note:

Select a drive with sufficient free space (10 GB or more).

5. Click **OK**.

Overview of Applications

The EPSON Total Disc Maker software included with the product allows you to write or copy CDs/DVDs, create CD/DVD labels, and publish CDs/DVDs.

EPSON Total Disc Maker

EPSON Total Disc Maker lets you write CDs/DVDs and print CD/DVD labels. The process used to write CDs/DVDs and print CD/DVD labels is called "Publish" in the EPSON Total Disc Maker program. Using EPSON Total Disc Maker, you can also duplicate CDs/DVDs.

EPSON Total Disc Monitor

EPSON Total Disc Monitor is a utility that monitors the product and gives you information about its current status.

EPSON Total Disc Setup

EPSON Total Disc Setup is a utility to register the product to the computer.

Using EPSON Total Disc Maker

Use EPSON Total Disc Maker to do the following:


- Writing data to DVDs, data to CDs, music to CDs, music and data to CDs, or video to CDs, or copying CD/DVDs.
- Creating and editing CD/DVD labels.

Starting EPSON Total Disc Maker

Click **Start**, point to **All Programs** (Windows XP) or **Programs** (Windows 2000), point to **EPSON Total Disc Maker**, and then click **EPSON Total Disc Maker**.

Getting information through online help

You can access online help for EPSON Total Disc Maker from the software or from the Windows Start menu.

In EPSON Total Disc Maker window, click the  button to display EPSON Total Disc Maker Help.

Overview of Printer Driver

The printer driver lets you choose from a wide variety of settings to get the best printing results.

Accessing the printer driver

You can access the printer driver from EPSON Total Disc Maker, EPSON Total Disc Setup, most Windows applications, and the Windows Start menu.

To make settings that apply only to the application you are using, access the printer driver from that application.

To make settings that apply to all your Windows applications, access the printer driver from the Start menu.

Refer to the following sections to access the printer driver.

From EPSON Total Disc Maker

1. Click **Start**, point to **All Programs** (Windows XP) or **Programs** (Windows 2000), point to **EPSON Total Disc Maker**, and then click **EPSON Total Disc Maker**.
2. Click **Publish**.
3. Select **Print Settings** from **Tool** menu.

From EPSON Total Disc Setup

1. Click **Start**, point to **All Programs** (Windows XP) or **Programs** (Windows 2000), point to **EPSON Total Disc Maker**, and then click **EPSON Total Disc Setup**.
2. Select CD/DVD Publisher then click **Properties**.

From Windows applications

1. Click **Print** or **Print Setup** in the File menu.
2. In the window that appears, click **Printer**, **Setup**, **Options**, **Preferences**, or **Properties**. (Depending on your application, you may need to click one or a combination of these buttons.)

From the Start menu

1. **Windows XP:**
Click **Start**, **Control Panel**, then click **Printers and Faxes**. (If the Control Panel is in Category View, click **Printers and Other Hardware**, then click **Printers and Faxes**.)

Windows 2000:

Click **Start**, point to **Settings**, then click **Printers** or **Printers and Faxes**.


2. Select the printer, then click **Printing Preferences** in the File menu.

Getting information through online help

You can access online help for items in the printer driver from your application or from the Windows Start menu.

➔ See “Accessing the printer driver” on page 16.

In the printer driver window, try one of the following procedures.

- Right-click the item, then select **What’s This?**.
- Click the  button at the top right of the window, then click the item.

Uninstalling Software

You can uninstall the software by following the steps below.

Note:

- To uninstall the software, you must log on as a user with administrative privileges (belonging to the Administrators group).*
- When installing the software, various Microsoft components may be installed. Some of them may not be uninstalled when uninstalling the software.*

1. Turn off the power and disconnect the USB cable.
2. Close all applications.
3. **Windows XP:**
Click **Start**, and then select **Control Panel**.

Windows 2000:

Click **Start**, point to **Settings**, and then select **Control Panel**.

4. Double-click the **Add or Remove Programs** icon.
5. Choose EPSON Total Disc Maker.
6. Click **Change/Remove**.
7. Select **Remove** and click **Next**.
8. When the confirmation message appears, click **Yes**.
9. Follow the on-screen instructions.

Introduction

This section guides you through the procedures for creating and printing CDs/DVDs.

Note:



For information on CDs/DVDs, see the following section.

➔ See “Discs” on page 93.



Turning power on/off

This section describes how to turn on/off power.

Turning power on

1. Connect the power cable.
2. Press  **power** button until the power light flashes.
 -  Power light flashes in green, then stays on.

Turning power off

Press the  **power** button. The ○  power light will flash in green then turn off; then power is turned off.



Caution:

- ❑ *Fan will operate after turning power off, but it will automatically stop after 15 minutes.*
- ❑ *If the product is operating, wait for 10 seconds after operation is stopped, then turn off power.*
- ❑ *The product may not be recognized by the computer when the power is turned back on while fan is operating. In this case, disconnect the USB cable and connect it again.*

Note:

- ❑ *If turning off the product while power on the PC is on, follow the procedure below. If the product is turned off without following the procedure, data in the PC maybe damaged.*
 1. *If Total Disc Maker, Total Disc Monitor, or Total Disc Setup is running, close the software.*
 2. *Double click "Safely Remove Hardware" on the task tray.*
 3. *Select DVD drive on the product and select **Stop**.*

Overview of publishing mode

To write data to CDs/DVDs and to print labels that you created/edited are called “Publish” in EPSON Total Disc Maker. The product has three kinds of publishing modes.

Standard Mode

This mode uses Stacker 1 as the input source, and Stacker 2 or 4 as the output source.

When Stacker 2 is selected as the output source, up to 50 CDs/DVDs can be created at once. Also, if you refill discs to the input stacker and take out published discs from the output stacker at the same time, up to 1000 CDs/DVDs can be published in a single job.

If Stacker 4 is selected as output source, discs can be removed without stopping the product while running a job.

Note:

This mode does not use Stacker 3.

➔ See “Standard Mode” on page 24.

External Output Mode

This mode uses Stacker 1 and 2 as the input sources, and Stacker 4 as the output source.

Different types of discs (CD and DVD) can be loaded into each of the 2 stackers and can create different types of discs. This is ideal for creating small batches of discs at once.

If **Auto** is selected for Input Stacker setting, up to 100 CDs/DVDs can be created at once. If a setting other than Auto is selected, up to 50 CDs/DVDs can be created at once.

Since discs are ejected to Stacker 4, discs can be removed without stopping the product while running a job.

Note:

This mode does not use Stacker 3.

➔ See “External Output Mode” on page 31.

Batch Mode

This mode uses Stacker 1 and 2 as the input source, and Stacker 2 and 3 as the output sources.

You can create up to 100 CDs/DVDs at once without refilling and taking out discs while publishing. To use this mode, you need to place Stacker 3 into the product.

➔ See “Batch Mode” on page 41.

Drive settings

Drive to be used

Select Drive to Use from the following.

Use Both

Use both Drive 1 and 2 to write data. Job will be efficiently processed by using 2 drives. If trouble occurs on either drive and it cannot write data, other drive will be used automatically.

Use Drive 1 Only

Use only Drive 1.

Use Drive 2 Only

Use only Drive 2.

Number of write retries

Select 0 to 9 for the Number of write retries.

The Number of write retries is a setting to retry writing if a write error occurs.

Setting the Number of write retries will enable the job to continue without pausing if a write error occurs.

Printer settings

Printer name

Select Printer Name.

Note:

When changing the printer name, do not use Unicode characters. The device will not be recognized correctly.

Show error mark on discs that experience errors

If you check this check box, an error mark will be printed on any disc with a write error. This is useful to identify the disc which encountered the write error.

The disc with the write error will be ejected to different stackers depending on the print mode.

- Standard Mode: Ejected to Stacker 4
- External Output Mode: Ejected to Stacker 4
- Batch Mode: Ejected to Stacker 2 or 3

Note:

The error mark will not be printed in the following cases.

- The job was cancelled*
- An incorrect disc type was found in the stacker*
- Fatal error*
- Not enough ink was left to print the error mark*

Notice for CD/DVD writing and printing

- Store the stacker out of direct sunlight. A warped or damaged stacker may stop the product from operating normally.
- Use only CDs/DVDs labeled as suitable for printing, for example “Printable on the label surface” or “Printable with ink jet printers.”
- For more details on handling CDs/DVDs and for guidelines for writing data to CDs/DVDs, refer to your CD/DVD documentation.
- When using the product for the first time after storing it for a long time or after an error, missing dots or ink stains may appear and print quality may be reduced. If publishing a large number of discs, check print quality by publishing one disc in advance. If any dots are missing, run Head Cleaning.
- When writing and printing discs separately, it is recommended to print after writing. If you write discs after printing, ink may cause discs to stick to each other and result in a transport error, or dirt, stains, or scratches on the disc may cause a write error.
- Printing on rib area may result in ink sticking, disc sticking, or color loss.

- Try to test print on a spare CD/DVD, and check the printed surface after waiting for one full day, especially before printing a large number of CDs/DVDs.
- After printing the first copy, check the print quality to see if any dots are missing.
- Before using or touching the printed surface of your CDs/DVDs, make sure they are completely dry and keep them out of direct sunlight.
- If the printed surface is sticky even after it has dried, do the following.
 1. Change label type.
 2. Change color saturation level.
 3. Change the disc.
- Moisture on the printable surface may cause smearing.
- When using Epson specified discs, High Speed can not be selected.
- Reprinting on the same CD/DVD may not improve the print quality.
- Be sure to clean the inside of the stacker before using if there are any dirt.
- Please check disc before printing, as the size of the receptor may vary.
- Ink may not bond if printed outside the receptor.
- If the product is operating, wait for 10 seconds after the operation is finished, and then turn the power off.
- Data may be lost depending on the disc or storing condition; therefore, store important data on multiple discs. Epson does not guarantee the data against loss.
- Do not insert a disc between DVD drive 1 and DVD drive 2, as you may not be able to remove it.
- Do not insert an object like a screwdriver or clip into the CD/DVD slots as this may cause a malfunction.
- A published CD/DVD may not be readable on another type of drive or player due to compatibility.
- The quality of the blank disc determines print and write quality. It is recommended to use only the specified disc type.
- It is recommended that you run a compare while writing data.
- Making a backup is recommended if the data is important. Recorded data may degrade over long storing periods. It is recommended to make backups periodically.

- ❑ Do not shock or vibrate the product while reading or writing, as this may result in malfunction of the drive or make the disc unusable.
- ❑ Do not use a cracked, warped, or deformed discs because it may break in pieces inside the product and cause malfunction or injury.
- ❑ A disc may become unreadable or unwritable if it has a small scratch or dirt; therefore, please handle it with care.
- ❑ Do not touch both surfaces when holding a disc.
- ❑ The completed job display of EPSON Total Disc Monitor shows the number of successes, number of failures, and number of discs printed.
- ❑ If the source drive was manufactured before 2003, commands used for reading may not be supported and may result in error. In this case, change the drive and try again.
- ❑ Do not use discs with lens cleaner, CD/DVD label sticker, or condensation on them as it may cause mechanical error or malfunction.
- ❑ If the file system of the computer used is FAT, DVD writing may not be possible.

Printing on CDs/DVDs with a commercially available software package

When you print on CDs/DVDs with a commercially available software package that supports CD/DVD printing, you have to make the following settings.

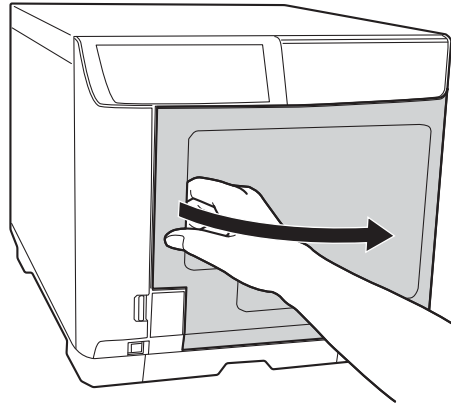
Size	124 x 124 mm (4.88 x 4.88")
Type	CD/DVD Label, CD/DVD Premium Label, or EPSON Specified CD/DVD Label
Margins on all sides	2 mm (0.08")

Standard Mode

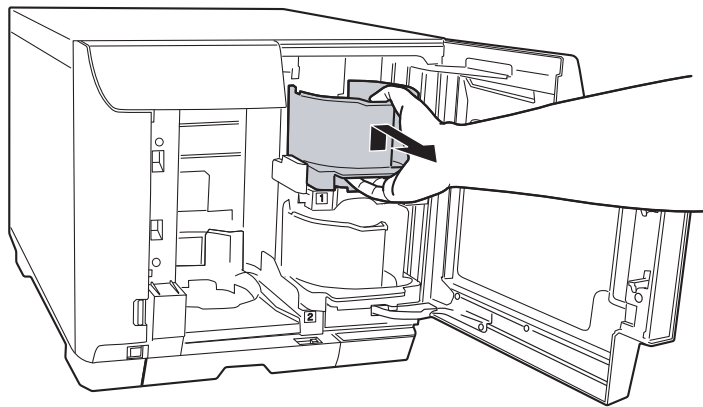
Loading CDs/DVDs

Follow the steps below to load CDs/DVDs.

1. Open the disc cover.

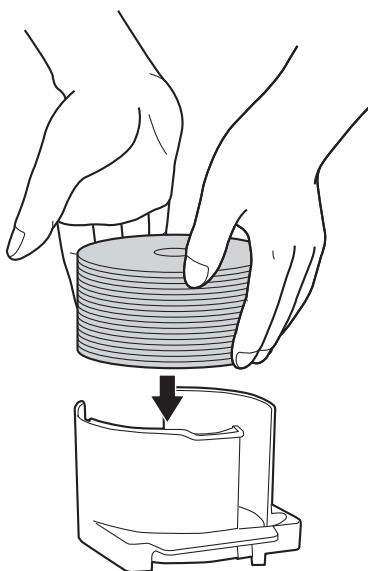


2. Take out Stacker 1.



3. Fan a stack of discs to prevent them from sticking together. Be careful not to scratch the recording side of the disc.

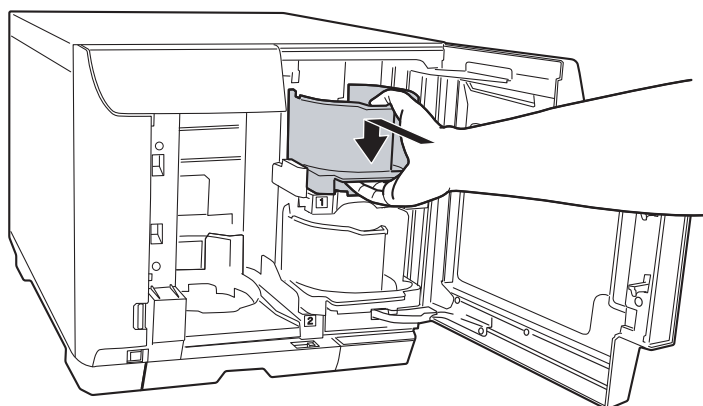
4. Load CDs/DVDs into Stacker 1 with the printable side facing up.



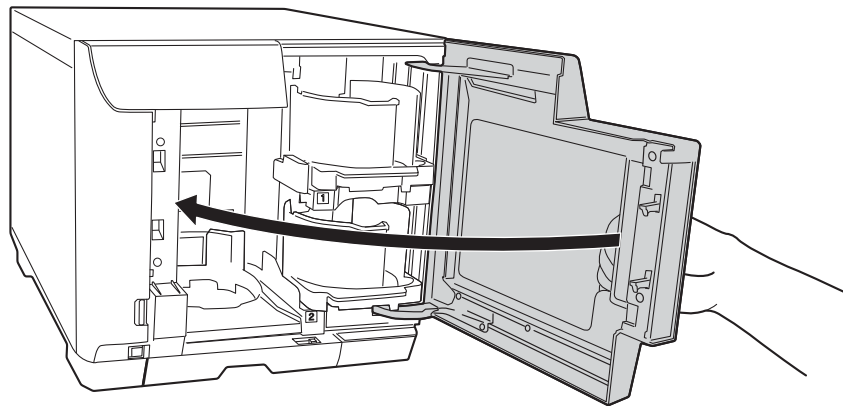
Caution:

Do not load the discs above the red line marked on the stacker; otherwise, the discs or product may be damaged.

5. Insert Stacker 1.

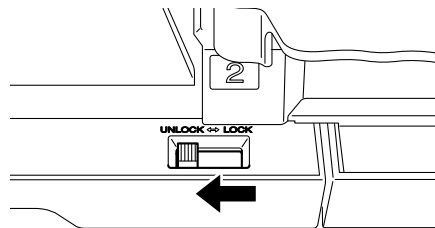


6. Close the disc cover.



Caution:

- Do not yank Stacker 4 when pulling it out to remove published discs.
- Do not remove Stacker 4 when the Stacker 4 LED is flashing fast. Discs may be damaged.
- Unlock the lock lever when using Stacker 4.



- Do not install Stacker 3.

Making disc settings and creating labels

After loading discs into the stacker, access EPSON Total Disc Maker to make settings for writing discs, and create the labels printed on the discs.

Accessing EPSON Total Disc Maker

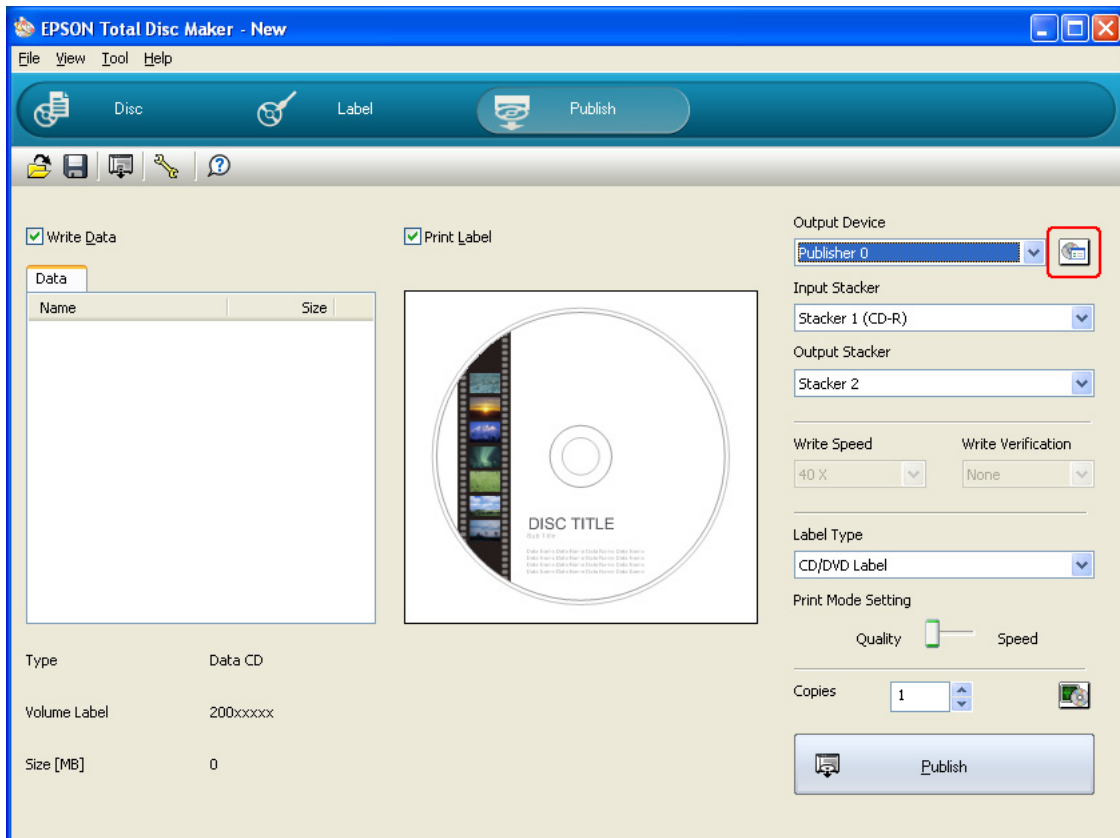
Click **Start**, point to **All Programs** (Windows XP) or **Programs** (Windows 2000), point to **EPSON Total Disc Maker**, and then click **EPSON Total Disc Maker**.

To learn how to use EPSON Total Disc Maker, go to the Help menu.

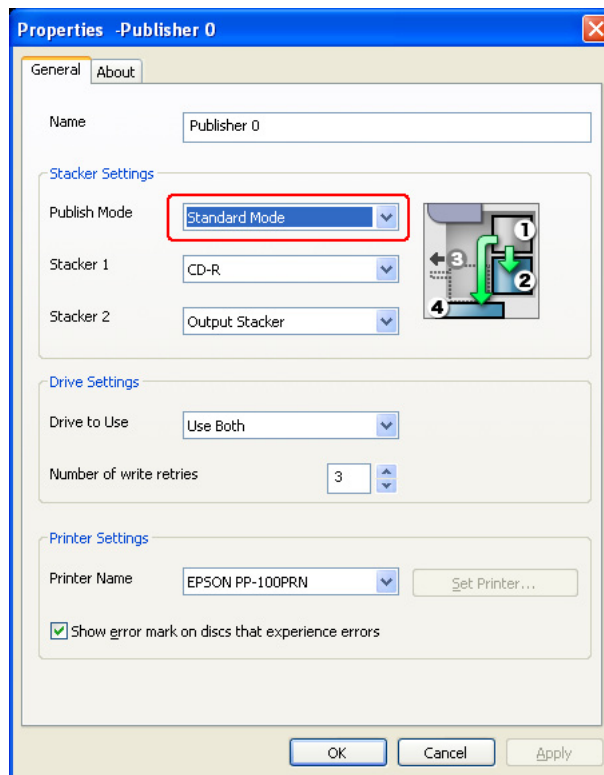
Making the stacker settings

The following instructions explain how to set stackers.

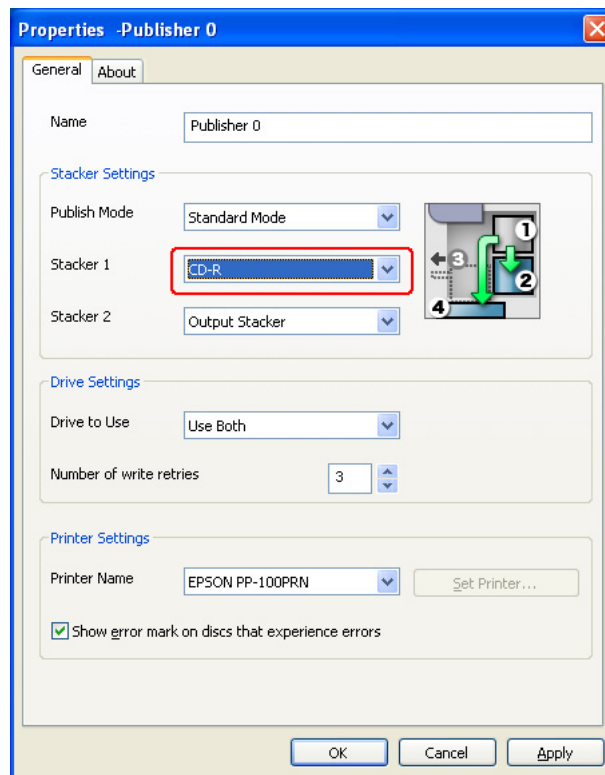
1. Make sure that the product is turned on, and the product and computer are properly connected.
2. Click the **Properties** icon on the Publish screen of EPSON Total Disc Maker or EPSON Total Disc Setup.



3. Select **Standard Mode** for Publish Mode.



4. Select the type of discs that you loaded into the stacker.



5. Click **OK**.

Publishing Discs

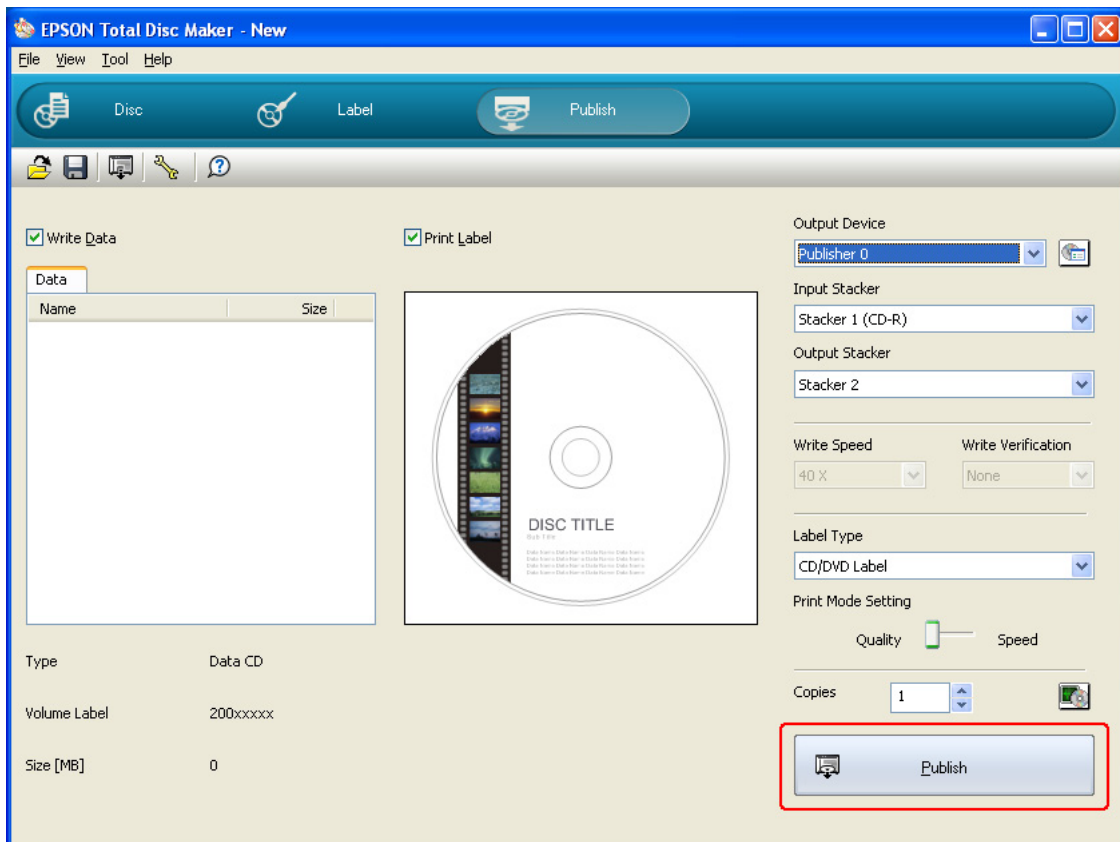
The following instructions explain how to publish CDs/DVDs.

1. Make the publish settings on the Publish screen of EPSON Total Disc Maker. For details, see Help for EPSON Total Disc Maker.

Note:

To access *Help for EPSON Total Disc Maker*, select **Help** from the Help menu.

2. Click the **Publish** button.



Caution:

- ❑ Do not open the disc cover while the product is publishing discs, unless the application instructs to add or remove discs. This may affect write quality or print quality. Also, do not put your hands inside the product while beeping as arm is still moving.
- ❑ Beep will sound if you open disc cover while running a job, and the job will pause. Closing the disc cover automatically resume the job.
- ❑ Do not operate the stacker while beeping, as the arm may be damaged.
- ❑ If you need to open the disc cover, pause or cancel your job before opening the disc cover.
- ❑ Depending on the disc or the computer used, writing speed may become slower than the set speed.
- ❑ Depending on the disc used, the recommended writing speed of the disc cannot be used. In this case, reduce the writing speed. Especially with DVD±R DL, it is recommended to write with slow speed.

Note:

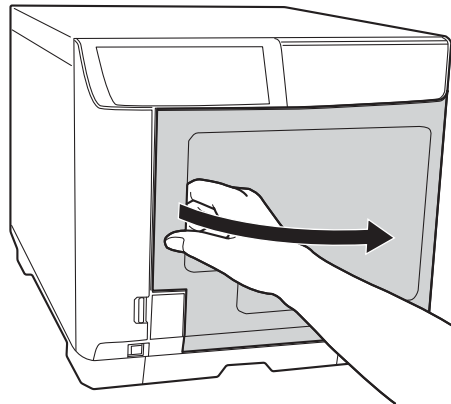
If Windows shuts down while processing a job, the job may be resumed when restarting Windows next time.

External Output Mode

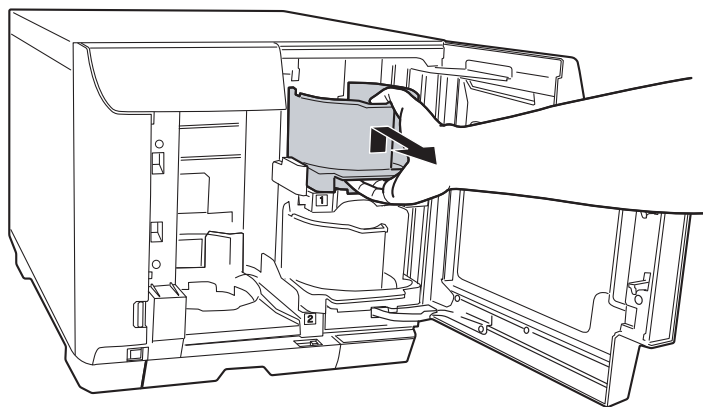
Loading CDs/DVDs

Follow the steps below to load CDs/DVDs.

1. Open the disc cover.

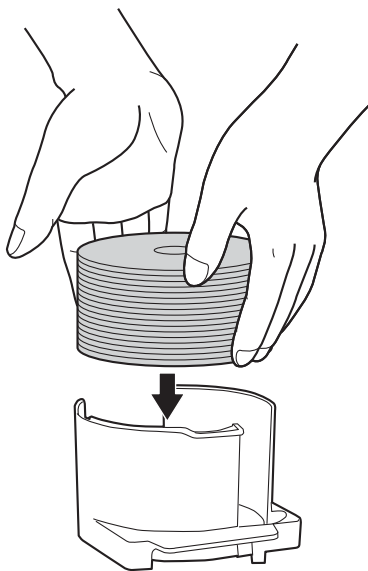


2. Take out Stacker 1.



3. Fan a stack of discs to prevent them from sticking together. Be careful not to scratch the recording side of the disc.

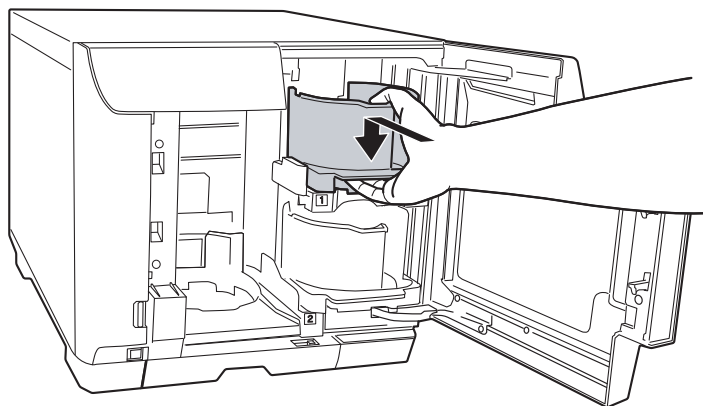
4. Load CDs/DVDs into Stacker 1 with the printable side facing up.



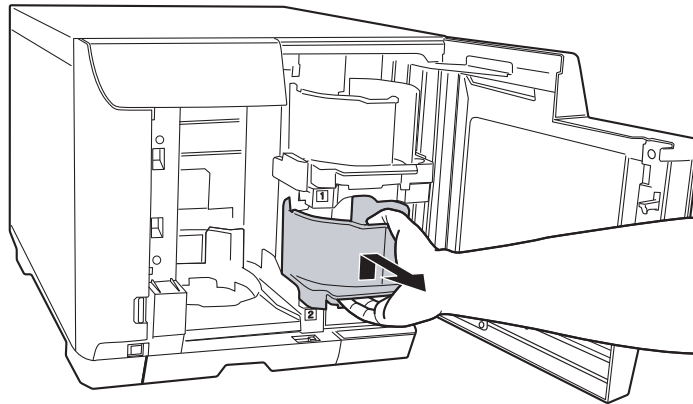
Caution:

Do not load the discs above the red line marked on the stacker; otherwise, the discs or product may be damaged.

5. Insert Stacker 1.

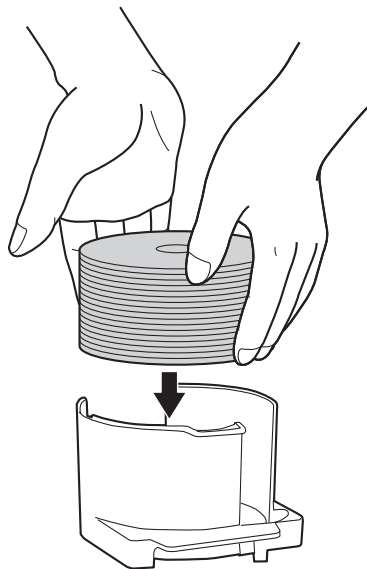


6. Take out Stacker 2.



7. Fan a stack of discs to prevent them from sticking together. Be careful not to scratch the recording side of the disc.

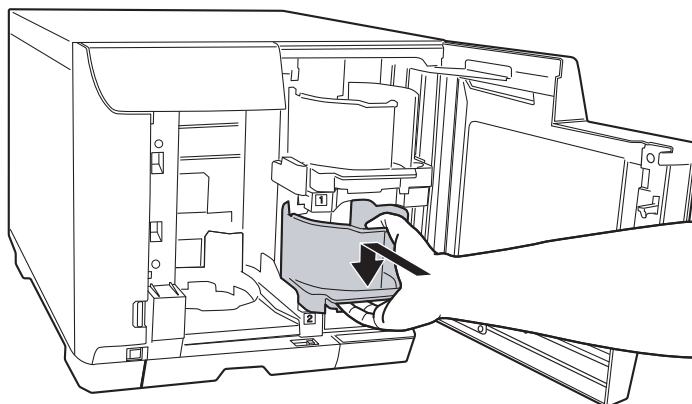
8. Load CDs/DVDs into Stacker 2 with the printable side facing up.



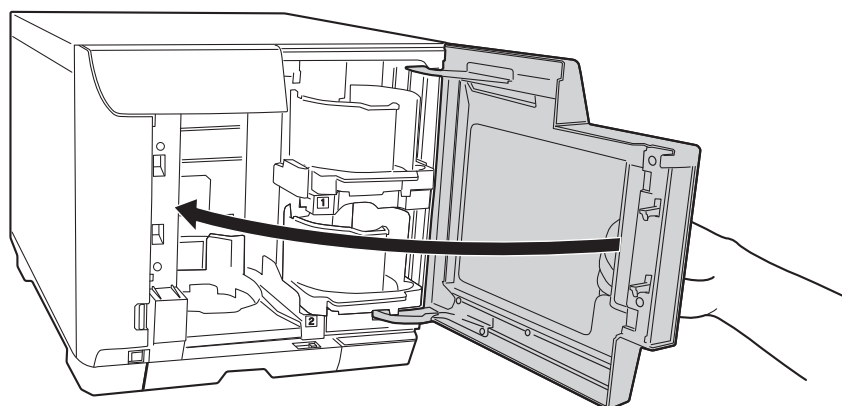
Caution:

Do not load the discs above the red line marked on the stacker; otherwise, the discs or product may be damaged.

9. Insert Stacker 2.



10. Close the disc cover.



Caution:

- Do not yank Stacker 4 when pulling it out to remove published discs.
- Do not remove Stacker 4 when the Stacker 4 LED is flashing fast. Discs may be damaged.
- Do not install Stacker 3.

Making disc settings and creating labels

After loading discs into the stackers, access EPSON Total Disc Maker to make settings for writing discs, and create the labels printed on the discs.

Accessing EPSON Total Disc Maker

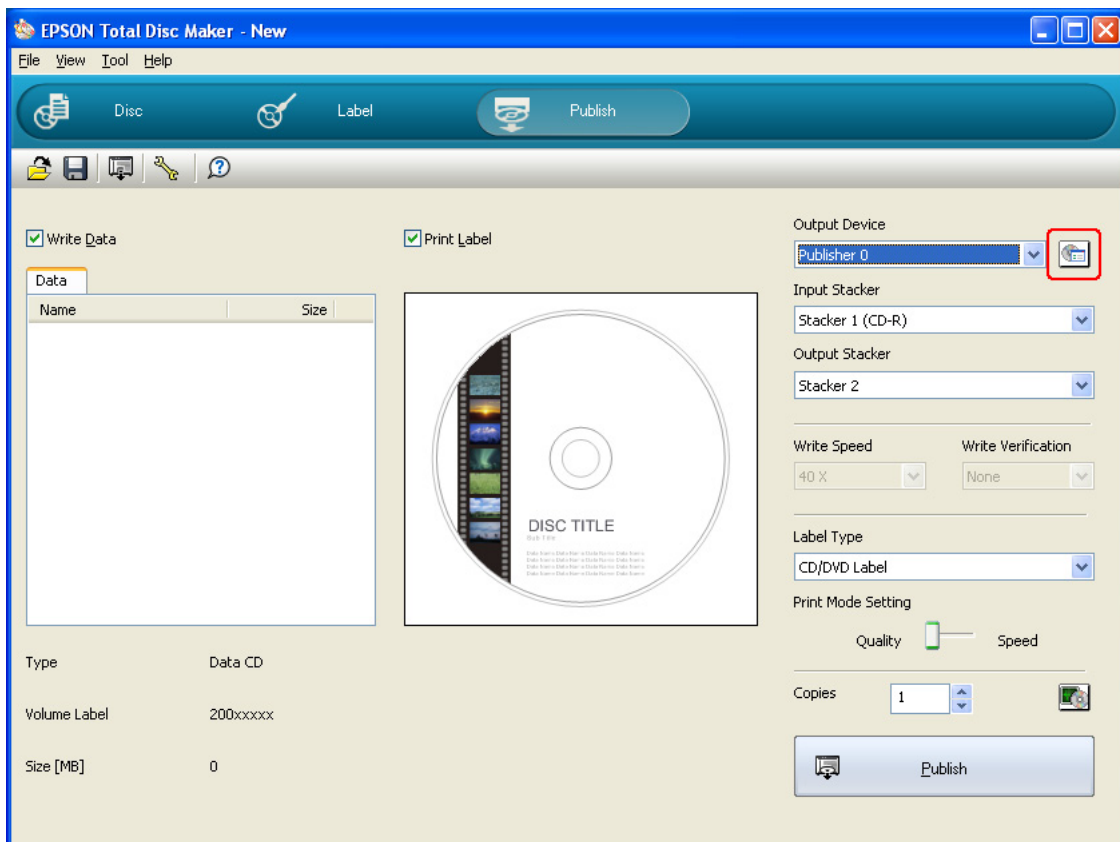
Click **Start**, point to **All Programs** (Windows XP) or **Programs** (Windows 2000), point to **EPSON Total Disc Maker**, and then click **EPSON Total Disc Maker**.

To learn how to use EPSON Total Disc Maker, go to the Help menu.

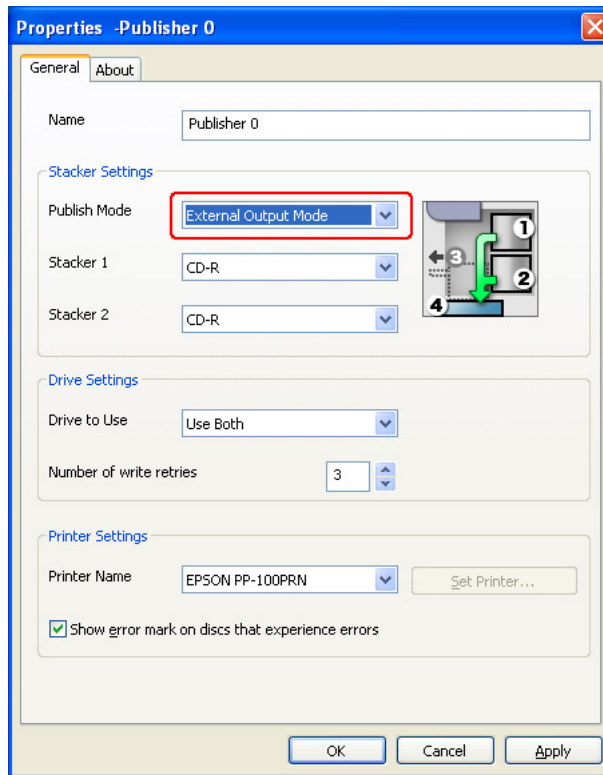
Making the stacker settings

The following instructions explain how to set stackers.

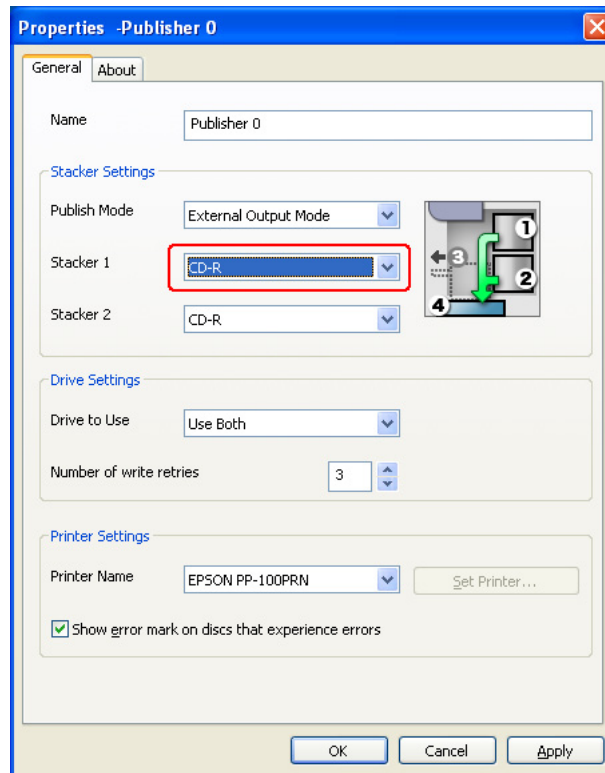
1. Make sure the product is turned on, and the product and computer are properly connected.
2. Click the **Properties** icon on the Publish screen of EPSON Total Disc Maker or EPSON Total Disc Setup.



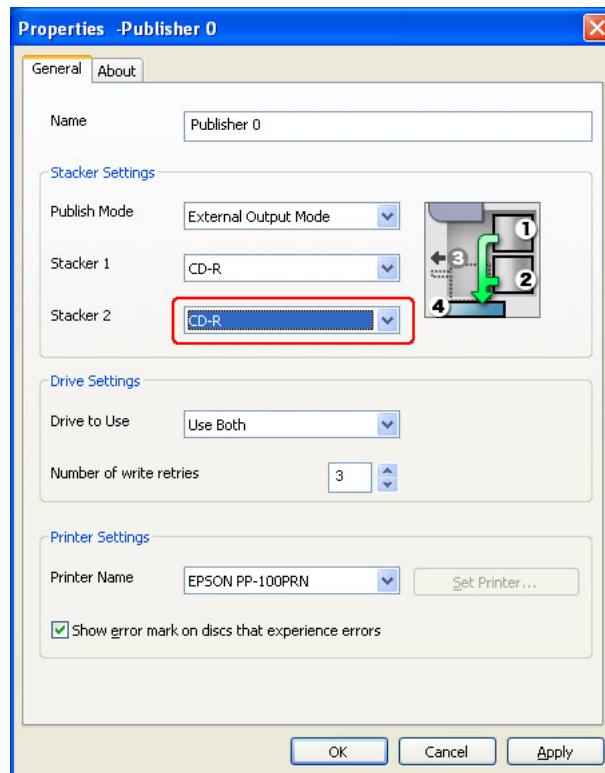
3. Select **External Output Mode** for Publish Mode.



4. Select the type of discs that you loaded into Stacker 1.



5. Select the type of discs that you loaded into Stacker 2.



6. Click **OK**.

Publishing Discs

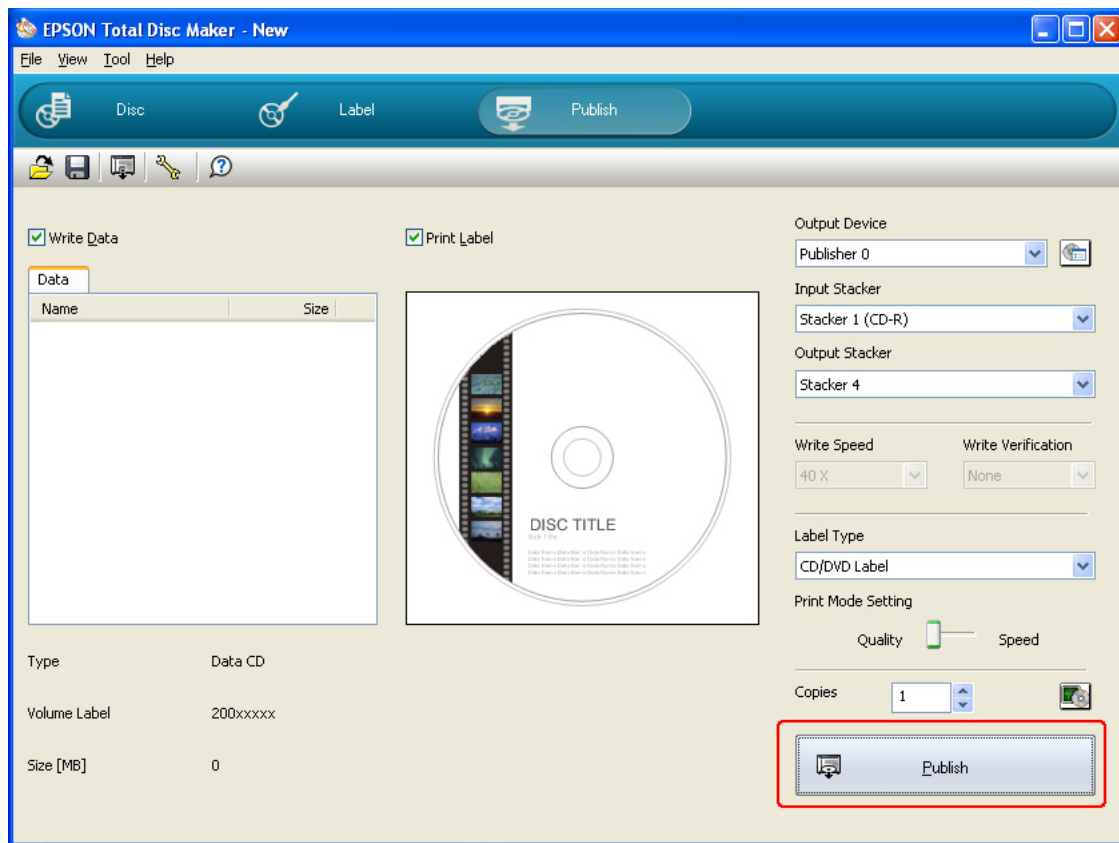
The following instructions explain how to publish CDs/DVDs.

1. Make the publish settings on the Publish screen of EPSON Total Disc Maker. For details, see Help for EPSON Total Disc Maker.

Note:

To access *Help for EPSON Total Disc Maker*, select **Help** from the Help menu.

2. Click the **Publish** button.



Caution:

- ❑ *Do not open the disc cover while the product is publishing discs, unless the application instructs to add or remove discs. This may affect write quality or print quality. Also, for safety reasons, do not put your hands inside the product while beeping as arm is still moving.*
- ❑ *Beep will sound if you open disc cover while running a job, and the job will pause. Closing the disc cover automatically resume the job.*
- ❑ *Do not operate the stacker while beeping, as the arm may be damaged.*
- ❑ *If you need to open the disc cover, pause or cancel your job before opening the disc cover.*
- ❑ *Depending on the disc or the computer used, writing speed may become slower than the set speed.*
- ❑ *Depending on the disc used, the recommended writing speed of the disc cannot be used. In this case, reduce the writing speed. Especially with DVD±R DL, it is recommended to write with slow speed.*

Note:

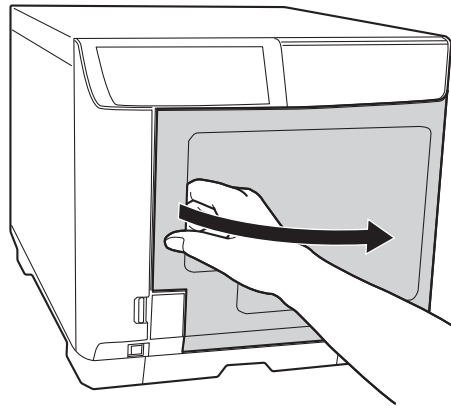
If Windows shuts down while processing a job, the job may be resumed when restarting Windows next time.

Batch Mode

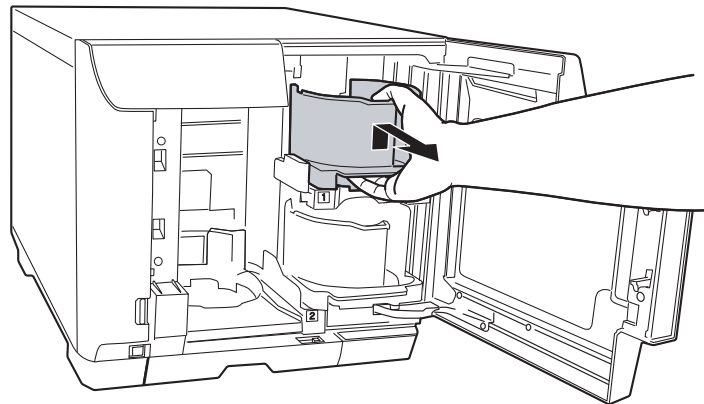
Loading CDs/DVDs

Follow the steps below to load CDs/DVDs.

1. Open the disc cover.

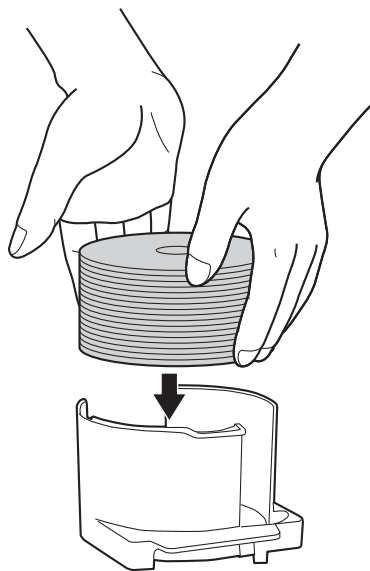


2. Take out Stacker 1.



3. Fan a stack of discs to prevent them from sticking together. Be careful not to scratch the recording side of the disc.

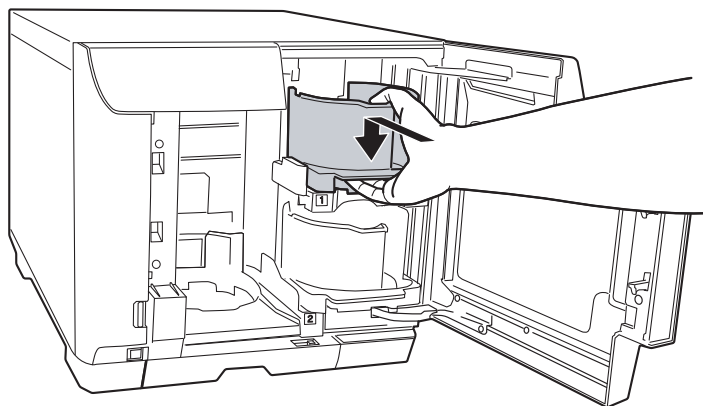
4. Load CDs/DVDs into Stacker 1 with the printable side facing up.



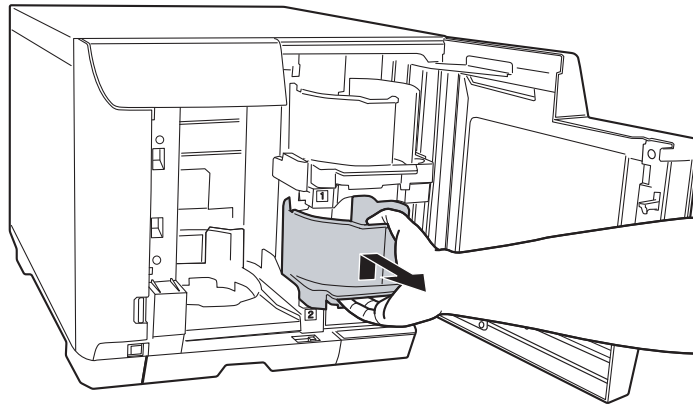
Caution:

Do not load the discs above the red line marked on the stacker; otherwise, the discs or product may be damaged.

5. Insert Stacker 1.

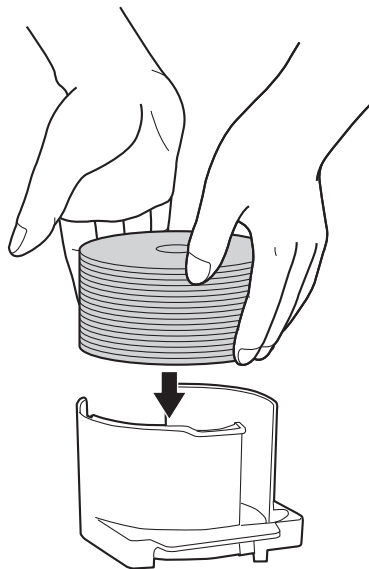


6. Take out Stacker 2.



7. Fan a stack of discs to prevent them from sticking together. Be careful not to scratch the recording side of the disc.

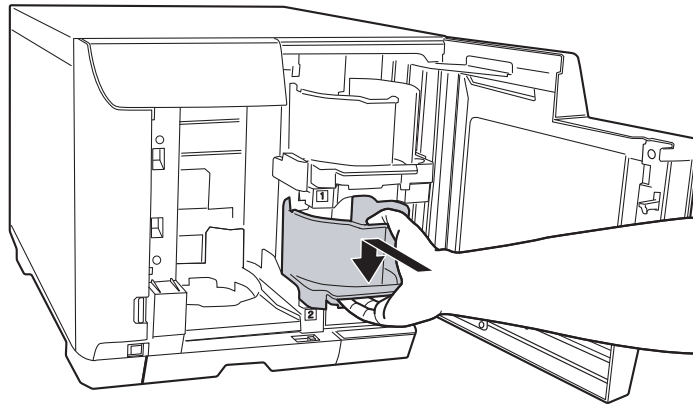
8. Load CDs/DVDs into Stacker 2 with the printable side facing up.



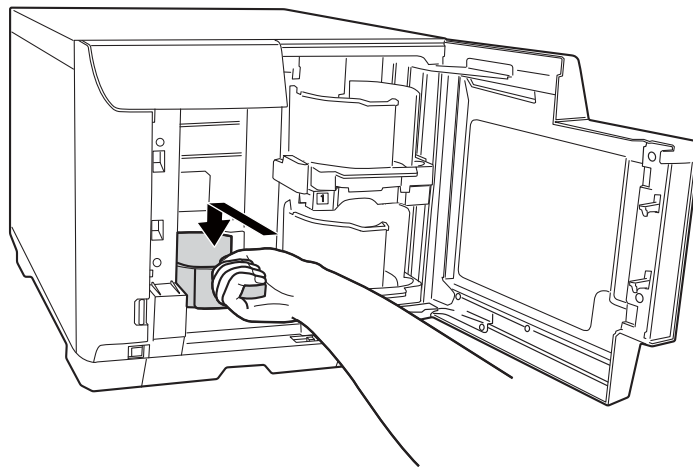
Caution:

Do not load the discs above the red line marked on the stacker; otherwise, the discs or product may be damaged.

9. Insert Stacker 2.

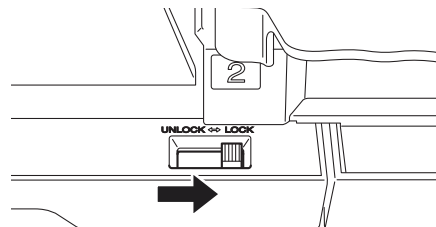


10. Insert Stacker 3.

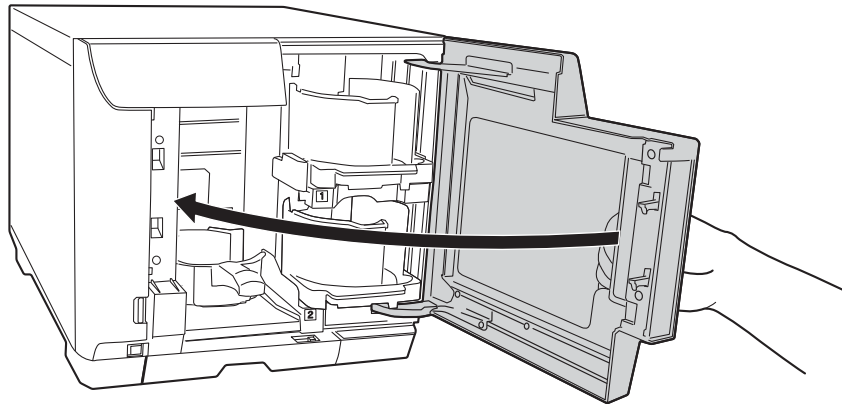


Caution:

- ❑ Make sure that there are no discs in Stacker 3 and 4.
- ❑ Do not pull out Stacker 4. Be sure to lock the lock lever located on Stacker 4 .



11. Close the disc cover.



Making disc settings and creating labels

After loading discs into the stackers, access EPSON Total Disc Maker to make settings for writing discs, and create the labels printed on the discs.

Accessing EPSON Total Disc Maker

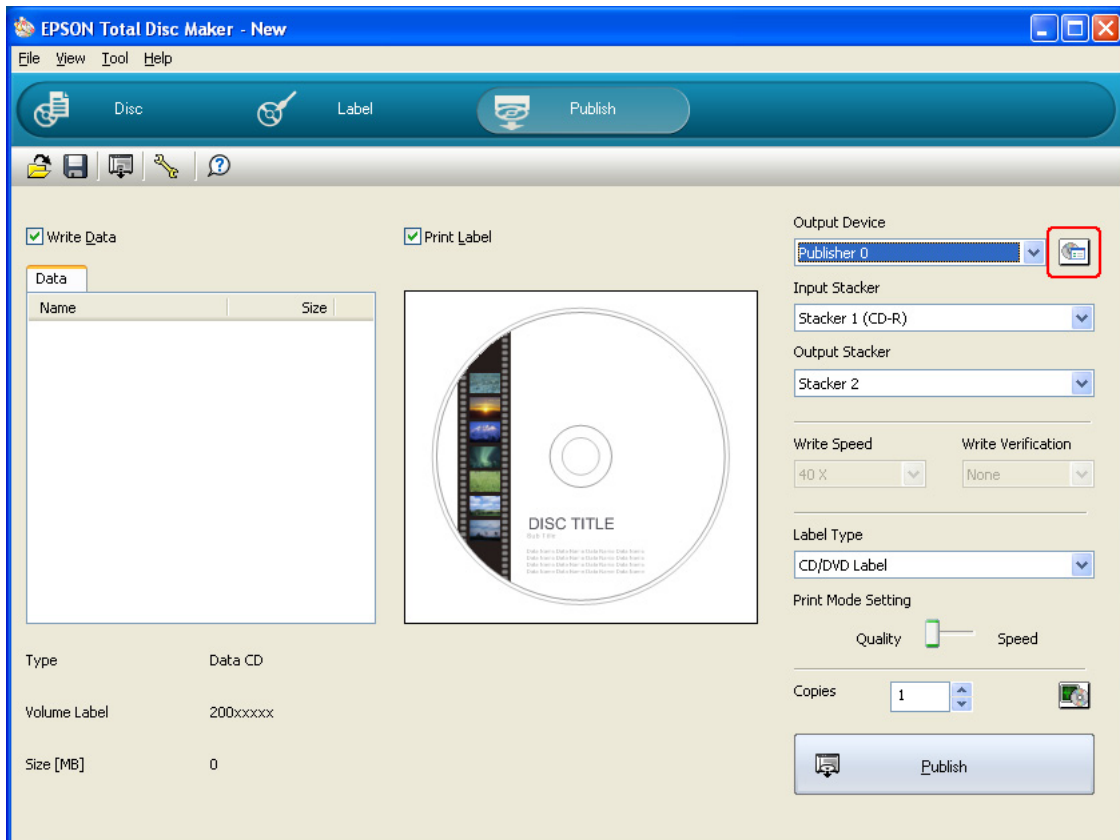
Click **Start**, point to **All Programs** (Windows XP) or **Programs** (Windows 2000), point to **EPSON Total Disc Maker**, and then click **EPSON Total Disc Maker**.

To learn how to use EPSON Total Disc Maker, go to the Help menu.

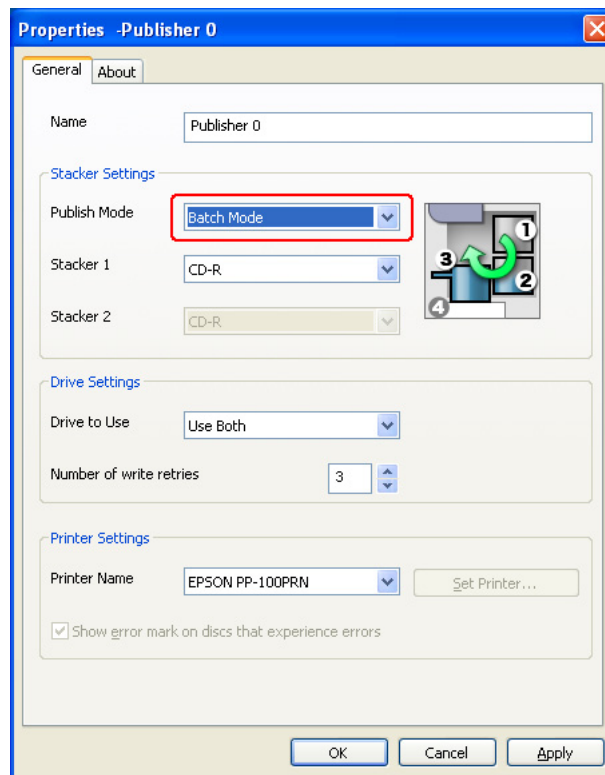
Making the stacker settings

The following instructions explain how to set stackers.

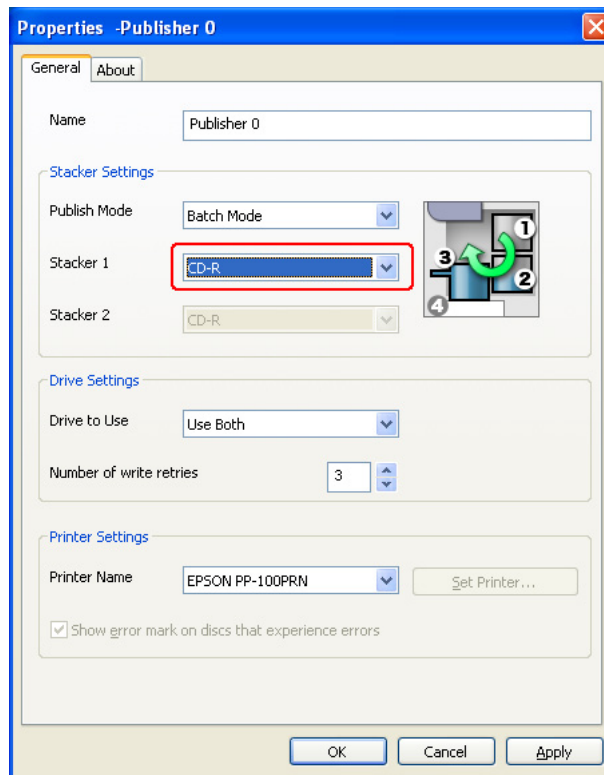
1. Make sure that the product is turned on, and the product and computer are properly connected.
2. Click the **Properties** icon on the Publish screen of EPSON Total Disc Maker or EPSON Total Disc Setup.



3. Select **Batch Mode** for Publish Mode.



4. Select the type of discs that you loaded into the stacker.



5. Click **OK**.

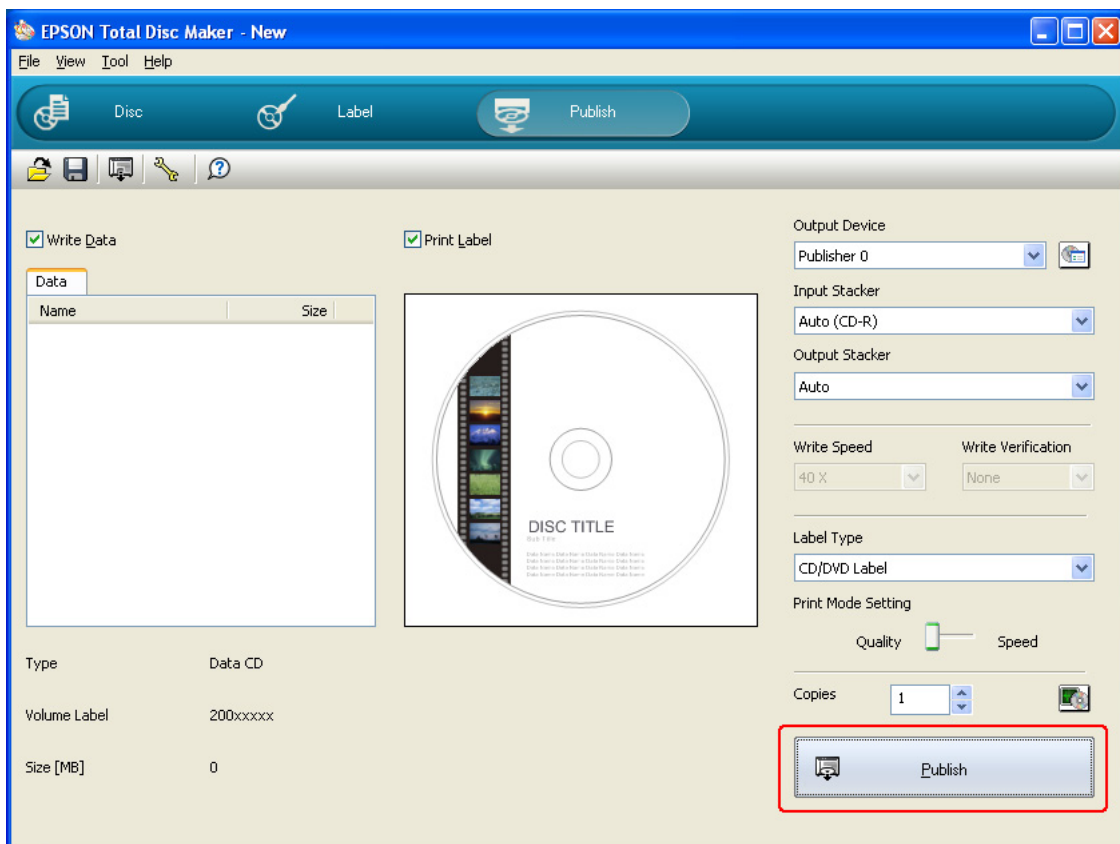
Publishing Discs

1. Make the publish settings on the Publish screen of EPSON Total Disc Maker. For details, see Help for EPSON Total Disc Maker.

Note:

To access Help for EPSON Total Disc Maker, select **Help** from the Help menu.

2. Click the **Publish** button.



Caution:

- ❑ Do not open the covers while the product is publishing discs, unless the application instructs to add or remove discs. This may affect write quality or print quality. Also, for safety reasons, do not put your hands inside the product while beeping as arm is still moving.
- ❑ Beep will sound if you open disc cover while running a job, and the job will pause. Closing the disc cover automatically resume the job.
- ❑ Do not operate the stacker while beeping, as the arm may be damaged.
- ❑ If you need to open the covers, pause or cancel your job before opening the disc cover.
- ❑ Depending on the disc or the computer used, writing speed may become slower than the set speed.
- ❑ Depending on the disc used, the recommended writing speed of the disc cannot be used. In this case, reduce the writing speed. Especially with DVD±R DL, it is recommended to write with slow speed.

Note:

If Windows shuts down while processing a job, the job may be resumed when restarting Windows next time.

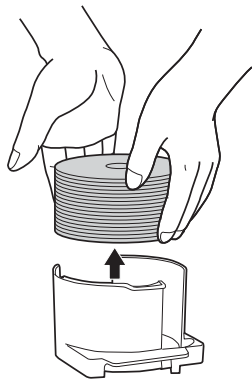
Taking Out Discs

Follow the steps below to take out the published discs from the stackers.

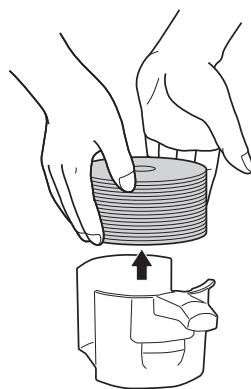
1. Open the disc cover (only for output to Stacker 2 or 3), and take out the stacker.
2. Take out the published discs from the stacker. The output stacker differs according to the publishing mode. Refer to the following table.

Output stacker	Mode	Number of discs
Stacker 2	Standard mode Batch mode	Up to about 50 discs
Stacker 3	Batch mode	Up to about 50 discs
Stacker 4	Standard mode External Output mode	Up to about 5 discs

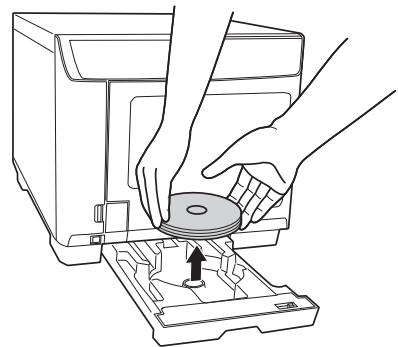
Stacker 2



Stacker 3



Stacker 4



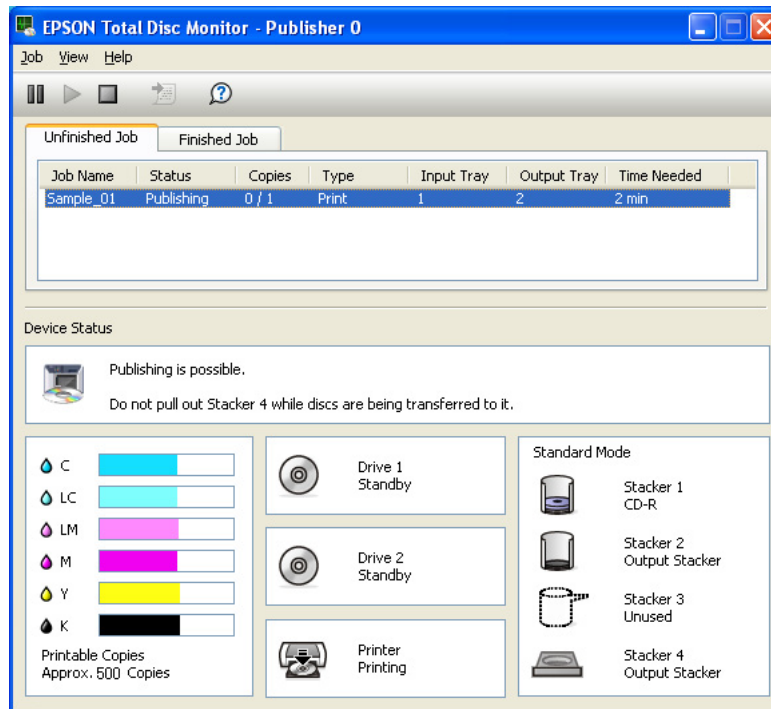
Note:

- Be sure to let CDs and DVDs to dry completely before using them or touching the printed surface. Allow Epson specified discs to dry for at least 1 hour and other types of discs for at least 24 hours.
- If the print position is misaligned, adjust it using the printer driver. For details, refer to the printer driver Help.
- If the ink smears, adjust the color saturation. For details, refer to the printer driver Help.

Canceling Publishing

If you need to cancel publishing, follow the instructions below.

When you start publishing, the screen of EPSON Total Disc Monitor appears on your computer screen. Select the job you want to cancel in the Unfinished Job list, and then select **Cancel Job** from the Job menu.



Replacing Ink Cartridges

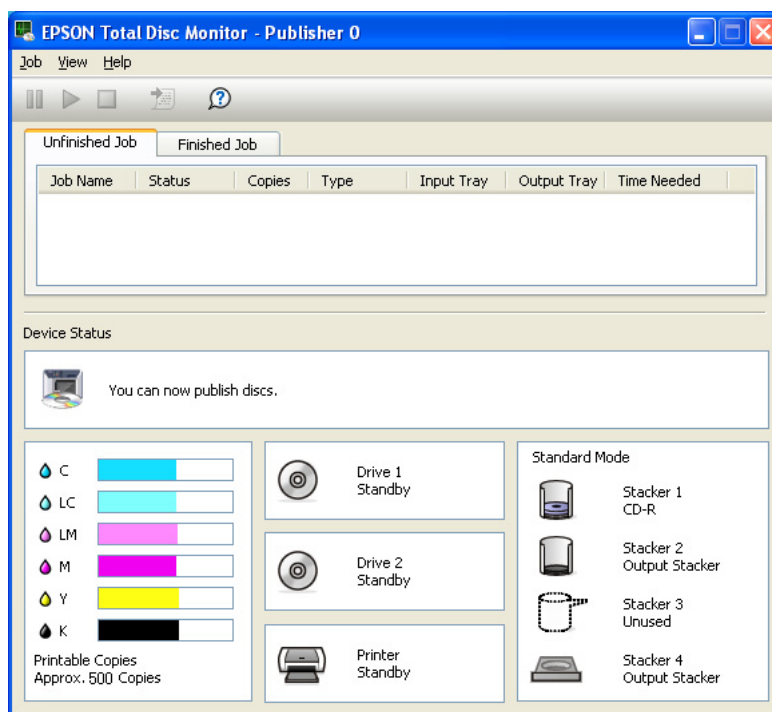
Checking the Ink Cartridge Status

Note:

- ❑ *Epson cannot guarantee the quality or reliability of non-genuine ink. If non-genuine ink cartridges are installed, the ink cartridge status may not be displayed.*
- ❑ *When an ink cartridge is running low, the status is displayed on the EPSON Total Disc Monitor.*

To check the ink cartridge status, do the following:

- ❑ EPSON Total Disc Monitor appears automatically when you start a job. You can check the ink cartridge status from this window. You can also run EPSON Total Disc Monitor from the Start menu.
 - ➔ See “Using EPSON Total Disc Monitor” on page 76.



Note:

If any of the ink cartridges installed in the product is broken, incompatible with the product model, or improperly installed, EPSON Total Disc Monitor will not display an accurate calculation of the ink cartridge status. Be sure to replace or reinstall any such ink cartridge with an ink cartridge supported by the product.

Precautions on Ink Cartridge Replacement

Read all the instructions in this section before replacing the ink cartridges.

- ❑ Install all six ink cartridges. Disc publishing (write/print) cannot be done even if only one ink is missing.
- ❑ This product uses ink cartridges equipped with an IC chip that monitors the amount of ink used by each cartridge. Cartridges are usable even if they are removed and reinserted. However, some ink is consumed each time cartridges are inserted, because the product automatically checks their reliability.
- ❑ The valve in the ink supply port is designed to contain any excess ink that may be released. However, careful handling is recommended. Do not touch the supply port of the ink cartridge or its surrounding area.
- ❑ Ink is consumed during the following operations: ink charging when an ink cartridge is installed, print head cleaning, and automatic cleaning executed periodically.
- ❑ For maximum ink efficiency, only remove an ink cartridge when you are ready to replace it. Ink cartridges with low ink status may not be used when reinserted.
- ❑ Do not refill the ink cartridges. Other products not manufactured by Epson may cause damage that is not covered by Epson's warranties, and under certain circumstances, may cause erratic product behavior.
- ❑ Keep ink cartridges out of the reach of children. Do not allow children to drink from or handle the cartridges.
- ❑ Be careful when you handle used ink cartridges, as there may be some ink around the ink supply port. If ink gets on your skin, wash the area thoroughly with soap and water. If ink gets into your eyes, flush them immediately with water. If discomfort or vision problems continue after a thorough flushing, see a doctor immediately.
- ❑ Epson recommends the use of genuine Epson ink cartridges. The use of non-genuine ink may cause damage that is not covered by Epson's warranties, and under certain circumstances, may cause erratic product behavior.
- ❑ Do not open the ink cartridge package until you are ready to install it in the product.
- ❑ Use ink cartridges within six months after opening the packages.
- ❑ Leave the old cartridge installed in the product until you have obtained a replacement; otherwise, ink remaining in the print head nozzles may dry out.



- ❑ You cannot continue printing with one ink cartridge after it has reached its replacement time, even if the other cartridges still contain ink. Before printing, replace the used cartridge.
- ❑ Do not turn off the product or open ink cartridge cover while loading ink (power light is flashing). Opening of covers may cause the ink to re-load, resulting in more of the ink being consumed. Also, normal printing may be disturbed.
- ❑ If the ink cartridge is not recognized even it is correctly installed, dirt may be attached to the green circuit board. Remove the cartridge and wipe the circuit board with a soft cloth and install it again.
- ❑ Color adjustment of the product is based on the use of genuine ink cartridges. Use of non-genuine ink cartridges may result in reduced print quality and the product performance may not be optimum.
- ❑ When the ink lamp is flashing or lit ink cartridge is not correctly installed. Check if it is installed correctly.
- ❑ If installing ink cartridge does not provide normal printing, press cleaning button for 3 seconds. If it does not resolve the problem, repeat the process for 1 or 2 times.
- ❑ By turning off the product using the power button, print head will be automatically covered to prevent ink from drying. When not in use after installing ink cartridges, make sure to turn off using the power button. Do not unplug power cord or shut down breaker while the power is on.
- ❑ When moving or transporting product after installing ink cartridges, move or transport with ink cartridges installed.



Replacing an Ink Cartridge

Note:

- ❑ *Do not open the ink cartridge package until you are ready to install it in the product.*
- ❑ *To confirm the status of each ink cartridge, see the following section:*
- ➔ See “Using EPSON Total Disc Monitor” on page 76.

This table describes the status of the lights and the actions you need to take.



Lights	Action
	Ink is low. Obtain a replacement ink cartridge.
	The ink cartridge has reached its replacement time. Replace the used ink cartridge with a new one.

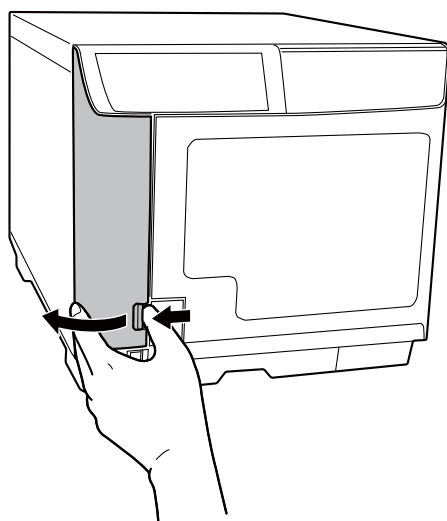
 : flashing  : on

To replace an ink cartridge, follow the steps below.

 **Caution:** Do not remove the cartridge from the product until you are ready to replace it with another.

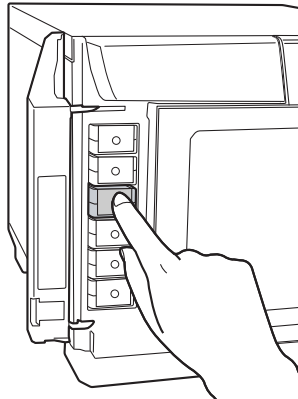
Note:
The illustrations show replacement of the light magenta ink cartridge, but the instructions are the same for all the cartridges.

1. Make sure that the   power light is on, but not flashing.
2. Open the ink cartridge cover.

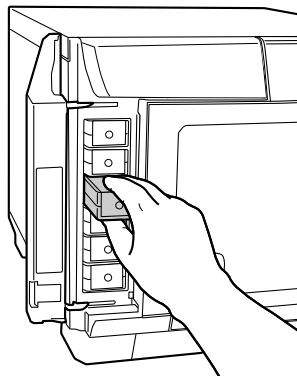


Note:
Wait for 4 seconds or more before removing the ink cartridge. Ink may squirt.

3. Push the used cartridge so the cartridge is slightly pushed out.



4. Carefully pull the used cartridge straight out of the slot. Dispose of it properly.

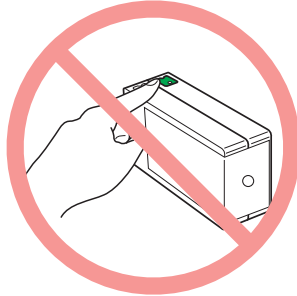


5. Remove the new ink cartridge from the package.



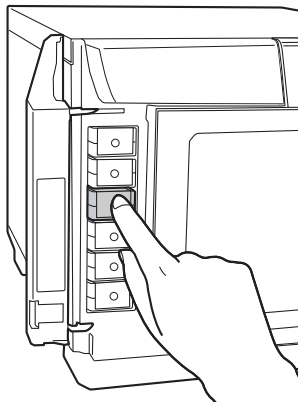
Caution:

- ❑ Do not touch the green IC chip on the side of the cartridge. This can damage the ink cartridge.

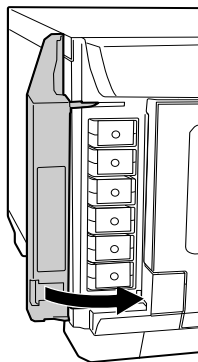


- ❑ Always install an ink cartridge immediately after removing the old cartridge. If the cartridge is not installed promptly, the print head may dry out and be unable to print.
- ❑ Do not refill the ink cartridge. Other products not manufactured by Epson may cause damage that is not covered by Epson's warranties, and under certain circumstances, may cause erratic product behavior.

6. Place the new ink cartridge into the slot. Then push the ink cartridge until it clicks into place.



7. When you are finished replacing cartridges, close the ink cartridge cover.



Checking the Print Head Nozzles

If you find that the printout is unexpectedly faint or that dots are missing, you may be able to identify the problem by checking the print head nozzles.

You can check the print head nozzles from your computer by using the Nozzle Check utility.

Using the Nozzle Check utility

Follow the steps below to use the Nozzle Check utility.

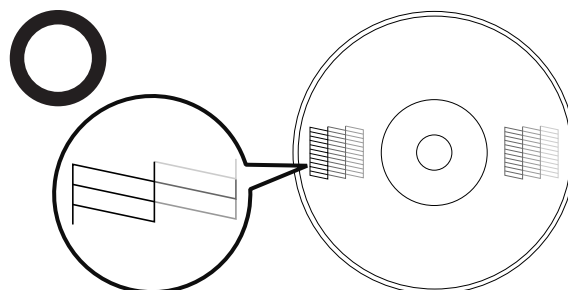
1. Make sure that an unprinted disc is installed in Stacker 1.
2. Make sure that no lights are indicating errors, and that the disc cover is closed.
3. Access the printer driver.

See “Accessing the printer driver” on page 16.

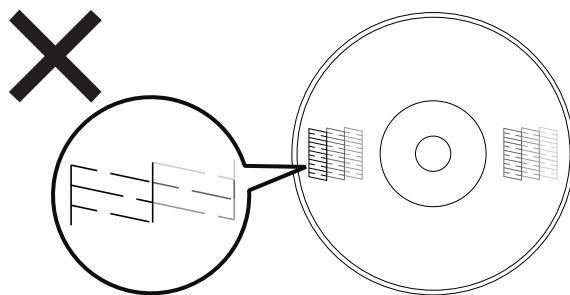
4. Click the **Utility** tab, then click the **Nozzle Check** button.
5. Follow the on-screen instructions.

Below are two sample nozzle check patterns.

Compare the quality of the printed check page with the sample shown below. If there are no print quality problems, such as gaps or missing segments in the test lines, the print head is fine.



If any segment of the printed lines is missing, as shown below, this could mean a clogged ink nozzle.



➔ See “Cleaning the Print Head” on page 60

Cleaning the Print Head

If you find that the printout is unexpectedly faint or that dots are missing, you may be able to solve these problems by cleaning the print head, which ensures that the nozzles are delivering ink properly.

You can clean the print head from your computer using the Head Cleaning utility in the printer driver or from the product by using the buttons.



Caution:

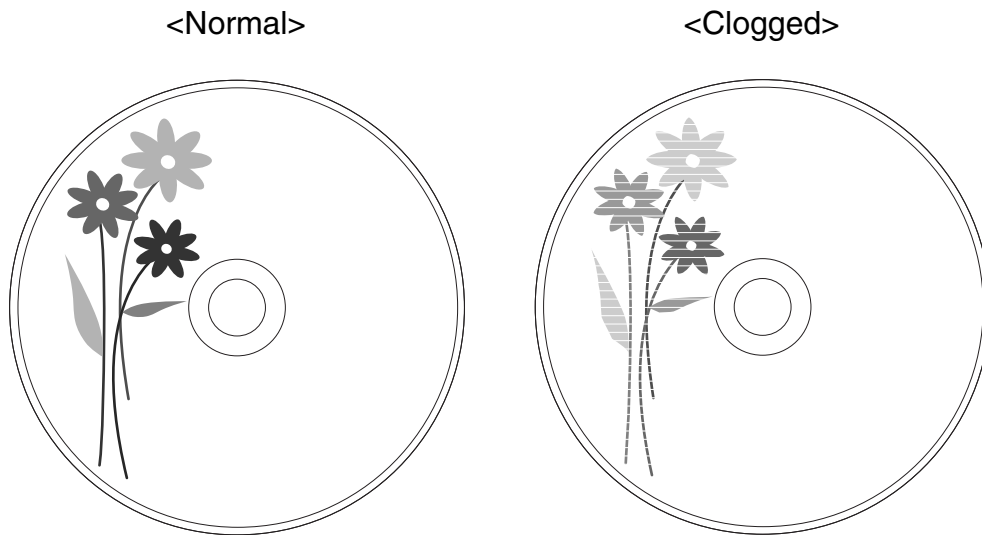
- Do not open ink cartridge cover while cleaning print head. Print head cleaning will stop if ink cartridge cover is opened.*

- Print head cleaning will consume ink. Excess print head cleaning will result in reduction of ink cartridge life.*

Note:

- Clean the print head only if print quality declines; for example, if the printout is blurry or the color is incorrect or missing.*
- Use the Nozzle Check utility first to confirm that the print head needs to be cleaned. This saves ink.*
- When ink is low you may not be able to clean the print head. When ink has reached its replacement time, you cannot clean the print head. Replace the appropriate ink cartridge first.*

Using the Head Cleaning utility




Follow the steps below to clean the print head using the Head Cleaning utility.

1. Make sure the product is turned on.
2. Make sure that no lights are indicating errors, and that the disc cover is closed.
3. Access the printer driver.


See “Accessing the printer driver” on page 16.

4. Click the **Utility** tab, then click the **Head Cleaning** button.
5. Follow the on-screen instructions.

The  power light flashes while the product performs the cleaning cycle.



Caution:


Never turn off the product while the  power light is flashing. Doing so may damage the product.


Note:

- If print quality has not improved after repeating this procedure about four times, turn the product off and wait for at least six hours. Then run the nozzle check again and repeat the head cleaning if necessary.
- If the print quality still has not improved, at least one of your ink cartridges may be old or damaged and may need to be replaced.
➔ See “Replacing an Ink Cartridge” on page 54.

Using the product buttons


Follow the steps below to clean the print head using the product buttons.


1. Make sure the PC is turned on.
2. Make sure the product is turned on.
3. Make sure that no lights are indicating errors, and that the disc cover is closed.
4. Press and hold down the  Cleaning button for three seconds.

The product starts cleaning the print head and the  power light begins flashing.



Caution:

Never turn off the product while the  power light is flashing. Doing so may damage the product.

5. When the  power light stops flashing, print a nozzle check pattern to confirm that the head is clean.
➔ See “Checking the Print Head Nozzles” on page 59.

Note:

- If print quality has not improved after repeating this procedure about four times, turn the product off and wait for at least six hours. Then run the nozzle check again and repeat the head cleaning if necessary.*
- If the print quality still has not improved, at least one of your ink cartridges may be old or damaged and may need to be replaced.
➔ See “Replacing an Ink Cartridge” on page 54.*

Aligning the Print Head

If you notice a misalignment of vertical lines or horizontal banding, you may be able to solve this problem by using the Print Head Alignment utility in your printer driver.

Note:

Disk thickness may vary depending on products. Using discs with various thickness may result in misalignment of the print head. Use the Print Head Alignment utility to check and adjust the print head alignment. It is recommended to use the same product and type of discs when publishing several discs.

Using the Print Head Alignment utility

Follow the steps below to align the print head using the Print Head Alignment utility.

1. Make sure that an unprinted disc is inserted in Stacker 1.
2. Make sure that no lights are indicating errors, and that the disc cover is closed.
3. Access the printer driver.

See “Accessing the printer driver” on page 16.

4. Click the **Utility** tab, then click the **Print Head Alignment** button.
5. Follow the on-screen instructions to align the print head.



Caution:

- ❑ *By entering value at confirmation screen after initial adjustment, adjustment will be done using the initial value and entered value added together. To clear adjustment value, select Reset and click Exit.*

- ❑ *If the label printing surface is not aligned with center of the disc after aligning the print head as described above, print will appear out of alignment compared to printing surface.*

Correcting the Printing Position

If you notice a misalignment of vertical printing position, you may be able to solve this problem by using the Correcting the Printing Position utility in your printer driver.

Using the Correcting the Printing Position utility

Follow the steps below to adjust the vertical and horizontal printing position using the Correcting the Printing Position utility.

1. Make sure that a dummy disc or blank is inserted in Stacker 1.
2. Make sure that no lights are indicating errors, and that the disc cover is closed.
3. Access the printer driver.

See “Accessing the printer driver” on page 16.

4. Click the **Utility** tab, then click the **Correcting the Printing Position** button.
5. Follow the on-screen instructions to adjust the vertical and horizontal printing position.

Cleaning Your Product

Cleaning the exterior of the product

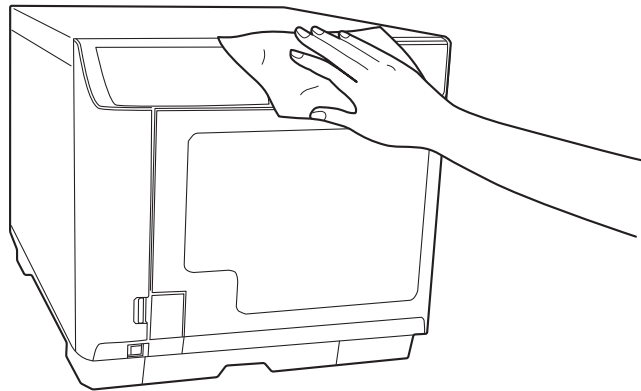
To keep your product operating at its best, clean it thoroughly several times a year by using the following procedure.



Caution:

- ❑ *Never use alcohol or thinner to clean the product. These chemicals can damage the product.*
 - ❑ *Take care to prevent water from getting inside the product. If moisture, dirt, or other matter gets inside of the product, besides affecting print quality, it may cause the electric circuits to short.*
1. Make sure the product is turned off and all the lights are off, and then unplug the power cord from the electrical outlet.
 2. Use a soft, clean cloth to carefully remove any dust or dirt.

If the dirt does not come off, clean it using a soft, clean cloth dampened with a mild detergent. Then, wipe the outside of the product dry with a dry, soft cloth.



Note:

- ❑ *After cleaning the product, close the disc cover and the Stacker 4 tray to protect the product from dust.*
- ❑ *Make sure to clean the filter that is located on the rear of the product at regular intervals. See the next section.*

Cleaning the interior of the product

To keep your printouts at their best, clean the inside by using the following procedure.

1. Make sure the product is turned off and all the lights are off, and then unplug the power cord from the electrical outlet.
2. Open the disc cover, and remove the stackers from the product.
3. Use a soft, clean cloth to carefully remove any dust or dirt from the stackers and inside of the product.
4. Place the stackers back in the position.



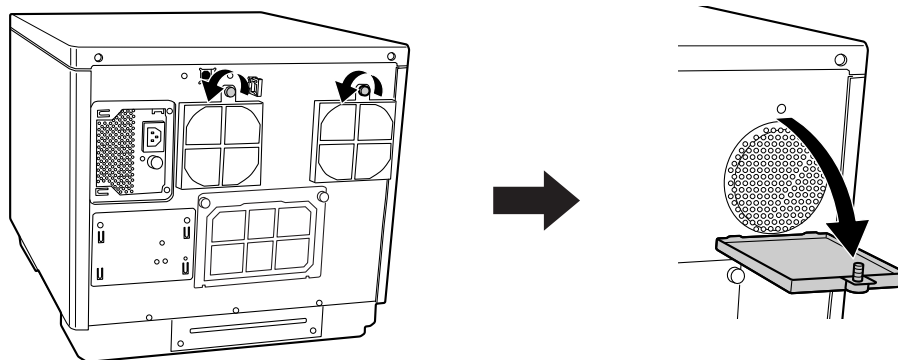
Caution:

- ❑ *Be careful to keep water away from the electronic components.*
- ❑ *Do not spray the inside of the product with lubricants.*
- ❑ *Dirt attached to Stacker 3 or 4 should be wiped clean with a soft cloth moistened with neutral detergent.*

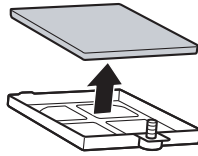
Cleaning the filter

Clean the filter located on the rear of the product once every six months.

1. Make sure the product is turned off and all the lights are off, and then unplug the power cord from the electrical outlet.
2. Loosen and remove the screws from the filter covers to open them.

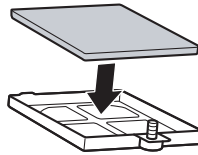


3. Remove the filters from the filter covers.

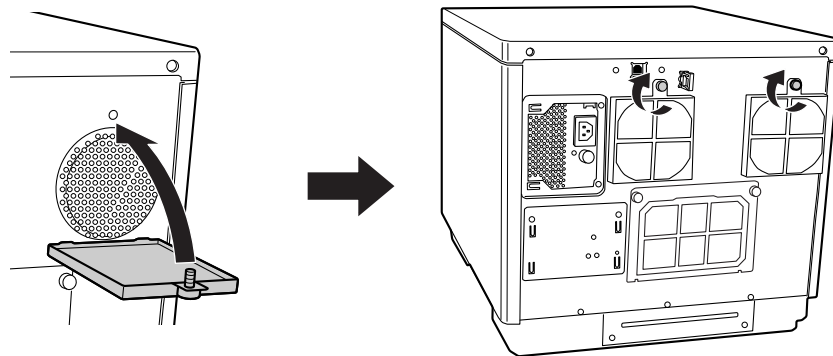


4. Use a vacuum-cleaner to clean the dust on the filters.

5. Place the filters back in position.



6. Tighten the screws to close the filter covers.



Caution:

Clean the filter periodically (once in every six months).

Transporting Your Product

If you need to transport your product some distance, carefully prepare and repack it. Be sure to use the original box and packing materials.



Warning:

The product is heavy, so have two people lift the product.



Caution:

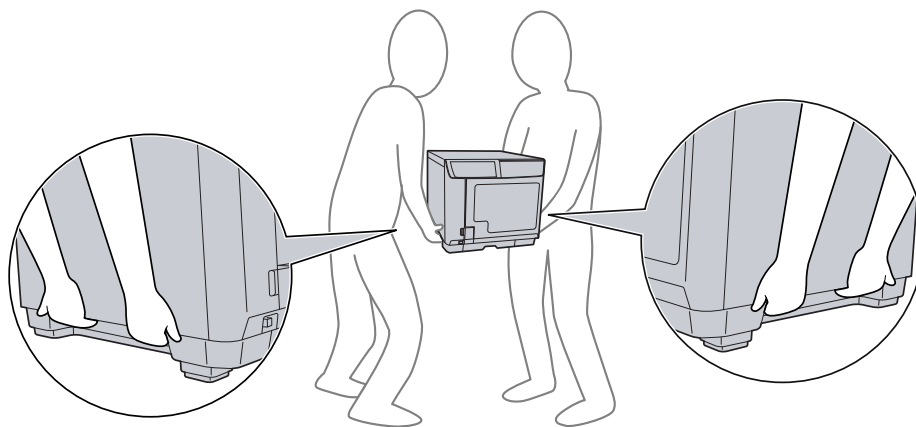
- ❑ *When storing or transporting the product, do not tilt it, stand it up vertically, or turn it upside down. If you need to transport the product, carefully prepare and repack it using the original box and packing materials in order to protect the product from shock.*

- ❑ *Leave the ink cartridges installed. Removing the cartridges can dry out the print head and may prevent the product from printing.*

1. Turn off the product and unplug its power cord.
2. Disconnect the interface cable.
3. Remove all discs from the stackers.
4. Open the ink cartridge cover. Secure the ink cartridges with tape, then close the ink cartridge cover.
5. Close the disc cover and Stacker 4 tray. Secure them with tape.
6. Attach the protective materials to both sides of the product.
7. Repack the product and accessories in the original box.

Note:

- ❑ *Keep the product level during transport.*
- ❑ *Be sure to remove the protective materials and tape from the product before using it again.*
- ❑ *Be sure to lift the product by the correct positions, as shown below.*



Diagnosing the Problem

Troubleshooting product problems is best handled in two steps: first diagnose the problem, then apply likely solutions until the problem is fixed.

The information that you need to diagnose and solve most common problems is provided by Help, the control panel, and the EPSON Total Disc Monitor utility. Refer to the appropriate section below.

If you have a specific problem relating to publishing quality, a problem not related to publishing quality, or a disc feeding problem, or if the product does not publish at all, refer to the appropriate section.

To solve a problem, you may need to cancel publishing.

➔ See “Canceling Publishing” on page 51.

Error indicators

You can identify many common problems using the lights on your product. If the product stops working and the lights are on or flashing, use the following table to diagnose the problem; then follow the recommended corrective measures.

Note:

Condition of indicator lights after error may change depending on the operation.

● : on, ○ : off, ◉ : flashing, ● (with vertical lines) : flashing fast

Error associated with cover

Lights								Conditions/Remedies
Power	Busy	Error	Ink	Stacker				
				1	2	3	4	
●	○	●	○	○	○	○	○	Disc cover or ink cartridge cover open Close covers.
								Job is paused since disc cover or ink cartridge cover was opened while processing the job Wait for the job to resume.

Error associated with disc transfer

Lights								Conditions/Remedies
Power	Busy	Error	Ink	Stacker				
				1	2	3	4	
●	○	●	○	○	○	○	○	<p>Disc pick up error Resolve the problem as follows.</p> <ol style="list-style-type: none"> 1. Open the disc cover and fan the discs inside the input stacker. 2. Close the disc cover and publish disc again. <p>If the same error occurs frequently, contact your dealer.</p> <hr/> <p>Multiple feed error Resolve the problem as follows.</p> <ol style="list-style-type: none"> 1. Open the disc cover. 2. Remove the discs from both the drive tray and the printer tray. 3. Fan the discs inside the input stacker to avoid disc sticking. 4. Insert other discs into the input stacker. 5. Close the disc cover and publish disc again. <p>If the same error occurs frequently, contact your dealer.</p>

Lights								Conditions/Remedies
Power	Busy	Error	Ink	Stacker				
				1	2	3	4	
●	○	●	○	○	○	○	○	<p>Disc transfer error Turn off the product and remove the disc. If the same error occurs frequently, contact your dealer.</p> <p>Arm failed to release disc Turn off the product and remove disc. Do not remove disc from the arm by hand if arm is picking up the disc. This may damage the arm. To remove the disc from the arm, turn on the product again and let initializing process remove the disc. If the same error occurs frequently, contact your dealer.</p> <p>Internal error Turn off the product and check inside for any objects, then turn on the product again. If the same error occurs frequently, contact your dealer. Do not remove disc from the arm by hand if arm is picking up the disc. This may damage the arm. To remove the disc from the arm, turn on the product again and let initializing process remove the disc.</p>

Error associated with stacker

Lights								Conditions/Remedies
Power	Busy	Error	Ink	Stacker				
				1	2	3	4	
●	○	●	○	○	○	●	○	<p>Stacker 3 is inserted for Standard Mode or External Output Mode Remove Stacker 3.</p>
●	○	●	○	●	○	○	○	<p>Stacker 1 is not correctly inserted Make sure that Stacker 1 is correctly inserted.</p>
●	○	●	○	○	●	○	○	<p>Stacker 2 is not correctly inserted Make sure that Stacker 2 is correctly inserted.</p>

Lights								Conditions/Remedies
Power	Busy	Error	Ink	Stacker				
				1	2	3	4	
●	○	●	○	○	○	●	○	Stacker 3 is not correctly inserted for Batch Mode Make sure that Stacker 3 is correctly inserted.
●	○	○	○	●	○	○	○	Stacker 1 is empty Load discs into Stacker 1. Note: <i>The stacker lamp flashes when the source stacker is out of discs; however, the timing of the light flashing may not match with the timing of the stacker becoming empty.</i>
●	○	○	○	○	●	○	○	Stacker 2 is empty Load discs into Stacker 2. Note: <i>The stacker lamp flashes when the source stacker is out of discs; however, the timing of the light flashing may not match with the timing of the stacker becoming empty.</i>
●	○	●	○	●	○	○	○	Stacker 1 is overloaded Remove discs so that discs are below the red line.
●	○	●	○	○	●	○	○	Stacker 2 is overloaded Remove discs so that discs are below the red line.
●	○	●	○	○	○	●	○	Stacker 3 is overloaded Remove all the discs from Stacker 3.
●	○	○	○	○	●	○	○	Stacker 2 is full Remove published discs from Stacker 2.
●	○	○	○	○	○	●	○	Stacker 3 is full Remove published discs from Stacker 3.
●	○	●	○	○	○	○	●	Stacker 4 is full Remove published discs from Stacker 4.
●	○	○	○	○	○	○	●	Stacker 4 is open Close Stacker 4.

Error associated with ink

Lights								Conditions/Remedies
Power	Busy	Error	Ink	Stacker				
				1	2	3	4	
●	○	○	○	○	○	○	○	<p>Ink low</p> <p>Obtain a replacement ink cartridge. To determine which cartridge is low, check the ink cartridge status. See "Checking the Ink Cartridge Status" on page 52.</p>
●	○	○	●	○	○	○	○	<p>The ink has reached its replacement time or it is not installed correctly.</p> <p>Replace the ink cartridge or reinstall it.</p> <p>If the ink cartridge is not recognized even if it is installed correctly, dirt may be attached to the green circuit board. Wipe it with soft cloth and install it again.</p> <p>The product will stop operation before ink is completely empty in order to maintain print head quality. Therefore, some ink will be left in the ink cartridge.</p> <p>It is recommended to use a genuine ink cartridge.</p>
●	○	○	●	○	○	○	○	<p>Ink cartridge not fully inserted</p> <p>All ink lights are on.</p> <p>Check ink cartridges and make sure they are all fully inserted.</p>

Error associated with product

Lights								Conditions/Remedies
Power	Busy	Error	Ink	Stacker				
				1	2	3	4	
●	●	●	●	●	●	●	●	<p>Ink pad full</p> <p>Please have an authorized Epson service center service the ink pad right away. The pad is full and the unit can no longer function. Do not attempt to service the unit yourself.</p> <p>Note: If ink pad is nearly full, an "Ink Pad Nearly Full" message will be displayed by the software. There will be no lights indicating it. Please have an authorized Epson service center service the ink pad right away. The pad is nearly full and the unit will stop functioning when the pad becomes full. Do not attempt to service the unit yourself.</p>
								<p>Product maintenance error</p> <p>A product maintenance error has occurred. Turn off the product and contact your dealer.</p>
○	○	○	○	○	○	○	○	<p>Internal error</p> <p>Turn off the product and check inside for any objects. If the same error occurs frequently, contact your dealer.</p> <ul style="list-style-type: none"> <input type="checkbox"/> Leaving the product off after the error may result in clogging of print head. Make sure to turn on the product immediately after turned off. <input type="checkbox"/> If resuming label printing after the error, run Nozzle Check and confirm the condition of the print head. <input type="checkbox"/> If the publishing does not start, check if a print job remains in the print spooler and delete all print jobs.

Error associated with drive

Lights								Conditions/Remedies
Power	Busy	Error	Ink	Stacker				
				1	2	3	4	
○	○	○	○	○	○	○	○	<p>Drive tray open/close error</p> <p>Turn off the product, unplug the power cord, and check inside for any objects. Then, publish the disc again. If the same error occurs frequently, contact your dealer.</p>
								<p>Internal drive error</p> <p>Turn off the product, unplug the power cable, and then check the inside of the drive. If the same error occurs frequently, contact your dealer.</p>
								<p>Writing error</p> <p>The error could not be cleared even if it repeated itself for the retry number of times. Disc may have a problem. Replace the disc and resume job. If there is a problem with the drive, change the drive with EPSON Total Disc Setup and resume the job. If the same error occurs frequently, contact your dealer.</p>
●	○	●	○	○	○	○	○	<p>Invalid disc error</p> <p>An invalid disc error has occurred, such as the disc may not be blank or the disc does not have enough space. Or, the disc loaded in the stacker differs from the disc type you set in the EPSON Total Disc Setup Properties dialog box.</p> <p>The error could not be cleared even if it repeated itself for the retry number of times. Check that the disc is blank and not damaged. Then, in the EPSON Total Disc Setup Properties dialog box, select the disc type that is the same as the discs loaded in the stacker. If you use the proper disc but the same error occurs frequently, contact your dealer.</p>

Other error

Lights								Conditions/Remedies
Power	Busy	Error	Ink	Stacker				
				1	2	3	4	
●	○	●	○	○	○	○	○	Improper status error Turn the product off and on. If the same error occurs frequently, contact your dealer.

EPSON Total Disc Monitor

If a problem occurs while publishing, an error message will appear in the EPSON Total Disc Monitor window.

If an error message appears indicating the parts inside the product are near the end of their service life or the waste ink pad in the product is saturated, contact your dealer to replace it.

Checking Product Status

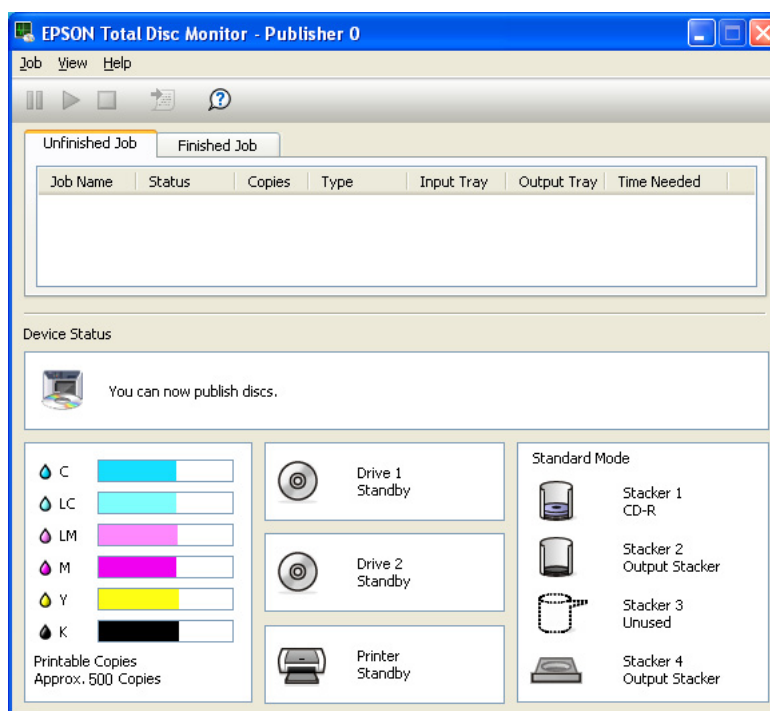
Using EPSON Total Disc Monitor

EPSON Total Disc Monitor displays detailed information on the product status.

There are three ways to access EPSON Total Disc Monitor:

- When you send a job to the product, EPSON Total Disc Monitor appears.
- In the EPSON Total Disc Maker window, click the **Publish** button. From the Tool menu, select **Start Total Disc Monitor**.
- For Windows XP and 2000:**
Click **Start**, point to **All Programs** (Windows XP) or **Programs** (Windows 2000), point to **EPSON Total Disc Maker**, and then click **EPSON Total Disc Monitor**.

When you access EPSON Total Disc Monitor, the following window appears:



EPSON Total Disc Monitor provides the following information:

Job list:

You can check a list of jobs (up to 1000 for Unfinished Job and 50 for Finished Job) and its information, and also you can cancel, pause, and restart unfinished jobs.

Device Status:

This provides device status information. It also displays error messages as well as helpful tips for better publishing.

Ink Cartridge Status:

This provides a graphic display of the ink cartridge status.

Note:

Printable Copies is the approximate figure of printable number of labels based on using the previously printed label. The figure maybe different from the actual figure.

Drive, Printer, Stacker Status:

This provides a graphic display of the drives, printer, and stacker status. It also shows where an error occurs.

Disc or the CD/DVD Tray Does Not Feed Correctly

Disc does not feed

Remove the stack of discs and make sure of the following:

- The disc is not damaged.
- The disc is not too old. See the instructions that came with the disc for more information.
- The stack of discs fits under the red line on the stacker.
- Discs may have stuck together because of incorrect transportation of the discs; therefore, discs should be separated thoroughly before loading into the stacker. Also, storing discs in the stacker for an extended period of time may cause discs to stick to each other again. If discs are stored in the stacker for an extended period of time, separate the discs again before operating the product.
- A disc is not jammed inside the product. If it is, remove the jammed disc.
 - ➔ See “Disc jams” on page 79.
- The ink cartridges have not reached replacement time. If a cartridge has reached its replacement time, replace it.
 - ➔ See “Replacing an Ink Cartridge” on page 54.

If disc does not feed from the input stacker.

1. Open the disc cover.
2. Remove blank discs from the stacker.
3. Fan a stack of discs to prevent them from sticking together.
4. Insert discs back in the stacker.
5. Close the disc cover.
6. Publish disc again.

If disc does not feed from the drive tray or the printer tray.

1. Turn the power off.
2. Turn the power back on.
3. Publish disc again.

If arm has picked up disc.

Do not remove the disc by hand as arm may be damaged. To remove the disc, turn off the power and turn on the power again, and let the initializing process remove the disc.

If the same error continues to occur, contact your dealer.

Multiple discs feed

- Make sure the disc stack fits under the red line on the stacker.
- Make sure none of the discs are damaged.
- Remove the stack of discs and make sure that the discs are not too thin.
➔ See “Discs” on page 93.
- Remove discs from the stacker and fan them before loading them back.
- If only one disc is found when multiple feed error is displayed, disc thickness or warpage maybe out of standard. Follow the steps below to resolve multiple disc feed error and replace discs. If the same error continues to occur, contact your dealer.
 1. Open disc cover.
 2. Remove the disc from the tray.
 3. Remove discs from the input stacker.
 4. Insert other discs into the input stacker.
 5. Close the disc cover and the job will resume.

Disc jams

If a disc is left in the drive or printer tray, it will be ejected when you turn off/on the product. If you cannot remove the disc by restarting the product, follow the procedures below:

- If a disc is stuck in the printer tray, turn off the product, unplug the power cable from the wall outlet, and open the disc cover located on the rear of the product. Then remove all the discs inside. Close the disc cover. After removing the discs, clean the printer tray.
- If a disc is stuck in the drive tray, turn off the product, unplug the power cable from the wall outlet, and then insert a pin into the eject hole to open the tray forcibly. Then, remove the disc from the tray and close it.

Note:

Insert a pin into the hole and push to eject the tray when the tray doesn't unload by pressing the Eject button. In normal operation, the eject button should be used to unload the tray. Make sure the power of the product is turned off and wait more than one minute until disc rotation is stopped before accessing with the eject hole.

Note:

- If you cannot easily remove a foreign object, do not use force and do not disassemble the product. Call your dealer for assistance.*
- If arm is stopped while picking up disc, do not try removing disc by hand. This may result in damaging the arm. If such an error occurs, turn off/on the power and try resolving the problem by initializing the product. If the error continues to occur, contact customer support.*

If your discs jam frequently, make sure of the following:

- The discs are smooth, not damaged.
- You are using a high-quality discs.
- The printable side of the discs are face up in the stacker.
- The stack of discs was fanned before loading.
- The stack of discs is not loaded above the red line on the stacker.
- The number of discs in the stacker does not exceed the limit specified for that disc.
➔ See “Mechanical” on page 100.
- The product is on a flat, stable surface that extends beyond the base in all directions.
The product will not operate properly if it is tilted.

Writing Problem






Cannot write to the disc

Avoid using the product where dust or smoke is abundant. It may result in write error. If a disc write error occurs frequently, check the following:

- The disc is not damaged.
- The disc is high-quality.
- The product is used within acceptable environmental conditions.
- The product is not subject to vibration or shock.
- The fan filter is not clogged with dust.
- The printer tray is not dirty.

Print Quality Problems

If you are having a print quality problem, then compare it with the illustrations below. Click the caption under the illustration that best resembles your printout.

<p>enthalten alle i Aufdruck. W J 5008 "Regel</p> <p>Good sample</p>	 <p>Good sample</p>
<p>enthalten alle i Aufdruck. W J 5008 "Regel</p> <p>"Horizontal banding" on page 81</p>	<p>enthalten alle i Aufdruck. W J 5008 "Regel</p> <p>"Vertical misalignment" on page 82</p>
 <p>"Horizontal banding" on page 81</p>	 <p>"Vertical misalignment" on page 82</p>
 <p>"Incorrect or missing colors" on page 82</p>	 <p>"Blurry or smeared printout" on page 83</p>

Horizontal banding

- Make sure the printable side of the disc is face up in the Stacker.
- Run the Head Cleaning utility to clear any clogged ink nozzles.
 - ➔ See "Cleaning the Print Head" on page 60.
- Use ink cartridges within six months after opening the packages.

- ❑ Use genuine Epson ink cartridges.
- ❑ Check the Δ ink light. If the light is on, replace the appropriate ink cartridge.
➔ See “Replacing an Ink Cartridge” on page 54.
- ❑ Make sure the label type selected in the printer driver is appropriate for the type of disc loaded in the product.
➔ See “Publishing Discs” on page 18.

Vertical misalignment

- ❑ Run the Print Head Alignment utility.
➔ See “Aligning the Print Head” on page 62.
- ❑ Make sure the label type selected in the printer driver is appropriate for the type of disc loaded in the product.
➔ See “Publishing Discs” on page 18.

Banding

- ❑ Make sure the printable side of the disc is face up in the Stacker.
- ❑ Run the Head Cleaning utility to clear any clogged ink nozzles.
➔ See “Cleaning the Print Head” on page 60.
- ❑ Make sure the label type selected in the printer driver is appropriate for the type of disc loaded in the product.
➔ See “Publishing Discs” on page 18.
- ❑ Due to the variation in the quality of discs, print results using the same type of discs from the same data may not be the same.

Incorrect or missing colors

- ❑ Adjust the color settings in your application or in your printer driver settings.
Check the Main window.
See the printer driver online Help for details.
- ❑ Run the Head Cleaning utility.
➔ See “Cleaning the Print Head” on page 60.
- ❑ Check the Δ ink light. If the light is on, replace the appropriate ink cartridge.
➔ See “Replacing an Ink Cartridge” on page 54.

- ❑ If you have just replaced an ink cartridge, make sure the date on the box has not expired. If you have not used the product for a long time, replace the ink cartridges.
 - ➔ See “Replacing an Ink Cartridge” on page 54.

Blurry or smeared printout

- ❑ Use genuine Epson ink cartridges.
- ❑ Make sure the product is on a flat, stable surface that extends beyond the base in all directions. The product will not operate properly if it is tilted.
- ❑ Make sure your disc is not damaged, dirty, or too old.
- ❑ Make sure your disc is dry and the printable side is facing up.
- ❑ Make sure the label type selected in the printer driver is appropriate for the type of disc loaded in the product.
 - ➔ See “Publishing Discs” on page 18.
- ❑ Do not touch or allow anything to come into contact with the printed side of disc with a shiny finish. After printing on a glossy disc, allow the ink to set for a few hours before handling it.
- ❑ Run the Head Cleaning utility.
 - ➔ See “Cleaning the Print Head” on page 60.

Miscellaneous Printout Problems

Incorrect or garbled characters

- ❑ Clear any stalled print jobs from the Windows Spooler (Windows XP and 2000).
- ❑ Turn off the product and computer. Make sure the product’s interface cable is securely plugged in.
- ❑ Uninstall the printer driver, then reinstall it.
 - ➔ See “Uninstalling Software” on page 17.

Incorrect margins

- Check the Inner/Outer Diameter settings in your application. Make sure that the margins are within the printable area of the disc.
➔ See “Printable area” on page 97.
- Make sure the printer driver settings are appropriate for the label size you are using. Check the Main window.
See the printer driver online Help for details.
- Uninstall the printer driver, then reinstall it.
➔ See “Uninstalling Software” on page 17.
- The printing location may shift depending on the disc used. Perform Print Head Alignment or Correcting the Printing Position.
➔ See “Correcting the Printing Position” on page 63.
- The ink receptor layer may shift from the center of the disc making the print location to appear shifted from the ink receptor layer. Check if the ink receptor layer is shifted from the center of the disc or from the outer edge.

Printout has a slight slant

- Perform Nozzle Check, Print Head Cleaning, and Print Head Alignment utilities.

Printed side is smeared or scuffed

- Select the appropriate disc size setting in the printer driver.
- Uninstall the printer driver, then reinstall it.
➔ See “Uninstalling Software” on page 17.

Printing is too slow

- Make sure the label type selected in the printer driver is appropriate for the type of disc loaded in the product.
➔ See “Publishing Discs” on page 18.
- Close any unnecessary applications.
- Make sure that printing mode is set to bi-directional.


- ❑ If you print continuously for an extended period, the disc may temporarily stop feeding or the printing may pause for a while. This is to slow down the printing speed and prevent the product mechanism from overheating and being damaged. If this happens, you can continue to print, but we recommend stopping and leaving the product for about thirty minutes with the power on. (The product does not recover with the power off.) After you restart, the product will print at normal speed.
- ❑ Uninstall the printer driver, then reinstall it.
 - ➔ See “Uninstalling Software” on page 17.

Ink adheres to the recording surface

- ❑ Depending on the type of disc, ink may adhere to the recording surfaces if they are stacked right after printing. Make sure of the type of disc before using.
- ❑ Keep the printing surface of the disc away from other discs until ink of the printed disc is completely dry, otherwise marks or smudges may be left at contact area.

The Product Does Not Function

All lights are off

- ❑ Press the  power button to make sure the product is on.
- ❑ Turn off the product, and make sure that the power cord is securely plugged in.
- ❑ Make sure that your outlet works and is not controlled by a wall switch or timer.

Lights came on and then went out

The product's voltage may not match the outlet rating. Turn off the product and unplug it immediately. Then check the label on the back of the product.



Caution:

If the voltage does not match, DO NOT PLUG YOUR PRODUCT BACK IN. Contact your dealer.

Only the power light is on

- ❑ If you press the ⏻ power button lightly, the product may not turn on, although the ⓪ Ⓛ power light flashes for a while. Press the button firmly.
- ❑ Turn off the product and computer. Make sure the product's interface cable is securely plugged in.
- ❑ If you are trying to print a large image, your computer may not have enough memory. Try reducing the resolution of your image or printing the image at a smaller size. You may need to install more memory in your computer.
- ❑ Uninstall the printer driver, then reinstall it.
 - ➔ See "Uninstalling Software" on page 17.

The ink light is flashing or is on after you replace the cartridge

Make sure the ink cartridge is correctly installed.

Software cannot be installed

- ❑ Is the USB cable unplugged? Make sure that the USB cable is firmly connected.
- ❑ Does the USB cable match the computer and the product requirements? The USB cable used to connect the computer and the product should be USB 2.0 compatible.
- ❑ Has the HDD sufficient free space? The software cannot be installed if the HDD does not have free space of more than 10GB.
- ❑ Did you log on as a user with administrator privileges (belonging to the administrator group) for Windows? When installing the software, log on as a user with administrator privileges (belonging to the administrator group).
- ❑ Are you using a USB hub? The USB cable should be connected directly between the PC and the product.
- ❑ The output device may not be recognized in the environment with Windows Media Player 7 installed. In this case, uninstall the EPSON Total Disc Maker and restart the computer, then reinstall the EPSON Total Disc Maker.
- ❑ If the language setting of the system and the user is different, installation may not be correctly performed. Make sure to set the language setting of the system and the user to the same before installation.

When installing the software, make sure to turn the product off; then start installation.

Ink Pad Nearly Full message is displayed by the software

Ink pad is nearly full. Please have an authorized Epson service center replace the ink pad right away. The pad is nearly full, and the unit will stop functioning when the pad becomes full. Do not attempt to service the unit yourself.

Disc cannot be published

If the user is logged on as a guest and could not access the service, terminal service must be enabled before publishing. Contact administrator for terminal service settings.

Where To Get Help

Contacting Customer Support

Before Contacting Epson

If your Epson product is not operating properly and you cannot solve the problem using the troubleshooting information in your product documentation, contact customer support services for assistance. If customer support for your area is not listed below, contact the dealer where you purchased your product.

Customer support will be able to help you much more quickly if you give them the following information:

- Product serial number
(The serial number label is usually on the back of the product.)
- Product model
- Product software version
(Click **About**, **Version Info**, or similar button in the product software.)
- Brand and model of your computer
- Your computer operating system name and version
- Names and versions of the software applications you normally use with your product

Help for Users in the United States and Canada

Contacts for information, support, and services are:

Discproducer Technical Support: 562-276-1360

Location: Epson America Inc.

Web site URL: <http://www.discproducer.epson.com>

This site will provide the end user with access to the latest drivers and FAQs.

Help for Users in the Europe (EMEA)

Contacts for information, support, and services are:

Web site URL: <http://www.discproducer.epson-europe.com>

If you need the latest drivers, FAQs, manuals, or other downloadable, access the site at:

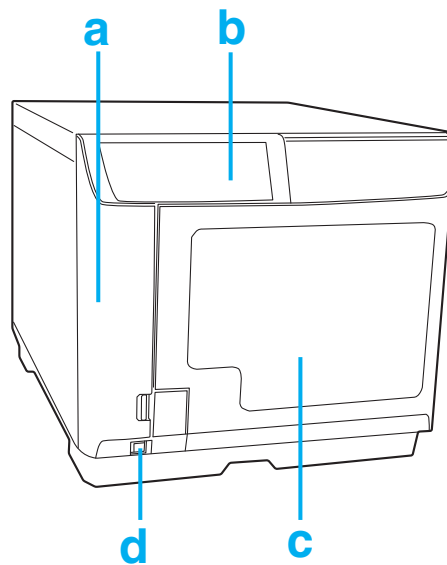
<http://download.epson-discproducer.com>

Or contact your local distributor or Epson sales company.

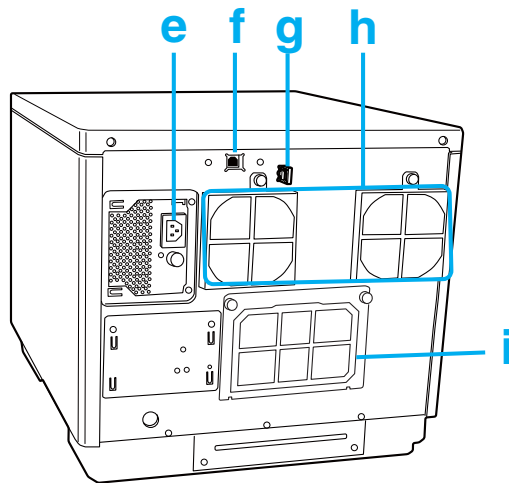
Product Information

Product Parts and Control Panel Functions

Product Parts



- a. Ink cartridge cover: Secures the ink cartridges. Open only when installing or replacing ink cartridges.
- b. Control Panel: Use the button and monitor the lights to control your product. See the next section for details.
- c. Disc cover: Open when loading or taking out the discs.
- d. Power button: Turns the product on or off.

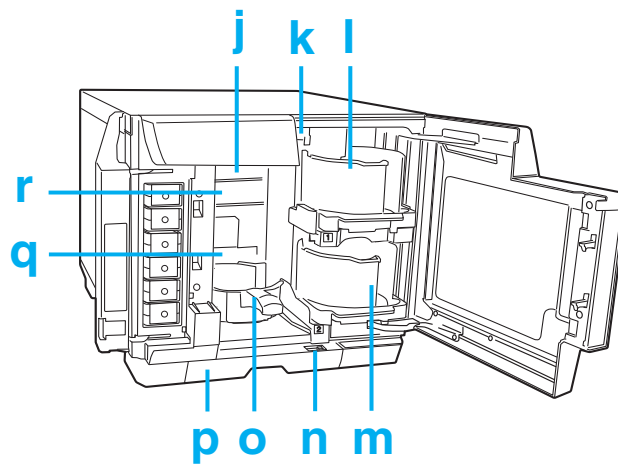


- e. AC inlet: Plug in the power cord.
- f. USB connector: Connects a USB cable from your computer to the product.
- g. Interface cable locking saddle: Use this for directing and gathering the cable.
- h. Air Vent: Leave at least 10 cm (3.94") between the back of the product and the wall for ventilation.
- i. Rear printer cover: Open this cover only when a disc is stuck in the printer tray.



Caution:

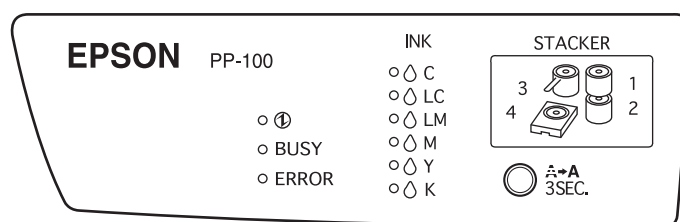
Before opening the rear printer cover, be sure to unplug the power cable from the wall outlet. Be sure to attach this cover while in use.



- j. Drive 1: Writes data on the recording surface of discs.

- k. Arm: Transports discs.
- l. Stacker 1: Use Stacker 1 as a disc input stacker. Holds up to 50 discs.
- m. Stacker 2: Use Stacker 2 as a disc input or output stacker. Holds up to about 50 discs.
- n. Lock lever: Use this lever to lock or unlock Stacker 4. Lock the lever when you use Stacker 3 in Batch mode.
- o. Stacker 3: Use Stacker 3 as a disc output stacker. Holds up to about 50 discs.
- p. Stacker 4: Use Stacker 4 as a disc output stacker. Holds up to about 5 discs.
- q. Printer: Prints on label surface of discs.
- r. Drive 2: Writes data on the recording surface of discs.

Control Panel


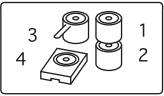


Buttons

Button	Function
	Press and hold for 3 seconds to clean the print head.

Lights

Light	Description
	On when the product is on. Flashes when the product is initializing, after replacing an ink cartridge, charging ink, or cleaning the print head.
BUSY	Flashes when jobs are processed.

<p>ERROR</p>	<p>On when cover is open, or when errors on disc transfer, stacker, drive, or printer occur. Flashes when trouble occurs on product.</p>
<p> INK</p>	<p>On when an ink cartridge has reached its replacement time or is not correctly inserted. Flashes when ink is low.</p>
<p> STACKER</p>	<p>On when the stacker is overloaded with discs, or when Stacker 3 is not removed for the Standard and External Output mode. Flashes when the stacker is not installed correctly or the stacker is out of discs. When the Stacker 4 light flashes rapidly, do not pull out Stacker 4.</p>

For details on error status, see the following instructions.

➔ See page 68.

Ink and Disc

Ink cartridges

You can use the following ink cartridges with this product:

Ink cartridge	Part numbers
Cyan	C13S020447
Light Cyan	C13S020448
Light Magenta	C13S020449
Magenta	C13S020450
Yellow	C13S020451
Black	C13S020452

To purchase a PP-100 Series exclusive ink cartridge, check with the dealer where you purchased your PP-100 or access either of the following urls:

<http://www.discproducer.epson-europe.com> (Europe)

<http://www.discproducer.epson.com> (United States and Canada)

Discs

Epson offers the specified CD-R and DVD-R discs for all your printing needs.

System Requirements

For using the product

Windows requirements

To use this product, you must have any of the following Windows operating systems installed.

Operating system	Windows XP Service Pack 2 or higher Windows 2000 Service Pack 4 or higher
CPU	Pentium 4 1.4 GHz or higher processor
Memory	512 MB RAM or more
Hard disk space	10 GB or more free hard disk space
HDD rotational speed	7200 rpm or more
Interface	USB 2.0 <input type="checkbox"/> Compatible with USB 2.0 standard <input type="checkbox"/> Ensure Hi-Speed USB performance
Display	XGA or higher resolution, 65536 colors or more
Other	Making music CD: Require sound device with appropriate driver installed.

Note:

- If your file system is FAT, you may not write to a DVD.
- ATI South Bridge chip set IPX460 or earlier is incompatible with this product.
- Refer to the URLs listed on pages 88 and 89 for chip sets that are not supported.
- The product may not function properly if third party writing software is installed, anti-virus software is installed, and another USB device is connected.
- The source drive should be MMC4 or higher and capable of reading sub-channels.

Technical Specifications

Disc

**Caution:**

Printable disc is 12 cm (4.72") CD/DVD disc. 80 mm (3.15") disc is not supported.

Note:

- Since the quality of any particular brand or type of disc may be changed by the manufacturer at any time, Epson cannot attest to the quality of any brand or type of disc. Always test samples of disc stock before purchasing large quantities or printing large jobs.
- Poor quality disc may reduce print quality and cause disc jams or other problems. If you encounter problems, switch to a higher grade of disc.
- The specified disc is for ink jet printers. Thermal transfer discs are not supported.
- The specified disc has a moisture adhesive ink receptor layer on the label surface. If stored stacked, especially under high humidity and high temperature conditions, discs may adhere to each other. If an automatic duplication machine is used, please check the disc before using.
- Please treat the recording surface (blue green colored side) and printing surface carefully so they do not have fingerprints, dirt, dust, water, or scratches. Dust and dirt on the recording surface should be wiped gently with soft dry cloth, commercially available CD cleaner, or ethyl alcohol. Do not use benzine, thinner, or antistatic material.

CD/DVD:

Type	CD-R, DVD-R, DVD+R, DVD-R DL, DVD+R DL
Label side	Printable *Glossy labels other than the specified disc are not supported.
Specified disc	CD-R, DVD-R

Notes for handling the disc

Notes when using the disc

- Do not touch recording surface when holding it.
- Handle with care so that label surface and recording surface do not have fingerprints, dirt, dust, water drops, or scratches.
- Do not drop or shock discs.

- Do not apply excess force, like pinching with a clip, or bend.
- Do not attach an adhesive sticker to the disc. This may result in the disc being unable to record or play.
- Do not use in a place where lots of dirt and dust are present.
- If write and print separately, it is recommended to write before print.
- Leaving disc stacked may result in discs to stick to each other.
- Touching or splashing water drops on printing surface right after printing may result in blurring.
- Let the discs dry naturally after printing. Touching the surface with your hand or splashing the surface with water right after printing may result in blurriness and stickiness.
- Printing is possible only on printing surface. When printing, use soft tipped writing equipment like a felt pen and do not use a ball point pen. Also, do not erase once printed.
- Do not use with an auto loading mechanism, a drive with a holding mechanism larger than 33 mm, or an automotive drive. Depending on the condition used, the printing surfaces may stick.
- A published CD/DVD may not be readable on another type of drive or player due to compatibility.
- Playing blank disc on CD player or CD-ROM drive may cause mechanical error and result in scratching the disc.
- The recording surface side has a concentric ring projection called the stack ring. Depending on the disc, projection of the stack ring is small and use of such disc may cause the disc to stick before or after printing. It is recommended to check the disc before use.
- The specified discs have a moisture-adhesive ink receptor layer on the label surface. If stored stacked, especially under high humidity and high temperature conditions, disc may adhere to each other. If an automatic duplication machine is used, please check the disc before using.

Notes when storing the disc

- Do not store under direct sunlight, near heating equipment, or high humidity and temperature.

- ❑ Do not place where large temperature variance take place as condensation may occur.
- ❑ Do not place object on top of it.
- ❑ When storing, keep the disc in its disc case and avoid letting film or cards touch the printing surface. These may scratch the printing surface.
- ❑ Do not store discs in soft cases or bags which may touch the printing surface directly. This may cause discs to stick, color shading, or discoloration.
- ❑ Avoid storing with part of the printing surface covered, as this may cause smearing or dis-coloration.
- ❑ Making a backup is recommended if the data is important. It is recommended to make backups periodically if storing for long period of time.
- ❑ Avoid storing under high temperatures and high humidity, which may result in blurriness and stickiness of the printing surface.

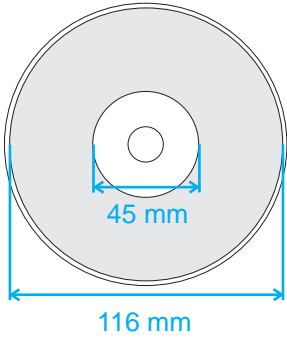
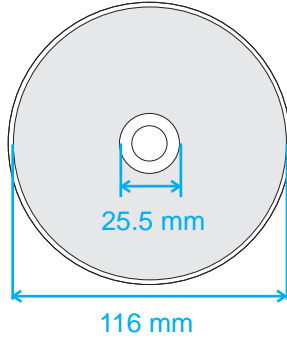
Printable area

Printable area is the area for the label printing.

The printable area can be set from Set Inner/Outer Diameter screen of the EPSON Total Disc Maker.

In the Set Inner/Outer Diameter screen, you can select Standard, Wide, or set manually. Following diagram shows the printable area for Standard and Wide. Printing will be done in the gray area.

CD/DVD:

12-cm (4.72") CD/DVD (Standard)		12-cm (4.72") CD/DVD (Wide)	
			
Inner diameter	Outer diameter	Inner diameter	Outer diameter
45 mm (1.77")	116 mm (4.57")	25.5 mm (1.00")	116 mm (4.57")

**Caution:**

- ❑ *Make sure to set the inner diameter and the outer diameter within the areas shown above. Printing on sections outside the printable area may damage your CD/DVD drive.*
- ❑ *The EPSON Total Disc Maker can set between inner diameter of 18 mm to outer diameter of 119.4 mm (0.71 to 4.70"). However, printing outside printable area (45 to 116 mm) may result in sticking, staining of disc tray, peeling of print, and blurring of print. It is recommended to check the disc type before using.*
- ❑ *When printing outside printable area (ink absorbing layer) of the disc is being used, ink printed outside the printable area does not fix. Check the label of the printable area of the disc being used before setting.*
- ❑ *Precautions for setting the printable area*
 - Make sure that the printable area set does not exceed the printable area of the actual disc being used.*
 - Check whether coloration of print made on the rib (stack ring) is not uniform.*
 - Printing on the rib (stack ring) may cause ink sticking, disc sticking, and ink erasure after printing.*
- ❑ *Measures to be taken when printing outside printable area*
 - When printing inside the inner diameter results in ink sticking, disc sticking, and ink erasure, the following action can be taken to avoid that.*
 - Set Drying Time on the printer driver's printer settings screen and print. Although throughput may be reduced, problems will be avoided or reduced since the disc will be ejected after a set time.*
 - Enable Publish after Mask Rib Area. If you print from another application, set from the user-defined label setting in the printer driver. If you print from the Total Disc Maker, set from Set Inner/Outer Diameter setting.*

Note:

When you print on CDs/DVDs with a commercially available software package that supports CD/DVD printing, you have to make the following settings.

Size	124 x 124 mm (4.88 x 4.88")
Type	CD/DVD Label, CD/DVD Premium Label, or EPSON Specified CD/DVD Label
Margins on all sides	2 mm (0.08")

Ink cartridges

Color	Black, Yellow, Magenta, Light Magenta, Cyan, Light Cyan
Cartridge life	Use within 6 months of opening the package.
Temperature	Storage: -20 to 40 °C (-4 to 104 °F) 1 month at 40 °C (104 °F)

**Caution:**

- ❑ *Epson recommends the use of genuine Epson ink cartridges. Other products not manufactured by Epson may cause damage that is not covered by Epson's warranties, and under certain circumstances, may cause erratic behavior.*
- ❑ *Use the ink cartridge before the expiration date printed on its package.*
- ❑ *Do not refill the ink cartridge. Other products not manufactured by Epson may cause damage that is not covered by Epson's warranties, and under certain circumstances, may cause erratic behavior.*

Note:

- ❑ *The ink cartridges packaged with your product are partly used during initial setup. In order to produce high-quality printouts, the print head in your product will be fully charged with ink. This one-off process consumes a quantity of ink, and therefore these cartridges print fewer pages compared to subsequent ink cartridges.*
- ❑ *Do not store ink cartridges under high or freezing temperatures, or under direct sunlight.*
- ❑ *To ensure that you receive premium print quality and to help protect your print head, a variable ink safety reserve remains in the cartridge when your product indicates to replace the cartridge. The yields quoted for you do not include this reserve.*
- ❑ *Cartridge yields vary considerably based on images printed, print settings, disc type, frequency of use and temperature. For print quality, a variable amount of ink remains in the cartridge after the "replace cartridge" indicator comes on. This product ships with full cartridges and part of the ink from the first cartridges is used for priming its printer. See www.discproducer.epson.com for more information about cartridges.*

Job processing

Job processing speed	Write and print	CD	30 discs/hr When using EPSON specified CD-R, drive speed of 40x, writing 600 MB data, and Speed/Bidirectional printing.
		DVD	15 discs/hr When using EPSON specified DVD-R, drive speed of 12x, writing 3.8 GB data, and Speed/Bidirectional printing.
	Print only	Speed	60 discs/hr Bidirectional printing
		Quality	40 discs/hr Bidirectional printing
Printing direction		bidirectional, unidirectional	

Note:

Depending on the disc or the computer used, writing speed may become slower than the set speed.

Printing

Printing method		On demand inkjet
Head	Number of nozzles	180 per color
Resolution		Speed: 1,440 x 720 dpi Quality: 1,440 x 1,440 dpi

dpi: dots per inch

Write speed

CD-R	40x / 32x / 24x / 16x / 10x / 4x
DVD-R	12x / 8x / 6x / 4x / 2x / 1x
DVD+R	12x / 8x / 6x / 4x / 2.4x
DVD-R DL	8x / 6x / 4x / 2x
DVD+R DL	8x / 6x / 4x / 2.4x

Mechanical

Drive	Two drives, tray loading type
Stacker capacity	Stacker 1 to 3: Max. about 50 discs Stacker 4: Max. about 5 discs
Dimensions	Width: 377 mm (14.8 inches) Depth: 465 mm (18.3 inches) Height: 348 mm (13.7 inches)
Weight	Approx. 24 kg (53 lb) with accessories

Electrical

Input voltage range		AC 100 to 240 V
Rated frequency range		50 to 60 Hz
Rated current		1.0 A
Power consumption	Printing	41 W
	Standby mode	24 W

Note:

Check the label on the back of the product for its voltage.

Environmental

Temperature	Operation: 10 to 35 °C (50 to 95 °F) Storage: -20 to 40 °C (-4 to 104 °F) 1 month at 40 °C (104 °F)
Humidity	Operation:* ¹ 20 to 80% RH Storage:* ¹ 5 to 85% RH

*1 Without condensation

Standards and approvals

Safety	UL60950-1 CAN/CSA-C22.2 No.60950-1
EMC	FCC Part 15 Subpart B Class B CAN/CSA-CEI/IEC CISPR 22 Class B
Low voltage directive 2006/95/EC	EN60950-1
EMC directive 2004/108/EC	EN55022 Class B EN61000-3-2 EN61000-3-3 EN55024

Interface

High-Speed USB

Lifetime

Epson estimates lifetime for components of this product to be as follows:

Expected Lifetime:

Ink pad life: About 10,000 to 40,000 discs printed

Burner life: About 8,000 to 30,000 discs burned

The product's ink pad is expected to become saturated and need replacing after printing about 10,000 to 40,000 discs. The burner life estimate is the combined life for the two burners, with the low estimate based on burning DVDs only, and the high estimate based on burning CDs only. Expected lifetimes are only estimates. Actual results will vary based on such factors as images printed, print settings, disc type, frequency of use, temperature, and mix of CDs vs. DVDs burned.

Index

A

Aligning print head, 62

B

Banding, 81, 82

Blurry prints, 83

C

Cable

connector, 91

Canceling printing, 51

CD/DVD

printable area, 97

printing, 23, 24, 31, 41

publishing, 27, 38, 46

Cleaning

print head, 60

product, 64

Color problems, 82

Contacting Epson, 88

Control panel, 90, 92

Correcting the printing position, 63

D

Disc cover, 90

Driver

accessing for Windows, 16

uninstalling, 17

DVD

printable area, 97

printing, 23, 24, 31, 41

E

EPSON

Total Disc Maker, 14, 15

EPSON Total Disc Maker, 15

description, 14

Error indicators, 68

H

Head cleaning

Windows, 61

Horizontal banding, 81

I

Incorrect characters, 83

Ink cartridge cover, 90

Ink cartridges

part numbers, 93

replacing when expended, 54

Interface cables, 101

L

Lights, 92

error indicators, 68

flashing, 86

M

Margins

problems, 84

Misalignment, 82

N

Nozzle check, 59

Windows, 59

P

Paper

feeding problems, 78

jams, 79

printable area, 97

specifications, 95

Printer settings

accessing for Windows, 16

Print head

aligning, 62

checking, 59

cleaning, 60

correcting, 63
Printing
canceling, 51
Print quality, improving, 80
Print speed, increasing, 84
Problems
banding, 81, 82
blurry prints, 83
diagnosing, 68
incorrect characters, 83
incorrect colors, 82
margins, 84
paper feeding, 78
paper jams, 79
printer does not print, 85
print speed, 84
smeared prints, 83, 84
Product
buttons, 92
checking status, 76
cleaning, 64
transporting, 66

R

Replacing ink cartridges, 54

S

Safety information, 7
Service, 88
Smeared prints, 83, 84
Software
uninstalling, 17
Specifications
ink cartridges, 93
mechanical, 100
paper, 95
Speed, increasing, 84
Stacker, 92
Status Monitor
Windows, 76
System requirements, 94

T

Transporting product, 66

U

USB
connector, 91

W

Windows
accessing printer settings, 16
status monitor, 76