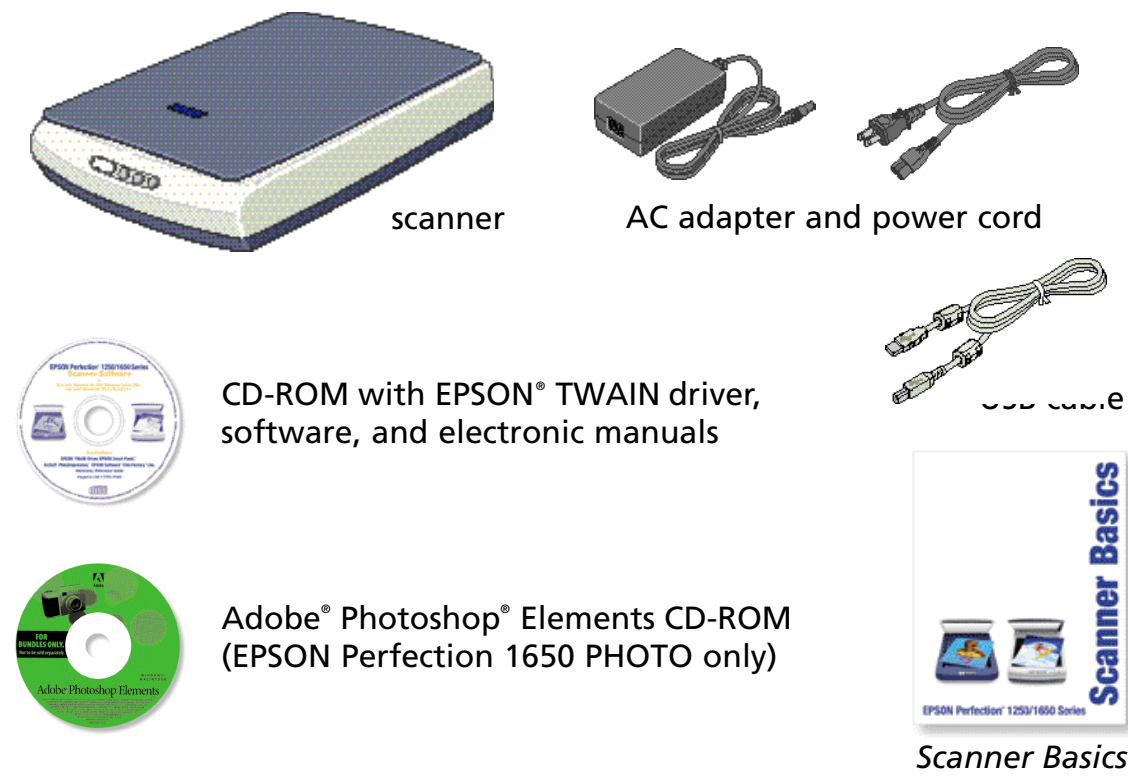


# Start Here

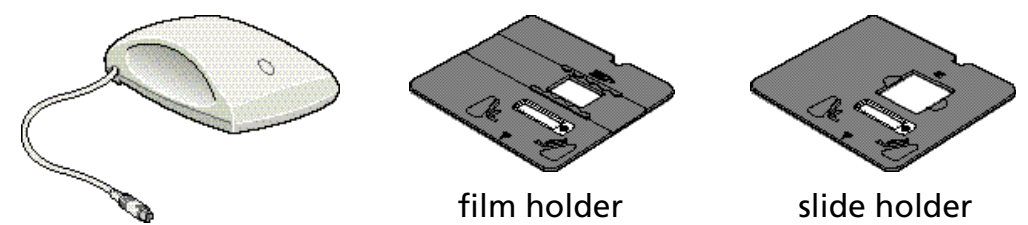
## 1 Unpack your Scanner

1 Make sure you have the following items:

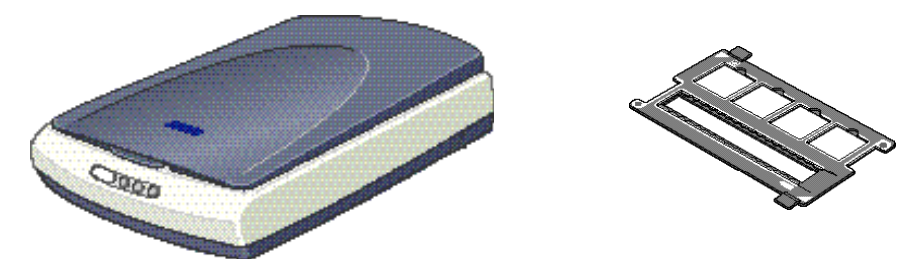
**NOTE** The scanner shown on this sheet is the EPSON Perfection 1650, but the instructions also apply to the EPSON Perfection 1250, 1250 PHOTO, and 1650 PHOTO scanners. Any differences between the versions are noted in the text.



The EPSON Perfection 1250 PHOTO comes with a transparency unit, a film holder, and a slide holder.

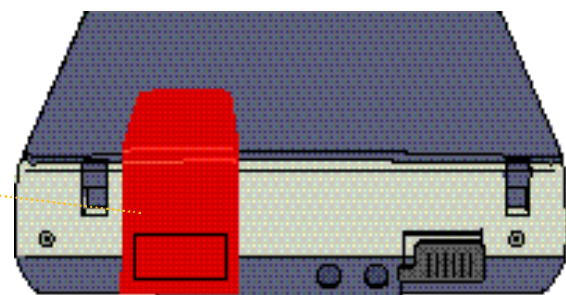


The EPSON Perfection 1650 PHOTO comes with a transparency unit built into the scanner cover and a holder for film and slides.



2 Remove all the packing tape, but leave the red sticker in place until instructed to remove it.

**IMPORTANT!** Leave the red sticker in place until you are instructed to remove it.



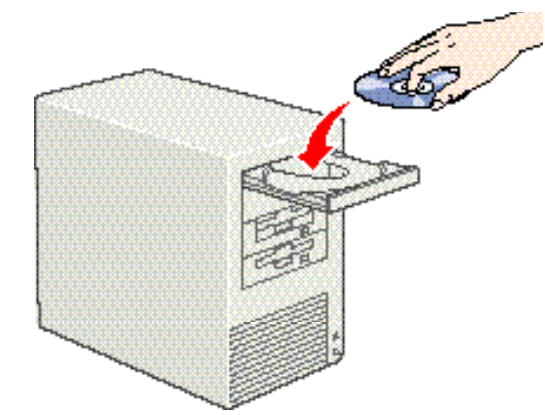
## 2 Install the Software

The scanner software CD-ROM that comes with your scanner includes your EPSON TWAIN driver, software, and electronic manuals.

You must install your software before connecting the scanner to your computer.

### Windows®

- 1 Insert the scanner software CD-ROM in the CD-ROM or DVD drive. (If the CD-ROM doesn't automatically start, double-click My Computer, double-click the EPSON CD-ROM icon, then double-click the EPSON icon.)
- 2 Read the license agreement, then click **Agree**.
- 3 At the Software Installation screen, select the software you want to install.  
To select or deselect an application, click the box next to the software name. (You cannot deselect the required software.)
- 4 After you've made your software selections, click **Install**.



- 5 Before each application is installed, a screen appears allowing you to return to the main Software Installation screen or continue the installation.

Click **Next** to continue the installation. Follow the on screen instructions for each application. Note that EPSON Smart Panel™ installs in several steps.

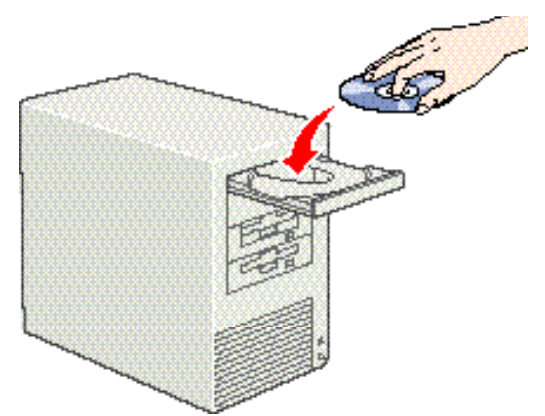


- 6 After all the software is installed, you see this screen. Click **Exit**, then follow the instructions on the back of this sheet.



### Macintosh®

- 1 Insert the scanner software CD-ROM in the CD-ROM or DVD drive. (If necessary, double-click the EPSON CD-ROM icon to open it.)
- 2 Double-click the EPSON icon.
- 3 Read the license agreement, then click **Agree**.
- 4 When the Install EPSON TWAIN screen appears, click **Next**.



- 5 When the EPSON TWAIN 5 Installer screen appears, click **Install**.  
When the scanner software installation is complete, click **Restart**.  
Do not remove your CD-ROM.



After your Macintosh restarts, you can install the rest of your software.

- 6 At the Software Installation screen, select the software you want to install. (If you don't see this screen, double-click the EPSON CD-ROM icon to open it, if necessary, then double-click the EPSON icon.)



To select or deselect an application, click the box next to the software name. (You cannot deselect the required software.)

- 7 After you've made your software selections, click **Install**.

- 8 Before each application is installed, a screen appears allowing you to return to the main Software Installation screen or continue the installation.

Click **Next** to continue the installation. Follow the on screen instructions for each application. Note that EPSON Smart Panel installs in several steps.

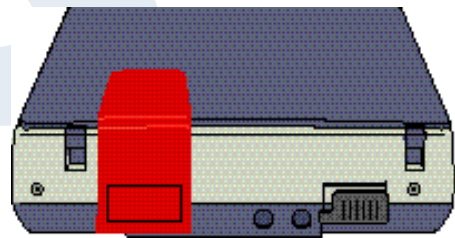


- 9 After all the software is installed, you see this screen. Click **Exit**, then follow the instructions on the back of this sheet.



# 3 Connect the Scanner

1 Remove the red sticker from the back of the scanner.

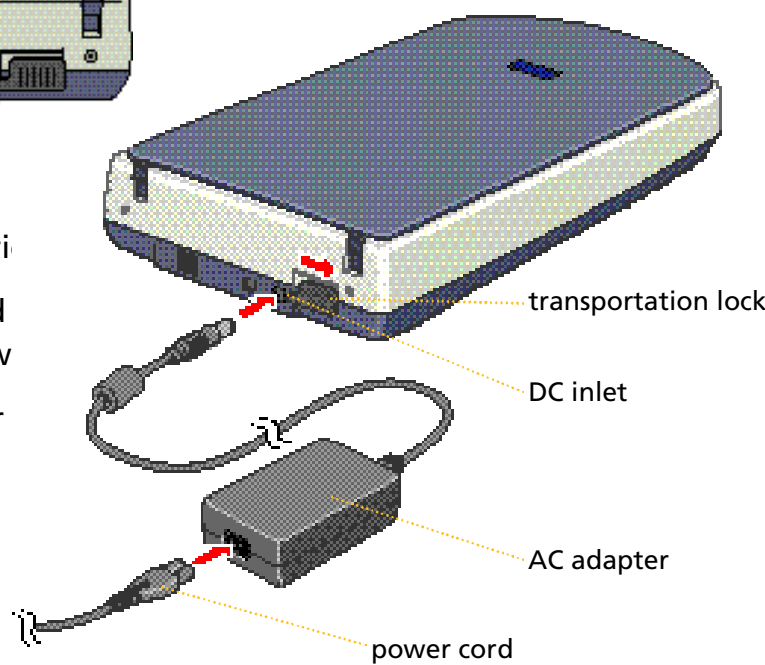


2 Slide the transportation lock all the way to the right.

3 Connect the power cord and AC adapter, as shown.

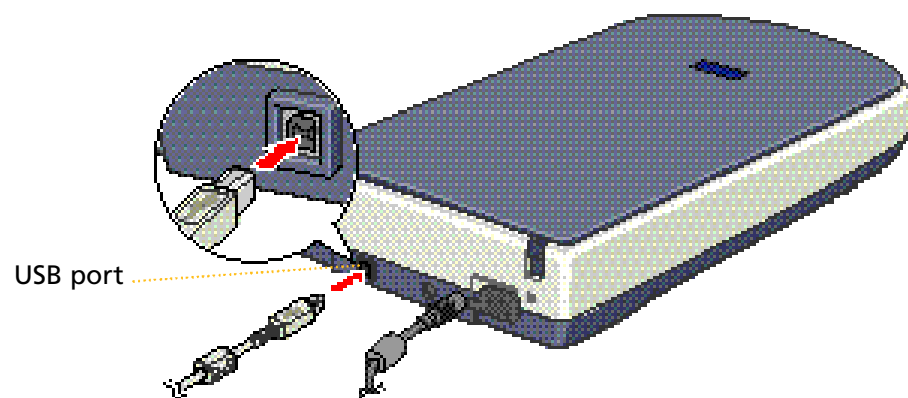
4 Connect the AC adapter to the DC inlet.

5 Plug the other end of the power cord into an electrical outlet.



**NOTE** The scanner does not have a power button. It turns on when you connect the AC adapter and plug in the power cord.

6 Plug the square connector on the USB cable into the USB connector on the back of the scanner.



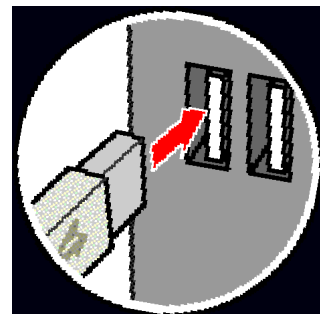
**NOTE** The USB connector on the EPSON Perfection 1250 and 1250 PHOTO is located next to the transparency unit connector.

If you are using Windows 2000, click Yes when you see this screen to continue the installation:



7 Then plug the flat connector into any available USB port on your computer or USB hub.

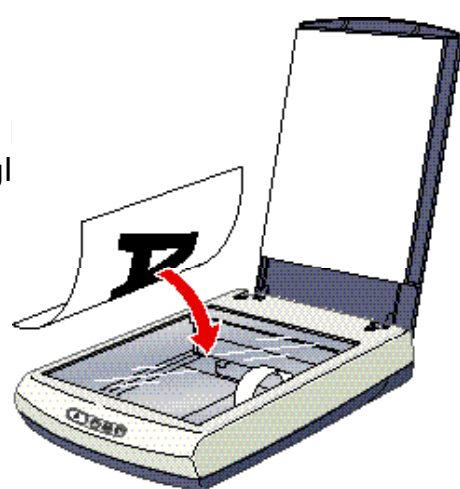
**NOTE** Your system may not work correctly if you use a USB cable other than the one supplied by EPSON or if you connect your scanner through more than one hub.



# 4 Your First Scan

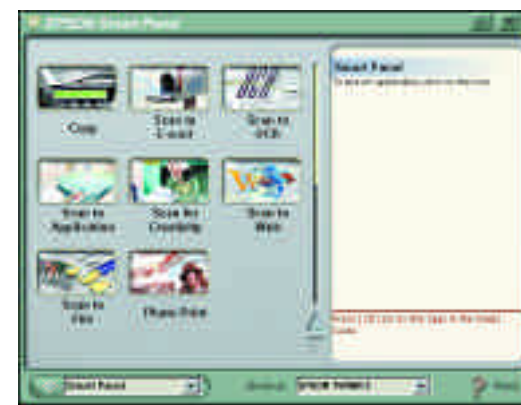
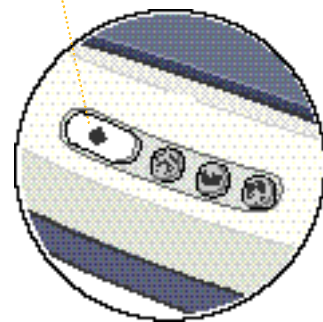
To scan using the Start button and EPSON Smart Panel, follow these steps:

1 Raise the scanner lid and place your face down on the document table glass.



2 Press the Start button on the scanner's control panel. EPSON Smart Panel automatically opens.

Start button

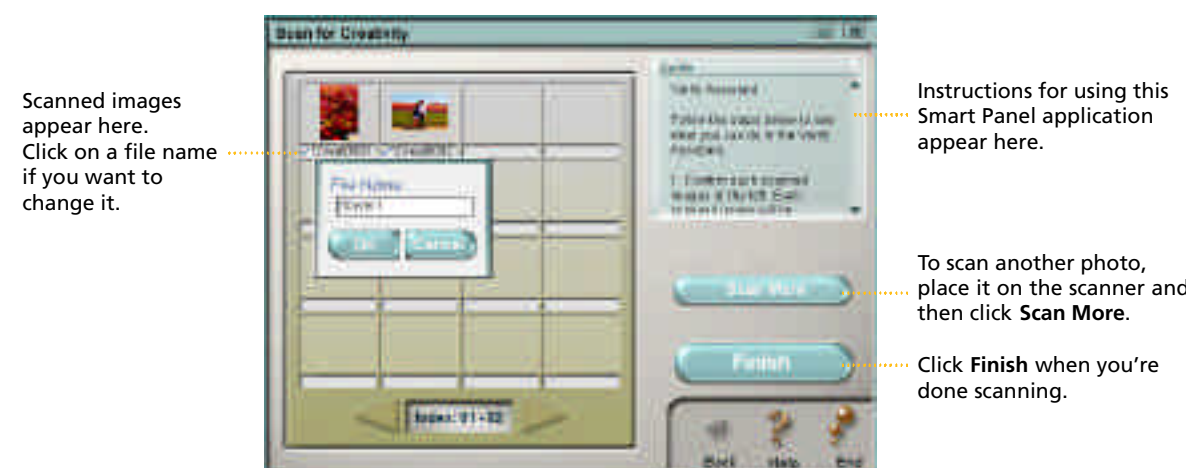


3 Click the Scan for Creativity icon.

A progress meter appears on your screen and your photo is automatically scanned.



4 After your photo is scanned, the Scan for Creativity dialog box opens. If you want to scan another photo, place it on the document table glass, close the scanner cover, and click Scan More. Otherwise, click Finish.



5 ArcSoft™ PhotoImpression™ automatically opens and your scanned images appear on screen. Select the image you want to use. Then edit your image, use it in a PhotoImpression template for calendars or greeting cards, save it, or print it.

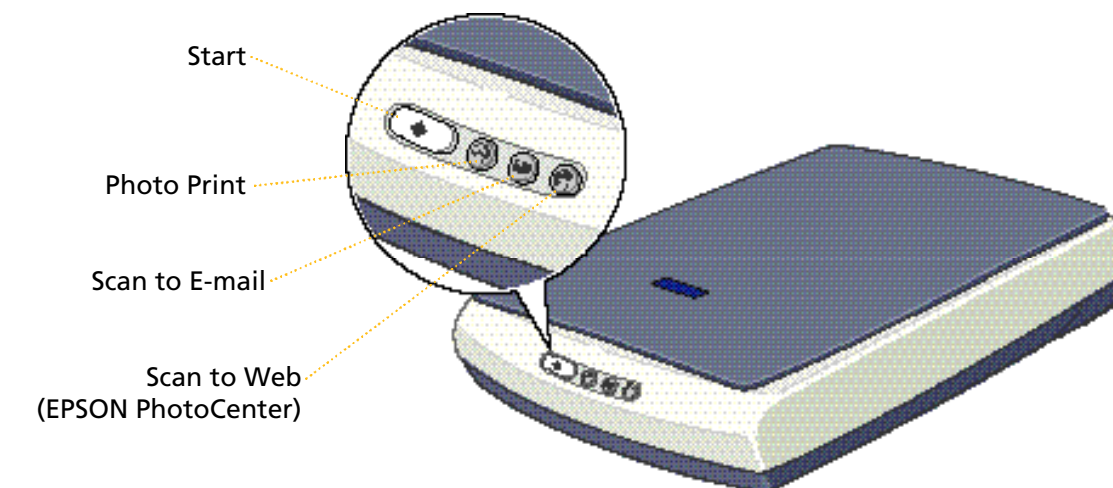


this section changes based on what is selected above

**NOTE** For help with PhotoImpression, click the question mark in the upper right corner of the screen.

## Using the Scanner Buttons

The scanner buttons work with EPSON Smart Panel to provide shortcuts to most common scanning functions. You can use them to scan your photos to the EPSON PhotoCenter™ (a free photo sharing website), attach your photo to an e-mail, or automatically scan and print a photo. For more information, see your Scanner Basics guide and electronic EPSON Smart Panel User's Guide.



## Recommended Settings

If you are using the scanner buttons and EPSON Smart Panel, the software automatically selects the best settings for your scan. If you want to scan in Manual mode and select settings yourself, see your Scanner Basics guide for instructions. For the best scans, you need to select a resolution setting (dpi) that balances quality with file size. The optimum resolution also depends on how you plan to use your scanned image.

- If you are scanning an image to view on the Web, select a resolution of 72 to 96 dpi.
- If you are sending the image by e-mail, select a resolution of 96 to 150 dpi.
- If you are going to print your scanned image, you need to scan at a higher resolution. Here are some recommended resolution settings:

Image type	Scanning resolution for printing
Photograph or magazine	300 dpi
Small photograph to be enlarged	300 dpi to 3200 dpi
Newspaper (text only), Text for OCR, Text with images	400 dpi
Line art	300 to 3200 dpi
35 mm film (negative) or 35 mm slide (positive)	300 to 3200 dpi

## Where To Get Help

Your scanner includes a variety of printed and electronic manuals. See your Scanner Basics guide for a complete list of the resources available to you.

EPSON provides technical assistance 24 hours a day through the electronic support services and automated telephone services listed here:

Service	Access
World Wide Web	From the Internet, you can reach EPSON Support at <a href="http://support.epson.com">http://support.epson.com</a> . At this site, you can download drivers and other files, look at product documentation, access troubleshooting information, and receive technical advice through e-mail.
Automated Telephone Services	A variety of automated help services are available 24 hours a day, 7 days a week. To use these services, you must have a touch tone telephone and call (800) 922-8911. Your SoundAdvice™ Express Code is 70060. Use this code to quickly select your scanner in SoundAdvice.

For help with your software, see "Where to Get Help" in your Scanner Basics guide.

EPSON is a registered trademark and EPSON Smart Panel is a trademark of SEIKO EPSON CORPORATION. EPSON Perfection is a registered trademark, and EPSON PhotoCenter and SoundAdvice are service marks, of Epson America, Inc.

General Notice: Other product names used herein are for identification purposes only and may be trademarks of their respective owners. EPSON disclaims any and all rights in those marks.

Printed on recycled paper  
Copyright © 2001 by Epson America, Inc.