

## Printer Specifications

### Printing

Printing method	On-demand ink jet
Nozzle configuration	180 nozzles × 6 (black, cyan, magenta, yellow, light cyan, light magenta)
Resolution	Maximum 1440 × 720 dpi
Maximum printable width	43.78 inches on 44-inch paper
Maximum print speed	231 ft <sup>2</sup> /hour
Print direction	Bidirectional
Control code	ESC/P® Raster
Line spacing	1/6 inch (default), programmable in 1/720-inch increments
Paper feed speed	215 ± 10 milliseconds per 1/6-inch line
RAM	128MB (fixed)

### Engine Reliability

Total print volume	20,000 B0 images, 30% coverage
Print head life	28 billion dots per nozzle
Periodic maintenance	Waste ink system requires replacement approximately every two years based on 25% duty cycle (parts and labor not covered under warranty)
Cutter blade life	Approximately 2000 B0+ sheets (EPSON media up to 4.33 mil thick)

**Electrical**

Specification	120 V Model	220–240 V Model
Input voltage range	90 to 132 V	208 to 264 V
Rated frequency range	50 to 60 Hz	
Input frequency range	49 to 61 Hz	
Rated current	1.4 A	0.7 A
Power consumption	Approx. 130.5 W (ISO/IEC 10561 Letter Pattern); 29 W or less in standby mode	

**Note:**

This product is also made for IT power systems with phase-to-phase voltage 220 to 240 V. See the printer's label for voltage information.

**Ink Cartridges**

Print yield	<p><i>Photographic Dye ink:</i></p> <p>Approx. 28 pages/A0 (720 dpi, 40% duty); approx. 6400 pages/A4 (360 dpi, 5% duty)</p> <p><i>Archival ink:</i></p> <p>Approx. 30 pages/A0 (720 dpi, 40% duty); approx. 7,400 pages/A4 (360 dpi, 5% duty)</p> <p>Print yield may vary, depending on how often you run cleaning cycles and how much you use the printer; yield of the initial cartridge set is reduced because of ink charging</p>
Cartridge life	<p>2 years from the production date</p> <p><i>Photographic Dye ink:</i></p> <p>2 years after opening package, at 77 °F (25 °C)</p> <p><i>Archival ink:</i></p> <p>6 months after opening package, at 77 °F (25 °C)</p>
Dimensions	<p>Height: 6.6 inches (168 mm) Depth: 13.54 inches (344 mm) Width: 1.19 inches (30.3 mm)</p>
Weight	Approximately 1.9 lb (860 g)
Capacity	16.9 oz (500 ml)

Temperature	<p><i>Storage (uninstalled):</i></p> <p>–22 to 104 °F (–30 to 40 °C) 1 month at 104 °F (40 °C)</p> <p><i>Storage (installed):</i></p> <p>–4 to 104 °F (–20 to 40 °C) 1 month at 104 °F (40 °C)</p> <p><i>Transit:</i></p> <p>–22 to 140 °F (–30 to 60 °C) 1 month at 104 °F (40 °C) 120 hours at 140 °F (60 °C)</p> <p><i>Freezing:</i></p> <p>5 °F (–15 °C); ink thaws and is usable after at least 3 hours at 77 °F (25 °C)</p>
-------------	---

**Mechanical**

Paper feed method	Friction
Paper path	Roll paper with manual insertion; cut sheets with either autoloader or manual insertion
Dimensions	<p>Width: 73.4 inches (1865 mm) Depth: 26.5 inches (673 mm) Height: 48.2 inches (1225 mm)</p>
Weight	291 lb (132 kg) with stand

**Environmental**

Temperature	<p>Operation: 50 to 95 °F (10 to 35 °C)</p> <p>Storage: –4 to 104 °F (–20 to 40 °C) 1 month at 104 °F (40 °C)</p> <p>Transit: –4 to 140 °F (–20 to 60 °C), stored in shipping container 120 hours at 140 °F (60 °C)</p>
Humidity (without condensation)	<p>Operation: 20 to 80% RH</p> <p>Storage: 20 to 85% RH</p> <p>Transit: 5 to 85% RH (stored in shipping container)</p>

**Safety Approvals**

Safety standards	UL 1950, CSA C22.2 950
EMC	FCC part 15 subpart B, class A CSA C108.8 class A

## Interfaces

### Parallel interface

The built-in parallel interface supports compatibility and ECP modes.

#### Compatibility mode

##### Forward channel

Data format 8-bit parallel, IEEE-1284 compatibility mode

Synchronization  $\overline{\text{STROBE}}$  pulse

Handshake timing BUSY and  $\overline{\text{ACKNLG}}$  signals

Signal level TTL compatible

Connector 57-30360 Amphenol connector or equivalent

##### Reverse channel

Transmission mode IEEE-1284 Nibble mode

Adaptable connector 57-30360 Amphenol connector or equivalent

Synchronization Refer to the IEEE-1284 specification

Handshaking Refer to the IEEE-1284 specification

Signal level IEEE-1284 Level 1 device

Data transmission timing Refer to the IEEE-1284 specification

#### ECP mode

Transmission mode IEEE-1284 ECP mode

Adaptable connector 57-30360 Amphenol connector or equivalent

Synchronization Refer to the IEEE-1284 specification

Handshaking Refer to the IEEE-1284 specification

Signal level IEEE-1284 Level 1 device

Data transmission timing Refer to the IEEE-1284 specification

### USB interface

Standard Based on Universal Serial Bus Specifications Revision 1.1, Universal Serial Bus Device Class Definition for Printing Devices Version 1.1

Bit rate Approximately 12M bps (full speed device)

Data encoding NRZI

Connector USB Series B

Recommended cable length 6 feet

### Supported Connections

System	Parallel (standard)	USB (standard)	IEEE 1394 (standard)	Ethernet® (optional)
Win 95	X			X
Win 98	X	X*		X
Win Me	X	X*	X	X
Win NT	X			X
Win 2000	X	X*	X	X
Mac® OS 8.51		X		X
Mac OS 8.6		X	X	X
Mac OS 9.x		X	X	X

\* Supported on pre-installed operating systems, not upgraded from earlier versions of Windows®.

## Paper

### *Cut sheet paper specifications*

Size	Dimensions in inches	Dimensions in millimeters	Thickness
Super B0	44 × 62.2	1118 × 1580	3.15 to 19.7 mil (0.08 to .5 mm)
B0	40.5 × 57.3	1030 × 1456	
Super A0	36 × 50.9	914 × 1292	
A0	33 × 46	841 × 1189	
US E	34 × 44	864 × 1118	
B1	28.7 × 40.5	728 × 1030	3.15 to 59 mil (0.08 to 1.5 mm)
US D	22 × 34	559 × 864	
A1	23.4 × 33	594 × 841	
B2	20.25 × 28.7	515 × 728	
A2	16.5 × 23.4	420 × 594	
Super A3/B	13 × 19	329 × 483	
US C	17 × 22	432 × 559	
B3	14.3 × 20.25	364 × 515	
US B (ledger)	11 × 17	279 × 432	
A3	11.7 × 16.5	297 × 420	

### *Roll paper specifications*

Rolls loaded	Maximum roll diameter	Width	Thickness
2 rolls	5.90 in. (150 mm)	13 to 44.02 in.	3.15 to 19.7 mil (0.08 to 0.5 mm)
1 roll	4.05 in. (103 mm)	330 to 1118 mm	

### Notes:

- Poor quality paper may reduce print quality and cause paper jams and other problems. If you encounter problems, switch to a higher grade of paper.
- Do not use curled, folded, or deckle-edge paper.
- Depending on the media, feed and print quality are guaranteed on paper thicknesses of 3.15 to 4.33 mil (0.08 to 0.11 mm), 64 to 90 gsm.
- For best results, use paper under the following conditions:  
 Temperature: 59 to 77 °F (15 to 25 °C)  
 Humidity: 40 to 60% RH

## Consumables and Accessories

### Ink Cartridges

Use these 500 ml ink cartridges before the expiration date on the package:

#### EPSON Stylus Pro 10000 Photographic Dye Ink

Cartridge	Part number
Black	T499201
Cyan	T502201
Light Cyan	T504201
Magenta	T501201
Light Magenta	T503201
Yellow	T500201

#### EPSON Stylus Pro 10000 Archival Ink

Cartridge	Part number
Black	T511201
Cyan	T514201
Light Cyan	T516201
Magenta	T513201
Light Magenta	T515201
Yellow	T512201

### EPSON Paper and Other Media

#### Media for Photographic Dye Ink model

Paper type	Roll sizes	Sheet sizes (inches)
Presentation Matte Paper	44-inch roll: S041220 36-inch roll: S041221 24-inch roll: S041295	—
Glossy Paper Heavyweight	44-inch roll: S041226 36-inch roll: S041227 24-inch roll: S041291	—
Semigloss Paper Heavyweight	44-inch roll: S041228 36-inch roll: S041229 24-inch roll: S041291	—
Photo Glossy Paper	44-inch roll: SP91002 36-inch roll: SP91001 24-inch roll: SP91021	—
Photo Semigloss Paper	44-inch roll: SP91004 36-inch roll: SP91003 24-inch roll: SP91022	—
Backlight Film	44-inch roll: S041484 36-inch roll: S041483 24-inch roll: S041482	11.7 × 16.5 (A3): S041131 16.5 × 23.4 (A2): S041130
Posterboard Semigloss	—	20.25 × 28.75: S041237 28 × 40: S041236

#### Media for Photographic Dye Ink model (continued)

Paper type	Roll sizes	Sheet sizes (inches)
Premium Glossy Photo Paper	13-inch roll: S041378 8.3-inch roll: S041376	11 × 17 (B): S041290 11.7 × 16.5 (A3): S041288 13 × 19 (SB): S041289
Premium Semigloss Photo Paper	—	Letter: S041331 13 × 19 (SB): S041327
Photo Quality Glossy Film	—	Letter: S041072 8.3 × 11.7 (A4): S041071 11 × 17 (B): S041075 13 × 19 (SB): S041074
Posterboard Semigloss	—	20.25 × 28.75: S041237 28 × 40: S041236
Premium Luster Photo Paper*	44-inch roll: S041463 36-inch roll: S041462 24-inch roll: S041461 13-inch roll: S041409 8.3-inch roll: S041408	Letter: S041405 11.7 × 16.5 (A3): S041406 13 × 19 (SB): S041407
Doubleweight Matte Paper	44-inch roll: S041387 36-inch roll: S041386 24-inch roll: S041385	—
Matte Paper - Heavyweight	—	Letter: S041257 11.7 × 16.5 (A3): S041260 13 × 19 (SB): S041263
Photo Paper	13-inch roll: S041233	Letter: S041141, S041271, S041272 8.3 × 11.7 (A4): S041140 11.7 × 16.5 (A3): S041142 11 × 17 (B): S041156 13 × 19 (SB): S041143 8.3 × 23.4 (Panaramic): S041145
Photo Quality Ink Jet Paper	—	11 × 17 (B): S041070 13 × 19 (SB): S041069 16.5 × 23.4 (A2): S041079 17 × 22 (C): S041171 16.5 × 49.21 (Banner): S041102
360 dpi paper	—	13 × 19 (SB): S041066

\* Requires optional 3-inch high tension spindle for roll paper.

*Media for Archival Ink model*

Paper type	Roll sizes	Sheet sizes (inches)
Doubleweight Matte Paper	44-inch roll: S041387 36-inch roll: S041386 24-inch roll: S041385	—
Glossy Paper Photo Weight	44-inch roll: S041389 22-inch roll: S041388	13 × 19 (SB): S041456
Smooth Fine Art Paper*	44-inch roll: S041433 36-inch roll: S041432 24-inch roll: S041431	24 × 30: S041434 36 × 44: S041435
Backlight Film	44-inch roll: S041484 36-inch roll: S041483 24-inch roll: S041482	—
Synthetic Paper**	44-inch roll: S041401 36-inch roll: S041400 24-inch roll: S041399	—
Adhesive Synthetic Paper	44-inch roll: S041404 36-inch roll: S041403 24-inch roll: S041402	—
Photo Glossy Paper	44-inch roll: SP91002 36-inch roll: SP91001 24-inch roll: SP91021	—
Photo Semigloss Paper	44-inch roll: SP91004 36-inch roll: SP91003 24-inch roll: SP91022	—
Premium Glossy Photo Paper	13-inch roll: S041378 8.3-inch roll: S041376	Letter: S041286 11.7 × 16.5 (A3): S041288 13 × 19 (SB): S041289 11 × 17 (B): S041290
Premium Semigloss Photo Paper	—	Letter: S041331 13 × 19 (SB): S041327
Adhesive Vinyl	44-inch roll: S041438 36-inch roll: S041437 24-inch roll: S041436	—
Canvas	44-inch roll: S041533 36-inch roll: S041532 24-inch roll: S041531	—
Premium Luster Photo Paper*	44-inch roll: S041463 36-inch roll: S041462 24-inch roll: S041461 13-inch roll: S041409 8.3-inch roll: S041408	Letter: S041405 11.7 × 16.5 (A3): S041406 13 × 19 (SB): S041407
Posterboard for Archival Ink	—	***
Textured Fine Art Paper*	44-inch roll: S041449 36-inch roll: S041448 24-inch roll: S041447	24 × 30: S041450 36 × 44: S041451
Tyvek® Brillion™	44-inch roll: S041496 36-inch roll: S041495 24-inch roll: S041494	—
Scrim Vinyl	***	—
Archival Matte	***	Letter: S041341 11.7 × 16.5 (A3): S041343 13 × 19 (SB): S041339

*Media for Archival Ink model (continued)*

Paper type	Roll sizes	Sheet sizes (inches)
Watercolor Paper - Radiant White	—	13 × 19 (SB): S041351

\* Requires optional 3-inch high tension spindle for roll paper

\*\* Requires optional 2-inch high tension spindle for roll paper

\*\*\*Not available at time of publication. Check the EPSON web site (<http://prographics.epson.com>) for product codes and availability.

**Options**

Option	Product Code
EpsonNet Internal Print Server (multiprotocol 10/100 BaseT Ethernet Type B interface card)	C823632A
Automatic Take-Up Reel System	C815172
Replacement 44-inch Take-Up Reel core	C815121
High tension spindle—2 inch	C811134
High tension spindle—3 inch	C811122
Replacement cutter blade*	C815131
Manual Media Cutting System**	C815182
Replacement cutter blade for Manual Media Cutting System	C815192
Additional 1-year EPSON Preferred Plus Service	EPP10B1
Additional 2-year EPSON Preferred Plus Service	EPP10B2

\* Replaces the blade for the printer's built-in cutter.

\*\* Designed for use with heavy media, which can damage the printer's built-in cutter.

## System Requirements

### Macintosh®

- ❑ For USB connection: Power Macintosh® G3, G4, or iMac™ series (System 8.5.1 through 9.1; System 9.1 recommended) with a compliant USB port and a shielded USB “AB” cable from Series A (computer) to Series B (printer) up to 6.6 ft (2 m) long

For IEEE 1394 connection: iMac DV, G3, or G4 series (System 8.6 or later with FireWire Update 2.1 or later; System 9.1 recommended) with a compliant IEEE 1394 port and a shielded IEEE 1394 cable

For 10/100 BaseT Ethernet connection: iMac, G3, or G4 series (System 8.5.1 through 9.1; System 9.1 recommended) with a network cable

- ❑ 350 MHz or higher processor
- ❑ 256MB of RAM
- ❑ At least 50MB free hard disk space to install the software, and at least 150MB free hard disk space for processing files (2GB or more recommended)
- ❑ Quad-speed (4x) or faster CD-ROM or DVD drive for installing the printer software

**Note:**

If you are not using Photo Printing Accelerator in your driver, or if you are using a software or hardware RIP, you must have a Power Macintosh G4 with a 500 MHz or higher processor and 512MB RAM to keep the printing running at full engine speed.

### Windows

- ❑ For parallel connection: IBM® -compatible PC running Windows 95, 98, Me, NT 4.0, or 2000; a high-speed bidirectional, IEEE-1284 compliant parallel cable, 6 to 10 ft (1.8 m) long, with a D-SUB, 25-pin, male connector for the computer and a 36-pin, Centronics® compatible connector for the printer

For USB connection: IBM-compatible PC running Windows 98, Me, or 2000 with a Windows compliant USB port and a shielded USB “AB” cable from Series A (computer) to Series B (printer) up to 6.6 ft (2 m) long

For IEEE 1394 (FireWire) connection: IBM-compatible PC running Windows Me or 2000, with a compliant IEEE 1394 port and a shielded IEEE 1394 cable

For 10/100 BaseT Ethernet connection: Ethernet equipped PC running Windows 95, 98, Me, NT 4.0, or 2000, with a network cable

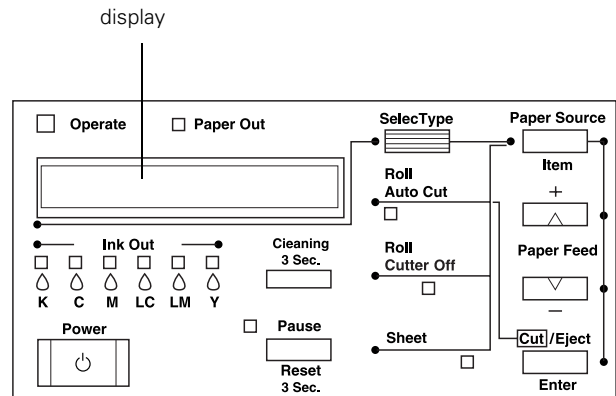
- ❑ Pentium® II 400 MHz or higher processor

- ❑ 256MB or RAM
- ❑ At least 50MB of free hard disk space to install the software, and at least 150MB of free hard disk space for processing files (2GB or more recommended)
- ❑ Quad-speed (4x) CD-ROM or DVD drive for installing the printer software

**Note:**

If you are not using Photo Printing Accelerator in your driver, or if you are using a software or hardware RIP, you must have a Pentium III 700 MHz or higher processor with 512MB RAM to keep the printer running at full engine speed.

## Control Panel



### Control Panel Buttons and Functions

Button	Function
Power	Turns the printer on and off.
Cleaning	Runs print head cleaning when pressed for 3 seconds.
Pause (Reset 3 Sec.)	Stops printing temporarily. Press a second time to resume printing. Clears print data from the printer memory if pressed and held for three seconds. Returns the printer to READY status when pressed in SelectType mode.
SelectType	Causes the printer to enter SelectType mode when pressed in READY status. In SelectType mode, this button can be used to select a desired menu.
Paper Source (Item)	Selects the paper source: Roll Auto Cut, Roll Cutter Off, or Sheet. If you press this button during the ink drying process, you will need to press Enter to select your setting. In SelectType mode, this button can be used to select an item in a menu.

Button	Function
Paper Feed ▲ (+)	Feeds paper in reverse. In SelecType mode, a desired parameter can be selected for the item (forward order).
Paper Feed ▼ (-)	Feeds paper forward. In SelecType mode, a desired parameter can be selected for the item (reverse order).
Cut/Eject (Enter)	Ejects the cut sheet when the <b>Sheet</b> light is on. Feeds the roll paper before cutting it when the <b>Roll Auto Cut</b> light is on. Feeds the roll paper a small amount when the <b>Roll Cutter Off</b> light is on. Feeds the roll paper and then prints a page line below the document when the <b>Roll Cutter Off</b> light and <b>Print Page Line</b> option are on. In SelecType mode, sets the selected parameter for an item as the default value.

## Control Panel Lights and Messages

### Normal printer operation

Display Message/Light	Explanation
READY/ Operate light on	Printer is ready to print.
PRINTING/ Operate light flashing	Printer is receiving data.
INK DRY <number> MIN/ Pause light flashing	Printer is paused to let ink dry. Wait for the number of minutes shown.
INK CHARGING <number>%/ Pause light on or flashing	Printer is charging ink.
RESET/ all lights flash briefly	Printer is resetting.
PRESS PAUSE BUTTON/ Pause light on	Press the <b>Pause</b> button to continue.
WAIT/ Pause light on or flashing	Printer is warming up, performing maintenance, or charging ink.
PAUSE/ Pause light on	Printer is paused. To resume printing, press the <b>Pause</b> button.
NO INK CARTRIDGE	Appears when an ink cartridge is being replaced.
PAT PRINTING/ Operate light flashing and Pause light is on	Print head alignment pattern is printing.
POWER OFF/ Operate light is flashing	Printer is shutting down.

### Error conditions

Display Message/Light	Explanation	Response
COVER OPEN/ Pause light on	Lower cover is open.	Close the lower cover.
INK COMPART. OPEN/ Pause light on	You are replacing the ink cartridge(s) and the ink compartment cover is open.	Close the ink compartment cover when you are finished replacing the ink cartridge(s).
INK LOW/ Ink Out light(s) flashing	Ink cartridge(s) are nearly empty (printing continues).	Replace ink cartridge(s) indicated by <b>Ink Out</b> light(s). See page 10.

### Error conditions (continued)

Display Message/Light	Explanation	Response
INK OUT/ Ink Out light(s) on	Ink cartridge(s) are empty (printing stops).	Replace ink cartridge(s) indicated by <b>Ink Out</b> light(s). See page 10.
LOAD PAPER/ Paper Out light on	Paper is being loaded, and the paper set lever is out, in the released position.	Push the paper set lever in after you load the paper.
LOAD ROLL PAPER or LOAD SHEET PAPER/ Paper Out light on	Paper source setting in print options is different from control panel.	Make sure the right paper is loaded and the paper source setting is the same on the control panel and print options.
MAINTENANCE REQ. <error number>	A printer part will need to be replaced soon.	Note the error number and contact EPSON.
MAINTENANCE REQ 0100	The waste ink system is almost full.	Contact EPSON to schedule service.
NO INK CARTRIDGE/ Ink Out light(s) on	Ink cartridge(s) not installed.	Install ink cartridges as indicated by the lights. See page 10.
NOZZLE CHECK ERROR	The printer was unable to clean the nozzles when it was powered on, or before beginning a print job.	Turn the printer off and then on again. When the automatic nozzle check is enabled (default), the printer automatically runs a nozzle check and cleaning cycle each time it is turned on.
OPTION I/F ERROR	Wrong interface card installed.	Turn off the printer and remove the card.
PAPER JAM/ Paper Out light flashing	Paper has jammed in the printer.	Remove the jammed paper. Then turn the printer off and on again.
PAPER NOT CUT/ Paper Out light flashing	Roll paper was not cut completely.	Cut the paper manually, then remove the cut paper from the printer. Reload paper.
	Cut paper did not fall off.	Remove the cut paper from the printer. Reload paper.
PAPER NOT STRAIGHT/ Paper Out light flashing	Paper slipped and fed into the printer at an angle.	Reload paper, making sure the edges are straight and aligned with both rows of holes.
PAPER OUT/ Paper Out light on	No paper is loaded.	Load paper.
	Paper ran out.	Remove any paper in the printer and load more paper. If the message appears during a print job, press the <b>Pause</b> button for 3 seconds to reset the printer. Then load paper and resend the job.
LOWER PAPER SET LVR/ Paper Out light on	Paper set lever was released during the printing process or another operation.	Push in the paper set lever. Start printing again from the beginning for best results.



*Error conditions (continued)*

Display Message/Light	Explanation	Response
RELOAD PAPER/ Paper Out light on	Paper could not be reversed into the printing position.	Remove the paper. Reload it so that the right and bottom edges are straight and aligned with both rows of holes.
	Image is too wide for the paper loaded in the printer.	Resize your image or load wider paper.
	Paper is not fully ejected.	Cut the paper at the paper insertion slot, then reload paper.
	PAPER NOT CUT error was cleared.	Reload paper.
REMOVE PAPER/ Paper Out light on	Paper is too thick for print head cleaning.	Pull out the paper set lever to remove the paper. Print head cleaning automatically starts. After cleaning, reload paper.
SERVICE REQ. <error number>/ All lights flashing	An error has occurred.	Note the error number, and turn the printer off and then on. If the message remains, contact EPSON.
SERVICE REQ. 00000100/ All lights flashing	The waste ink system is full.	Contact EPSON for service.
TURN PWR OFF AND ON	This message appears after you clear a paper jam.	Turn the printer off and then on again.
UNABLE TO PRINT	You tried to print a test pattern while an error condition was present or the ink compartment cover was open.	After 3 seconds, the message disappears. Press the <b>Pause</b> button to exit SelecType mode. If the message appears again, clear the error before you print.
WRONG CARTRIDGE/ Ink Out light(s) on	Wrong ink cartridge installed.	If you are installing ink cartridges for the first time, you must install the cartridges that came with the printer. If you are replacing ink cartridges, check the package and product code.

## Printing a Status Check

The status check shows the current default settings, amount of ink remaining in each cartridge, page count, and the status of various printer parts.

Follow these steps to print the status check:

1. Load a sheet of paper in the printer. (You can print test pages on roll paper, but you will waste paper.)
2. Press the **SelecType** button on the control panel until you see **TEST PRINT MENU** on the display.
3. Press the **Item** button until you see **STATUS CHECK=PRINT** on the display.
4. Press the **Enter** button. The status check prints. The amount of ink left or component life is indicated as follows:  
 E\*\*\*\*\*F = full (or full life remaining)  
 E\*\*\*\* F = 3/4 full (or 3/4 life remaining)  
 E\*\*\* F = 1/2 full (or 1/2 life remaining)  
 E\*\* F = 1/4 full (or 1/4 life remaining)  
 E\* F = nearly empty (or service life near end)  
 E F = empty (or service life ended)
5. Press the **SelecType** button to exit the Test Print menu.

## Checking Ink Levels and Component Life

You can view printer status information on the control panel display without printing a status check. Follow these steps:

1. Press the **SelecType** button on the control panel until you see **PRINTER STATUS MENU** on the display.
2. Press the **Item** button. You see **VERSION <number>** on the display (indicates the firmware version installed).
3. Continue pressing the **Item** button to display the amount remaining for each of the 6 inks or life remaining for a number of printer parts. The indicators read as follows:  
 E\*\*\*\*\*F = full (or full life remaining)  
 E\*\*\*\* F = 3/4 full (or 3/4 life remaining)  
 E\*\*\* F = 1/2 full (or 1/2 life remaining)  
 E\*\* F = 1/4 full (or 1/4 life remaining)  
 E\* F = nearly empty (or service life near end)  
 <nn>%F = less than 10% of ink or service life remaining

Following is a list of the items displayed. All parts on the list except the ink cartridges and paper cutter need to be replaced by an authorized EPSON service center.

INK LEFT-K (black)	TOTAL PRINTS
INK LEFT-C (cyan)	WASTE INK
INK LEFT-M (magenta)	CR MOTOR
INK LEFT-LC (light cyan)	PF MOTOR
INK LEFT-LM (light magenta)	HEAD UNIT
INK LEFT-Y (yellow)	CLEANER
CUTTER LIFE	

4. Press the **SelecType** button to exit the Printer Status menu.

## Replacing an Ink Cartridge

When one of the **Ink Out** lights is flashing (and **INK LOW** is displayed on the control panel), the corresponding cartridge is almost out of ink. Make sure you have a replacement cartridge. When the light stays on and **INK OUT** is displayed, the cartridge is empty. You must replace the cartridge before you can continue printing.

**Note:**

You must use the EPSON ink cartridges designed for your printer. Other ink cartridges will not work and may cause damage not covered by your warranty. If you don't use the cartridges designed for your model, you will see an error message.

Use only the following EPSON ink cartridges:

*EPSON Stylus Pro 10000 Photographic Dye Ink*

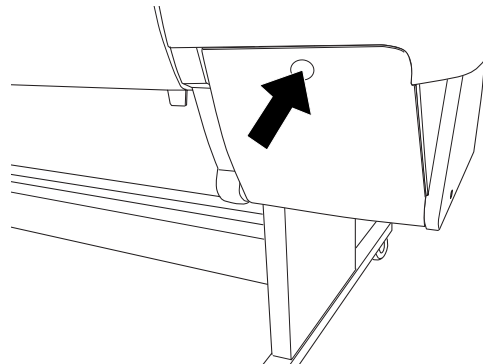
Cartridge	Part number
Black	T499201
Cyan	T502201
Light Cyan	T504201
Magenta	T501201
Light Magenta	T503201
Yellow	T500201

*EPSON Stylus Pro 10000 Archival Ink*

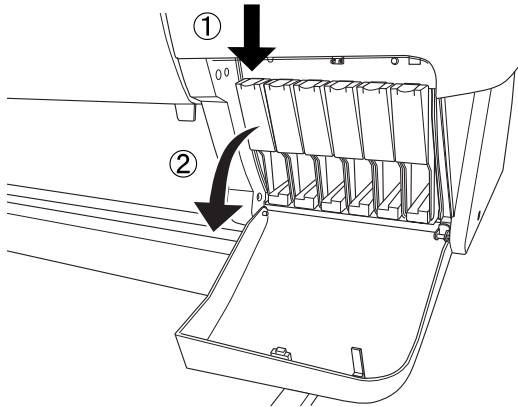
Cartridge	Part number
Black	T511201
Cyan	T514201
Light Cyan	T516201
Magenta	T513201
Light Magenta	T515201
Yellow	T512201

Before you start, make sure the printer is turned on. Then follow these steps to replace an ink cartridge:

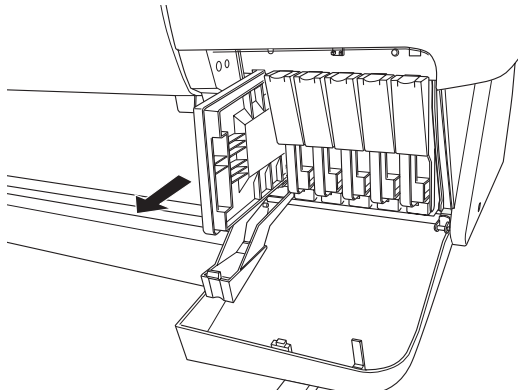
1. Note the color of the **Ink Out** light which is on or flashing. This is the cartridge that you need to replace.
2. Push the indentation on the ink compartment cover to release the lock and open the cover. **INK COMPART. OPEN** appears on the control panel display.



3. Locate the slot containing the low or empty ink cartridge (corresponding to the Ink Out light). Press down on the top of the clamp and pull it forward.

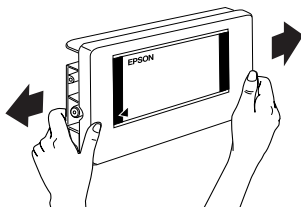


4. Carefully pull the cartridge straight out of the printer.



5. Make sure the replacement cartridge is the correct color, and remove it from its package.

If you're using Archival ink, shake the cartridge gently before installing it.



6. Hold the ink cartridge with the arrow mark on the left side and pointing to the rear of the printer. Then insert the ink cartridge into the slot. Don't force the cartridge.
7. Push the cartridge clamp back up. Make sure the corresponding Ink Out light goes off.
8. Close the ink compartment cover.

## Running a Nozzle Check

### Note:

Perform the steps in this section only if you have disabled the automatic nozzle check in maintenance mode. If you haven't, the printer automatically runs a nozzle check and cleans the print head each time it is powered on. Unless you see the message **NOZZLE CHECK ERROR** in the printer's display, the print head nozzles do not need to be cleaned.

The nozzle check prints a pattern of dots that lets you see if any print head nozzles are clogged. If any dots are missing, you can run a cleaning cycle to clear the nozzles.

Follow these steps to print the nozzle check:

1. Load a sheet of paper in the printer. (You can print the nozzle check on roll paper, but you will use more paper.)
2. Press the **SelecType** button on the control panel repeatedly until you see **TEST PRINT MENU** on the display.
3. Press the **Item** button. You see **NOZZLE CHECK=PRINT** on the display.
4. Press the **Enter** button. The nozzle check prints.

If all the lines on the pattern are complete, with no gaps in the pattern, the print head doesn't need cleaning.



If dots are missing from the pattern, as shown below, you need to run a cleaning cycle. See the following section for instructions.



## Running a Cleaning Cycle

**Note:**

Perform the steps in this section only if you have disabled the automatic nozzle check in maintenance mode. If you haven't, the printer automatically runs a nozzle check and cleaning cycle each time it is powered on.

If your printed image is unexpectedly light or dots are missing, you may need to run a cleaning cycle. This unclogs the print head nozzles so they can deliver ink properly.

The cleaning process uses ink, so run it only if print quality declines. Always run a nozzle check first to confirm that the print head needs cleaning; the nozzle check uses only a small amount of ink.

If you have installed the EPSON printer driver and utilities, you can run the Head Cleaning utility. See the *EPSON Stylus Pro 10000 Printer Guide* for instructions.

Follow these steps to run the cleaning cycle from the control panel:

1. Make sure none of the Ink Out lights is on or flashing. (If so, you need to replace the indicated ink cartridge before you can run a cleaning cycle.)
2. Press the **Cleaning** button and hold it for three seconds.  
The **Pause** light flashes as the printer cleans its print head. The cleaning cycle takes about one minute, and does not use any paper.

**Caution:**

To avoid damaging the printer, don't turn it off until the cleaning cycle is finished and the **Pause** light has stopped flashing.

3. When the **Pause** light goes off, run another nozzle check to confirm that the print head is clean.

You may need to run the cleaning cycle several times to get a clean nozzle check pattern. If the lines on the pattern still appear broken after several cleaning cycles, turn the printer off and leave it overnight, then clean the print head again the following morning. If you still see no improvement, contact EPSON for assistance.

## Aligning the Print Head

If banding appears on your printouts, or vertical lines are not straight, you need to align the print head. You can use the Print Head Alignment utility if you have the EPSON printer driver installed (see the *EPSON Stylus Pro 10000 Printer Guide* for instructions). If not, you can align the print head using the control panel. Both procedures align the head for all modes and resolutions.

## Aligning the Print Head from the Control Panel

You must use roll paper to print the alignment patterns. Two rows consisting of sets of 15 bars are printed across the width of the paper. It takes about 10 minutes to print both rows.

Follow these steps to align the print head using the control panel:

1. Load roll paper that is at least 24 inches wide.
2. Press the **SelecType** button until **HEAD ALIGNMENT MENU** is displayed.
3. Press the **Item** button. **PAPER THICK=STD** appears on the display.

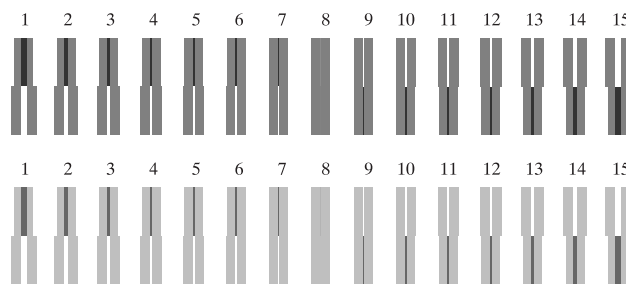
If you're using EPSON paper, leave this setting on **STD**.

If you're using other media, enter the thickness value of the paper in 0.1 mm increments by pressing the + or - button.

4. Press the **Enter** button to save the setting. **ADJUST.PATT.=ALL** appears on the display.
5. Press the **Enter** button to print both rows of alignment patterns.

If you want to print a single row of alignment patterns, press the + or - button until the row number appears. Then press the **Enter** button.

6. Examine the first row. You see a series of patterns similar to the pattern below across the width of the paper. Determine which bar in the first pattern has the smallest gaps. In the example below, #8 has the smallest gaps.



7. Look at the other patterns in the first row to see if the same number consistently has the smallest gaps. If not, choose the number that generally has the smallest gaps.
8. Check the control panel display. Use the + or - button to select the best aligned bar for row #1. Then press the **Enter** button to register the setting.
9. Repeat steps 6 through 8 for the second row of patterns.

10. If you chose a bar that generally, but not consistently, had the smallest gaps, print the row again. Then repeat steps 6 through 8 for that row. Repeat this step until you can choose a bar that is consistently the best aligned in every pattern in the row.
11. The print head is aligned when your printout shows that bar #8 (the current alignment setting) shows the smallest gaps for both rows. Press the **Pause** button to exit head alignment mode and return to normal printer operation.

## Using Hex Dump Mode

You can use the printer's hex dump mode to identify problems if you know how to interpret hex code, or you can fax the hex printout to a technical support representative.

Make sure the printer has paper loaded and is turned off. Then follow these steps:

1. Press and hold the **Pause** button while you press the **Power** button to turn on the printer. **HEX DUMP=PRINT** appears on the display.
2. Press the **Enter** button.
3. Send your problem file to the printer.  
The data in the print buffer is printed with 16-byte hex data in the left column and corresponding ASCII characters in the right column. If the last data is less than 16 bytes, you need to press the **Pause** button to print it.
4. When you're done, press the **Power** button to turn the printer off and exit maintenance mode.

## Transporting or Storing the Printer

Follow these guidelines for transporting or storing the printer:

- ❑ Contact EPSON if you need to store your printer for an extended period (two years for the Photographic Dye Ink model, or six months for the Archival Ink model). A service technician must drain all ink from the printer before it is stored.
- ❑ To ship the printer, you should repack the printer using the original box and packing materials, and you may need to drain the ink from the printer. Then follow the instructions in "Preparing the Printer for Shipment" on the right.
- ❑ If you are moving the printer a short distance (for example, in the same building), you can move the printer on its stand. Follow the instructions in "Moving the Printer on the Stand" on page 14.

## Preparing the Printer for Shipment

Follow the instructions below to prepare the printer for shipment:

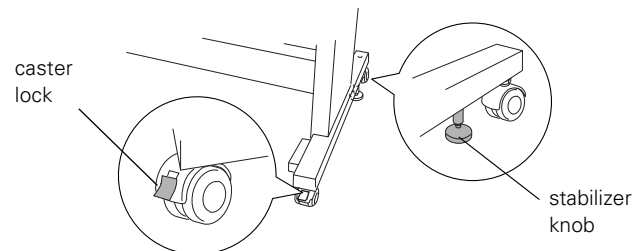
1. First turn off the printer and make sure the print head is in the home (far right) position. If not, turn the printer back on, wait until the print head moves to the home position, then turn off the printer.
2. Remove the following parts:
  - ❑ Ink cartridges
  - ❑ Power cord
  - ❑ Interface cable
  - ❑ Paper hammock
  - ❑ All paper or other media
  - ❑ Roll paper spindles
  - ❑ Optional Automatic Take-Up Reel (if installed)
  - ❑ Optional manual cutter (if installed)

After you remove the ink cartridges, store them in separate, resealable bags.

**Caution:**

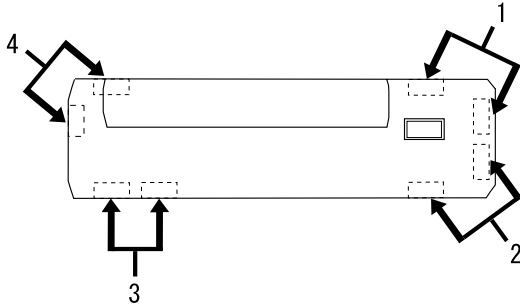
Be sure that the printer is off before you remove the ink cartridges. Otherwise the ink valves may not close properly. If for any reason the printer will not be level during shipping, a service technician must drain all ink from the printer before it is shipped.

3. Make sure the ink cartridge clamps and cover are closed.
4. Make sure the casters on the leg assembly are locked, and the two stabilizer knobs are touching the floor.



5. Remove the two wing nuts underneath the printer. Keep them in a safe place.

6. Have four people lift the printer off of the stand, using the hand grips located at the four corners of the printer. Lift the back of the printer first, tilt it slightly to the front, then slide it back to remove it.



**Warning:**

The printer weighs approximately 291 lb (132 kg). Always have four people lift it, using the hand grip areas illustrated above.

7. Keep the printer level while you move it.

## Setting Up the Printer After Transporting It

Setting up the printer after transporting it is almost identical to setting it up for the first time. Whenever you set up the printer, see the *Unpacking and Assembly Guide*, and note the following points:

- ❑ Don't forget to remove any protective material (such as tape from the ink cartridge clamps).
- ❑ If the automatic nozzle check is enabled (default), the printer automatically runs a nozzle check and cleaning cycle when you turn it on. You may also need to realign the print head (see page 12) to ensure good print quality.

## Moving the Printer on the Stand

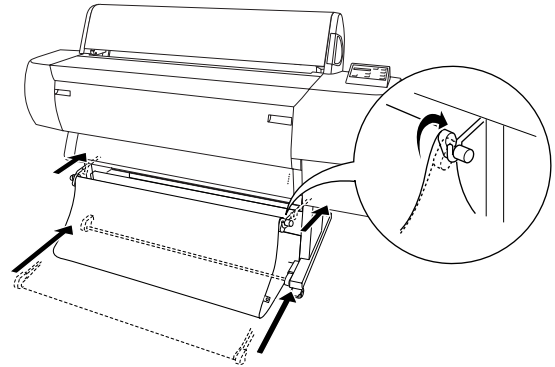
When you want to move the printer a short distance, such as within the same building or facility, you can roll the printer on its casters. Follow these steps:

**Caution:**

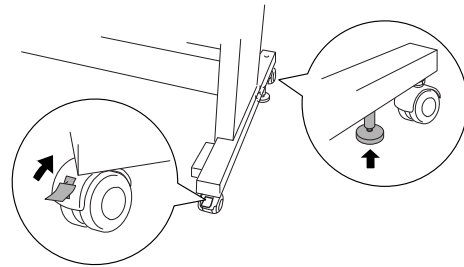
Do not roll the printer on angled or uneven surfaces.

1. Make sure that the power cord, interface cable, roll paper spindles, and all paper are removed, and the roll paper cover and lower cover are closed.

2. Fully insert the upper and lower hammock guides, then roll up the paper hammock.



3. Release the front casters and retract the stabilizer knobs.



4. Carefully roll the printer to its new location. Relock the casters and extend the stabilizer knobs after moving.

The first time you start printing after moving the printer, you may need to realign the print head (see page 12) to ensure good print quality. If you see the message **NOZZLE CHECK ERROR** on the display, turn the printer off and then on again. The printer automatically runs a nozzle check and cleaning cycle whenever it is turned on.

## Replacing the Waste Ink System

About every two years of normal usage (25% duty cycle) or after 12,000 B1-size prints, you must have your authorized EPSON servicer replace the waste ink system. This is necessary to prevent damage to the print head and maintain print quality. Parts and labor for this service are not covered under the terms of the limited warranty.

You can monitor the status of the waste ink system using the control panel or by checking the Ink Pad number displayed on the nozzle check print.

The printer displays the following message on the control panel when the waste ink system is almost full:

**MAINTENANCE REQ. 0100**

You should call to schedule service at this point. When the waste ink system is at full capacity, the printer stops and displays the following message:

**SERVICE REQ. 00000100**

## Related Documentation

CPD-12208	EPSON Stylus Pro 10000 Printer Guide
CPD-12209	EPSON Stylus Pro 10000 Quick Reference Guide
4013586-00 C01	EPSON Stylus Pro 100000/10000CF Unpacking and Assembly Guide
TM-SP10000	EPSON Stylus Pro 10000 Service Manual
PL-SP10000	EPSON Stylus Pro 10000 Parts Price List