



# Network Guide

---

## **Copyright and Trademarks**

No part of this publication may be reproduced, stored in a retrieval system, or transmitted in any form or by any means, mechanical, photocopying, recording, or otherwise, without the prior written permission of Seiko Epson Corporation. No patent liability is assumed with respect to the use of the information contained herein. Neither is any liability assumed for damages resulting from the use of the information contained herein.

Neither Seiko Epson Corporation nor its affiliates shall be liable to the purchaser of this product or third parties for damages, losses, costs, or expenses incurred by purchaser or third parties as a result of: accident, misuse, or abuse of this product or unauthorized modifications, repairs, or alterations to this product, or (excluding the U.S.) failure to strictly comply with Seiko Epson Corporation's operating and maintenance instructions.

Seiko Epson Corporation and its affiliates shall not be liable against any damages or problems arising from the use of any options or any consumable products other than those designated as Original Epson Products or Epson Approved Products by Seiko Epson Corporation. This publication and the features described herein are subject to change without notice.

Epson is a registered trademark and Epson Exceed Your Vision is a trademark of Seiko Epson Corporation.

EpsonNet Config incorporates compression code from the Info-ZIP group. There are no extra charges or costs due to the use of this code, and the original compression sources are freely available from <http://www.info-zip.org> on the Internet.

*General Notice: Other product names used herein are for identification purposes only and may be trademarks of their respective owners. Epson disclaims any and all rights in those marks.*

© 2007 Epson America, Inc. All rights reserved. 9/07

# Contents

<b>Chapter 1 Introduction</b>	<b>5</b>
About Your Printer .....	5
About This Guide .....	5
Warnings, Cautions, and Notes .....	6
Operating Environment .....	6
Features of the Network Interface .....	6
Network Interface Operation .....	7
Status lights .....	7
Network connector .....	7
About the Software .....	8
Terms and Concepts .....	8
<b>Chapter 2 Setting Up Your System for Network Printing</b>	<b>9</b>
Overview .....	9
Selecting a Printing Method .....	10
Printing from Windows .....	10
Printing from Macintosh .....	10
Installing Network Components on Your Computer .....	11
Windows Vista .....	11
Windows XP .....	12
Macintosh .....	13
Setting Up the Network Interface .....	14
Connecting the Network Interface to the Network .....	14
Configuring the Network Interface .....	14
Printing a Network Status Sheet .....	16
Installing the Printer Driver .....	16
Windows Vista .....	16
Windows XP .....	19
Macintosh .....	24
<b>Chapter 3 Network Software</b>	<b>25</b>
EpsonNet Config for Windows .....	25
About EpsonNet Config .....	25
Accessing the EpsonNet Config User's Guide .....	25
EpsonNet Config for Macintosh .....	26
About EpsonNet Config .....	26
Accessing the EpsonNet Config User's Guide .....	26

EpsonNet Config with Web Browser .....	27
About EpsonNet Config with Web Browser .....	27
Configuring the Network Interface Using EpsonNet Config with Web Browser .....	28
Opening Screen .....	30
Information - Network Screens .....	31
Configuration - Network Screens .....	32
Optional Screens .....	37

---

**Chapter 4 Troubleshooting** **39**

General Problems .....	39
Cannot configure the network interface or cannot print from the network. ....	39
Cannot print even if you have assigned the IP address to the computer and the printer. ....	39
Unable to start EpsonNet Config. ....	39
The message "EpsonNet Config cannot be used because no network is installed" appears when you start EpsonNet Config. ....	39
The message "Could not complete communicating configuration data" appears when you send settings to the network interface. ....	40
Unable to start EpsonNet Config with Web Browser. ....	40
Unable to set the IP address using the arp/ping commands. ....	40
The Model Name and IP Address do not appear in the EpsonNet Config dialog box. ....	40

---

**Chapter 5 Tips for Administrator** **41**

Network Setup Menu .....	41
Setting an IP Address Using the arp/ping Command .....	41
Checking the LAN .....	42
Setting and checking the new IP address .....	42
Uninstalling Software .....	43
Windows Vista .....	43
Windows XP .....	43
Macintosh .....	44

---

**Index** **45**

## Chapter 1

---

### Introduction

---

#### About Your Printer

---

Your printer has a built-in Ethernet interface and can connect anywhere on your network using 10Base-T or 100Base-TX. The built-in Ethernet interface, which is called the network interface in this manual, automatically selects the correct standard when it connects to a network. In addition, it supports and automatically selects the IEEE 802.2, IEEE 802.3, Ethernet II, and Ethernet SNAP network protocols.

Because the network interface supports multiple protocols and automatically detects protocols on your network, you can print from Windows<sup>®</sup> and Mac OS<sup>®</sup> X applications.

Use EpsonNet Config, included on the printer software CD-ROM, to configure the network interface for use on a TCP/IP network.

If you want to configure the network interface for protocols such as TCP/IP, AppleTalk<sup>®</sup>, IPP, and SNMP, use EpsonNet Config to quickly and easily configure the network interface to use those protocols.

**Note:**

*The EpsonNet Config utility configures the network interface to work only with protocols that exist on your network. This does not imply that you can use all of the above-mentioned protocols on your network or operating system. The protocols that the network interface can use may vary depending on the operating system and the network configuration.*

---

#### About This Guide

This *Network Guide* contains information about using the network interface on a network. It includes how to set up the network interface, install the configuration software, and modify network settings of your printer and computers.

For information about your printer, see your *User's Guide* or *Printer Guide*.

**Note:**

- ❑ *This guide is written for network administrators, and many of the steps included here require detailed network knowledge and administrator rights.*
- ❑ *The term "network administrator" refers to the person responsible for maintaining the network. "Administrator" is synonymous with "Supervisor" in this guide.*
- ❑ *The term "network interface" refers to the built-in Ethernet interface of the printer in this guide.*

---

## Warnings, Cautions, and Notes



### Warnings

*must be followed carefully to avoid bodily injury.*



### Cautions

*must be observed to avoid damage to your equipment.*

### Notes

*contain important information and useful tips on the operation of your printer.*

---

## Operating Environment

The network interface supports the following environments.

OS	Protocol
Windows Vista™ or Vista x64 (Home, Professional, Business, or Ultimate version); Windows XP (Home, Professional, or Professional x64)	TCP/IP (using LPR or Standard TCP/IP Port)
	IPP
Macintosh® OS X 10.4.9 and above or OS X 10.5 and above	Bonjour
	TCP/IP
	AppleTalk

---

## Features of the Network Interface

- ❑ Connects your Epson printer using a built-in Ethernet interface, which is called the network interface in this manual, to the network.
- ❑ Supports multiple protocols, such as TCP/IP, AppleTalk, and IPP.
- ❑ Supports both 10Base-T and 100Base-TX.
- ❑ Supports DHCP.
- ❑ Supports Automatic Private IP Addressing (APIPA) that assigns an IP address automatically to the network interface even if there is no DHCP server on the network.
- ❑ Supports the Dynamic DNS function.
- ❑ Supports SNMP and MIB.
- ❑ Supports SNTP (Simple Network Time Protocol).

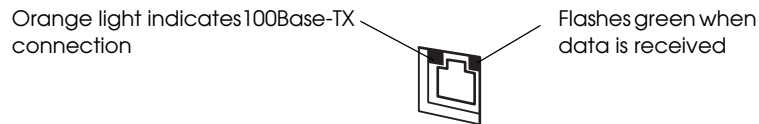
- ❑ Supports Bonjour on Mac 10.4.x and above.

---

## Network Interface Operation

### Status lights

The indicator lights on the network interface provide you with important information on the operation of the network interface.



The light on the left side indicates whether the network interface is connected to 10Base-T or 100Base-TX. The light is orange when the connection is 100Base-TX, green when the connection is 10Base-T.

The light on the right side is a data transmission light that flashes when the host interface receives data.

If the light on the left side is solid green and the light on the right side is off, the connection is disconnected.

### Network connector

RJ-45 connector: This connector is used to connect an Ethernet cable to a network. You can use this cable for both 10Base-T and 100Base-TX.



**Caution:**

*You must use a Category-6 shielded twisted-pair cable to connect the network interface to a network to prevent malfunctions.*

---

## **About the Software**

The software CD-ROM provided with your printer includes the following network software.

- ❑ EpsonNet Config for Windows is a Windows-based configuration utility for administrators that allows you to configure the network interface for various protocols such as TCP/IP, MS Network, IPP, and SNMP. See “EpsonNet Config for Windows” on page 25.
- ❑ EpsonNet Config for Macintosh is a Macintosh-based configuration utility for administrators that allows you to configure the network interface for TCP/IP, AppleTalk, and IPP. See “EpsonNet Config for Windows” on page 25.
- ❑ EpsonNet Config with Web Browser is a Web-based configuration utility that allows you to configure the network interface for TCP/IP, MS Network, AppleTalk, IPP, and SNMP. See “EpsonNet Config with Web Browser” on page 27.

---

## **Terms and Concepts**

**Configuration**—a prepared set of conditions for proper operation of a device. Configuring the network interface is to prepare it to work with protocols available on a network.

**DHCP**—a dynamic host configuration protocol. It is a protocol that assigns dynamic IP addresses to devices on a network.

**EtherTalk**—the communication protocol of AppleTalk governing Ethernet transmissions.

**Protocol**—a rule that controls how data or information is exchanged through a network. Computers and software cannot communicate with each other using different protocols.

**TCP/IP**—Transmission Control Protocol/Internet Protocol, a layer of protocols that provides communication between nodes on a network.



---

# Setting Up Your System for Network Printing

---

## Overview

This section describes the general procedure on how to set up the network interface.

1. Check the network interface operation.

Check the functions and operations of the network interface, such as status lights and RJ-45 connector. See “Network Interface Operation” on page 7 for details.

2. Select a printing method.

Select a printing method appropriate for your network environment and operating system. If you are not sure, see “Printing from Windows” on page 10 or “Printing from Macintosh” on page 10 for details.

3. Install the necessary components on your computer.

Make sure the necessary components (such as TCP/IP) are installed on the computer, and network settings (such as IP address, subnet mask, etc.) of the computer is set.

4. Connect the network interface to the network.

Connect the network interface to the network. See “Connecting the Network Interface to the Network” on page 14 for details.

5. Configure the network interface and install the printer driver.

See “Configuring the Network Interface” on page 14 for details.

6. If necessary, configure the network settings of the network interface using EpsonNet Config.

Configure the network interface for TCP/IP, AppleTalk, MS Network, etc. using EpsonNet Config. For Windows users, see “EpsonNet Config for Windows” on page 25. For Macintosh users, see “EpsonNet Config for Macintosh” on page 26.

---

## **Selecting a Printing Method**

### **Printing from Windows**

Check if there is a Windows Vista or XP print server on your network, and then use the suggestions below.

**Note:**

*Only the recommended printing methods are introduced here.*

#### **If no Windows Vista or XP print server exists**

Use TCP/IP printing via LPR. See “Installing Network Components on Your Computer” on page 11.

#### **If a Windows Vista or XP print server exists**

On the server, set the printer to connect with LPR and turn it into a shared printer. Your clients can then print to this shared printer.

### **Printing from Macintosh**

- Bonjour
- Epson TCP/IP
- Epson AppleTalk

---

## Installing Network Components on Your Computer

Before configuring the network interface and printing from the computer, you need to install the necessary components (such as TCP/IP) and assign an IP address and subnet mask for your computer, depending on the printing method you want to use. See the section in this chapter appropriate for your operating system.

### Windows Vista

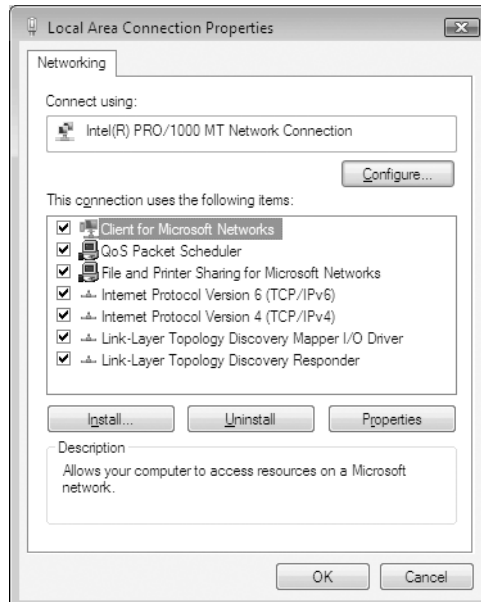
For Windows Vista, use the following procedure to install the necessary components.

1. Click Start, click Control Panel, and then click View network status and tasks or double-click Network and Sharing Center.
2. Click View Status, and then click the Properties button.

**Note:**

*If the User Account Control screen appears, click the Continue button.*

3. Check if the following necessary components are in the list.



The following table lists the components required for configuring the network interface with EpsonNet Config.

EpsonNet Config's setting screens	Necessary components
TCP/IP, IPP, SNMP (IP trap)	Internet Protocol (TCP/IP)
MS Network	Internet Protocol (TCP/IP)

4. If the necessary components are not in the list, click Install to install them.
5. For LPR or Internet printing:  
Double-click Internet Protocol Version 4 (TCP/IPv4) on the Local Area Connection Properties dialog box to open the Internet Protocols Version 4 (TCP/IPv4) Properties dialog box. Set the IP address, the subnet mask, etc. and then click OK.
6. Restart the computer.

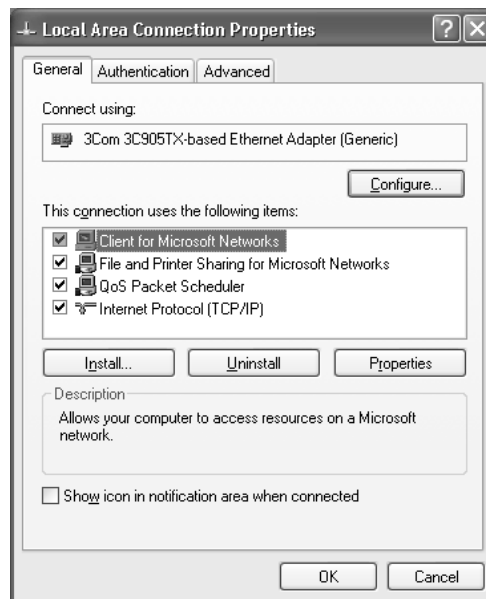
The necessary components are now installed. Go to the section “Connecting the Network Interface to the Network” on page 14.

## Windows XP

For Windows XP, use the following procedure to install the necessary components.

**Note:**

- The Windows XP CD-ROM may be required during the installation.*
  - When using TCP/IP or IPP for printing, you need to set the IP address, the subnet mask, and the default gateway of the computer.*
1. Click Start, highlight Control Panel, and then click Network and Internet Connections. Select Network Connections.
  2. Under LAN or High-Speed Internet, click the Local Area Connection icon.
  3. Under Network Tasks, click Change settings of this connection.
  4. Check if the following necessary components are in the list.



The following table lists the components required for configuring the network interface with EpsonNet Config.

EpsonNet Config's setting screens	Necessary components
TCP/IP, IPP, SNMP (IP trap)	Internet Protocol (TCP/IP)
MS Network	Internet Protocol (TCP/IP)

The following table lists the components required for network printing.

Printing method	Necessary components
LPR or Internet printing	Internet Protocol (TCP/IP)
Microsoft® Network Shared printing	TCP/IP or NetBEUI Client for Microsoft Networks

5. If the necessary components are not in the list, click **Install** to install them.

For LPR or Internet printing:

Internet Protocol (TCP/IP) is installed by default. You cannot add or delete it.

For Microsoft Network Shared printing:

Select **Client**, then click **Add**. Select **Client for Microsoft Networks** and then click **OK**.

6. For LPR, Internet, Microsoft Network Shared printing:  
Double-click **Internet Protocol (TCP/IP)** on the **Local Area Connection Properties** dialog box to open the **Internet Protocols (TCP/IP) Properties** dialog box. Set the IP address, the subnet mask, etc. and then click **OK**.
7. Restart the computer.

The necessary components are now installed. Go to the section "Connecting the Network Interface to the Network" on page 14.

## Macintosh

To assign an IP address, subnet mask, etc. to your Macintosh, follow the steps below.

1. From the Apple menu, select **System Preferences**.
2. Open the **Network** control panel. Click the **TCP/IP** tab.
3. Select **Built-in Ethernet** from the **Show** pull down menu.
4. Assign an IP address and other settings if necessary.
5. Click the **Apply Now** button to save any changes.

Go to the section "Connecting the Network Interface to the Network" on page 14.

---

## Setting Up the Network Interface

### Connecting the Network Interface to the Network

Follow the instructions below to connect the network interface to the network.

1. Make sure that your printer is turned off.
2. Connect one end of the network cable to the RJ-45 connector on the network interface, and the other end to the network.



**Caution:**

- You must use a Category 6 shielded twisted-pair cable to connect the network interface to prevent malfunction.
- Do not connect or disconnect the network cable when the printer is on.

**Note:**

You can use both 10Base-T and 100Base-TX. When you print a lot of data, we recommend you use a high-speed 100Base-TX network with light network traffic.

3. Turn on your printer.



**Caution:**

After turning off the printer, wait until the network interface status lights go off before turning it back on; otherwise the network interface may not work correctly.

**Note for Mac OS X:**

Since the printer supports Bonjour and is enabled by default, you can use the printer on a network just by connecting it to the network. If you want to disable the Bonjour setting, use the printer's control panel. See the next section for details.

Now, you can configure the network interface for use on a TCP/IP network and install the printer driver.

### Configuring the Network Interface

Configure the network interface for use on a TCP/IP network.

1. Make sure the printer is turned on, and the LCD displays `READY`.
2. Press the Menu ► button on the printer to enter the printer's menu system.
3. Press ▼ to highlight `NETWORK SETUP`, and then press ►.
4. Press ►, then ▼ to highlight `ENABLE`.
5. Press ↵ Enter. An asterisk appears next to `ENABLE` to show that it's selected.

6. Press ◀, then ▼ to highlight IP ADDRESS SETTING (or GET IP ADDRESS).
7. Press ▶, then press ▲ or ▼ to choose one of the following IP configuration settings:
  - ❑ Choose AUTO if your network uses a DHCP server to configure your network devices' IP settings automatically.
  - ❑ Choose PANEL if you would like to configure the printer's IP settings manually.
8. Press ↵ Enter. An asterisk appears next to the setting you selected.
9. Press ◀ to go back. Then do one of the following:
  - ❑ If you selected AUTO as the IP address setting, press the ■ Pause button to exit the printer menu. Then continue with step 14.
  - ❑ If you selected PANEL as the IP address setting, continue with step 10.
10. Press ▼ to highlight IP, SM, DG SETTING, (or IP), then press ▶. The LCD displays the IP address.
11. Press ▲ or ▼ to change each octet value, then press ▶ to select the next octet. When you have changed the value of the last octet, press ▶. The LCD displays the subnet mask.
 

If you don't see the subnet mask, press ▼, then press ▶.
12. Press ▲ or ▼ to change each octet value, then press ▶ to select the next octet. When you have changed the value of the last octet, press ▶. The LCD displays the default gateway.
 

If you don't see the default gateway (GW) press ▼, then press ▶.
13. Press ▲ or ▼ to change each octet value, then press ▶ to select the next octet. When you have changed the value of the last octet, press the ■ Pause button to exit the printer menu.
14. Turn the printer off then back on again.

See "Printing a Network Status Sheet" on page 16 to print a network status sheet and confirm the new IP address.

**Note:**

- ❑ You must first set the IP address before using EpsonNet with Web Browser.
- ❑ See the User's Guide for more information about settings on the printer's control panel.

Now you can use the printer on the TCP/IP network.

## Printing a Network Status Sheet

1. Make sure that the printer is not printing and the LCD displays **READY**.
2. Press the Menu ► button on the printer's control panel to enter the printer's menu system.
3. Press ▼ to highlight **TEST PRINT**, and then press ►.
4. Press ▼ to highlight **NETWORK STATUS SHEET** or **NETWORK**, then press ►.
5. Press ↵ Enter to print the Network Status sheet.

---

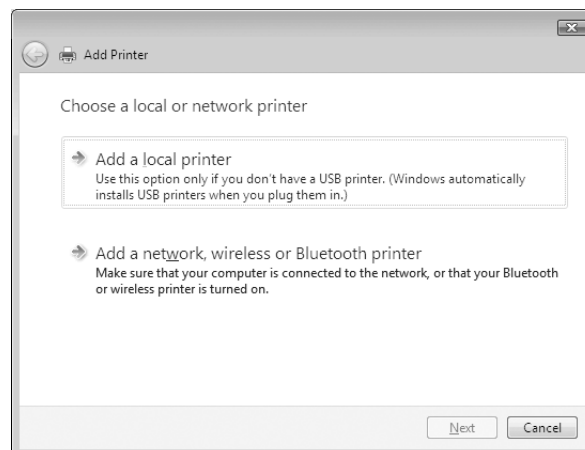
## Installing the Printer Driver

To print to the network printer, you need to install the printer driver on each computer that will print over the network. See the section appropriate for your operating system.

### Windows Vista

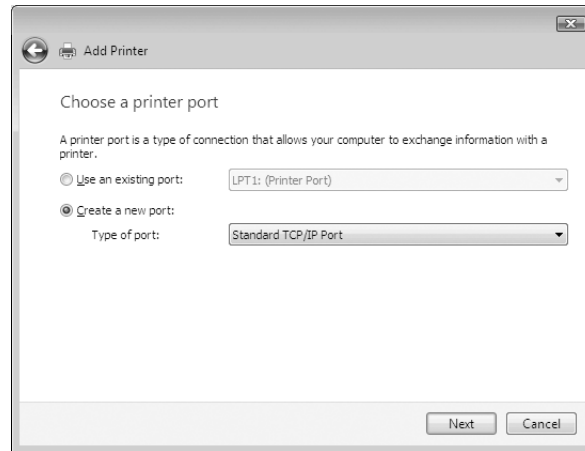
#### Adding the network port

1. Click Start, Control Panel, and then Printer.
2. Click Add a printer to start the Add Printer wizard.
3. Click Add a local printer.

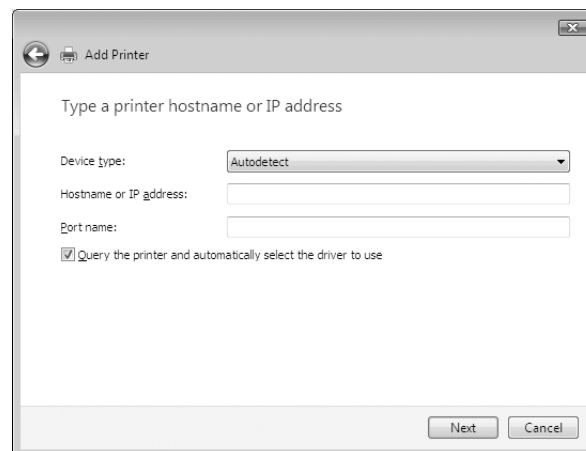




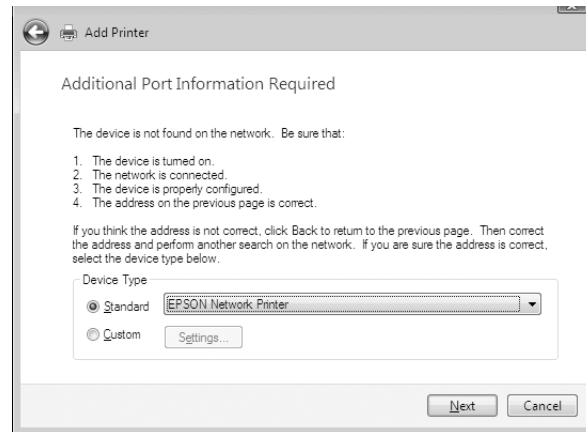
4. Select the Create a new port radio button, and then select Standard TCP/IP Port from the list. Then click Next.



5. Enter the IP address of the network interface and then click Next.



6. If an error occurs, the following dialog box appears. Select the Standard radio button and then select EPSON Network Printer. Click Next.



7. Click Finish.

### ***Installing the printer driver***

1. Insert the printer software CD-ROM in your CD-ROM or DVD drive.
2. Follow the on-screen instructions to install the printer driver.
3. When you see a screen like this one, click the Manual button.

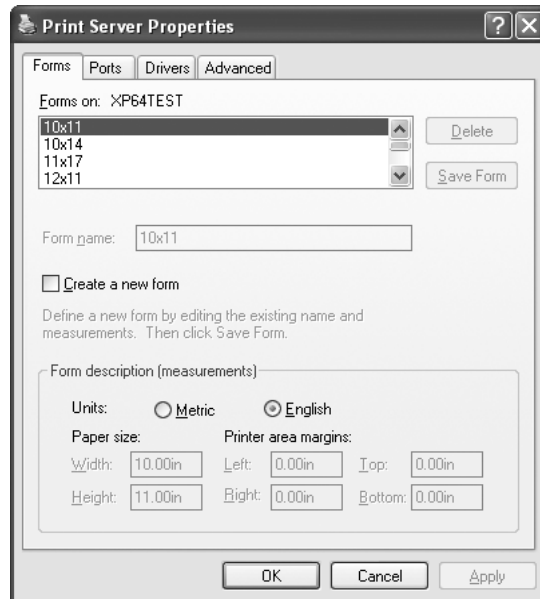


4. Select the port you created for the printer, then click OK.
5. Follow the instructions to finish installing the printer driver.

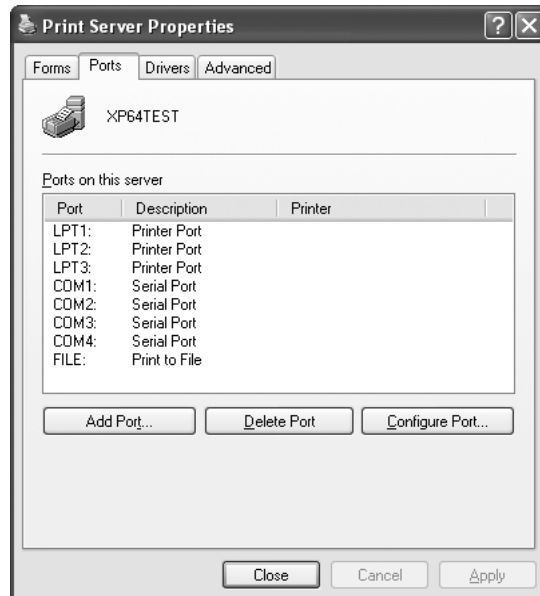
## Windows XP

### Adding the network port

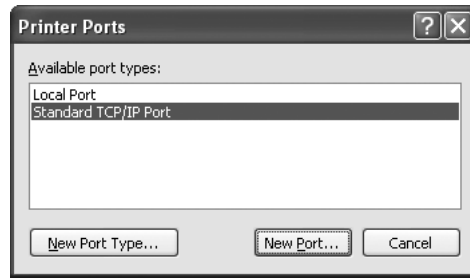
1. Click Start, click Control Panel, click Printers and Other Hardware, and then click Printers and Faxes.
2. From the File menu, select Server Properties. You see a window like this one.



3. Click the Ports tab, then click Add Port.



4. Select Standard TCP/IP Port, then click the New Port button.



5. Click Next.



6. Do one of the following:
- ❑ If you are using DHCP to assign an IP address to the printer, enter the printer's Host Name or IP address, shown on the network status sheet, in the Printer Name or IP Address text box. Then click Next.
  - ❑ If you manually assigned an IP address to the printer using the control panel or arp/ping method, enter the printer's IP address, shown on the network status sheet, in the Printer Name or IP Address text box. Then click Next.

The screenshot shows the 'Add Standard TCP/IP Printer Port Wizard' dialog box. The title bar reads 'Add Standard TCP/IP Printer Port Wizard'. The main heading is 'Add Port' with the subtext 'For which device do you want to add a port?'. Below this, it says 'Enter the Printer Name or IP address, and a port name for the desired device.' There are two text input fields: 'Printer Name or IP Address:' containing 'EPCDC36A' and 'Port Name:' containing 'EPCDC36A'. At the bottom, there are three buttons: '< Back', 'Next >', and 'Cancel'.

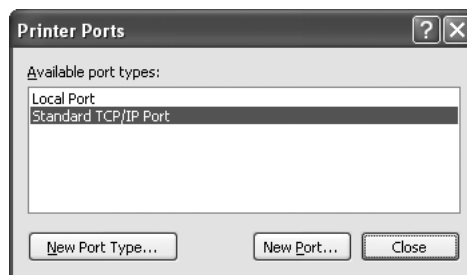
7. Make sure that the Standard and Generic Network Card are selected, and then click Next.

The screenshot shows the 'Add Standard TCP/IP Printer Port Wizard' dialog box. The title bar reads 'Add Standard TCP/IP Printer Port Wizard'. The main heading is 'Additional Port Information Required' with the subtext 'The device could not be identified.' Below this, it says 'The device is not found on the network. Be sure that:' followed by a numbered list: 1. The device is turned on. 2. The network is connected. 3. The device is properly configured. 4. The address on the previous page is correct. Below the list, it says 'If you think the address is not correct, click Back to return to the previous page. Then correct the address and perform another search on the network. If you are sure the address is correct, select the device type below.' There are two radio buttons: 'Standard' (selected) and 'Custom'. The 'Standard' radio button is selected, and a dropdown menu next to it shows 'Generic Network Card'. There is a 'Settings...' button next to the 'Custom' radio button. At the bottom, there are three buttons: '< Back', 'Next >', and 'Cancel'.

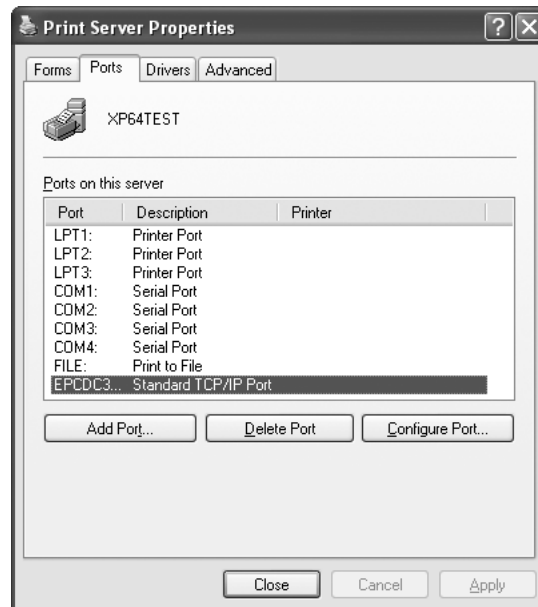
8. Make sure that the Device matches the Host Name or IP address shown on the network status sheet, then click Finish.



9. Click the Close button to return to the Server Properties window.



10. Click the Close button to return to the Printers and Faxes window.



### ***Installing the printer driver***

1. Insert the printer software CD-ROM in your CD-ROM or DVD drive.
2. Follow the on-screen instructions to install the printer driver.
3. When you see a screen like this one, click the Manual button.



4. Select the port you created for the printer, then click OK.
5. Follow the instructions to finish installing the printer driver.

## **Macintosh**

1. Insert the printer software CD-ROM in your CD-ROM or DVD drive.
2. Follow the on-screen instructions to install the printer driver.

**Note:**

*Make sure that the printer driver is installed on your Macintosh before following the steps below. See the manual shipped with your printer for instruction on how to install the printer driver.*

### **Bonjour printing**

1. Open the Applications folder.
2. Open the Utilities folder.
3. Open Printer Setup Utility, and then click Add.
4. Select the printer model that is connected with Bonjour.

**Note:**

*If your printer is not displayed with Bonjour, click More Printers, select Bonjour from the drop-down list, and then select the printer model.*

5. Click Add.

### **TCP/IP printing**

1. Open the Applications folder.
2. Open the Utilities folder.
3. Open Printer Setup Utility, and then click Add.
4. Select the printer model that is connected with TCP/IP.

**Note:**

*If your printer is not displayed with TCP/IP, click More Printers, select EPSON TCP/IP from the drop-down list, and then select the printer model.*

5. Click Add.



## Chapter 3

# Network Software

This chapter explains how to use the network software provided with your printer.

## EpsonNet Config for Windows

### About EpsonNet Config

EpsonNet Config is a Windows-based configuration software for administrators to configure the network interface for TCP/IP, NetWare, MS Network, AppleTalk, IPP, and SNMP.

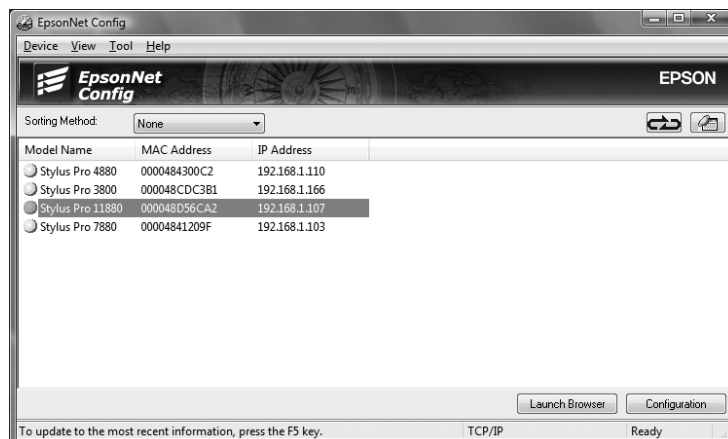
**Note:**

- ❑ Be sure to use EpsonNet Config included on the printer software CD-ROM shipped with this product.
- ❑ EpsonNet Config installed on Windows Vista does not support NetBEUI and IPX as a search protocol.
- ❑ EpsonNet Config installed on Windows XP does not support NetBEUI as a search protocol because officially the NetBEUI protocol is not supported on Windows XP.

### Accessing the EpsonNet Config User's Guide

The EpsonNet Config *User's Guide* contains detailed information on EpsonNet Config. Follow the steps below to access the EpsonNet Config *User's Guide*.

1. Click Start, point to Programs or All Programs, select EpsonNet, and then select EpsonNet Config. Click EpsonNet Config to start it.



2. From the Help menu, select EpsonNet Config Help.

The EpsonNet Config *User's Guide* appears. By clicking the links on the left side of the screen, you can get information on using EpsonNet Config.

---

## EpsonNet Config for Macintosh

### About EpsonNet Config

EpsonNet Config for Macintosh is a Macintosh-based configuration software for administrators that allows you to configure the network interface for TCP/IP, AppleTalk, and IPP.

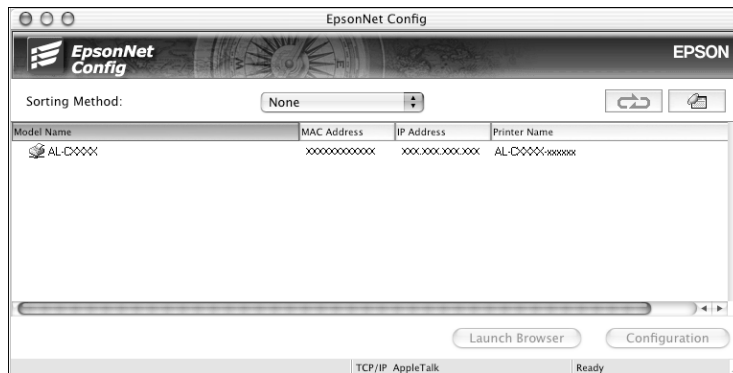
**Note:**

Be sure to use EpsonNet Config included on the printer software CD-ROM shipped with this product.

### Accessing the EpsonNet Config User's Guide

The EpsonNet Config *User's Guide* contains detailed information on EpsonNet Config. Follow the steps below to access the EpsonNet Config *User's Guide*.

1. Double-click the Macintosh HD icon. In the Applications folder, double-click the EpsonNet folder, and then double-click the EpsonNet Config folder. Finally, double-click the EpsonNet Config icon.



2. From the Help menu, select EpsonNet Config Help.

The EpsonNet Config *User's Guide* appears. By clicking the links on the left side of the screen, you can get information on using EpsonNet Config.

---

## ***EpsonNet Config with Web Browser***

### ***About EpsonNet Config with Web Browser***

EpsonNet Config with Web Browser is a Web-based utility designed to configure the printer for use on a network.

By typing the IP address of the network interface for the URL in your browser, you can start EpsonNet Config to allow you to configure the network interface for TCP/IP, MS Network, AppleTalk, IPP, and SNMP.

### ***Supported Web browsers***

#### *Windows:*

- Microsoft Internet Explorer version 4.01 or later
- Netscape™ Navigator™ version 4.05 or later

#### *Mac OS X:*

- Microsoft Internet Explorer version 4.01 or later
- Netscape Navigator version 7.0 or later
- Safari™

### ***About Web browser settings***

When running EpsonNet Config with Web Browser, be sure not to use a proxy server to access the Internet. If the Access the Internet using a proxy server checkbox is selected, you cannot use EpsonNet Config with Web Browser. Use the following steps to clear the Access the Internet using a proxy server checkbox.

1. Right-click the Internet Explorer icon on the desktop, and then select Properties.
2. Click the Connection tab.
3. Clear the Access the Internet using a proxy server checkbox.

## Configuring the Network Interface Using EpsonNet Config with Web Browser

After you have assigned an IP address to the network interface using the printer's Control panel, EpsonNet Config for Windows or Macintosh, a DHCP server, or the arp/ping command, you can configure the network interface using EpsonNet Config with Web Browser.

**Note:**

- ❑ A Web browser must be installed on your computer.
- ❑ TCP/IP must be correctly set for the computer and the network interface.

Follow the steps below to change the IP address using EpsonNet Config.

1. Turn on your printer.
2. Run EpsonNet Config in one of the following ways.
  - ❑ Run EpsonNet Config for Windows or Macintosh. Select the printer you want to configure from the list and then click Launch Browser.
  - ❑ Open your browser, and then type in the IP address of the network interface directly. Do not run EpsonNet Config for Windows or Macintosh.

http://IP address of network interface/

Example: http://192.168.100.201/

**Note:**

To check the IP address of the network interface, use EpsonNet Config. For details, see "EpsonNet Config for Windows" on page 25 or "EpsonNet Config for Macintosh" on page 26.

3. Click TCP/IP under Network on the Configuration menu to display the TCP/IP setting screen.
4. Select a method for acquiring the IP address. When you select Auto, DHCP becomes available and assigns an IP address automatically. If you want to set the IP address manually, select Manual.

**Note:**

- ❑ The network administrator must check any changes made to the IP address settings.
- ❑ When Auto is selected, DHCP becomes available. To use the DHCP server, make sure it is installed on your computer and correctly configured. See your operating system's online help for detailed instructions.
- ❑ If Set Using Automatic Private IP Addressing (APIPA) is enabled, a private IP address is automatically assigned to the network interface even when there are no DHCP servers on your system or your network.

- ❑ *If the Dynamic DNS function is not supported, we recommend that you select Manual and then enter an IP address. This is because if you select Auto, the IP address of the network interface changes every time you turn on the printer so that you need to change the printer port setting accordingly.*

5. To assign an IP address manually, enter the IP address, the subnet mask, and the default gateway. Be sure the IP address does not conflict with any other devices on the network.

**Note:**

*If there is a server or a router functioning as a gateway, enter the IP address of the server or the router for the gateway address. If there is no gateway, leave the default values there.*

6. If you want to get a private address between 169.254.1.1 and 169.254.254.254 automatically when an IP address cannot be obtained by the DHCP server, leave it at Enable for Set Using Automatic Private IP Addressing (APIPA); otherwise, select Disable.
7. When setting an IP address using the ping command, select Enable for Set Using PING. Select Disable when setting an IP address with EpsonNet Config; this prevents any unexpected change of the IP address.
8. Select Enable for Acquire DNS Server Address Automatically if you want to acquire the DNS server address using the DHCP server.

If you want to enter the DNS server address manually, select Disable and then enter the IP address of the DNS server.

9. Select Enable for Acquire Host Name and Domain Name Automatically if you want to acquire the host name and the domain name using the DHCP server.

If you want to specify manually, enter the host name and the domain name in the text boxes.

10. Select Enable for Register Network Interface Address to DNS Server if you want to register the host name and domain name to the DNS server through the DHCP server that supports Dynamic DNS.

If you want to register the host name and the domain name directly to the DNS server, select Enable for Register Network Interface Address Directly to DNS Server.

11. Select Enable or Disable for Use Universal Plug and Play. Select Enable if you want to use the Universal Plug and Play function.
12. Change the default Universal Plug and Play device name, if desired. This device name is used for Windows systems that support the Universal Plug and Play function.
13. Mac OS X only:  
Select Enable or Disable for Use Bonjour. If you select Enable, enter the Bonjour Name and the Bonjour Printer Name. If your network environment supports DHCP, you can use the printer on the network just by enabling this setting.

14. Click Submit and then enter the password to update the settings. See “Password” on page 37 for more information on setting the password.

**Note:**

*If you have set the Administrator Name on the Administrator screen, enter the administrator name for the user name.*

15. If the message “Configuration change is complete!” appears on your screen, the update is complete. Do not exit the Web browser and do not send a job to the printer until this message appears. Follow the on-screen instructions to reset the printer.

**Note:**

*Since the new IP address becomes available after the printer is reset, you need to restart EpsonNet Config by entering the new IP address.*

*Only changes on the page where you press the Submit button take effect.*

## Opening Screen

Any user can access the main screen by typing the IP address of the network interface for the URL in your browser.

### Top Menu Bar

Home	Links to the opening screen.
Favorite	Links to a Web site previously defined by the administrator.
Help	Links to Help.
About	Links to the copyright and version information for EpsonNet Config.
Epson Logo	Links to the Epson Web site ( <a href="http://www.epson.com">http://www.epson.com</a> ).

### Menu

Information - Network	
General	Displays the network interface information.
Ethernet	Displays information about Ethernet.
TCP/IP	Displays information about TCP/IP.
AppleTalk	Displays information about AppleTalk.
MS Network	Displays information about Microsoft Network.
IPP	Displays information about IPP.
SNMP	Displays information about SNMP.
Printing Control	Displays information about Printing Control.
Timeout	Displays information about Timeout.
Time	Displays information about Time.

<b>Configuration - Network</b>	
Ethernet	Configure the applicable settings for Ethernet.
TCP/IP	Configure the desired settings/method for TCP/IP.
AppleTalk	Configure the desired settings for AppleTalk.
MS Network	Configure the desired settings for Microsoft Network.
IPP	Configure the desired settings for IPP.
SNMP	Configure the desired settings for SNMP.
Printing Control	Configure the desired settings for Printing Control.
Timeout	Configure the desired settings for Timeout.
Time	Configure the desired settings for Time.
<b>Configuration - Optional</b>	
Administrator	Type the name of the administrator and a link to a favorite Web site.
Reset	Resets the printer and returns to the default settings.
Password	Set the password to protect settings.

## **Information - Network Screens**

### **General information**

<b>Items</b>	<b>Descriptions</b>
Administrator Name	Administrator name of the printer
Location	Location of the printer
Interface Card Model Name	Model of the network interface
MAC Address	Unique hardware address of the network interface. You can distinguish the network interface by its MAC address.
Hardware Version	Hardware version of the network interface
Software Version	Software version of the network interface
Model Name	Product name of the printer attached to the network interface
Network Status	Displays the current Ethernet speed and duplex setting.
Port Type	Displays the port type setting, either Auto, MDI, or MDI-X
Printer Status	The background color of the text box indicates the printer's status. Green indicates that the printer is idle or printing. Yellow indicates that either the paper or ink is low. Red indicates that either the paper or ink is completely out, the printer is offline, there is a paper jam, the cover is open, or an error has occurred.
Current Time	Displays the current time.
Refresh button	Refreshes the printer status. The printer status is not updated automatically. Press Refresh to display the latest printer information.

## Configuration - Network Screens

### Ethernet

#### Ethernet Settings

Items	Descriptions
Ethernet Speed/Duplex	Select the appropriate Ethernet speed and duplex setting. Normally, Auto can be selected. If you select a setting other than Auto, make sure the setting matches the type of hub or switch you are using.
Port Type	Select the port type: Auto MDI MDI-X  Normally, Auto can be selected. If you are connecting the printer directly to a PC with a straight-through cable, select MDI-X. If you are connecting the printer to a hub or switch, select MDI.

### TCP/IP

#### IP Address Settings

Items	Descriptions
Method for Acquiring the IP Address	Select a method for acquiring IP addresses. If Auto is selected, DHCP becomes available. To use the DHCP server, make sure it is installed on your computer and correctly configured. See your operating system's online help for detailed instructions.  To set the IP address manually, select Manual.
IP Address	Enter an IP address for the network interface. Be sure the IP address does not conflict with any other devices on the network.
Subnet Mask	Set the subnet mask.
Default Gateway	Set the gateway address if needed.
Set Using Automatic Private IP Addressing (APIPA)	Select Enable to get a private address between 169.254.1.1 and 169.254.254.254 automatically when an IP address cannot be obtained by the DHCP server; otherwise, select Disable.
Set Using PING	Enables or disables IP address setting using the ping command.

#### DNS Server Address Settings

Items	Descriptions
Acquire DNS Server Address Automatically	Select either Enable or Disable to acquire the DNS server address from the DHCP server.
DNS Server Address	Enter the DNS server address. When the DHCP server does not respond even when Enable is selected for Acquire DNS server address automatically, the DNS server address set here is used.



### *Host Name and Domain Name Settings*

<b>Items</b>	<b>Descriptions</b>
Acquire Host Name and Domain Name Automatically	Select either Enable or Disable to acquire the host name and domain name from the DHCP server.
Host Name	Enter the host name supported by Dynamic DNS (between 2 and 63 characters). The total number of characters of the host name and the domain name must not exceed 251.
Domain Name	Leave it blank or enter two or more characters of the domain name. The total number of characters of the host name and the domain name must not exceed 251.
Register Network Interface Address to DNS Server	Select Enable if you want to send the host name and the domain name to the DHCP server that supports Dynamic DNS update to request for DNS dynamic updates.
Register Network Interface Address Directly to DNS Server	Select Enable if you want to directly send the host name and the domain name to the DNS server that supports Dynamic DNS update to request for DNS dynamic updates. When Register the network interface's address to DNS server is Disable, then this setting is the same as Disable.

### *Universal Plug and Play Settings*

<b>Items</b>	<b>Descriptions</b>
Use Universal Plug and Play	Enables or disables Universal Plug and Play.
Device Name	Enter the device name (between 2 and 63 characters).

### *Bonjour Settings*

<b>Items</b>	<b>Descriptions</b>
Use Bonjour	Select either Enable or Disable to use Bonjour.
Bonjour Name	Enter the Bonjour name.
Bonjour Printer Name	Enter the printer name for Bonjour.

## AppleTalk

Items	Descriptions
Use AppleTalk	Enable or Disable AppleTalk.
Printer Name	Enter the name of the printer attached to the network interface (up to 32 characters).
Zone Name	Enter the network zone name (up to 32 characters). To have the zone selected automatically, select Auto for the Network Number Set and enter an asterisk (*) in this text box.
Entity Type	Displays the printer's entity type. Do not change the entity type unless "epson" appears. If "epson" appears, enter an entity type to match your printer.
Network Number Set	Select Auto or Manual. Usually Auto is recommended.
Network Number for Manual Mode	Enter the network number when you select to set the Network Number manually.

## MS Network

Items	Descriptions
Use Microsoft Network Shared Printing	Enable or Disable Microsoft network.
Print Server Name	Enter the print server name, which is the name of a computer on the network (up to 15 characters). Be sure to give a name that is unique on the network.
Workgroup Name	Enter the workgroup name or domain name (up to 15 characters).
Share Name	Enter the printer's shared name (up to 12 characters). LPT1, LPT2, or LPT3, or COM cannot be used.

## IPP

You must make the following settings before setting up the printer for Internet Printing in Windows.

Items	Descriptions
IPP URL	Displays the printer's URL for Internet Printing. Format: http://IP address of printer:631/printer name set below Example: http://192.168.100.201:631/EPSON_IPP_Printer
Printer Name	Enter the name of a printer to use for Internet Printing (up to 127 characters). Example: EPSON_IPP_Printer
Location	Enter the name of the printer's physical location (up to 64 characters).

## SNMP

### Community

Items	Descriptions
Community	Displays the community name.
Read Only	The word "public" always appears.
Read/Write	Enter the Read/Write community name (up to 32 characters).

### IP Trap

Items	Descriptions
Trap	Enable or Disable trap.
Address	Enter the IP address of the server to which the trap is transmitted.
Community	Enter the community name (up to 32 characters).
Port Number	Enter the Port Number of the receive host, in decimal (0-65535).

### IPX Trap

Items	Descriptions
Trap	Enable or Disable trap.
Address	Enter Network Address and Node Number (MAC Address) of the server to which the trap is transmitted.  Format: Network Address: Node Number  Suppose Network Address is A7E00BB0 (hexadecimal) and Node Number is 000048930000 (hexadecimal). In this case, the address is A7E00BB0:000048930000.
Community	Enter the community name (up to 32 characters).
Socket Number	Enter the Socket Number of the receive host, in hexadecimal (0-FFFF).

### Printing Control

Items	Descriptions
Printing Control	Enable or Disable printing control.
Printer Access Control	Select Allow or Deny. Selecting Allow permits the network access from the IP addresses registered on the printer access control list. On the other hand, selecting Deny blocks the network access from the IP addresses registered on the printer access control list.
Printer Access Control List	Enter the IP address ranges by which the network access is restricted.

## Timeout

### Printing

Items	Descriptions
Change Timeout Value	Select this checkbox when you set the values before a timeout occurs.
LPR	Set the length of time for LPR before a timeout occurs (between 0 and 3600 seconds). Enter 0 not to apply the timeout.
RAW (Port9100)	Set the length of time for RAW (Port9100) before a timeout occurs (between 0 and 3600 seconds). Enter 0 not to apply the timeout.
IPP	Set the length of time for IPP before a timeout occurs (between 0 and 3600 seconds). Enter 0 not to apply the timeout.

### Time

Items	Descriptions
Time	Displays the time. Click the Get Time button to reload the display. When Time Server is Enable, time is acquired from the time server.

### Manual Settings

If the network interface has RTC (Real Time Clock), you can set the time manually.

Items	Descriptions
Date	Enter the year, month, and day.
Time	Enter the hour, minutes, and seconds.
Time Difference	Enter the difference between time at the present location and Greenwich Mean Time (GMT).
Apply button	Applies the settings.

### Time Server Settings

Items	Descriptions
Time Server	Select either Enable or Disable to time synchronize from the time server.
Time Server Address	Enter the address of the time server.
Synchronize Interval	Enter the time interval in minutes for automatic time synchronization.
Time Difference	Enter the difference between time at the present location and Greenwich Mean Time (GMT).
Time Server Status	Displays a connection status with the time server.
Apply button	Applies the settings.

## EDM

Items	Descriptions
EDM	Displays EDM information.

## Optional Screens

### Administrator

You can link to the Web site specified on this screen when you click Favorite (the name is changeable) in Index.

Items	Descriptions
Administrator Name	Enter the name of the administrator (up to 255 characters).
Location	Enter the location of the network interface (up to 255 characters).
Favorite Name	Enter the link item name (up to 20 characters) which will be displayed in the Index menu.
Favorite URL	Enter a URL (up to 64 characters).
Description	Enter any comments concerning the URL above (up to 64 characters).

**Note:**

*Links to ftp are not supported.*

### Reset

You can reset the network interface or return the settings to the default values.

Items	Descriptions
Reset button	Functions like turning the power off and on again. Click this button to make the changes take effect.
Return to Default button	Returns the network interface to the default settings.

### Password

The password set here protects the settings. You will be asked for the password when you update or change the settings on each setting screen. Passwords are case sensitive. No password is set by default.

Items	Descriptions
Old Password	Input the old password.
New Password	Input the new password (up to 20 characters).
New Password (again)	Re-input the new password.

**Note:**

- ❑ *The same password is used for EpsonNet Config for Windows and Macintosh, and EpsonNet Config with Web Browser.*
- ❑ *If you forget your password, you need to initialize the network interface.*

## Chapter 4

# Troubleshooting

## General Problems

### **Cannot configure the network interface or cannot print from the network.**

Cause	What to do
The printer settings or network settings may be wrong.	First, check to see if you can print a status sheet, as described in "Printing a Network Status Sheet" on page 16. If you can print a status sheet, check the network settings.

### **Cannot print even if you have assigned the IP address to the computer and the printer.**

Cause	What to do
You have assigned an IP address to the computer manually, but you assigned the IP address to the printer by Automatic Private IP Addressing (APIPA).	Assign the printer's IP address so that it belongs to the same segment of the computer. Use EpsonNet Config and the printer's control panel.

### **Unable to start EpsonNet Config.**

Cause	What to do
You have added or deleted protocols after installing EpsonNet Config.	Uninstall EpsonNet Config and then reinstall it. See "Uninstalling Software" on page 43.

### **The message "EpsonNet Config cannot be used because no network is installed" appears when you start EpsonNet Config.**

Cause	What to do
TCP/IP is not installed on the computer.	Install the TCP/IP protocol.
TCP/IP is installed on the computer, but its IP address is not set correctly.	Set a correct IP address for the computer.

***The message “Could not complete communicating configuration data” appears when you send settings to the network interface.***

Cause	What to do
This may happen when using a dial-up router.	Run Command Prompt from the computer on which EpsonNet Config is installed, and then enter the following command:  Format: >ROUTE_ADD_the IP address of the network interface_ the IP address of the computer (the under bar represents one space)  Example: >ROUTE ADD 192.168.192.168 22.33.44.55.

***Unable to start EpsonNet Config with Web Browser.***

Cause	What to do
You have not set an IP address for the network interface.	Set an IP address for the network interface using EpsonNet Config for Windows or Macintosh, the printer’s control panel, or the arp/ping commands. You can check the IP address on a status sheet. See the EpsonNet Config <i>User’s Guide</i> .

***Unable to set the IP address using the arp/ping commands.***

Cause	What to do
The network interface is not connected to the network.	Connect the network interface to the network, and check the network environment.
The printer is located beyond the router.	The printer and the computer must be in the same segment.

***The Model Name and IP Address do not appear in the EpsonNet Config dialog box.***

Cause	What to do
If the valid IP address is not set, the items indicated in the dialog box mentioned above may not appear.	Set a valid IP address.  Refresh the status by selecting Refresh from the View menu.  Increase the length of time before a timeout. To do this, select Options from the Tool menu, and then select Timeout. Note that doing so can cause EpsonNet Config to run more slowly.



#### Network Setup Menu

---

These items are used to make network settings on the printer's control panel.

Item	Settings (default in bold)
NETWORK SETUP	Disable, Enable
IP ADDRESS SETTING*	Auto, Panel
IP*	0.0.0.0 to 255.255.255.255
SM*	0.0.0.0 to 255.255.255.255
DG or GW*	0.0.0.0 to 255.255.255.255
Bonjour*	On, Off
INIT NETWORK SETTING*	EXECUTE

\* Available only when `Enable` is selected for `NETWORK SETUP`.

---

#### Setting an IP Address Using the arp/ping Command

Follow the steps below to set the IP address using the arp/ping command.

**Note:**

- Make sure that the Set using PING function is enabled on the TCP/IP menu in EpsonNet Config. If this function is disabled, you cannot set the IP address using the arp/ping command.
- Make sure the network interface and the computer are in the same segment.

Before you start, you need the following information:

- A valid IP address for the network interface. Ask your network administrator for an IP address which does not cause conflicts with any other device on the network. If you are the network administrator, choose an address within your subnet which does not conflict with any other device.
- The MAC (Ethernet hardware) address of the network interface. You can find out the MAC address on a status sheet.

## Checking the LAN

First, you need to check that the computer can reach to other computers in the same segment, as follows:

1. Set the default gateway to the host on which you are setting up the network interface.

If there is a server or a router which acts as a gateway, enter the address of the server or the router. If there is no gateway, enter the IP address of your computer as a gateway address.

2. Assume that you want to reach to the computer having the IP address "192.168.100.101". Check that the computer is reachable by "pinging" it from the command line:  
`ping 192.168.100.101`
3. If the computer is reachable, you can see the following result (the exact form of the message depends on your operating system, and the time may vary):  
64 bytes from 192:168:100:101:icmp\_seq=0. Time=34.ms
4. If the computer is unreachable, you may see something like this:  
PING 192:168:100:101:56 data bytes

If you press Ctrl-C, you may see something like this:  
192:168:100:101 PING Statistics  
3 packets transmitted, 0 packets received,  
100% packet loss

Again, the exact wording of the message you see may differ from this, depending on your operating system. If you cannot "ping" the computer, check the following:

- The address in the ping command is correct.
- The Ethernet connection to the computer has been made correctly, and all hubs, routers, etc. are switched on.

## Setting and checking the new IP address

To set the new IP address of the network interface which you have obtained from your network administrator, use the ping command and arp command with the -s flag (create an ARP entry).

### **Note:**

*In the following procedure, we assume that the MAC address of your network interface is 00:00:48:93:00:00 (hexadecimal), and that the IP address which you will be assigning is 192.168.100.201 (decimal). Substitute your values for these addresses when you type in the commands.*

1. From the command line, type:  
Example: `arp -s 192.168.100.201 00-00-48-93-00-00`
2. Execute the ping command to set the IP address by pinging it: Example:  
`ping 192.168.100.201`
3. The network interface should now respond to the ping. If it does not, you may have incorrectly typed the MAC address or the IP address in the `arp -s` command. Double-check and try again. If none of these actions are effective, re-initialize the network interface and try again.
4. Print a status sheet to check whether the new IP address has been assigned to the network interface.

**Note:**

*When the IP address is set by the ping command, the subnet mask is automatically changed by the class of the IP address. To change the subnet mask and the default gateway according to your network environment, use EpsonNet Config for Windows or Macintosh.*

---

## **Uninstalling Software**

Follow the steps below to uninstall the network software.

### **Windows Vista**

1. Click Start, click Control Panel, and then click Uninstall a program.
2. Select the utility you want to uninstall, and then click the Uninstall/Change button.
3. Follow the on-screen instructions to complete uninstallation.

### **Windows XP**

1. Click Start, click Control Panel, and then click Add or Remove Programs.
2. Click the Change or Remove Programs icon.
3. Select the utility you want to uninstall, and then click the Change/Remove button.
4. Follow the on-screen instructions to complete uninstallation.

## **Macintosh**

1. Double-click the EpsonNet Config Installer icon.
2. Click the Continue button.
3. In the License dialog box, read the License Agreement, and then click the Accept button.
4. Select Uninstall from the pull down menu.
5. Click the Uninstall button.
6. Follow the on-screen instructions to complete uninstallation.

**Note:**

*You can also uninstall the software by dragging the target folder to the Trash.*

---

# Index

## A

Administrator tips, 41 to 44  
arp, 42  
Automatic Private IP Addressing (APIPA), 29

## B

Bonjour printing, 24

## C

Cable, network, 7  
Configuring network interface  
  control panel, 14 to 15  
  EpsonNet Config with Web Browser, 28 to 30  
Connector, network, 7  
Control panel, configuring network interface,  
  14 to 15

## D

Default gateway, 15, 29  
DHCP, 8  
Dynamic DNS, 29

## E

EDM setting, 37  
EpsonNet Config  
  Macintosh, 26  
  Windows, 25  
EpsonNet Config with Web Browser  
  password, 37  
  settings, 30 to 38  
  using, 27 to 30

## I

Installing printer driver  
  Macintosh, 24  
  Windows Vista, 16 to 18  
  Windows XP, 19 to 23  
IP address  
  arp/ping command, 41 to 43  
  control panel, 14 to 15  
  EpsonNet Config with Web Browser, 28 to 29

## L

LAN, checking, 42  
Lights, status, 7

## M

MAC address, 31  
Macintosh  
  Bonjour printing, 24  
  installing printer driver, 24  
  network settings, 13  
  selecting a printing method, 10  
  TCP/IP printing, 24  
Microsoft network, 34

## N

Network  
  cable, 7  
  connector, 7  
  printing status sheet, 16  
  protocols, 6  
Network interface  
  configuring, 14 to 15  
  connecting to network, 14  
Network software, uninstalling, 43

## O

Operating environment, 6

## P

Password, EpsonNet Config with Web Browser, 37  
ping, 42  
Printer driver  
  installing in Windows Vista, 16 to 18  
  installing in Windows XP, 19 to 23  
  installing on Macintosh, 24  
Problems, solving, 39 to 40  
Protocols, 6

## R

Resetting network interface, 31, 37  
Return to default button, 37  
RJ-45 connector, 7  
Router, 29

## S

Software, uninstalling, 43  
Status lights, 7  
Status sheet, printing, 16  
Subnet mask, 15, 29

## **T**

### TCP/IP

- definition, 8

- setting up in Windows, 11 to 13

- setting up on Macintosh, 24

Troubleshooting, 39 to 40

## **U**

Uninstalling network software, 43

Universal Plug and Play, 29

## **W**

### Windows

- selecting a printing method, 10

- Vista, 11 to 12, 16 to 18

- XP, 12 to 13, 19 to 23