

EPSON PRODUCT SUPPORT BULLETIN

Date:	11/8/04	Originator:	RB, CH, JD, SA
PSB #:	PSB.2004.03.001C	Authorization:	<i>[Signature]</i>
Reference:	PSB.2004.03.001A	Total Pages:	19
Product(s):	EPSON Stylus Color 3000, Stylus Pro 4000, 5000, 5500, 7000 Series, 7600 Series, 9000 Series, 9600 Series, 10000 Series, and 10600 Series		
Subject:	Maximum Printable Area Limits for the EPSON Professional Graphic Printer line.		

This bulletin was created to inform you of the maximum custom page sizes allowable for EPSON Professional Graphic products. The tables below show the maximum page sizes allowable for the EPSON Professional Graphics printer line (Desktop and Large Format). Although this document is meant as a guideline for the maximum page size allowable for each printer, it does not include printable area (margin) information. Please refer to your user guide for additional information regarding the printable area (margins) for your particular printer. There are 3 aspects that effect how long of a page your printer can output. Those 3 items are:

1. Operating System.
2. Driver Specification.
3. Software application(s) being used.

Maximum custom page size allowable per operating system (for Epson standard driver):

	Stylus Color 3000	Stylus Pro 4000	Stylus Pro 5000	Stylus Pro 5500	Stylus Pro 7000	Stylus Pro 7500	Stylus Pro 7600	Stylus Pro 9000	Stylus Pro 9500	Stylus Pro 9600	Stylus Pro 10000 Series
Macintosh OS	44 in.	44 in.	44 in.	44 in.	90.5 in.	90.5 in.	90.5 in.	90.5 in.	90.5 in.	90.5 in.	90.5 in.
Macintosh OS X*	44 in.	44 in.	N/A	44 in.	N/A	N/A	90.5 in.	N/A	N/A	90.5 in.	90.5 in.
Win 9x/Me	44 in.	44 in.	44 in.	44 in.	90.5 in.	90.5 in.	90.5 in.	90.5 in.	90.5 in.	90.5 in.	90.5 in.
Win NT 4.0/2000/XP	44 in.	44 in.	44 in.	44 in.	90.5 in.	90.5 in.	90.5 in.	90.5 in.	90.5 in.	90.5 in.	90.5 in.

Print jobs being sent through the Epson standard print driver should be in the RGB format in order for color management to be utilized properly.

* Macintosh OS X allows you to create any paper size regardless of printer driver's limitations. Exceeding these limitations will result in your image being cropped and printed at 8.5 x 11.

Maximum custom page size allowable for EPSON PostScript options (PPD):

	Stylus Color 3000	Stylus Pro 4000	Stylus Pro 5000	Stylus Pro 5500	Stylus Pro 7000	Stylus Pro 7500	Stylus Pro 7600	Stylus Pro 9000	Stylus Pro 9500	Stylus Pro 9600	Stylus Pro 10000 Series
EPSON Stylus RIP	44 in.	N/A	44 in.	N/A	N/A	N/A	N/A	N/A	N/A	N/A	N/A
EPSON Fiery RIP Station	N/A	N/A	44 in.	N/A	See NOTE 1	See NOTE 1	N/A	See NOTE 1	See NOTE 1	N/A	N/A
EPSON Fiery Spark Designer (Mac)	N/A	N/A	N/A	44 in.	N/A	N/A	N/A	N/A	N/A	N/A	N/A
EPSON Fiery Spark Professional	N/A	N/A	N/A	44 in.	N/A	N/A	See NOTE1	N/A	N/A	See NOTE1	See NOTE 1
EPSON ColorBurst RIP	N/A	See NOTE1	N/A	44 in.	N/A	N/A	See NOTE1	N/A	N/A	See NOTE1	See NOTE 1

Print jobs being sent through the Epson PostScript driver can be either RGB or CMYK format. Settings in the RIP will determine how color management is used.

Maximum page size allowable from software applications:

	Stylus Color 3000	Stylus Pro 4000	Stylus Pro 5000	Stylus Pro 5500	Stylus Pro 7000	Stylus Pro 7500	Stylus Pro 7600	Stylus Pro 9000	Stylus Pro 9500	Stylus Pro 9600	Stylus Pro 10000 Series
Adobe Photoshop 5.x/6.x/7.x/	See NOTE 2	See NOTE 2	See NOTE 2	See NOTE 2	See NOTE 2	See NOTE 2	See NOTE 2	See NOTE 2	See NOTE 2	See NOTE 2	See NOTE 2
Adobe Photoshop CS	See NOTE 2	See NOTE 2	See NOTE 2	See NOTE 2	See NOTE 2	See NOTE 2	See NOTE 2	See NOTE 2	See NOTE 2	See NOTE 2	See NOTE 2
*Adobe Illustrator 8.x/9.x	227 in.	227 in.	227 in.	227 in.	227 in.	227 in.	227 in.	227 in.	227 in.	227 in.	227 in.
*Adobe Illustrator CS	227 in.	227 in.	227 in.	227 in.	227 in.	227 in.	227 in.	227 in.	227 in.	227 in.	227 in.
QuarkXPress 4.x/5.x/6	48 in.	48 in.	48 in.	48 in.	48 in.	48 in.	48 in.	48 in.	48 in.	48 in.	48 in.
*CorelDRAW 8.x/9.x/10.x/11.x	1,800 in.	1,800 in.	1,800 in.	1,800 in.	1,800 in.	1,800 in.	1,800 in.	1,800 in.	1,800 in.	1,800 in.	1,800 in.

* These applications allow for tiling of print pages, therefore allowing you to print beyond the printers maximum page length limit and print to the applications limits. The printer driver must be set for Roll Paper (Banner) mode so that page breaks at the printer's maximum page length do not occur (in essence gives you a 0 margin for the bottom of the page). The Stylus Pro 5000/5500 however will give a slight page break at the 44 inch limit as these printers do not support banner mode. Also, printing certain elements from these applications may not utilize color management correctly/properly and may produce output color that is not expected.

NOTE 1:

- a. Under Win 9x/Me, the PPD limit is 129 inches.
- b. Under Windows NT, 2000 and XP, the PPD limit is 1771.6 inches (SP7000/9000 Series) and 1800 inches (SP7600/9600/10000 Series).
- c. Under Mac OSX/8.x/9.x, the PPD limit is 273.06 inches.

NOTE 2:

Adobe Photoshop has a pixel limitation of 30,000 pixels, which means that a document created @ 300ppi can only reach a maximum page size of 100 inches (H and V). When sending jobs to the printer via the standard non-PostScript print driver, Photoshop looks at the input resolution of the printer driver and adjusts the page size accordingly. All Epson large format printers use 360dpi as the input resolution (this is the resolution data is rasterized at), therefore when printing from Photoshop, the maximum page length you will be able to output to any Epson large format printer using the standard Epson print driver would be 83.33 inches (30,000 pixels / 360dpi). As for the Epson desktop products, they rasterize data at 720dpi, therefore the maximum page length obtainable with the standard print driver would be 41.67 inches (30,000 pixels / 720dpi).

Also, under Photoshop 5.x/6.x for the Macintosh and Photoshop 6.x for the PC, the job will end up clipped if it is over the 83.3inch printer page limit. In Photoshop CS, the print job will end up clipped if it is over the 86inch printer page limit; however it will allow you to create a custom paper size of 91inches max. If you are using Photoshop 5.x for the PC, the print job will actually be truncated to fit within the printable area of the printer. Be advised that you may not get a page size error. It may be useful to enable the "print preview" function of your printer driver (if available) so that you do not waste unnecessary media.

The only options for printing beyond the limitations is to save the file and print via an application that does not have the 30,000 pixel limit (may lose color management functions) or print the file through a PostScript RIP (which will allow for longer pages).

UPDATE: Photoshop CS allows for a maximum Pixel limit of 300,000 x 300,000 (this would create a 251.5 GB file!!) This allows Photoshop to have a print dimension of 4166.666 x 4166.666 at 72 ppi (Pixels per Inch). At 360 ppi, your max print size would be 833.333 x 833.333. You can still only print 44 x 90.5" Photoshop CS at this point exceeds the capability of our printers.

For Windows Users, if you encounter partial/incomplete prints while having Finest Detail enabled, please disable this setting. It is recommended for low resolution text and line art to sharpen their edges. For photos, this may create a massive print file that is too large for the printer driver to process correctly.

The following examples show how to setup banner printing from Adobe Illustrator 8.x/9.x and CorelDRAW 9 from the PC platform. The Macintosh versions of these applications should be very similar in function. Please refer to your software documentation for additional assistance.

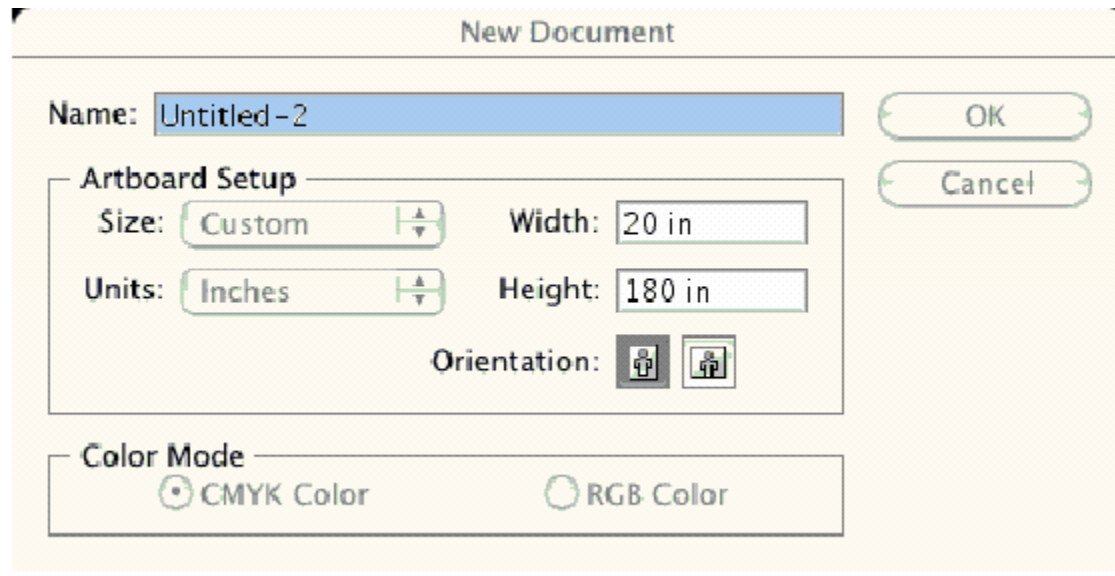
Adobe Illustrator CS:

In this example, we are creating a banner, which is 227 inches (Illustrators max. page setup).

NOTE:

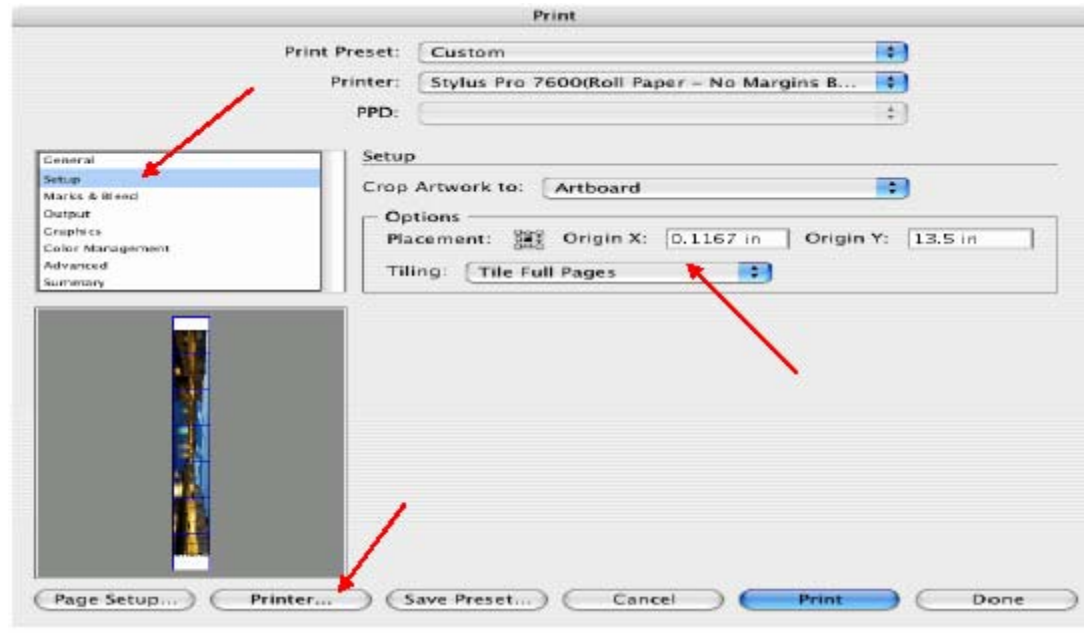
Mac O/S 10.3.3 system is used in this example. Windows versions of this application should be very similar in functionality. Please refer to your software documentation for additional assistance. In this example, a “20 inches wide X 180 inches high” document is created.

1. Click on File and New, set up the width and height (sample shows 20 W x 180 H), then click OK.



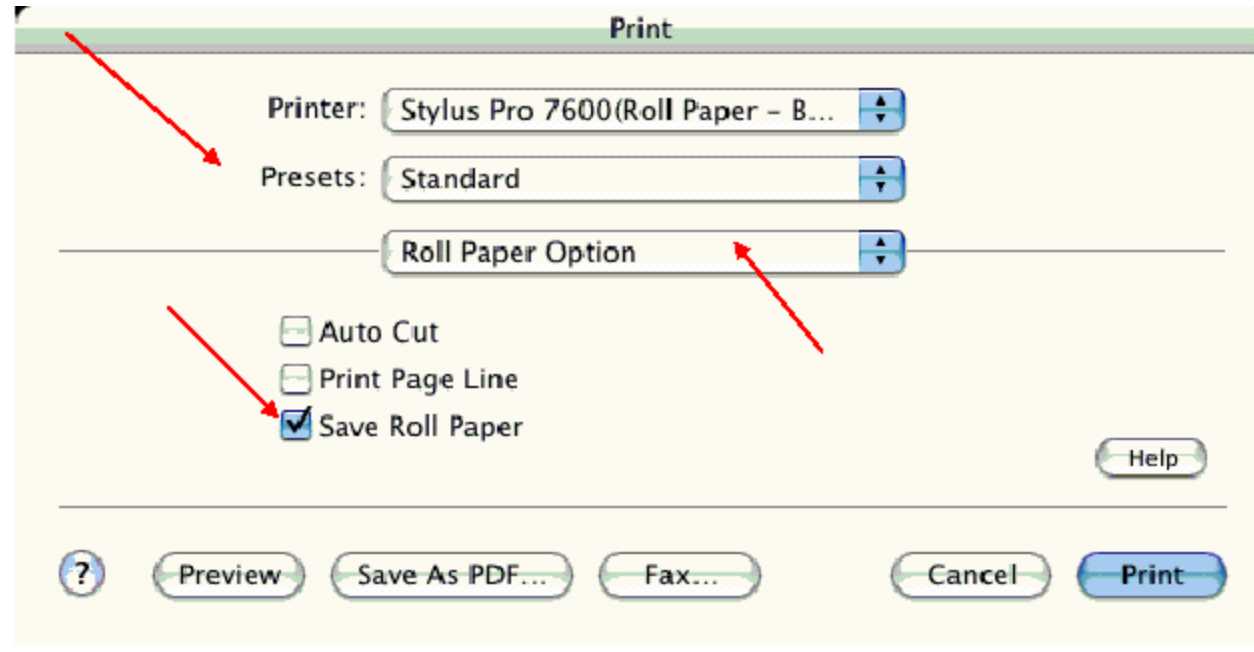
2. Insert the image you want to print and stretch it until it covers the whole page.

3. Click on File, Print, click Setup, under Tiling click on the drop down arrow, select **Tile Full**
4. **Pages** and click the **Printer** button.

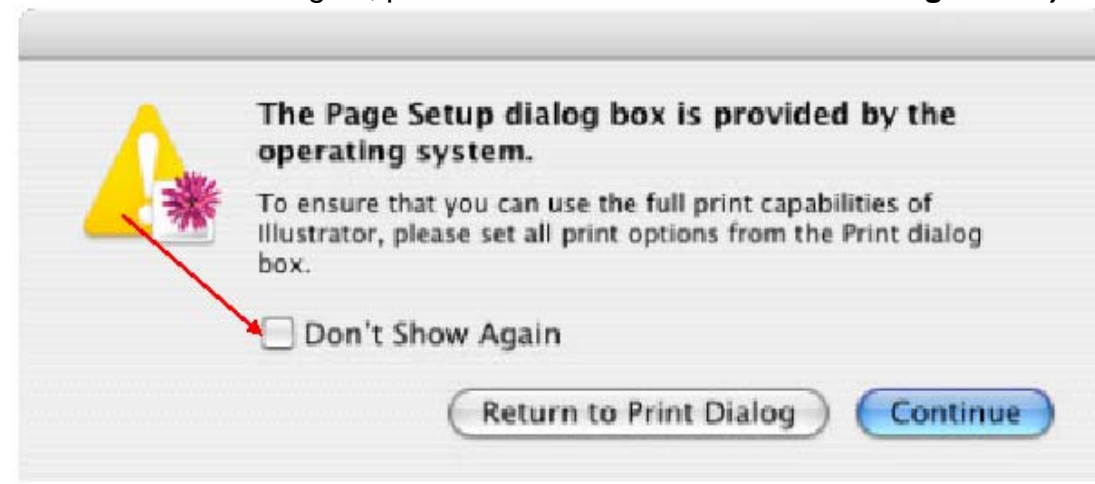


5. When the printer setup window comes up, select your printer name and set the **Roll Paper Options** to:
Roll Paper Banner
Roll Paper Banner – No Margin (if printing no margins)
6. In the **Copies and Pages** section, click on the drop down arrow, select **Roll Paper Option**. Uncheck **Auto Cut** then check **Save Roll Paper**.

7. Then click on **Print**. This will bring you back to the **Print** window.



8. This time click on **Page Setup**, you see the following screen, just click on **Continue** (If you don't want to see the window again, place a check mark on **Don't Show Again** box).

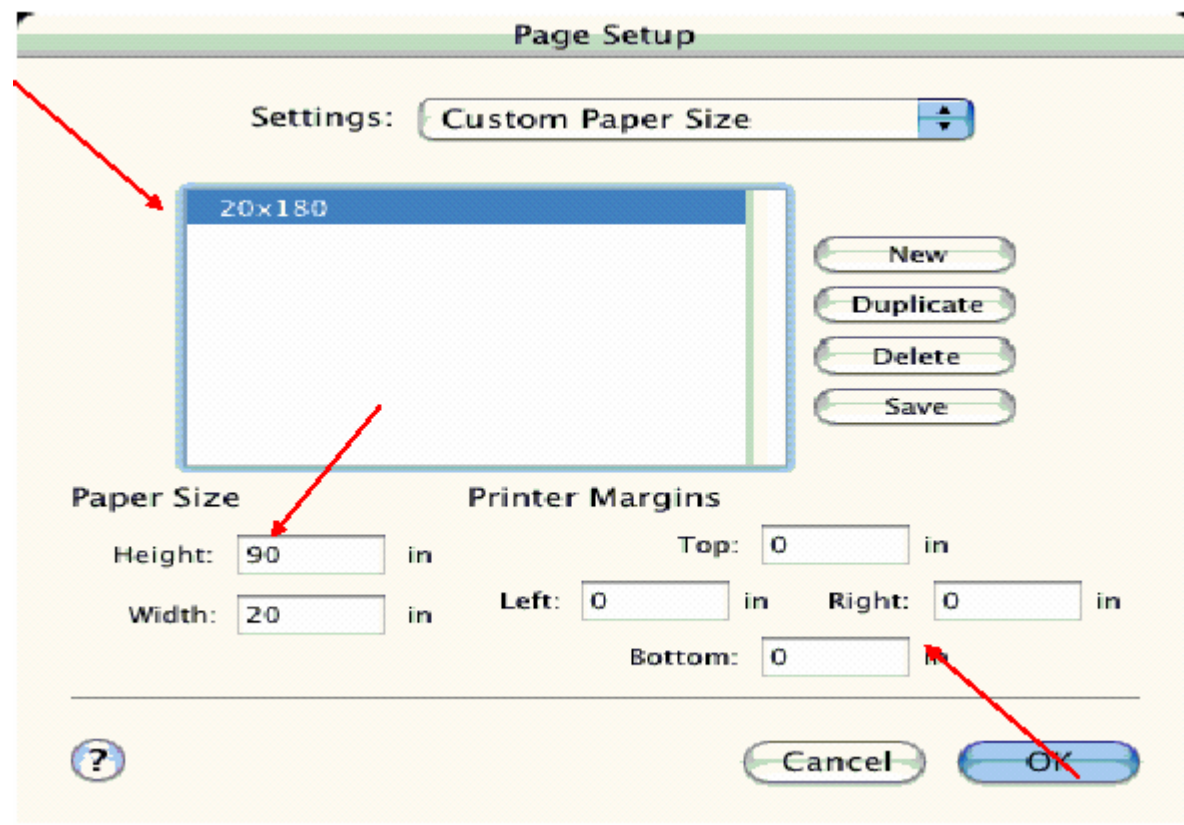


9. When **Page Setup** is open, click on the down arrow for **Custom Paper Size**.

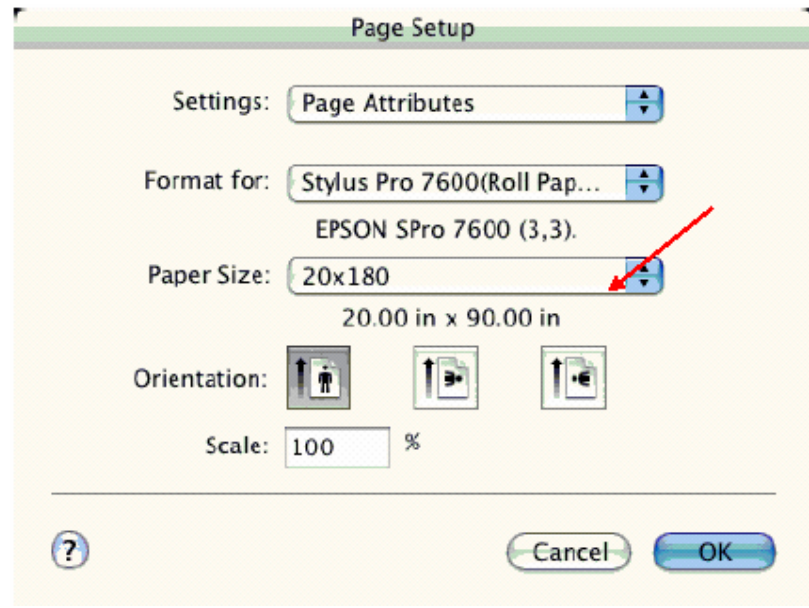
NOTE:

When creating the custom page size, divide the banner size by a value that will make it less than the printer maximum custom page size (90.5 inches). In this example we take $(180/2 = 90)$, therefore the custom page size created would be 20x90 (inches).

10. Click on **New**, name the custom size (i.e. 20 x 180 in this example), under **Paper Size** type in 20 inches for the width and 90 inches for the height, margins should be set to zero (0). Click on **Save**. Click on the down arrow again in the **Custom Paper Size** and select **Page Attributes**.

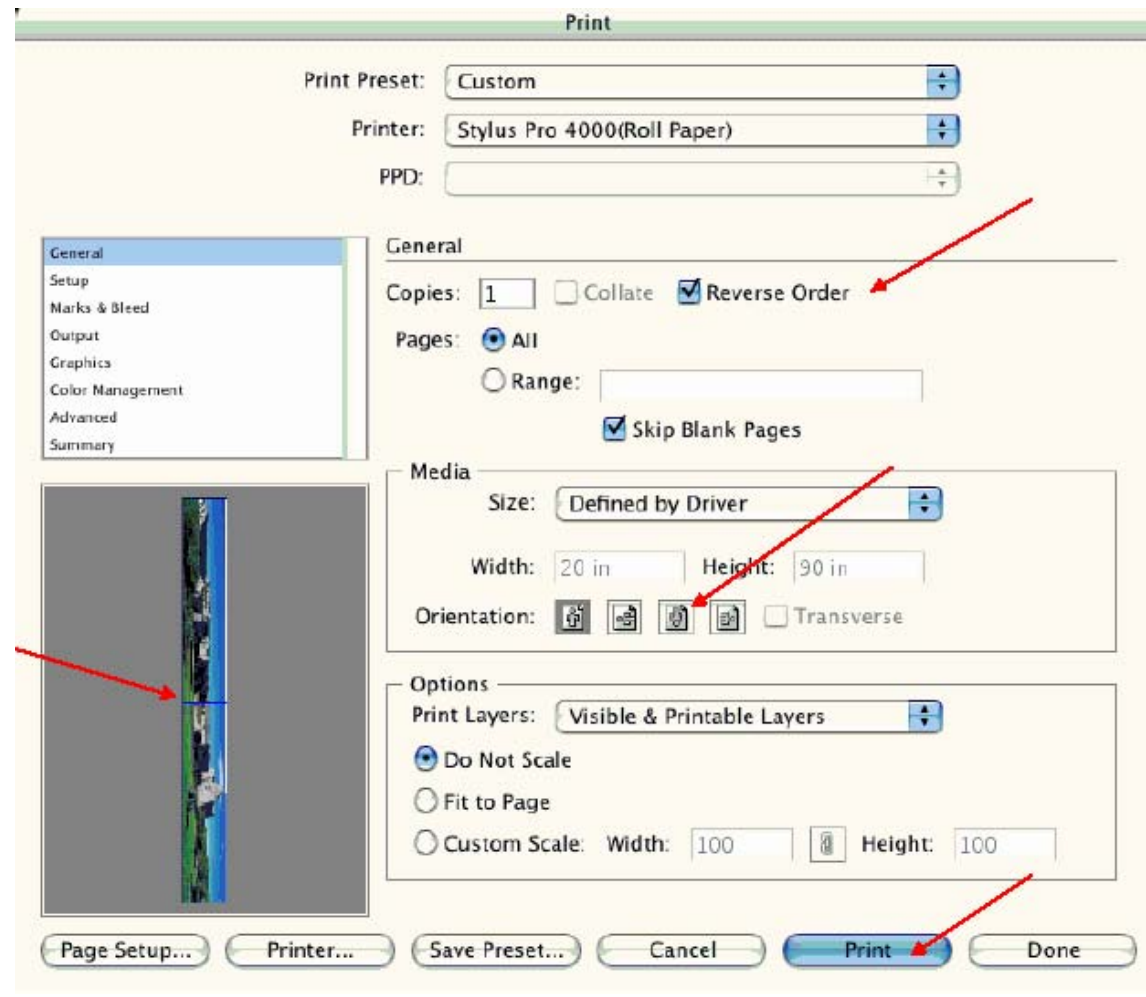


11. Under **Paper Size**, click on the drop down arrow and select the custom paper size you created (i.e. 20 X 180) orientation is set to portrait mode. Then click **OK**.



12. In the **Print** windows the preview pane will show 2 grids or pages. This indicates that a full image is tiled.

13. Click on **General**, then click the square on **Reverse Order**.



4. Click on **Print**.

NOTE 1: When enabled, the first page will be printed first, instead of the last page first. Or Change the orientation to “Reverse”, then you don’t have to check the “Reverse Order”.

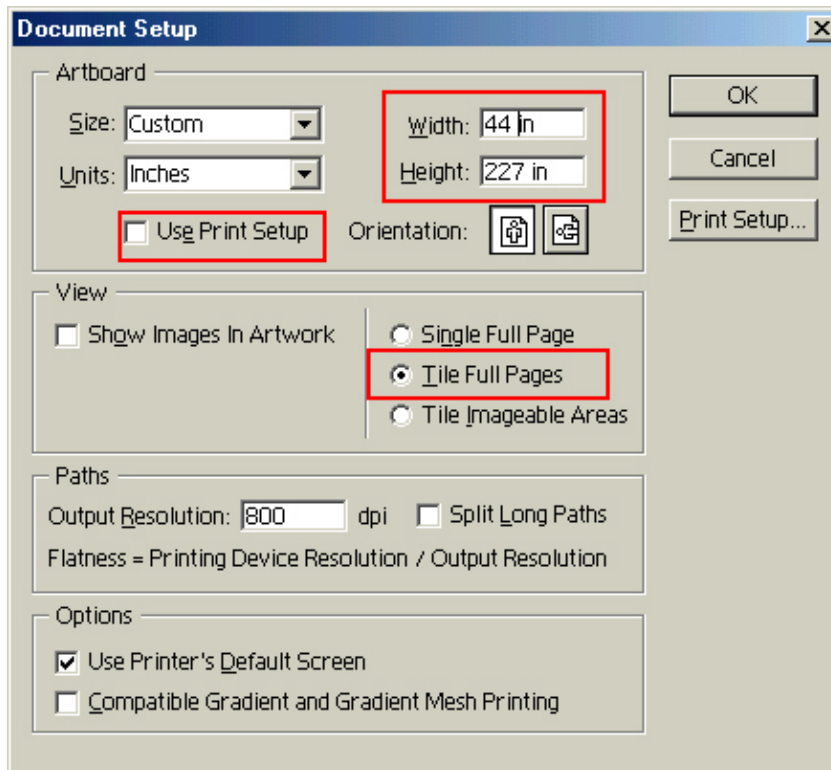
NOTE 2: Always select the custom page size last, if not, it will default to other paper sizes.

NOTE 3: Before printing a large document, make sure you have enough ink to prevent getting an Ink Out message, causing the print job to stop and not completing the entire print.

Adobe Illustrator 8.x/9.x:

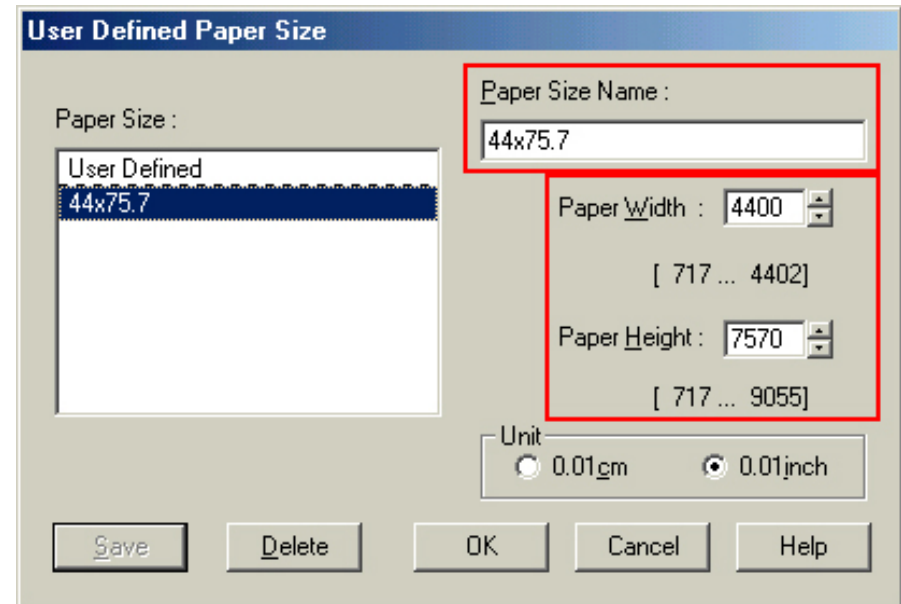
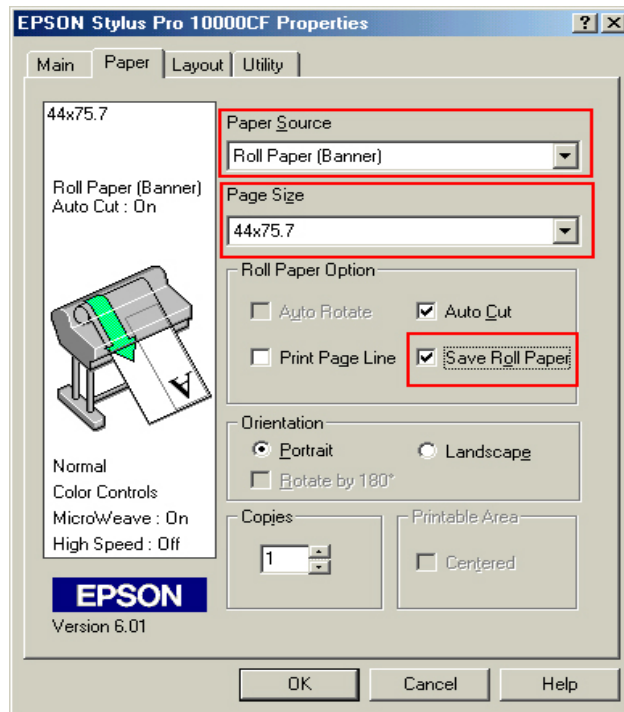
In this example, we are creating a banner, which is 227 inches (Illustrators max. page setup).

1. Launch Illustrator and open or place your file in the page layout.
2. Click on **File**, then **Document Setup**. The following screen appears.
3. Uncheck **Use Print Setup**, enable **Tile Full Pages** and create the page size (in our example we used 44x227 inches).



4. Click, **Print Setup**. This will bring up the print driver.

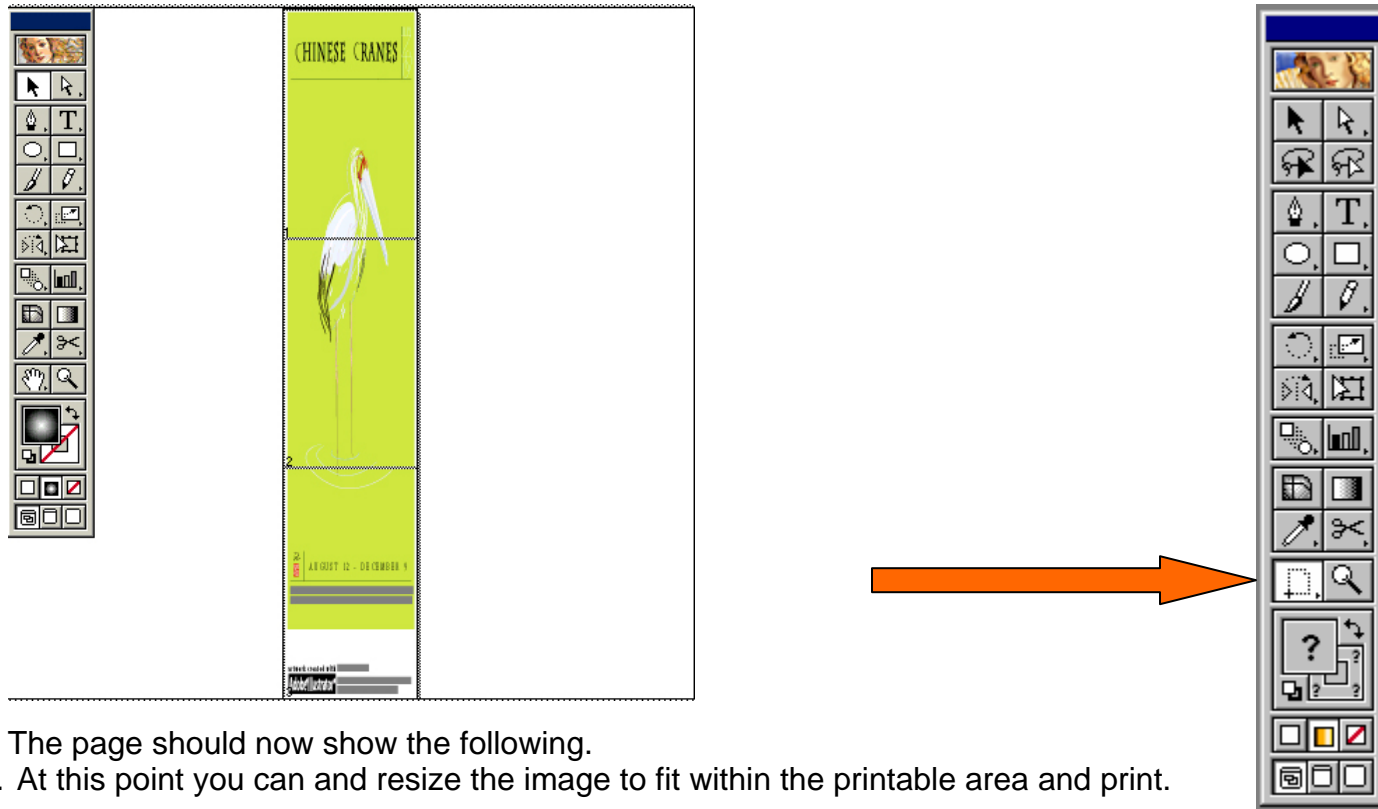
5. Click on the **Paper Tab**. The following appears.



6. Set the **Paper Source** to **Roll Paper (Banner)** and also enable **Save Roll Paper**.

7. When creating the custom page size, divide the banner size by a value that will make it less than the printer maximum custom page size. In this example we take ($227/3 = 75.7$), therefore the custom page size created would be 44x75.7 inches. The reason for this is to save media.

8. After setting the custom page size and other driver settings (media type, resolution, etc.), click **OK**. This will bring you back to the document setup. Now double-click the “Page” tool.

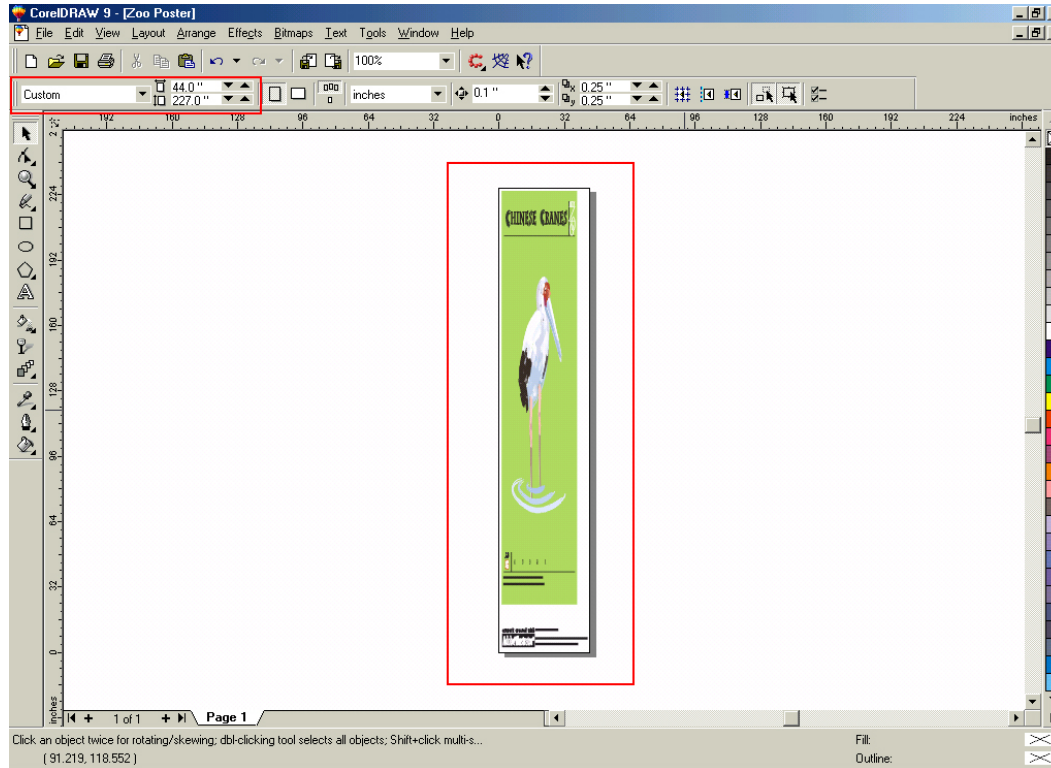


9. The page should now show the following.
10. At this point you can and resize the image to fit within the printable area and print.

CorelDRAW:

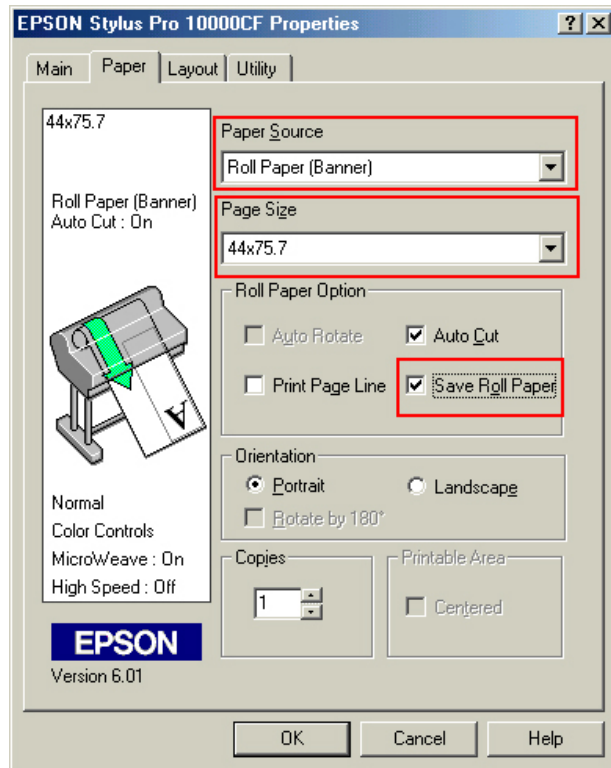
In this example, a banner is created at 227 inches.

1. Launch CorelDRAW and open or place an image in your page layout.
2. Adjust the page size and image for the document as shown in the following image.



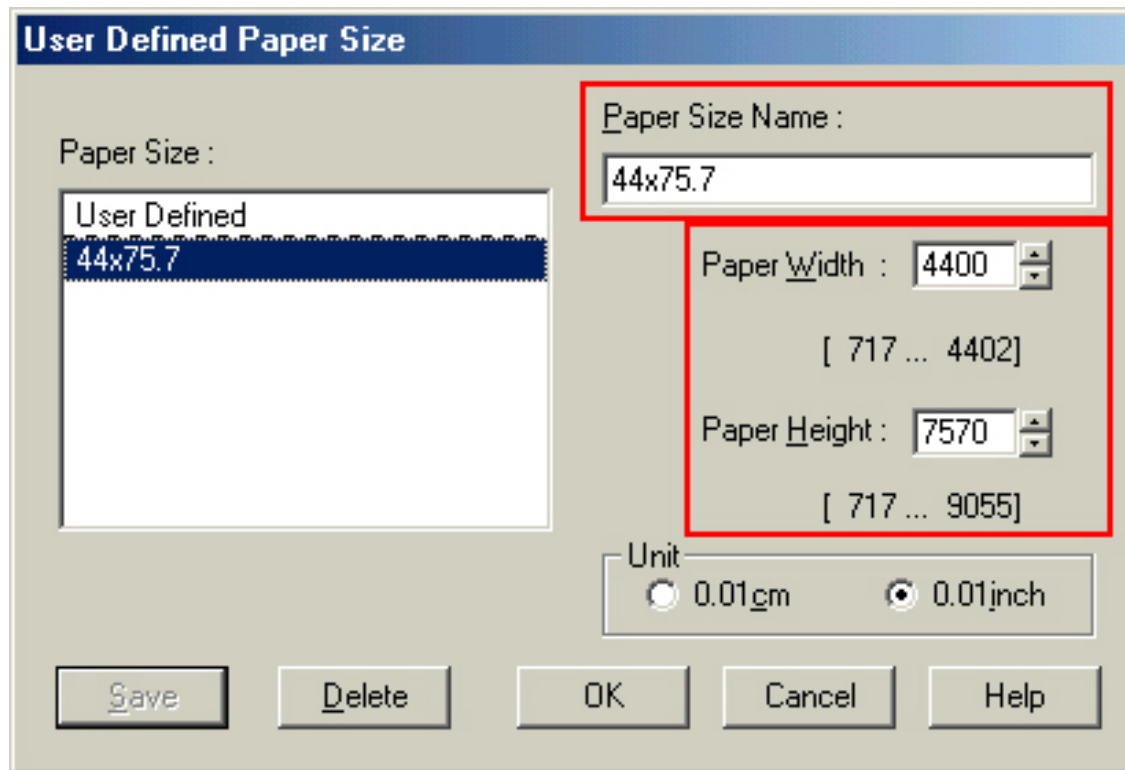
3. Click on **File** and **Print Setup**.

- Click on the **Paper Tab**. The following appears.



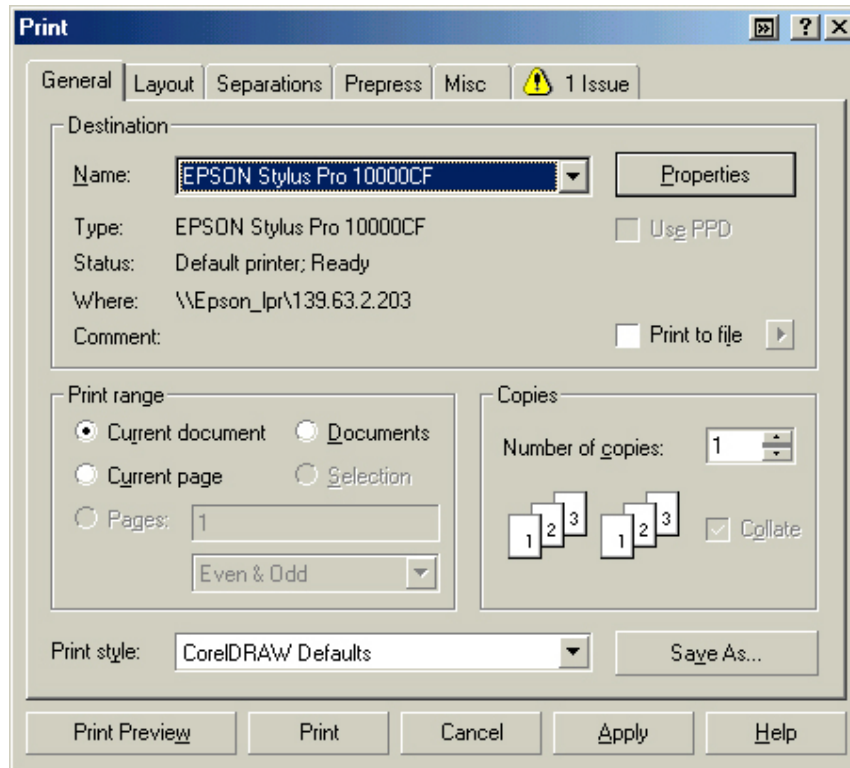
- Set the **Paper Source** to **Roll Paper (Banner)** and also enable **Save Roll Paper**.

6. When creating the custom page size, divide the banner size by a value that will make it less than the printer maximum custom page size. In this example we take $(227/3 = 75.7)$, therefore the custom page size created would be 44x75.7 inches. The reason for this is to save media.

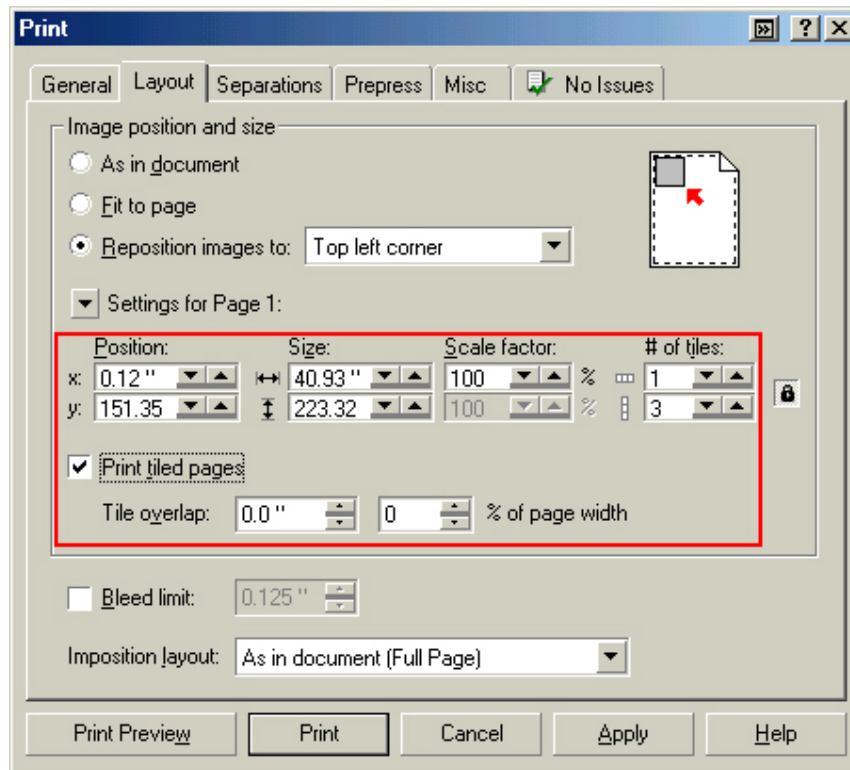


7. After setting the custom page size and other driver settings (media type, resolution, etc.), click **OK**. This will bring you back to the document.

8. At this point, click **File** then **Print**. CorelDRAW will then run a pre-flight check and will show the following window.



9. Click on the **Layout Tab** and enable **Print Tiled Pages** and set any additional parameters as you see fit.



10. At this point you could check other tab settings (if necessary) and click **Print Preview** (recommended) if you want to see how the file will be printed or **Print** to output the file to your printer.

For all other applications, please refer to your software documentation for information on maximum custom page sizes for documents, banners or tiling prints.

EPSON PRODUCT SUPPORT BULLETIN

Date: 07/03/03

Originator: rws

Bulletin #: PSB.2003.05.001B

Authorization: 

Reference: NA

Total Pages: 12

Product: Stylus Pro 7600/9600/10000/10600

Subject: MAC OS X Driver Installation and Removal

INTRODUCTION:

This bulletin was created to inform you how to Install and or Remove the Epson Stylus Pro 7600, 9600, 10000 or 10600 inkjet printer driver on a Macintosh OS X system.

If this is a first time Epson Stylus Pro Macintosh OS X printer driver installation you will only need to follow the driver installation steps.



If you have previously installed the Epson Stylus Pro 7600, 9600, 10000 or 10600 inkjet printer driver on your computer you must first Remove the driver from your system prior to performing the driver installation, this insures a complete driver installation.

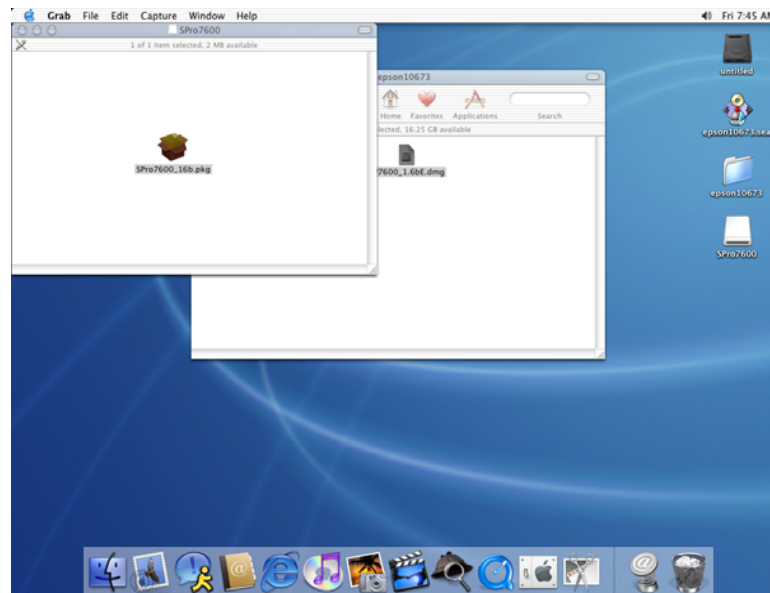
NOTE: Although this document references the Epson Stylus Pro 7600/9600 ALL Epson Stylus Pro series Macintosh OS X printer driver Installation and Removal steps follow the same instructions.

INSTALLING THE DRIVER

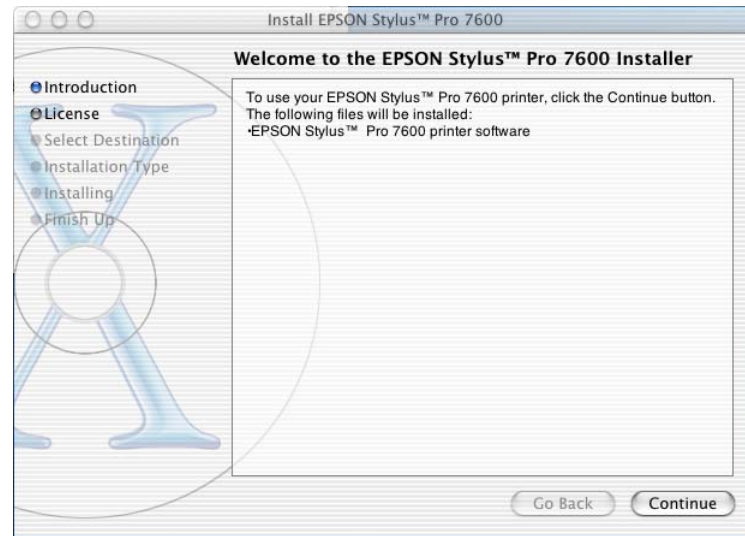
1. After the driver is downloaded to your desktop a new folder is created (example: **epson10673**). Please read the files in this folder as they provide additional information for installing or using the driver.
2. Click on the file with the **.DMG** file extension (example: **SP7600_1.6bE.dmg**) to create the printer driver installation package.
3. The printer driver installation package installer has a **.pkg** extension (example: **SPro7600_16b.pkg**) double click on the file to start the printer driver installation.



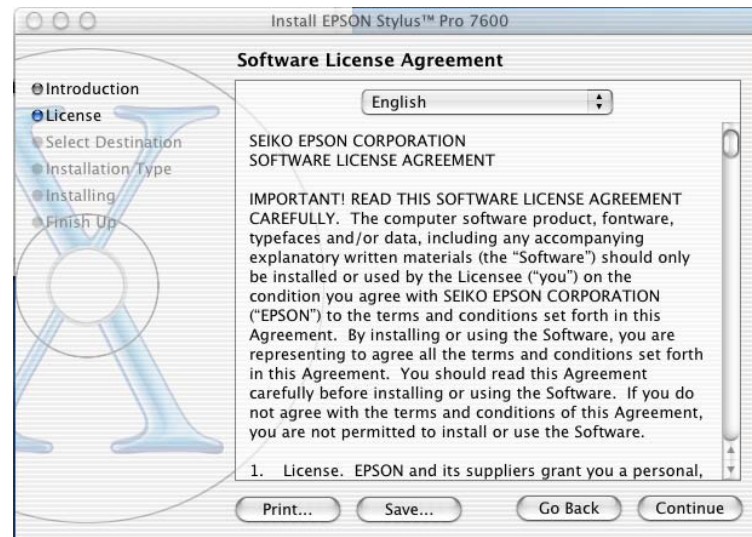
Prior to starting the installation it is recommended you copy the installation package (example: **SPro7600_16b.pkg**) to your hard drive. This will save you time should you wish to reinstall the driver in the future.



4. The installer requires your Macintosh password for Authentication. Enter your Password and click OK.
5. The Installer Introduction screen will be displayed, click CONTINUE.

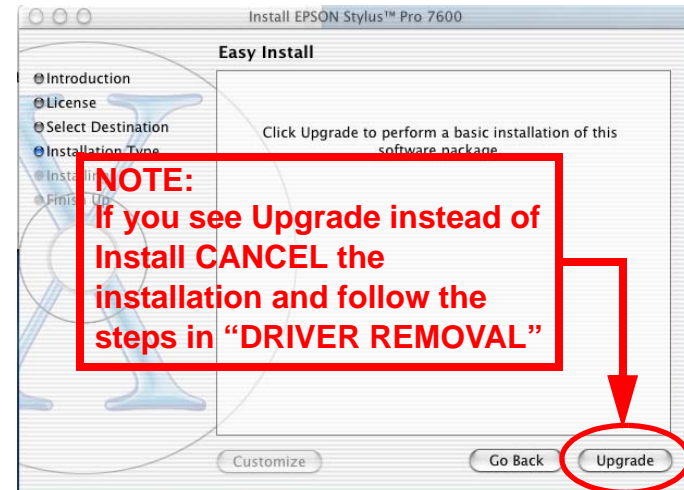
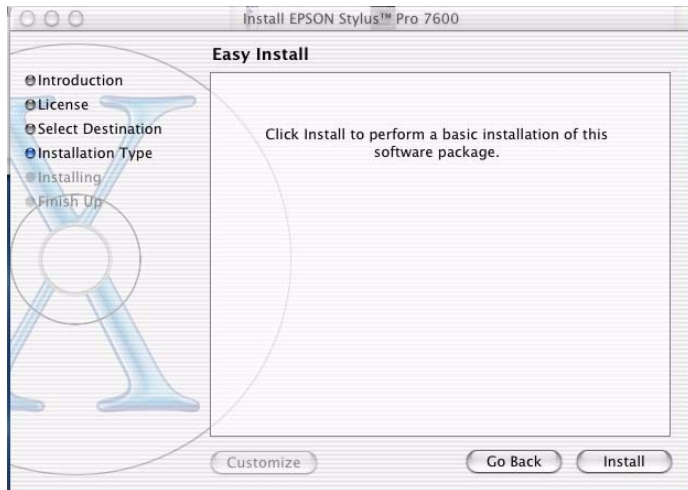


6. Read the License Agreement and click CONTINUE. You are asked to Agree or Disagree to the License Agreement click AGREE to continue the installation.



7. Select the Destination Disk (your OS X volume) to install the driver on by clicking on its icon, then click CONTINUE.

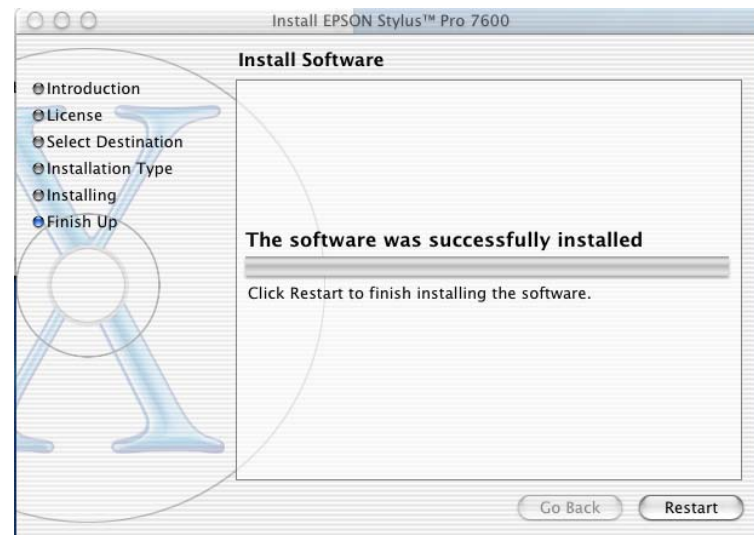
Installation Type is the next step "EASY INSTALL" is the default to perform the basic driver installation, to continue click INSTALL.



8. Next you see a notification screen to Restart your computer after the installation is completed, to continue click CONTINUE INSTALLATION. The Printer Driver will now be installed, a progress window is displayed during the installation.

9. The Printer Driver will now be installed, a progress window is displayed during the installation.

10. When the Printer Driver installation has completed the following window is displayed, click RESTART to Finish the installation.



ADDING THE PRINTER TO PRINT CENTER

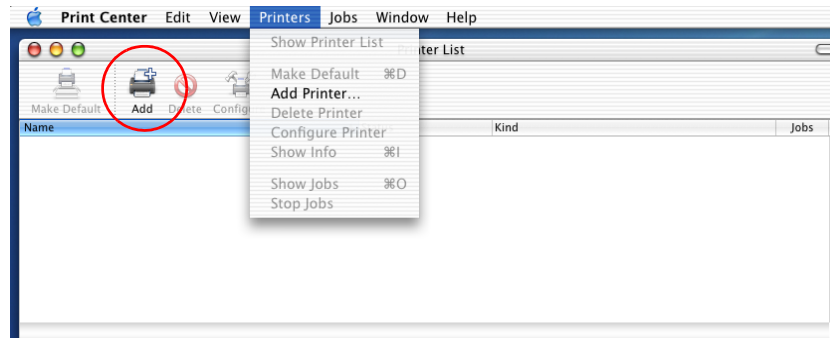
1. After the printer driver is installed you first need to register it with Print Center.
2. The Print Center Utility is located on your hard drive at the following location:
/Applications/Utilities/Print Center.



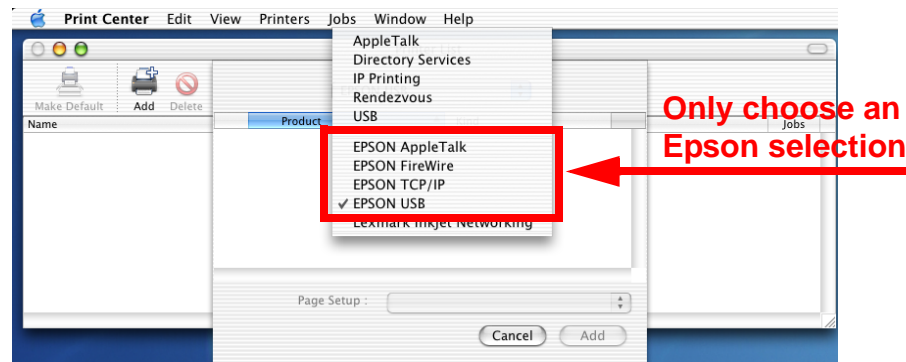
Copy the Print Center to the Short Cut Task Bar for ease of access.



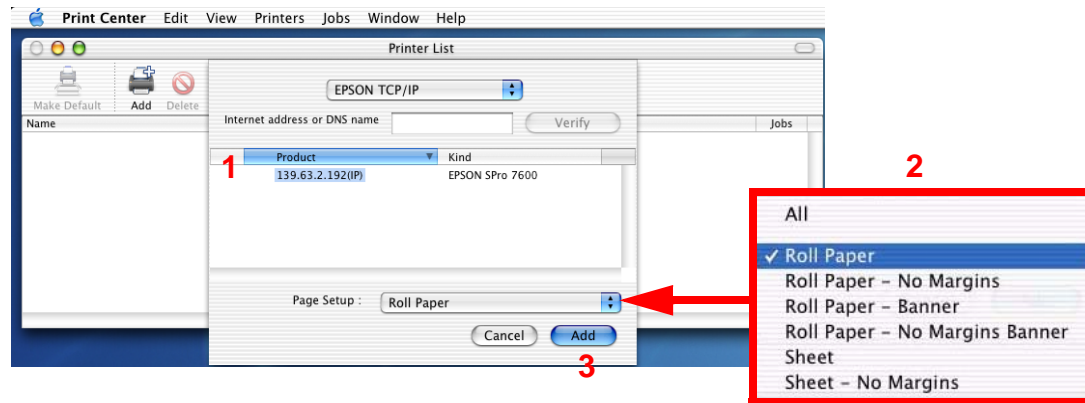
3. You have Two ways to Add a printer. You can use the Add button or you can select Add Printer from the Printers drop down menu, click Add.



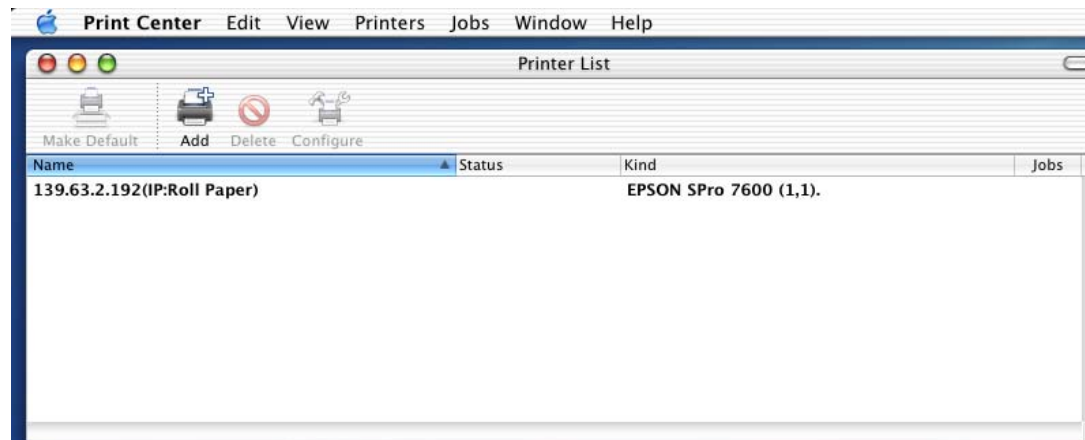
4. On the Add printer window you first need to select the Epson Interface Connection the printer is attached with:



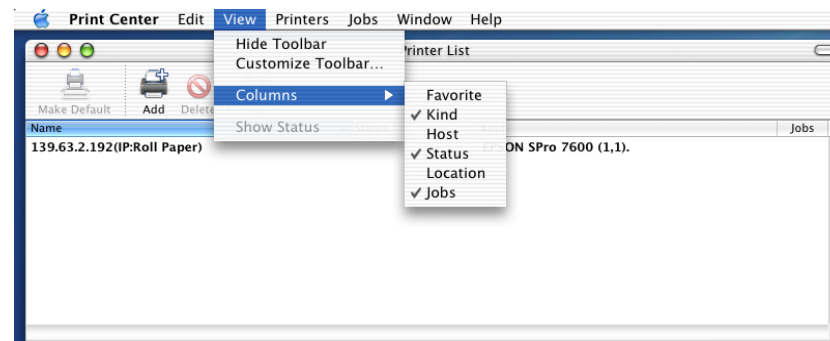
5. After you choose the Epson Interface Connection, the Print Center automatically searches the connection for printers. When the search completes:
 - 5.1 Select your printer from the list by clicking on it.
 - 5.2 Next select your Page Setup. Roll Paper is the default. If your work flow will include several of the choices they can be added individually, or to save time you can add all the choices by selecting All. The choices you make are print queues for the specific job types and will be listed in the Print Center.
 - 5.3 When you have completed making your Paper Setup choices click Add.



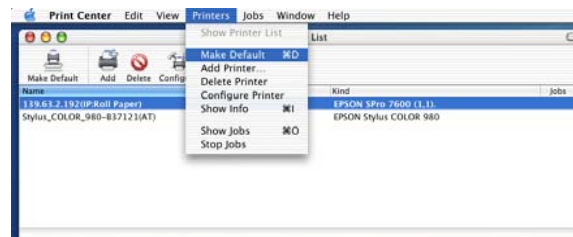
6. The printer and queues will be added to the Print Center Printer List:



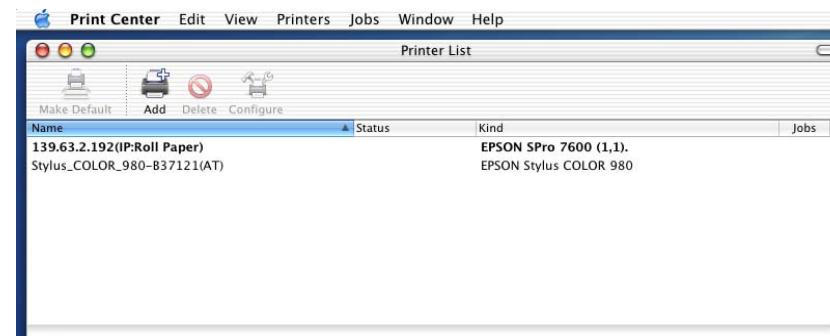
7. To add or remove information displayed about the printer go to the View Menu and select Columns then choose the information you would like to display:



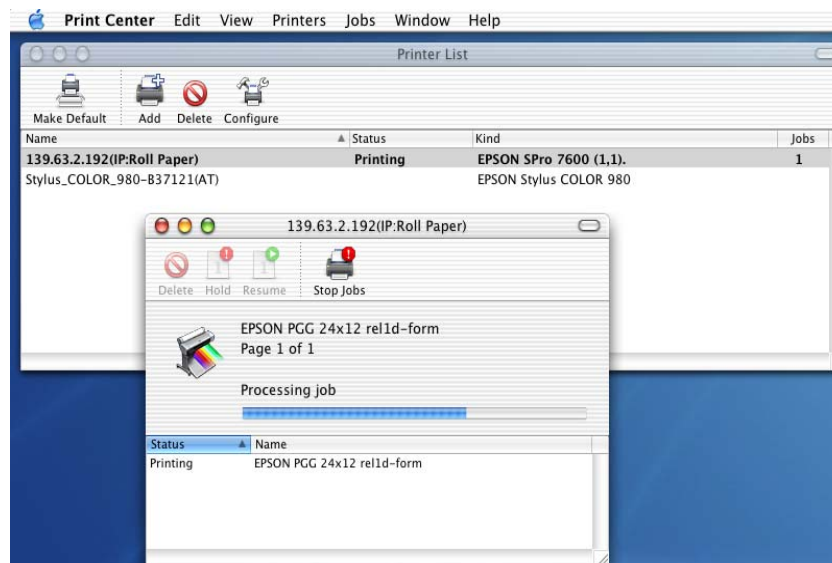
8. To make the printer the Default printer highlight the printer then go to the Printers Menu and select Make Default or click the Make Default button.



9. The Default printer will be highlighted in the Printer List:

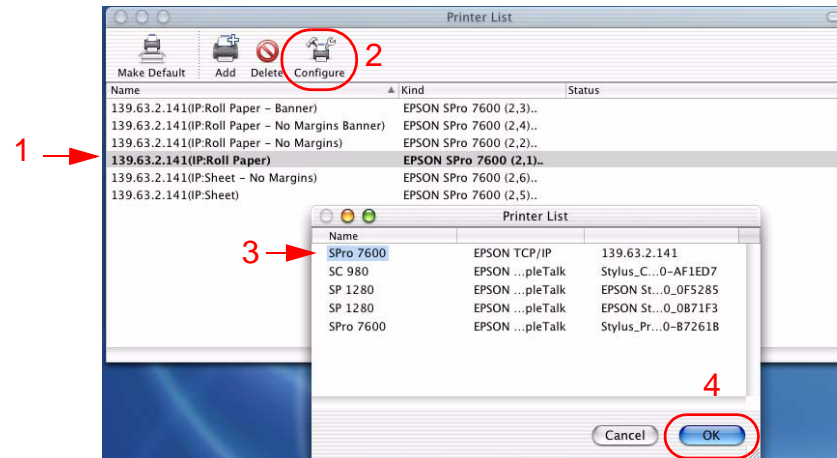


10. To view the Job Status of a printer double click on it in the Printer List to display its information and status:

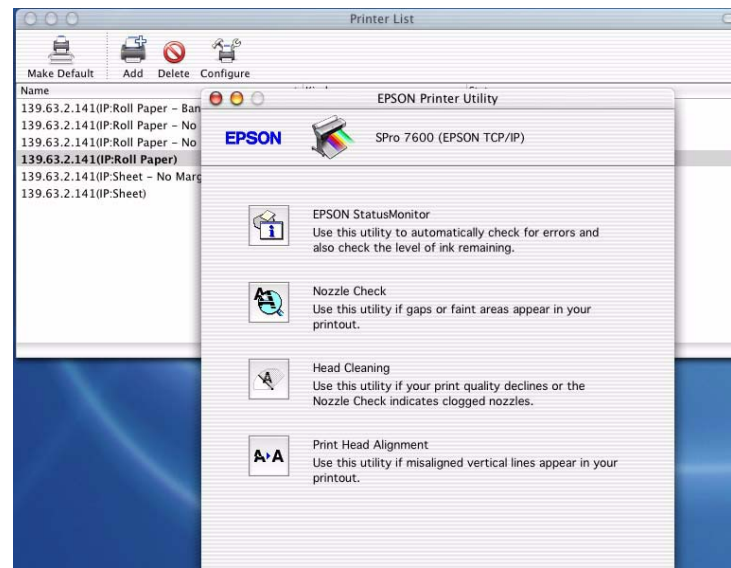


EPSON PRINTER UTILITY

1. You can access the Epson Printer Utility from the Print Center by:
 - 1.1 First selecting your printer from the Print Center Printer List.
 - 1.2 Next click Configure.
 - 1.3 Then from the new Printer List window select your printer and click OK.



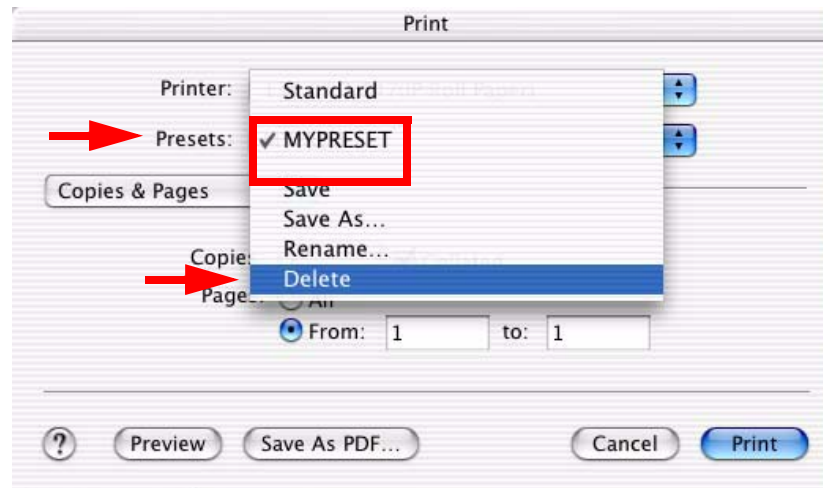
- 1.4 From the Epson Printer Utility you can Check the Status of Ink-Paper-and the printer itself, perform print head Nozzle Checks, Clean the print head, or perform Print Head Alignments.



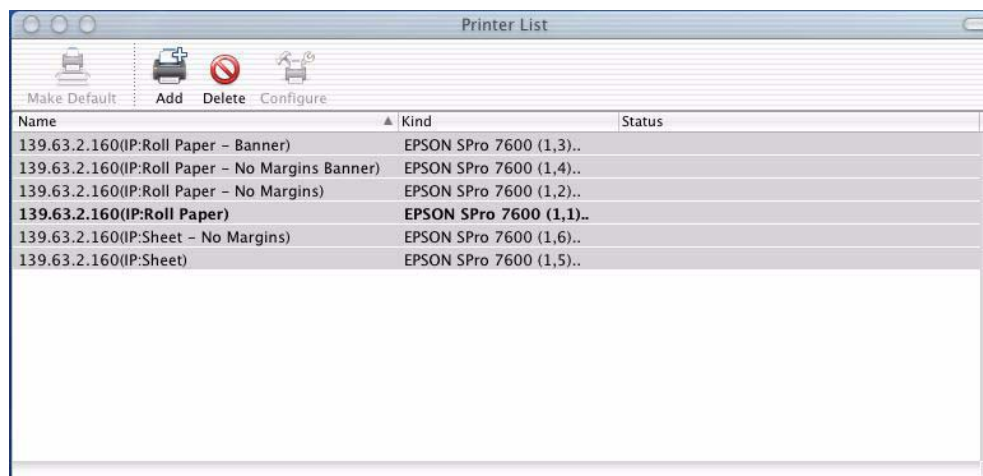
DRIVER REMOVAL

Before installing a New Driver you must first properly remove the existing Driver and all of its components.

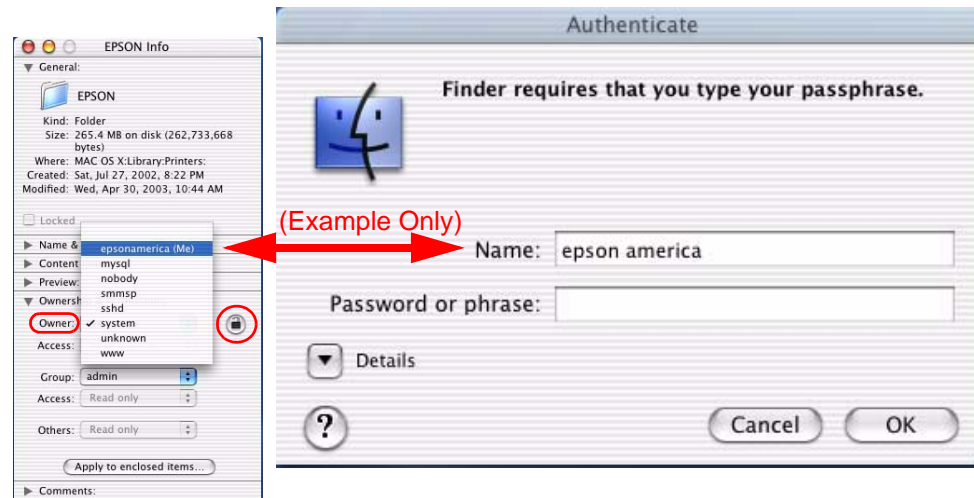
1. Open the Epson Driver from any application and select print. Remove all user created “Presets” that were created for the printer you are removing. From the Presets drop down menu select the Preset (example: MYPRESET) then select Delete..



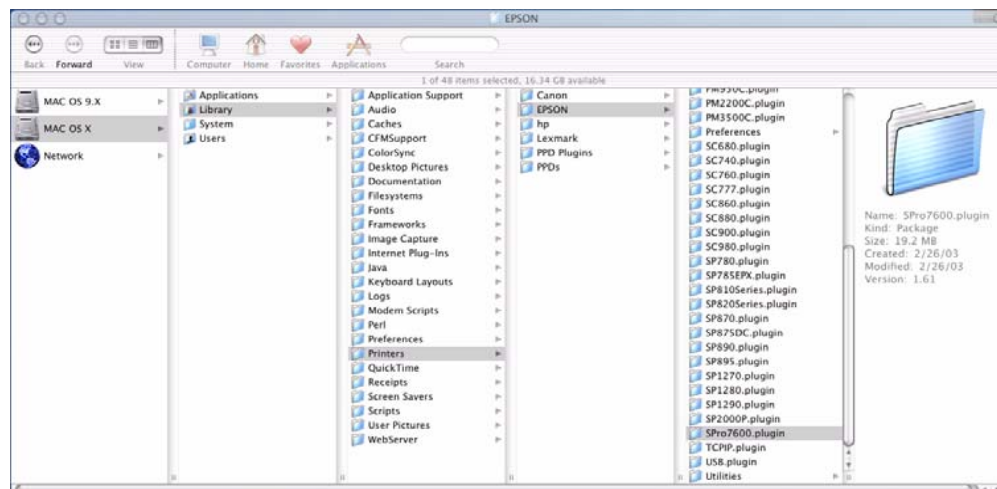
2. Next open the **Print Center** and remove all the printers queue entries for the printer you wish to un-install. Highlight the Queues and press the **Delete** button.



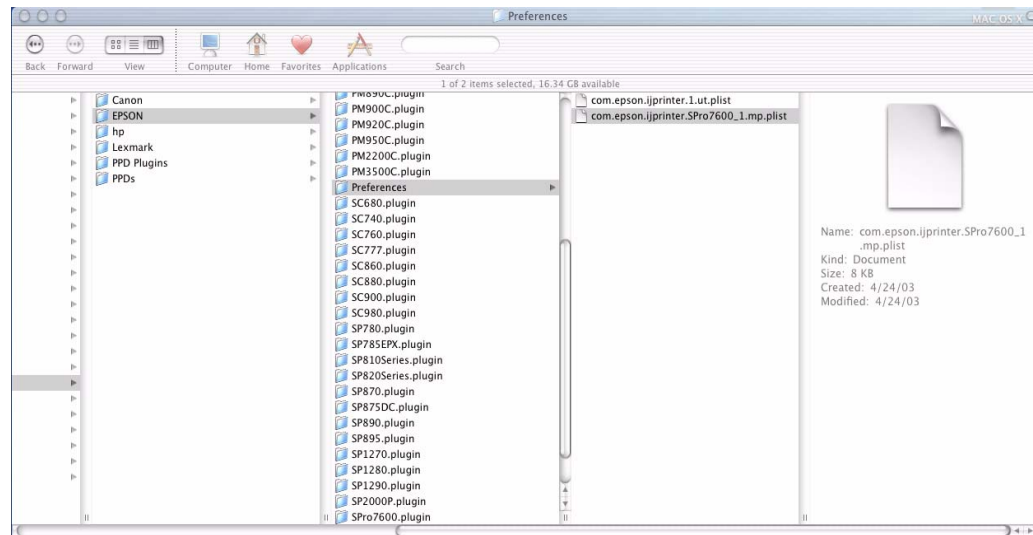
3. In the next steps you will be dragging Files or Folders to the Trash. OS X requires you to have proper “Ownership & Permissions” to the Epson folder on your OS X hard drive. Highlight the Epson folder then GoTo **File, Get Info** and select “**Ownership & Permissions**”. Click on the Pad Lock to unlock it, then from the Owner dropdown menu choose the User name that was used to install OS X and/or the Printer Driver, in addition a password may be required if assigned for the user.



4. You have **TWO** choices for removing files from the Epson Folder. The two choices are outlined below:
- 4.1 Removing **ONLY** the Stylus Pro 7600 or 9600 Plug-in and Preference from the Epson folder (**Preferred**).
- 4.1.1 Drag the Stylus Pro 7600/9600/10600 plug-in to the TRASH.



4.1.2 Drag the printers Preferences to the TRASH.

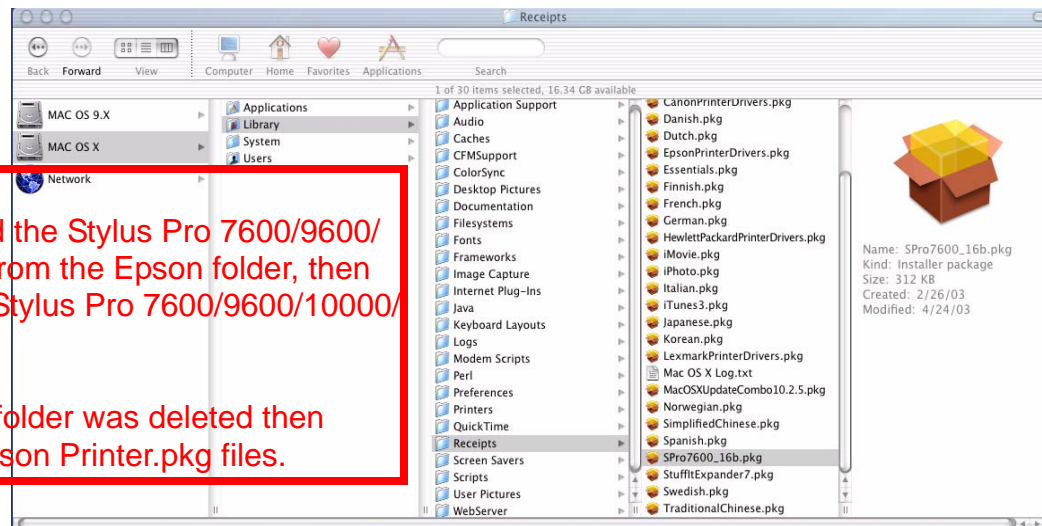


4.2 The second option is to drag the entire Epson folder to the Trash.



Dragging the entire Epson folder to the Trash Deletes ALL Epson Printers.

5. From the Receipts folder Drag the Printers Package information to the TRASH.



EPSON Product Support Bulletin

Date:	09/25/2002	Originator:	MS
PSB #:	PSB.2002.09.004	Authorization:	<i>MS</i>
Reference:	N/A	Total Pages:	
Product(s):	EPSON Stylus Pro 9000, 9500, 9600, 7000, 7500, 7600, 10000, 10600, 5000, 5500 and Stylus Color 3000 Printers		
Subject:	PostScript Printing Support for Mac OS X Native Mode		

This bulletin provides instructions for installing and configuring a Mac OS X Client with your existing EPSON hardware or software RIP. If your EPSON Professional Wide Format printer was bundled with one of the RIP packages listed below, or if you had purchased the RIP as an option, then you can configure a Mac OS X Client with OS Version 10.2 and above for PostScript printing by simply installing the appropriate RIP PPD.

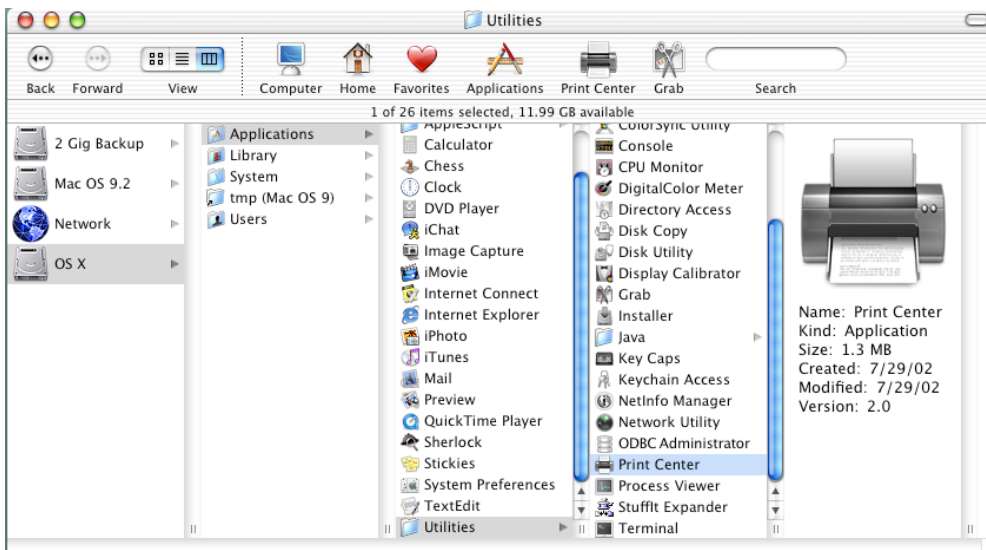
- EFI RS 5000 LX Series – Stylus Pro 5000 printer
- EFI RS 5100 X2 Series - Stylus Pro 9000, 7000, 9500 and 7500 printers
- Fiery Spark Designer – Stylus Pro 5500 printer
- Fiery Spark Professional 1.0 – Stylus Pro 5500 and Stylus Pro 10000ARC/DYE printers
- Fiery Spark Professional 2.0 – Stylus Pro 9600UCM/7600UCM printers
- EPSON StylusRIP - Stylus Color 3000 and Stylus Pro 5000 printers

Installation Instructions:

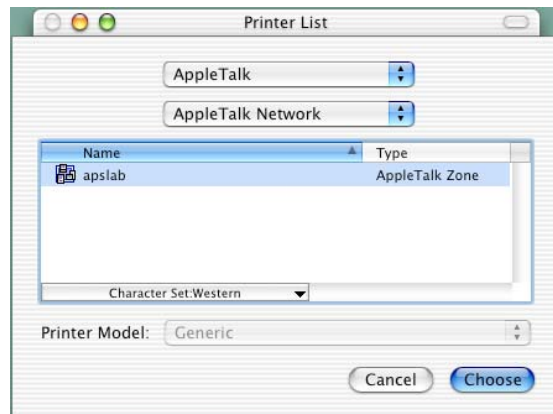
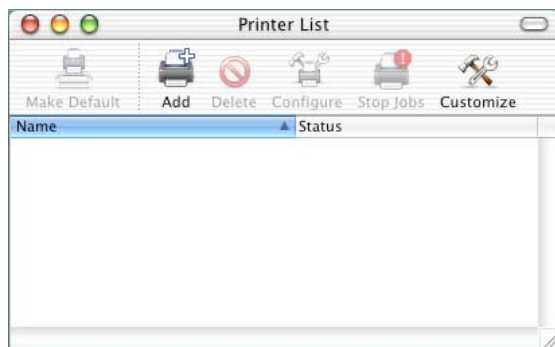
Setup your existing RIP Server as per the instructions provided in the User's Guide that came with your RIP. To setup a Mac OS X Version 10.2 Client follow the instructions below. There are two ways you can add a PPD and configure your printer in OS X, **AppleTalk** or **IP Printing**.

AppleTalk Installation:

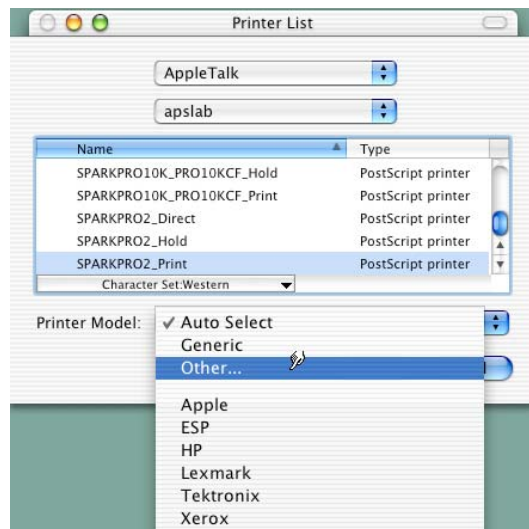
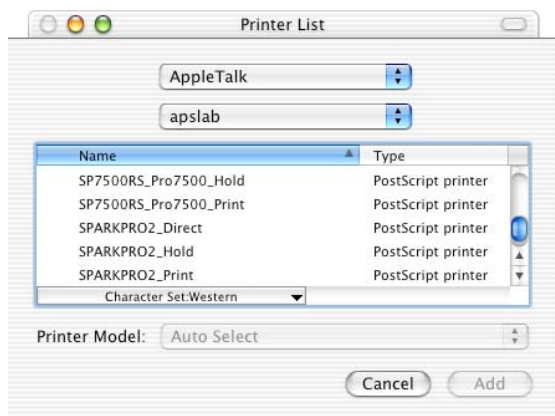
1. Open the **Print Center**, which can be found on your hard disk driver under **Applications - Utilities**



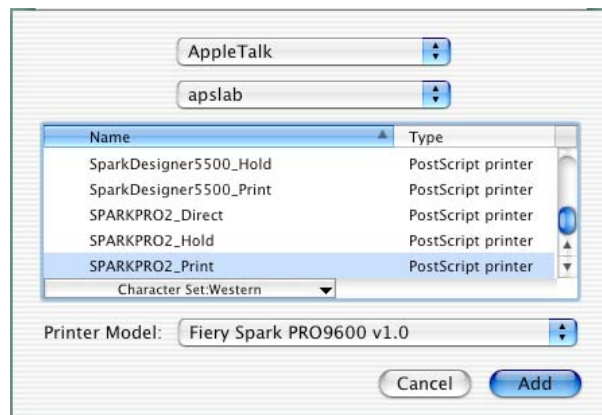
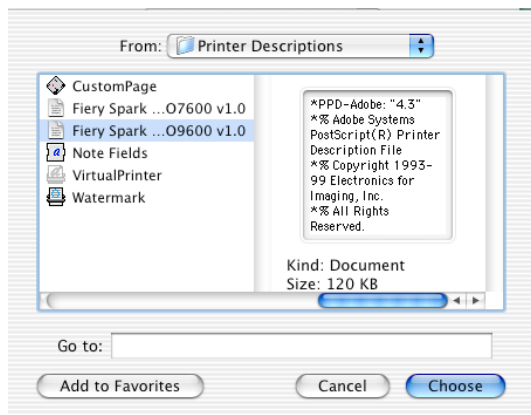
- Click on the **Add** button. Then select **AppleTalk** from the top sub-menu and your **AppleTalk** zone if applicable.



- The **Print Center** should scan the network and find all your devices. Select your printer from the list and click on the **Printer Model** sub-menu. Select **Other** to continue.



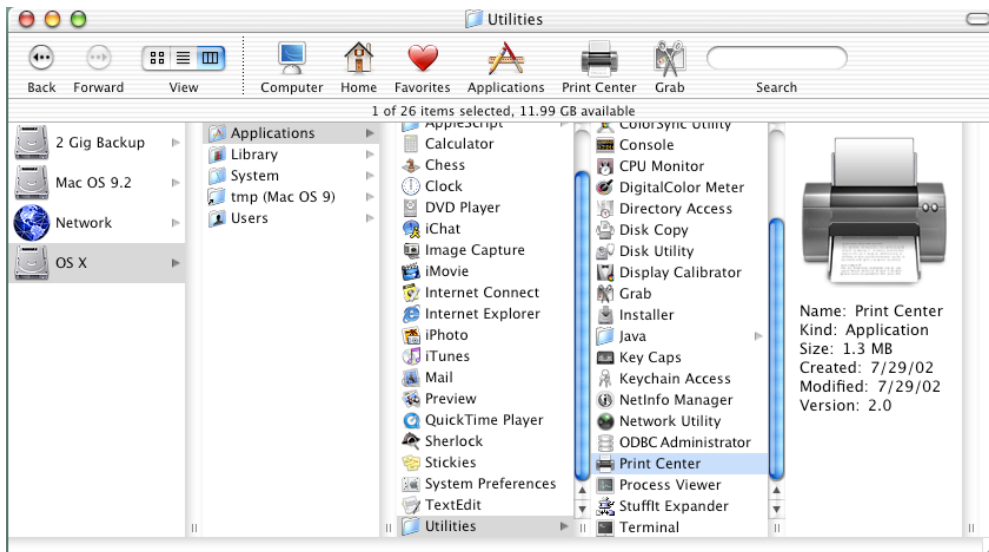
- Navigate to the location of your PPD file. After selecting the PPD file it should reflect the name of the printer under the **Printer Model** section. Click on the **Add** button.



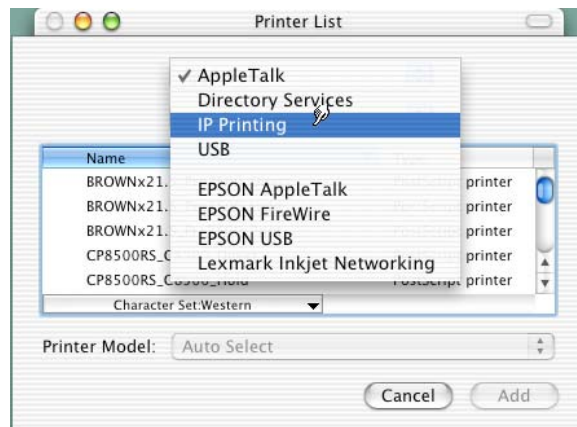
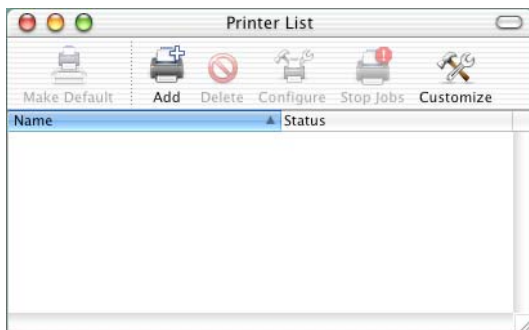
- Repeat the process to add your additional queues. Your Mac OS X Client should now be ready to print.

IP Printing Installation:

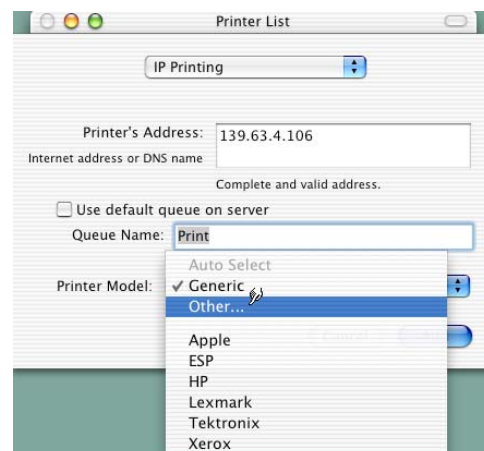
1. Open the **Print Center**, which can be found on your HDD under **Applications - Utilities**



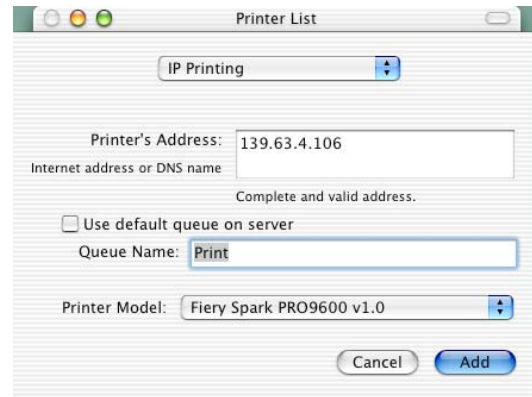
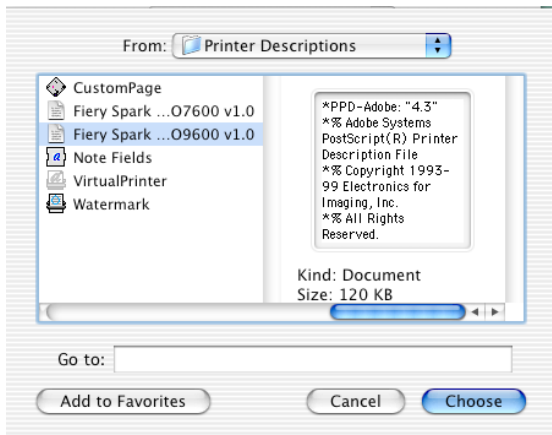
2. Click on the **Add** button and select **IP Printing** from the sub-menu.



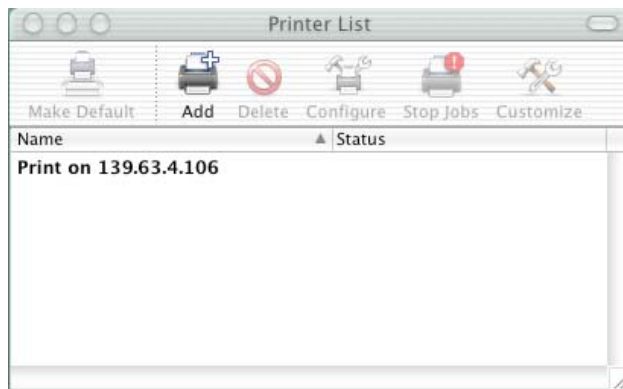
3. Enter the IP Address of the Postscript Server under **Printer's Address**. Uncheck the **Use default queue on server** and type in the queue you wish to add. Click on the **Printer Model** sub-menu and select **Other**.



4. Navigate to the location of your PPD file. After selecting the PPD file it should reflect the name of the printer under the **Printer Model** section. Click on the **Add** button.



5. The Print Center should now show the Queue that you typed along with the IP address.



6. Repeat the process to add your additional queues. Your Mac OS X Client should now be ready to print.

Note: The StylusRIP does not have a separate folder on the CD to select the printer's PPD. In order to select the PPD it must be copied from another client's **Printer Description folder** as shown below (HDD - System folder - Extensions folder - Printer Description folder).

