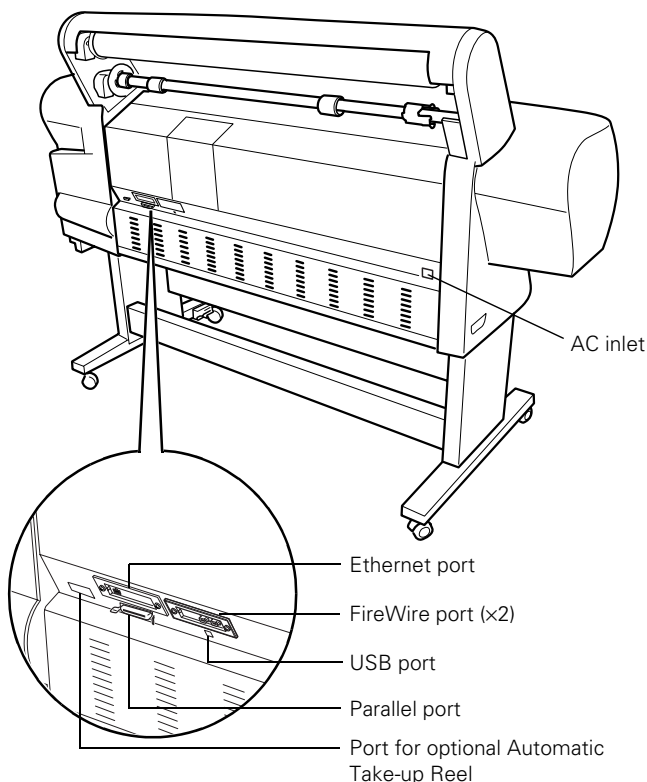
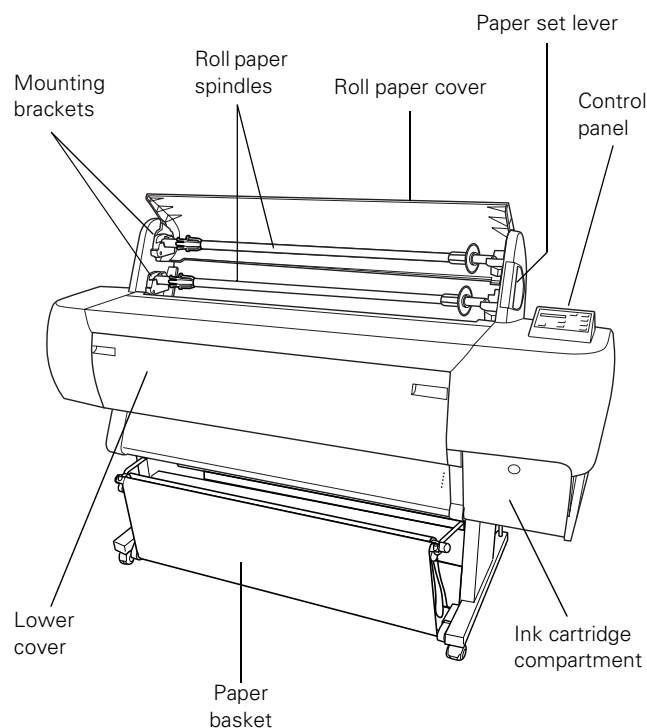


Printer Parts



Printer Specifications

Printing

Ink types	6 color EPSON® Photographic Dye™ ink, Archival™ ink, or UltraChrome™ ink
	UltraChrome ink model switchable between two ink modes:
	<input type="checkbox"/> Photo Black (uses Photo Black ink cartridge)
	<input type="checkbox"/> Matte Black (uses Matte Black ink cartridge)
Nozzle configuration	180 nozzles × 6 (black, cyan, magenta, yellow, light cyan, light magenta)
Resolution	Maximum 1440 dpi × 720 dpi
Print direction	Bidirectional/unidirectional
Control code	ESC/P3® Raster Photographic Driver
Line spacing	1/6 inch (default), programmable in 1/720-inch increments
Paper feed speed	215 ± 10 milliseconds per 1/6-inch line
RAM	128MB (fixed)

Engine Reliability

Total print volume	20,000 B0 images (720 × 360 dpi, bidirectional), or 4.8 million print head passes, before required maintenance
Print head life	28 billion dots per nozzle
Periodic maintenance	Waste ink tank, pump unit, flushing box, head cleaner, cap assembly; require replacement approximately twice during printer life
Cutter blade life	Approximately 2000 B0+ sheets (EPSON media up to 4.33 mil thick)

Electrical

Specification	120V Model	220–240V Model
Input voltage range	90 to 132V	198 to 264V
Rated frequency range	50 to 60 Hz	
Input frequency range	49 to 61 Hz	
Rated current	1.4 A	0.7 A
Power consumption	Approx. 131 W (ISO 10561 Letter Pattern) 30 W or less in sleep mode	

Mechanical

Dimensions Width: 73.4 inches (1865 mm)
 Depth: 28.0 inches (710 mm)
 Height: 48.2 inches (1225 mm)

Weight 284 lb (129 kg) with stand

Paper

The allowable paper dimensions are shown below:

	Roll paper	Cut sheets
Size	8.3 to 44 in. wide (210 to 1118 mm)	8.5 × 11 in. up to 44 in. wide
Maximum external roll diameter	2 in. core: 4 in. (103 mm) 3 in. core: 6 in. (150 mm)	—
Thickness	3.15 to 19.7 mil (0.8 to 0.5 mm)	3.15 to 59 mil (0.8 to 1.5 mm)

Notes:

- ❑ Poor quality paper may reduce print quality and cause paper jams and other problems. If you encounter problems, switch to a higher grade of paper.
- ❑ Do not use curled, folded, or deckle-edge paper.
- ❑ Depending on the media, best feed and print quality are guaranteed on EPSON paper with thicknesses of 3.15 to 4.33 mil (0.08 to 0.11 mm), 64 to 90 gsm.
- ❑ For best results, use paper under the following conditions:
 Temperature: 59 to 77 °F (15 to 25 °C)
 Humidity: 40 to 60% RH

Environmental

Temperature Operation: 50 to 95 °F (10 to 35 °C)
 Storage: –4 to 104 °F (–20 to 40 °C)
 1 month at 104 °F (40 °C)
 Transit –4 to 140 °F (–20 to 60 °C),
 stored in shipping container
 120 hours at 140 °F (60 °C)

Humidity Operation: 20 to 80% RH
 Storage: 20 to 85% RH
 (without Transit 5 to 85% RH (stored in
 condensation) shipping container)

Safety Approvals

Safety standards UL 1950, CSA C22.2 No. 950 FDA

EMC FCC part 15 subpart B, class A,
 CSA C108.8 class A

Ink Cartridges

Cartridge life: *Photographic Dye ink*
 2 years from production date
 UltraChrome and Archival ink
 2 years from production date if unopened;
 within 6 months after opening package, at
 77 °F (25 °C)

Temperature: *Storage (uninstalled):*
 –22 to 104 °F (–30 to 40 °C); 1 month at 104
 °F (40 °C)
 Storage (installed):
 –4 to 104 °F (–20 to 40 °C); 1 month at 104
 °F (40 °C)
 Transit:
 –22 to 140 °F (–30 to 60 °C); 1 month at 104
 °F (40 °C), 120 hours at 140 °F (60 °C)
 Freezing:
 14 °F (–10 °C); ink thaws and is usable after
 at least 3 hours at 77 °F (25 °C)

Capacity 500 ml

Drivers

Macintosh® System 8.5.1 through 9.x (OS X clients supported via RIP, available from the EPSON web site for download), Windows® 95, Windows 98, Windows 2000, Windows Me, Windows XP, and Windows NT® 4.0. Raster drivers are standard. For Adobe® PostScript® support, use the optional EFI® Fiery® Spark Professional 2.0 Software RIP or a third-party software solution.

Interfaces

- ☐ USB (1.1 compatible); recommended cable length less than 6 feet (2 meters)
- ☐ Parallel (IEEE-1284 ECP mode)
- ☐ Ethernet network port (10/100 BaseT)
- ☐ IEEE 1394 (FireWire®) port

The following connections are supported for each operating system:

Connection	Win 95	Win 98	Win NT 4.0	Win 2000	Win Me	Win XP	Mac
Parallel	X	X	X	X	X	X	
USB		X*		X	X	X	X
Ethernet	X	X	X	X	X	X	X
FireWire				X	X	X	X

* Supported on pre-installed operating systems (not upgraded from earlier versions of Windows).

In addition, Macintosh OS X supports USB and Ethernet when running applications in Classic mode.

Consumables and Accessories

Ink Cartridges

The printer's first ink cartridges determine the type of ink the printer uses for the lifetime of the unit:

- ☐ Photographic Dye ink
- ☐ Archival ink
- ☐ UltraChrome ink

Be sure to replace the cartridges with the same type as are already installed, or you will see an error message and the printer won't work until you insert the correct cartridges.

If the printer uses UltraChrome ink, the user must decide which type of black ink to install during initial setup (Matte Black or Photo Black). Once installed, the user can switch between black inks only by following the special procedure described on page 11.

Use the cartridges listed below before the expiration date on the package.

☐ Photographic Dye users:

Black	T499201	Light cyan	T504201
Cyan	T502201	Light magenta	T503201
Magenta	T501201	Yellow	T500201

☐ Archival ink users:

Black	T511201	Light cyan	T516201
Cyan	T514201	Light magenta	T515201
Magenta	T513201	Yellow	T512201

☐ UltraChrome ink users: *

Photo Black	T549100	Light cyan	T549500
Matte Black	T549800	Light magenta	T549600
Cyan	T549200	Yellow	T549400
Magenta	T549300		

* Your UltraChrome printer uses one of two black ink cartridges (Matte Black or Photo Black). Unless you are switching between black ink types (see page 11), use the same type as is currently installed. If you install an incorrect cartridge, you will see an error message.

Accessories

Part	Part number
EFI Fiery Spark Professional 2.0 Software RIP	C842912
Automatic Take-Up Reel System	C12C815251
Replacement 44-inch Take-up Reel Core	C815121
Paper Feed Spindle (Normal Tension) — 2-inch	C811133
Paper Feed Spindle (High Tension) — 2-inch	C811134
Paper Feed Spindle (High Tension) — 3-inch	C811122
Replacement Printer Cutter Blade*	C12C815271
Manual Media Cutting System**	C815182
Replacement Manual Cutter Blade (for Manual Media Cutting System)	C815192

* Replaces the blade for the printer's built-in cutter.

** Designed for use with heavy media, which can damage the printer's built-in cutter.

EPSON Paper and Other Media

The following table lists many kinds of EPSON media available for your printer, and recommends specific papers for your printer's ink type (Photographic Dye, Archival ink, or UltraChrome ink).

In some cases, a different paper may be a better match for your needs, depending on the effect you want to achieve. Always

test samples before purchasing large quantities or running large print jobs.

Check the EPSON Pro Graphics web site (<http://prographics.epson.com>) for additional media that may become available.

EPSON papers for the Stylus Pro 10600

Paper type	Roll sizes	Sheet sizes	Compatible ink		
			Photographic Dye	Archival ink	UltraChrome ink
Premium Glossy Photo Paper (250)*	8.3-inch roll: S041376 13-inch roll: S041378 24-inch roll: S041638 36-inch roll: S041639 44-inch roll: S041640	11" × 17": S041290 11.7" × 16.5": S041288 13" × 19": S041289	✓	✓	✓
Premium Luster Photo Paper*	44-inch roll: S041463 36-inch roll: S041462 24-inch roll: S041461 20-inch roll: S041645 13-inch roll: S041409 10-inch roll: S041644 8.3-inch roll: S041408	8.5" × 11": S041405 11.7" × 16.5" (A3): S041406 13" × 19": S041407	✓	✓	✓
Premium Semigloss Photo Paper	—	8.5" × 11": S041331 13" × 19": S041327	✓	✓	✓
Premium Semimatte Photo Paper (250)*	24-inch roll: S041655 36-inch roll: S041656 44-inch roll: S041657	—	✓		✓
Photo Glossy Paper	44-inch roll: SP91002 36-inch roll: SP91001 24-inch roll: SP91021	—	✓	✓	✓
Photo Semigloss Paper	44-inch roll: SP91004 36-inch roll: SP91003 24-inch roll: SP91022	—	✓	✓	✓
Photo Paper		8.5" × 11": S041141, S041271, S041272 8.3" × 11.7": S041140 11.7" × 16.5": S041142 11" × 17": S041156 13" × 19": S041143 8.3" × 23.4" (Panoramic): S041145	✓		
Photo Quality Ink Jet Paper	—	11" × 17": S041070 13" × 19": S041069 16.5" × 23.4": S041079 17" × 22": S041171 16.5" × 49.21" (Banner): S041102	✓		

EPSON papers for the Stylus Pro 10600 (continued)

Paper type	Roll sizes	Sheet sizes	Compatible ink		
			Photographic Dye	Archival ink	UltraChrome ink
ColorLife™ Photo Paper Semigloss*	24-inch roll: S041664 44-inch roll: S041666	—	✓		
Presentation Matte Paper	44-inch roll: S041220 36-inch roll: S041221 24-inch roll: S041295	—	✓		
Doubleweight Matte Paper	44-inch roll: S041387 36-inch roll: S041386 24-inch roll: S041385	—	✓	✓	✓
Enhanced Matte Paper*	24-inch roll: S041595 36-inch roll: S041596 44-inch roll: S041597	8.5" × 11": S041341 11.7" × 16.5": S041343 13" × 19": S041339		✓	✓
Matte Paper Heavyweight	—	8.5" × 11": S041257 11.7" × 16.5": S041260 13" × 19": S041263	✓		
Enhanced Matte Posterboard	—	24" × 30": S041598 30" × 40": S041599		✓	✓
EPSON Proofing Paper Commercial Semimatte**	13-inch roll: S041668 24-inch roll: S041658 36-inch roll: S041659 44-inch roll: S041660	—	✓		✓
DuPont®/EPSON Commercial Matte Proofing Paper		13" × 19": S041203	✓		
DuPont/EPSON Commercial Glossy Proofing Paper		13" × 19": S041160	✓		
Glossy Paper Photo Weight	44-inch roll: S041389 22-inch roll: S041388	13" × 19": S041456		✓	✓
Glossy Paper Heavyweight	44-inch roll: S041226 36-inch roll: S041227 24-inch roll: S041291	—	✓		
Semigloss Paper Heavyweight	44-inch roll: S041228 36-inch roll: S041229 24-inch roll: S041292	—	✓		
Backlight Film	44-inch roll: S041484 36-inch roll: S041483 24-inch roll: S041482		✓	✓	✓
Photo Quality Glossy Film	—	8.5" × 11": S041072 11" × 17": S041075 13" × 19": S041074	✓		
Posterboard Semigloss	—	20.25" × 28.75": S041237 28" × 40": S041236	✓		
EPSON Velvet Fine Art Paper*	—	8.5" × 11": S041636 13" × 19": S041637		✓	✓
Somerset Velvet for EPSON Fine Art Paper*	24-inch roll: SP91203 44-inch roll: SP91204	24" × 30": SP91200 36" × 44": SP91201 44" × 60": SP91202		✓	✓

EPSON papers for the Stylus Pro 10600 (continued)

Paper type	Roll sizes	Sheet sizes	Compatible ink		
			Photographic Dye	Archival ink	UltraChrome ink
Smooth Fine Art Paper*	44-inch roll: S041433 36-inch roll: S041432 24-inch roll: S041431	24" × 30": S041434 36" × 44": S041435		✓	✓
Textured Fine Art Paper*	44-inch roll: S041449 36-inch roll: S041448 24-inch roll: S041447	24" × 30": S041450 36" × 44": S041451		✓	✓
Synthetic Paper**	44-inch roll: S041401 36-inch roll: S041400 24-inch roll: S041399	—		✓	✓
Adhesive Synthetic Paper**	44-inch roll: S041404 36-inch roll: S041403 24-inch roll: S041619	—		✓	✓
Adhesive Vinyl	44-inch roll: S041438 36-inch roll: S041437 24-inch roll: S041436	—		✓	✓
Canvas	44-inch roll: S041533 36-inch roll: S041532 24-inch roll: S041531	—		✓	✓
Tyvek® Brillion™	44-inch roll: S041496 36-inch roll: S041495 24-inch roll: S041494	—		✓	✓
Watercolor Paper-Radiant White*	—	13" × 19": S041351		✓	✓

* Requires optional 3-inch high-tension spindle

** Requires optional 2-inch high-tension spindle

Selecting Media Type Settings

The following tables list recommended Media Type settings, depending on the type of ink installed in the printer (Photographic Dye, Archival, or UltraChrome ink).

In some cases, a different setting may work better, depending on the effects the user wants to achieve. Before printing on unfamiliar paper, it's best to experiment with various settings to determine which one works best.

After selecting the best Media Type setting, the user can fine-tune how the image is printed using the Paper Configuration menu. See the *Printer Guide* for details.

Settings for Photographic Dye

Product name	Media Type setting
Premium Glossy Photo Paper (250)	PHOTO GLOSSY PAPER
Premium Luster Photo Paper	PREMIUM LUSTER PHOTO PAPER
Premium Semigloss Photo Paper	PHOTO SEMIGLOSS PAPER
Premium Semimatte Photo Paper (250)	PREMIUM LUSTER PHOTO PAPER
Photo Glossy Paper	PHOTO GLOSSY PAPER
Photo Semigloss Paper	PHOTO SEMIGLOSS PAPER
Photo Paper	PHOTO PAPER
Photo Quality Ink Jet Paper	PHOTO QUALITY INK JET PAPER
ColorLife Photo Paper Semigloss	COLORLIFE PHOTO PAPER SEMIGLOSS
Presentation Matte Paper	PRESENTATION MATTE PAPER
Doubleweight Matte Paper	PHOTO QUALITY INK JET PAPER
Matte Paper Heavyweight	PRESENTATION MATTE PAPER
EPSON Proofing Paper Commercial Semimatte	PHOTO SEMIGLOSS PAPER
Glossy Paper Heavyweight	PHOTO PAPER
Semigloss Paper Heavyweight	PHOTO SEMIGLOSS PAPER
Backlight Film	PHOTO SEMIGLOSS PAPER
Photo Quality Glossy Film	GLOSSY FILM
Posterboard Semigloss	PHOTO SEMIGLOSS PAPER

Settings for Archival ink

Paper type	Media Type setting
Premium Luster Photo Paper	PREMIUM LUSTER PHOTO PAPER
Premium Glossy Photo Paper (250)	PREMIUM GLOSSY PHOTO PAPER
Premium Semigloss Photo Paper	PREMIUM SEMIGLOSS PHOTO PAPER
Photo Glossy Paper	PHOTO GLOSSY PAPER
Photo Semigloss Paper	PHOTO SEMIGLOSS PAPER
Doubleweight Matte Paper	DOUBLEWEIGHT MATTE PAPER

Settings for Archival ink (continued)

Paper type	Media Type setting
Glossy Paper - Photo Weight	GLOSSY PAPER - PHOTO WEIGHT
Backlight Film	BACKLIGHT FILM
EPSON Velvet Fine Art Paper	SMOOTH FINE ART PAPER
Somerset Velvet for EPSON Fine Art Paper	PHOTO SEMIGLOSS PAPER
Smooth Fine Art Paper	SMOOTH FINE ART PAPER
Textured Fine Art Paper	TEXTURED FINE ART PAPER
Synthetic Paper	SYNTHETIC PAPER
Adhesive Synthetic Paper	ADHESIVE SYNTHETIC PAPER
Adhesive Vinyl	ADHESIVE VINYL
Canvas	CANVAS
Tyvek Brillion	TYVEK BRILLION
Watercolor Paper-Radiant White	WATERCOLOR PAPER-RADIANT WHITE

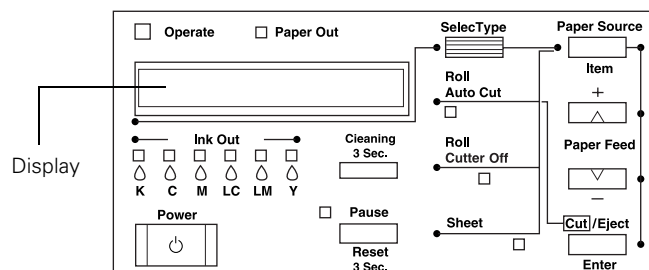
Settings for UltraChrome ink *

Paper type	Media Type setting
Premium Glossy Photo Paper (250)	PREMIUM GLOSSY PHOTO PAPER (250)
Premium Luster Photo Paper	PREMIUM LUSTER PHOTO PAPER
Premium Semigloss Photo Paper	PREMIUM SEMIGLOSS PHOTO PAPER
Premium Semimatte Photo Paper (250)	PREMIUM SEMIMATTE PHOTO PAPER (250)
Photo Glossy Paper	PHOTO GLOSSY PAPER
Photo Semigloss Paper	PHOTO SEMIGLOSS PAPER
Doubleweight Matte Paper	DOUBLEWEIGHT MATTE PAPER
Enhanced Matte Paper	ENHANCED MATTE PAPER
Enhanced Matte Posterboard	ENHANCED MATTE POSTERBOARD
EPSON Proofing Paper Commercial Semimatte	PHOTO SEMIGLOSS PAPER
Glossy Paper - Photo Weight	GLOSSY PAPER - PHOTO WEIGHT
Backlight Film	BACKLIGHT FILM
EPSON Velvet Fine Art Paper	SMOOTH FINE ART PAPER
Somerset Velvet for EPSON Fine Art Paper	ENHANCED MATTE PAPER (roll) or ENHANCED MATTE POSTERBOARD (sheet)
Smooth Fine Art Paper	SMOOTH FINE ART PAPER
Textured Fine Art Paper	TEXTURED FINE ART PAPER
Synthetic Paper	ENHANCED SYNTHETIC PAPER
Adhesive Synthetic Paper	ENHANCED ADHESIVE SYNTHETIC PAPER
Canvas	CANVAS

* Some of these settings are available only when the appropriate black ink mode is being used (see page 11).

Control Panel

The control panel includes various lights and a display to indicate the status of the printer:



When your ink or paper runs out or a problem occurs, a message appears on the display. The lights on the control panel come on or flash. The following table lists the messages and includes an explanation and instructions for correcting the problem.

Error messages

Message	Light	Explanation	Response
INK LOW	Ink Out light(s) flashing	Ink cartridge(s) are nearly empty (printing continues).	Replace ink cartridge(s) indicated by Ink Out light(s). See page 10 for instructions.
INK OUT	Ink Out light(s) on	Ink cartridge(s) are empty (printing stops).	Replace the ink cartridge(s) indicated by Ink Out light(s). See page 10 for instructions.
NO INK CARTRIDGE	Ink Out light(s) on	Ink cartridge(s) not installed.	Install ink cartridges as indicated by the lights. Make sure you install the correct Photographic Dye, Archival ink, or UltraChrome ink cartridges. See page 10 for instructions.
WRONG CARTRIDGE INVALID CARTRIDGE	Ink Out light(s) on	You tried to install the wrong ink cartridge.	<p>If you are installing ink cartridges for the first time, you must install the cartridges that came with your printer.</p> <p>If you are replacing ink cartridges, check the package and product code. You must use the ink cartridges designed for your printer. Other cartridges will not work.</p>
FRONT COVER OPEN	Pause light on	Lower cover is open.	Close the lower cover.
INK COVER OPEN	Pause light on	You are replacing the ink cartridge(s) and the ink compartment cover is open.	Close the ink compartment cover when you are finished replacing the ink cartridge(s).
LOAD ROLL PAPER LOAD SHEET PAPER	Paper Out light on	Paper source setting in printer software is different from control panel.	Make sure the right paper is loaded and the paper source setting is the same on the control panel and printer software.
PAPER JAM	Paper Out light flashing	Paper has jammed in the printer.	Remove the jammed paper.
PAPER NOT CUT	Paper Out light flashing	Roll paper was not cut completely.	Cut the paper manually, then remove the cut paper from the printer and reload it.
		Cut paper did not fall off.	Remove the cut paper from the printer. Reload paper.
PAPER NOT STRAIGHT	Paper Out light flashing	Paper was fed into the printer at an angle.	Reload paper, making sure the edges are straight and aligned with the vertical row of holes at the paper exit.
PAPER OUT	Paper Out light on	No paper is loaded.	Load paper.
		Paper ran out.	Remove any printouts or paper remaining in the printer and load more paper.
			If the message appears during a print job, reset the printer by pressing the Pause button for 3 seconds. Then load paper and resend the job.

Error messages (continued)

Message	Light	Explanation	Response
RELOAD PAPER	Paper Out light on	Paper could not be reversed into the printing position.	Remove the paper. Reload it so that the bottom edge is straight and aligned with the vertical row of holes at the paper exit.
		Image is too wide for the paper loaded in the printer.	Resize your image or load wider paper.
		Paper is not fully ejected.	Cut the paper at the paper insertion slot, then reload paper.
		PAPER NOT CUT error was cleared.	Reload paper.
UNABLE TO PRINT	—	You tried to print while an error condition was present or the ink compartment cover was open.	After 3 seconds the message disappears. Press the Pause button to exit SelecType mode. If the message appears again, clear the error before you print.
NOZZLE CHECK ERROR	—	The nozzle check pattern did not print correctly.	Press and hold the Cleaning button on the control panel for at least 3 seconds to begin cleaning the print head.
COMMAND ERROR	—	You're using the wrong printer driver.	Make sure you installed the correct driver for your printer: Stylus Pro 10600DYE driver for Photographic Dye Stylus Pro 106000CF driver for Archival ink Stylus Pro 10600UC driver for UltraChrome ink
		Damaged data was sent to the printer.	To clear the data, press the printer's Power button to turn the printer off. Wait for about a minute, then turn the printer on again.
MAINTENANCE REQ.	—	A printer part will need to be replaced soon.	Note the error number and contact EPSON.
MAINTENANCE REQ 0100	—	The waste ink system is almost full.	Call an authorized EPSON servicer to schedule replacement of the waste ink system.
SERVICE REQ.	All lights flashing	An error has occurred.	Note the error number, and turn the printer off and then on. If the message remains, contact EPSON.
SERVICE REQ. 00000100	All lights flashing	The waste ink system is full.	Contact EPSON to have the waste ink system replaced.

Printing a Status Check

The status check shows the amount of ink remaining in each cartridge, the page count, and the status of various printer parts.

NOTE: The user can replace the ink cartridges and cutter blade. Other parts need to be replaced by an authorized EPSON service technician.

Follow these steps to print the status check:

1. Load a sheet of letter-size paper in the printer. (You can print on roll paper, but you will use more paper.)
2. Press the **SelecType** button on the control panel until you see **TEST PRINT MENU** on the display.

3. Press the **Item** button until you see **STATUS CHECK=PRINT**.
4. Press the **Enter** button. The status check sheet prints.

The amount of ink left or the component life is indicated as follows:

E***F** = full (or full life remaining)
E** F** = 3/4 full (or 3/4 life remaining)
E* F** = 1/2 full (or 1/2 life remaining)
E F** = 1/4 full (or 1/4 life remaining)
E* F = nearly empty (or service life near end)
E F = empty (or service life ended)

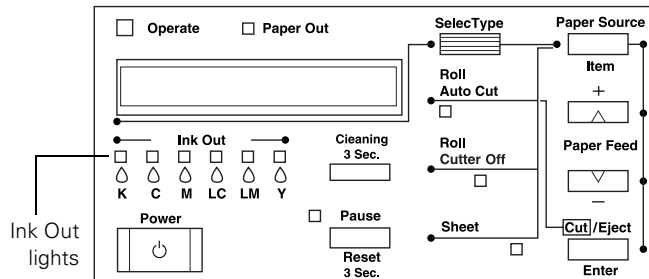
5. Press the **SelecType** button to exit the Test Print menu.

Replacing Ink Cartridges

See page 3 for ink cartridge part numbers.

Checking Ink Levels

When one of the Ink Out lights is flashing (and INK LOW is displayed on the control panel), the corresponding cartridge is almost out of ink. Make sure you have a replacement cartridge.

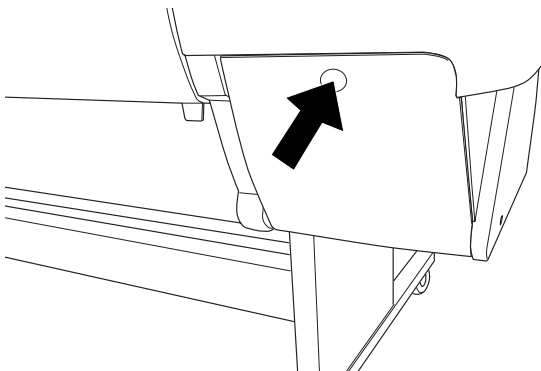


When the light stays on and INK OUT is displayed, the cartridge is empty. You must replace it before you can continue printing.

Replacing a Cartridge

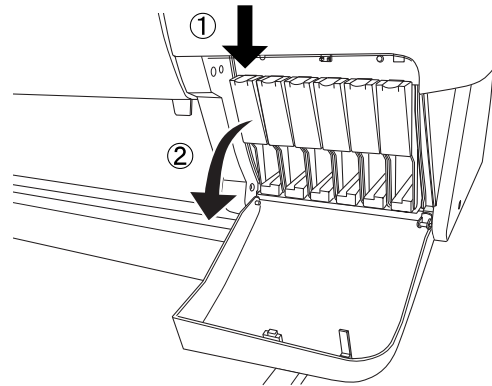
Before you start, make sure the printer is turned on. Then follow these steps:

1. Note the color of the Ink Out light that is on or flashing. This is the cartridge that you need to replace.
2. Push the indentation on the ink compartment cover to release the lock and open the cover. INK COMPART. OPEN appears on the display.

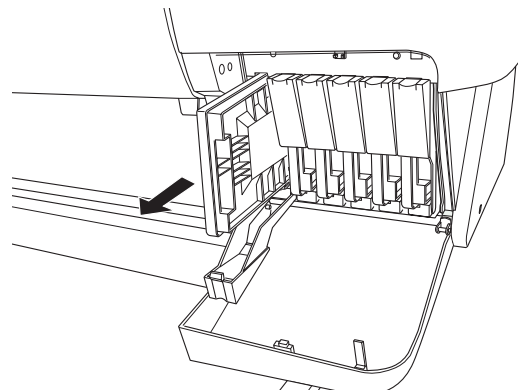


6. Hold the ink cartridge with the arrow mark on the left side and pointing toward the printer. Then insert the ink cartridge into the slot. Don't force the cartridge.

3. Locate the slot containing the empty ink cartridge (corresponding to the INK OUT light). Press down on the top of the clamp and pull it forward.

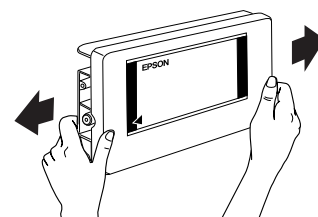


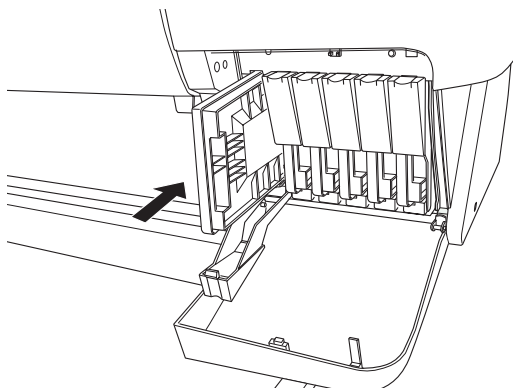
4. Carefully pull the empty cartridge straight out of the printer.



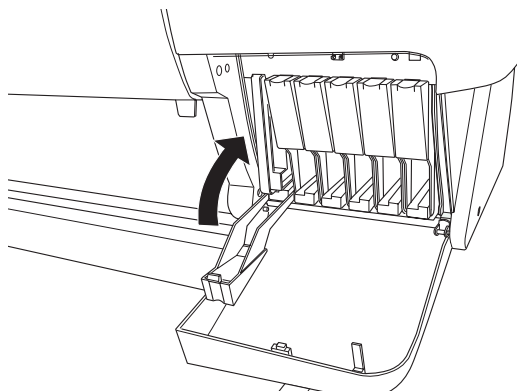
5. Make sure the replacement cartridge is the correct color, and remove it from its package.

If you're using Archival ink or UltraChrome ink, shake the cartridge gently before installing it.





7. Push the cartridge clamp back up. Make sure the corresponding Ink Out light goes off. Then close the ink compartment cover.



Switching Between Black Ink Modes

If your printer uses EPSON UltraChrome ink, you can switch between black ink modes to optimize your black ink density:

Black ink modes

Mode	Image and paper type
Photo Black Mode	For printing photographic images on all media types. Optimized for traditional photographic and ink jet-coated papers, such as EPSON Premium Luster Photo Paper, Photo Semigloss Paper, or Premium Semimatte Photo Paper.
Matte Black Mode	Optimized for printing photographic images on matte or plain papers, such as EPSON Enhanced Matte Paper, Smooth and Textured Fine Art Paper, and Somerset Velvet for EPSON, when the highest level of photographic quality is desired.

Replacing the Black Ink Cartridge

Before starting, make sure you have:

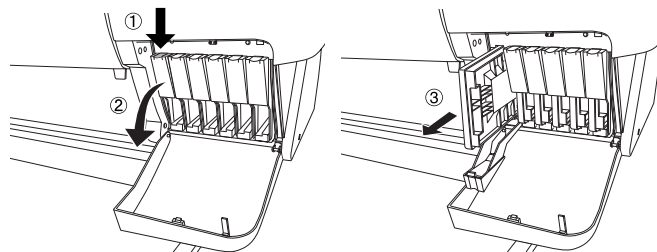
- ❑ the draining cartridge that came with your printer
- ❑ the replacement black ink cartridge you plan to install

Follow these steps to switch black ink modes:

1. Turn on the printer and wait until **READY** is displayed on the control panel.
2. Make sure that no **Ink Out** lights are on or flashing. If any cartridges are low on ink, you have to replace them first.
3. Press the **SelecType** button until **MAINTENANCE MENU** is displayed on the control panel.
4. Press the **Item** button until you see **BK INK CHANGE=EXEC**, then press **Enter**.

The control panel displays **OPEN INK COVER**.

5. Open the ink compartment cover and remove the black ink cartridge. (Press down on the top of the cartridge clamp to release it, then pull out the cartridge.)



6. Insert the draining cartridge into the black ink slot. Close the ink cartridge clamp, then close the cover.

The printer begins draining the ink, and you see a message on the control panel indicating the progress.

7. Once draining is complete, you see the message **OPEN INK COVER**. Open the ink compartment cover and remove the draining cartridge.
8. When you see the message **INSERT BK INK** on the control panel, insert the new (replacement) black ink cartridge. Then close the ink compartment cover.

You see a message on the control panel indicating the progress of the black ink charging. When done, **K: EPSON GENUINE INK** is displayed.

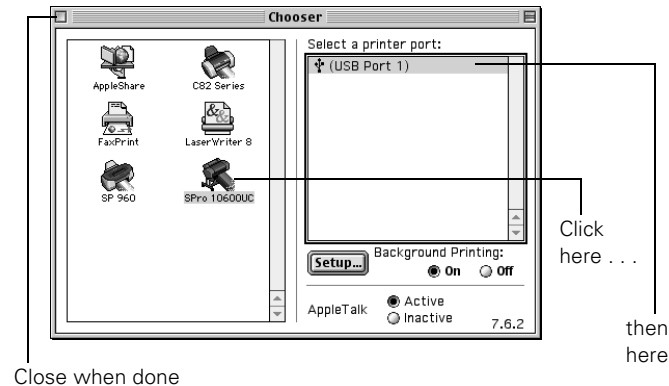
Continue on to the next section to update your printer driver software.

Updating the Driver

Once you have switched black ink cartridges, you need to update the driver (printer software) so that it knows which black ink mode you're using. Follow these steps:

Macintosh Users

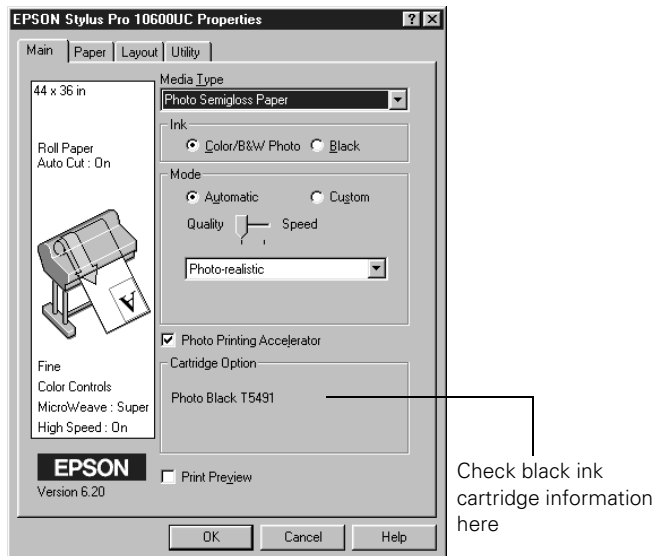
1. Open the Chooser from the Apple menu.
2. Click the printer icon and port, as shown.



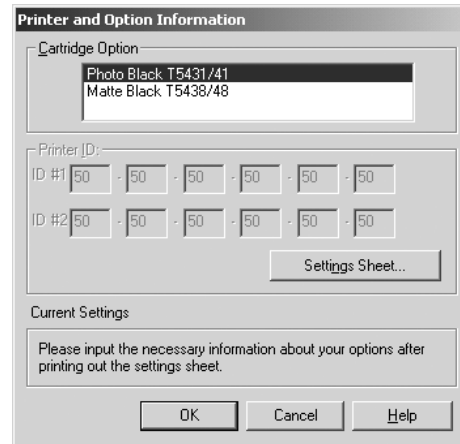
3. Close the Chooser. This completes the black ink replacement.

Windows Users

1. Click the **Main** tab in your printer software and make sure the correct ink cartridge information is displayed, as shown below.



2. If necessary, set the information manually. Click the **Utility** tab, then click the **Printer and Option Information** button. Select the appropriate ink cartridge option, as shown below.



3. Click **OK** to exit the printer software. This completes the black ink replacement.

Improving Print Quality

Banding and incorrect or missing colors can be caused by several problems, such as clogged print head nozzles or a misaligned print head. Poor print quality can also be caused by using a paper that is not defined in the EPSON printer driver or in a third-party RIP.

Here are some common solutions for print quality problems:

- ☐ Run a nozzle check and cleaning cycle. See page 13 for instructions.
- ☐ Align the print head, as described on page 14.
- ☐ To eliminate banding, choose 1440 dpi as your resolution.
- ☐ If you're using cut sheet media, make sure the printable side (usually the whiter side) is face up.
- ☐ Check the **Ink Out** lights to see if you are low on ink. Replace any low ink cartridges, as described on page 10.
- ☐ Make sure the **Media Type** setting is correct for the media you're printing on.
- ☐ Deselect the **High Speed** setting (for bi-directional printing) in your printer driver software.

If your paper type is not defined in your printer software, or if you're using non-EPSON media, you can use the printer's Paper Configuration menu to create a custom paper type. You can access these settings using the **SelecType** button on the

printer's control panel or (if your printer uses UltraChrome ink) from the EPSON printer driver software:

- ❑ Change the **Paper Feed Adjustment** to reduce banding.
- ❑ Decrease the **Paper Suction** level if you're printing on thin paper that's getting saturated with ink.
- ❑ If printing occurs faster than your computer can send data, the printer may pause, letting ink dry and causing a discolored band when the job resumes. Increase the **Drying Time** to ensure that ink blends more smoothly.
- ❑ Decrease the ink saturation level using the **Color Density** setting (UltraChrome printers only).
- ❑ If your paper is of unusual thickness, reset the platen gap and profile your paper's thickness; if you have an UltraChrome printer and you know the paper's thickness, you can enter it directly from the EPSON printer driver.

For additional guidelines, see the *Printer Guide* or technical support bulletins posted on the EPSON web site.

Running a Nozzle Check and Cleaning Cycle

If your printed image is unexpectedly light or faint, has horizontal bands, shows incorrect colors, or is missing dots, you may need to run a cleaning cycle. This unclogs the print head nozzles so they can deliver ink properly.

The cleaning cycle uses ink, so you should run it only if print quality declines. To determine if a cleaning cycle is needed, print a nozzle check (below). You should also print a nozzle check after cleaning to see if the cleaning was successful.

Printing a Nozzle Check Pattern

1. Make sure the printer is turned on but not printing, and letter-size paper is loaded. (You can use either plain paper or coated ink jet paper. If you use roll paper or larger-size sheets, you will use extra paper.)
2. Press the **SelecType** button on the control panel until you see **TEST PRINT MENU** on the display.
3. Press the **Item** button. You see **NOZZLE CHECK=PRINT**.
4. Press the **Enter** button. The nozzle check prints as shown.

If the lines in the check pattern are complete, with no gaps or misplaced dots, the print head doesn't need cleaning. (You may need to use an eye loupe to check the pattern.)



If any dots are out of place or missing from the pattern, as shown below, clean the print head as described in the next section.



Cleaning the Print Head

Follow these steps to run the cleaning cycle:

1. Make sure that all of the \triangle **Ink Out** lights on the printer's control panel are off.
If an \triangle **Ink Out** light is flashing or on, you need to replace the corresponding ink cartridge instead.
2. Press the **Cleaning** button and hold it for at least 3 seconds. The **Pause** light flashes as the printer cleans its print head. The cleaning cycle takes about 60 seconds and does not use any paper.
3. When the **Pause** light goes off, print the nozzle check pattern again to confirm that the head is clean.

You may need to run the cleaning cycle several times until the nozzle check pattern is okay. For effective cleaning, always print a nozzle check pattern between cycles.

If the lines in the pattern are still broken after several cleaning cycles, or if any dots remain out of place, turn the printer off and leave it overnight, then clean the print head again the following morning. If you still see no improvement, try an SSCL cleaning cycle as described below (Archival and UltraChrome ink printers only).

Performing an SSCL Cleaning Cycle

The SSCL cleaning cycle is available on Archival and UltraChrome ink printers only. It performs a more intensive cleaning than the standard cleaning cycle. In most cases, you won't have to use it. Before performing an SSCL cleaning, make sure you have already run the standard cleaning as described above to determine that the SSCL cleaning is really needed.

1. Make sure all of the \triangle **Ink Out** lights on the printer's control panel are off.
If an \triangle **Ink Out** light is flashing or on, you need to replace the corresponding ink cartridge.
2. Turn off the printer.
3. Hold down the **Pause** button while pressing the \odot **Power** button to turn on the printer.

- Examine the last nozzle check pattern you printed to identify which color ink nozzles need cleaning. Then press the **Item** button until you see the SSCL option for the color ink nozzle(s) you need to clean:

SSCL B/C=EXEC to clean the black and cyan nozzles
 SSCL LM/LC=EXEC to clean the light magenta and light cyan nozzles
 SSCL M/Y=EXEC to clean the magenta and yellow nozzles

- Press **Enter**. Cleaning takes about 15 minutes to complete.
- When the cleaning is complete, press the **Power** button to turn off the printer. Then turn the power back on and perform a nozzle check (page 13) to verify that the nozzles are clean. You may have to repeat the SSCL cleaning cycle to fully solve the problem.

If after repeated cleanings the same color nozzles continue to be clogged, the print head may need replacement. Contact EPSON for assistance.

Aligning the Print Head

If banding appears on your prints, or vertical lines are not straight, you need to align the print head. Although you can align the print head using the printer software, it's best to do this from the control panel. This aligns the print head for all modes and resolutions.

If you haven't already done so, it's a good idea to run a nozzle check before aligning the print head (page 13). This ensures that the print head alignment patterns print correctly.

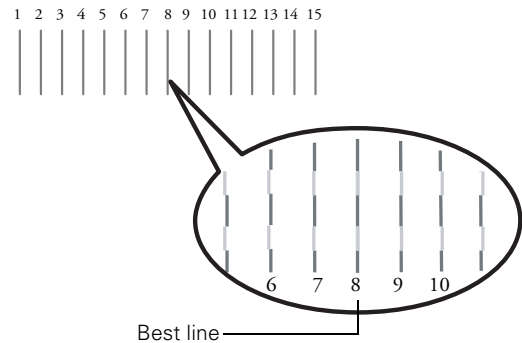
- Turn on the printer.
- Load 44-inch wide roll paper in the printer. Use coated ink jet paper, such as the roll of Doubleweight Matte Paper that came with the printer. For best results, use the paper you'll be printing on to perform the alignment—especially if it's non-EPSON paper or of unusual thickness.
- Press the **SelecType** button until **HEAD ALIGNMENT MENU** is displayed.
- Press the **Item** button. **PAPER THICK=STD** appears on the display.

If you're using EPSON paper, leave this setting on **STD**.

If you're using other media, enter the thickness of the paper (up to 1.6 mm) in 0.1-mm increments by pressing the **+** or **-** button.

- Press the **Enter** button. You see **ALIGNMENT=Bi-D LC** on the display.
- Press the **+** button so that **ALIGNMENT=Uni-D** appears.

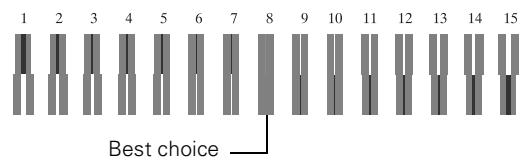
- Press the **Enter** button to print the alignment pattern.
- Examine the first row (marked **#1 C**). You see a series of patterns similar to the one below across the width of the paper. Use an eye loupe to determine which line is the best. (Each line is composed of two overlapping colors. Look for the line in which the colors overlap the most evenly. In the example below, number 8 is the best line.)



- Look at the other patterns in the first row to see if the same number is consistently the best line. If not, determine which number is generally the best.

Ideally, number 8 (± 1) should be the best line in all of the printed patterns in all rows. If it is, you can press **Pause** to exit the adjustment early.

- Check the control panel display. It shows **#1 C=8**, which means that number 8 is the current setting for row **#1 C**. If you need to change the setting, use the **+** or **-** button to select the best line for that row. Then press the **Enter** button to register the setting.
- Repeat step 8 through 10 for each additional row.
- When done, press the **Pause** button to exit the alignment.
- If you had to make changes to any of the settings, you should reprint the alignment pattern to verify that number 8 (± 1) shows the best line in all rows. You may have to repeat the adjustment more than once for best results.
- When done performing the adjustment in Uni-D (uni-directional) mode, as described above, you should repeat it in Bi-D mode (select **ALIGNMENT=Bi-D ALL**). The process is the same, but the printed pattern is different:



To select the best pattern, use an eye loupe to determine which block has the smallest gaps. In the example shown above, number 8 has the smallest gaps.

Using and Replacing the Cutter Blade

To use the printer's built-in cutter, select the appropriate option from the control panel:

- ☐ Roll Auto Cut to cut each page automatically
- ☐ Roll Cutter Off if you're printing on heavy media that can damage or prematurely wear out the cutter

Do not use the printer's built-in cutter when printing with these EPSON papers or other heavy media (thicker than 10 mil):

- ☐ Enhanced Matte Posterboard
- ☐ Posterboard Semigloss
- ☐ Smooth Fine Art Paper
- ☐ Textured Fine Art Paper
- ☐ Velvet Fine Art Paper
- ☐ Adhesive Vinyl
- ☐ Somerset Velvet for EPSON Fine Art Paper
- ☐ Canvas
- ☐ Backlight Film

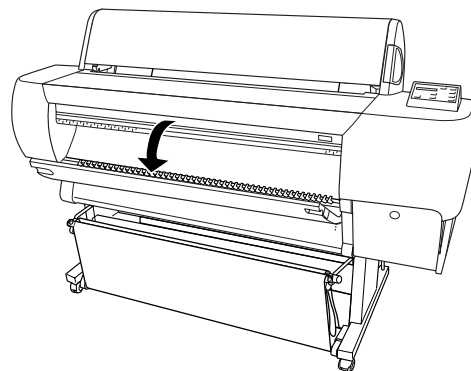
When done printing on heavy media, remove your printout using scissors or the optional Manual Media Cutting System (part no. C815182).

Replacing the Blade

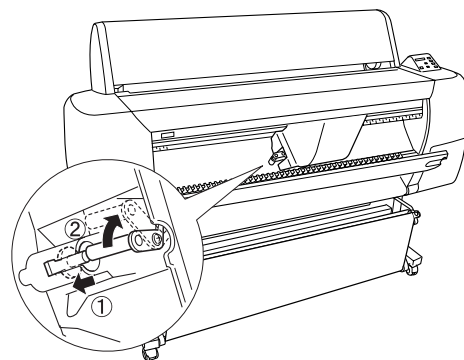
If you notice that paper isn't cut cleanly, the cutter blade may need to be replaced. You can check the status of the cutter by printing a status check sheet (see page 9).

1. Make sure that the printer is on and the front cover is closed.
2. Press the **SelecType** button until **MAINTENANCE MENU** appears on the display.
3. Press the **Item** button until **CUT. REPLACE=EXEC.** appears on the display.
4. Press the **Enter** button. The print head moves to the cutter replacement position.

5. When **OPEN LOWER COVER** appears on the display, open the lower cover.

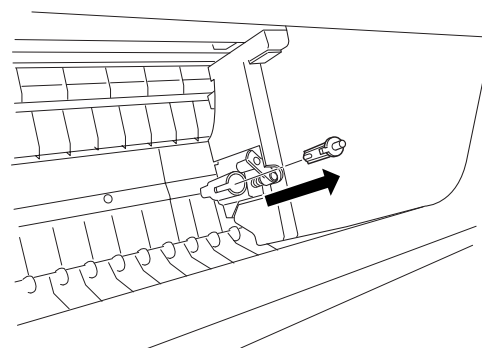


6. To release the cutter blade, push down on its white side pin, then turn the black latch upward to the right.

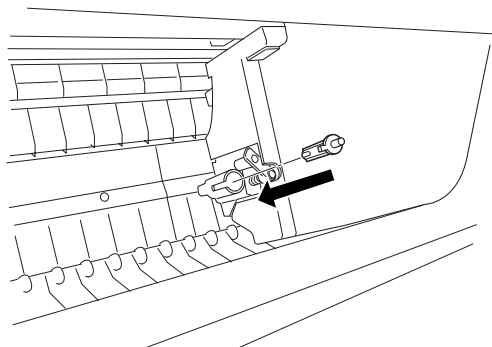


7. Slowly take your finger off the side pin, then remove the cutter blade.

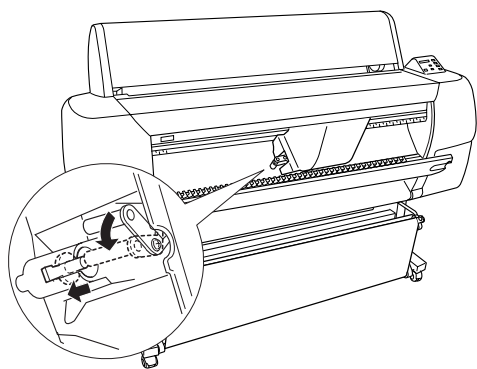
CAUTION: Be careful not to let the cutter or the spring fly out of the casing.



8. Insert the new cutter.



9. Push down on the cutter's side pin while turning the latch to the left.



10. Close the lower cover. The print head returns to the home position.

Replacing the Maintenance Tank

When the maintenance tank is nearly full, the printer displays the following message on the control panel:

MAINTENANCE REQ. 0100

You should call to schedule service at this point. When the waste ink system is at full capacity, the printer stops and displays the following message:

SERVICE REQ. 00000100

Approximately every two years of normal usage (25% duty cycle) or after 20,000 B0-size prints, you should have your authorized EPSON servicer replace the waste ink system. This is necessary to prevent damage to the print head and maintain print quality. Parts and labor for this service are not covered under the terms of the limited warranty.

You can monitor the status of the waste ink system by printing the status check sheet (see page 9); a low value (or a value near Empty) indicates that the pad is nearing the end of its service life.

Related Documentation

CPD-15012	EPSON Stylus Pro 10600 Printer Guide
CPD-15013	EPSON Stylus Pro 10600 Quick Reference Guide
CPD-15014	EPSON Stylus Pro 10600 CD-ROM with electronic <i>Reference Guide</i>
PL-SP10600	Parts Price List