

Installing RIP Station Support for Windows® 2000

Before You Begin:

- Read through these instructions and, if possible, print a copy so you have it with you as you install the software.
- To use this driver you must have EFI® Fiery® Rip server station configured with your printer.
- These instructions assume you have a "clean" installation of Microsoft® Windows 2000, not an upgrade. If your Windows 2000 installation is an upgrade, the printer driver may not install correctly.
- Close any applications and windows before you begin the installation.

Installation Instructions

For these printers, download the PPD file for Windows 2000 from <http://prographics.epson.com/support>, and then follow the instructions below to install them.

Stylus Pro 5000 version 1.1

Stylus Pro 5000 version 1.3

Stylus Pro 9000 version 1.3

This document contains both Parallel Connection and Network Connection installation instructions.

Fiery RIP® Direct Parallel Connection

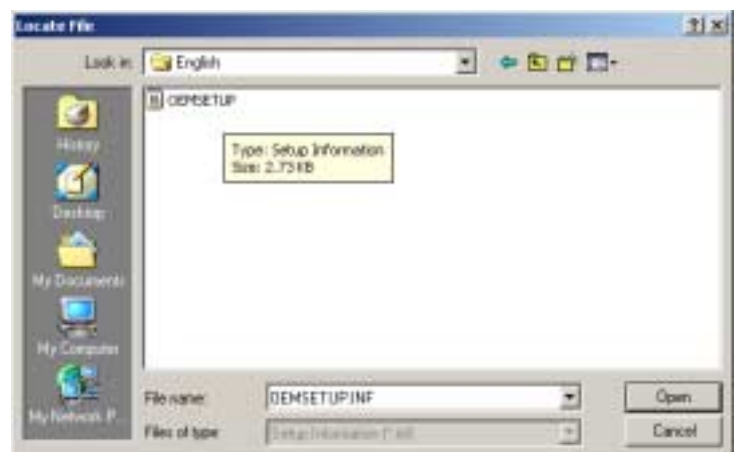
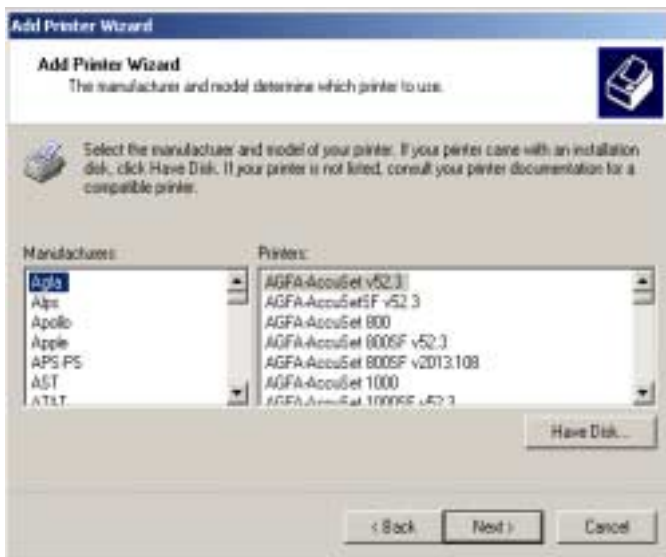
1. Make sure your printer is on and attached to your computer via the Fiery® Rip server station. The printer must be attached to the parallel port connection on the Fiery® Rip station. The Fiery® Rip station should be connected to the computer via the parallel bi-directional converter.
2. To start the installation process click on the **Start** button on the Windows task bar, and then navigate up to the **Settings>Printers** task option.
3. Double click on the **Add Printer** icon and click on next to continue.



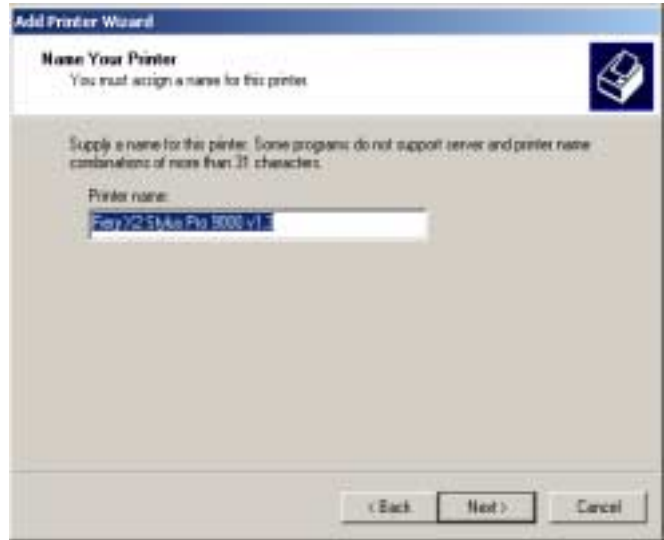
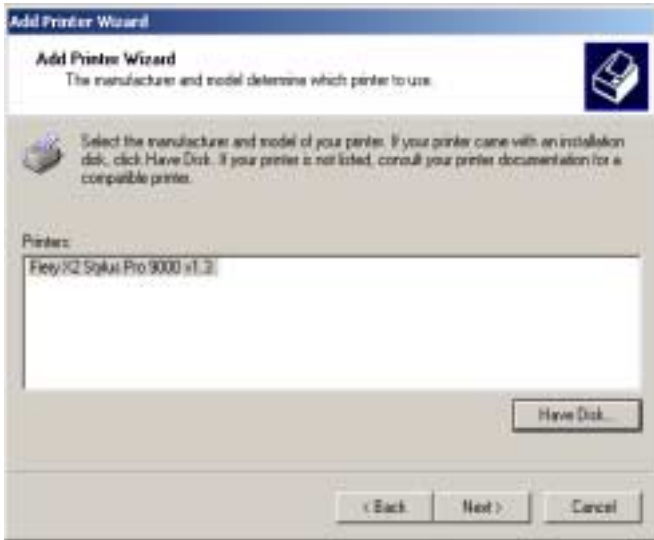
4. Once there you will have a choice of a Local Printer or Network Printer. Select Local printer then click next. Select desired port and click on next.



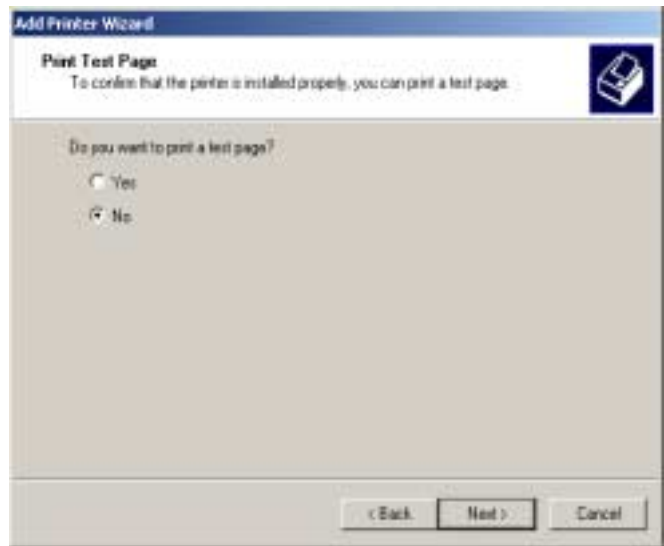
5. Select the Have Disk option then browse to the “OEMSETUP” file.



6. After selecting the OEM file the new printer driver should show up as your selected printer. On the next screen, you may customize or leave the default name of the printer.



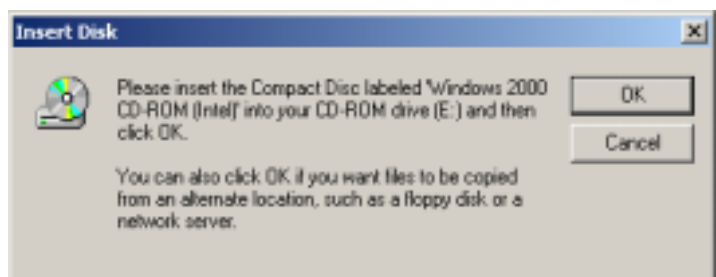
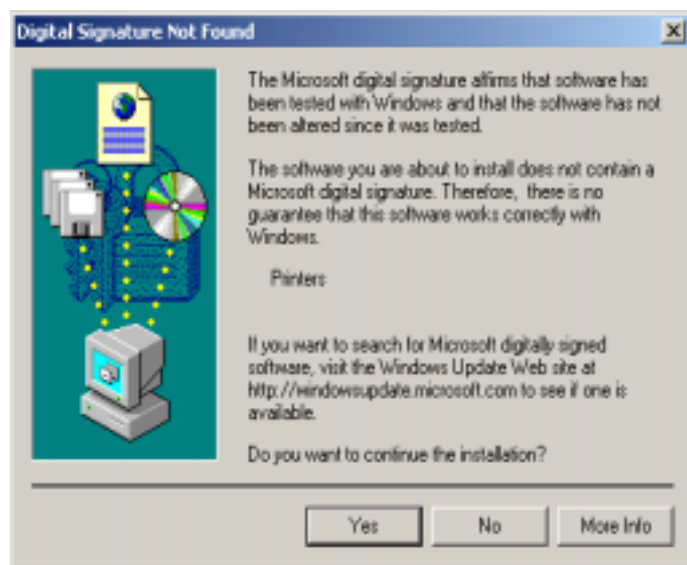
7. The next two screens are optional settings where you may choose to share the printer and print a test page.



8. Next, a confirmation window will appear with all your settings. Click on next to continue.

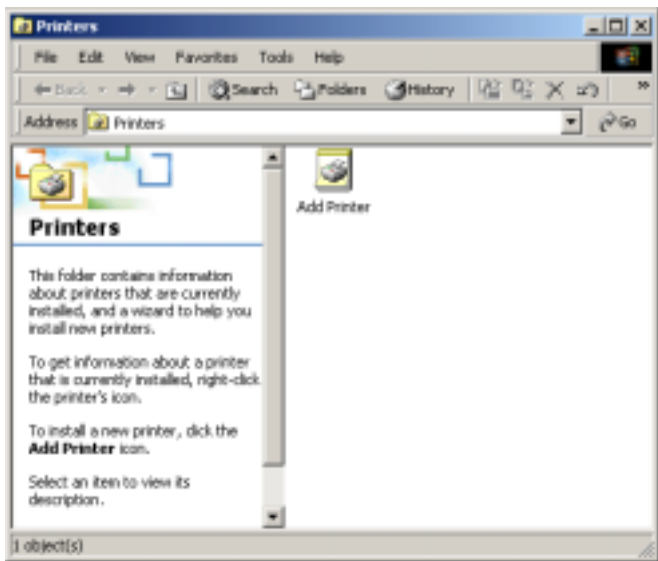


9. The Microsoft digital Signature window will appear as shown. Select Yes and have your Windows 2000 CD available. Windows is now ready to copy the necessary files.



Fiery RIP® Network Connection

- 1. Make sure your printer is on and attached to your computer via the Fiery® Rip server station. The printer should be attached to the Fiery® Rip station via a parallel connection, and the Fiery® Rip station should be connected to the network. To start the installation process click on the **Start** button on the Windows task bar, and then navigate up to the **Settings>Printers** task option.
- 2. Double click on the **Add Printer** icon and click on next to continue.



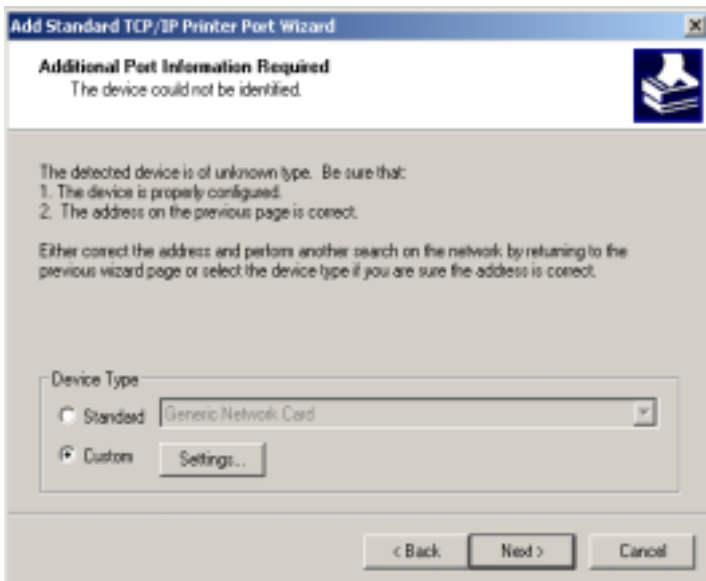
- 3. Once there you will have a choice of a **Local Printer** or **Network Printer**. Select **Local Printer** and uncheck “Automatically detect and install my plug and play printer” option then click next. Select “**Create a new port type**” then specify **Standard TCP/IP Port** in the submenu and click on next.



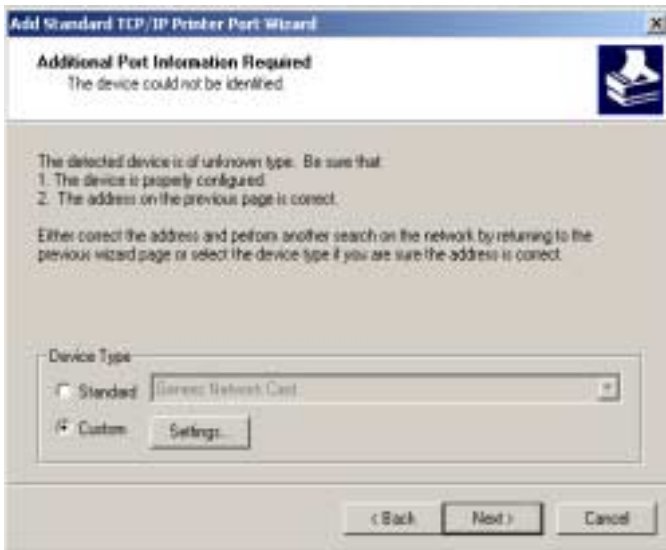
4. The TCP/IP Printer Port Wizard will walk you through setup and configuration of the port, click on next. In the first field, enter the unit's IP address. The Port Name will automatically be entered in for you. Click next to continue.



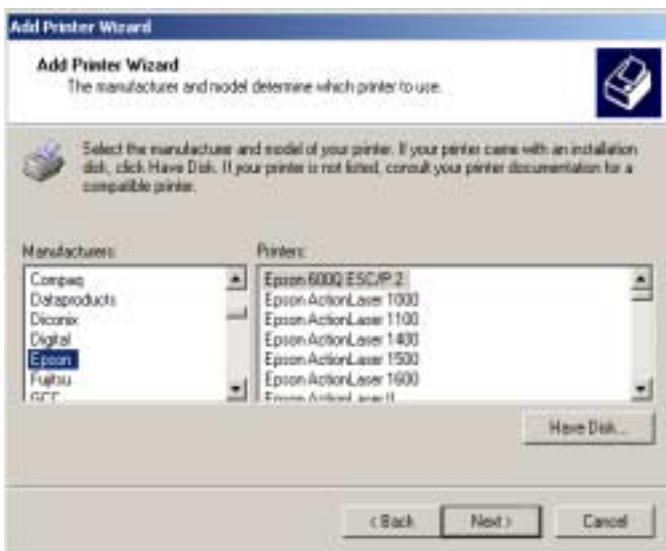
5. Under the Device Type click on the Custom button then select settings. The Port Settings window will have your device information. Under Protocol select LPR and under the LPR Settings type "print_ProXXXX" for the queue name, where X's represents your printer # such as 9000 or 5000. Next, be sure to enable *LPR Byte Counting*. Without this selected the printer driver will not print!



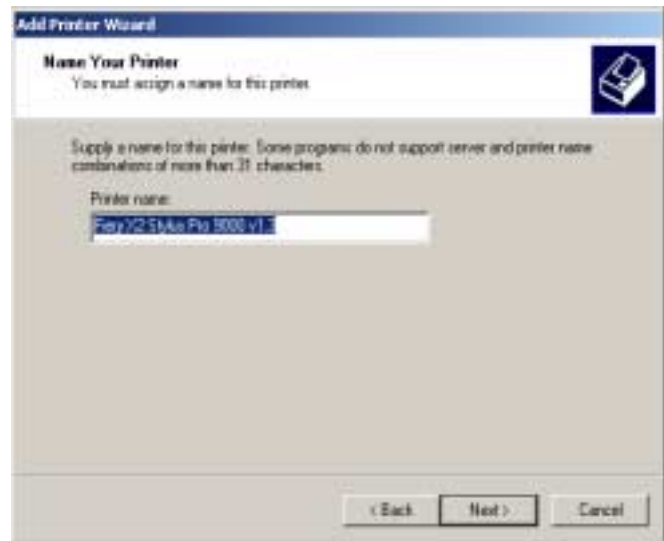
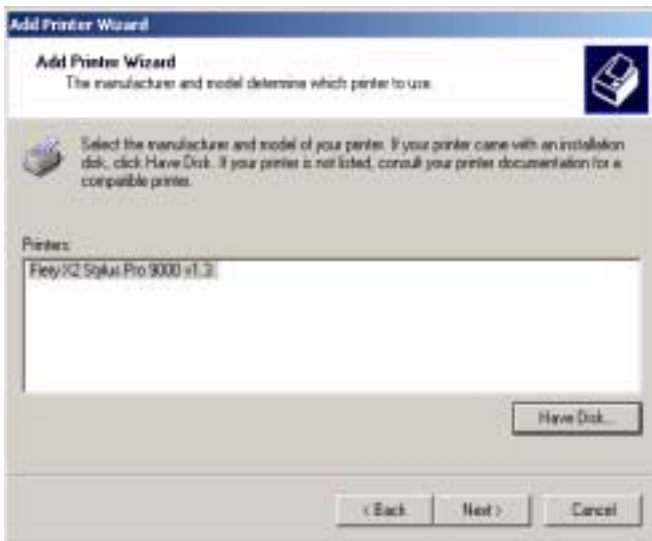
6. After completing the above step and selecting OK, the setup will take you back to the previous window. Select next and you should get a confirmation window with the network port information. Click on finish to complete the network port setup.



7. Now you are ready to install the driver files. The Add Printer Wizard will guide you through the reset of the installation. On the next screen select **Have Disk** option and navigate to the English folder and select the “OEMSETUP” file. Click on Open and then on OK to continue.



10. After selecting the OEM file the new printer driver should show up as your selected printer. On the next screen, you may customize or leave the default name of the printer.



11. At this time leave Printer Sharing settings at default; if necessary, the settings can be changed later. The Printer Test Page screen is optional, click next to continue.



12. A confirmation window will appear with all your settings. Click on **Finish** to continue then click **Yes** at the Microsoft Digital Signature window to complete the installation.

