

EPSON®



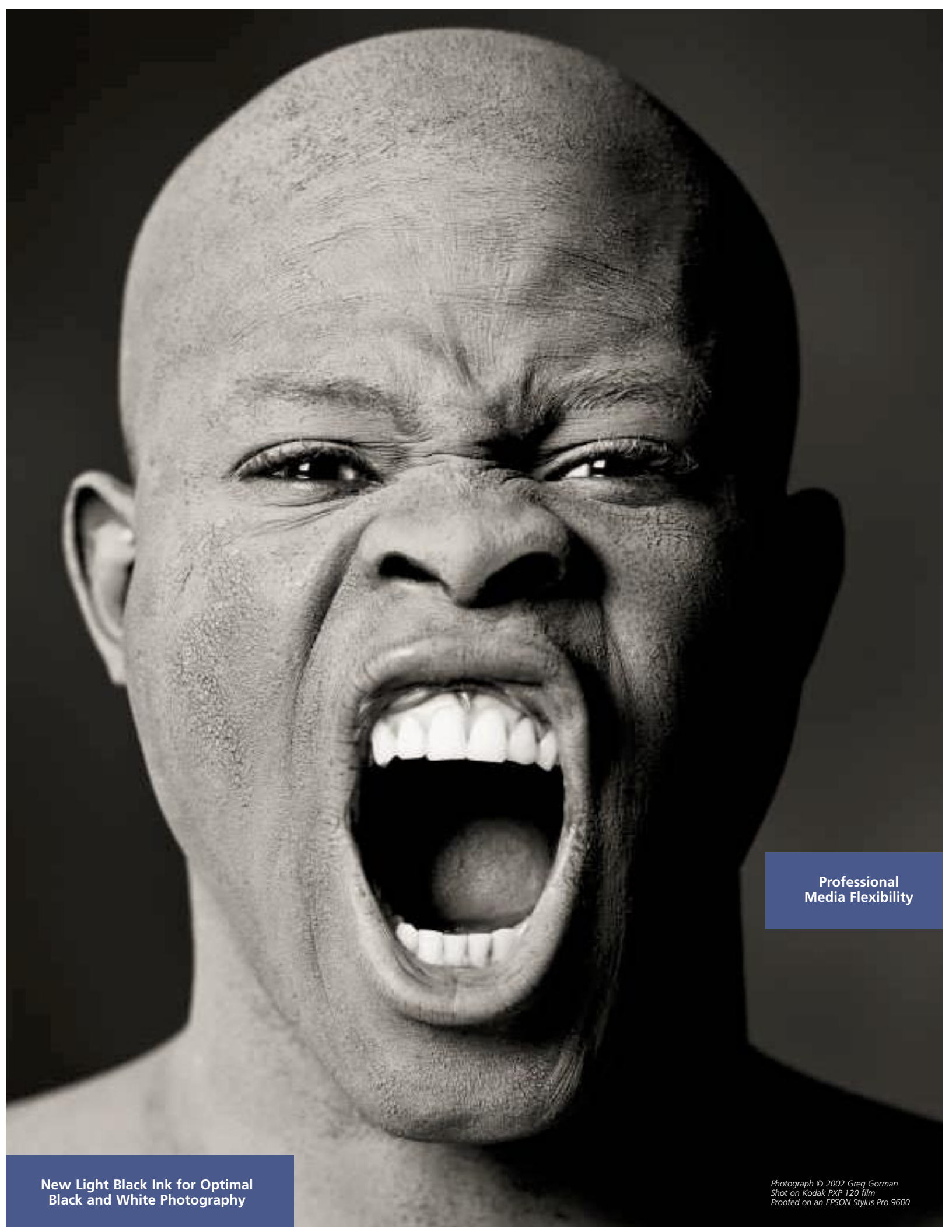
EPSON Stylus® Pro 7600 & 9600

Grand visions printed on a grand scale.



True 2880 x 1440 dpi
Using 4 Picoliter Droplets

New 7-Color
EPSON UltraChrome™ Inks



Professional
Media Flexibility

New Light Black Ink for Optimal
Black and White Photography

*Photograph © 2002 Greg Gorman
Shot on Kodak PXP 120 film
Proofed on an EPSON Stylus Pro 9600*

The most desirable photographic printers ever produced by Epson.

Designed in collaboration with some of the world's best-known photographers and printmakers, the EPSON Stylus Pro 7600 and EPSON Stylus Pro 9600 printers incorporate technologies that have never before been available to large format printing professionals.

Representing advancements in ink, print head and print engine design, these next-generation, professional level 24-inch (SP7600) and 44-inch (SP9600) printers will produce some of the world's most exciting photographic prints.

EPSON UltraChrome Ink – a true milestone in pigmented ink technology – can produce color prints with a color gamut approaching today's standard dye ink technologies. And for the first time, produce professional level black and white prints capable of pleasing the most demanding black and white photographers.

To take full advantage of this remarkable ink technology, Epson has developed a brand new Micro Piezo DX3™ print head that can produce an astonishing resolution of 2880 x 1440 dpi.

Designed specifically for 7-color printing, Epson's most advanced print head delivers a level of photographic quality that must be seen to be believed.

A brand new print engine design capable of handling virtually any media type either 24-inch or 44-inch wide also incorporates innovative ideas that include true BorderFree™ printing, intelligent high-capacity ink systems, easy loading ink and media, and fast print speeds.

Backed by one of the most comprehensive warranty programs in the industry, the EPSON Stylus Pro 7600 and 9600 come with toll-free technical support Monday through Saturday, and usually next-business-day on-site service for a year. So should you need us, we'll be there.

Epson has once again set the standard for professional level photographic printing. Never before have creative professionals had such a powerful tool allowing them to produce their vision without compromise.

Whether for your own enjoyment or for resale, photographic prints produced by this breakthrough technology will forever change your perception of digital printmaking.



Built-i
with Bo

Photograph © 2002 Macduff Everton
Shot on Fuji NHGII 120 film
Proofed on an EPSON Stylus Pro 7600

EPSON UltraChrome Ink Technology

All New 7-Color Pigmented Inking System

- Extremely wide color gamut rivaling EPSON Photographic Dye inks
- Produces stable, long lasting photographic prints that are of resale quality

New Light Black Ink for Superior Photographic Reproduction

- Significantly improves the printer's gray balance while eliminating color casts
- Dramatically improves the midtones and highlights for smoother photographic transitions
- Reduces the metamerism effect of pigmented ink chemistry
- Enhances the ICC profiling process for ColorSync™ workflows

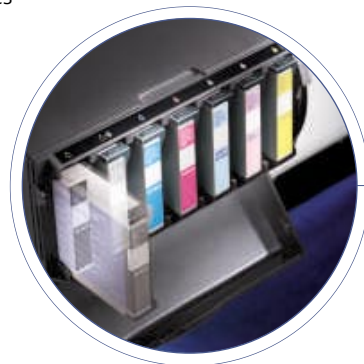
Professional Level Black and White Photographic Printing

- Produces a truly consistent image with no color crossover or color casts
- Produces neutral or toned black and white prints that satisfy a wide variety of photographers
- Depending upon media, produces a black D-max at up to 2.0

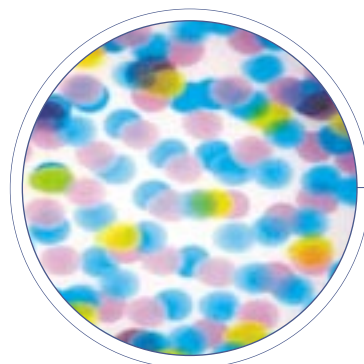
Three User-Exchangeable Black Ink Modes

By simply exchanging the black ink cartridge for another type, EPSON UltraChrome Ink technology lets you optimize your black ink density. Just choose between three different black ink modes to optimize the density for various media types and printing applications.

- **Photo Black Mode** is optimized for traditional photographic and ink jet coated media types, such as EPSON Premium Luster Photo, Photo Semi Gloss, and Premium Semimatte, to produce the highest level of photographic image quality
- **Matte Black Mode** is optimized for matte or plain medias, such as Enhanced Matte, Smooth and Textured Fine Art papers, as well as Somerset® Velvet for Epson, where the highest level of photographic image quality is desired
- **Dual Matte Black** is optimized for matte or plain media, like newsprint and plain bond paper, where print speed is favored over image quality



7-Color UltraChrome Ink
with an exclusive Light Black



True 2880 x 1440 dpi Resolution
with variable droplets as small as 4 picoliter
Microscopic Enlargement Shown Above



Auto Cutter
PaperFree Printing

Epson's Most Advanced Print Head Ever

True 2880 x 1440 dpi Resolution

- All-new print head can produce a single droplet as small as 4 picoliter
- Incredibly sharp text and line art that rivals a final press sheet
- Extremely fine blends and photographic transitions with no visible sign of ink jet technology

Variable Droplet Micro Piezo DX3 Technology

- Can produce up to three different dot sizes per print line, greatly decreasing print times while optimizing photographic quality
- Proprietary DX3 ASIC technology controls the printing process, resulting in consistent image quality and color output from print to print

EPSON Stylus Pro 7600
24" – shown with optional stand



Easy-to-use Control Panel
with backlit display and
ink level indicators

Photograph © 2002 Joe Carlson
Shot on VPL Type III (Process E-6) film
Proofed on an EPSON Stylus Pro 7600

EPSON Stylus Pro 9600
44" – stand included

Advanced Print Engine Technology

EPSON Intelligent High-Capacity Ink System

- Seven 110ml or 220ml ink cartridges (CcMmYKk) with automatic tracking of key data points such as ink levels, ink type and usage rates, for the most accurate production cost estimates
- Greatly increases productivity by replacing ink cartridges on the fly, even during the middle of a job, with no loss in image quality or production time
- EPSON Stylus Pro 9600 can use either 110ml or 220ml ink cartridge sizes at the same time to further optimize ink usage

Unsurpassed Media Flexibility

- Prints on virtually any media type, in roll or cut sheet, up to 24-inch or 44-inch wide
- Accurate automatic loading of cut sheet media up to 24-inch or 44-inch wide in a variety of weights up to 1.5mm thick
- User-adjustable Roll Media Spindle accepts either 2-inch or 3-inch media cores
- Built-in Automatic Cutting System and an optional Manual Media Cutter for cutting even the thickest of media types
- Optional Automatic Take-up Reel System for unattended production of large print runs (available on the EPSON Stylus Pro 9600 only)

True BorderFree Printing

- First ever wide-format print engine capable of printing off both left and right edges of the media, while automatically cutting top and bottom edges to produce a full-bleed print on all four sides depending on media type
- Built-in cutter will automatically cut top and bottom edges to either leave the page borders or bleed the image
- Fully trims your finished prints more accurately and safely than manual finishing techniques

High Performance Print Engine Speeds

- Depending on the print mode being used, print speeds will vary from 8 ft²/hr to a maximum of 192 ft²/hr
- Produces photographic quality printing at about 16 ft²/hr
- Produces everyday "production-quality" output at about 87 ft²/hr

Superior Connectivity

- Includes one USB (1.1 and 2.0 compatible), one ECP Parallel and one Epson Expansion Slot for installing the optional internal IEEE 1394 FireWire® or 10/100 BaseT Ethernet cards
- Enhanced EPSON Photographic Drivers for Macintosh® and Windows® allowing for complete ink density control even when color management is turned off
- Optional EFI Fiery Spark Professional 2.0 Adobe® PostScript® 3 software RIP is available for professional pre-press proofing and other graphic design workgroups
- Fully supported by most leading third-party RIPs and workflows

EPSON Professional Ink Technologies^A

Although EPSON UltraChrome Ink technology will become a new standard in professional ink systems, the EPSON Stylus Pro 7600 and 9600 are also available with EPSON Photographic Dye inks for those who have already built printing workflows using this award-winning ink technology.

- Available as a 6-color inking model (CcMmYKk), EPSON Photographic Dye Ink along with EPSON ColorLife™ Media will produce the highest level of photographic quality along with a lightfastness rating up to 26 years in color under glass^B
- Preliminary data from Wilhelm Imaging Research, Inc. indicate the lightfastness of color UltraChrome prints made by the EPSON Stylus Pro 7600 and 9600 printers will be rated up to 100 years under glass on specific Epson media. Data indicate the lightfastness of black and white UltraChrome images printed using the 7-color mode will be rated as greater than 100 years under glass on specific Epson media^B



Control Panel
display and
controls

EPSON Professional Media
for Outstanding Image Quality

EPSON Stylus Pro 7600 & 9600 Print Engine Specifications

Printing Method

7-color (CcMmYKk) EPSON UltraChrome Ink or
6-color (CcMmYKk) EPSON Photographic Dye Ink

Variable Droplet Micro Piezo DX3 drop-on-demand
ink jet technology

Nozzle Configuration

Color and Monochrome heads: 96 nozzles x 7

Black Ink Mode Configurations

UltraChrome Ink Photo-K + Light-K (standard),
Matte-K + Light-K or
Dual Matte-K
Photographic Dye Ink Dual Photo-K only

Droplet Technology

Smallest droplet size: 4 picoliter
Variable Droplet Technology can produce up to
3 different sizes per print line

Resolution

2880 x 1440 dpi; 1440 x 720 dpi; 720 x 720 dpi;
720 x 360 dpi; 360 x 360 dpi; 360 x 180 dpi

Print Engine Speed

Depending upon the print mode being used,
print engine speeds will vary from 8 ft²/hr to
a maximum of 192 ft²/hr

Produces everyday "production quality"
prints at ~87 ft²/hr

Produces better than photo lab quality
prints at ~16 ft²/hr

Acoustic Noise Level

Approximately 50 dB(A) according to ISO 7779

Printer Language

EPSON ESC/P Raster Photographic Drivers standard

External server based Adobe PostScript 3 with
optional software RIP. Also supported by most
leading third-party RIPs and workflows

Operating Systems Supported

Macintosh OS 8.5.1 through 9.x
(OS X supported via RIP)
Windows 95, 98, Me, NT 4.x, 2000, and XP

Printer Interfaces

Includes one USB (1.1 and 2.0 compatible), one ECP
Parallel and one Epson Expansion Slot for installing the
optional internal IEEE 1394 FireWire or 10/100
BaseT Ethernet cards

Dimensions

SP7600 43.3" (W) x 22" (H) x 22.5" (D)
49.2" (H) with optional printer stand
Printer weight: 96 lb
SP9600 63.9" (W) x 46.4" (H) x 28.2" (D)
Printer weight: 185 lb with stand

BorderFree Printing

Left and right borderless "bleed" printing for the
following media widths

SP7600 8", 10", 12", 14", 16", 20", 24"
SP9600 8", 10", 12", 14", 16", 20", 24", 36", 44"

Top and bottom edges can be automatically cut to any
length three different ways during printing on roll media

YOU'VE GOT TO SEE IT IN  COLOR.™

Printable Area

Maximum paper width **SP7600** – 24" **SP9600** – 44"
Left and right print margins 0 or 3mm each (0.24" total)
Maximum printable width **SP7600** – 24.16" **SP9600** – 44.16"
Maximum printable length Up to 100' (limited by roll length)
(limited by software application)

Media Handling

SP7600 Media input Single roll up to 24" width
Cut sheet size Up to 24" wide media
(auto-loading)
SP9600 Media input Single roll up to 44" width
Cut sheet size Up to 44" wide media
(auto-loading)
Media core compatibility Handles both 2" and 3" cored media
Max. roll media diameter 4" (2" core) or 6" (3" core)
Weight 12 lb bond up to 1.5 mm cardboard
Built-in media cutter Automatic or manual cutting
Optional manual media cutter Used for cutting very thick media

EPSON Intelligent Ink Cartridge

Ink cartridge size 110ml or 220ml^c
each color x 7 colors total
Ink cartridge shelf life 2 years from printed production
date or 6 months after open for
UltraChrome Ink and 2 years after
open for Photographic Dye

On cartridge I.C. chip automatically tracks several ink
usage data points for use in very accurate production
cost estimations and reporting

Lightfastness Ratings^b

EPSON UltraChrome Ink	Color:	Up to 100 years
	B&W:	Over 100 years
EPSON Photographic Dye Ink	Color:	Up to 26 years (EPSON ColorLife Media)
	B&W:	Not rated

Environmental Characteristics

Temperature operating	50° to 95° F (10° to 35° C)
Storage	-4° to 104° F (-20° to 40° C)
Humidity operating	20 to 80% relative humidity
Storage	5 to 85% relative humidity (no condensation)

Safety Approval

Safety standards UL1950, CSA 22.2 950 FDA
EMI FCC Part 15 subpart B class B,
CSA C108.8 class B

Engine Reliability

Total print volume 20,000 B0 pages at 360 x 360 dpi
Print head life 28 billion shots per nozzle
Cutter life ~2,000 times (coated media)
Maintenance parts Pump unit, flushing box,
head cleaner, cap assembly

Electrical Requirements

Voltage	120 V (100 to 240 V)
Frequency	50 to 60 Hz
Current	1.0A / 100-120V
Power consumption	Approx. 55W (operating) <15W (standby) < .7W (power off mode) Energy Star compliant

Product/Accessories

	Part Numbers SP7600	SP9600
EPSON Stylus Pro Print Engine w/ UltraChrome Ink	C472001UCM	C473001UCM
EPSON Stylus Pro Print Engine w/ Photographic Dye Ink	C472001DYE	C473001DYE
EPSON Stylus Pro Printer Stand	C12C844061	Included
EFI Fiery Spark Professional 2.0 Software RIP	C842832	C842832
Internal 10/100 BaseT Ethernet Type-B Card	C12C823912	C12C823912
Internal IEEE 1394 FireWire Type-B Card	C823722	C823722
Additional One-year EPSON Preferred Plus Service	EPP7696B1	EPP7696B1
Additional Two-year EPSON Preferred Plus Service	EPP7696B2	EPP7696B2
Automatic Take-up Reel System	Not Available	C12C815251
Replacement 44" Take-up Reel Core	Not Available	C815121
Paper Roller Spindle (Normal Tension) – 2" or 3"	C12C811161	C12C811151
Paper Roller Spindle (High Tension) – 2" or 3"	C12C811155	C12C811152
Replacement Printer Cutter Blade	C12C815241	C12C815241
Manual Media Cutting System	C12C815231	C815182
Replacement Manual Cutting Blade	C815192	C815192
Replacement Ink Maintenance Tank	C12C890071	C12C890071

EPSON Ink Technology

SP7600 & SP9600 (110ml)	Photo Dye Ink	UltraChrome Ink
Photo Black ink cartridge	T545100	T543100
Cyan ink cartridge	T545200	T543200
Magenta ink cartridge	T545300	T543300
Yellow ink cartridge	T545400	T543400
Light Cyan ink cartridge	T545500	T543500
Light Magenta ink cartridge	T545600	T543600
Light Black ink cartridge	Not Available	T543700
Matte Black ink cartridge	Not Available	T543800

EPSON Ink Technology

SP9600 (220ml) ^c	Photo Dye Ink	UltraChrome Ink
Photo Black ink cartridge	Not Available	T544100
Cyan ink cartridge	Not Available	T544200
Magenta ink cartridge	Not Available	T544300
Yellow ink cartridge	Not Available	T544400
Light Cyan ink cartridge	Not Available	T544500
Light Magenta ink cartridge	Not Available	T544600
Light Black ink cartridge	Not Available	T544700
Matte Black ink cartridge	Not Available	T544800

A The user selects the desired ink version at time of purchase.

B Ink lightfastness rating based on accelerated testing of prints on specialty media, displayed indoors,
under glass. Actual print stability will vary according to media, printed image, display conditions,
light intensity, humidity, and atmospheric conditions. Epson does not guarantee longevity of prints.
For maximum print life, display all prints under glass or lamination or properly store them. Visit
www.wilhelm-research.com for the latest information.

C 220ml ink cartridges available for the EPSON Stylus Pro 9600 only. 110ml ink cartridges come
standard on the EPSON Stylus Pro 7600 and 9600.

EPSON America, Inc.: 3840 Kilroy Airport Way, Long Beach, CA 90806

EPSON Canada, Inc.: 3771 Victoria Park Avenue, Toronto, Ontario M1W 3Z5

EPSON Latin America Inc.: 6303 Blue Lagoon Drive, Miami, FL 33126

Internet Website: www.prographics.epson.com



Specifications and terms are subject to change without notice. EPSON, EPSON Stylus and Micro Piezo are registered
trademarks of Seiko Epson Corporation. UltraChrome, EPSON Photographic Dye, ColorLife, BorderFree and DX3 are
trademarks of Epson America, Inc. All other product brand names are trademarks and/or registered trademarks of
their respective companies. Epson disclaims any and all rights in these marks.

© Epson America, Inc. 2002. CPD-13760 35K 4/02 RICE

Printed on Recycled Paper 