



Epson Stylus® Pro 7900/9900

Network Guide

Copyright and Trademarks

No part of this publication may be reproduced, stored in a retrieval system, or transmitted in any form or by any means, mechanical, photocopying, recording, or otherwise, without the prior written permission of Seiko Epson Corporation. No patent liability is assumed with respect to the use of the information contained herein. Neither is any liability assumed for damages resulting from the use of the information contained herein.

Neither Seiko Epson Corporation nor its affiliates shall be liable to the purchaser of this product or third parties for damages, losses, costs, or expenses incurred by purchaser or third parties as a result of: accident, misuse, or abuse of this product or unauthorized modifications, repairs, or alterations to this product, or (excluding the U.S.) failure to strictly comply with Seiko Epson Corporation's operating and maintenance instructions.

Seiko Epson Corporation and its affiliates shall not be liable against any damages or problems arising from the use of any options or any consumable products other than those designated as Original Epson Products or Epson Approved Products by Seiko Epson Corporation.

Info-ZIP copyright and license

This is version 2007-Mar-4 of the Info-ZIP license. The definitive version of this document should be available at <ftp://ftp.info-zip.org/pub/infozip/license.html> indefinitely and a copy at <http://www.info-zip.org/pub/infozip/license.html>.

Copyright © 1990-2007 Info-ZIP. All rights reserved.

For the purposes of this copyright and license, "Info-ZIP" is defined as the following set of individuals:

Mark Adler, John Bush, Karl Davis, Harald Denker, Jean-Michel Dubois, Jean-loup Gailly, Hunter Goatley, Ed Gordon, Ian Gorman, Chris Herborth, Dirk Haase, Greg Hartwig, Robert Heath, Jonathan Hudson, Paul Kienitz, David Kirschbaum, Johnny Lee, Onno van der Linden, Igor Mandrichenko, Steve P. Miller, Sergio Monesi, Keith Owens, George Petrov, Greg Roelofs, Kai Uwe Rommel, Steve Salisbury, Dave Smith, Steven M. Schweda, Christian Spieler, Cosmin Truta, Antoine Verheijen, Paul von Behren, Rich Wales, Mike White.

Permission is granted to anyone to use this software for any purpose, including commercial applications, and to alter it and redistribute it freely, subject to the above disclaimer and the following restrictions:

- ❑ Redistributions of source code (in whole or in part) must retain the above copyright notice, definition, disclaimer, and this list of conditions.
- ❑ Redistributions in binary form (compiled executables and libraries) must reproduce the above copyright notice, definition, disclaimer, and this list of conditions in documentation and/or other materials provided with the distribution. The sole exception to this condition is redistribution of a standard UnZipSFX binary (including SFXWiz) as part of a self-extracting archive; that is permitted without inclusion of this license, as long as the normal SFX banner has not been removed from the binary or disabled.
- ❑ Altered versions--including, but not limited to, ports to new operating systems, existing ports with new graphical interfaces, versions with modified or added functionality, and dynamic, shared, or static library versions not from Info-ZIP--must be plainly marked as such and must not be misrepresented as being the original source or, if binaries, compiled from the original source. Such altered versions also must not be misrepresented as being Info-ZIP releases--including, but not limited to, labeling of the altered versions with the names "Info-ZIP" (or any variation thereof, including, but not limited to, different capitalizations), "Pocket UnZip," "Wiz" or "MacZip" without the explicit permission of Info-ZIP. Such altered versions are further prohibited from misrepresentative use of the Zip-Bugs or Info-ZIP e-mail addresses or the Info-ZIP URL(s), such as to imply Info-ZIP will provide support for the altered versions.
- ❑ Info-ZIP retains the right to use the names "Info-ZIP," "Zip," "UnZip," "UnZipSFX," "Wiz," "Pocket UnZip," "Pocket Zip," and "MacZip" for its own source and binary releases.

General Notice: Other product names used herein are for identification purposes only and may be trademarks of their respective owners. Epson disclaims any and all rights in those marks.

This information is subject to change without notice.

Contents

Chapter 1 *Introduction*

About Your Printer	6
About This Guide	6
Warnings, Cautions, and Notes	7
Operating Environment	7
Features of the Network Interface	8
Network Interface Operation	9
Status lights	9
Network connector	9
About the Software	10
Terms and Concepts	10

Chapter 2 *Setting Up Your System for Network Printing*

Overview	11
Installing Network Components on Your Computer.	12
Windows Vista	12
Windows XP.	14
Mac OS X.	15
Setting Up the Network Interface	16
Connecting the Network Interface to the Network	16
Configuring the Network Interface	17
Printing a Network Status Sheet	18
Installing the Printer Software	19
Windows Vista	19
Windows XP.	22
Mac OS X.	27

Chapter 3 *Network Software*

EpsonNet Config for Windows	29
About EpsonNet Config	29
Accessing the EpsonNet Config User's Guide.	29
EpsonNet Config for Macintosh	30
About EpsonNet Config	30
Accessing the EpsonNet Config User's Guide.	30

EpsonNet Config with Web Browser	30
About EpsonNet Config	30
Configuring the Network Interface Using EpsonNet Config With a Web Browser .	32
Opening Screen	35

Chapter 4 Troubleshooting

General Problems	37
----------------------------	----

Chapter 5 Tips for Administrators

Network Setup Menu	39
Setting an IP Address on the Printer's Control Panel	39
Uninstalling Software	41
Windows Vista	41
Windows XP	41
Mac OS X	41

Index

Chapter 1

Introduction

About Your Printer

Your printer has a built-in Ethernet interface and can connect anywhere on your network using 10Base-T or 100Base-TX. The built-in Ethernet interface automatically selects the correct link speed and network protocols when it connects to the network.

The network interface supports multiple protocols and automatically detects the protocols being used on your network. You can print from Microsoft® Windows® and Mac OS® X applications.

If you want to configure the network interface to use TCP/IP and SNMP network protocols, use EpsonNet Config. The configuration utility is provided with your printer, and allows you to quickly and easily configure the network interface.

Note:

The EpsonNet Config utility configures the network interface to work only with protocols that exist on your network. This does not imply that you can use all of the above-mentioned protocols on your network or operating system. The protocols that the network interface can use may vary depending on the operating system and the network configuration.

About This Guide

This *Network Guide* contains information about using the network interface on a network. It includes how to set up the network interface, install the configuration software, and configure your printer and computer network settings.

For information about your printer, see your *Printer Guide* or *User's Guide*.

Note:

- ❑ *This guide is written for network administrators, and many of the steps included in this guide require detailed network knowledge and administrator rights.*
- ❑ *The term “network administrator” in this guide refers to the person responsible for maintaining the network. “Administrator” is synonymous with “Supervisor.”*
- ❑ *The term “network interface” refers to the built-in Ethernet interface of the printer in this guide.*
- ❑ *Some screen shots in this guide may list a printer name other than your printer. This does not alter the instructions.*

Warnings, Cautions, and Notes



Warnings

must be followed carefully to avoid bodily injury.



Cautions

must be observed to avoid damage to your equipment.

Notes

contain important information and useful tips on the operation of your printer.

Operating Environment

The network interface supports the following environments.

OS	Protocol
Windows Vista Windows XP (Home, Professional)	TCP/IP (using LPR, Standard TCP/IP Port)
Mac OS X 10.5	Bonjour
Mac OS X 10.4	TCP/IP

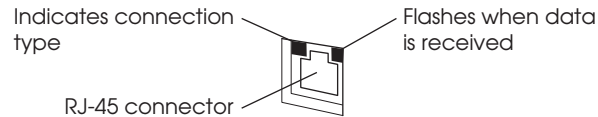
Features of the Network Interface

- ❑ Connects your Epson printer using a built-in Ethernet interface, which is called the network interface in this manual, to the network.
- ❑ Supports multiple protocols, such as TCP/IP and Bonjour.
- ❑ Supports both 10Base-T and 100Base-TX.
- ❑ Supports DHCP.
- ❑ Supports Automatic Private IP Addressing (APIPA) that assigns an IP address automatically to the network interface even if there is no DHCP server on the network.
- ❑ Supports the Dynamic DNS function.
- ❑ Supports SNMP.
- ❑ Supports SNTP (Simple Network Time Protocol).
- ❑ Supports Bonjour on Mac OS X 10.4 or later.

Network Interface Operation

Status lights

The status lights provide you with important information on the operation of the network interface.



The light on the left indicates whether the network interface is connected to a 10Base-T (green) or 100Base-TX (orange) network.

The light on the right flashes when data is being transmitted.

If the light on the left is solid green and the light on the right is off, the printer is not connected to the network.

Network connector

The RJ-45 connector is used to connect an Ethernet cable to a network. You can use an Ethernet cable for both 10Base-T and 100Base-TX.



Caution:

You must use a Category-5 or higher shielded twisted-pair cable to connect the network interface to a network.

About the Software

The software CD provided with your printer includes the following network software.

- ❑ EpsonNet Config for Windows is a Windows-based configuration utility that allows you to configure the network interface. See “EpsonNet Config for Windows” on page 29.
- ❑ EpsonNet Config for Macintosh is a Macintosh-based configuration utility that allows you to configure the network interface. See “EpsonNet Config for Macintosh” on page 30.
- ❑ EpsonNet Config with Web Browser is a web-based configuration utility that allows you to configure the network interface. See “EpsonNet Config with Web Browser” on page 30.

Terms and Concepts

Configuration -- a prepared set of conditions for proper operation of a device. Configuring the network interface is to prepare it to work with protocols available on a network.

DHCP -- a dynamic host configuration protocol. It is a protocol that assigns dynamic IP addresses to devices on a network.

Protocol -- a rule that controls how data or information is exchanged through a network. Computers and software cannot communicate with each other using different protocols.

TCP/IP -- Transmission Control Protocol/Internet Protocol, a layer of protocols that provides communication between nodes on a network.

Setting Up Your System for Network Printing

Overview

This section describes the general procedure on how to set up the network interface.

1. Check the network interface operation.

Check the functions and operations of the network interface, such as the status lights. See “Network Interface Operation” on page 9 for details.

2. Install the necessary network components on your computers.

Make sure that the necessary network components (such as TCP/IP) are installed on your computers, and network settings (such as the IP address, subnet mask, etc.) are set.

3. Connect the network interface to the network.

Connect the network interface to the network. See “Connecting the Network Interface to the Network” on page 16 for details.

4. Configure the network interface and install the printer driver.

See “Configuring the Network Interface” on page 17 for details.

5. If necessary, configure the network settings of the network interface using EpsonNet Config.

Configure the network interface using EpsonNet Config. For Windows users, see “About EpsonNet Config” on page 29. For Macintosh users, see “About EpsonNet Config” on page 30.


Installing Network Components on Your Computer

Before configuring the network interface and printing from the computer, you need to install the necessary network components (such as TCP/IP) and assign an IP address and subnet mask for your computer, depending on the printing method you want to use. See the section in this chapter appropriate for your operating system.

Windows Vista

For Windows Vista, use the following procedure to install the necessary components.

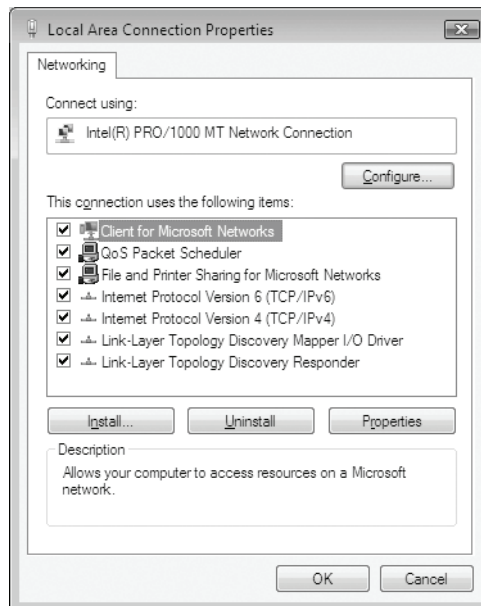
Note:

- The Windows operating system CD may be required during the installation.*
 - When using TCP/IP for printing, you need to set the IP address, the subnet mask, and the default gateway of the computer.*
1. Click , click **Control Panel**, and then click **View network status and tasks** or double-click **Network and Sharing Center**.
 2. Click **View Status**, and then click the **Properties** button.

Note:

*If the User Account Control screen appears, click the **Continue** button.*

3. Check if the following network components are in the list. If they are already installed, go to “Network Software” on page 29.



The following table lists the network components required for configuring the network interface with EpsonNet Config.

EpsonNet Config's setting screens	Necessary components
TCP/IP, SNMP (IP trap)	Internet Protocol (TCP/IP)

The following table lists the network components required for network printing.

Printing method	Necessary components
LPR printing	Internet Protocol (TCP/IP)

4. If the necessary components are not in the list, click **Install** to install them.
5. Double-click **Internet Protocol Version 4 (TCP/IPv4)** on the Local Area Connection Properties dialog box to open the Internet Protocols Version 4 (TCP/IPv4) Properties dialog box. Set the IP address, the subnet mask, etc. and then click **OK**.
6. Restart the computer.

The necessary components are now installed. Go to the section “Connecting the Network Interface to the Network” on page 16.

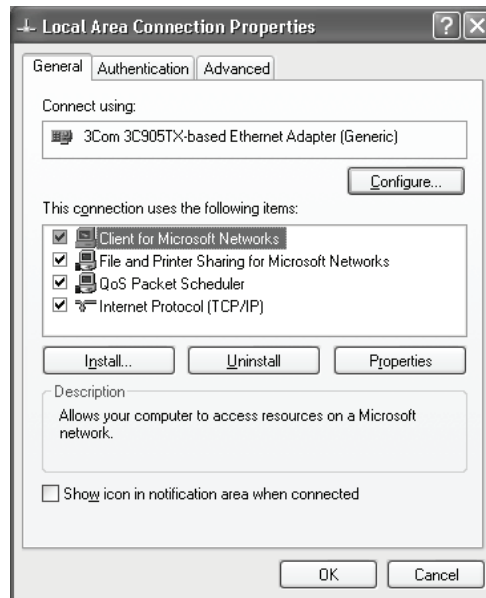
Windows XP

For Windows XP, use the following procedure to install the necessary components.

Note:

The Windows XP CD may be required during the installation.

1. Click **Start**, highlight **Control Panel**, and then click **Network and Internet Connections**. Select **Network Connections**.
2. Under **LAN or High-Speed Internet**, click the **Local Area Connection** icon.
3. Under **Network Tasks**, click **Change settings of this connection**.
4. Check if the following network components are in the list. If they are already installed, go to “Network Software” on page 29.



The following table lists the network components required for configuring the network interface with EpsonNet Config.

EpsonNet Config's setting screens	Necessary components
TCP/IP, SNMP (IP trap)	Internet Protocol (TCP/IP)

The following table lists the components required for network printing.

Printing method	Necessary components
LPR printing	Internet Protocol (TCP/IP)

5. If the necessary components are not in the list, click **Install** to install them.
6. For LPR printing:
Double-click **Internet Protocol (TCP/IP)** on the Local Area Connection Properties dialog box to open the Internet Protocols (TCP/IP) Properties dialog box. Set the IP address, the subnet mask, etc. and then click **OK**.
7. Restart the computer.

The necessary components are now installed. Go to the section “Connecting the Network Interface to the Network” on page 16.

Mac OS X

To assign an IP address, subnet mask, etc. to your Macintosh, follow the steps below.

1. From the Apple menu, select **System Preferences**.
2. Open the **Network** control panel. Click the **TCP/IP** tab.

Note:

*For Mac OS X 10.5, select **Ethernet** as the connecting method on the Network control panel, select the method to assign the IP address from the Configure menu, and then assign the IP address.*

3. Select **Built-in Ethernet** from the Show pull down menu.
4. Assign an IP address and other settings if necessary.
5. Click the **Apply Now** button to save any changes.

Go to the section “Connecting the Network Interface to the Network” on page 16.

Setting Up the Network Interface

Connecting the Network Interface to the Network

Follow the instructions below to connect the network interface to the network.

1. Make sure that your printer is turned off.
2. Connect one end of the network cable to the RJ-45 connector on the network interface, and the other end to the network.



Caution:

- ❑ You must use a Category 5 shielded twisted-pair cable to connect the network interface to prevent malfunction.
- ❑ Do not connect or disconnect the network cable when the printer is on.

Note:

You can use both 10Base-T and 100Base-TX. When you print a lot of data, we recommend using the highest speed available for your product with light network traffic.

3. Turn on your printer. After the status lights go off, print a network status sheet.



Caution:

After turning off the printer, wait until the status lights go off before turning it back on; otherwise the network interface may not work correctly.

Note for Mac OS X 10.4 or later:

Since the printer supports Bonjour/Rendezvous and is on by default, you can use the printer on a network just by connecting it to the network. If you want to disable the Bonjour/Rendezvous setting, use the printer's control panel. See "Setting an IP Address on the Printer's Control Panel" on page 39 for details.

Now, you can configure the network interface to use TCP/IP on the network and install the printer driver.

Configuring the Network Interface

Configure the network interface for use on a TCP/IP network.

1. Make sure that the printer is turned on, and the LCD displays `READY`.
2. Press the Menu ► button on the printer to enter the printer's menu system.
3. Press ▼ to highlight `NETWORK SETUP`, then press ►.
4. Press ►, then ▼ to highlight `ENABLE`.
5. Press **OK**. A checkmark appears next to `ENABLE` to show that it's selected.
6. Press ►, then ▼ to highlight `IP ADDRESS SETTING`.
7. Press ►, then press ▲ or ▼ to choose one of the following IP configuration settings:
 - Choose `AUTO` if your network uses a DHCP server to configure your network devices' IP settings automatically.
 - Choose `PANEL` if you would like to configure the printer's IP settings manually.
8. Press **OK**. A checkbox appears next to the setting you selected.
9. Press ◀, to go back, then do one of the following:
 - If you selected `AUTO` as the IP address setting, press the ■ Pause button to exit the printer menu. Then continue with step 14.
 - If you selected `PANEL` as the IP address setting, continue with step 10.
10. Press ▼ to highlight `IP, SM, DG SETTING`, then press ►. The LCD displays the IP address.
11. Press ▲ or ▼ to change each octet value, then press ► to select the next octet. When you have changed the value of the last octet, press ►. The LCD displays the subnet mask.
12. Press ▲ or ▼ to change each octet value, then press ► to select the next octet. When you have changed the value of the last octet, press ►. The LCD displays the default gateway.

13. Press ▲ or ▼ to change each octet value, then press ► to select the next octet. When you have changed the value of the last octet, press the ■ Pause button to exit the printer menu.
14. Turn the printer off then back on again.

See “Printing a Network Status Sheet” on page 18 to print a network status sheet and confirm the new IP address.

Note:

- ❑ *You must first set the IP address before using EpsonNet with Web Browser.*
- ❑ *See the Printer Guide or User’s Guide for more information about settings on the printer’s control panel.*

Now you can use the printer on the TCP/IP network.

Printing a Network Status Sheet


1. Make sure that the printer is not printing and the LCD displays READY.
2. Press the Menu ► button on the printer’s control panel to enter the printer’s menu system.
3. Press ▼ to highlight TEST PRINT, then press ►.
4. Press ▼ to highlight NETWORK STATUS SHEET, then press ►.
5. Press **OK** to print the Network Status sheet.

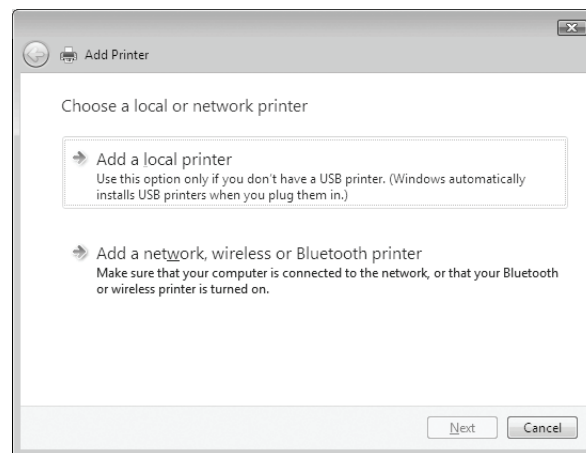
Installing the Printer Software

To print to the network printer, you need to install the printer driver on the computer. See the section in this chapter appropriate for your operating system.

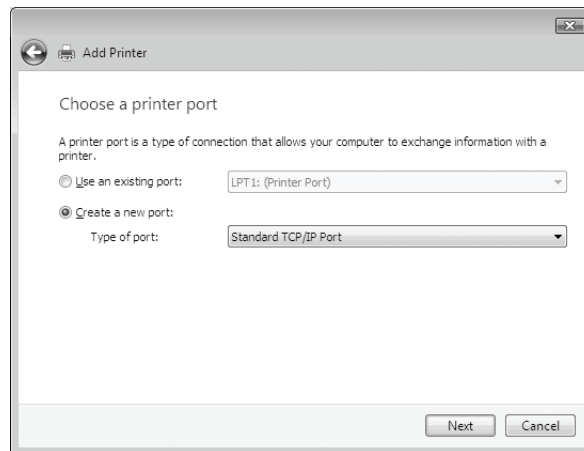
Windows Vista

Adding the Network Port

1. Click , **Control Panel**, and then **Printer**.
2. Click **Add a printer** to start the Add Printer wizard.
3. Click **Add a local printer**.

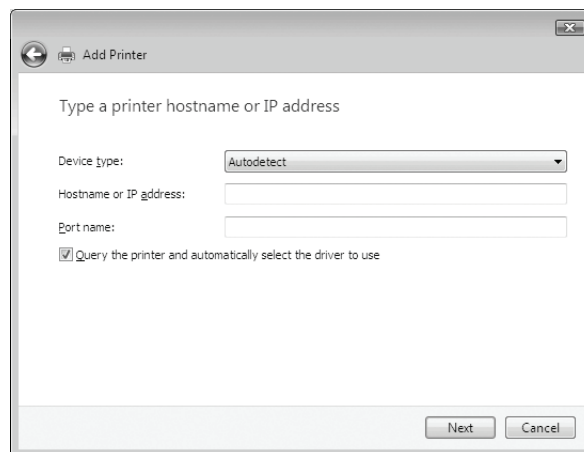


4. Select the **Create a new port** radio button, then select **Standard TCP/IP Port** from the list.

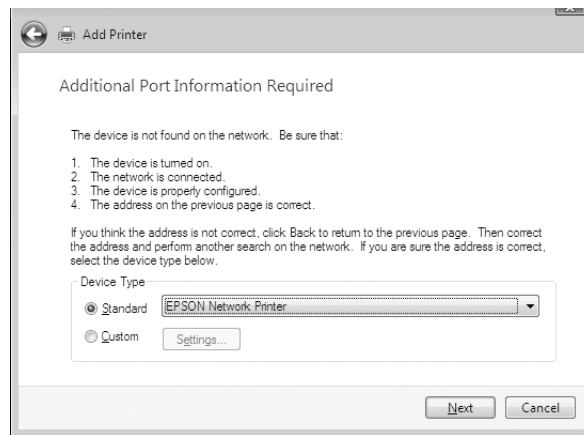


5. Click **Next**.

6. Enter the IP address of the network interface and then click **Next**.



7. If an error occurs, the following dialog box appears. Select the **Standard** radio button and then select **EPSON Network Printer**. Click **Next**.



8. Click **Finish**.
9. See "Installing the Printer Driver" below to install the printer driver.

Installing the Printer Driver

1. Insert the printer software CD in your CD or DVD drive.
2. Follow the on-screen instructions to install the printer driver.
3. When you see a screen like this one, click the **Manual** button.

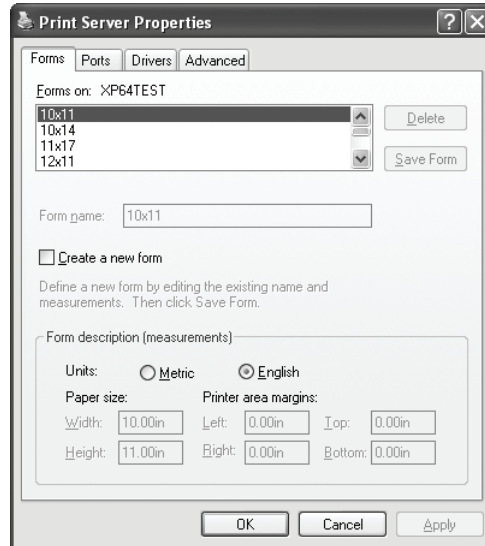


4. Select the port you created for the printer, then click **OK**.
5. Follow the instructions to finish installing the printer driver.

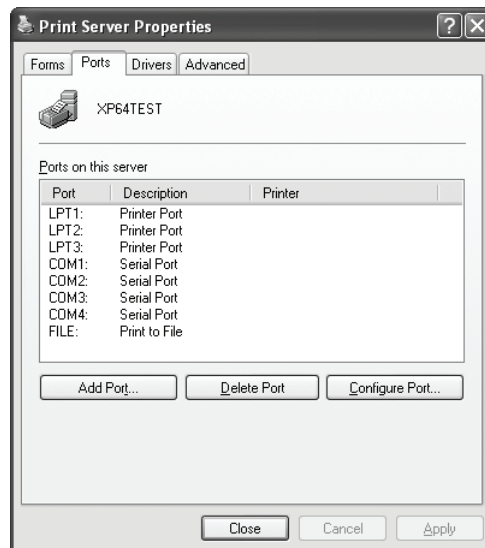
Windows XP

Adding the Network Port

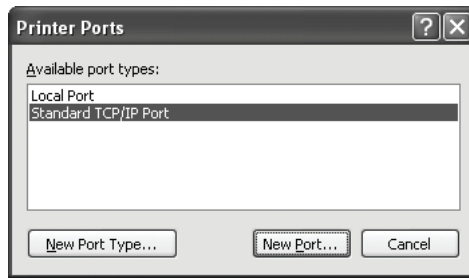
1. Click **Start**, click **Control Panel**, click **Printers and Other Hardware**, and then click **Printers and Faxes**.
2. From the File menu, select **Server Properties**. You see a screen like this:



3. Click the **Ports** tab, then click **Add Port**.



4. Select **Standard TCP/IP Port**, then click the **New Port** button.

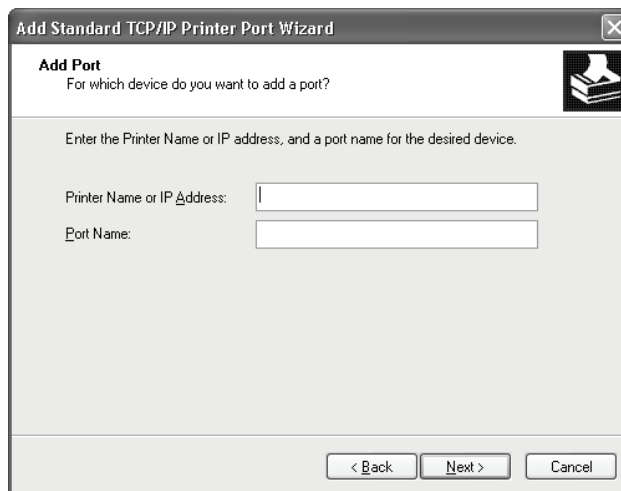


5. Click **Next**.

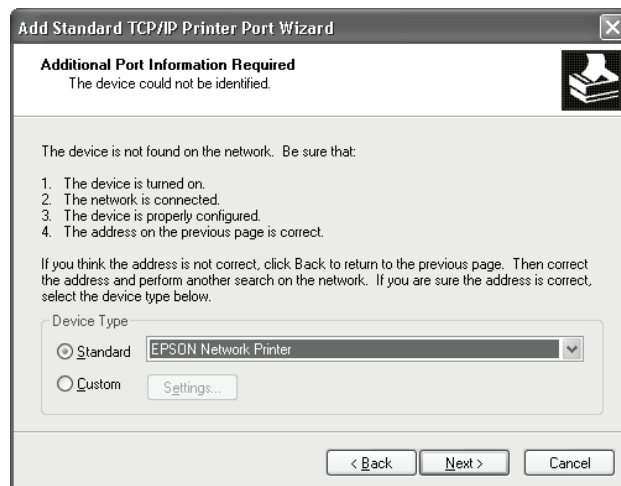


6. Do one of the following

- ❑ If you are using DHCP to assign an IP address to the printer, enter the printer's Host Name or IP address, shown on the network status sheet, in the Printer Name or IP Address text box. Then click **Next**.
- ❑ If you manually assigned an IP address to the printer using the control panel or Epson NetConfig, enter the printer's IP address, shown on the network status sheet, in the Printer Name or IP Address text box. Then click **Next**.



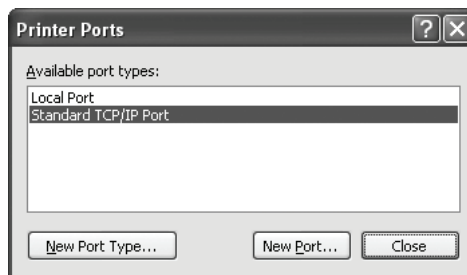
7. Make sure that **Standard** and **Generic Network Card** are selected, then click **Next**.



8. Make sure that the Device matches the Host Name or IP address shown on the network status sheet, then click **Finish**.



9. Click the **Close** button to return to the Server Properties window.



10. Click the **Close** button to return to the Printers and Faxes window.
11. See “Installing the Printer Driver” on page 26 to install the printer driver.

Installing the Printer Driver

1. Insert the printer software CD in your CD or DVD drive.
2. Follow the on-screen instructions to install the printer driver.
3. When you see a screen like this one, click the **Manual** button.



4. Select the port you created for the printer, then click **OK**.
5. Follow the on-screen instructions to finish installing the printer driver.
6. Click **OK** in the Install From Disk dialog box.

Mac OS X

Installing the Printer Driver

1. Insert the printer software CD in your CD or DVD drive.
2. Follow the on-screen instructions to install the printer driver.
3. See the section below for your operating system and printing method.

Adding the Printer

Mac OS X 10.5

Bonjour Printing

1. Open **System Preferences**.
2. Open **Print & Fax**.
3. Click the **+** button to add a new printer.
4. Select the printer model that is connected with Bonjour.
5. Click **Add**.

TCP/IP Printing

1. Open **System Preferences**.
2. Open **Print & Fax**.
3. Click the **+** button to add a new printer.
4. Click **More Printers**, select **EPSON TCP/IP** from the drop down list, and then select the printer model.
5. Click **Add**.

Mac OS X 10.4

Bonjour/Rendezvous Printing

1. Open the **Applications** folder.
2. Open the **Utilities** folder.
3. Open the **Printer Setup Utility**, and then click **Add**.
4. Select the printer model that is connected with Bonjour.

Note:

*If your printer is not displayed with Bonjour, click **More Printers**, select **Bonjour** from the drop-down list, then select the printer model.*

5. Click **Add**.

TCP/IP Printing

1. Open the **Applications** folder.
2. Open the **Utilities** folder.
3. Open the **Printer Setup Utility** and click **Add**.
4. Click **More Printers**, select **EPSON TCP/IP** from the drop down list, and then select the printer model.

Note:

*If your printer is not displayed with TCP/IP, click **More Printers**, select **EPSON TCP/IP** from the drop-down list, then select the printer model.*

5. Click **Add**.

Chapter 3

Network Software

This chapter explains how to use the network software provided with your printer.

EpsonNet Config for Windows

About EpsonNet Config

EpsonNet Config allows administrators to configure the network interface.

Note:

Be sure to use EpsonNet Config included on the software CD shipped with your printer.

Accessing the EpsonNet Config User's Guide

The EpsonNet Config *User's Guide* contains detailed information on EpsonNet Config. Follow the steps below to access the EpsonNet Config *User's Guide*.

1. Click **Start**, point to **Programs** or **All Programs**, select **EpsonNet**, and then select **EpsonNet Config**. Click **EpsonNet Config** to start it.
2. From the Help menu, select **EpsonNet Config Help**.

The EpsonNet Config *User's Guide* appears. Click the links on the left side of the screen to get information on using EpsonNet Config.

EpsonNet Config for Macintosh

About EpsonNet Config

EpsonNet Config allows administrators to configure the network interface.

Note:

Be sure to use EpsonNet Config included on the software CD shipped with your printer.

Accessing the EpsonNet Config User's Guide

The EpsonNet Config User's Guide contains detailed information on EpsonNet Config. Follow the steps below to access the EpsonNet Config *User's Guide*.

1. Double-click the **Macintosh HD** icon. In the **Applications** folder, double-click the **EpsonNet** folder, and then double-click the **EpsonNet Config** folder. Finally, double-click the **EpsonNet Config** icon.
2. From the Help menu, select **EpsonNet Config Help**.

The EpsonNet Config *User's Guide* appears. Click the links on the left side of the screen to get information on using EpsonNet Config.

EpsonNet Config with Web Browser

About EpsonNet Config

EpsonNet Config with Web Browser is a Web-based utility designed to configure the printer for use on a network.

By typing the IP address of the network interface for the URL in your browser, you can start EpsonNet Config to allow you to configure the network interface.

Supported Web Browsers

Windows:

- Microsoft Internet Explorer version 5.0 or later
- Netscape Navigator version 7.0 or later
- Firefox version 2.0 or later

Mac OS X:

- Netscape Navigator version 7.0 or later
- Apple Safari version 1.2 or later
- Firefox version 2.0 or later

About Web Browser Settings

When running EpsonNet Config with Web Browser, do not use a proxy server to access the Internet. If the **Access the Internet using a proxy server** checkbox is selected, you cannot use EpsonNet Config with Web Browser. Follow steps below to disable the Access the Internet using a proxy server setting.

1. Right-click the **Internet Explorer** icon on the desktop, and then select **Properties**.
2. Click the **Connection** tab.
3. Uncheck the **Access the Internet using a proxy server** checkbox.

Configuring the Network Interface Using EpsonNet Config With a Web Browser

After you have assigned an IP address to the network interface using the printer's control panel, EpsonNet Config, or a DHCP server, you can configure the network interface using EpsonNet Config with Web Browser.

Note:

- A Web browser must be installed on your computer.
- TCP/IP must be correctly set for the computer and the network interface.

Follow the steps below to change the IP address using EpsonNet Config.

1. Turn on your printer.
2. Run EpsonNet Config in one of the following ways.
 - Run EpsonNet Config for Windows or Macintosh. Select the printer you want to configure from the list and then click **Launch Browser**.
 - Open your browser, and then type in the IP address of the network interface directly. Do not run EpsonNet Config for Windows or Macintosh.

http://IP address of network interface/

Example: **http://192.168.100.201/**

Note:

To check the IP address of the network interface, use EpsonNet Config. See "About EpsonNet Config" on page 29 for Windows users, or see "About EpsonNet Config" on page 30 for Macintosh users for details. You can also print a Network Status Sheet from the printer's control panel. See "Printing a Network Status Sheet" on page 18 for instructions.

3. Click **TCP/IP** under Network on the Configuration menu to display the TCP/IP setting screen.
4. Select a method for acquiring the IP address. When you select **Auto**, DHCP becomes available and assigns an IP address automatically. If you want to set the IP address manually, select **Manual**.

Note:

- The network administrator must check any changes made to the IP address settings.*
 - When **Auto** is selected, DHCP becomes available. A DHCP server/router must be available on your network.*
 - If **Set Using Automatic Private IP Addressing (APIPA)** is enabled, a private IP address is automatically assigned to the network interface even when there are no DHCP servers on your network.*
 - If the Dynamic DNS function is not supported, we recommend that you select **Manual** and then enter an IP address. This is because if you select **Auto**, the IP address of the network interface changes every time you turn on the printer so that you need to change the printer port setting accordingly.*
5. To assign an IP address manually, enter the IP address, the subnet mask, and the default gateway. Be sure the IP address does not conflict with any other devices on the network.

Note:

If there is a server or a router functioning as a gateway, enter the IP address of the server or the router for the gateway address. If there is no gateway, leave the default values.

6. If you want to get a private address between 169.254.1.1 and 169.254.254.254 automatically when an IP address cannot be obtained by the DHCP server, leave the **Set Using Automatic Private IP Addressing (APIPA)** setting set to **Enable**; otherwise, select **Disable**.
7. When setting an IP address using the ping command, select **Enable** for **Set Using PING**. Select **Disable** when setting an IP address with EpsonNet Config; this prevents any unexpected change of the IP address.
8. Select **Enable** for **Acquire DNS Server Address Automatically** if you want to acquire the DNS server address using the DHCP server.

If you want to enter the DNS server address manually, select **Disable** and then enter the IP address of the DNS server.

9. Select **Enable** for **Acquire Host Name and Domain Name Automatically** if you want to acquire the host name and the domain name using the DHCP server.

If you want to specify manually, enter the host name and the domain name in the text boxes.

10. Select **Enable** for **Register Network Interface Address to DNS Server** if you want to register the host name and domain name to the DNS server through the DHCP server that supports Dynamic DNS.

If you want to register the host name and the domain name directly to the DNS server, select **Enable** for **Register Network Interface Address Directly to DNS Server**.

11. Select **Enable** or **Disable** for **Use Universal Plug and Play**. Select **Enable** if you want to use the Universal Plug and Play function on Windows Me or future operating systems.
12. Change the default Universal Plug and Play device name, if desired. This device name is used for Windows that supports the Universal Plug and Play function.
13. Mac OS X only:
Select **Enable** or **Disable** for **Use Bonjour**. If you select **Enable**, enter the Bonjour Name and the Bonjour Printer Name. If your network environment supports DHCP, you can use the printer on the network just by enabling this setting.
14. Click **Submit** and enter the password, if necessary, to update the settings.

Note:

If you have set the Administrator Name on the Administrator screen, enter the administrator name for the user name.

15. If the message "Configuration change is complete!" appears on your screen, the update is complete. Do not exit the Web browser and do not send a job to the printer until this message appears. Follow the on-screen instructions to reset the printer.

Note:

- Since the new IP address becomes available after the printer is reset, you need to restart EpsonNet Config by entering the new IP address.*
- Only changes on the page where you press the **Submit** button take effect.*

Opening Screen

Any user can access Epson NetConfig with Web Browser by typing the IP address of the network interface for the URL in your browser.

Top Menu Bar

Home	Links to the opening screen.
Favorite	Links to a Web site previously defined by the administrator.
Help	Links to Help.
About EpsonNet Config	Links to the copyright and version information for EpsonNet Config.
EPSON Logo	Links to the Epson Web site (http://www.epson.com).

Menu

Information - Printer	
Device	Displays the printer device information.
Consumables	Displays the consumables information.
Information - Network	
General	Displays the network interface information.
TCP/IP	Displays information about TCP/IP.
SNMP	Displays information about SNMP.
Access Control	Displays information about Access Control.
Timeout	Displays information about Timeout.
Time	Displays information about Time.
EDM	Displays the EDM Agent information.
Configuration - Network	
Ethernet	Configure the desired settings for Ethernet.
TCP/IP	Configure the desired settings/method for TCP/IP.
SNMP	Configure the desired settings for SNMP.
Access Control	Configure the desired settings for Access Control.
Timeout	Configure the desired settings for Timeout.
Time	Configure the desired settings for Time.

Configuration - Optional	
Administrator	Type the name of the administrator and a link to a favorite Web site.
Reset	Resets the printer and returns to the default settings.
Password	Set the password to protect settings.

Chapter 4

Troubleshooting

General Problems

Cannot configure the network interface or cannot print from the network.

Cause	What to do
The printer settings or network settings may be wrong.	First, check to see if you can print a status sheet, as described in "Printing a Network Status Sheet" on page 18. If you can print a status sheet, check the network settings.

Cannot print even if you have assigned the IP address to the computer and the printer.

Cause	What to do
You have assigned an IP address to the computer manually, but you assigned the IP address to the printer by Automatic Private IP Addressing (APIPA).	Use EpsonNet Config or the printer's control panel to assign the printer an IP address that belongs to the same segment as the computer.

Unable to start EpsonNet Config.

Cause	What to do
You have added or deleted protocols after installing EpsonNet Config.	Uninstall EpsonNet Config and then reinstall it. See "Uninstalling Software" on page 41.

The message "EpsonNet Config cannot be used because no network is installed." appears when you start EpsonNet Config.

Cause	What to do
TCP/IP is not installed on the computer.	Install the TCP/IP protocol.
TCP/IP is installed on the computer, but its IP address is not set correctly.	Set a correct IP address for the computer.

The message “Could not complete communicating configuration data” appears when you send settings to the network interface.

Cause	What to do
This may happen when using a dial-up router.	Run Command Prompt from the computer on which EpsonNet Config is installed, and then enter the following command: Format: >ROUTE_ADD_the IP address of the network interface_ the IP address of the computer (the under bar represents one space) Example: >ROUTE ADD 192.168.192.168 22.33.44.55.

Unable to start EpsonNet Config with Web Browser.

Cause	What to do
You have not set the IP address for the network interface.	Set the IP address for the network interface using EpsonNet Config or the printer’s control panel. You can check the IP address by printing a network status sheet, see “Printing a Network Status Sheet” on page 18.

The Model Name and IP Address do not appear in the EpsonNet Config dialog box.

Cause	What to do
If a valid IP address is not set, the items indicated in the dialog box mentioned above may not appear.	Set a valid IP address. Refresh the status by selecting Refresh from the View menu. Increase the length of time before a timeout. To do this, select Options from the Tool menu, and then select Timeout . Note that doing so can cause EpsonNet Config to slowly.

Chapter 5

Tips for Administrators

Network Setup Menu

These items are used to make network settings on the printer's control panel.

Item	Settings
NETWORK SETUP	Disable, Enable
IP ADDRESS SETTING*	Auto, Panel
IP, SM, DG SETTING*	0.0.0.0 to 255.255.255.254
Bonjour*	On, Off
INIT NETWORK SETTING*	EXECUTE

* Available only when `Enable` is selected for `NETWORK SETUP`.

Setting an IP Address on the Printer's Control Panel

After connecting the printer to the network, you need to set the IP address for the network interface.

To set the IP address, subnet mask, and default gateway from the control panel, follow the steps below.

1. Make sure that the printer is turned on, and the LCD displays `READY`.
2. Press the Menu ► button on the printer to enter the printer's menu system.
3. Press ▼ to highlight `NETWORK SETUP`, then press ►.
4. Press ►, then ▼ to highlight `ENABLE`.
5. Press **OK**. A checkmark appears next to `ENABLE` to show that it's selected.

6. Press **▶**, then **▼** to highlight `IP ADDRESS SETTING`.
7. Press **▶**, then press **▲** or **▼** to choose one of the following IP configuration settings:
 - Choose `AUTO` if your network uses a DHCP server to configure your network devices' IP settings automatically.
 - Choose `PANEL` if you would like to configure the printer's IP settings manually.
8. Press **OK**. A checkbox appears next to the setting you selected.
9. Press **◀**, to go back, then do one of the following:
 - If you selected `AUTO` as the IP address setting, press the **||** Pause button to exit the printer menu. Then continue with step 14.
 - If you selected `PANEL` as the IP address setting, continue with step 10.
10. Press **▼** to highlight `IP, SM, DG SETTING`, then press **▶**. The LCD displays the IP address.
11. Press **▲** or **▼** to change each octet value, then press **▶** to select the next octet. When you have changed the value of the last octet, press **▶**. The LCD displays the subnet mask.
12. Press **▲** or **▼** to change each octet value, then press **▶** to select the next octet. When you have changed the value of the last octet, press **▶**. The LCD displays the default gateway.
13. Press **▲** or **▼** to change each octet value, then press **▶** to select the next octet. When you have changed the value of the last octet, press the **||** Pause button to exit the printer menu.
14. Turn the printer off then back on again.

Print a network status sheet to confirm the new IP address.

Note:

- You must first set the IP address before using EpsonNet Config with Web Browser.*
- See the User's Guide for more information about settings on the printer's control panel.*

Uninstalling Software

Follow the steps below to uninstall the network software.

Windows Vista

1. Click **Start**, click **Control Panel**, and then click **Uninstall a program**.
2. Select the utility you want to uninstall, and then click the **Uninstall/Change** button.
3. Follow the on-screen instructions to complete uninstallation.

Windows XP

1. Click **Start**, click **Control Panel**, and then click **Add or Remove Programs**.
2. Click the **Change or Remove Programs** icon.
3. Select the utility you want to uninstall, and then click the **Change/Remove** button.
4. Follow the on-screen instructions to complete uninstallation.

Mac OS X

1. Double-click the **EpsonNet Config Installer** icon.
2. Click the **Continue** button.
3. In the License dialog box, read the License Agreement, and then click the **Accept** button.
4. Select **Uninstall** from the pull down menu.
5. Click the **Uninstall** button.
6. Follow the on-screen instructions to complete uninstallation.

Note:

You can also uninstall EpsonNet Config by dragging the folder to the Trash.

Index

A

Administrator tips, 39 to 41
Automatic Private IP Addressing (APIPA), 33

B

Bonjour printing, 27, 28

C

Cable, network, 9
Configuring network interface
 control panel, 17 to 18
 EpsonNet Config with Web Browser, 32 to 34
Connector, network, 9
Control panel, configuring network interface, 17 to 18

D

Default gateway, 17, 33
DHCP, 10
Dynamic DNS, 34

E

EpsonNet
 Config (Web Browser), 30
EpsonNet Config
 Macintosh, 30
 Windows, 29
EpsonNet Config with Web Browser
 password, 36
 settings, 35 to 36
 using, 32 to 36

I

Installing printer driver
 Macintosh, 27 to 28
 Windows Vista, 19 to 21
 Windows XP, 22 to 26
IP address
 control panel, 17 to 18
 EpsonNet Config with Web Browser, 32 to 34

L

Lights, status, 9

M

Macintosh
 Bonjour printing, 27, 28
 installing printer driver, 27 to 28
 network settings, 15
 TCP/IP printing, 27, 28

N

Network
 cable, 9
 connector, 9
 printing status sheet, 18
 protocols, 6
Network interface
 configuring, 17 to 18
 connecting to network, 16
Network software, uninstalling, 41

O

Operating environment, 7

P

Password, EpsonNet Config with Web Browser, 36

Printer driver

installing in Macintosh, 27 to 28

installing in Windows Vista, 19 to 21

installing in Windows XP, 22 to 26

Problems, solving, 37 to 38

Protocols, 7

R

Rendezvous printing, 28

Resetting network interface, 36

RJ-45 connector, Network connector, 9

Router, 33

S

Setting the IP address, 32

Software, uninstalling, 41

Status lights, 9

Status sheet, printing, 18

Subnet mask, 17, 33

T

TCP/IP, 32

definition, 10

setting up in Windows, 12 to 15

setting up on Macintosh, 15, 27, 28

Troubleshooting, 37 to 38

U

Uninstalling network software, 41

Universal Plug and Play, 34

W

Windows

Vista, 12 to 13, 19 to 21

XP, 14 to 15, 22 to 26