

# EPSON Product Support Bulletin

Date:	09/25/2002	Originator:	MS
PSB #:	PSB.2002.09.004	Authorization:	<i>MS</i>
Reference:	N/A	Total Pages:	
Product(s):	EPSON Stylus Pro 9000, 9500, 9600, 7000, 7500, 7600, 10000, 10600, 5000, 5500 and Stylus Color 3000 Printers		
Subject:	PostScript Printing Support for Mac OS X Native Mode		

This bulletin provides instructions for installing and configuring a Mac OS X Client with your existing EPSON hardware or software RIP. If your EPSON Professional Wide Format printer was bundled with one of the RIP packages listed below, or if you had purchased the RIP as an option, then you can configure a Mac OS X Client with OS Version 10.2 and above for PostScript printing by simply installing the appropriate RIP PPD.

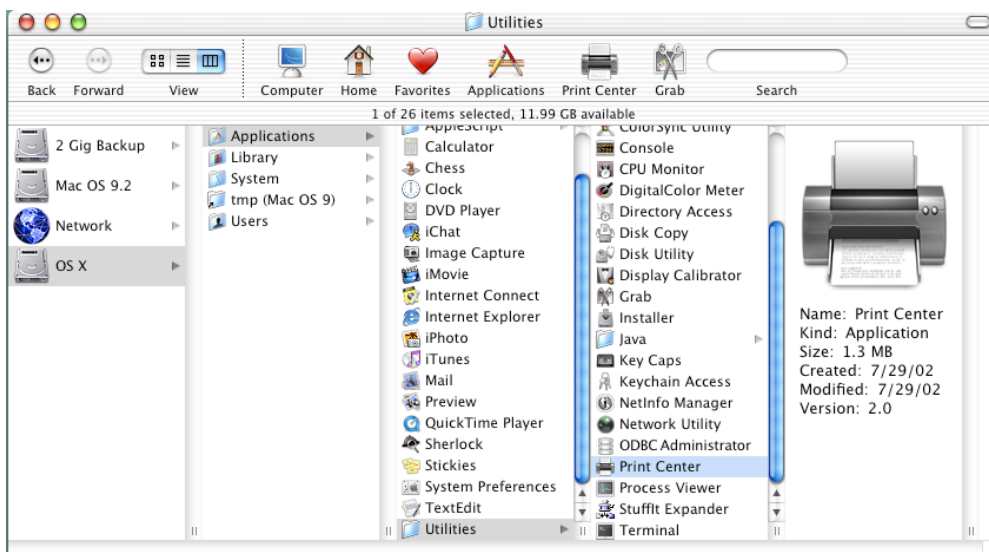
- EFI RS 5000 LX Series – Stylus Pro 5000 printer
- EFI RS 5100 X2 Series - Stylus Pro 9000, 7000, 9500 and 7500 printers
- Fiery Spark Designer – Stylus Pro 5500 printer
- Fiery Spark Professional 1.0 – Stylus Pro 5500 and Stylus Pro 10000ARC/DYE printers
- Fiery Spark Professional 2.0 – Stylus Pro 9600UCM/7600UCM printers
- EPSON StylusRIP - Stylus Color 3000 and Stylus Pro 5000 printers

## Installation Instructions:

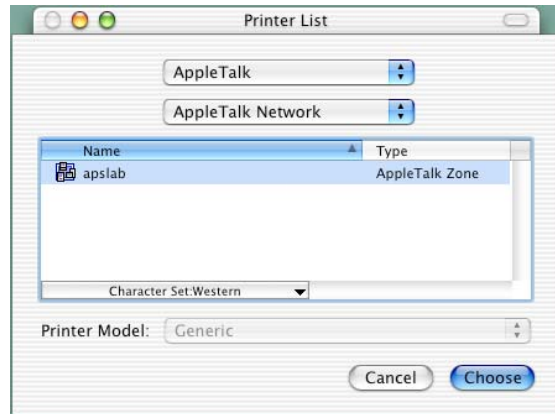
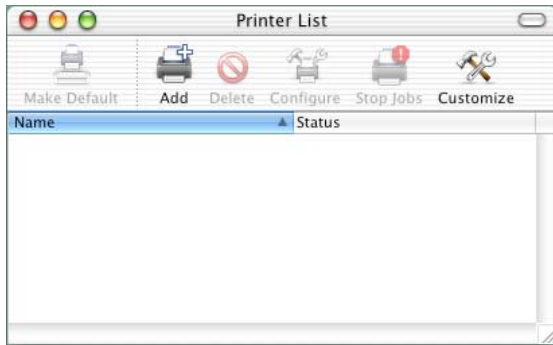
Setup your existing RIP Server as per the instructions provided in the User's Guide that came with your RIP. To setup a Mac OS X Version 10.2 Client follow the instructions below. There are two ways you can add a PPD and configure your printer in OS X, **AppleTalk** or **IP Printing**.

### AppleTalk Installation:

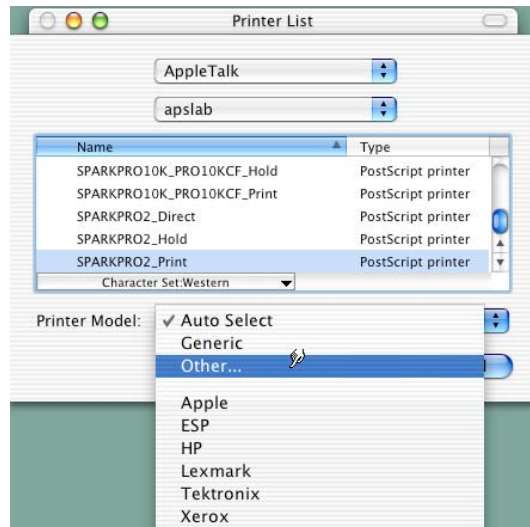
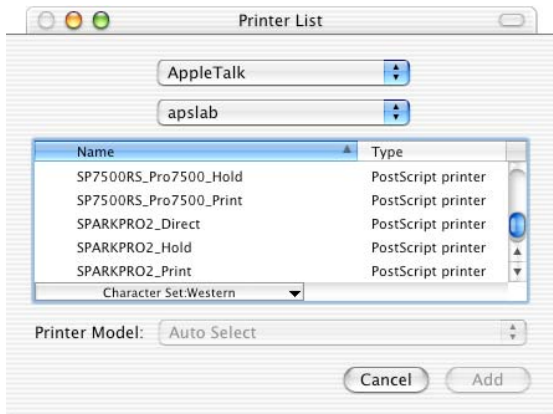
1. Open the **Print Center**, which can be found on your hard disk driver under **Applications - Utilities**



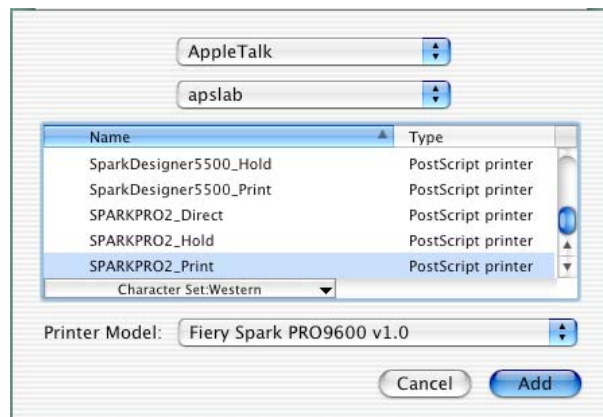
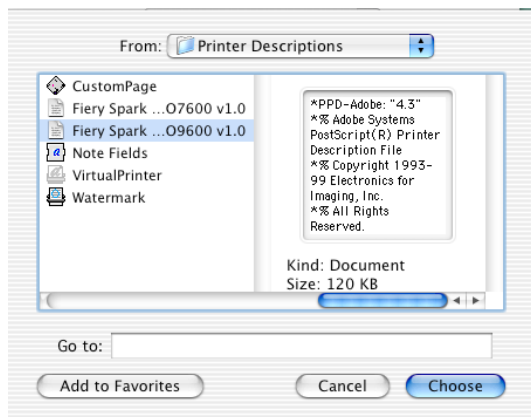
2. Click on the **Add** button. Then select **AppleTalk** from the top sub-menu and your **AppleTalk** zone if applicable.



3. The **Print Center** should scan the network and find all your devices. Select your printer from the list and click on the **Printer Model** sub-menu. Select **Other** to continue.



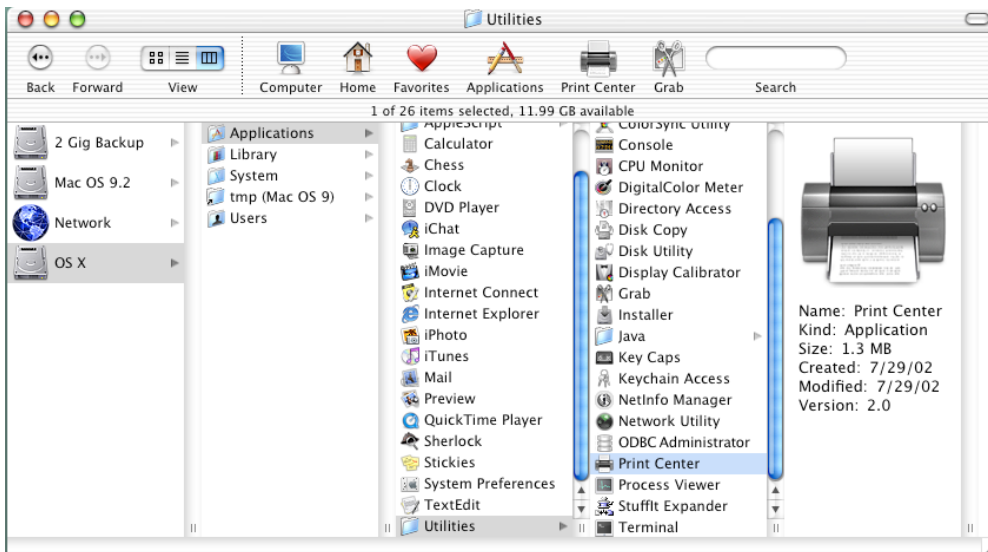
4. Navigate to the location of your PPD file. After selecting the PPD file it should reflect the name of the printer under the **Printer Model** section. Click on the **Add** button.



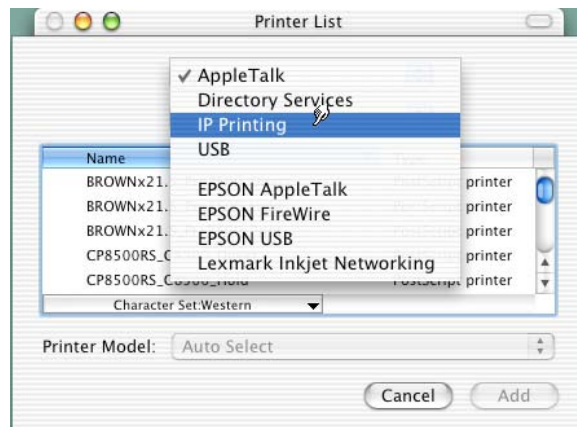
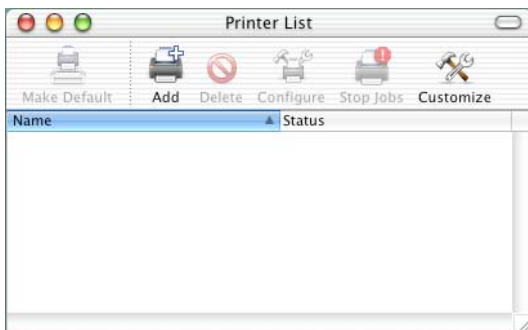
5. Repeat the process to add your additional queues. Your Mac OS X Client should now be ready to print.

## IP Printing Installation:

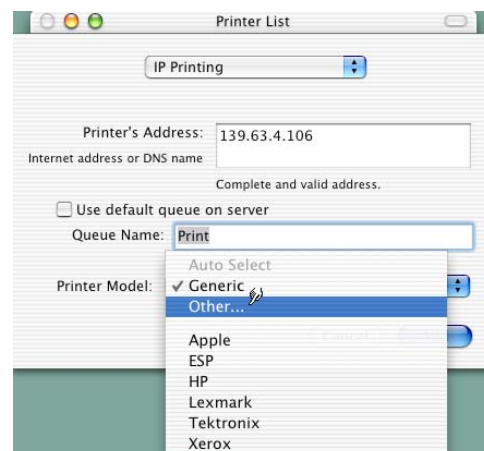
1. Open the **Print Center**, which can be found on your HDD under **Applications - Utilities**



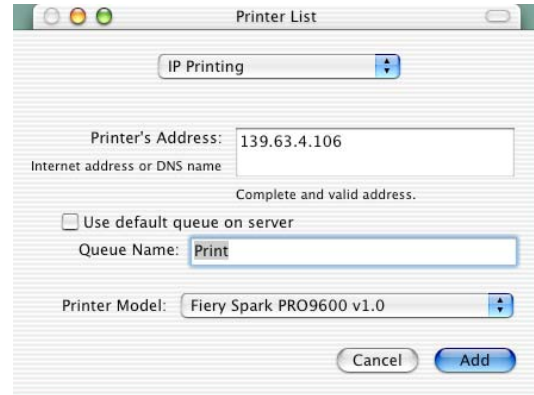
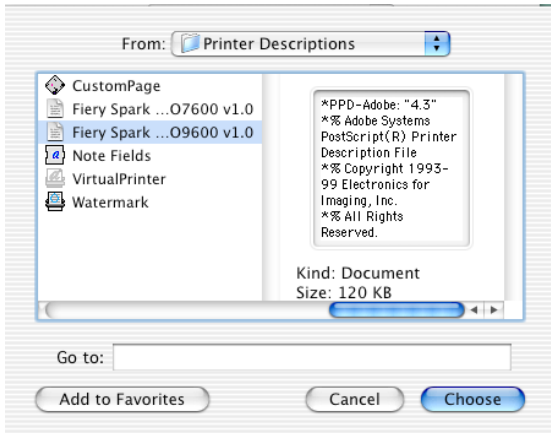
2. Click on the **Add** button and select **IP Printing** from the sub-menu.



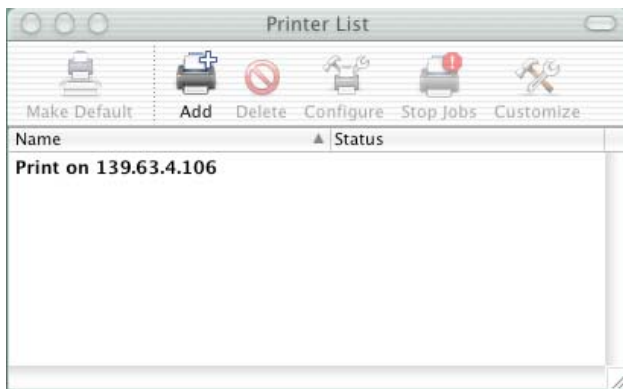
3. Enter the IP Address of the Postscript Server under **Printer's Address**. Uncheck the **Use default queue on server** and type in the queue you wish to add. Click on the **Printer Model** sub-menu and select **Other**.



4. Navigate to the location of your PPD file. After selecting the PPD file it should reflect the name of the printer under the **Printer Model** section. Click on the **Add** button.



5. The Print Center should now show the Queue that you typed along with the IP address.



6. Repeat the process to add your additional queues. Your Mac OS X Client should now be ready to print.

Note: The StylusRIP does not have a separate folder on the CD to select the printer's PPD. In order to select the PPD it must be copied from another client's **Printer Description folder** as shown below (HDD - System folder - Extensions folder - Printer Description folder).

