



**Epson Stylus® Pro WT7900**

# **Network Guide**

---

# *Copyright and Trademarks*

No part of this publication may be reproduced, stored in a retrieval system, or transmitted in any form or by any means, mechanical, photocopying, recording, or otherwise, without the prior written permission of Seiko Epson Corporation. No patent liability is assumed with respect to the use of the information contained herein. Neither is any liability assumed for damages resulting from the use of the information contained herein.

Neither Seiko Epson Corporation nor its affiliates shall be liable to the purchaser of this product or third parties for damages, losses, costs, or expenses incurred by purchaser or third parties as a result of: accident, misuse, or abuse of this product or unauthorized modifications, repairs, or alterations to this product, or (excluding the U.S.) failure to strictly comply with Seiko Epson Corporation's operating and maintenance instructions.

Seiko Epson Corporation and its affiliates shall not be liable against any damages or problems arising from the use of any options or any consumable products other than those designated as Original Epson Products or Epson Approved Products by Seiko Epson Corporation.

## **Info-ZIP copyright and license**

This is version 2007-Mar-4 of the Info-ZIP license. The definitive version of this document should be available at <ftp://ftp.info-zip.org/pub/infozip/license.html> indefinitely and a copy at <http://www.info-zip.org/pub/infozip/license.html>.

Copyright © 1990-2007 Info-ZIP. All rights reserved.

For the purposes of this copyright and license, "Info-ZIP" is defined as the following set of individuals:

Mark Adler, John Bush, Karl Davis, Harald Denker, Jean-Michel Dubois, Jean-loup Gailly, Hunter Goatley, Ed Gordon, Ian Gorman, Chris Herborth, Dirk Haase, Greg Hartwig, Robert Heath, Jonathan Hudson, Paul Kienitz, David Kirschbaum, Johnny Lee, Onno van der Linden, Igor Mandrichenko, Steve P. Miller, Sergio Monesi, Keith Owens, George Petrov, Greg Roelofs, Kai Uwe Rommel, Steve Salisbury, Dave Smith, Steven M. Schweda, Christian Spieler, Cosmin Truta, Antoine Verheijen, Paul von Behren, Rich Wales, Mike White.

Permission is granted to anyone to use this software for any purpose, including commercial applications, and to alter it and redistribute it freely, subject to the above disclaimer and the following restrictions:

- ❑ Redistributions of source code (in whole or in part) must retain the above copyright notice, definition, disclaimer, and this list of conditions.
- ❑ Redistributions in binary form (compiled executables and libraries) must reproduce the above copyright notice, definition, disclaimer, and this list of conditions in documentation and/or other materials provided with the distribution. The sole exception to this condition is redistribution of a standard UnZipSFX binary (including SFXWiz) as part of a self-extracting archive; that is permitted without inclusion of this license, as long as the normal SFX banner has not been removed from the binary or disabled.
- ❑ Altered versions--including, but not limited to, ports to new operating systems, existing ports with new graphical interfaces, versions with modified or added functionality, and dynamic, shared, or static library versions not from Info-ZIP--must be plainly marked as such and must not be misrepresented as being the original source or, if binaries, compiled from the original source. Such altered versions also must not be misrepresented as being Info-ZIP releases--including, but not limited to, labeling of the altered versions with the names "Info-ZIP" (or any variation thereof, including, but not limited to, different capitalizations), "Pocket UnZip," "WiZ" or "MacZip" without the explicit permission of Info-ZIP. Such altered versions are further prohibited from misrepresentative use of the Zip-Bugs or Info-ZIP e-mail addresses or the Info-ZIP URL(s), such as to imply Info-ZIP will provide support for the altered versions.
- ❑ Info-ZIP retains the right to use the names "Info-ZIP," "Zip," "UnZip," "UnZipSFX," "WiZ," "Pocket UnZip," "Pocket Zip," and "MacZip" for its own source and binary releases.

## **Trademarks**

Epson and Epson Stylus are registered trademarks, and Epson Exceed Your Vision is a registered logomark of Seiko Epson Corporation.

General Notice: Other product names used herein are for identification purposes only and may be trademarks of their respective owners. Epson disclaims any and all rights in those marks.

This information is subject to change without notice.

---

# Contents

---

## Chapter 1 Introduction

---

About Your Printer . . . . .	6
About This Guide . . . . .	6
Warnings, Cautions, and Notes . . . . .	7
Operating Environment . . . . .	7
Features of the Network Interface . . . . .	8
Network Interface Operation . . . . .	9
Status lights . . . . .	9
Network connector . . . . .	9
About the Software . . . . .	10
Terms and Concepts . . . . .	10

---

## Chapter 2 Setting Up Your System for Network Printing

---

Overview . . . . .	11
Installing Network Components on Your Computer . . . . .	12
Windows 7 and Windows Vista . . . . .	12
Windows XP . . . . .	14
Setting Up the Network Interface . . . . .	15
Connecting the Network Interface to the Network . . . . .	15
Configuring the Network Interface . . . . .	16
Printing a Network Status Sheet . . . . .	18
Installing the Printer Software . . . . .	18
Adding the Network Port . . . . .	19

---

## Chapter 3 Network Software

---

EpsonNet Config . . . . .	22
About EpsonNet Config . . . . .	22
Accessing the EpsonNet Config User's Guide . . . . .	22
EpsonNet Config with Web Browser . . . . .	23
About EpsonNet Config . . . . .	23
Configuring the Network Interface Using EpsonNet Config With a Web Browser . . . . .	24
Opening Screen . . . . .	27

## *Chapter 4 Troubleshooting*

---

General Problems .....	29
------------------------	----

## *Chapter 5 Uninstalling Software*

---

Windows 7 and Windows Vista .....	31
Windows XP .....	31

## *Index*

---

# Chapter 1

---

## Introduction

---

### About Your Printer

Your printer has a built-in Ethernet interface and can connect anywhere on your network using 10Base-T or 100Base-TX. The built-in Ethernet interface automatically selects the correct link speed and network protocols when it connects to the network.

The network interface supports multiple protocols and automatically detects the protocols being used on your network. You can print from Microsoft® Windows® and Mac OS® X applications.

If you want to configure the network interface to use TCP/IP and SNMP network protocols, use EpsonNet Config. The configuration utility is provided with your printer, and allows you to quickly and easily configure the network interface.

**Note:**

*The EpsonNet Config utility configures the network interface to work only with protocols that exist on your network. This does not imply that you can use all of the above-mentioned protocols on your network or operating system. The protocols that the network interface can use may vary depending on the operating system and the network configuration.*

---

### About This Guide

This *Network Guide* contains information about using the network interface on a network. It includes how to set up the network interface, install the configuration software, and configure your printer and computer network settings.

For information about your printer, see your *User's Guide*.

**Note:**

- ❑ *This guide is written for network administrators, and many of the steps included in this guide require detailed network knowledge and administrator rights.*
- ❑ *The term “network administrator” in this guide refers to the person responsible for maintaining the network. “Administrator” is synonymous with “Supervisor.”*
- ❑ *The term “network interface” refers to the built-in Ethernet interface of the printer in this guide.*
- ❑ *Some screen shots in this guide may list a printer name other than your printer. This does not alter the instructions.*

---

## **Warnings, Cautions, and Notes**



**Warnings**

*must be followed carefully to avoid bodily injury.*



**Cautions**

*must be observed to avoid damage to your equipment.*

**Notes**

*contain important information and useful tips on the operation of your printer.*

---

## **Operating Environment**

The network interface supports the following environments.

<b>OS</b>	<b>Protocol</b>
Windows 7 Windows Vista® Windows XP (Home, Professional, 32-bit, 64-bit)	TCP/IP (using LPR, Standard TCP/IP Port)
Mac OS X 10.6 Mac OS X 10.5 Mac OS X 10.4.11	Bonjour and TCP/IP

---

## *Features of the Network Interface*

- ❑ Connects your Epson printer using a built-in Ethernet interface, which is called the network interface in this manual, to the network.
- ❑ Supports multiple protocols, such as TCP/IP and Bonjour.
- ❑ Supports both 10Base-T and 100Base-TX.
- ❑ Supports DHCP.
- ❑ Supports Automatic Private IP Addressing (APIPA) that assigns an IP address automatically to the network interface even if there is no DHCP server on the network.
- ❑ Supports the Dynamic DNS function.
- ❑ Supports SNMP.
- ❑ Supports SNTP (Simple Network Time Protocol).
- ❑ Supports Bonjour on Mac OS X 10.4.11 or later.

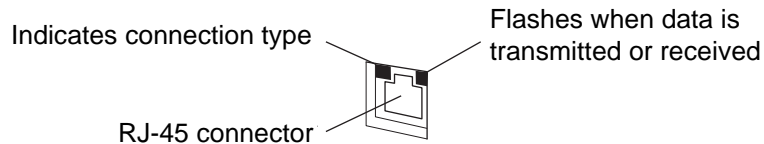


---

## Network Interface Operation

### Status lights

The status lights provide you with important information on the operation of the network interface.



The light on the left indicates whether the network interface is connected to a 10Base-T (green) or 100Base-TX (orange) network.

The light on the right flashes when data is being transmitted or received.

If the light on the left is solid green and the light on the right is off, the printer is not connected to the network.

### Network connector

The RJ-45 connector is used to connect an Ethernet cable to a network. You can use an Ethernet cable for both 10Base-T and 100Base-TX.



**Caution:**

*You must use a Category 5 or higher shielded twisted-pair cable to connect the network interface to a network.*

---

## ***About the Software***

The software CD provided with your printer includes the following network software.

- ❑ EpsonNet Config is a Windows-based configuration utility that allows you to configure the network interface. See “EpsonNet Config” on page 22.
- ❑ EpsonNet Config with Web Browser is a web-based configuration utility that allows you to configure the network interface. See “EpsonNet Config with Web Browser” on page 23.

---

## ***Terms and Concepts***

Configuration -- a prepared set of conditions for proper operation of a device. Configuring the network interface is to prepare it to work with protocols available on a network.

DHCP -- a dynamic host configuration protocol. It is a protocol that assigns dynamic IP addresses to devices on a network.

Protocol -- a rule that controls how data or information is exchanged through a network. Computers and software cannot communicate with each other using different protocols.

TCP/IP -- Transmission Control Protocol/Internet Protocol, a layer of protocols that provides communication between nodes on a network.

## Overview

This section describes the general procedure on how to set up the network interface.

1. Check the network interface operation.

Check the functions and operations of the network interface, such as the status lights. See “Network Interface Operation” on page 9 for details.

2. Install the necessary network components on your computers.

Make sure that the necessary network components (such as TCP/IP) are installed on your computers, and network settings (such as the IP address, subnet mask, etc.) are set.

3. Connect the network interface to the network.

Connect the network interface to the network. See “Connecting the Network Interface to the Network” on page 15 for details.

4. Configure the network interface and install the comm driver.

See “Configuring the Network Interface” on page 16 for details.

5. If necessary, configure the network settings of the network interface using EpsonNet Config.

Configure the network interface using EpsonNet Config; see “About EpsonNet Config” on page 22.

---


## ***Installing Network Components on Your Computer***

Before configuring the network interface and printing from the computer, you need to install the necessary network components (such as TCP/IP) and assign an IP address and subnet mask for your computer, depending on the printing method you want to use. See the section in this chapter appropriate for your operating system.

### ***Windows 7 and Windows Vista***

For Windows 7 and Windows Vista, use the following procedure to install the necessary components.

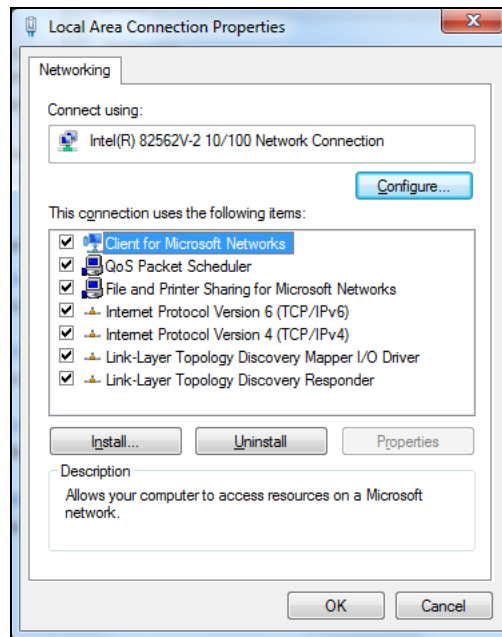
**Note:**

- The Windows operating system CD may be required during the installation.*
  - When using TCP/IP for printing, you need to set the IP address, the subnet mask, and the default gateway of the computer.*
1. Click , click **Control Panel**, and then click **View network status and tasks** or double-click **Network and Sharing Center**.
  2. Click **Local Area Connection** (Windows 7) or **View Status** (Windows Vista), and then click the **Properties** button.

**Note:**

*If you see the User Account Control screen, click **Yes** or **Continue**.*

3. Check if the following network components are in the list. If they are already installed, go to “Connecting the Network Interface to the Network” on page 15.



The following table lists the network components required for configuring the network interface with EpsonNet Config.

EpsonNet Config's setting screens	Necessary components
TCP/IP, SNMP (IP trap)	Internet Protocol (TCP/IP)

The following table lists the network components required for network printing.

Printing method	Necessary components
LPR printing	Internet Protocol (TCP/IP)

4. If the necessary components are not in the list, click **Install** to install them.
5. Double-click **Internet Protocol Version 4 (TCP/IPv4)** on the Local Area Connection Properties dialog box to open the Internet Protocols Version 4 (TCP/IPv4) Properties dialog box. Set the IP address, the subnet mask, etc. and then click **OK**.
6. Restart the computer.

The necessary components are now installed. Go to the section “Connecting the Network Interface to the Network” on page 15.

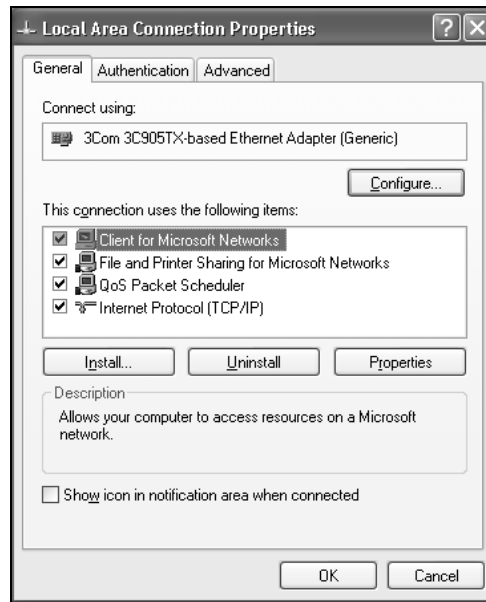
## Windows XP

For Windows XP, use the following procedure to install the necessary components.

**Note:**

*The Windows XP CD may be required during the installation.*

1. Click **Start**, select **Control Panel**, and then select **Network Connections**.
2. Under **LAN or High-Speed Internet**, right-click the **Local Area Connection** icon and choose **Properties**.
3. Check if the following network components are in the list. If they are already installed, go to “Connecting the Network Interface to the Network” on page 15.



The following table lists the network components required for configuring the network interface with EpsonNet Config.

EpsonNet Config's setting screens	Necessary components
TCP/IP, SNMP (IP trap)	Internet Protocol (TCP/IP)

The following table lists the components required for network printing.

Printing method	Necessary components
LPR printing	Internet Protocol (TCP/IP)

4. If the necessary components are not in the list, click **Install** to install them.
5. For LPR printing:  
Double-click **Internet Protocol (TCP/IP)** on the Local Area Connection Properties dialog box to open the Internet Protocols (TCP/IP) Properties dialog box. Set the IP address, the subnet mask, etc. and then click **OK**.
6. Restart the computer.

The necessary components are now installed. Go to the section “Connecting the Network Interface to the Network” on page 15.

---

## *Setting Up the Network Interface*

### *Connecting the Network Interface to the Network*

Follow the instructions below to connect the network interface to the network.

1. Make sure that your printer is turned off.
2. Connect one end of the network cable to the RJ-45 connector on the network interface, and the other end to the network.



**Caution:**

- You must use a Category 5 or higher shielded twisted-pair cable to connect the network interface to prevent malfunction.
- Do not connect or disconnect the network cable when the printer is on.

**Note:**

You can use both 10Base-T and 100Base-TX. When you print a lot of data, we recommend using the highest speed available for your product with light network traffic.

3. Turn on your printer.

Now you can configure the network interface to use TCP/IP on the network and print a network status sheet.

## Configuring the Network Interface

After connecting the printer to the network, you need to configure the network interface for use on a TCP/IP network. The following items are used to make network settings on the printer's control panel (available only when **NETWORK SETUP** is set to **ENABLE**):

Item	Parameter
NETWORK SETUP	DISABLE, ENABLE
IP ADDRESS SETTING	AUTO, PANEL
IP,SM,DG SETTING	IP ADDRESS 000.000.000.000 to 255.255.255.255 (default setting is 192.168.192.168) SUBNET MASK 000.000.000.000 to 255.255.255.255 (default setting is 255.255.255.000) DEFAULT GATEWAY 000.000.000.000 to 255.255.255.255 (default setting is 255.255.255.255)
BONJOUR	ON, OFF
INIT NETWORK SETTING	EXECUTE

Follow these steps to set the IP address, subnet mask, and default gateway from the control panel:

1. Make sure that the printer is turned on, and the LCD displays **READY**.
2. Press the **Menu ►** button on the printer to enter the printer's menu system.
3. Press **▼** to highlight **NETWORK SETUP**, then press **►**.
4. Press **►**, then **▼** to highlight **ENABLE**.
5. Press **OK**. A checkmark (✓) appears next to **ENABLE** to show that it's selected.
6. Press **◀** to go back, then press **▼** to highlight **IP ADDRESS SETTING**.



7. Press **▶**, then press **▲** or **▼** to choose one of the following IP configuration settings:
  - Choose **PANEL** if you would like to set the printer's IP settings manually (recommended).
  - Choose **AUTO** if your network uses a DHCP server to provide IP addresses automatically. The printer's IP address will be obtained from the DHCP server whenever the printer is reset or turned on, but may change as IP addresses are reassigned over time.
8. Press **OK**. A checkmark (✓) appears next to the setting you selected.
9. Press **◀** to go back, then do one of the following:
  - If you selected **PANEL** as the IP address setting, continue with step 10.
  - If you selected **AUTO** as the IP address setting, press the **⏸** Pause/Reset button to exit the printer menu. Then continue with step 14.
10. Press **▼** to highlight **IP,SM,DG SETTING**, then press **▶**. The LCD displays the IP address.
11. Press **▲** or **▼** to change each octet value, then press **▶** to select the next octet. When you have changed the value of the last octet, press **▶**. The LCD displays the subnet mask.
12. Press **▲** or **▼** to change each octet value, then press **▶** to select the next octet. When you have changed the value of the last octet, press **▶**. The LCD displays the default gateway.
13. Press **▲** or **▼** to change each octet value, then press **▶** to select the next octet. When you have changed the value of the last octet, press **OK** and then press the **⏸** Pause/Reset button to exit the printer menu.
14. Turn the printer off then back on again.



**Caution:**

*After turning off the printer, wait until the status lights go off before turning it back on; otherwise the network interface may not work correctly.*

15. See "Printing a Network Status Sheet" below to print a network status sheet and confirm the new IP address, which you'll need during setup. You can also use the EpsonNet Config software to obtain the IP address.

Now you can install the printer software (see “Installing the Printer Software” on page 18).

## *Printing a Network Status Sheet*

1. Make sure that the printer is not printing and the LCD displays **READY**.
2. Press the **Menu ▶** button on the printer’s control panel to enter the printer’s menu system.
3. Press ▼ to highlight **TEST PRINT**, then press ▶.
4. Press ▼ to highlight **NETWORK STATUS SHEET**, then press ▶.
5. Press **OK** to print the network status sheet.

---

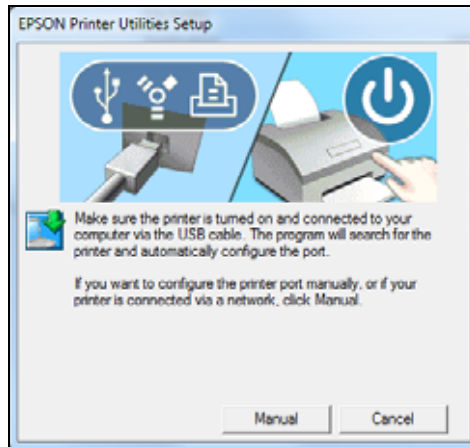
## *Installing the Printer Software*

To print to the network printer, you need to install the printer driver (printer software) on your computer. To install your software, follow these steps:

1. Insert the printer software CD in your CD or DVD drive.
2. If the AutoPlay window appears, click **Run Setup.exe**. If you see the User Account Control screen, click **Yes** or **Continue**.
3. Click **Install**.



4. When you see a screen like this one, click the **Manual** button.




5. Select **LPT1:** as the printer port, then click **OK**.
6. Follow the on-screen instructions to install all necessary software and manuals, place a link to the Epson Professional Imaging website on your desktop, and register your printer.
7. When you're done, click **Exit** and eject the CD. Restart your computer if prompted.

See "Adding the Network Port" to create a network port for your printer.

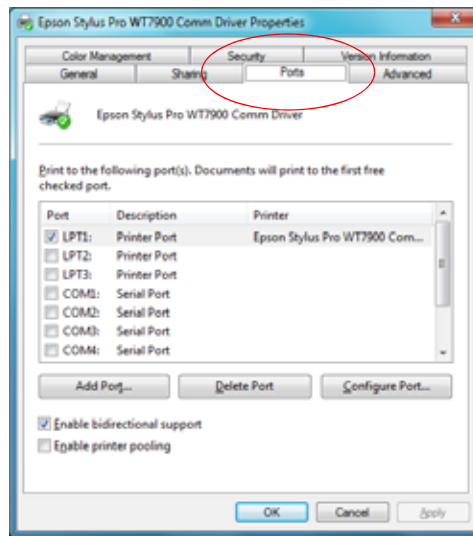
---

## *Adding the Network Port*

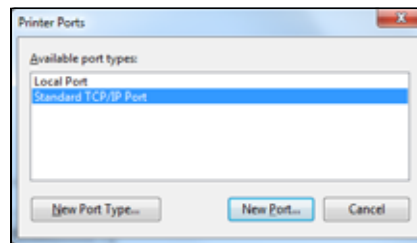
After installing the printer software on your computer, you need to add the network port. Follow these steps:

1. Click **Start** or , click **Control Panel**, and then click **View Devices and Printers** (Windows 7), **Printer** or **Printers** (Windows Vista), or **Printers and Faxes** (Windows XP).
2. Right-click the Epson Stylus Pro WT9700 Comm Driver and select **Printer Properties** or **Properties**.

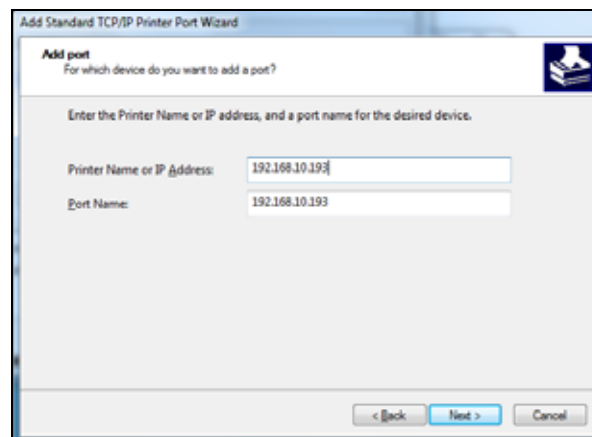
3. Click the **Ports** tab, then click **Add Port**.



4. Select **Standard TCP/IP Port**, then click the **New Port** button.



5. When the printer port wizard opens, click **Next**.
6. Enter the printer's IP address, shown on the network status sheet, in the Printer Name or IP Address text box. Then click **Next**.



**Note:**

*If you get the IP address from the printer's control panel, be sure to omit any leading zeros when entering it in the screen above. Example: 192.168.010.193 should be entered 192.168.10.193.*

7. On the next screen, click **Finish**.

**Note:**

*If the finish screen does not appear, the IP address may be incorrect or there may not be a good Ethernet connection. Check the IP address and the status light on the printer.*

You can now use the printer on your network.

## Chapter 3

---

### **Network Software**

This chapter explains how to use the network software provided with your printer.

---

### **EpsonNet Config**

#### **About EpsonNet Config**


EpsonNet Config allows administrators to configure the network interface.

**Note:**

*Be sure to use EpsonNet Config included on the software CD shipped with your printer.*

#### **Accessing the EpsonNet Config User's Guide**

The EpsonNet Config *User's Guide* contains detailed information on EpsonNet Config. Follow the steps below to access the EpsonNet Config *User's Guide*.

1. Click  or **Start**, point to **Programs** or **All Programs**, select **EpsonNet**, and then select **EpsonNet Config**. Click **EpsonNet Config** to start it.
2. From the Help menu, select **EpsonNet Config Help**.

The EpsonNet Config *User's Guide* appears. Click the links on the left side of the screen to get information on using EpsonNet Config.

---

## *EpsonNet Config with Web Browser*

### *About EpsonNet Config*

EpsonNet Config with Web Browser is a Web-based utility designed to configure the printer for use on a network.

By typing the IP address of the network interface for the URL in your browser, you can start EpsonNet Config to allow you to configure the network interface.

**Note:**

*You must first set the IP address before using EpsonNet Config with Web Browser. See "Configuring the Network Interface" on page 16.*

### *Supported Web Browsers*

The following web browsers are supported:

- Microsoft Internet Explorer® version 5.0 or later
- Netscape Navigator version 7.0 or later
- Firefox version 2.0 or later

### *About Web Browser Settings*

When running EpsonNet Config with Web Browser, do not use a proxy server to access the Internet. If the **Access the Internet using a proxy server** checkbox is selected, you cannot use EpsonNet Config with Web Browser. Follow steps below to disable the Access the Internet using a proxy server setting.

1. Right-click the **Internet Explorer** icon on the desktop, and then select **Properties**.
2. Click the **Connection** tab.
3. Uncheck the **Access the Internet using a proxy server** checkbox.

## Configuring the Network Interface Using EpsonNet Config With a Web Browser

After you have assigned an IP address to the network interface using the printer's control panel, EpsonNet Config, or a DHCP server, you can configure the network interface using EpsonNet Config with Web Browser.

**Note:**

- ❑ A Web browser must be installed on your computer.
- ❑ TCP/IP must be correctly set for the computer and the network interface.

Follow the steps below to change the IP address using EpsonNet Config.

1. Turn on your printer.
2. Run EpsonNet Config in one of the following ways:
  - ❑ Run EpsonNet Config. Select the printer you want to configure from the list and then click **Launch Browser**.
  - ❑ Open your browser, and then type in the IP address of the network interface directly.

http://IP address of network interface/

Example: **http://192.168.100.201/**

**Note:**

*To check the IP address of the network interface, use EpsonNet Config. See "About EpsonNet Config" on page 22 for details. You can also print a Network Status Sheet from the printer's control panel. See "Printing a Network Status Sheet" on page 18 for instructions.*

3. Click **TCP/IP** under Network on the Configuration menu to display the TCP/IP setting screen.
4. Select a method for acquiring the IP address. When you select **Auto**, DHCP becomes available and assigns an IP address automatically. If you want to set the IP address manually, select **Manual** (preferred).



**Note:**

- The network administrator must check any changes made to the IP address settings.
  - When **Auto** is selected, DHCP becomes available. A DHCP server/router must be available on your network.
  - If **Set Using Automatic Private IP Addressing (APIPA)** is enabled, a private IP address is automatically assigned to the network interface even when there are no DHCP servers on your network.
  - If the Dynamic DNS function is not supported, we recommend that you select **Manual** and then enter an IP address. This is because if you select **Auto**, the IP address of the network interface changes every time you turn on the printer so that you need to change the printer port setting accordingly.
5. To assign an IP address manually, enter the IP address, the subnet mask, and the default gateway. Be sure the IP address does not conflict with any other devices on the network.

**Note:**

*If there is a server or a router functioning as a gateway, enter the IP address of the server or the router for the gateway address. If there is no gateway, leave the default values.*

6. If you want to get a private address between 169.254.1.1 and 169.254.254.254 automatically when an IP address cannot be obtained by the DHCP server, leave the **Set Using Automatic Private IP Addressing (APIPA)** setting set to **Enable**; otherwise, select **Disable**.
7. Select **Enable** for **Acquire DNS Server Address Automatically** if you want to acquire the DNS server address using the DHCP server.

If you want to enter the DNS server address manually, select **Disable** and then enter the IP address of the DNS server.

8. Select **Enable** for **Acquire Host Name and Domain Name Automatically** if you want to acquire the host name and the domain name using the DHCP server.

If you want to specify manually, enter the host name and the domain name in the text boxes.

9. Select **Enable** for **Register Network Interface Address to DNS Server** if you want to register the host name and domain name to the DNS server through the DHCP server that supports Dynamic DNS.

If you want to register the host name and the domain name directly to the DNS server, select **Enable** for **Register Network Interface Address Directly to DNS Server**.

10. Select **Enable** or **Disable** for **Use Universal Plug and Play**. Select **Enable** if you want to use the Universal Plug and Play function.
11. Change the default Universal Plug and Play device name, if desired. This device name is used for Windows that supports the Universal Plug and Play function.
12. Select **Enable** or **Disable** for **Use Bonjour**. If you select **Enable**, enter the Bonjour Name and the Bonjour Printer Name. If your network environment supports DHCP, you can use the printer on the network just by enabling this setting.
13. Click **Submit** and enter the password, if necessary, to update the settings.

**Note:**

*If you have set the Administrator Name on the Administrator screen, enter the administrator name for the user name.*

14. When the message "Configuration change is complete!" appears on your screen, the update is complete. Do not exit the Web browser and do not send a job to the printer until this message appears. Follow the on-screen instructions to reset the printer.

**Note:**

- Since the new IP address becomes available after the printer is reset, you need to restart EpsonNet Config by entering the new IP address.*
- Only changes on the page where you press the **Submit** button take effect.*

## Opening Screen

Any user can access Epson NetConfig with Web Browser by typing the IP address of the network interface for the URL in your browser.

### Top Menu Bar

Home	Links to the opening screen.
Favorite	Links to a Web site previously defined by the administrator.
Help	Links to Help.
About EpsonNet Config	Links to the copyright and version information for EpsonNet Config.
EPSON Logo	Links to the Epson Web site ( <a href="http://www.epson.com">http://www.epson.com</a> ).

### Menu

<b>Information - Printer</b>	
Device	Displays the printer device information.
Consumables	Displays the consumables information.
<b>Information - Network</b>	
General	Displays the network interface information.
TCP/IP	Displays information about TCP/IP.
SNMP	Displays information about SNMP.
Access Control	Displays information about Access Control.
Timeout	Displays information about Timeout.
Time	Displays information about Time.
EDM	Displays the EDM Agent information.
<b>Configuration - Network</b>	
Ethernet	Configure the desired settings for Ethernet.
TCP/IP	Configure the desired settings/method for TCP/IP.
SNMP	Configure the desired settings for SNMP.
Access Control	Configure the desired settings for Access Control.
Timeout	Configure the desired settings for Timeout.
Time	Configure the desired settings for Time.

<b>Configuration - Optional</b>	
Administrator	Type the name of the administrator and a link to a favorite Web site.
Reset	Resets the printer and returns to the default settings.
Password	Set the password to protect settings.

## Chapter 4

# Troubleshooting

---

## General Problems

---

Cannot configure the network interface or cannot print from the network.

Cause	What to do
The printer settings or network settings may be wrong.	First, check to see if you can print a status sheet, as described in "Printing a Network Status Sheet" on page 18. If you can print a status sheet, check the network settings.

Cannot print even if you have assigned the IP address to the computer and the printer.

Cause	What to do
You have assigned an IP address to the computer manually, but you assigned the IP address to the printer by Automatic Private IP Addressing (APIPA).	Use EpsonNet Config or the printer's control panel to assign the printer an IP address that belongs to the same segment as the computer.

Unable to start EpsonNet Config.

Cause	What to do
You have added or deleted protocols after installing EpsonNet Config.	Uninstall EpsonNet Config and then reinstall it. See "Uninstalling Software" on page 31.

The message "EpsonNet Config cannot be used because no network is installed." appears when you start EpsonNet Config.

Cause	What to do
TCP/IP is not installed on the computer.	Install the TCP/IP protocol.
TCP/IP is installed on the computer, but its IP address is not set correctly.	Set a correct IP address for the computer.

The message “Could not complete communicating configuration data” appears when you send settings to the network interface.

Cause	What to do
This may happen when using a dial-up router.	Run Command Prompt from the computer on which EpsonNet Config is installed, and then enter the following command:  Format: >ROUTE_ADD_the IP address of the network interface_ the IP address of the computer (the under bar represents one space)  Example: >ROUTE ADD 192.168.192.168 22.33.44.55.

Unable to start EpsonNet Config with Web Browser.

Cause	What to do
You have not set the IP address for the network interface.	Set the IP address for the network interface using EpsonNet Config or the printer’s control panel. You can check the IP address by printing a network status sheet, see “Printing a Network Status Sheet” on page 18.

The Model Name and IP Address do not appear in the EpsonNet Config dialog box.

Cause	What to do
If a valid IP address is not set, the items indicated in the dialog box mentioned above may not appear.	Set a valid IP address.  Refresh the status by selecting <b>Refresh</b> from the View menu.  Increase the length of time before a timeout. To do this, select <b>Options</b> from the Tool menu, and then select <b>Timeout</b> . Note that doing so can cause EpsonNet Config to slowly.

## Chapter 5


---

### ***Uninstalling Software***

Follow the steps below to uninstall the network software.

---

#### ***Windows 7 and Windows Vista***

1. Click , click **Control Panel**, and then click **Uninstall a program**.
2. Select the utility you want to uninstall, and then click the **Uninstall/Change** button.
3. Follow the on-screen instructions to complete uninstallation.

---

#### ***Windows XP***

1. Click **Start**, click **Control Panel**, and then click **Add or Remove Programs**.
2. Click the **Change or Remove Programs** icon.
3. Select the utility you want to uninstall, and then click the **Change/Remove** button.
4. Follow the on-screen instructions to complete uninstallation.

---

# *Index*

## **A**

Automatic Private IP Addressing (APIPA),  
25

## **C**

Cable, network, 9

Configuring network interface  
control panel, 16 to 17  
EpsonNet Config with Web Browser,  
24 to 26

Connector, network, 9

Control panel, configuring network  
interface, 16 to 17

## **D**

Default gateway, 17, 25

DHCP, 10

Dynamic DNS, 25

## **E**

EpsonNet  
Config (Web Browser), 23

EpsonNet Config  
Windows, 22

EpsonNet Config with Web Browser  
password, 28  
settings, 27 to 28  
using, 24 to 28

## **I**

Installing printer driver  
Windows, 18 to 19

IP address  
control panel, 16 to 17  
EpsonNet Config with Web Browser,  
24 to 26

## **L**

Lights, status, 9

## **N**

Network  
cable, 9  
connector, 9  
printing status sheet, 18  
protocols, 6

Network interface  
configuring, 16 to 17  
connecting to network, 15 to 16

Network port  
Windows, 19 to 21

Network software, uninstalling, 31

## **O**

Operating environment, 7

## **P**

Password, EpsonNet Config with Web  
Browser, 28

Printer driver  
installing in Windows, 18 to 19

Problems, solving, 29 to 30

Protocols, 7

## **R**

Resetting network interface, 28

RJ-45 connector, Network  
connector, 9

Router, 25

## **S**

Setting the IP address, 24

Software, uninstalling, 31

Status lights, 9



Status sheet, printing, 18

Subnet mask, 17, 25

## *T*

TCP/IP, 24

definition, 10

setting up in Windows, 12 to 15

Troubleshooting, 29 to 30

## *U*

Uninstalling network software, 31

Universal Plug and Play, 26

## *W*

Windows

adding network port, 19 to 21

installing printer driver, 18 to 19

network settings, 12 to 15