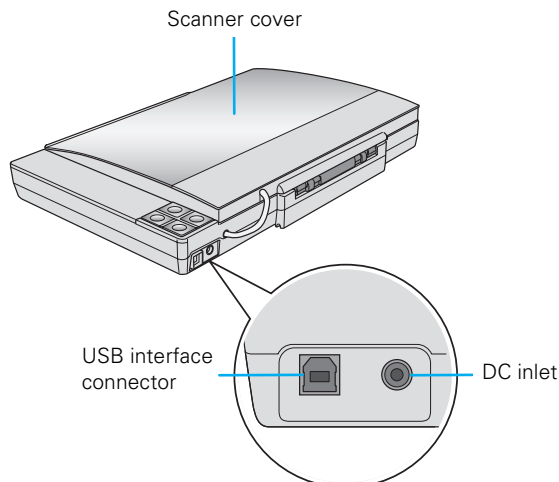
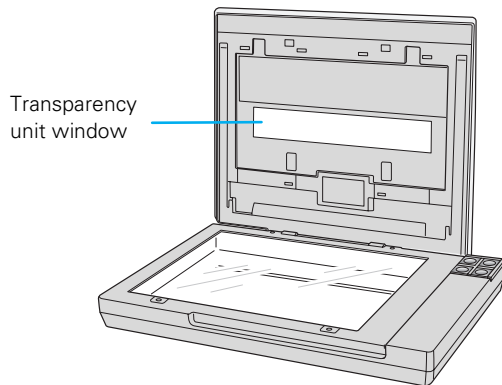
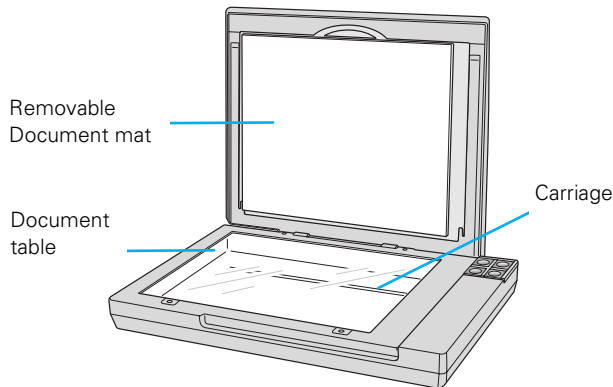
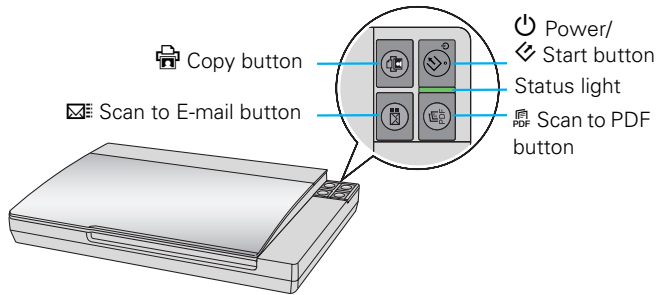
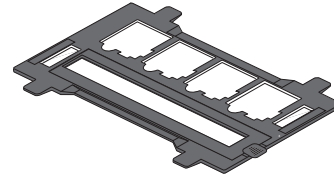


Scanner Parts



Film holder



Scanner Specifications

General

| | |
|----------------------|---|
| Scanner type | Flatbed color |
| Photoelectric device | Epson MatrixCCD® (12-line sensor) |
| Effective pixels | 40,800 × 56,160 pixels at 4800 dpi |
| Document size | Documents or photos: 8.5 × 11.7 inches (216 × 297 mm) US letter or A4 size |
| | Film or slides: 35mm film strips (6 frames at a time); 35mm slides (4 slides at a time) |
| Scanning resolution | 4800 dpi (main scan) 9600 dpi with Micro Step Drive™ (sub scan) |
| Output resolution | 50 to 6400, 9600, and 12800 dpi (50 to 6400 dpi in 1 dpi increments) |
| Image data | 16 bits per pixel per color internal 16 bits per pixel per color external |
| Interface | One USB 2.0 Hi-Speed port (USB 1.1 compatible) |
| Light source | White cold cathode fluorescent lamp |

Mechanical

| | |
|------------|--|
| Dimensions | Width: 16.9 inches (430 mm) Depth: 11 inches (280 mm) Height: 2.2 inches (57 mm) |
| Weight | Approx. 5.7 lb (2.6 kg) |

Electrical

Note:

Check the label on the AC adapter or on the back of the scanner for voltage information.

Scanner

| | |
|-------------------|---|
| Rated voltage | DC 13.5 V |
| Rated current | 1.5 A |
| Power consumption | 16.5 W operating 14 W stand-by mode 3.6 W sleep mode 0.5 W power off |

AC Adapter (A391UC)

| | |
|----------------------|-----------------|
| Rated input voltage | AC 100 to 120 V |
| Rated input current | 0.6 A |
| Rated frequency | 50 to 60 Hz |
| Rated output voltage | DC 13.5 V |
| Rated output current | 1.5 A |

Environmental

| | | |
|----------------------|---|---------------------------------|
| Temperature | Operating | 50 to 95 °F (10 to 35 °C) |
| | Storage | -13 to 140 °F (-25 to 60 °C) |
| Humidity | Operating | 10 to 80%, without condensation |
| | Storage | 10 to 85%, without condensation |
| Operating conditions | Ordinary office or home conditions. Avoid operating the scanner in direct sunlight, near a strong light source, or in extremely dusty conditions. | |

USB Interface

| | |
|--------------------|--|
| Interface type | Universal Serial Bus Specification Revision 2.0 |
| Interface standard | Full Speed mode (12 Mbits per second) and Hi-Speed mode (480 Mbits per second) of Universal Serial Bus Specification Revision 2.0. |
| Connector type | One Type B port |

Standards and Approvals

Scanner





| | |
|-----|---|
| EMC | FCC Part 15 Subpart B Class B CAN/CSA-CEI/IEC CISPR 22 |
|-----|---|

AC Adapter

| | |
|--------|---|
| Safety | UL60950-1 CAN/CSA-22.2 No. 60950-1-03 |
| EMC | FCC Part 15 Subpart B Class B CAN/CSA-CEI/IEC CISPR 22 Class B |

Using the Scanner Buttons

Before using the scanner buttons, make sure you have installed Epson Scan and the other software that came with the scanner. For details on using the buttons, see the on-screen *User's Guide*.

| Button | Function |
|---|--|
|  Power/Start | Turns the scanner on if pressed once while the scanner is off. Epson Scan starts if pressed once while the scanner is on. Turns the scanner off if held down for 3 seconds while the scanner is on. (You cannot turn the scanner off when the scanning software is running.) |
|  Copy | The Copy Utility starts. |
|  Scan to E-mail | Epson Scan automatically scans, then the Send File Via E-mail window appears. |
|  Scan to PDF | The Scan to PDF window appears. |

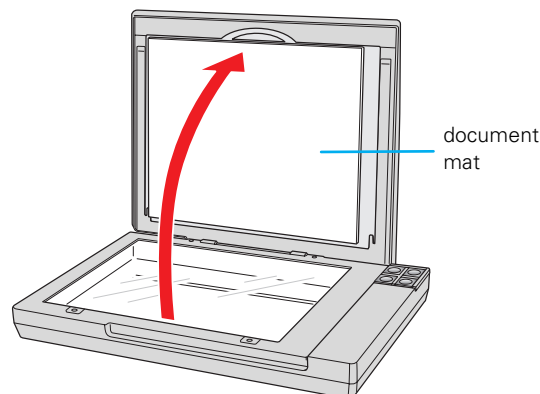
Placing Documents or Photos

Caution:

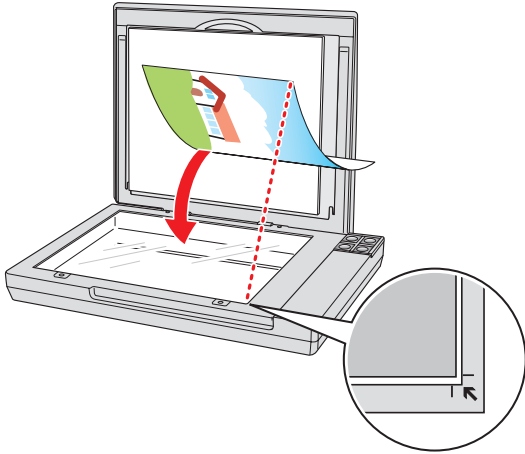
Do not place heavy objects on the document table glass and do not press the glass with too much force.

1. Open the scanner cover.

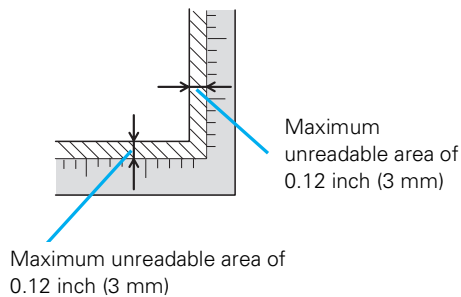
Make sure the document mat is installed inside the cover. If it is not installed, see page 6 for instructions.



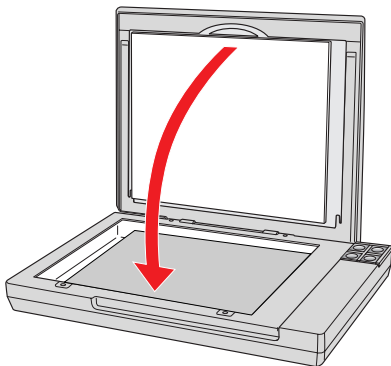
- Place your document or photo face-down on the document table. Make sure the upper left corner of the document or photo is against the front right corner of the scanner, next to the arrow mark.



An area 0.12 inch (3 mm) from the horizontal and the vertical sides of the scanner glass cannot be scanned. If you place a document in the corner of the document table, move it up and in slightly to avoid cropping.



- If you are scanning multiple photos at once, position each photo at least 0.8 inch (20 mm) apart from the others.
- Close the scanner cover gently so that your original does not move.



Note:

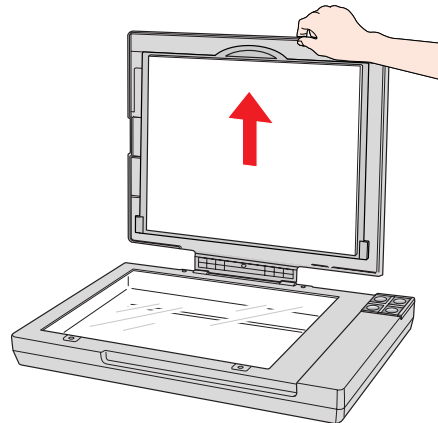
Always keep the document table clean.

Do not leave photos on the document table for an extended period of time as they may stick to the glass.

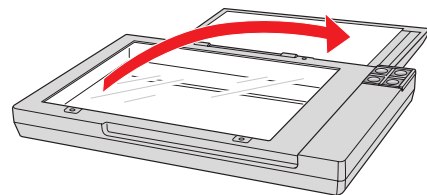
Placing Large or Thick Documents

When you scan a large or thick document, you can open the scanner cover all the way, so that it lies flat behind the scanner.

- Open the scanner cover.
- Pull the scanner cover straight up.



- Lay the cover down flat behind the scanner.



Note:

When scanning with the scanner cover open, gently press down on your document to flatten it.

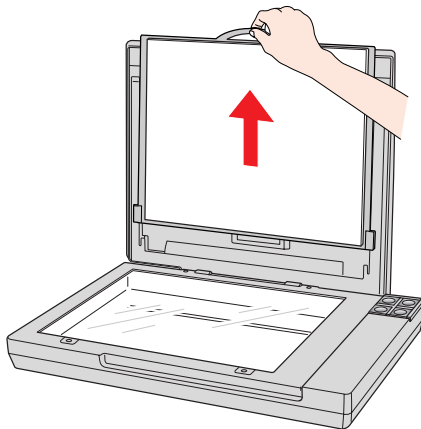
- When you are finished scanning, replace the scanner cover.

Placing Film or Slides

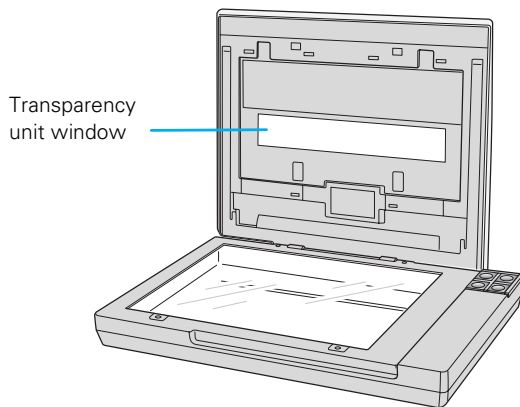
Removing the Document Mat

To scan film strips or slides, you need to remove the document mat from the scanner cover. This uncovers the transparency unit window so your scanner can use it to scan your film or slides.

1. Open the scanner cover and gently slide up the document mat to remove it.



2. Use a soft microfiber cloth to wipe the transparency unit window and the document table before placing your film or slides.

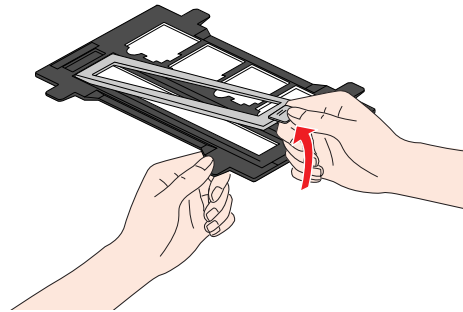


To place film for scanning, see the next section.

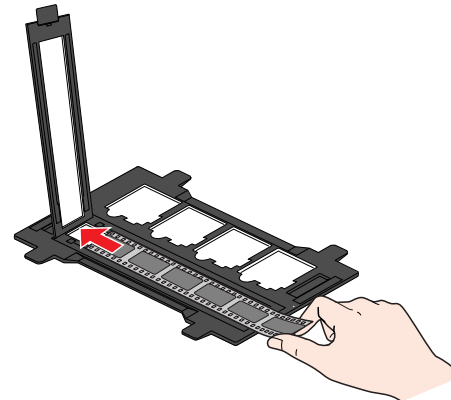
To place slides for scanning, see page 5.

Placing Film in the Holder

1. Open the cover of the 35mm film strip holder.



2. Slide your film strip all the way into the film holder with the shiny base side facing down. Your images and any wording on the film strip should appear backwards on the side that faces up. You can scan up to 6 standard 35mm images per film strip.



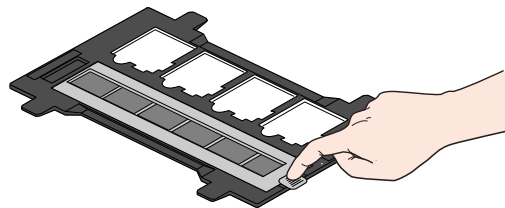
Note:

Hold the edge of the film gently when touching the film; otherwise you may damage the film.

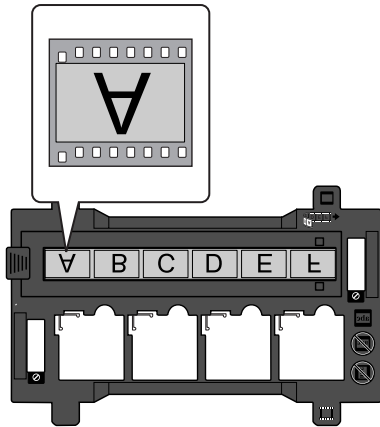
Make sure the white stickers on the back of the film holder and the areas around them are not scratched, dusty, or covered in any way. If the areas are obscured, the scanner may have trouble recognizing your film.

Do not cover the small holes or slots in the film holder.

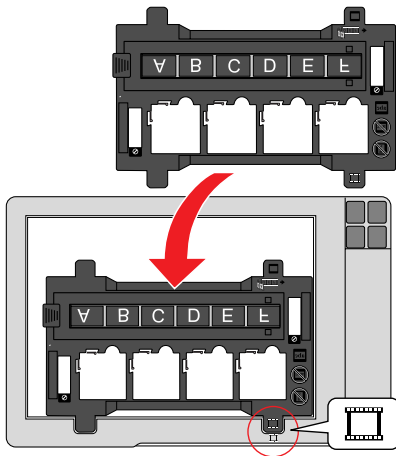
3. Close the cover and press it down until you hear a click. Make sure the cover is properly seated and closed all the way.



4. Make sure the film strip is placed as shown.



5. Place the film holder on the document table so that it is aligned as shown. Make sure the tab with the film icon on the film holder fits into the area with the same icon on the scanner.



6. Make sure you removed the document mat. See page 4.
7. Close the scanner cover.

When you are finished scanning film, be sure to replace the document mat before scanning documents or photos. See page 6.

Placing Slides in the Holder

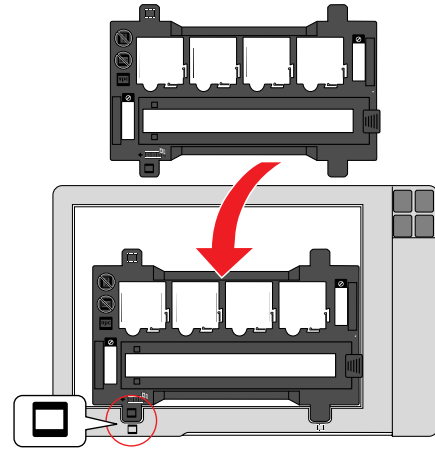
You can scan up to four 35mm slides at a time using the slide portion of the film holder.

Note:

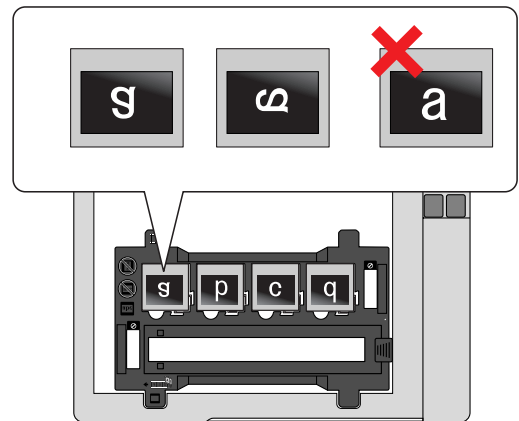
Make sure the white stickers on the back of the film holder and the areas around them are not scratched, dusty, or covered in any way. If the areas are obscured, the scanner may have trouble recognizing your slides.

Do not cover the small holes or slots in the film holder.

1. Place the film holder on the document table so that it is aligned as shown. Make sure the tab with the slide icon on the film holder fits into the area with the same icon on the scanner.



2. Place up to four slides in the film holder with the shiny base side facing down. Your images should appear backwards on the side that faces up. Your images should be oriented as shown.



Note:

Make sure you place the long edge of the slide in the film holder as shown above, for both landscape and portrait-oriented photos.

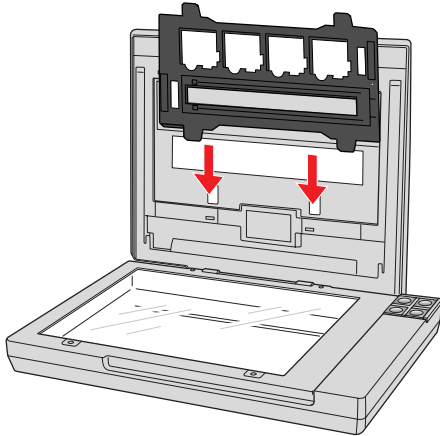
3. Make sure you removed the document mat. See page 4.
4. Close the scanner cover.

When you are finished scanning slides, be sure to replace the document mat before scanning documents or photos. See page 6.

Storing the Film Holder

When you are not using the film holder, you can store it inside the scanner cover.

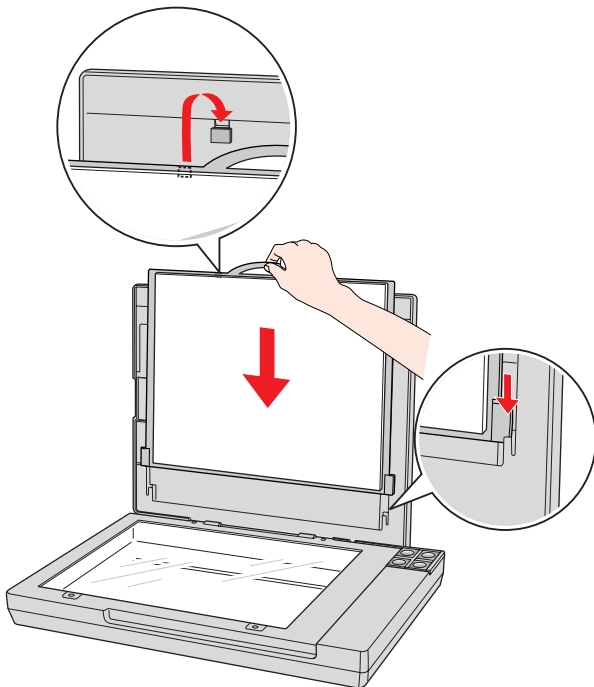
1. Open the scanner cover and remove the document mat. For instructions, see page 4.
2. Slide the film holder into the scanner cover.



3. Replace the document mat. See the next section for instructions.

Replacing the Document Mat

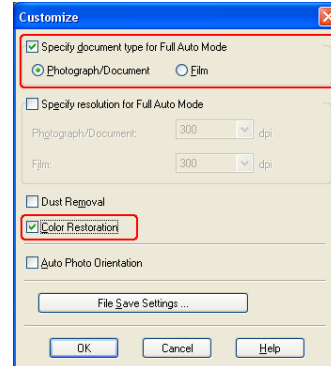
Replace the document mat by sliding it into the notches in the scanner cover. Make sure the white surface faces outwards.



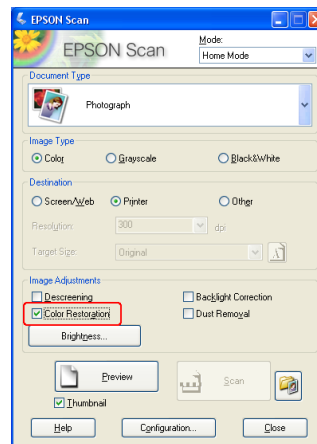
Scanning and Restoring Photos

Using the Color Restoration feature in Epson Scan, you can transform old, faded, or badly exposed photos into ones with true-to-life color. You can restore printed photos, negative film, or slides automatically as you scan them.

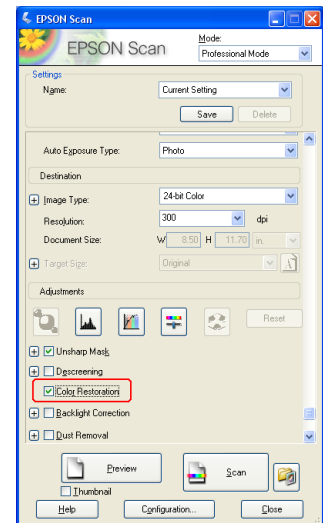
You can use Color Restoration in Epson Scan's Full Auto, Home, or Professional Mode. For detailed steps, see the on-screen *User's Guide*.



Full Auto Mode



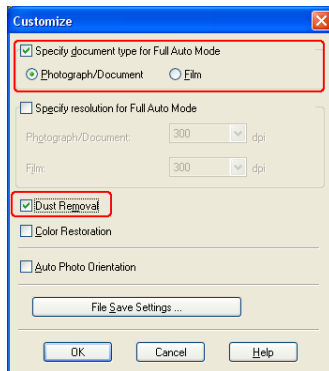
Home Mode



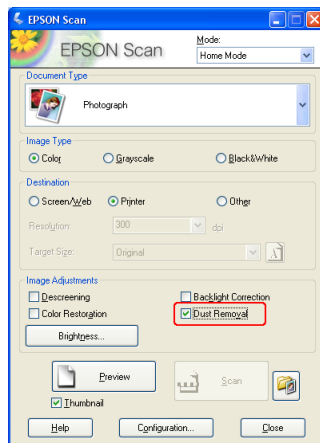
Professional Mode

Removing Dust From Photos, Film, or Slides

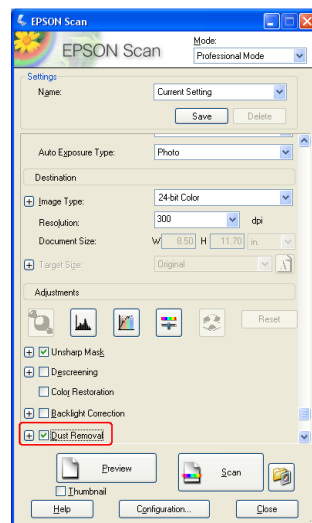
Using the Dust Removal feature in Epson Scan's Full Auto, Home, or Professional Mode, you can virtually "clean" the dust marks from printed photos, film, or slides as you scan them. For detailed steps, see the on-screen *User's Guide*.



Full Auto Mode



Home Mode



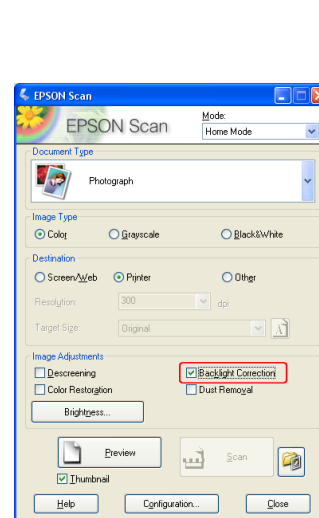
Professional Mode

Fixing Backlit Photos

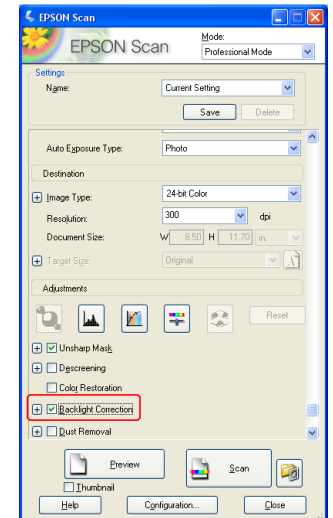
Using the Backlight Correction feature in Epson Scan's Home or Professional Mode, you can remove shadows from photos that have too much background light. You can fix printed photos, film, or slides automatically as you scan them. For detailed steps, see the on-screen *User's Guide*.

Note:

Backlight Correction is not available in Full Auto Mode.



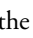
Home Mode



Professional Mode

Reading the Status Light

If an error occurs, the scanner stops operating and the status light flashes red. This indicates the scanner is not connected to your computer properly or your software is not fully installed. See the *Start Here* sheet that came with your scanner for instructions on installing the scanner software and connecting the scanner to your computer.

If the suggestions above don't help, press the  Power button for 3 seconds to turn off the scanner, then turn it on again.


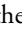


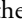
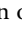
If the Status light is still flashing:

- The scanner may be malfunctioning.
- The scanner lamp may need to be replaced.

Contact Epson. See the on-screen *User's Guide* for details.

Transporting the Scanner

Before you transport the scanner for a long distance or store it for an extended period of time, the scanner's carriage needs to be in the center position to prevent damage.

1. If the carriage is not in the center position of the scanner, follow these steps.
 - If the scanner is turned on and connected to your computer, press and hold the  Scan to E-mail and  Copy buttons simultaneously until the carriage moves to the center of the scanner.
 - If the scanner is turned off, press the  Power button to turn on the scanner, connect it to your computer, and wait about 15 seconds for the computer to recognize the scanner. Then press and hold the  Scan to E-mail and  Copy buttons simultaneously until the carriage moves to the center of the scanner.
2. Press the  Power button for 3 seconds to turn off the scanner, then unplug the AC adapter.
3. Disconnect the USB cable from the scanner.
4. Attach the packing materials that came with the scanner, then repack the scanner in its original box or a similar box that fits the scanner snugly.

Related Documentation

Note:

The availability of manuals varies by location.

| | |
|-----------|---|
| CPD-23664 | Epson Perfection V200 Photo <i>Start Here</i> sheet (English) |
| CPD-23667 | Epson Perfection V200 Photo <i>Start Here</i> sheet (English/French/Spanish) |
| CPD-23666 | Epson Perfection V200 Photo <i>Notices</i> booklet (English) |
| CPD-23669 | Epson Perfection V200 Photo <i>Notices</i> booklet (English/French/Spanish) |
| CPD-23665 | Epson Perfection V200 Photo Scanner Software CD-ROM (English), (includes on-screen <i>User's Guide</i>) |
| CPD-23668 | Epson Perfection V200 Photo Scanner Software CD-ROM (English/French/ Spanish), (includes on-screen <i>User's Guides</i>) |

