

Epson Stylus® Photo R220

Printer Basics

Copyright Notice

All rights reserved. No part of this publication may be reproduced, stored in a retrieval system, or transmitted in any form or by any means, electronic, mechanical, photocopying, recording, or otherwise, without the prior written permission of Seiko Epson Corporation. The information contained herein is designed only for use with this Epson product. Epson is not responsible for any use of this information as applied to other equipment.

Neither Seiko Epson Corporation nor its affiliates shall be liable to the purchaser of this product or third parties for damages, losses, costs, or expenses incurred by purchaser or third parties as a result of: accident, misuse, or abuse of this product or unauthorized modifications, repairs, or alterations to this product, or (excluding the U.S.) failure to strictly comply with Seiko Epson Corporation's operating and maintenance instructions.

Seiko Epson Corporation shall not be liable for any damages or problems arising from the use of any options or any consumable products other than those designated as Original Epson Products or Epson Approved Products by Seiko Epson Corporation.

Responsible Use of Copyrighted Materials

Digital cameras, scanners, and ink jet printers, like conventional photocopiers and cameras, can be misused by improper copying or printing of copyrighted material. While some countries' laws permit limited copying of copyrighted material in certain circumstances, those circumstances may not be as broad as some people assume. Epson encourages each user to be responsible and respectful of the copyright laws when using digital cameras, scanners, and ink jet printers.

Trademarks

Epson, Epson Stylus, MicroWeave, and Epson Photo Stickers are registered trademarks of Seiko Epson Corporation.

BorderFree, RPM, and ColorLife are registered trademarks, PhotoEnhance and Print Lab are trademarks, and Epson Connection, Epson Store, and SoundAdvice are service marks of Epson America, Inc.

General Notice: Other product names used herein are for identification purposes only and may be trademarks of their respective owners. Epson disclaims any and all rights in those marks.

Contents

Welcome	5
Exif Print	5
About Your Documentation	6
Printing From Start to Finish	7
Loading Paper	7
Printing in Windows	9
Selecting Default Settings	12
Printing With a Macintosh	13
Selecting the Correct Paper Type	17
Printing Borderless Photos	18
Windows	19
Macintosh	20
Printing on CDs and DVDs	22
Cleaning the Rollers	22
Inserting a CD or DVD	23
Designing CDs and DVDs	25
Printing Your Design	27
Adjusting the Print Position	28
Adjusting the Print Density	29
Maintaining Your Printer	31
Cleaning the Print Head	31
Running the Head Cleaning Utility	31
Replacing an Ink Cartridge	33
Checking the Ink Supply	33
Purchasing Ink Cartridges	35
Ink Cartridge Precautions	35
Removing and Installing Ink Cartridges	36

Aligning the Print Head 39

Cleaning the Printer 41

Transporting the Printer 42

Solving Problems 43

Printer Parts 43

Diagnosing Printer Problems 44

 Running a Printer Check 45

Problems and Solutions 46

 Setup and Software Installation Problems 46

 Printer Problems 47

 Print Quality Problems 48

 Problems With Paper Feeding 50

 CD/DVD Printing Problems 51

 Miscellaneous Printout Problems 52

Uninstalling Printer Software 53

 Windows 53

 Macintosh 54

Where To Get Help 54

Requirements and Notices 57

Windows System Requirements 57

Macintosh System Requirements 57

Important Safety Instructions 58

 Ink Cartridge Safety Instructions 59

FCC Compliance Statement 60

Declaration of Conformity 61

ENERGY STAR Compliance 61

Epson America, Inc. Limited Warranty 62

Index 65

Welcome

Your Epson Stylus® Photo R220 is a full-featured photo and CD/DVD printer. You get outstanding prints from these advanced features:

- Epson's exclusive 6-color ink technology lets you achieve fine shadow detail, dazzling highlights, and excellent fill across a wide range of colors. Genuine Epson® ink and papers create long-lasting and water-resistant prints.
- CD and DVD printing on ink jet-printable CDs and DVDs.
- True BorderFree® frame-ready prints on select 4 × 6, 5 × 7, 8 × 10, and letter-size papers.
- A standard rear USB port plus a front USB port for quick connection to your laptop.

Note:

The front USB port does not support digital cameras or other USB devices.

Exif Print

The Exif (Exchangeable Image File) Print format includes information about your digital camera settings in JPEG/TIFF files so your printer and application can use them to create accurate print settings. Most digital cameras store Exif Print information such as shutter speed, metering, flash, exposure settings, resolution, and lens use in the JPEG/TIFF image file. Your printer uses the information to ensure the most accurate image reproduction.

About Your Documentation

To set up your printer and install its software, see the *Start Here* sheet.

This book contains instructions on loading paper, printing with Windows® and Macintosh®, printing borderless photos, printing on CDs and DVDs, maintaining your printer, and solving basic problems.

For more information about your printer, double-click the **SPR220 Reference Guide** icon on your desktop.

Please follow these guidelines throughout:

Warning:

Warnings must be followed carefully to avoid bodily injury.

Caution:

Cautions must be observed to avoid damage to your equipment.

Note:

Notes contain important information about your printer.

Tip:

Tips contain hints for better printing.

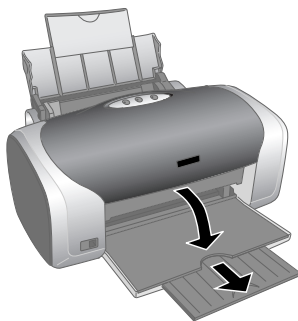
Printing From Start to Finish

Loading Paper

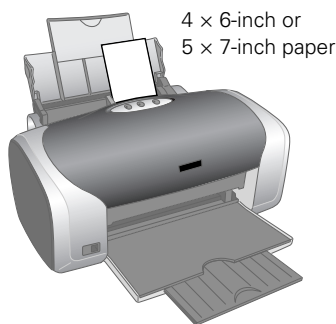
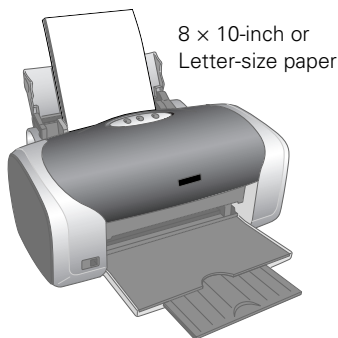
The type of paper you choose affects the way your printout looks, so be sure to select the correct paper for your job. If you are just printing a rough draft, plain paper is fine. For the best results, you'll want to use one of Epson's special ink jet papers designed for your printer. For example, your photos will look great printed on Epson Ultra Premium Glossy Photo Paper. See "Selecting the Correct Paper Type" on page 17 for more information.

Follow these steps to load paper in your printer.

1. Open the output tray and its extension.



2. Insert paper, printable side up, against the right edge guide behind the tab.
3. Slide the left edge guide against the paper (but not too tightly).



Follow these guidelines when loading paper:

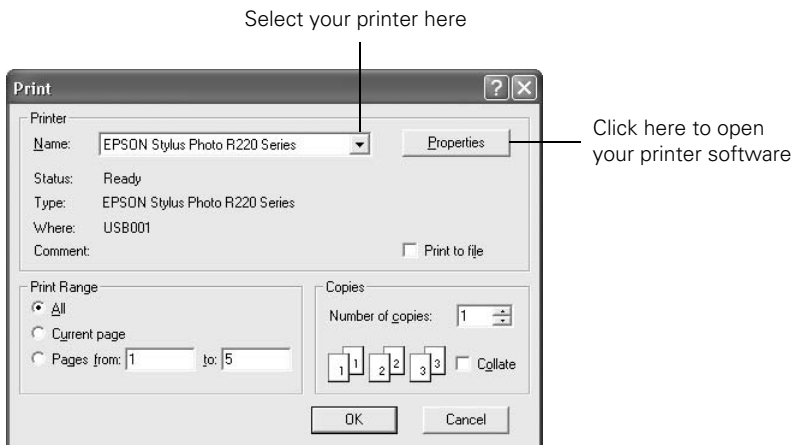
- Load the printable side face-up. It's often brighter or whiter than the other side.
- Load letterhead or preprinted paper into the printer top edge first.
- Always load the short edge first, even when printing in landscape mode.
- Don't load paper above the arrow on the left edge guide.
- If you're using special paper, follow the instructions that came with it.
- If the paper has a cut corner, position it in the upper right corner as you load it in the sheet feeder.
- To load Epson ink jet papers, follow these guidelines:

Paper Type	Loading Capacity
Premium Bright White Paper Photo Quality Ink Jet Paper	100 sheets
Photo Quality Ink Jet Cards	30 cards
Matte Paper Heavyweight Glossy Photo Paper ColorLife® Photo Paper Ultra Premium Glossy Photo Paper Premium Glossy Photo Paper Premium Semigloss Photo Paper Premium Luster Photo Paper Semigloss Scrapbook Photo Paper PremierArt™ Matte Scrapbook Photo Paper	20 sheets
Double-Sided Matte Paper Iron-On Transfer Paper Glossy Photo Greeting Cards Photo Stickers Photo Quality Self Adhesive Sheets Ink Jet Transparencies	1 sheet

Printing in Windows

Follow the instructions in this section to print a document or photo using basic print settings. For instructions on printing borderless photos, see page 18. For instructions on printing with Advanced print settings, see your on-screen *Reference Guide*.

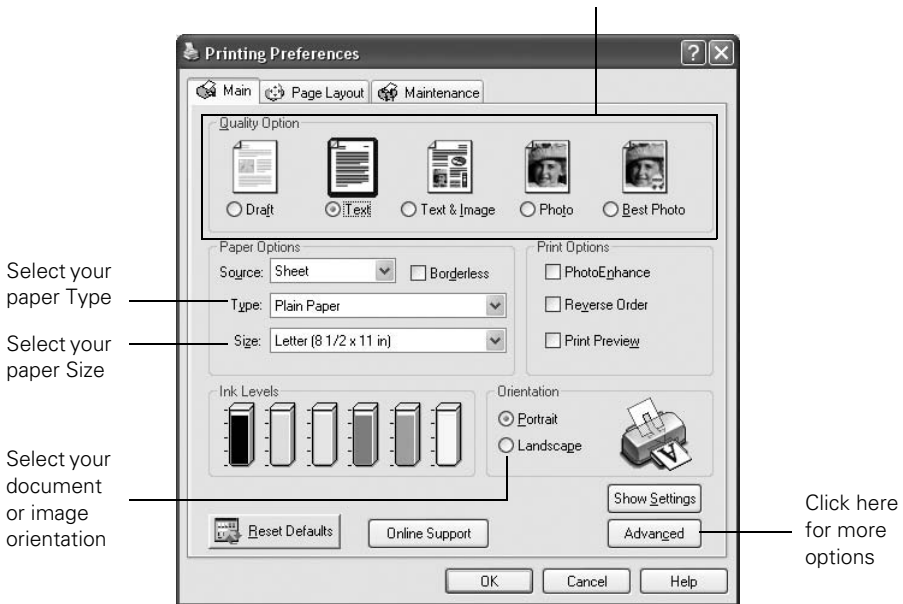
1. From the File menu, click **Print**.



2. Make sure **EPSON Stylus Photo R220 Series** is selected.
3. Click the **Properties** or **Preferences** button. (If you see a **Setup**, **Printer**, or **Options** button, click it. Then click **Properties** or **Preferences** on the next screen.)

You see the basic print settings window:

Select the type of document you're printing



4. Select from these **Quality Option** settings:

Draft: For rough drafts with reduced print quality

Text: For text-only documents with higher text quality

Text & Image: For documents with text and images with higher quality

Photo: For photos and graphics with good quality and speed

Best Photo: For photos or graphics with high print quality

5. Make sure the paper **Type** and **Size** settings match the paper you've loaded in the printer. See "Selecting the Correct Paper Type" on page 17.

6. Select **Portrait** or **Landscape** for the Orientation setting.

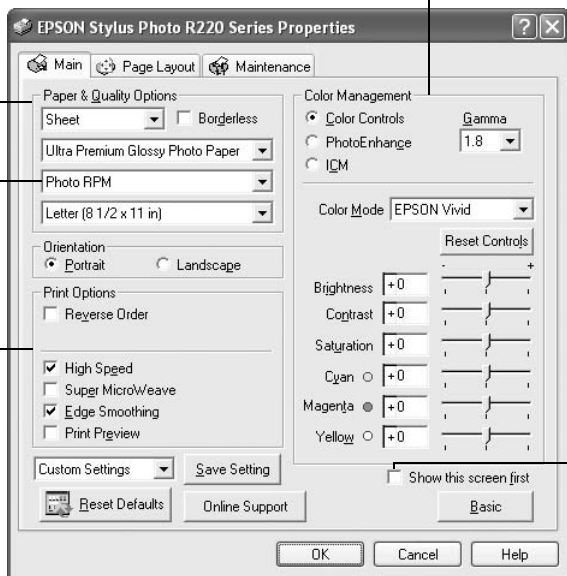
- For more printing options, click the **Advanced** button. Then select the following settings as necessary.

Select a color management method
(To choose **No Color Adjustment**, click **ICM** first)

Select Paper & Quality Options as necessary

Click here to select **Photo RPM®** for the best print quality on certain paper types

Select Print Options as necessary



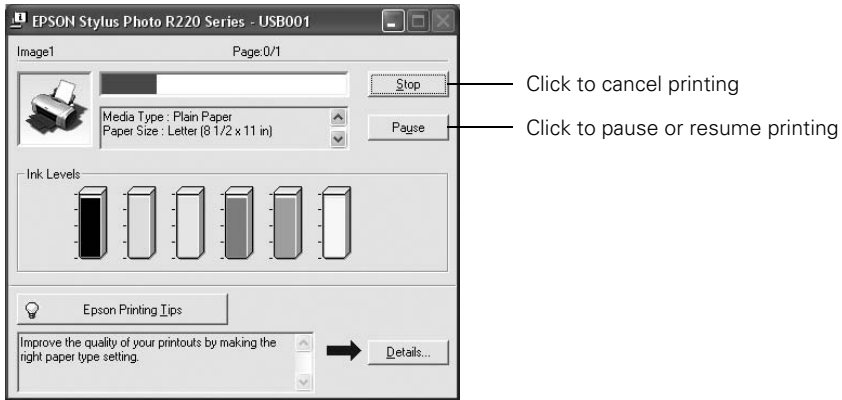
Click here if you want to see this Advanced screen each time you access your print settings

Note:

For more information about advanced settings, or instructions on saving them as a group so you can reuse them later, click **?** or **Help**.

- If you want to change the layout settings, click the **Page Layout** tab and select settings as necessary.
- Click **OK** to save your settings, then click **OK** or **Print** to start printing.

During printing, this window appears and shows the progress of your print job. You can use these buttons to cancel, pause, or resume printing. You can also see how much ink you have left.




Tip:

You can also cancel printing by pressing the  paper button on your printer.

Selecting Default Settings

Your printer settings only apply to the program that you're currently using. If you want, you can change the Windows default printer settings for all your programs.

1. Right-click the  icon in the lower right corner of your screen (taskbar).
2. Select **Printer Settings**. You see the window shown on page 10.
3. Select the default settings you want for all your applications, then click **OK**.

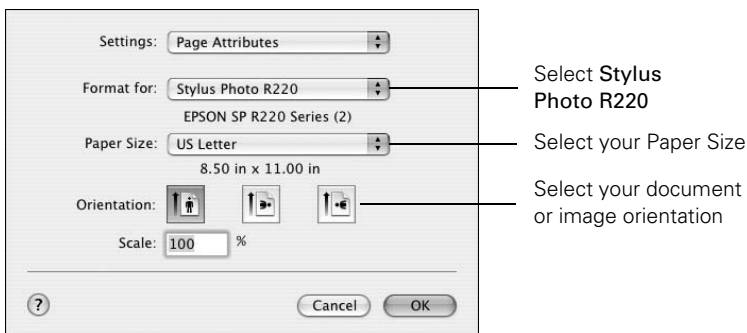
You can still change the printer settings in your program, if necessary.

Printing With a Macintosh

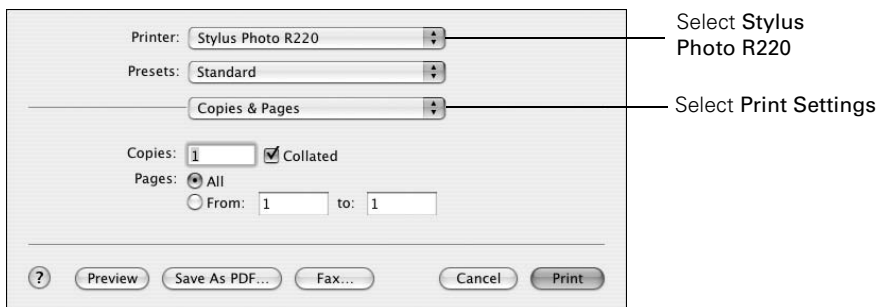
Follow the instructions in this section to print a document or photo using basic print settings. For instructions on printing borderless photos, see page 18. For instructions on printing with Advanced print settings, see your on-screen *Reference Guide*.

Before you begin, make sure you added your printer to the Printer Setup Utility or Print Center as described on the *Start Here* sheet.

1. From the File menu, select **Page Setup**. You see the Page Setup window:

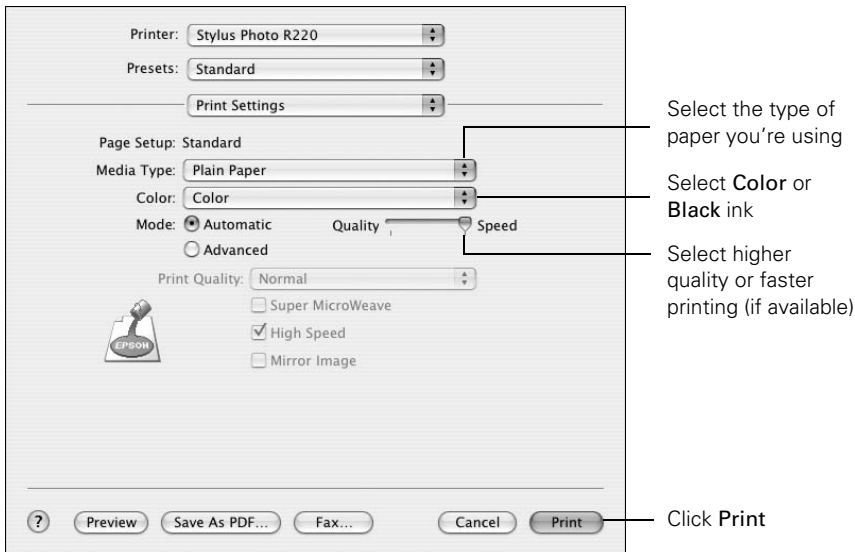


2. Select **Stylus Photo R220** from the Format for pop-up menu.
3. Select your Paper Size and Orientation.
4. Click **OK** to close the Page Setup window.
5. From the File menu, select **Print**. You see a window like this one:



6. Select **Stylus Photo R220** from the Printer pop-up menu.
7. Select **Print Settings** from the pop-up menu.

8. Select the following Print Settings as necessary:



9. You can also choose other print settings by selecting these options in the pop-up menu:

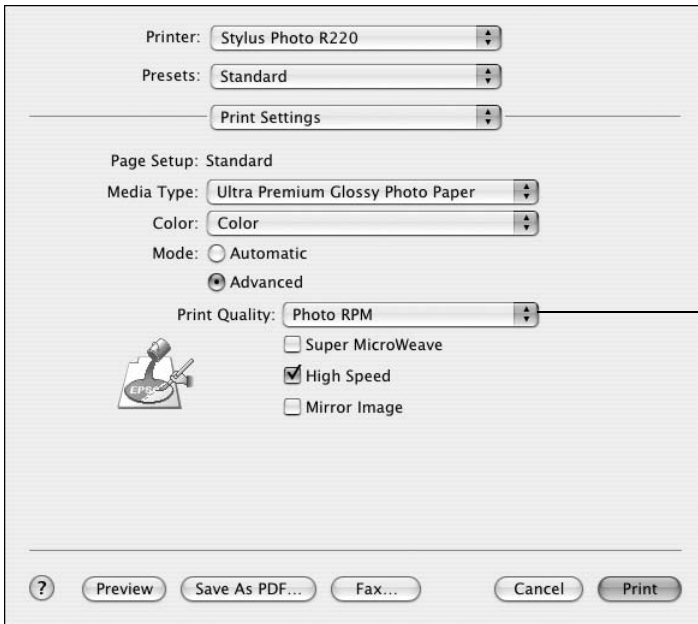
- **Copies & Pages:** To select the number of copies or a page range.
- **Layout:** To select page layout options.
- **Output Options:** To save your print job as a PDF file.
- **Scheduler:** To schedule your print job to print at a later time.
- **Paper Handling:** To select page printing options, such as **Reverse** print order.
- **Cover Page:** To print a cover page before your document or photo.
- **ColorSync or Color Management:** To select ColorSync® or adjust the color controls or gamma setting, or turn off color adjustments made by the printer driver.
- **Expansion:** To adjust the borderless image size; see page 20 for details.
- **Summary:** To view a list of all your selections.

- **Extension Setting:** To select a wider platen gap if ink smears on sheets or envelopes.
- **Save Custom Settings:** To save your selections for future use. (In OS X 10.2.4, select **Save As** from the Presets pop-up menu.)

Note:


For more information about printer settings, click the ? button.


10. Click the **Advanced** button to change these settings:



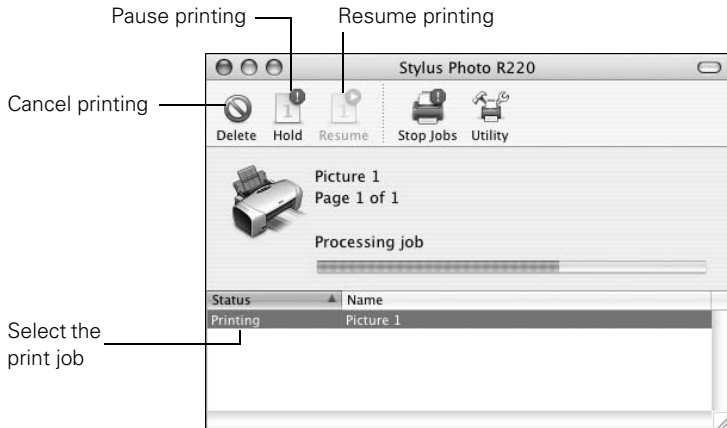
Select **Photo RPM** for the best print quality on certain paper types

11. Click **Print** to start printing.


12. To monitor the progress of your print job, click the  printer icon when it appears in the dock on the bottom of your desktop.

If you're using Mac OS X 10.2.4, click the  Print Center icon instead, then double-click **Stylus Photo R220** in the Printer List window.

You see a screen like this:



Tip:

You can also cancel printing by pressing the  paper button on your printer.

13. When you're finished, close the printer window or Print Center.

Selecting the Correct Paper Type

Select the correct paper **Type** or **Media Type** setting so your printer knows what kind of paper you're using and adjusts the ink coverage accordingly.

For this paper	Select this paper Type or Media Type setting
Plain paper Epson Iron-On Transfer Paper Epson Ink Jet Transparencies	Plain Paper
Epson Premium Bright White Paper	Bright White Paper
Epson Photo Quality Ink Jet Paper Epson Photo Quality Ink Jet Cards Epson Photo Quality Self Adhesive Sheets	Photo Quality Ink Jet Paper
Epson Matte Paper Heavyweight Epson Double-Sided Matte Paper PremierArt Matte Scrapbook Photo Paper for Epson	Matte Paper - Heavyweight
Epson Glossy Photo Paper Epson ColorLife Photo Paper Epson Glossy Photo Greeting Cards	Glossy Photo Paper
Epson Ultra Premium Glossy Photo Paper	Ultra Premium Glossy Photo Paper
Epson Premium Glossy Photo Paper	Premium Glossy Photo Paper
Epson Premium Luster Photo Paper	Premium Luster Photo Paper
Epson Premium Semigloss Photo Paper Epson Semigloss Scrapbook Photo Paper	Premium Semigloss Photo Paper
Epson Photo Stickers®	Photo Stickers
CDs or DVDs	CD/DVD
Premium Surface CDs or DVDs	CD/DVD Premium Surface
Envelopes	Envelope

Printing Borderless Photos

You can print your photos with no margins, extending the image all the way to the edges of the page.

Although borderless printing is a bit slower, you get beautiful snapshots and enlargements, without trimming, on these papers and sizes:

Paper name	Sizes	Paper Type or Media Type setting
Epson Matte Paper Heavyweight	8 × 10 inches Letter (8.5 × 11 inches)	Matte Paper - Heavyweight
PremierArt Matte Scrapbook Photo Paper	Letter (8.5 × 11 inches)	Matte Paper - Heavyweight
Epson Glossy Photo Paper	4 × 6 inches Letter (8.5 × 11 inches)	Glossy Photo Paper
Epson ColorLife Photo Paper	Letter (8.5 × 11 inches)	Glossy Photo Paper
Epson Ultra Premium Glossy Photo Paper	4 × 6 inches Letter (8.5 × 11 inches)	Ultra Premium Glossy Photo Paper
Epson Premium Glossy Photo Paper	4 × 6 inches 5 × 7 inches 8 × 10 inches Letter (8.5 × 11 inches)	Premium Glossy Photo Paper
Epson Premium Luster Photo Paper	Letter (8.5 × 11 inches)	Premium Luster Photo Paper
Epson Premium Semigloss Photo Paper	Letter (8.5 × 11 inches)	Premium Semigloss Photo Paper
Epson Semigloss Scrapbook Photo Paper	Letter (8.5 × 11 inches)	Premium Semigloss Photo Paper

Return any unused paper to its original package. Store your printouts in resealable plastic bags, photo albums, or glass-covered picture frames. Keep both printed and unused paper away from high temperatures, humidity, and sunlight.

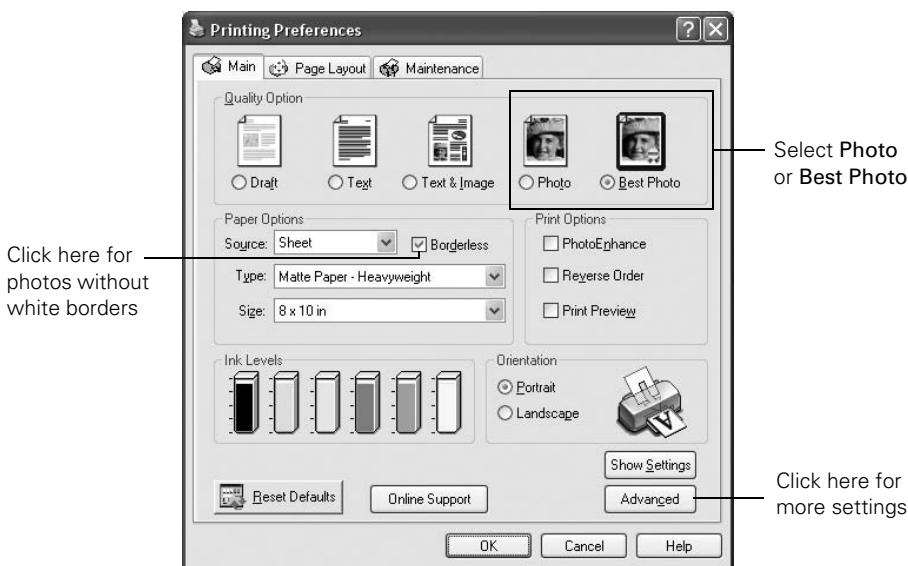
See these sections for instructions on selecting printer settings:

- “Windows” below
- “Macintosh” on page 20

Windows

1. Start your photo program and open your photo.
2. From the File menu, select **Print**.
3. Make sure **EPSON Stylus Photo R220 Series** is selected, then click **Properties** or **Preferences**.

You see the following window:



4. Select **Photo** or **Best Photo** as the Quality Option setting.
5. Select one of the following as the paper Type setting:
 - **Matte Paper - Heavyweight**
 - **Photo Paper**
 - **Glossy Photo Paper**
 - **Ultra Premium Glossy Photo Paper**
 - **Premium Glossy Photo Paper**

- Premium Luster Photo Paper
- Premium Semigloss Photo Paper

6. Click the **Borderless** checkbox. Read the message and click **OK**.

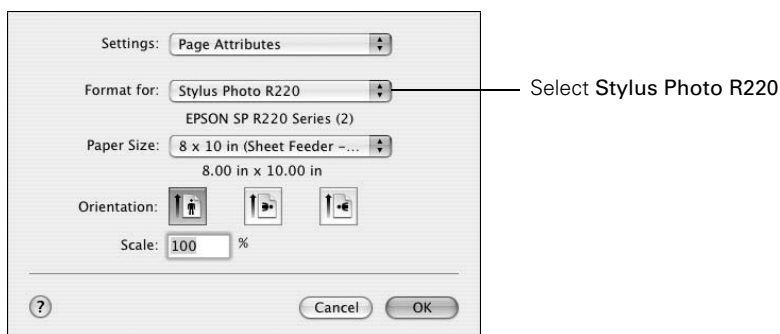
Note:

If you need to adjust the amount of image expansion necessary for borderless printing, click the **Page Layout** tab and move the **Expansion** slider.

7. Select your paper Size setting.
8. Select your photo orientation.
9. Click **OK** to save your settings, then click **OK** or **Print** to start printing.

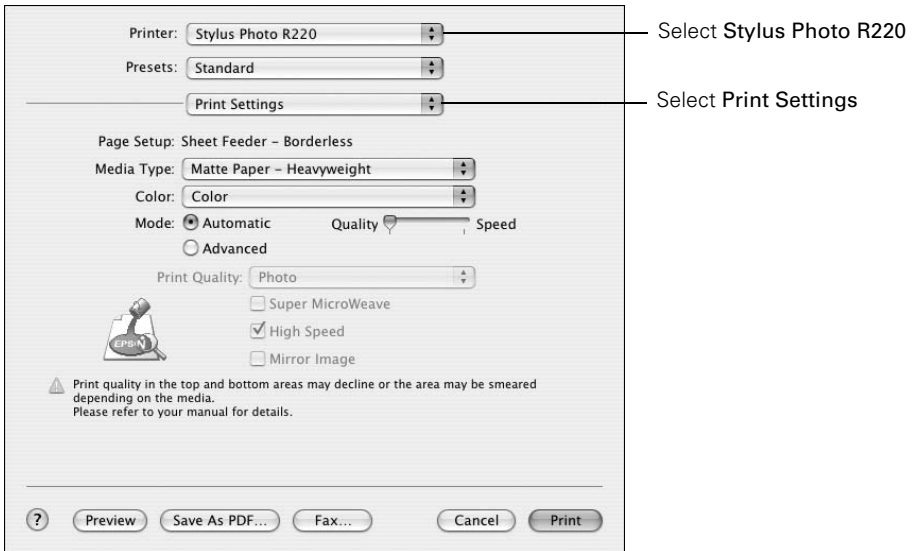
Macintosh

1. Start your photo program and open your photo.
2. From the File menu, select **Page Setup**. You see the Page Setup window:



3. Select **Stylus Photo R220** from the Format for pop-up menu.
4. Select a borderless Paper Size.
5. Select your photo orientation.
6. Click **OK** to close the Page Setup window.

7. From the File menu, select **Print**.



8. Select **Stylus Photo R220** in the Printer pop-up menu.

9. Select **Print Settings** from the pop-up menu.

10. Select one of the following as the Media Type setting:

- **Matte Paper - Heavyweight**
- **Photo Paper**
- **Glossy Photo Paper**
- **Ultra Premium Glossy Photo Paper**
- **Premium Glossy Photo Paper**
- **Premium Luster Photo Paper**
- **Premium Semigloss Photo Paper**

11. Select **Quality** using the slider.

Note:

If you need to adjust the amount of image expansion necessary for borderless printing, select **Expansion** from the pop-up menu and move the **Expansion** slider.

12. Click **Print** to start printing.

Printing on CDs and DVDs

Your printer includes a special tray that lets you print customized text, graphics, and photos directly on any ink jet-printable CD or DVD. The EPSON Print CD software makes it easy to import your own photos, add text, and modify your designs with a variety of special effects. You can print on both regular 12-cm and 8-cm mini CDs and DVDs.

Caution:



Use only ink jet-printable CDs and DVDs for printing. Thermal-printable and regular CDs and DVDs should not be used with this printer.

Follow the steps in these sections to print on CDs or DVDs:

- “Cleaning the Rollers” below
- “Inserting a CD or DVD” on page 23
- “Designing CDs and DVDs”
- “Printing Your Design” on page 27
- “Adjusting the Print Position” on page 28
- “Adjusting the Print Density” on page 29

Cleaning the Rollers

Before you print on CDs or DVDs, it’s a good idea to clean the rollers inside your printer. You can do this by feeding and ejecting several sheets of plain paper.

1. Make sure your printer is turned on and several sheets of letter-size paper are loaded.
2. Press the  paper button to feed a sheet of paper into the printer.
3. Press the  paper button again to eject the paper.
4. Repeat steps 2 and 3 several times.

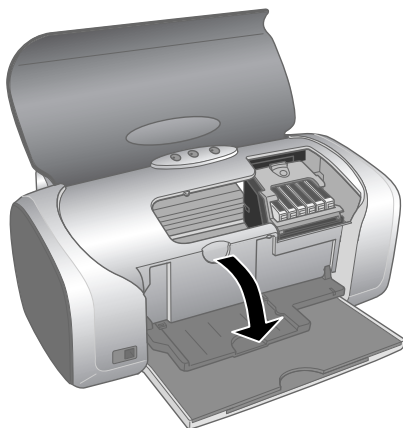
Inserting a CD or DVD

Make sure the data, music, or video is burned on your ink jet-printable CDs or DVDs before you print. Otherwise, dirt or scratches on the surface may cause errors when you burn the data. If you plan to print a large number of CDs or DVDs, it's a good idea to print a small sample, then wait a day and check the quality to make sure it's satisfactory.

If you want to check the print position, or color, see the instructions for “Adjusting the Print Position” on page 28 and “Adjusting the Print Density” on page 29.

Before you insert a CD or DVD, make sure the printer is turned on. Otherwise, the disc may not be positioned correctly. Then follow these steps:

1. Push in the output tray extension, but leave the tray open.
2. Open the printer cover and pull down the CD/DVD tray guide.

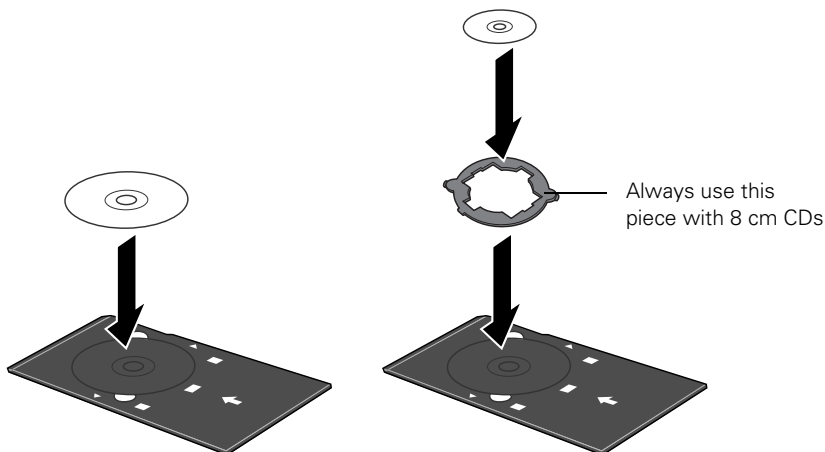


3. Place the CD or DVD on the CD/DVD tray with the white or printable side face-up. Make sure the disc lays flat in the tray.

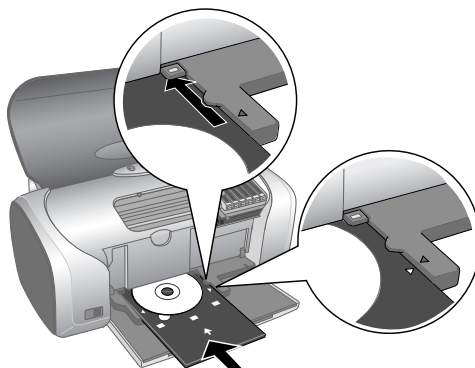
To print on a small CD (8-cm), place the small CD ring on the tray first, then place the CD inside the ring.

Caution:

Make sure you always use the small CD ring when printing on 8-cm CDs and that the CD and ring lay flat on the tray, otherwise the printer may be damaged.





4. Insert the tray carefully, making sure it's level, not tilted up or down. Push the tray under the tab and the two rollers. Don't push the tray in too far and make sure that the arrows line up exactly.

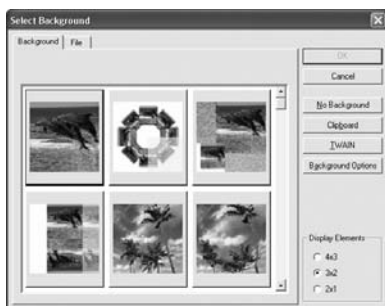


5. Follow the instructions in "Printing Your Design" on page 27 to print with EPSON Print CD.

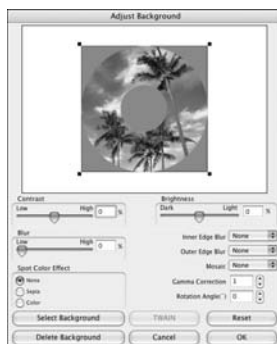
Designing CDs and DVDs

You can use EPSON Print CD to create and print a disc design with images, graphics, and text.

1. Start EPSON Print CD by doing one of the following:
 - **Windows:** Click **Start > Programs or All Programs > EPSON Print CD > EPSON Print CD**.
 - **Macintosh:** Open the **Applications > EPSON Print CD** folder and select **EPSON Print CD**.
2. To add a background image, click the  or  background icon. You see the following window:



Windows





Macintosh

3. To select a background image do one of the following:
 - **Windows:** Click the **File** tab, then click **Browse** to locate the folder your images are stored in and click **OK**. You see thumbnail images of all the files in the folder. Select your image and click **OK**.
 - **Macintosh:** Click **Select Background**, locate the folder your images are stored in, select the one you want, then click **Open**.

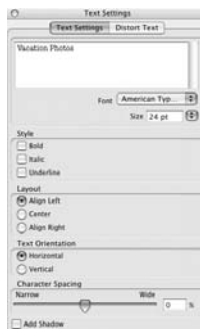
Note:

In Windows, if you have already chosen a background, you see a different screen. Click **Select Image** to choose a new background.

4. To add text, do one of the following:
 - **Windows:** Click the  button. Enter your text and use the tabs to apply formatting and special effects, and click OK. (To open the window again, double-click any block of text.)
 - **Macintosh:** Click the  button. In the Text Settings window, type your text, then use any of the options in the window to format it. You can also use options in the Color Settings and Object Settings windows.



Windows



Macintosh

5. To curve a single line of text, click the text in the main window, then drag the red “handle” up or down. Then adjust it using the other handles that appear.
6. When you’re finished, choose **Save as** from the File menu to save your file.

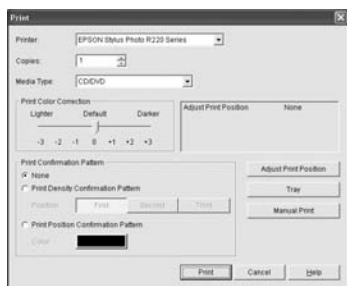
Note:

To check your design, it’s a good idea to print it on a sheet of plain paper before printing on a CD or DVD. Make sure you have plain paper loaded in the printer, then follow the instructions in “Printing Your Design” on page 27.

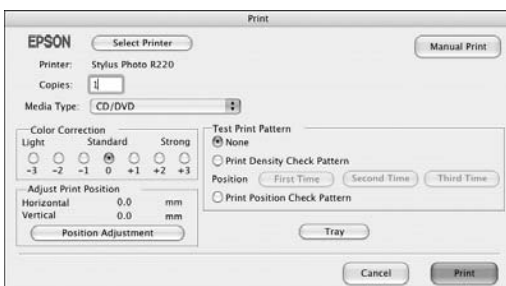
Printing Your Design

After you have created your design and loaded a CD or DVD, you're ready to print.

1. Open the File menu and select Print.
2. Make sure EPSON Stylus Photo R220 Series (Windows) or Stylus Photo R220 (Macintosh) is selected, then click Print.



Windows



Macintosh

Note:

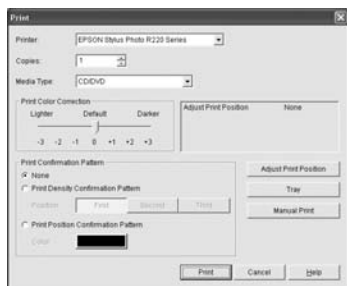
After you print, handle the CD or DVD carefully. To allow the ink to dry, wait at least 24 hours before playing the disc or inserting it in a drive. Keep printed discs away from moisture and direct sunlight.

If you need to adjust the print position or color, see “Adjusting the Print Position” on page 28 or “Adjusting the Print Density” on page 29.

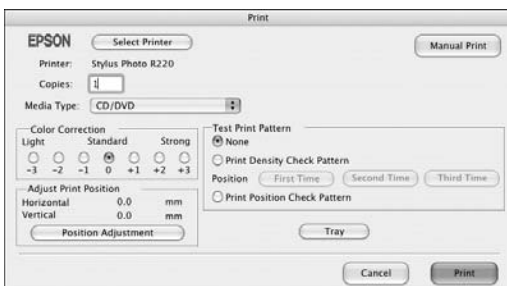
Adjusting the Print Position

If your printed images and text are not centered or positioned the way you want, you may need to adjust the printing position. Use the blank cardboard check disk included with your printer, or an extra CD. You can also use these steps to check the position before you print on a CD or DVD.

1. Place the cardboard check disk (or an extra CD) on the CD tray and insert it into the printer, as described on page 23.
2. Start EPSON Print CD.
3. Select **Print** from the File menu.

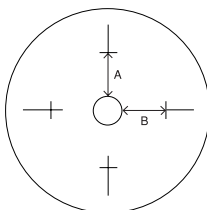


Windows



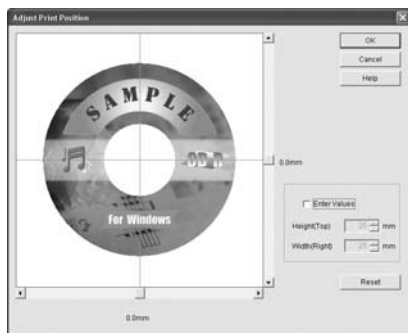
Macintosh

4. Make sure EPSON Stylus Photo R220 Series (Windows) or Stylus Photo R220 (Macintosh) is selected, then click **Print Position Confirmation Pattern** (Windows) or **Print Position Check Pattern** (Macintosh).
5. Click **Print**. The confirmation pattern is printed on the check disk or CD.

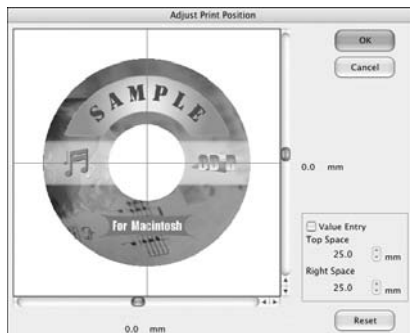


6. Remove the check disk or CD and measure the distance from the edge of the hole to the small cross marks labeled **A** and **B**. You'll need a metric ruler with millimeters for accurate measurements.

- Open the File menu and select **Adjust Print Position (Windows)** or **Position Adjustment (Macintosh)**. You see a screen like this:



Windows



Macintosh

- Make sure **Enter Values (Windows)** or **Value Entry (Macintosh)** is checked. Input the A distance in the **Height (Top)** or **Top Space** box. Enter the B distance in the **Width (Right)** or **Right Space** box.
- Click **OK** to save the measurements.

Adjusting the Print Density

If ink smears on your printed CDs or DVDs, you may need to adjust the color saturation or ink density. CDs from different manufacturers may absorb ink differently, so you may need to adjust the density for each type of disc. Follow these instructions to print a color saturation check pattern, and then make adjustments as necessary.

- Insert a test CD or DVD for printing, as described on page 23.
- Start EPSON Print CD.
- Select **Print** from the File menu.
- Make sure **EPSON Stylus Photo R220 Series (Windows)** or **Stylus Photo R220 (Macintosh)** is selected, then click **Print Density Confirmation Pattern (Windows)** or **Print Density Check Pattern (Macintosh)**.
- Click **Print**.

6. After the pattern is printed, examine the print and make the **Print Color Correction** (Windows) or **Color Correction** (Macintosh) setting lighter or darker as necessary.

You can print three density patterns on one disc. Each pattern is printed in a different location.

7. After the first pattern is printed, adjust the setting, then repeat steps 4 through 6, selecting **Second** or **Second Time** to print the second pattern.
8. If you want to try a third Color Correction setting, you can repeat steps 4 through 6 again and select **Third** or **Third Time**.
9. Remove the CD or DVD and let it dry for at least 24 hours. Then check the saturation levels again.

You can also use the Brightness and Contrast settings in EPSON Print CD to adjust color saturation. See the EPSON Print CD on-screen help for instructions.

Maintaining Your Printer

Cleaning the Print Head

If your printouts are unexpectedly light or dots or lines are missing, you may need to clean the print head. This unclogs the nozzles so they can deliver ink properly. Print head cleaning uses ink, so clean it only if quality declines.


This section explains how to clean the print head using the Head Cleaning Utility.

You can also clean the print head by holding down the \triangle ink button on the printer for three seconds. (This only works when the red \triangle ink light is off.)

Caution:

When you don't turn on your printer for a long time, print quality can decline, so turn it on and print a few pages at least once a month to maintain good print quality.

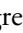
Running the Head Cleaning Utility

1. Make sure the printer is turned on but not printing, and the red \triangle ink light is off. (If the \triangle ink light is flashing or on, you need to replace a cartridge; see page 33 for details.)
2. Do one of the following:
 - **Windows:** Right-click the  icon on your taskbar (in the lower right corner of your screen). Select **Head Cleaning**.
 - **Macintosh:** Open the **Applications** folder and select **EPSON Printer Utility**. Select **SP R220 Series** in the printer list, click **OK**, then select **Head Cleaning**.
3. Follow the instructions on the screen to clean the print head.

Cleaning takes about 45 seconds. The printer makes noise and the green ϕ power light flashes.

Caution:

Never turn off the printer while the green ϕ power light is flashing, unless the printer hasn't moved or made noise for more than 5 minutes.

4. When the green  power light stops flashing, make sure paper is loaded in the printer, then do one of the following:

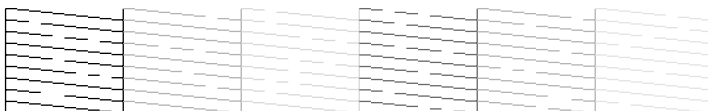
- **Windows:** Click **Print nozzle check pattern**, then click **Print**.
- **Macintosh:** Click **Confirmation**, then click **Next**.

The nozzle check pattern prints.

5. If the nozzle check pattern has no white lines or gaps (as shown below), click **Finish**.



If the pattern has white lines or gaps (as shown below), click **Clean** to clean the print head again.



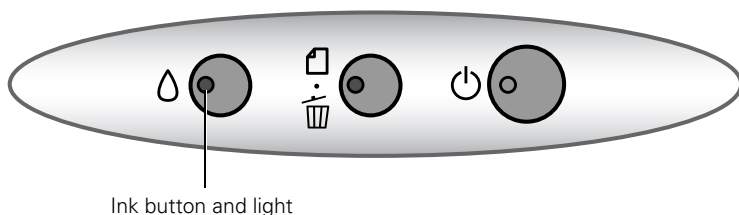
If you don't see any improvement after cleaning three or four times, refer to "Problems and Solutions" on page 46.

You can also turn the printer off and wait overnight—this allows any dried ink to soften—and then try cleaning the print head again.

Replacing an Ink Cartridge

When the red ◊ ink light flashes, one or more ink cartridges are low on ink.

When the red ◊ ink light stays on, you need to replace the cartridge(s).



When you print, you'll also see a message on your screen telling you which cartridge is low or empty.

When a cartridge is more than six months old, you may need to replace it if printouts don't look their best. If the quality doesn't improve after cleaning and aligning the print head, you can replace the cartridge even if the red ◊ ink light is off.

Checking the Ink Supply

To check the ink supply, do one of the following:

- **Windows:** Double-click the  icon on the Windows taskbar.

You see a window like this one:



- **Macintosh:** Open the **Applications** folder and select **EPSON Printer Utility**. Select **SP R220 Series** in the printer list, click **OK**, then select **EPSON StatusMonitor**.

You see a window like this one:



Click a cartridge image to display information about the cartridge.

Purchasing Ink Cartridges

Use these Epson ink cartridges within six months of installing them and before the expiration date on the package:

Ink cartridge	Part Number
Black	T048120
Cyan	T048220
Magenta	T048320
Yellow	T048420
Light Cyan	T048520
Light Magenta	T048620
Color Multipack	T048920

Caution:

To ensure good results, use genuine Epson ink cartridges and do not refill them. Other products may cause damage to your printer not covered by Epson's warranty.

You can purchase genuine Epson ink and paper from an authorized Epson reseller. To find the nearest reseller, please call 800-GO-EPSON (800-463-7766). To purchase online, visit www.epsonstore.com (U.S. sales only). In Canada, please call 800-463-7766 for reseller referral.

Ink Cartridge Precautions

Warning:

Keep ink cartridges out of the reach of children and don't drink the ink.

If ink gets on your hands, wash them thoroughly with soap and water. If ink gets in your eyes, flush them thoroughly with water.



Caution:

To avoid damaging the printer, never move the print head by hand.

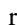

You cannot print if an ink cartridge is empty. Leave the empty cartridge installed in the printer until you have obtained a replacement. Otherwise the ink remaining in the print head nozzles may dry out.

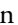

Removing and Installing Ink Cartridges

Be sure you have a new ink cartridge before you begin. Once you start replacing a cartridge, you must complete all the steps in one session.

1. Make sure the printer is turned on (the green  power light should be on, but not flashing). Then open the printer cover.
2. Press and release the  ink button.

If your ink light is off, go to step 4.

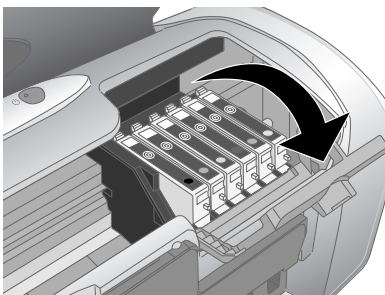
If your ink light is on or flashing, the print head moves to the left, and the cartridge that needs to be replaced stops under the  ink out mark. The  power light begins to flash. Go to step 3.

3. Press the  ink button again.
 - If more than one cartridge is empty, the next cartridge moves under the  ink out mark.
 - If all the empty cartridges have been identified, the print head moves to the ink cartridge replacement position.

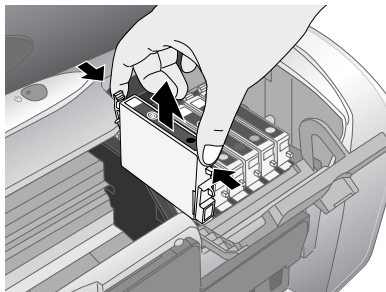
Note:

You can also use the Status Monitor to find out which cartridge is out of ink. See “Checking the Ink Supply” on page 33 for more information.

4. Lift up the cartridge cover.



5. Press in the tab on the back of the cartridge and lift the cartridge out of the printer. Dispose of it carefully.



Warning:

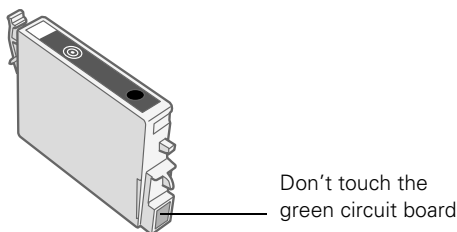
Keep ink cartridges out of the reach of children and don't drink the ink.

If ink gets on your hands, wash them thoroughly with soap and water. If ink gets in your eyes, flush them thoroughly with water.

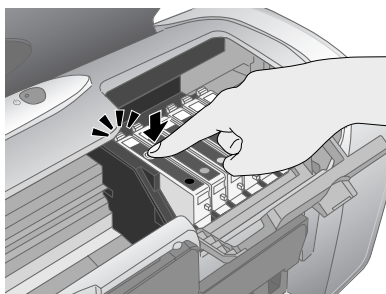
6. Unwrap the new ink cartridge.

Caution:

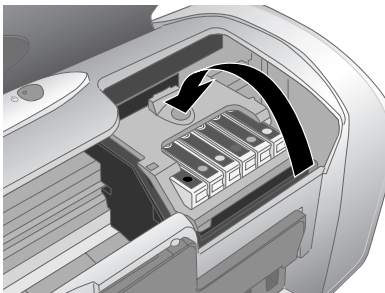
Don't touch the green circuit board or remove any labels.



7. Lower the cartridge into the holder, with the green circuit board facing the front. Then gently push the cartridge down until it clicks into place.



8. If you need to replace another ink cartridge, repeat steps 5 through 7 before continuing with step 9.
9. Close the cartridge cover.



10. Close the printer cover and press the Δ ink button. The printer begins charging the ink delivery system.


The green P power light flashes and the printer makes noise. Charging takes about half a minute. When it's finished, the green P power light stops flashing and stays on, and the red Δ ink light goes out.

Caution:

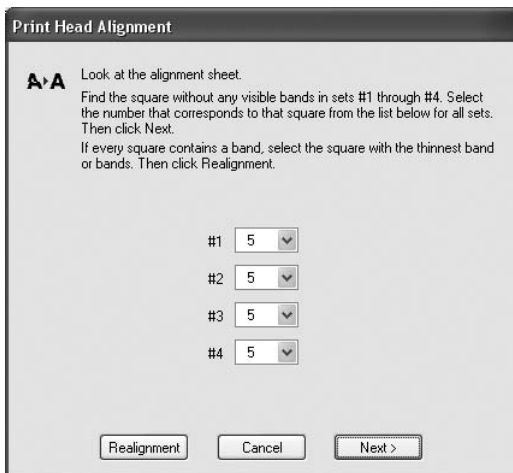
Never turn off the printer while the green P power light is flashing, unless the printer hasn't moved or made noise for more than 5 minutes.

Aligning the Print Head

If your printouts contain misaligned vertical lines, or you see light or dark horizontal banding, you may need to align the print head.

1. Turn on the printer.
2. Load several sheets of plain, letter-size paper.
3. Do one of the following:
 - **Windows:** Right-click the  icon on your taskbar (in the lower right corner of your screen). Select **Print Head Alignment**.
 - **Macintosh:** Open the **Applications** folder and select **EPSON Printer Utility**. Select **SP R220 Series** in the printer list, click **OK**, then select **Print Head Alignment**.
4. Follow the instructions on the screen to print the alignment pattern.

You see a window like this one:



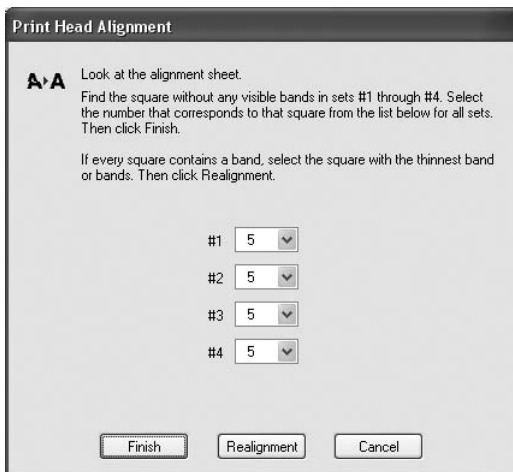
5. On the test page, select the square without any visible bands. You may need to use a magnifying glass or loupe.

6. Select one square each for rows 1 to 4, then enter the number of the best square in the corresponding boxes on the screen. Then click **Next**.

If you can't find a square without visible bands, choose the one that's best. Then click **Realignment** to print another test page and repeat this step.

7. After you click **Next**, follow the instructions on the screen to print the next test page.

You see a window like this one:



The image shows a 'Print Head Alignment' dialog box. It has a title bar with the text 'Print Head Alignment'. Inside the dialog, there is a section with a printer icon and the text: 'Look at the alignment sheet. Find the square without any visible bands in sets #1 through #4. Select the number that corresponds to that square from the list below for all sets. Then click Finish.' Below this, there is another line of text: 'If every square contains a band, select the square with the thinnest band or bands. Then click Realignment.' In the center, there are four rows, each with a label (#1, #2, #3, #4) and a dropdown menu. All four dropdown menus are currently set to the number '5'. At the bottom of the dialog, there are three buttons: 'Finish', 'Realignment', and 'Cancel'.

Print Head Alignment

A A Look at the alignment sheet.
Find the square without any visible bands in sets #1 through #4. Select the number that corresponds to that square from the list below for all sets. Then click Finish.

If every square contains a band, select the square with the thinnest band or bands. Then click Realignment.

#1 5 ▼
#2 5 ▼
#3 5 ▼
#4 5 ▼

Finish Realignment Cancel

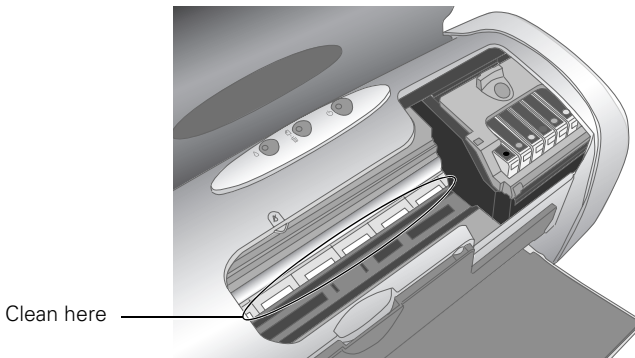
8. On the test page, select the square without any visible bands. You may need to use a magnifying glass or loupe.
9. Select one square each for rows 1 to 4, then enter the number of the best square in the corresponding boxes on the screen. Then click **Finish**.

If you can't find a square without visible bands, choose the one that's best. Then click **Realignment** to print another test page and repeat this step.

Cleaning the Printer

To keep your printer working at its best, you should clean it several times a year.

1. Turn off the printer, unplug the power cord, and disconnect the USB cable.
2. Remove all the paper, then use a soft brush to clean the sheet feeder.
3. If the outer case or inside of the sheet feeder are dirty, clean it with a soft cloth dampened with mild detergent. Keep the printer cover closed to prevent water from getting inside.
4. If ink accidentally gets inside of the printer, wipe it off with a damp cloth in the area shown.



Warning:

Don't touch the gears or any other parts inside the printer.

Caution:

Never use a hard or abrasive brush, or benzine, alcohol, or paint thinner for cleaning; they can damage the printer components and case.

Don't get water on the printer components and don't spray lubricants or oils inside the printer.

Don't use any cleaning sheets included with special paper; they may jam inside the printer.

Transporting the Printer

If you need to move your printer some distance, you must prepare it for transportation in its original box or one of a similar size.

Caution:

To avoid damage, always leave the ink cartridges installed when transporting the printer.

1. Open the printer cover and turn on the printer. Wait until the print head locks in the far right position, then turn off the printer.
2. Unplug the power cord from the electrical outlet. Then disconnect the power cord and USB cable from the printer.
3. Remove any paper from the printer, then push down the paper support extension, and close the paper support.
4. Make sure the CD/DVD tray guide is closed, then push in the output tray extension and close the tray.
5. Open the printer cover. Secure the ink cartridge holder to the printer with tape, then close the printer cover.
6. Repack the printer and its attachments in the original box using the protective materials that came with them.

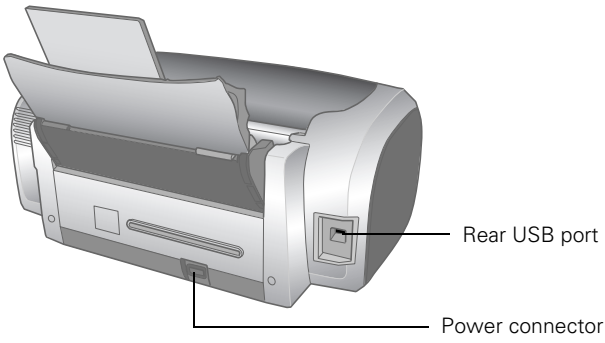
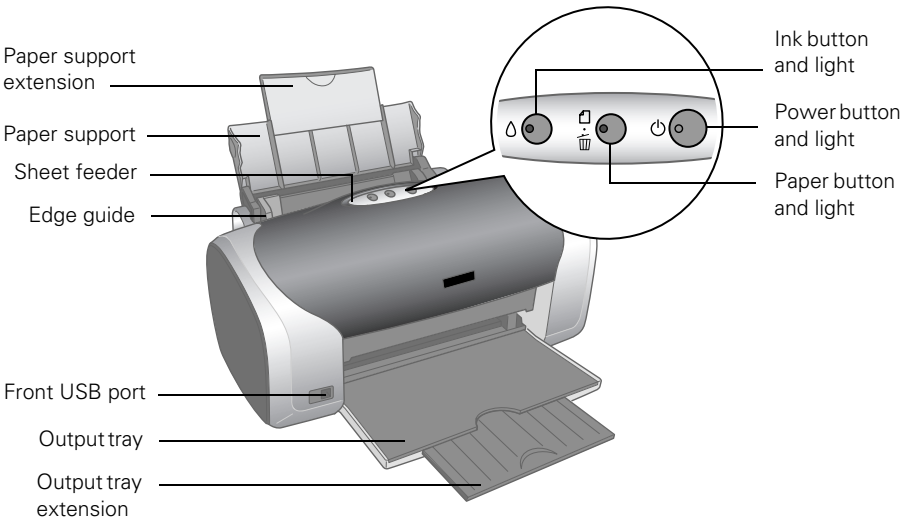
Keep the printer level as you transport it.

After transporting the printer, remove the tape securing the print head and test your printer. If you notice a decline in print quality, clean the print head (see page 31); if output is misaligned, align the print head (see page 39).

Solving Problems




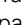
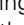


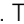
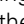


See “Diagnosing Printer Problems” on page 44 to help determine what the cause of your printer problem may be. If you cannot solve the problem, see “Where To Get Help” on page 54.




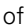

Printer Parts



Diagnosing Printer Problems

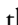


First, check the printer's lights (see below) or run a printer check (see page 63).

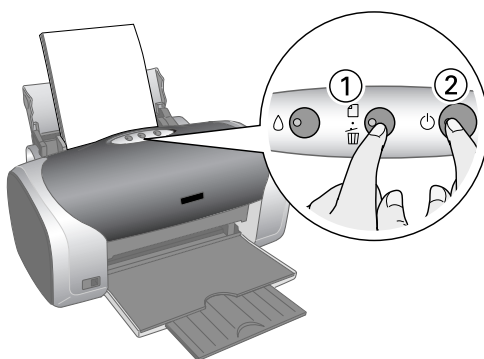
Lights	Explanation
Green  power light flashes	The printer is receiving a print job, replacing an ink cartridge, charging ink, or cleaning the print head.
Red  paper light is on	<p>If the CD/DVD tray guide is open, close the CD/DVD tray guide, load paper, then press the  paper button.</p> <p>Your paper ran out or multiple sheets loaded at the same time. Load paper and press the  paper button to resume printing.</p> <p>When printing on CDs or DVDs, the CD/DVD tray is not inserted in the printer. Insert the CD/DVD tray into the printer and press the  paper button to print (see "Inserting a CD or DVD" on page 23).</p>
Red  paper light flashes	<p>Paper is jammed in the printer. Press the  paper button to eject the jammed paper. If the light is still flashing, open the cover and remove all paper, including any jammed or torn pieces. Then reload paper and press the  paper button to continue printing.</p> <p>When printing on CDs or DVDs, the CD/DVD tray is jammed in the printer. Pull out the CD/DVD tray and press the  paper button.</p>
Red  ink light flashes	One or more cartridges are low on ink. Check the message that appears on your screen to determine which cartridge is low, or follow the instructions in "Checking the Ink Supply" on page 33. Make sure you have a replacement cartridge.
Red  ink light is on	<p>One or more cartridges are out of ink or not installed. Make sure you have a replacement cartridge, then follow the steps in "Replacing an Ink Cartridge" on page 33.</p> <p>If you have just installed a new cartridge, it may be incompatible with the printer or incorrectly installed. Reinstall it or replace it with the correct cartridge as described on page 33.</p>

Lights	Explanation
Red  ink and red  paper lights flash alternately	The CD/DVD tray guide was left open when you turned on the printer or when printing on paper. Close the CD/DVD tray guide.
Green  power light is off; red  paper and red  ink lights flashing	<p>Paper may be blocking movement of the print head. Turn off the printer, then open the cover and remove any jammed paper or other foreign objects. Turn the printer back on again. If the lights are still flashing, contact Epson as described on page 54.</p> <p>The printer may have an internal error. Turn off the printer, wait a few seconds, then turn it on again. If the lights are still flashing, contact Epson as described on page 54.</p>

Running a Printer Check

You can run a printer check to determine whether a problem comes from the printer or some other source.

1. Turn off your printer and computer.
2. Disconnect the printer's USB cable.
3. Load letter-size paper in the printer.
4. Hold down the  paper button, then press and release the  power button. When printing starts, release the  paper button.



5. A nozzle check pattern prints. (If the pattern has gaps, you need to clean the print head as described on page 31.)
 - If the test page prints, the problem probably lies in your software settings, USB cable, or computer, or your software may not be installed correctly.
 - If the test page doesn't print, you may have a problem with your printer.Try the suggestions in “Problems and Solutions” below. If nothing works, contact Epson as described in “Where To Get Help” on page 54.
6. Turn off the printer, reconnect the USB cable, then turn on your printer and computer.

Problems and Solutions

Setup and Software Installation Problems

The printer makes noise after ink cartridge installation.

- The first time you install ink cartridges, the printer must charge its print head for about two minutes. Wait until charging finishes before you turn off the printer, or it may charge improperly and use excess ink the next time you turn it on.
- Make sure the ink cartridge cover is closed completely and no packing material remains in the printer. Turn off the printer, wait a moment, then turn it back on to clear the error.

You're having problems installing the printer software.

- Carefully follow the installation instructions on the *Start Here* sheet. Do not connect your printer to the computer until you are instructed to do so. When connecting your printer, make sure the USB cable is connected securely to the printer and the computer. Also make sure your system meets the requirements shown on page 57.
- Close your other programs, including any screen savers and virus protection software, and install again.

- If you are using a Macintosh and you do not see the printer name in the Format for menu on the Page Setup screen, you may need to set up your printer in the Printer Setup Utility or Printer Center. See the *Start Here* sheet for instructions.
- For Windows 2000, if you see an error message or your software doesn't install correctly, you may not have software installation privileges. Contact your System Administrator.
- Make sure Windows 98SE, Me, 2000, or XP was preinstalled on your system. The USB Printer Device Driver may not install correctly if you've upgraded from Windows 95.
- Make sure the USB Controller is working properly in Device Manager. See your Windows help system for details. If it's not working, contact your computer manufacturer.
- If you're printing over a network, see your on-screen *Reference Guide* for instructions on configuring your printer for use on a network.

Printer Problems

The printer is on, but nothing prints.

- Make sure the USB cable is connected securely and that the cable meets the system requirements on page 57.
- Run a printer check as described on page 45. If the check page prints, make sure your software is installed correctly.
- If you're printing on a network, you need to set up your printer for network printing, as described in your on-screen *Reference Guide*.

The printer sounds as though it is printing, but nothing prints.

- Make sure the print head nozzles are not clogged. To clean the print head, see page 31.
- The printer won't operate properly if it's tilted or at an angle. Place it on a flat, stable surface that extends beyond the printer base in all directions.

Your printer makes noise when you turn it on or after it has been sitting for awhile.

Your printer is performing routine maintenance.

Printing is too slow.

Make sure your system meets the requirements listed on page 57. If you're printing a high-resolution image, you need more than the minimum requirements listed.

You may also need to:

- Clear space on your hard drive or run a defragmentation utility.
- Close open programs that you're not using.
- Increase your system's memory (RAM).

For the fastest printing, try these tips:

- Set the Quality Option to **Draft** (Windows) or the Quality/Speed slider to **Speed** (Macintosh).
- In the Advanced options, turn **MicroWeave®** off (Macintosh only) and turn **High Speed** on.
- If your printer is connected to a hub, disconnect USB devices that you're not using.

Note:

Borderless printing takes longer, especially near the edges of the paper.

Print Quality Problems

You see banding (light lines).

- The print head nozzles may need cleaning; see page 31 for instructions.
- Select a higher print quality and turn off High Speed mode. see page 10 (Windows) or page 14 (Macintosh) for instructions.
- Make sure the Type (Windows) or Media Type (Macintosh) setting matches the paper you loaded; see page 17 for guidelines.



- Make sure the printable side of the paper is face up. It's usually brighter or whiter.
- The ink cartridges may need replacing; see page 33 for instructions.
- Run the Print Head Alignment utility; see page 39 for instructions.

Your printout is blurry or smeared.

- Make sure you load paper with the printable side face up. The printable side is usually the brighter or whiter side of the paper.
- Make sure your paper isn't damp or curled, or loaded face down (the printable side should be face up). If it's damp or curled, reload a new stack of paper.
- When printing on special paper, check the instructions in the paper package. You may need to use an included support sheet or load your paper one sheet at a time.
- Use Epson papers to ensure proper saturation and absorption of genuine Epson inks.
- Make sure your paper meets the specifications listed in the on-screen *Reference Guide*.
- Run the Print Head Alignment utility; see page 39 for instructions.
- Remove each sheet from the output tray after printing, especially when you're printing on transparencies.



Your printout is faint or has gaps.

- The print head nozzles may need cleaning; see page 31 for instructions.
- The ink cartridges may be old or low on ink. To replace an ink cartridge, see page 33.
- Make sure the paper Type (Windows) Media Type (Macintosh) setting matches the paper you loaded; see page 17 for guidelines.



- Make sure your paper isn't damaged, old, dirty, or loaded face down. If it is, reload a new stack of paper with the printable side up; it is usually brighter or whiter than the other side.

Your printout is grainy.

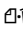
- Try using a higher quality paper.
- Select a higher print quality setting; see page 10 (Windows) or page 14 (Macintosh) for instructions.
- Run the Print Head Alignment utility. See page 39 for instructions.
- You may need to increase the image resolution or print it in a smaller size; see your software documentation.

You see wrong or missing colors.

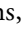
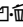
- Make sure **Black ink only** (Windows) is off or **Color ink** is selected (Macintosh) even when printing black and white photographs.
- Clean the print head; see page 31 for instructions.
- The ink cartridges may be old or low on ink; see page 33.
- Try turning off PhotoEnhance.™ Also check if you're using a special effect that alters image colors, like Sepia.
- Try changing the **Gamma** setting; see your on-screen *Reference Guide* for more information.
- Your printed colors can never exactly match your on-screen colors. However, you can use a color management system to get as close as possible. You can also use your printer's color management features. See your on-screen *Reference Guide* for more information.
- Colors will change slightly after drying. Wait for 24 hours and check your print again to see if the colors look right.

Problems With Paper Feeding

Paper doesn't eject fully or is wrinkled.

- If the paper doesn't eject fully, you may have set the wrong paper size. Press the  paper button to eject the paper, then select the correct paper size.
- If it's wrinkled when it ejects, the paper may be damp or too thin.

Paper doesn't feed correctly or jams in the printer.

- Make sure the paper support extension is pulled up.
- If paper doesn't feed, remove it from the sheet feeder, reload it against the right edge, then slide the left edge guide against the paper.
- If multiple pages feed at once, remove the paper from the sheet feeder, fan the edges to separate the sheets, and carefully reload it.
- If paper jams, press the  paper button to clear the jam. If that doesn't resolve the paper jam, open the cover and remove any jammed paper, including small pieces that may have torn off. Reload the paper and press the  paper button.

If your paper loads incorrectly or jams frequently:

- Use new, smooth, high-quality paper, loaded printable side up. Don't load paper above the arrow mark on the left edge guide.
- Place the paper against the right edge and slide the left edge guide against it, but not too tight.
- Store paper flat to prevent curling.

CD/DVD Printing Problems

Images and text are not centered on the CD/DVD.

Adjust the Print position as described on page 28.

Ink smears on the CD/DVD or printing is too light.

- Make sure you're using ink jet-printable CDs or DVDs.
- Handle the disc carefully and allow the ink to dry for at least 24 hours before playing the disc or inserting it in a drive.
- Adjust the print density as described on page 29.
- Adjust the brightness or contrast. See the EPSON Print CD on-screen Help.

Printed CDs or DVDs are dirty.

Clean the rollers as described on page 22.

The CD/DVD won't feed into the printer.

Make sure you hold the CD/DVD tray level as you load it into the tray guide without tilting it up or down. Don't push in the tray too far, but line it up with the arrows exactly as described on page 23.

Miscellaneous Printout Problems

The image is inverted.

Turn off the **Mirror Image** setting in the Advanced window or the mirror setting in your program. (If you're printing on Epson Iron-On Transfer Paper, the image *should* be inverted.)

The printer prints blank pages.

- Make sure your printer is selected, or is the active printer in the Printer Setup Utility or Print Center (Macintosh).
- The print head nozzles may need cleaning; see page 31.

The margins are incorrect.

- Make sure the paper settings are correct for your paper size.
- Make sure the paper is positioned all the way to the right of the sheet feeder. Slide the left edge guide against the paper.
- See your software documentation for instructions on choosing the correct margins for your paper size. The margins must be within the printable area of the page. See "Printer Specifications" in your on-screen *Reference Guide*.

Image size or position is incorrect.

- Make sure the paper and layout options are set correctly.
- Your images may not match the width/height proportions of the paper size or layout you're using, and may be cropped to fit.

You see incorrect characters.

- Make sure the USB cable is securely connected and meets the system requirements on page 57. Then try printing again.
- Make sure your printer is selected in your software, or is set as the active printer in the Printer Setup Utility or Print Center (Macintosh).
- If you're using a USB hub, connect the printer directly to your computer instead.

Too many copies are printing.

Make sure that the Copies option in your printer software or program is not set for multiple copies.

Uninstalling Printer Software

You may need to uninstall and then reinstall your printer driver and utilities. For example, this might be necessary when you upgrade your operating system. You don't need to uninstall EPSON Print CD or your on-screen *Reference Guide*.

Note:

Do not turn off or disconnect the printer while you are uninstalling the software.

Windows

1. Double-click the **My Computer** icon on your desktop. (If you're using Windows XP click **Start**, then click **My Computer**.)
2. Select the **Control Panel** icon.
3. Select **Add/Remove Programs**.
4. Click **EPSON Printer Software** in the program list and click the **Add/Remove** button (**Change/Remove** button on Windows 2000 and XP).
5. Select **EPSON Stylus Photo R220 Series**, then click **OK**.
6. Follow the on-screen instructions to uninstall the printer software.
7. If you're using Windows 98 or Me, select **EPSON USB Printer Devices** in the program list, then click the **Add/Remove** button.
8. Restart your computer, then see the *Start Here* sheet to reinstall your software.

Macintosh

1. Open your Applications folder, then open the Utilities folder.
2. Double-click the Print Center or Printer Setup Utility icon.
3. Select EPSON Stylus Photo R220, then click Delete.
4. Close Print Center or the Printer Setup Utility.
5. Restart your Macintosh, then see the *Start Here* sheet to reinstall your software.

Where To Get Help

Epson provides technical assistance 24 hours a day through the electronic support services and automated telephone services listed below:

Service	Access
World Wide Web	From the Internet, you can reach Epson Support at http://support.epson.com . At this site, you can download drivers and other files, look at product documentation, access troubleshooting information, and receive technical advice through e-mail.
Automated Telephone Services	A variety of automated help services are available 24 hours a day, seven days a week. To use these services, you must have a touch tone telephone and call (800) 922-8911 . Your Epson SoundAdvice SM code is 82700 . Use this code to quickly select the Epson Stylus Photo R220 Series printer in SoundAdvice.

To speak to a technical support representative, dial:

- U.S.: (562) 276-7296, 6 AM to 8 PM, Pacific Time, Monday through Friday, and 7 AM to 4 PM, Saturday.
- Canada: (905) 709-2567, 6 AM to 6 PM, Pacific Time, Monday through Friday.

Toll or long distance charges may apply.

Please have the following information ready:

- Product name (Epson Stylus Photo R220)
- Product serial number (located on the back of the printer and on its box)
- Proof of purchase (such as a store receipt) and date of purchase
- Computer configuration and operating system version
- Description of the problem

You can purchase genuine Epson ink and paper from an authorized Epson reseller. To find the nearest reseller, please call 800-GO-EPSON (800-463-7766). To purchase online, visit www.epsonstore.com (U.S. sales only). In Canada, please call 800-463-7766 for reseller referral.

Requirements and Notices

Windows System Requirements

To use your printer and its software, your system should have:

- A Microsoft® Windows compatible PC with a Pentium® 300 MHz or faster.
- Microsoft Windows 98SE, Windows Me, Windows 2000, or Windows XP
- At least 256MB RAM (512MB recommended)
- 200MB free hard disk space (300MB or more recommended)
- VGA or better display adapter and monitor
- CD-ROM or DVD drive for installing the printer software
- A Windows-compliant USB port
- A shielded USB “AB” cable up to 6.5 feet (2 meters) long


Macintosh System Requirements

To use your printer and its software, your system should have:

- An Apple® iMac™ series, eMac™, Power Macintosh® G3, G4, or G5, PowerBook®, or iBook® with a built-in USB port
- Macintosh OS X 10.2.4 or later (Macintosh OS X 10.2.4 or later recommended)
- At least 256MB RAM (512MB Recommended)
- At least 200MB free hard disk space (300MB or more recommended)
- VGA or better display
- CD-ROM or DVD drive for installing the printer software
- A shielded USB “AB” cable up to 6.5 feet (2 meters) long

Important Safety Instructions

Before using your printer, read the following safety instructions to make sure you use the printer safely and effectively:

- Be sure to follow all warnings and instructions marked on the printer.
- Use only the type of power source indicated on the printer's label.
- Connect all equipment to properly grounded power outlets. Avoid using outlets on the same circuit as photocopiers or air control systems that regularly switch on and off.
- Place the printer near a wall outlet where the plug can be easily unplugged.
Placez l'imprimante près d'une prise de contact où la fiche peut être débranchée facilement.
- Do not let the power cord become damaged or frayed.
- If you use an extension cord with the printer, make sure the total ampere rating of the devices plugged into the extension cord does not exceed the cord's ampere rating. Also, make sure the total ampere rating of all devices plugged into the wall outlet does not exceed the wall outlet's ampere rating.
- Keep your printer and computer system away from potential sources of electromagnetic interference, such as loudspeakers or cordless telephone base units.
- Avoid locations that are subject to rapid changes in heat or humidity, shocks or vibrations, or dust.
- Leave enough room around the printer for sufficient ventilation.
- Do not place the printer near a radiator or heating vent or in direct sunlight.
- Place the printer on a flat, stable surface that extends beyond the printer base in all directions. The printer will not operate properly if it is tilted or at an angle.
- Turn off and unplug the printer before cleaning. Clean with a damp cloth only. Do not spill liquid on the printer.
- Always turn the printer off using the  power button. It may take a moment for the printer to shut off after you press the button. Don't switch off the power strip or unplug the printer until the printer is off.
- Do not block or cover the openings in the printer's case or insert objects through the slots.
- Except as specifically explained in this manual, do not attempt to service the printer yourself.

- Unplug the printer and refer servicing to qualified service personnel under the following conditions:
If the power cord or plug is damaged; if liquid has entered the printer; if the printer has been dropped or the case damaged; if the printer does not operate normally or exhibits a distinct change in performance. Adjust only those controls that are covered by the operating instructions.

Ink Cartridge Safety Instructions

- Keep ink cartridges out of the reach of children and don't drink the ink.
- Be careful when you handle used ink cartridges; there may be ink remaining around the ink supply port. If ink gets on your skin, wash it off with soap and water. If it gets in your eyes, flush them immediately with water.
- Do not put your hand inside the printer or touch the cartridge during printing.
- Do not move the print head by hand. You may damage the printer.
- Install the ink cartridge immediately after you remove it from its package. Leaving the cartridge unpacked for a long time before use can result in reduced print quality.
- Do not use an ink cartridge beyond the date printed on the package. For best results, use up the ink cartridges within six months of first installing them.
- Store ink cartridges in a cool, dark place.
- After bringing an ink cartridge inside from a cold storage site, allow it to warm up at room temperature for at least three hours before using it.
- Do not shake an ink cartridge; this can cause leakage.
- Do not dismantle the ink cartridges or try to refill them. This could damage the print head.
- Do not touch the green IC chip on the side of the cartridge. This may affect normal operation and printing.
- If you remove an ink cartridge for later use, protect the ink supply area from dirt and dust and store it in the same environment as the printer. Note that there is a valve in the ink supply port, making covers or plugs unnecessary, but care is needed to prevent the ink from staining items that the cartridge touches. Do not touch the ink cartridge ink supply port or surrounding area.
- Before transporting the printer, make sure the print head is capped in the far right position and the ink cartridges are in place. Tape the ink cartridge holder to the printer case to make sure it remains in the proper position.

FCC Compliance Statement

For United States Users

This equipment has been tested and found to comply with the limits for a Class B digital device, pursuant to Part 15 of the FCC Rules. These limits are designed to provide reasonable protection against harmful interference in a residential installation. This equipment generates, uses, and can radiate radio frequency energy and, if not installed and used in accordance with the instructions, may cause harmful interference to radio or television reception. However, there is no guarantee that interference will not occur in a particular installation. If this equipment does cause interference to radio and television reception, which can be determined by turning the equipment off and on, the user is encouraged to try to correct the interference by one or more of the following measures:

- Reorient or relocate the receiving antenna.
- Increase the separation between the equipment and receiver.
- Connect the equipment into an outlet on a circuit different from that to which the receiver is connected.
- Consult the dealer or an experienced radio/TV technician for help.

WARNING: The connection of a non-shielded equipment interface cable to this equipment will invalidate the FCC Certification of this device and may cause interference levels which exceed the limits established by the FCC for this equipment. It is the responsibility of the user to obtain and use a shielded equipment interface cable with this device. If this equipment has more than one interface connector, do not leave cables connected to unused interfaces. Changes or modifications not expressly approved by the manufacturer could void the user's authority to operate the equipment.

For Canadian Users

This Class B digital apparatus complies with Canadian ICES-003.

Cet appareil numérique de la classe B est conforme à la norme NMB-003 du Canada.

Declaration of Conformity

According to 47CFR, Part 2 and 15 for Class B Personal Computers and Peripherals; and/or CPU Boards and Power Supplies used with Class B Personal Computers:

We: Epson America, Inc.
Located at: MS: 3-13
3840 Kilroy Airport Way
Long Beach, CA 90806-2469
Telephone: (562) 290-5254

Declare under sole responsibility that the product identified herein, complies with 47CFR Part 2 and 15 of the FCC rules as a Class B digital device. Each product marketed is identical to the representative unit tested and found to be compliant with the standards. Records maintained continue to reflect the equipment being produced can be expected to be within the variation accepted, due to quantity production and testing on a statistical basis as required by 47CFR §2.909. Operation is subject to the following two conditions: (1) this device may not cause harmful interference, and (2) this device must accept any interference received, including interference that may cause undesired operation.

Trade Name: Epson
Type of Product: Ink Jet Printer
Model: B261A

ENERGY STAR Compliance

As an ENERGY STAR® Partner, Epson has determined that this product meets the ENERGY STAR guidelines for energy efficiency. The EPA ENERGY STAR office equipment program is a voluntary partnership with the computer and office equipment industry to promote the introduction of energy-efficient personal computers, monitors, printers, fax machines, and copiers in an effort to reduce air pollution caused by power generation.



Epson America, Inc. Limited Warranty

What Is Covered: Epson America, Inc. (“Epson”) warrants to the original retail purchaser that the EPSON printer covered by this limited warranty statement, if purchased and operated only in the United States or Canada, conforms to the manufacturer’s specifications and will be free from defects in workmanship and materials for a period of one (1) year from the date of original purchase. Epson also warrants that the consumable ink cartridges enclosed with the printer will perform to the manufacturer’s specified usage, which usage may expire before the expiration of the limited warranty for the EPSON printer. For warranty service, you must provide proof of the date of original purchase.

What Epson Will Do To Correct Problems: Should your EPSON printer prove defective during the warranty period, please call the EPSON ConnectionSM at (562) 276-7296 (U.S.) or (905) 709-2567 (Canada) for warranty repair instructions and return authorization. An Epson service technician will provide telephone diagnostic service to determine whether the printer requires service. If service is needed, Epson will, at its option, exchange or repair the printer without charge for parts or labor. If Epson authorizes an exchange for the defective unit, Epson will ship a replacement printer to you, freight prepaid, so long as you use an address in Canada or the U.S. (excluding Puerto Rico and U.S. Possessions). Shipments to other locations will be made freight collect. You are responsible for securely packaging the defective unit and returning it to Epson within five (5) working days of receipt of the replacement. Epson requires a debit or a credit card number to secure the cost of the replacement printer in the event that you fail to return the defective one. If your printer is being repaired, Epson will direct you to send your printer to Epson or its authorized service center, where the printer will be fixed and sent back to you. You are responsible for packing the printer and for all costs to and from the Epson authorized service center. When warranty service involves the exchange of the printer or a part, the item replaced becomes Epson property. The replacement printer or part may be new or refurbished to the Epson standard of quality, and, at Epson’s option, may be another model of like kind and quality. Epson’s liability for replacement of the covered printer will not exceed the original retail selling price of the covered printer. Exchange products and parts assume the remaining warranty period of your original product covered by this limited warranty.

What This Warranty Does Not Cover: This warranty does not apply to refurbished or reconditioned products. This warranty covers only normal use in the United States and Canada. Using this product for continuous production or similar high duty purposes is not considered normal use; damage, maintenance or service from such use will not be covered under this warranty. This warranty is not transferable. This warranty does not cover any color change or fading of prints or reimbursement of materials or services required for reprinting. This warranty does not cover damage to the EPSON product caused by parts or supplies not manufactured, distributed or certified by Epson. This warranty does not cover ribbons, ink cartridges or third party parts, components, or

peripheral devices added to the EPSON product after its shipment from Epson, e.g., dealer or user-added boards or components. Epson is not responsible for warranty service should the Epson label or logo or the rating label or serial number be removed or should the product fail to be properly maintained or fail to function properly as a result of misuse, abuse, improper installation, neglect, improper shipping, damage caused by disasters such as fire, flood, and lightning, improper electrical current, software problems, interaction with non-Epson products, or service other than by an Epson Authorized Servicer. If a claimed defect cannot be identified or reproduced, you will be held responsible for the costs incurred.

THE WARRANTY AND REMEDY PROVIDED ABOVE ARE EXCLUSIVE AND IN LIEU OF ALL OTHER EXPRESS OR IMPLIED WARRANTIES INCLUDING, BUT NOT LIMITED TO, THE IMPLIED WARRANTIES OF MERCHANTABILITY, NON-INFRINGEMENT OR FITNESS FOR A PARTICULAR PURPOSE. SOME LAWS DO NOT ALLOW THE EXCLUSION OF IMPLIED WARRANTIES. IF THESE LAWS APPLY, THEN ALL EXPRESS AND IMPLIED WARRANTIES ARE LIMITED TO THE WARRANTY PERIOD IDENTIFIED ABOVE. UNLESS STATED HEREIN, ANY STATEMENT OR REPRESENTATIONS MADE BY ANY OTHER PERSON OR FIRM ARE VOID. EXCEPT AS PROVIDED IN THIS WRITTEN WARRANTY, NEITHER EPSON AMERICA, INC. NOR ITS AFFILIATES SHALL BE LIABLE FOR ANY LOSS, INCONVENIENCE, OR DAMAGE, INCLUDING DIRECT, SPECIAL, INCIDENTAL OR CONSEQUENTIAL DAMAGES, RESULTING FROM THE USE OR INABILITY TO USE THE EPSON PRODUCT, WHETHER RESULTING FROM BREACH OF WARRANTY OR ANY OTHER LEGAL THEORY.

In Canada, warranties include both warranties and conditions.

Some jurisdictions do not allow limitations on how long an implied warranty lasts, and some jurisdictions do not allow the exclusion or limitation of incidental or consequential damages, so the above limitations and exclusions may not apply to you. This warranty gives you specific legal rights and you may have other rights which vary from jurisdiction to jurisdiction.

To find the Epson Authorized Reseller nearest you, visit our website at:
<http://www.epson.com>.

To find the Epson Customer Care Center nearest you, visit <http://support.epson.com>.

You can also write to:

Epson America, Inc., P.O. Box 93012, Long Beach, CA 90809-3012

Index

A

- Accessories, 55
- Aligning print head, 39 to 40
- Automatic mode, Macintosh, 14

B

- Banding, 48 to 49
- Basic printing
 - Macintosh, 13 to 16
 - Windows, 9 to 12
- Blank pages, 52
- Blurry images, 49
- BorderFree printing, 18 to 21

C

- Cable, printer, 57
- Cancelling printing
 - Windows, 12
- CDs
 - adjusting print density, 29 to 30
 - adjusting print position, 28 to 29
 - designing, 25 to 26
 - inserting in printer, 23 to 24
 - printing on, 22 to 30
 - printing problems, 51 to 52
- Characters, incorrect, 53
- Checking printer, 45 to 46
- Cleaning
 - print head, 31 to 32
 - printer, 41
 - rollers, 22
 - sheets, 41
- Color problems, 50

ColorSync, 14

Controlling printing

Windows, 12

Copies setting, Macintosh, 14

D

- Default printer settings, 12
- DVDs, *see* CDs

E

- Edge-to-edge printing, 18 to 21
- Epson
 - accessories, 55
 - help, 54 to 55
 - ink, 35
 - papers, 8, 17, 18
 - Print CD, 27 to 30
 - Store, 55

F

- Faint images, 49 to 50
- Full bleed printing, 18 to 21

G

- Gamma setting, 14
- Glossy Photo Paper, 17
- Grainy prints, 50

H

- Head Cleaning utility, 31 to 32
- Help, Epson, 54 to 55
- High Speed setting, 48

I

Incorrect characters, 53

Incorrect colors, 50

Ink cartridge

level of ink in, 33

ordering, 35

replacing, 33 to 38

safety instructions, 37, 59

Ink Jet Transparencies, 17

Ink level, checking

Macintosh, 34

Windows, 33

Installation problems, 46 to 47

Inverted image, 52

Iron-On Transfer Paper, 17

J

Jams, paper, 51

L

Layout problems, 52

Layout settings

Macintosh, 14

Windows, 11

Luster Photo Paper, 17

M

Macintosh

basic printing, 13 to 16

system requirements, 57

uninstalling software, 54

Maintaining printer, 31 to 42

Marginless printing, 18 to 21

Margins, incorrect, 52

Media Type setting, 17

MicroWeave setting, 48

Mirror image, 52

Monitoring ink level

Macintosh, 34

Windows, 33

Moving printer, 42

N

Noise, printer, 48

Nozzle check, 32

P

Page Setup, Macintosh, 13

Paper

Epson, 8, 17, 18

feeding problems, 50 to 51

loading, 7 to 8

orientation, 10, 13

size, 10, 13

Paper Type setting, 10, 17

Premium Glossy Photo Paper, 17

Print CD software, 27 to 30

Print dialog box

Macintosh, 13

Windows, 9

Print head

aligning, 39 to 40

cleaning, 31 to 32

Print Head Alignment utility, 39 to 40

Print position check paper, 28 to 29

Print quality problems, 48 to 50

Print window, 9, 13

Printer

cable, 57

check, 45 to 46

cleaning, 41

maintaining, 31 to 42

noise, 48

problems, 43 to 53

transporting, 42

P

- Printing
 - basic, 9 to 16
 - BorderFree, 18 to 21
 - CDs and DVDs, 22 to 30
 - controlling, 12

Printing, slow, 48

P

- Problems
 - CD printing, 51 to 52
 - installing software, 46 to 47
 - miscellaneous, 52 to 53
 - paper feeding, 50 to 51
 - print quality, 48 to 50
 - printer, 43 to 53

Q

Quality Option setting, 10

Quality/Speed setting, 14

S

Safety instructions, 58 to 59

Self Adhesive Sheets, 17

Semigloss Photo Paper, 17

Slow printing, 48

S

- Software
 - Print CD, 27 to 30
 - problems, solving, 46 to 47
 - uninstalling, 53 to 54

Stopping printing

Windows, 12

System requirements, 57

T

Transparencies, 17

Transporting printer, 42

Troubleshooting, 43 to 55

Type setting, 10

U

Uninstalling software, 53 to 54

USB, 57

U

Head Cleaning, 31 to 32

Nozzle Check, 32

Print Head Alignment, 39 to 40

W

W

basic printing, 9 to 12

system requirements, 57

uninstalling software, 53

Epson Ink Jet Papers and Ink Cartridges

Use Epson paper and inks to get the same photo quality results that have earned Epson's printers all of their awards! Epson papers are specially coated to work with genuine Epson inks. Here are details about just a few of Epson's papers:

Premium Glossy Photo Paper

Water-resistant, photographic-weight paper with a high gloss finish. Perfect for all photographic applications and available in a variety of sizes. Framing is recommended for this paper type.



Glossy Photo Paper

Photo quality, heavyweight glossy paper available in a variety of sizes, including letter and 4 x 6. Perfect for color photo keepsakes of snapshots, reprints, and enlargements.

Epson Matte Paper Heavyweight

Heavyweight, bright white, ultra-smooth coated paper with a matte finish. Perfect for photographs, signs, and crafts.



Epson Ink Cartridges



For best results, always use these genuine Epson ink cartridges:

Black:	T048120
Cyan:	T048220
Magenta:	T048320
Yellow:	T048420
Light Cyan:	T048520
Light Magenta:	T048620
Color Multipack:	T048920



For more information on other Epson products and fun project ideas, look for the Epson Print Lab Series at **www.printlabseries.com**.



See the inside back cover for a list of EPSON papers and ink cartridges, and ordering information.

How To Order Epson Ink and Paper

You can purchase genuine Epson ink and paper from an authorized Epson reseller. To find the nearest reseller, please call 800-GO-EPSON (800-463-7766). To purchase online, visit www.epsonstore.com (U.S. sales only). In Canada, please call (800-463-7766) for dealer referral.

Epson Ink Cartridges

Black:	T048120	Cyan:	T048220	Magenta:	T048320
Yellow:	T048420	Light Cyan:	T048520	Light Magenta:	T048620

Paper name	Size	Part number
Epson Premium Bright White Paper	Letter (8.5 x 11 inches)	S041586
Epson Photo Quality Ink Jet Paper	Letter (8.5 x 11 inches)	S041062
	A4 (8.3 x 11.7 inches)	S041061
	Legal (8.5 x 14 inches)	S041067
Epson Photo Quality Ink Jet Cards	A6 (4.1 x 5.8 inches)	S041054
Epson Glossy Photo Paper	Borderless 4 x 6 inches	S041809
	4 x 6 inches, perforated edges	S041134/S041671
	Letter (8.5 x 11 inches)	S041141/S041649/ S041272/S041271
Epson ColorLife® Photo Paper	Letter (8.5 x 11 inches)	S041500
Epson Matte Paper Heavyweight	Borderless 8 x 10 inches	S041467
	Letter (8.5 x 11 inches)	S041457
Epson Double-Sided Matte Paper	Letter (8.5 x 11 inches)	S041568
Epson Ultra Premium Glossy Photo Paper	Borderless 4 x 6 inches	S041934
	Letter (8.5 x 11 inches)	S041935
Epson Premium Glossy Photo Paper	Borderless 4 x 6 inches	S041727/S041808
	Borderless 5 x 7 inches	S041464
	Borderless 8 x 10 inches	S041465
	Letter (8.5 x 11 inches)	S041286/S041667
Epson Premium Semigloss Photo Paper	Letter (8.5 x 11 inches)	S041331
Epson Premium Luster Photo Paper	Letter (8.5 x 11 inches)	S041405
Epson Photo Quality Self Adhesive Sheets	A4 (8.3 x 11.7 inches)	S041106
Epson Ink Jet Transparencies	Letter (8.5 x 11 inches)	S041064
Epson Iron-On Transfer Paper	Letter (8.5 x 11 inches)	S041153
Epson Glossy Photo Greeting Card Kit	Letter (8.5 x 11 inches), perforated edges	S041606
Epson Photo Stickers®	A6 (4.1 x 5.8 inches)	S041144
Epson Semigloss Scrapbook Photo Paper	Letter (8.5 x 11 inches)	SCR1001
PremierArt™ Matte Scrapbook Photo Paper for Epson	Letter (8.5 x 11 inches)	SCR1002

The availability of paper types varies by location.