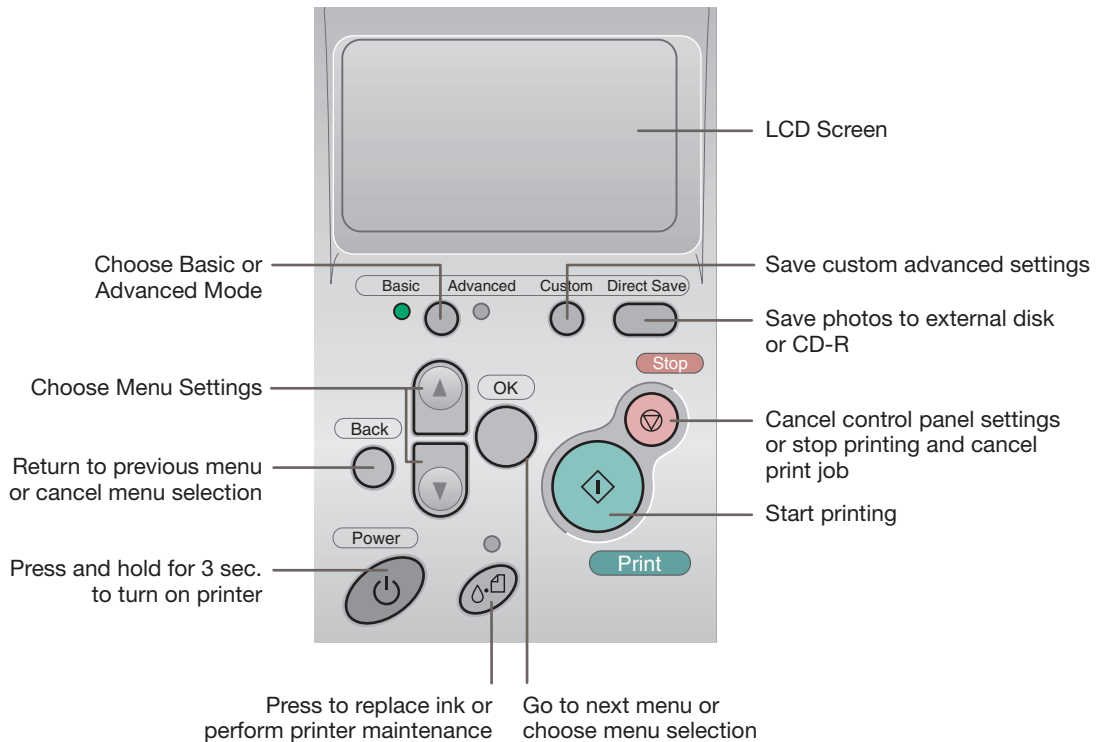


Quick Reference

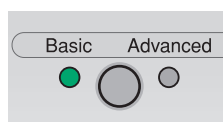
Printing Without a Computer

Here's how to use the control panel:



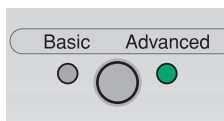
Choosing Basic or Advanced Print Mode

When should you use each mode? You can use Basic mode for quick and easy 4 x 6" photo prints. For more options, choose Advanced mode. Just press the **Basic/Advanced** button to choose Basic or Advanced mode (indicated by the green light).



More Options for Standalone Printing

For more printing options, you can press the mode button and switch to Advanced mode.



Advanced mode lets you expand your standalone printing options with the following features:

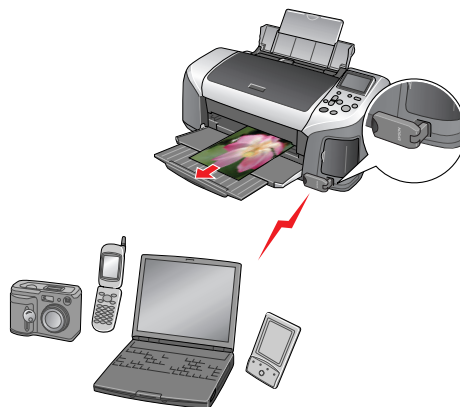
- Choose from a variety of paper types
- Specify paper sizes
- Choose layouts for printing, such as multiple photos per page, jewel case insert, or a single print on half of the page.
- Print photo information such as time, date, and image exposure settings
- Use filters for special effects
- Use P.I.M., Exif Print, or PhotoEnhance™ automatic color correction
- Adjust contrast, brightness, sharpness, saturation, and image quality
- Adjust what part of the photo appears in your print with the Crop and Fit to Frame options

See your *User's Guide* for instructions on using all these features.

NOTE: If you change your settings in Advanced mode, you may want to reset the defaults before printing in Basic mode. See your *User's Guide* for details.

Other Great Features

You can use a Bluetooth®-enabled PDA, phone, computer, or other device to send images to your printer wirelessly with an optional Bluetooth photo print adapter. See your *User's Guide* for instructions.



If you have a PictBridge- or USB DP-enabled camera, you can print photos directly from your camera. If your camera has P.I.M. or Exif Print support, you can use those features when printing directly from the camera.



Exif Print



You can create great-looking custom CDs or DVDs. See your *User's Guide* for instructions on standalone CD/DVD printing and using EPSON Print CD to print directly on CDs or DVDs.

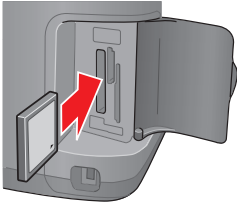


The printer lets you save the photo files from your camera's memory card directly to a CD-R or Zip disk, without a computer. You can also print photos from CDs and Zip disks. See your *User's Guide*.

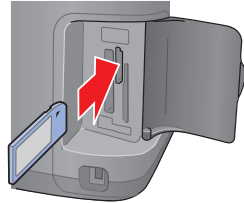
You can maintain your printer right from its control panel. You can clean the print head if you see banding or other image quality issues, or you can replace an ink cartridge using the control panel. See your *User's Guide* for instructions.

Inserting Your Memory Card

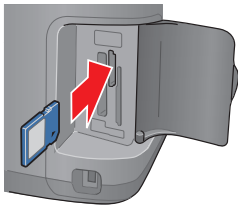
See below to install your memory card:



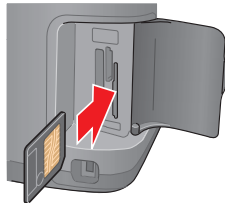
CompactFlash™ or
Microdrive™ (left)



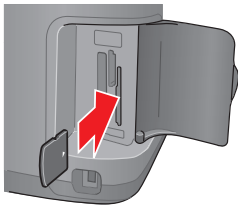
Memory Stick®
(middle)



SD (Secure Digital) Card
or MMC (MultiMediaCard)
(middle)



SmartMedia™ card
(right)



xD Picture Card™
(right)

When you insert the card, you see a message indicating that you have inserted a memory card. The printer reads and counts the images on your card.

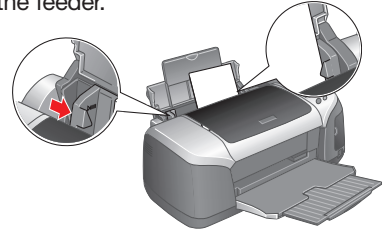
NOTE: The printer recognizes the first 999 files only. If your photos aren't recognized, see your User's Guide for troubleshooting information.

Loading 4 x 6" Premium Glossy Photo Paper

In Basic mode, you can print 4 x 6" photos on EPSON® Premium Glossy Photo Paper.

- 1 Place the paper against the right side of the feeder.

- 2 Slide the left edge guide against the paper.



Printing an Index

If you don't have the preview monitor, you'll need to print an index of your images to choose the photo you want to print.

- 1 Press the mode button to choose Basic mode.
- 2 Press the ▲ or ▼ button to highlight **Select Photo** and press **OK**.
- 3 Press the ▼ button to choose **Index**.



NOTE: If you have a large number of photos and you only want to print a range of a few to choose from, select Range and press OK. Then use the ▲ or ▼ button to choose a photo to start the range under From and press OK, then choose a photo to stop at under To.

- 4 Press **OK**.
- 5 Make sure **Copies** is highlighted and press **OK**.

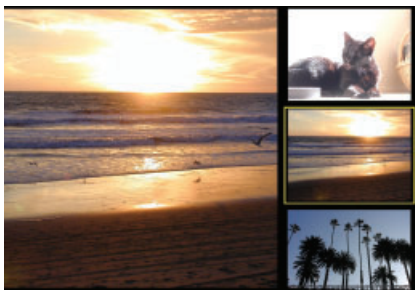


- 6 Choose **1 each** and press **OK**.
- 7 Press the ◊ **Print** button.

Previewing Your Photos

If your printer includes the preview monitor, you can use it to preview and select your photos.

- 1 Press the mode button to choose Basic mode.
- 2 Press the ▲ or ▼ button to highlight **Select Photo** and press **OK**.
- 3 Use the ▲ and ▼ buttons to scroll through your photos. (Press and hold one of the buttons to scroll quickly.)
- 4 When the photo you want to print is shown on the left and highlighted in yellow on the right, press **OK** to select it.



To print, continue with step 5 under “Printing a 4 x 6” Photo.”

Printing a 4 x 6" Photo

- 1 If you printed an index, look at your index and find the photo you want to print. The number is below the photo.

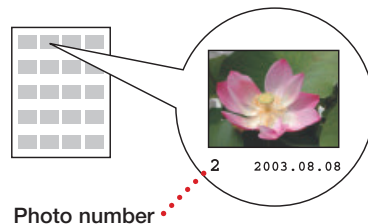
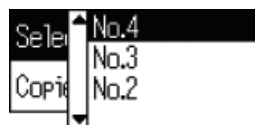


Photo number

- 2 Press the ▲ or ▼ button to highlight **Select Photo**, then press **OK**.
- 3 Press the ▲ or ▼ button and scroll until the number of your photo is highlighted. (Press and hold one of the buttons to scroll quickly.)



- 4 Press **OK**.
- 5 Press **OK** again and use the ▲ or ▼ buttons to choose a number of copies (1-100).



- 6 Press **OK**, check your settings, then press the **Print** button to print your photo.

*NOTE: If you see unexpected results and you have made settings in Advanced mode, see your **User's Guide** to go back to the default print settings.*