

Epson Stylus® Photo R320

# Start Here



CPD-18377  
4050614-00  
XXX

## 1 Unpack

- 1** Remove everything from the box.



Printer



Ink cartridges



Small CD insert



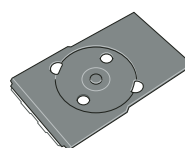
Quick Reference



Printer Software  
CD-ROM



CD position  
check paper

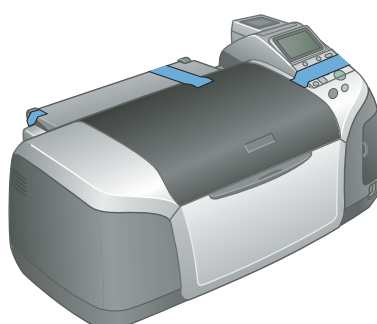


CD/DVD tray



Printer Basics

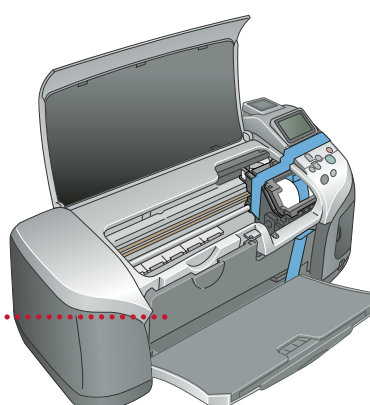
- 2** Remove all the tape and packing material from the printer.



- 3** Open the output tray and the printer cover. Then remove the tape.

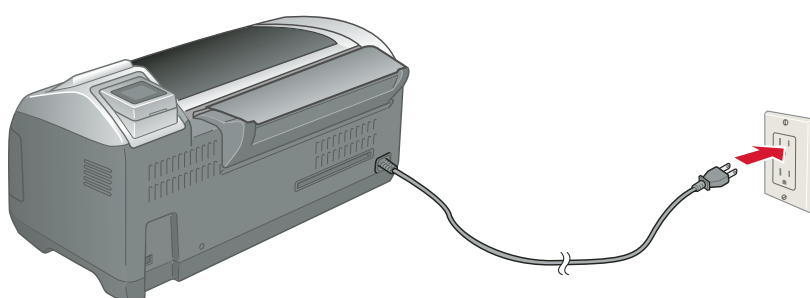
Make sure the CD/DVD tray guide is closed completely.

Make sure the tray guide is up after removing the tape



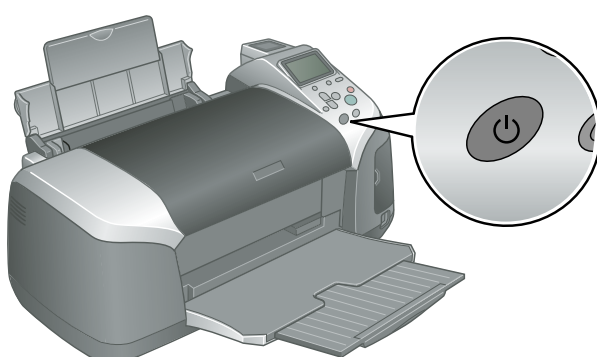
# 2 *Turn On the Printer*

- 1 Plug the printer's power cord into a grounded electrical outlet.



**STOP:** Do not connect the printer to your computer yet. Wait until you are instructed to connect the USB cable in section 5, "Install Software."

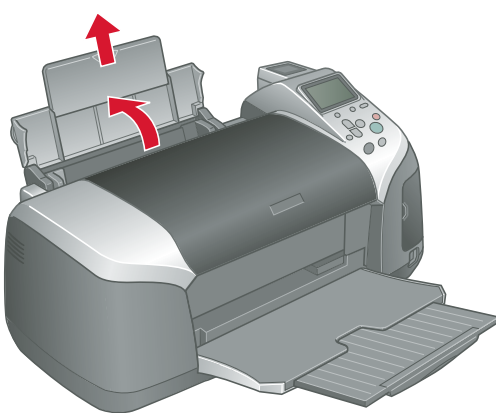
- 2 Press the  **Power** button to turn on the printer.



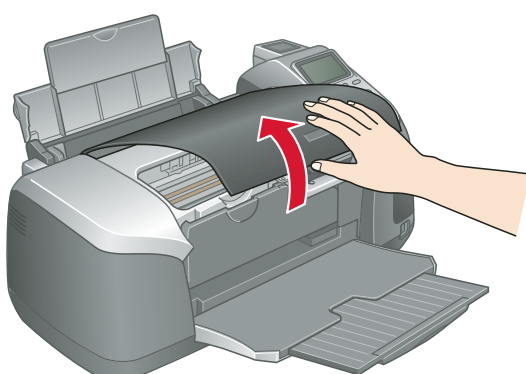
**CAUTION:** Never use an external switch, such as a wall switch or power strip switch, to turn the printer on or off.

# 3 *Install the Ink Cartridges*

- 1 Flip open the paper support and pull up the extension.



- 2 Open the printer cover.



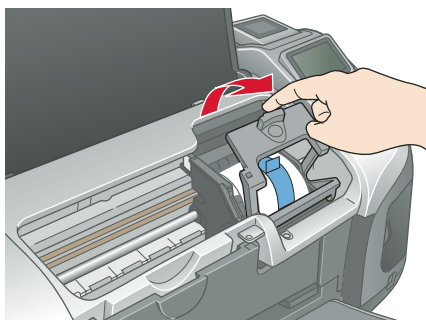
**continue**

- 3** Unwrap the ink cartridges.

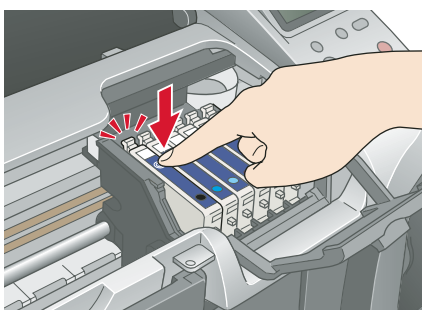


Don't touch the green circuit board or remove any labels

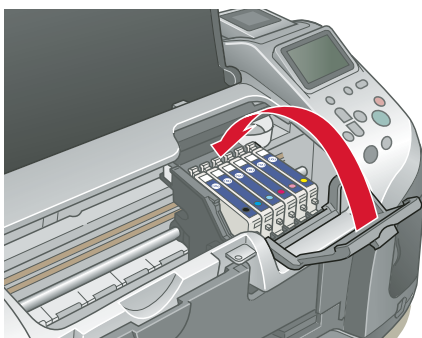
- 4** Open the cartridge cover and remove the paper insert.



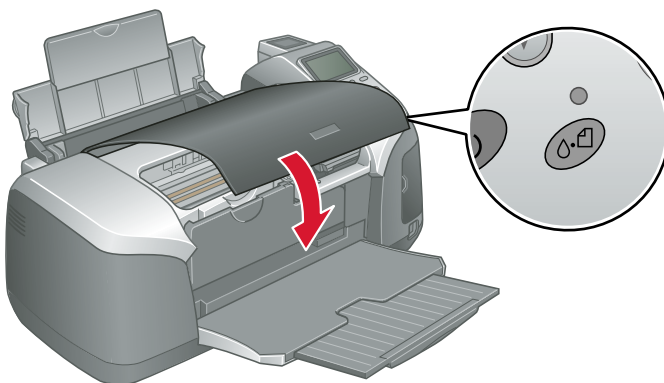
- 5** Lower each cartridge into its holder with the green circuit board facing the front.  
The color of the cartridge label should match the marker above the cartridge holder.  
Then gently push each ink cartridge down until it is firmly seated.



- 6** Close the cartridge cover.



- 7** Press the  **Maintenance** button and close the printer cover.



**CAUTION:** Don't turn off the printer or interrupt charging while the light is flashing or you'll waste ink.

A progress bar is displayed on the LCD panel during ink charging.

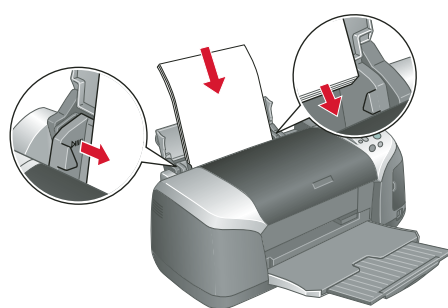
- 8** After ink charging is finished, press **OK**.



# 4 Load Paper

- 1 Fan a few sheets of paper and load them against the right side of the sheet feeder.
- 2 Slide the left edge guide against the paper.

*NOTE: For instructions on loading and printing on CDs or DVDs, see your Printer Basics book.*

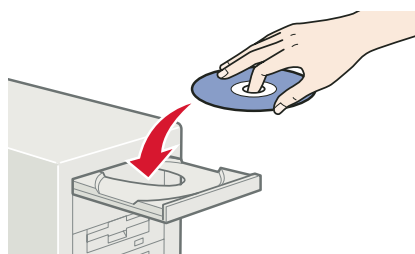


# 5 Install Software

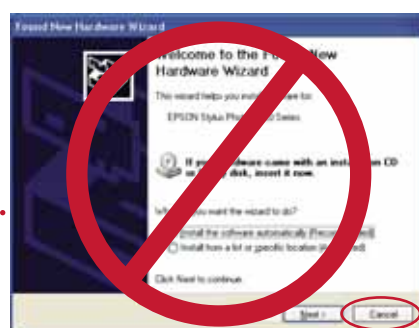
## Windows®

The software works with Windows 98SE, Me, 2000, and XP. Make sure your printer is NOT connected to your computer, then follow the steps below.

- 1 Turn on your computer. Wait for the system to start up, then insert the Epson® CD-ROM in your drive.





*NOTE: If you see a screen like this, click **Cancel** and disconnect the printer from your computer. Then follow the steps below.*

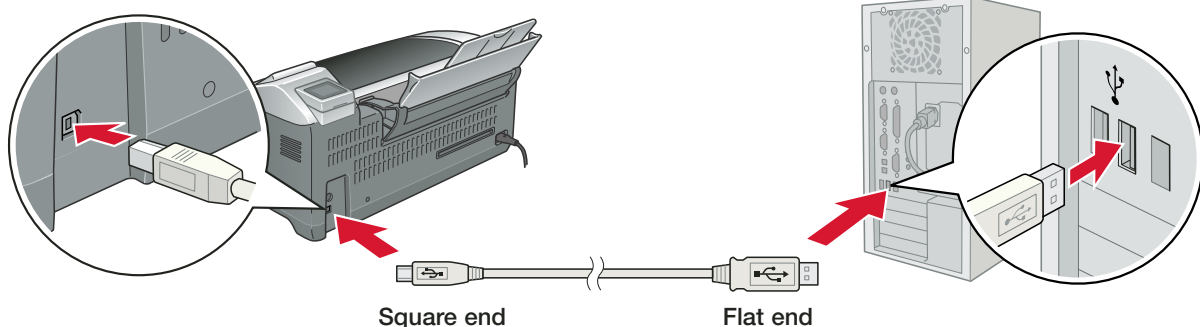


- 2 Read the license agreement that appears and click **AGREE**.
- 3 You see a message like this: ..... Click **OK** to begin installing your printer driver.



- 4 When you see this screen, connect the  square end of your USB cable to the back of the printer and the  flat end of the USB cable to your computer. (You can connect to any open port.) .....

*NOTE: For Windows XP, if you don't have USB 2.0, you see a message. Click the Close button to close the message.*



Wait while Windows detects your hardware.....

- 5 When you see this screen, click **Continue**.
- 6 Follow the on-screen instructions to install your software.



**continue**

**7** When installation is complete, you see this screen:.....

Click each title to learn more about it. If you want to install the software, follow the on-screen instructions.

**8** When you're done installing software, click **Exit**. The registration screen appears.

**9** Follow the on-screen instructions to register your printer.

**10** When you see a message telling you to restart your computer, click **OK**. Remove the CD, then restart your computer.



*NOTE: Be sure to restart your computer to enable all of your printer software features.*

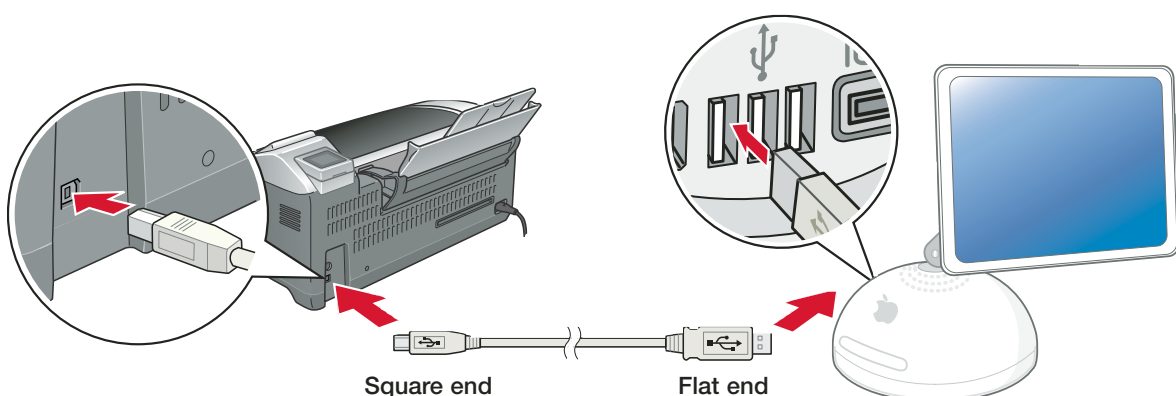


You're ready to print! See section 6, "Print."

## Macintosh®

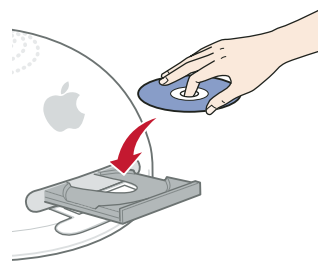
The software works with Mac OS® 9.2.x, and Mac OS X 10.2.x through 10.3.x.

**1** Connect your printer to your computer: connect the  square end of your USB cable to the printer and the  flat end of the USB cable to your computer. (You can connect to any open port.)



**2** Turn on your Macintosh. Wait for it to start up, then insert the Epson CD-ROM in your drive.

**3** Double-click the CD-ROM icon, if necessary, then double-click  EPSON.



**4** Read the license agreement that appears and click **AGREE**.

You see the Install Menu.....

**5** Click **Install Printer Driver and Utilities** and follow the on-screen instructions. (In Mac OS X, you will need to enter your Administrator password for each item.)



**6** Click **Install EPSON Print CD**, then click **Install** and follow the on-screen instructions.

*NOTE: EPSON Print CD is not available for Mac OS 9.*

**7** Click **Install Optional Software**.

You see the following menu: .....

**8** Click each title to learn more about it. If you want to install the software, follow the on-screen instructions.

**9** When you're finished installing software, close any open windows on the screen and click **Back** at the Optional Software menu.

**10** From the Install Menu, click **Install Printer Manual** to install your on-screen Reference Guide.

**11** When you're done installing software, click **Exit**. The registration screen appears.

**12** Follow the on-screen instructions to register your printer.



Go to the section for your operating system to finish setting up your printer.

**continue**



Mac OS X 10.2.x through 10.3.x

- 1

Open the **Applications** folder, then open the **Utilities** folder and select **Print Center**, or **Printer Setup Utility**.
- If you see this screen, click **Add**.
- 2

On the Printer List screen, click the **Add** button.
- 3

On the next screen, select **USB** from the pop-up menu.
- 4

Click **Stylus Photo R320**.



*NOTE: If the Stylus Photo R320 doesn't appear, make sure it is turned on and securely connected to your Macintosh.*

- 5

Click the **Add** button. You see the Stylus Photo R320 in the Printer List.
- 6

Quit Print Center or the Printer Setup Utility.



*NOTE: Be sure to restart your Macintosh to enable all of your printer software features.*

You're ready to print! See section 6, "Print."

Mac OS 9.2.x

Open the **Chooser** from the Apple® menu, then select these options:

- **SP R320 Series**
- Your **USB** port
- Background printing (on or off)

Close the **Chooser**.

*NOTE: Be sure to restart your Macintosh to enable all of your printer software features.*

You're ready to print! See section 6, "Print."

6 Print

Now you're ready to print. For instructions, use these resources:

- Your *Printer Basics* book

Learn about loading paper, printing, maintaining your printer, solving problems, and contacting Epson.
- Your *Quick Reference* card

See how easy it is to print without a computer.
- Your on-screen *Reference Guide*

Double-click the **ESPR320 Reference Guide** icon on your desktop to view more information about your printer.

