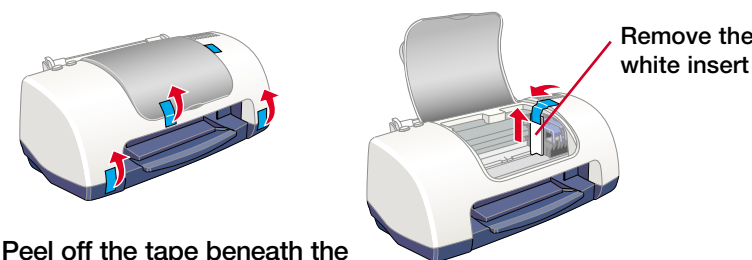


Start Here



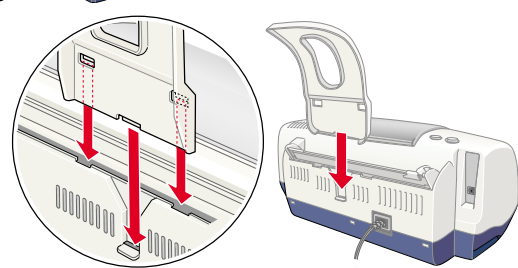
1 Unpack

- 1 Remove the tape and packing material from the printer.



- 2 Peel off the tape beneath the cover and remove the insert.

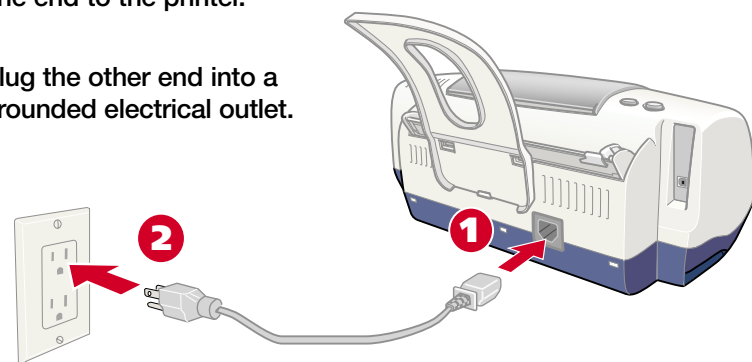
- 3 Insert the paper support into the three slots on the back of the printer.



2 Power On

- 1 Find the power cord that came in the box and connect one end to the printer.

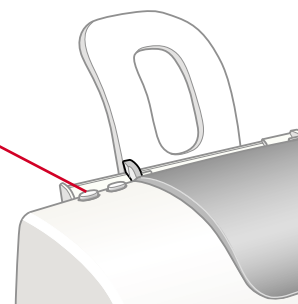
- 2 Plug the other end into a grounded electrical outlet.



continue.....

- 3 Press down firmly on the power button until the green power light comes on.

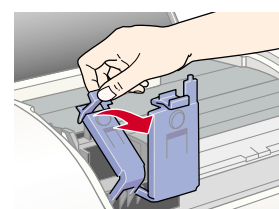
Power button



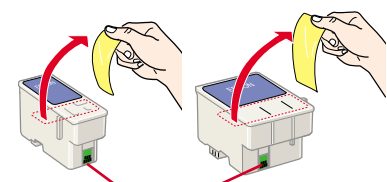
CAUTION: Use only the printer's power button to turn the printer on or off.

3 Load Ink

- 1 Open the cover and lift the ink cartridge clamps.

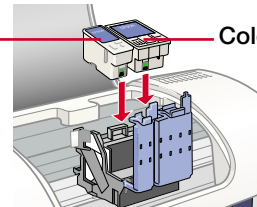


- 2 Unpack the ink cartridges that came with your printer and remove the yellow tape.



- 3 Insert both cartridges.

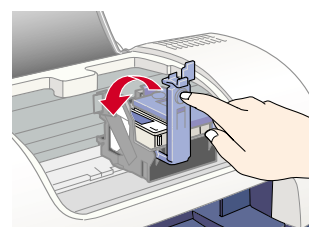
Black Color



Don't touch this part

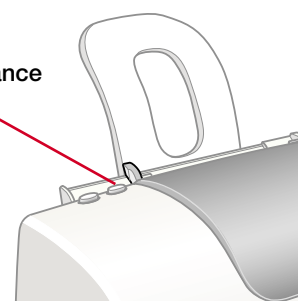
CAUTION: You must install both cartridges or the printer won't work.

- 4 Press down on the cartridge clamps until they click shut.



- 5 Press the maintenance button. The green power light flashes and you hear the printer charge its ink.

Maintenance button

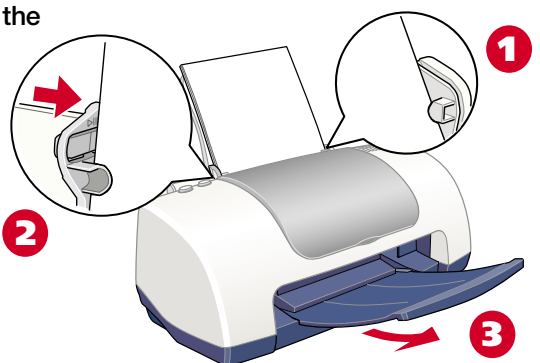


CAUTION: Never turn off the printer while the green power light is flashing.

4 Load Paper

- 1 Set some paper behind the tab on the right edge guide. Don't force it in.

- 2 Press in the locking tab on the left edge guide and slide it against the paper.



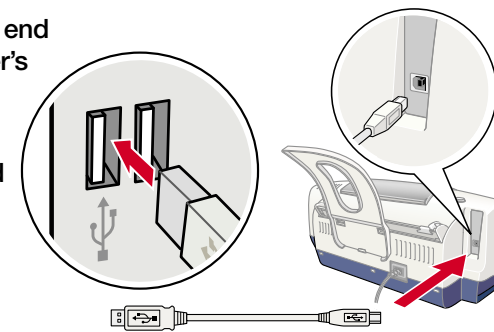
- 3 Pull out the output tray.

NOTE: If you're using special EPSON paper, make sure you load the brighter, whiter side face up.

5 Attach the Cable

- 1 Connect the square end of the USB cable to your printer's USB port.

- 2 Connect the flat end of the cable to any available USB port on your computer.



6 Install the Software

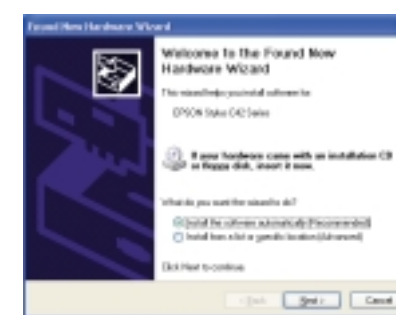
Follow the steps below to install the printer software on Windows® XP. To install software on Windows 98, Me, or 2000, see the booklet that came with your printer, *Installing Software for Windows 98, Windows Me, and Windows 2000*.

For instructions on installing your Macintosh® software, see the back of this sheet.

Windows XP

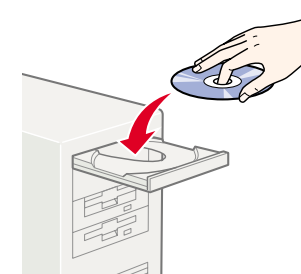
- 1 Turn on the computer. (Make sure your printer is still on.)

- 2 Wait for this screen to appear.



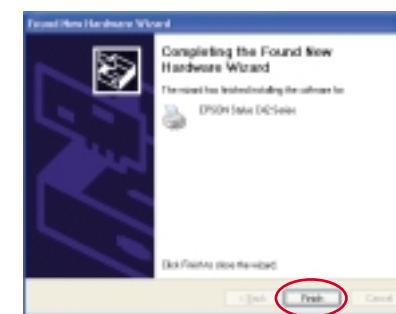
NOTE: If you don't see the Found New Hardware screen, see "Problems?" on the back of this sheet.

- 3 Put the EPSON CD-ROM in your drive.



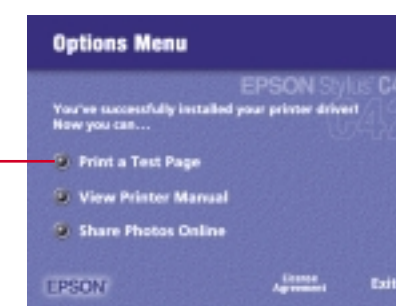
- 4 Wait while the files are copied to your computer.

- 5 Click **Finish** when you see this screen.



- 6 You see the license agreement. Read the agreement and click **Agree**.

- 7 You see this screen. Make sure you have paper in the printer, then click **Print a Test Page** to check that your printer is set up correctly.



- 8 After the test page prints, click **View Printer Manual**.

continue.....

- 9 Click **Install Printer Manual** on the next screen to copy the **ES C42 Manual** icon to your desktop. (Then whenever you want to view the manual, just double-click the icon.)

NOTE: You need Adobe® Acrobat® Reader® to view your manual. If you don't have it, click **Install Adobe Acrobat Reader** and follow the on-screen instructions.

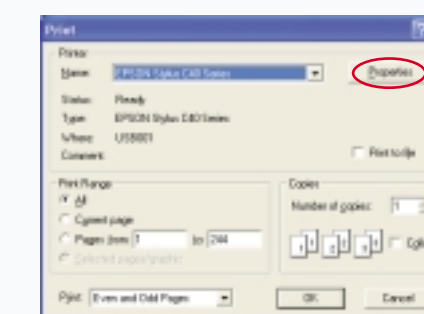
- 10 When you're done, click **Back** to return to the Options Menu, then **Exit** to close it.

- 11 When you see the EPSON Product Registration screen, register your printer as instructed. Then remove your CD-ROM.

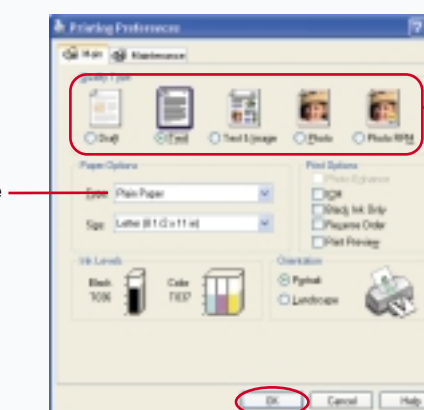
You're ready to start printing! Follow the instructions below.

Printing from Windows

- 1 Open a letter-size document in a program.
- 2 Click the File menu and select **Print**. You see a screen like this:



- 3 Click **Properties** or **Preferences**. You see this screen:



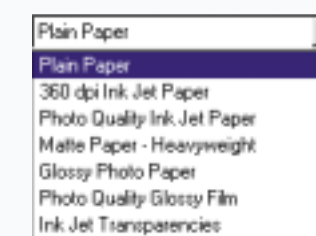
Paper type

Type of document

- 4 Select the type of document you're printing:

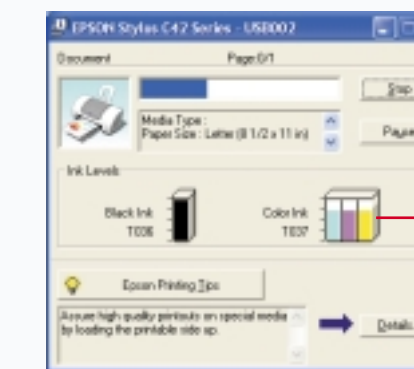
- **Draft:** For rough drafts on plain paper. Saves ink.
- **Text:** For text-only documents, like letters or reports.
- **Text & Image:** For documents that have both text and images, like newsletters.
- **Photo:** For photos or graphics, when you want good quality with faster printing.
- **Photo RPM:** For photos or graphics, when you need highest quality printing.

- 5 Load the right paper for your document. If you loaded special paper, select the correct paper type in the Type list.



- 6 Click **OK**.

- 7 After a moment, printing begins. You see this window showing your print job progress.



Click to cancel printing

Click to pause or resume printing

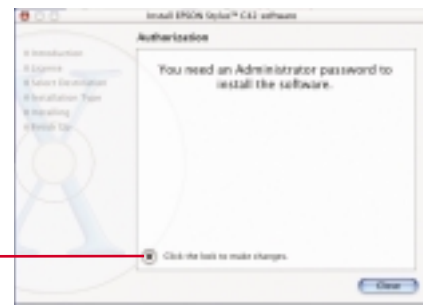
Shows ink levels

For more information on printing, double-click the **ES C42 Manual** icon on your desktop to view the printer manual.

Turn over

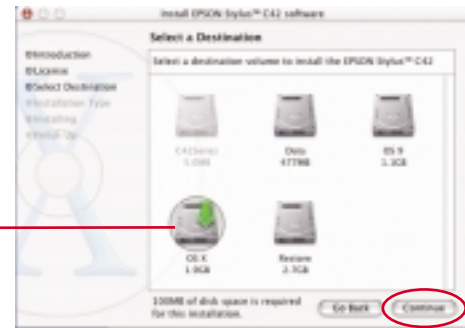
Macintosh OS X

- 1 Make sure your printer is on, then start your Macintosh in OS X. When you see your Macintosh icons, put the EPSON CD-ROM in your drive.
- 2 Double-click the EPSON CD-ROM icon to open its window. Then double-click C42Series.
- 3 If you set up an administrator password when you installed OS X, you see this screen. Click the icon, enter your administrator password, and click **OK**. At the next screen, click **Continue**.



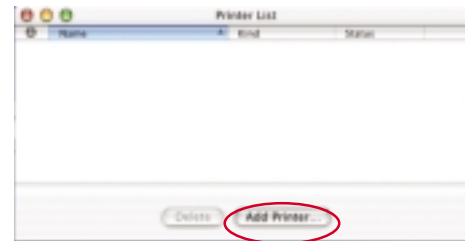
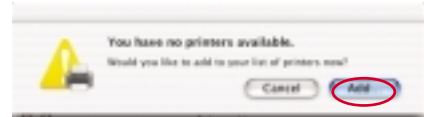
Click this icon

- 4 Read the license agreement and click **Continue**, then click **Agree**.
- 5 Select the OS X drive where you want to install your printer software, then click **Continue**.

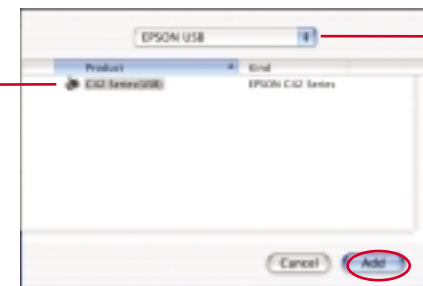


Select the OS X drive

- 6 Click **Install** on the Easy Install screen, and follow the on-screen instructions to install the printer software and restart your Macintosh.
- 7 Double-click the **Applications** folder on your hard drive.
- 8 Double-click the **Utilities** folder, then double-click **Print Center**.
- 9 If you see the **C42 Series(USB)** icon in the printer list, close Print Center and go to step 14. If you don't see your printer icon, continue with step 10.
- 10 If you see this screen, click **Add**.
- 11 When you see this screen, click **Add Printer**.



- 12 Select **EPSON USB** in the list at the top of the screen. When you see the **C42 Series(USB)** icon, select it and click **Add**.



Select your printer

Select EPSON USB

- 13 Your printer appears in the Printer List. Close Print Center.
- 14 Double-click the **Manual** folder in the EPSON CD-ROM window and drag the **ES C42 Manual** icon to your desktop.

Now you're ready to print! For instructions, double-click the **ES C42 Manual** icon to view the printer manual.

NOTE: To print from Macintosh Classic applications as well as OS X applications, start your Macintosh in OS 9 and follow the instructions in the next column.

Macintosh OS 8.5.1 to 9.x

- 1 Make sure your printer is on, then turn on your Macintosh. When you see your Macintosh icons, put the EPSON CD-ROM in your drive.
- 2 Double-click EPSON in your CD-ROM window. (You may have to double-click EPSON on your desktop to open the window.)
- 3 Read the license agreement and click **Agree**.
- 4 At the Main Menu, click **Install Printer Driver**.
- 5 Click **Install** on the installer screen. Follow the on-screen instructions to install and restart your Macintosh.
- 6 When you see the EPSON Registration screen, follow the instructions to register your printer.
- 7 On the Main Menu, click **View Printer Manual**. (You may have to double-click EPSON to open the Main Menu.)
- 8 Click **Install Printer Manual** on the next screen to copy the manual to your Macintosh.

Click here



- 9 When you're done, click **Back** to return to the Main Menu, then **Exit** to close it.
 - 10 Open the Chooser, click the **C42 Series** icon, click your USB port, and turn on background printing.
 - 11 Close the Chooser.
- You're ready to start printing! For instructions, double-click the **ES C42 Manual** icon on your desktop to view the printer manual.

*NOTE: You need Adobe Acrobat Reader to view your manual. If you don't have it, click **Install Adobe Acrobat Reader** and follow the on-screen instructions.*

Replacing Ink Cartridges



Black cartridge: T036120



Color cartridge: T037020

CAUTION: To ensure good results, use genuine EPSON ink cartridges and don't refill them. Other products may cause damage to your printer not covered by EPSON's warranty.

Low ink The red error light flashes and a status screen appears telling you which cartridge is low.

Empty cartridge The error light stays lit and the empty cartridge is indicated on the screen; you must replace it to continue printing.

- 1 Open the printer cover and press the maintenance button for 10 seconds. The print head moves to the cartridge's replacement position. (If both cartridges need replacement, the print head moves to the black cartridge position first.)

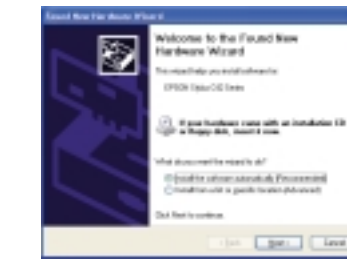
- 2 Lift the ink cartridge clamp and remove the cartridge.

continue.....

- 3 Unpack the new ink cartridge and remove the yellow tape.
- 4 Insert the new cartridge.
- 5 Press down on the cartridge clamp until it clicks shut.
- 6 Press the maintenance button. (If the other cartridge needs replacement, the print head moves into loading position. Repeat steps 2 through 6.) Then close the printer cover.
- 7 Wait until ink charging is finished (the green power light stops flashing and the error light goes out).

Problems?

You don't see the Found New Hardware screen when you install the Windows printer software.



Make sure your printer is on and the USB cable is securely connected to your printer's USB port.

If you still don't see the screen, pull the cable out of the computer's USB port and reinsert it.

The red error light is on (nothing prints).

If paper is out, load more paper and press the maintenance button to resume printing.

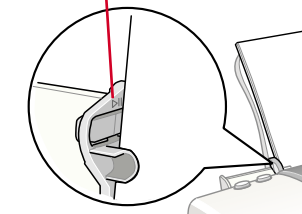
If paper is jammed, press the maintenance button to eject it.

If the paper doesn't eject, turn off the printer, open the cover, and pull the paper out from the front. Then reload paper, turn the printer on, and press the maintenance button.

Paper jams frequently.

Use new, smooth, high-quality paper.

Don't load paper above this mark



Don't load paper above the arrow mark inside the left edge guide.

Place the paper against the right edge behind the tabs. Slide the left edge guide against it, but not too tightly.

For more solutions to problems, see your electronic printer manual.

Getting Help

EPSON provides technical assistance 24 hours a day through the electronic support services and automated telephone services listed below:

World Wide Web

From the Internet, you can reach EPSON Support at <http://support.epson.com>. Here you can download drivers and other files, look at product documentation and troubleshooting information, and receive technical advice through e-mail.

Automated Telephone Services

A variety of automated help services are available 24 hours a day, 7 days a week. To use these services, you must have a touch tone telephone and call (800) 922-8911. Your EPSON SoundAdviceSM Express Code is 70370. Use this code to quickly select the EPSON Stylus C42 Series in SoundAdvice.

Viewing Your Manual

If you installed the manual to your computer, just double-click the **ES C42 Manual** icon on your desktop.

If you did not install your manual, then follow the steps below for your system:

Windows

- 1 Put the EPSON CD-ROM in your drive. You see the Options Menu. Go to step 3.
- If you don't see the Options menu, continue with step 2.
- 2 **Windows XP:** Click **Start**, then click **My computer**. Double-click EPSON. You see the Options Menu.
- Other Windows systems:** Double-click **My computer** on your desktop, then double-click EPSON. You see the Options Menu.
- 3 Click **View Printer Manual**. When you see the Printer Manual menu, click **View Printer Manual** again.

Macintosh OS 8.5.1 to 9.x

- 1 Put the EPSON CD-ROM in your drive.
- 2 Double-click EPSON in your CD-ROM window. (You may have to double-click EPSON on your desktop to open the window.)
- 3 Click **View Printer Manual**. When you see the Printer Manual menu, click **View Printer Manual** again.

Macintosh OS X

- 1 Put the EPSON CD-ROM in your drive.
- 2 If necessary, double-click the EPSON CD-ROM icon to open its window.
- 3 Double-click the **Manual** folder, then double-click the **ES C42 Manual** icon.

Buying Ink and Paper

Use genuine EPSON inks and paper to get the best results from your EPSON printer! You can purchase ink cartridges, paper, and accessories from your local retailer or from the EPSON StoreSM at (800) 873-7766, or visit www.epsonstore.com (U.S. sales only). In Canada, please call (800) 463-7766 for dealer referral.

Here are three EPSON papers designed to work with your printer:



Premium Bright White Paper delivers crisp black text and vivid, colorful images. It's perfect for everyday printing.

Letter S041586



Photo Quality Ink Jet Paper is a bright white paper with a smooth matte finish. It's perfect for newsletters, proposals, and presentations.

Letter S041062



Glossy Photo Paper is a heavier weight glossy paper that delivers photo lab quality. It's perfect for color photo keepsakes.

Letter S041141
4 x 6 inches S041134

EPSON and EPSON Stylus are registered trademarks of SEIKO EPSON CORPORATION. SoundAdvice and EPSON Store are service marks of Epson America, Inc.

General Notice: Other product names are for identification purposes only and may be trademarks of their respective owners. EPSON disclaims any and all rights in those marks.

Copyright © 2002 by Epson America, Inc. Printed on recycled paper. 6/02
Printed in XXX