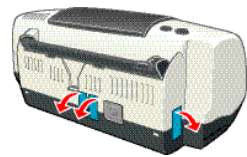


# Start Here

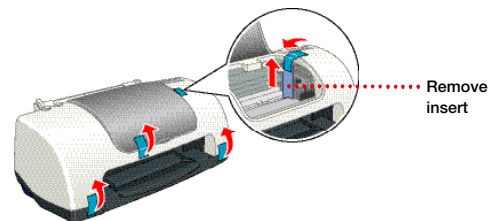
## EPSON Stylus® C44 Series

### 1 Unpack

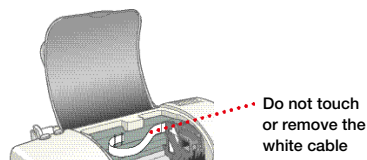
1 Remove the tape and packing material from the printer.



2 Open the cover. Then peel off the tape and remove the insert. Do not touch or remove the white cable inside the printer.

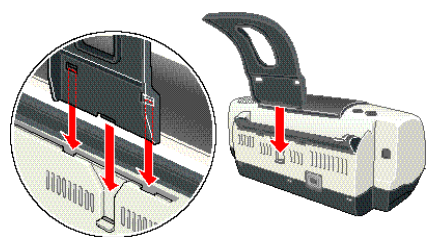


Remove insert



Do not touch or remove the white cable

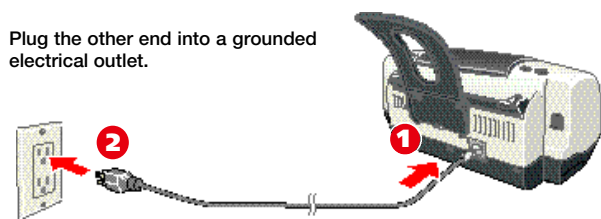
3 Insert the paper support into the three slots on the back of the printer.



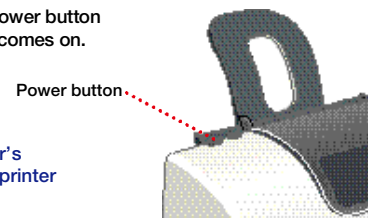
### 2 Power On

1 Find the power cord that came in the box and connect one end to the printer.

2 Plug the other end into a grounded electrical outlet.



3 Press down firmly on the power button until the green power light comes on.

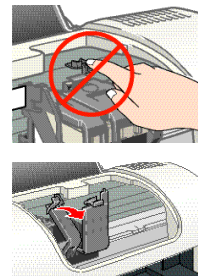


Caution: Use only the printer's power button to turn the printer on or off.

### 3 Load Ink

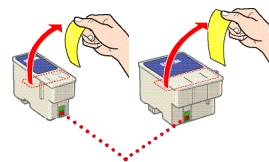
1 Open the printer cover.

Caution: Don't touch the sensor behind the ink cartridge holders.



2 Lift up the ink cartridge clamps.

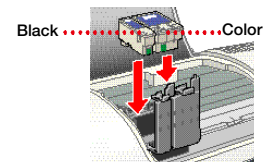
3 Unpack the ink cartridges that came with your printer and remove the yellow tape only.



Don't touch the green part

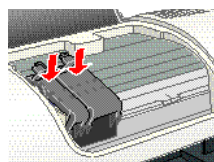
4 Insert both cartridges.

Caution: You must install both cartridges or the printer won't work.

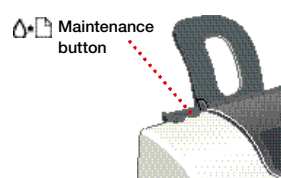


Black Color

5 Press down on the cartridge clamps until they click shut.



6 Press the maintenance button. The green power light flashes and you hear the printer charge its ink.



Maintenance button

7 Close the printer cover. When the green power light stops flashing, charging is done.

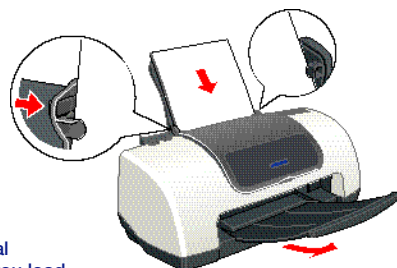
Caution: Never turn off the printer while the green power light is flashing.

### 4 Load Paper

1 Set some paper behind the tab on the right edge guide. Don't force it in.

2 Press in the locking tab on the left edge guide and slide it against the paper.

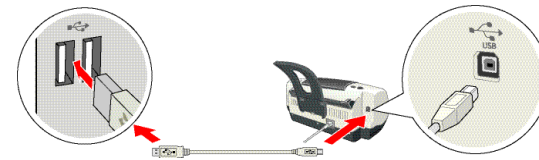
3 Pull out the output tray.



Note: If you're using special EPSON paper, make sure you load the brighter, whiter side face up.

### 5 Attach the Cable

1 Connect the square end of the USB cable to your printer's USB port.



2 Connect the flat end of the cable to any available USB port on your computer.

### 6 Install the Software

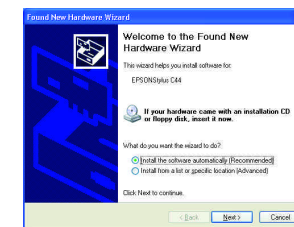
Follow the steps below to install the printer software on Windows® XP. To install software on Windows 98, Me, or 2000, see the booklet that came with your printer, *Installing Software for Microsoft® Windows 98, Windows Me, and Windows 2000*.

For instructions on installing your Macintosh® software, see the back of this sheet.

#### Windows XP

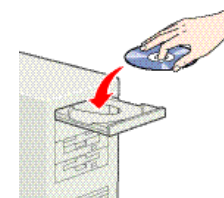
1 Turn on the computer. (Make sure your printer is still on.)

2 Wait for this screen to appear. DON'T CLICK ANY BUTTONS ON THE SCREEN.



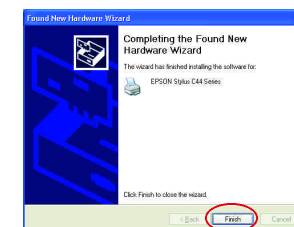
Note: If you don't see the Found New Hardware screen, see "Problems?" on the back of this sheet.

3 Put the EPSON CD-ROM in your CD-ROM or DVD drive.



Wait while the files are copied to your computer.

4 Click **Finish** when you see this screen.



5 Install your optional software, as described below.

#### Installing Optional Software for Windows XP

1 After a moment, you see the license agreement. Read the agreement and click **Agree**.

2 You see this screen. Make sure you have paper in the printer, then click **Print a Test Page** to check that your printer is set up correctly.



Click here

continue

3 Optionally, click **Install Photo Software**. Select the software you want to install and follow the on-screen instructions.

Note: If you see a message about installing QuickTime®, click **Yes** and follow the on-screen instructions. At the end of Film Factory™ installation, deselect the option to launch the program, if necessary.

4 When you return to the Options Menu, click **Install Printer Manual** to copy the **ES C44 Manual** icon to your desktop. (Then whenever you want to view the manual, just double-click the icon.)

5 When you're done, click **Exit** to close the Options Menu.

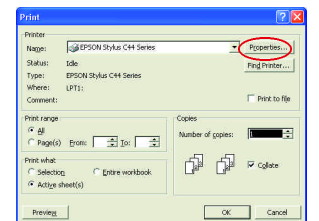
6 When you see the EPSON Product Registration screen, register your printer as instructed. Then remove your CD-ROM.

You're ready to start printing! Follow the instructions below.

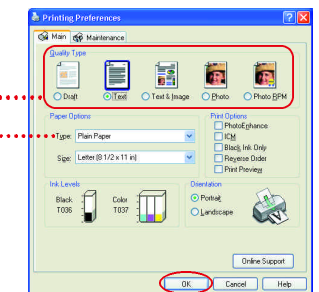
#### Printing from Windows

1 Open a letter-size document in a program.

2 Click the **File** menu and select **Print**. You see a screen like this:



3 Click **Properties** or **Preferences**. You see this screen:

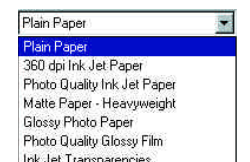


Type of document  
Paper type

4 Select the type of document you're printing:

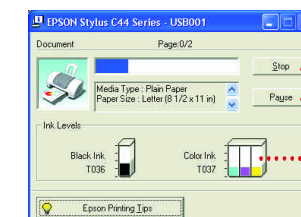
- **Draft**: For rough drafts on plain paper. Saves ink.
- **Text**: For text-only documents, like letters or reports.
- **Text & Image**: For documents that have both text and images, like newsletters.
- **Photo**: For photos or graphics, when you want good quality with faster printing.
- **Photo RPM**: For photos or graphics, when you need highest quality printing.

5 Load the right paper for your document. If you loaded special paper, select the correct paper type in the **Type** list.



6 Click **OK**. Then click **Print**.

7 After a moment, printing begins. You see this window showing your print job progress.




Click to cancel printing

Click to pause or resume printing

Shows ink levels

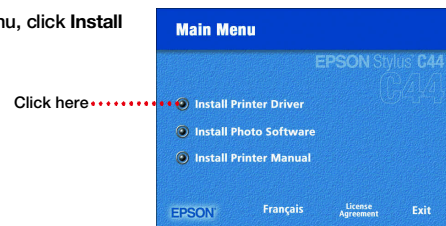
For more information on printing, double-click the **ES C44 Manual** icon on your desktop to view the printer manual.

## Macintosh

- 1 Make sure your printer is on, then turn on your Macintosh. When you see your Macintosh icons, put the EPSON CD-ROM in your CD-ROM or DVD drive.
- 2 Select the EPSON CD-ROM icon on your desktop, if necessary. Then double-click  EPSONInstaller in your CD-ROM window.

- 3 Read the license agreement and click Agree.

- 4 At the Main Menu, click Install Printer Driver.



- 5 Follow the on-screen instructions to install your printer software and restart your Macintosh. (You may need to enter your administrator password.)

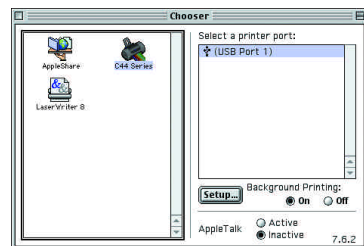
- 6 After your Macintosh restarts, register your printer with EPSON as instructed (except with Mac OS X).

- 7 To complete installation, follow the steps below for your Mac OS.

### Mac OS 8.5.1 to 9.x

Open the Chooser in the Apple® menu, then select these options:

- C44 Series
- Your USB port
- Background printing (on or off)



Then close the Chooser and install your optional programs, as described in the next column.

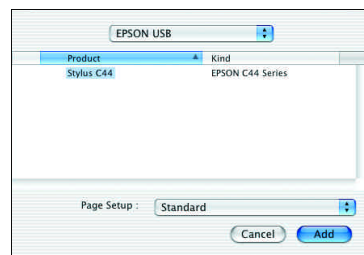
### Mac OS X 10.1.x and above

Open the Applications folder, then open the Utilities folder and select Print Center.

If Stylus C44 already appears in the printer list, close Print Center and install your optional programs, as described in the next column.

If Stylus C44 doesn't appear, make sure your printer is connected and turned on. Then click Add or Add Printer, and select these options:


- EPSON USB at the top of the screen
- Stylus C44 below

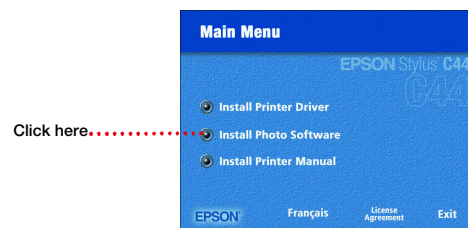


Click Add, then close Print Center and install your optional programs, as described in the next column.

**Note:** You can also add a driver supplying the Minimize Margins feature; see your on-screen printer manual for details.

## Installing Optional Software for Macintosh

- 1 Select  EPSON Installer in your EPSON CD-ROM window.
- 2 Click Install Photo Software. Select the software you want to install and follow the on-screen instructions.



- 3 When you return to the Main Menu, click Install Printer Manual to copy the ES C44 Manual icon to your desktop. (Then whenever you want to view the manual, just double-click the icon.)

- 4 When you're done, click Exit to close the Main Menu.

- 5 Mac OS X only: Register your printer with EPSON as instructed.

- 6 Remove the CD-ROM.

- 7 Mac OS X only: Restart your Macintosh in OS 9, then repeat the steps in the "Macintosh" section to install the Mac OS 9 printer driver and optional software for your Macintosh Classic applications.

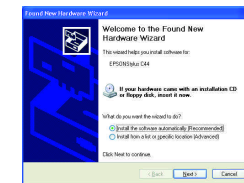
You're ready to start printing! For instructions, double-click the ES C44 Manual icon on your desktop to view the printer manual.

## Problems?

**You don't see the Found New Hardware screen when you install the Windows printer software.**

Make sure your printer is on and the USB cable is securely connected to your printer's USB port.

If you still don't see the screen, pull the USB cable out of the computer's USB port and reinsert it.



**The red error light is on (nothing prints).**

If paper is out, load more paper and press the maintenance button to resume printing.

If paper is jammed, press the maintenance button to eject it.

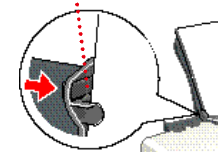
If the paper doesn't eject, turn off the printer, open the cover, and pull the paper out from the front. Then reload paper, turn the printer on, and press the maintenance button.

**Paper jams frequently.**

Use new, smooth, high-quality paper.

Don't load paper above this mark

Don't load paper above the arrow mark inside the left edge guide.



Place the paper against the right edge behind the tabs. Slide the left edge guide against it, but not too tightly.

For more solutions to problems, see your on-screen printer manual.

## Replacing Ink Cartridges



Black cartridge: T036120



Color cartridge: T037020

**Caution:** To ensure good results, use genuine EPSON ink cartridges and don't refill them. Other products may cause damage to your printer not covered by EPSON's warranty.

**Low ink** The red error light flashes and a status screen appears telling you which cartridge is low.

**Empty cartridge** The error light stays lit and the empty cartridge is indicated on the screen; you must replace it to continue printing.

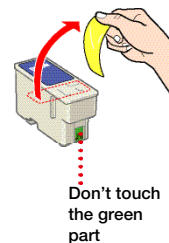
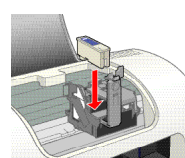
- 1 Open the printer cover and press the maintenance button for 6 seconds. The print head moves to the cartridge's replacement position. (If both cartridges need replacement, the print head moves to the black cartridge position first.)

- 2 Lift the ink cartridge clamp and remove the cartridge.

- 3 Unpack the new ink cartridge and remove the yellow tape only.

- 4 Insert the new cartridge.

- 5 Press down on the cartridge clamp until it clicks shut.



- 6 Press the maintenance button. (If the other cartridge needs replacement, the print head moves into loading position. Repeat steps 2 through 6.) Then close the printer cover.

- 7 Wait until ink charging is finished (the green power light stops flashing and the error light goes out).

## Getting Help

EPSON provides technical assistance 24 hours a day through the electronic support services and automated telephone services listed below:

### World Wide Web

From the Internet, you can reach EPSON Support at <http://support.epson.com>. Here you can download drivers and other files, look at product documentation and troubleshooting information, and receive technical advice through e-mail.

### Automated Telephone Services

A variety of automated help services are available 24 hours a day, 7 days a week. To use these services, you must have a touch tone telephone and call (800) 922-8911. Your EPSON SoundAdvice Express Code is 70440. Use this code to quickly select the EPSON Stylus C44 Series in SoundAdvice.

## Viewing Your Manual

To view your printer manual, just double-click the ES C44 Manual icon on your desktop.

If you did not install your manual, follow the steps below to install it:

### Windows

- 1 Put the EPSON CD-ROM in your drive. You see the Options Menu.

- 2 Click Install Printer Manual.

### Macintosh

- 1 Put the EPSON CD-ROM in your drive.

- 2 Select the EPSON CD-ROM icon on your desktop, if necessary. Then double-click  EPSON Installer in your CD-ROM window. You see the Main Menu.

- 3 Click Install Printer Manual.

## Buying Ink and Paper

Use genuine EPSON inks and paper to get the best results from your EPSON printer! You can purchase ink cartridges, paper, and accessories from your local retailer or from the EPSON Store<sup>SM</sup> at (800) 873-7766, or visit [www.epsonstore.com](http://www.epsonstore.com) (U.S. sales only). In Canada, please call (800) 463-7766 for dealer referral.

Here are three EPSON papers designed to work with your printer:



**Premium Bright White Paper** delivers crisp black text and vivid, colorful images. It's perfect for everyday printing.



**Photo Quality Ink Jet Paper** is a bright white paper with a smooth matte finish. It's perfect for newsletters, proposals, and presentations.



**Glossy Photo Paper** is a heavier weight glossy paper that delivers photo lab quality. It's perfect for color photo keepsakes.

EPSON and EPSON Stylus are registered trademarks of SEIKO EPSON CORPORATION. SoundAdvice and EPSON Store are service marks of Epson America, Inc.

General Notice: Other product names are for identification purposes only and may be trademarks of their respective owners. EPSON disclaims any and all rights in those marks.

Copyright © 2003 by Epson America, Inc. Printed on recycled paper. 4/03

Printed in XXX

CPD-15884R1