

EPSON Stylus® COLOR 740

USB Software Installation Guide (Windows® 98/iMac™)

USB Setup Guide (iMac)

This guide includes USB setup instructions for your iMac computer, as well as software installation instructions for both iMac and Windows 98.

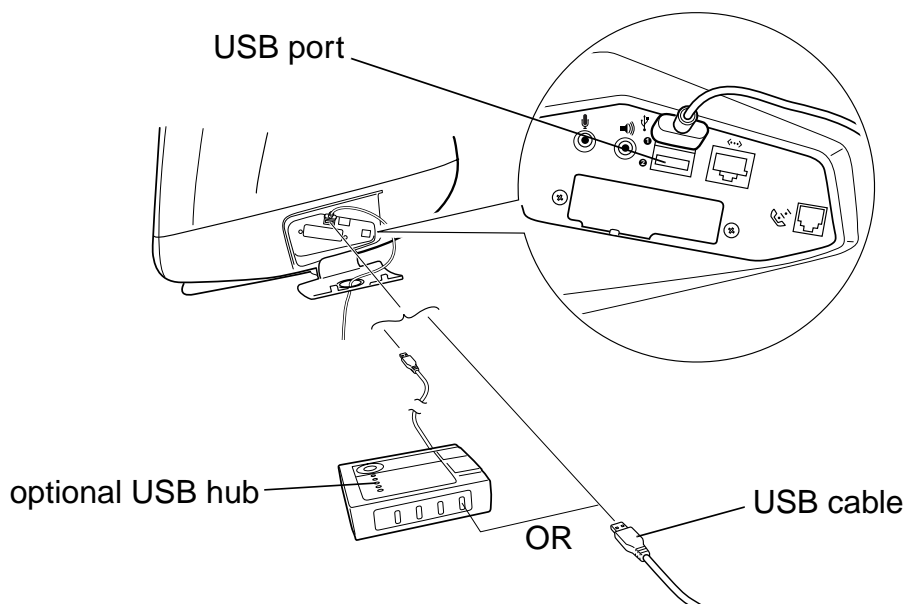
If you have an iMac computer, begin with “Connecting the Printer to an iMac Computer”.

If you have a Windows 98 system, begin with the instructions in the *Start Here* card for connecting the printer to your USB port. Then continue with “Installing the USB Printer Software (Windows 98)” on page 4 of this booklet.


Connecting the Printer to an iMac Computer

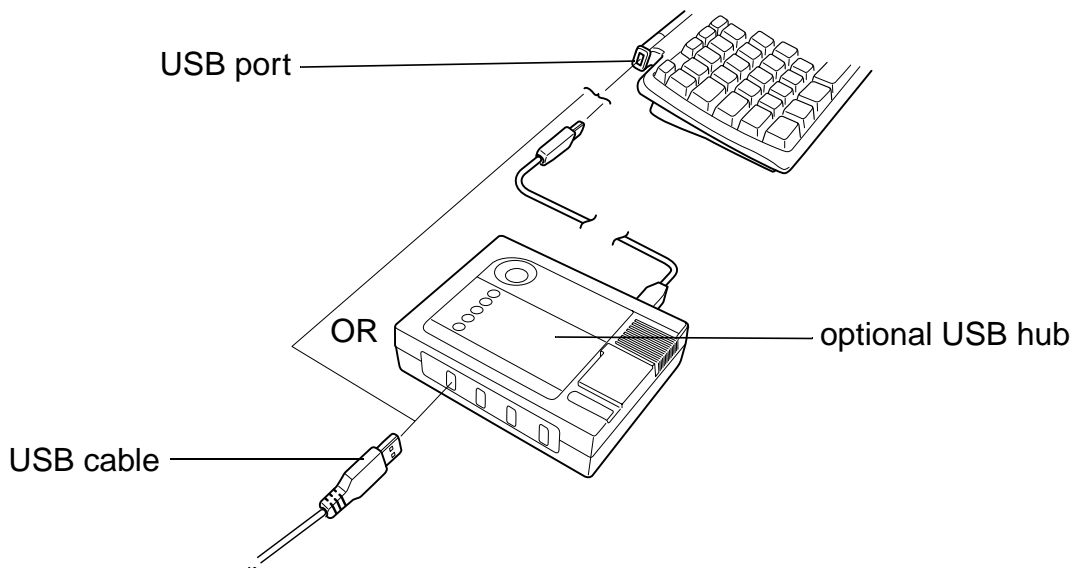
You can connect your printer directly to a port on the iMac or to a USB hub connected to a port on the iMac. If you have any printing problems when the printer is connected via a USB hub, try connecting the printer directly to the iMac instead.

1. Turn off the printer and computer.
2. To connect the USB cable to a USB port on the side of the iMac, first open the port door. Hold the cable so the ⚡ icon faces up and connect it to an available USB port.



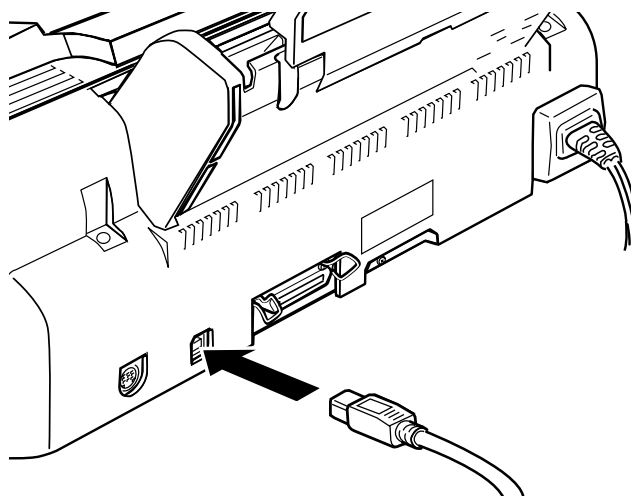
If you're using a USB hub, plug it into the USB port on your iMac, then connect one end of the USB cable into an available port on the hub. If you have more than one hub, connect the cable to the first hub.

To connect the cable to one of the USB ports on the iMac keyboard, hold the cable's USB connector so the  icon faces away from you and connect it to the USB port.



If you're using a USB hub, plug it into a USB port on the iMac keyboard, then connect the cable to an available port on the hub. If you have more than one hub, connect the cable to the first hub.

3. Connect the other end of the USB cable to your printer's USB connector.



4. Continue with the next section to install the USB Printer Device software and EPSON Stylus COLOR 740 printer driver software.

Installing the USB Printer Software (iMac)

If your iMac is running OS 8.1, you must download and install the iMac Update 1.0 from Apple at <http://swupdates.info.apple.com> before you install the EPSON USB software. Contact Apple Computer if you have problems installing this update.

If your iMac is running OS 8.5, you **do not** need to download and install the iMac Update 1.0. Your operating system already includes full support for the EPSON USB software.

Note:

*To find out which operating system your iMac is running, select **About This Computer** in the Apple menu.*

When you're ready to install the USB printer software, follow these steps:

1. Make sure your printer and computer are connected and turned off.
2. Turn on your computer and wait until you see the icons on your Macintosh desktop.
3. Insert the EPSON CD-ROM in your drive.
4. Double-click the **STYLUS COLOR 740 Installer**, then click **Continue**.
5. Click **Install**, then follow the on-screen instructions to install the printer driver and select a default paper size.
6. After installation is complete, click **Restart** to restart your iMac.
7. Open the Chooser from the Apple menu.
8. Click the **SC 740** icon.
9. Select the **USB Port** icon (if you've connected more than one EPSON Stylus COLOR 740, the port is numbered).
10. Turn on background printing if you want, then close the Chooser.

If you don't see your printer icon in the Chooser, make sure your USB port and printer parallel port connections are secure and your printer is turned on. Check the MacOS Info Center on your iMac desktop for additional information on USB connections.

If the printer doesn't work correctly, uninstall the printer software as described in the *Printer Basics* book. Also uninstall the EPSON USB Printer Device software the same way. Then reinstall the USB device and printer software as described in this guide. If you still have

problems, contact your EPSON dealer or EPSON technical support as described in the *Printer Basics* book.

To install your creative software and electronic manual, continue with “Installing Your Creative and Internet Software and Electronic Manual” on page 6.

Installing the USB Printer Software (Windows 98)

The USB Printer Device software works best with a Windows 98 system that has not been upgraded from Windows 95. Follow the steps below to install the USB Printer Device software and your EPSON Stylus COLOR 740 printer driver.

1. Make sure your printer and computer are connected and turned off.
2. Turn on your computer and wait until you see the Windows 98 desktop icons.
3. Turn on your printer. You see the Add New Hardware Wizard screen:



Windows 98 first detects a USB printer and installs a device driver for it

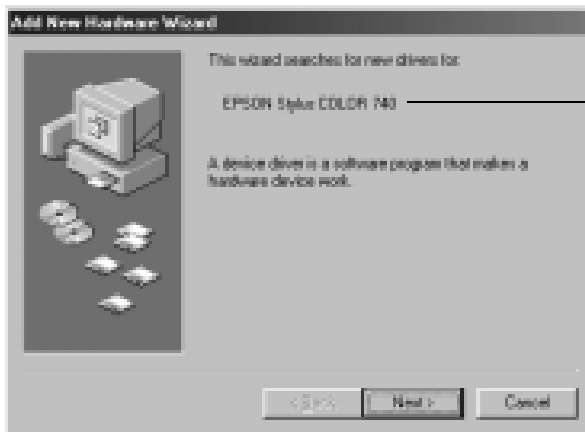
4. Insert the EPSON CD-ROM in your drive.
5. Click **Next**. At the next screen, select **Search for the best driver for your device** and click **Next**.

6. Select **Specify a location** and type **D:\DRIVERS\WIN98** (where **D** is your CD-ROM drive letter). Then click **Next**.



Click **Specify a location**, type the path, and click **Next**

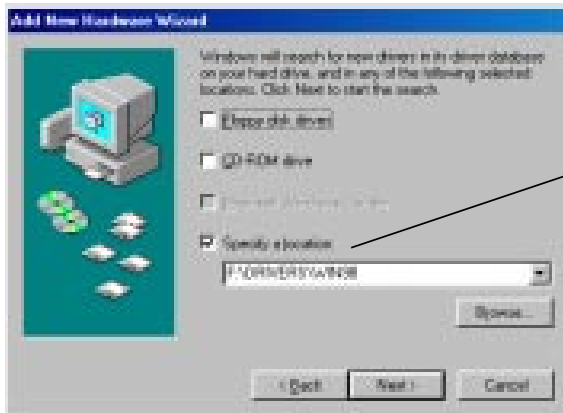
7. The Add New Hardware Wizard now displays **EPSON USB Printer**; click **Next**. The installer copies the USB printer files to your system. At the final screen, click **Finish**.
8. Windows 98 detects your printer and displays the following screen. Click **Next** to install your printer driver.



You see your printer model name here

9. At the next screen, select **Search for the best driver for your device** and click **Next**.

10. Select **Specify a location** and, if necessary, type **D:\DRIVERS\WIN98** (where **D** is your CD-ROM drive letter). Then click **Next**.



Click **Specify a location**, type the path, and click **Next**

11. Follow the on-screen instructions to install your printer driver and Status Monitor 2, then restart your system.

To verify that your USB software installed properly, check the Device Manager. Click **Start**, point to **Settings**, and click **Control Panel**. Then double-click **System** and click the **Device Manager** tab. You should see the device **EPSON USB Printer Devices** listed. Click the **+** next to the device; you should see **EPSON USB Printer (EPUSB1:)** listed too.

If the printer doesn't work correctly, uninstall the printer software as described in the *Printer Basics* book. Also uninstall the EPSON USB Printer Device software the same way. Then reinstall the USB device and printer software as described in this guide. If you still have problems, contact your EPSON dealer or EPSON technical support as described in the *Printer Basics* book.

To install your creative and Internet software and view the electronic manual, continue with the procedure below.

Installing Your Creative and Internet Software and Electronic Manual

Once you've restarted your system, you can install the rest of the software on your EPSON CD-ROM from the Start menu.

1. Make sure the EPSON CD-ROM is in your drive.
2. For Windows, click **Start**, select **Run**, and type **D:\Epson** (where **D** is your CD-ROM drive letter). Then click **OK**.

On a Macintosh, double-click the **EPSON** icon in the EPSON CD-ROM folder.

3. After a moment, you see the EPSON Stylus COLOR 740 Installer Main Menu:



Click **License Agreement** to read your software license agreement. Then click **OK** to return to the Main Menu.

4. To install a program or your electronic *EPSON Stylus COLOR 740 Manual*, just click the button for your selection on the Main Menu. (If necessary, close any open windows covering the Main Menu.)

Note:

To view your electronic manual, you must install Adobe Acrobat® Reader and QuickTime® MoviePlayer™ if you don't already have them on your system. With Windows, the installer automatically installs the programs for you. On a Macintosh, select the options to install the programs and follow the on-screen instructions. Once you've viewed the manual, you can copy it to your hard disk using the Copy Printer Manual to Hard Drive option.

5. Some of the software you install may restart your system. If you restart but want to install more software, do the following:

Windows: Click **Start**, point to **Programs**, **Epson**, and click **EPSON Stylus COLOR 740 Installer**.

Macintosh: Double-click the **EPSON** icon in the CD-ROM folder.

If you're running Windows, you can use the Guided Printing Exercise for a quick lesson in printing (not available with Macintosh). See "Print an image" on your *Start Here* card to get started.

EPSON and EPSON Stylus are registered trademarks of SEIKO EPSON CORPORATION.

General Notice: Other product names used herein are for identification purposes only and may be trademarks of their respective owners.

EPSON disclaims any and all rights in those marks.

Copyright © 1998 by Epson America, Inc.

Printed on recycled paper with at least 10% post-consumer content.

10/98

CPD-7634R1