



# AXIS® I440 Print Server

## For EPSON® Printers: Product Update

### Important Information for Windows

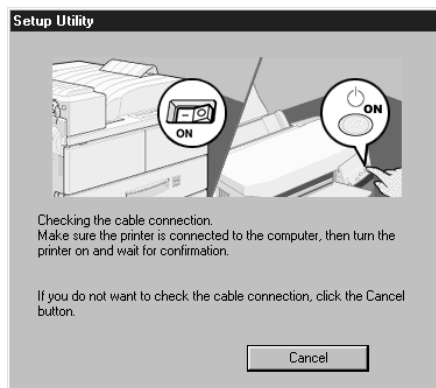
If you are using Windows® 95, Windows 98, or Windows NT® 4.0, you need to turn off your EPSON® printer software's monitoring utility (Status Monitor) before you use the printer. The EPSON Status Monitor was created for printing locally and cannot monitor your printer over a network. If you don't turn off monitoring, you will see error messages when you try to print.

If you are using the AXIS® 1440 Print Server with the EPSON Stylus® COLOR 760, EPSON Stylus COLOR 860, EPSON Stylus COLOR 1160, EPSON Stylus Photo 870, or EPSON Stylus Photo 1270, follow the steps under, "Disabling Monitoring for EPSON Status Monitor 3" (page 2). For all other printers, follow the steps in the section below.

#### Note:

- AXIS includes software for monitoring the printer over the network. For details, see your *AXIS 1440 Print Server User's Manual*.

When you are installing drivers for the EPSON Stylus Photo 870 or the EPSON Stylus Photo 1270, the Printer Utility tries to automatically detect your printer port. You may see the following screen:



If you see this screen, click **Cancel** and configure your port for the AXIS 1440 manually, as described in the *AXIS 1440 Print Server Installation Guide*.



## Disabling Monitoring for EPSON Status Monitor 2

Follow the steps below to disable monitoring on any Windows 95, Windows 98, or Windows NT 4.0 systems that will use one of the following printers: EPSON Stylus COLOR 740, EPSON Stylus COLOR 740i, EPSON Stylus COLOR 850, EPSON Stylus Photo 700, EPSON Stylus Photo 750, EPSON Stylus Photo 1200, EPSON Stylus Photo EX.

1. Click **Start**, point to **Programs**, **EPSON**, then click **EPSON Status Monitor 2**.
2. In the Settings menu, select **Background Monitoring**, then click **Stop monitoring now**. (If you can't click Stop monitoring now, monitoring is already disabled.) Then close the EPSON Status Monitor 2 Window.

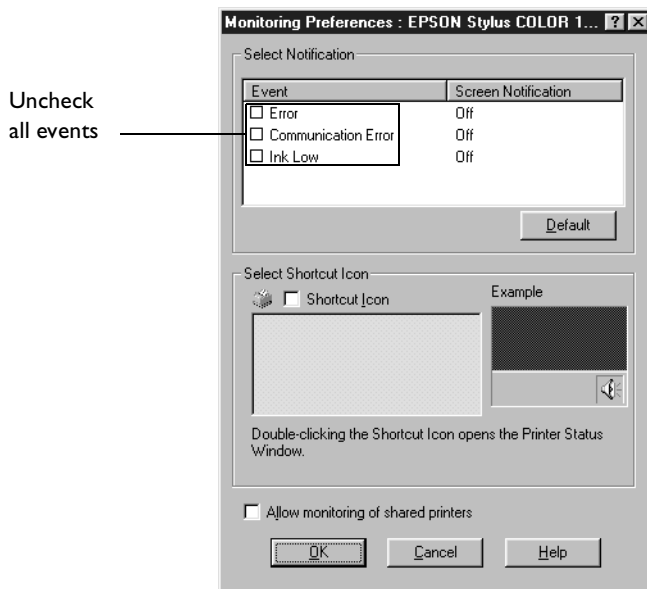
## Disabling Monitoring for EPSON Status Monitor 3

Follow the steps below to disable monitoring on any Windows 95, Windows 98, or Windows NT 4.0 systems that will use one of the following printers: EPSON Stylus COLOR 760, EPSON Stylus COLOR 860, EPSON Stylus COLOR 1160, EPSON Stylus Photo 870, EPSON Stylus Photo 1270.

1. Open the Printers control panel. Click **Start**, point to **Settings**, then click **Printers**.
2. In Windows 95 or Windows 98, right-click the icon for your printer and click **Properties**.  
In Windows NT 4.0, right-click the icon for your printer and click **Document Defaults**.
3. Click the Utility tab and click the **Speed & Progress** button.



4. In the Speed & Progress window, click the **Monitoring Preferences** button. You see the Monitoring Preferences window.



5. Uncheck any selected events in the Select Notification box.

## Important Information for Macintosh

You cannot accurately monitor ink levels when using the AXIS 1440 Print Server on your Macintosh network. If you see the ink levels in EPSON Status Monitor, keep in mind that the display is not accurate.



## Supported Printers

The AXIS 1440 Print Server supports the following printers:

EPSON Stylus COLOR 740	EPSON Stylus Photo 700
EPSON Stylus COLOR 740i	EPSON Stylus Photo 750
EPSON Stylus COLOR 760	EPSON Stylus Photo 870
EPSON Stylus COLOR 850	EPSON Stylus Photo 1200
EPSON Stylus COLOR 860	EPSON Stylus Photo 1270
EPSON Stylus COLOR 1160	EPSON Stylus Photo EX

Some of the supported printers have network drivers on the included EPSON Drivers for AXIS 1440 Print Server CD-ROM. For drivers not shown below (Windows 95, Windows 98, Windows NT, and Macintosh® AppleTalk®), use the drivers included with your printer. The table below lists drivers that are included on the AXIS 1440 Print Server CD-ROM. (Follow the steps in the sections below to install printer drivers from the CD-ROM.)

Printer	Operating System
EPSON Stylus COLOR 740	Macintosh
EPSON Stylus COLOR 740i	Macintosh
EPSON Stylus COLOR 760	Windows 95, Windows 98
EPSON Stylus COLOR 860	Windows 95, Windows 98
EPSON Stylus COLOR 1160	Windows 95, Windows 98
EPSON Stylus Photo 700	Macintosh
EPSON Stylus Photo 750	Macintosh
EPSON Stylus Photo 1200	Macintosh
EPSON Stylus Photo EX	Macintosh




# Installing Printer Drivers

Follow the steps in the appropriate section to install your printer driver from the EPSON Drivers for AXIS 1440 Print Server CD-ROM. If you need to install drivers that are not listed in the table above, see the documentation that came with your printer for instructions.

## Windows 95/Windows 98

Close any open applications, then follow these steps to install your driver:

1. Insert the EPSON Drivers for AXIS 1440 Print Server CD-ROM in your drive. You see the EPSON Installation Program screen. If the screen does not appear, double-click **My Computer** and then double-click the **Epson** CD-ROM icon to start the EPSON Installation Program.
2. Highlight the driver for your printer and click the right arrow button  .
3. Click **OK** to install your printer software.
4. Click **OK** when the software has finished installing. Then restart your computer.

After you complete the installation, see “Disabling Monitoring for EPSON Status Monitor 3” (page 2) to disable the printer software’s local printer monitoring.

### Note:

AXIS includes software for monitoring the printer over the network. See your *AXIS 1440 Print Server User’s Manual* for details.

## Macintosh

Close any open applications, then follow these steps to install your driver:

1. Insert the EPSON Drivers for AXIS 1440 Print Server CD-ROM in your drive. The window opens and you see icons for the available printers. (If it doesn’t open automatically, double-click the CD-ROM icon.)
2. Double-click the installer icon for your printer. (Use the EPSON Stylus COLOR 740 Installer icon for the EPSON Stylus COLOR 740i printer.)
3. Read the message and click **Continue**.
4. Click **Install**. Then read the message and click **Continue**. The driver is installed on your Macintosh.



5. Select a paper size and click **OK**.
6. Click **Restart** to restart your Macintosh.

**Note:**

You cannot accurately monitor ink levels when using the AXIS 1440 Print Server on your Macintosh network.

AXIS 1440 Product Update

Part No. 17436

Copyright © Axis Communications AB, 2000

Revision 1.1

Dated: March 2000