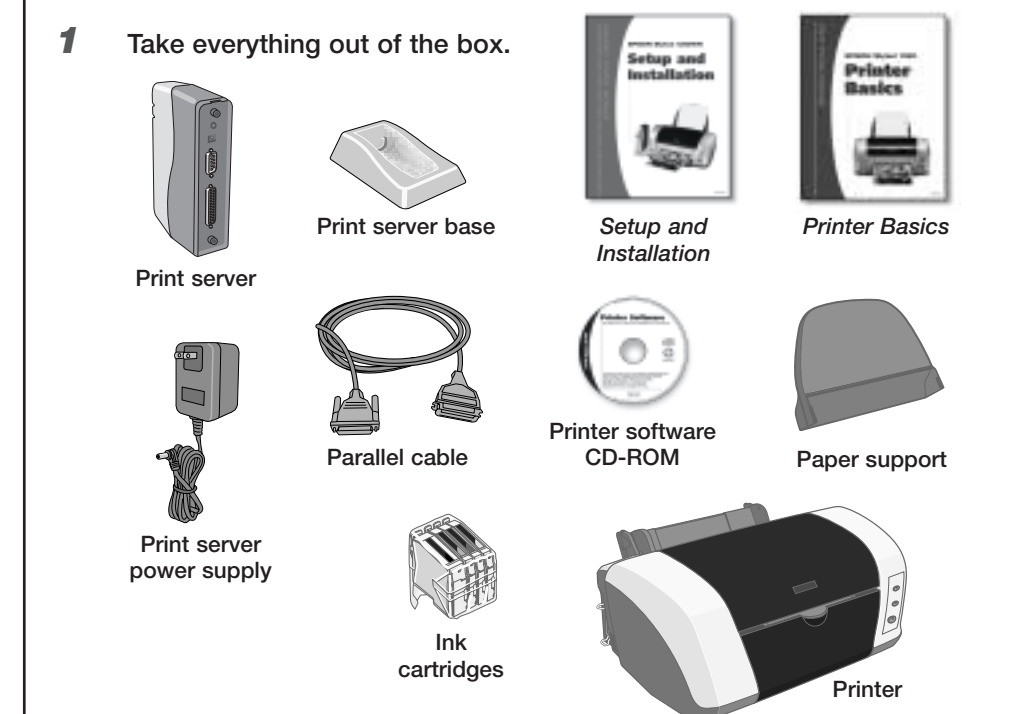


# Start Here

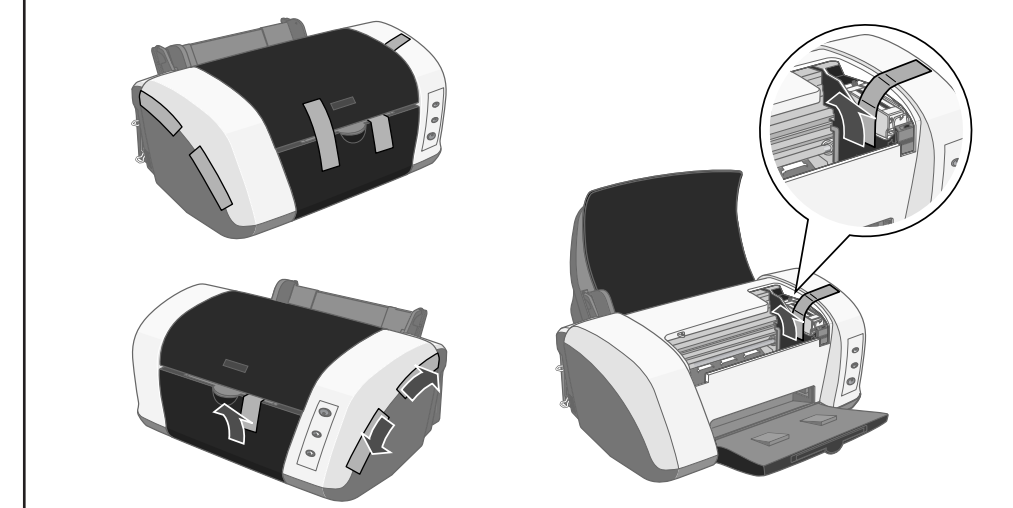
## EPSON Stylus® C82WN

Follow these instructions if you're an advanced user and your network has a wireless access point or AirPort™ Base Station. This includes wired networks that have wireless access points. For more detailed instructions, see your *Setup and Installation* book.

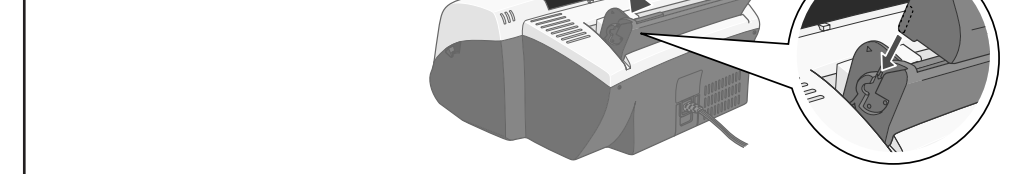
### 1 Unpack and Set Up the Printer



2 Remove all the tape and packing material inside and around the printer. The tape may be in different places on your printer, so check carefully.



3 Slide the paper support into the grooves as shown. It should fit securely.



4 Plug in the printer and press the power button until the green light comes on.



5 Lower the output tray and open the cover.

6 Shake the package of ink cartridges 4 or 5 times. Then remove the cartridges from the package.



continue

7 Insert each cartridge into its holder and push it into place.

**Note:** Don't remove the cartridge labels, or ink may leak.

8 Press the ink button and close the printer cover. Wait while the ink charges.

**Caution:** Don't turn off the printer while the green light is flashing, unless the printer hasn't moved or made any noise for more than 5 minutes.

9 Place paper against the right edge of the sheet feeder, then slide the edge guide against the paper.

10 Pull out the output tray extensions.

To check the printer, first turn it off. Then hold down the paper button as you press and release the power button to turn it back on. The test page prints.

If the test page doesn't print, see the "Problem Solving" chapter in *Printer Basics*.

### 2 Install the Software

Follow the appropriate instructions below to install the software if you have a wireless access point or AirPort Base Station. If you don't, see your *Setup and Installation* book.

#### Windows®

1 Make sure the wireless mode for your computer is set to Infrastructure and WEP encryption is disabled. For instructions, see the documentation for your wireless adapter.

2 Insert your printer software CD-ROM.

3 Double-click **Install EPSON Stylus C82WN Printer Driver** and follow the instructions on the screen.



4 When you see this window, click **Stop searching**. Then follow the instructions on the screen to finish installing and register your printer.

**Note:** The **Stop Searching** button may take a minute or two to appear.

5 Double-click **Install EPSON Status Monitor** on the EPSON Installation Program screen and wait while the files are copied.

6 Double-click **Install EPSON Printer Information Center** and follow the on-screen instructions to install the information center.

7 Double-click **Install EpsonNet Wireless Print Server Utilities**.

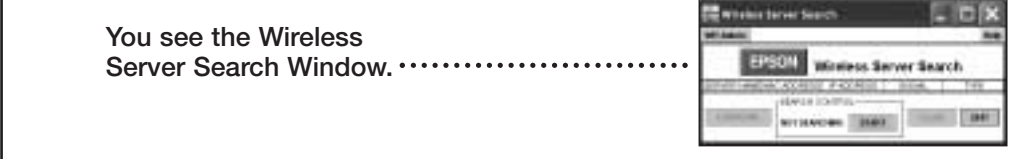
8 If you see this message click **Continue**.

**Caution:** You must install the Java Runtime Environment if it's not already installed on your computer.

9 When you see the license agreement, read it and click **Yes** to continue. Follow the instructions on the screen.

continue

10 When you see this window select **Program Files** and **WP-Admin** and click **Next**.



You see the Wireless Server Search Window.

#### Macintosh®

1 Before you begin, do the following:

- Make sure that AirPort is on and that both AppleTalk® and TCP/IP are enabled.
- Select a working connection to an AirPort Base Station or to an access point.
- Make sure that WEP encryption is disabled on your wireless network. For details, see your AirPort or Macintosh documentation.

2 Insert your printer software CD-ROM.

3 **Mac OS X:** Double-click the **EPSON** CD-ROM icon to open it, then double-click the **Software for OS X** folder. Double-click the **C82Series** icon, and enter your administrator password, if necessary.

**Mac OS 8.6 to 9.x:** Double-click the **Software for OS 8.6-9.x** folder in the EPSON window (you may have to double-click the **EPSON** CD-ROM icon on your desktop to open the window). Double-click the **Printer Driver Installer** folder, then double-click the **Stylus C82WN Installer** icon.

4 Click **Continue**.

5 Follow the instructions on the screen to install the printer driver and restart your Macintosh.

6 If necessary, double-click the **EPSON** CD-ROM icon to open your EPSON window.

7 Do one of the following:

**Mac OS X:** Double-click the **Software for OS X** folder if necessary, then double-click the **Printer Information Center** icon. Follow the on-screen instructions to install the information center.

**Mac OS 8.6 to 9.x:** Double-click the **Software for OS 8.6-9.x** folder, then double-click the **Printer Information Center** folder. Double-click the **Printer Information Center** icon and follow the on-screen instructions to install the information center.

8 Do one of the following:

**Mac OS X:** Double-click the **Wireless Utility Installer** icon.

**Mac OS 8.6 to 9.x:** Double-click the **Install Wireless Utility** folder, then double-click the **Wireless Utility Installer** icon.

You see the print server install window:

9 Click **Next**.

10 Read the license agreement. Click **Next** to accept the agreement and continue.

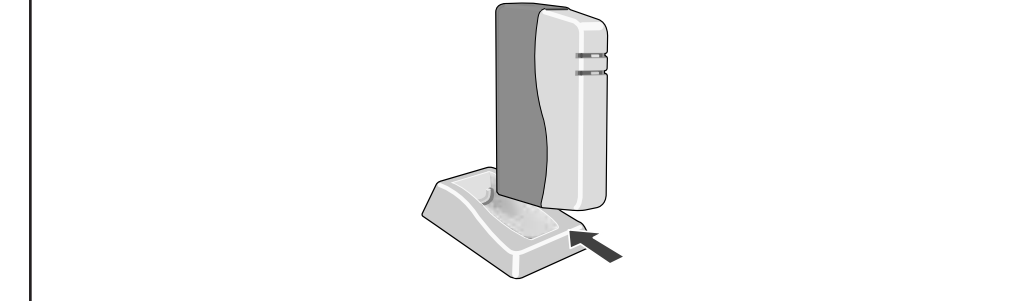
11 Follow the instructions on the screen to install WP-Admin. At the last screen, click **Done**.

You see the Wireless Server Search window.

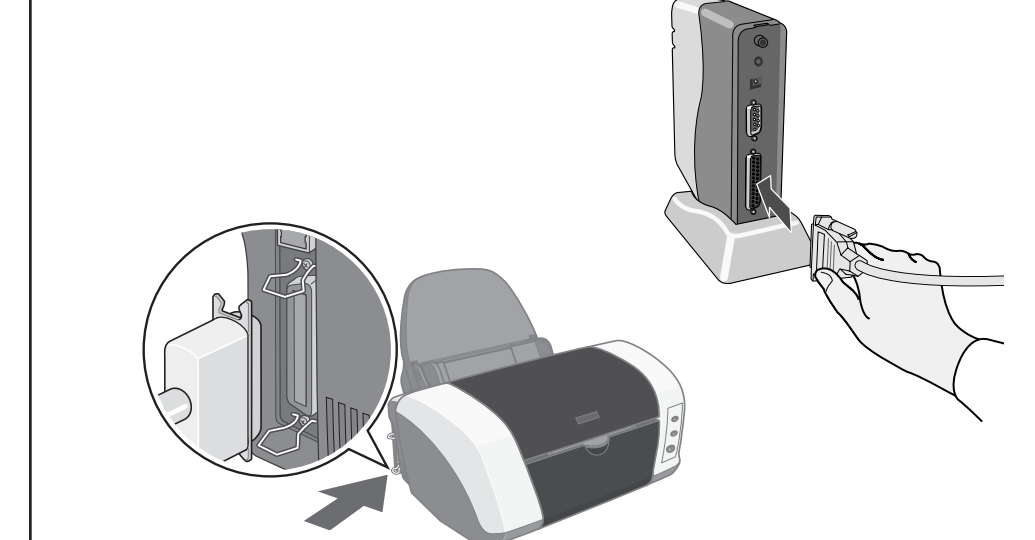
continue

### 3 Connect the Print Server

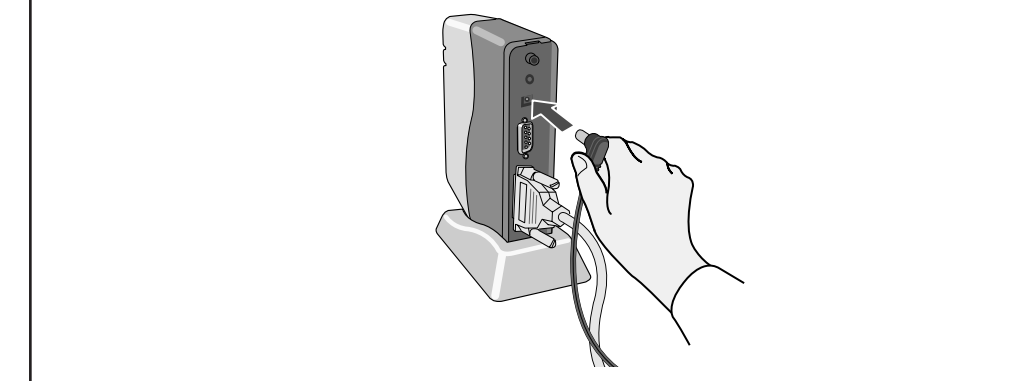
1 Slide the print server into the base and press firmly.



2 Turn off the printer. Then connect the parallel cable to the printer and print server.

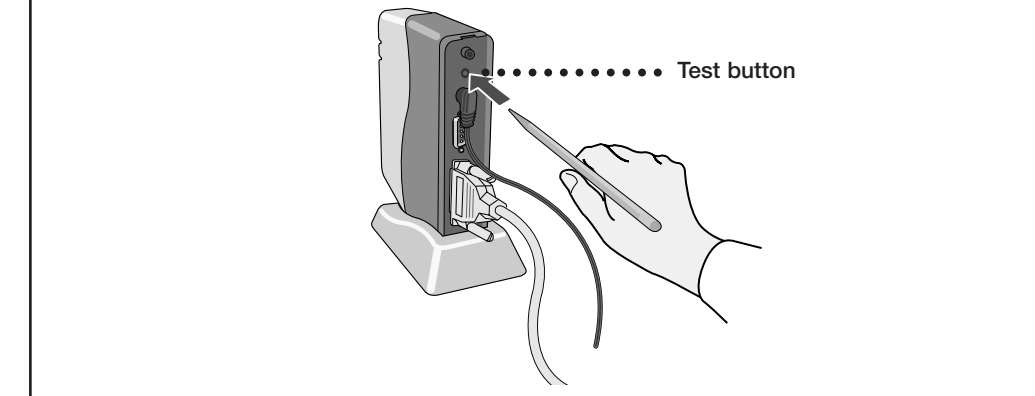


3 Connect the power supply to the print server and plug in the AC adapter. Both the green and yellow lights come on and then go out.



4 Turn on the printer.

5 To test the connection, press the test button for one second and release it. The status page prints.



If the status page doesn't print, or it indicates that zero bytes were transmitted or received, check the solutions under "Problems?" on the back of this sheet.

Turn over



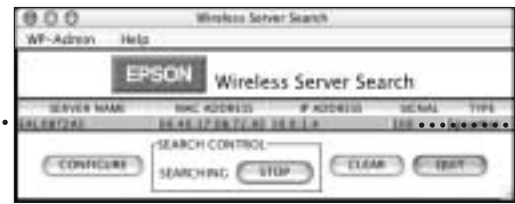
# 4 Configure the Print Server

After the files are installed, you see the Wireless Server Search window:



1 Click **START**. You see server information like this:

Appears when the server is found .....



..... Indicates signal strength

It may take up to 2 minutes for the server information to appear.

If you don't pick up a signal from the print server, move the print server and access point closer to each other and to the computer. If that doesn't work, try the solutions under "Problems?."

2 When you see server information on the screen, click **STOP**. Then click **CONFIGURE**.

3 When you see a message asking for a password, click **OK**. You see the Wireless Configuration screen:



**Note:** For descriptions of all the settings on the Wireless Configuration screen, see Appendix A in *Setup and Installation*.

4 Enter a Server Name that is easy to remember.

5 Check that Boot Method is set to **AUTO**. Then click **OK**.

**Note:** Always set the Boot Method to **AUTO**, unless you plan to unplug the print server. See *Setup and Installation* for details.

6 When you see the Wireless Server Search window again, click **QUIT**.



7 Do one of the following:

**Windows:** Click **Finish** on the last screen. Then continue with the instructions in the next section to set up a network port.

**Mac OS X:** Add the printer to the Print Center. (For details, see *Printer Basics*.) Congratulations! You're ready for wireless printing. See *Printer Basics* for instructions.

**Mac OS 8.6 to 9.x:** Select your **C82 Series** printer icon in the Macintosh Chooser. Congratulations! You're ready for wireless printing. See *Printer Basics* for more information.

# 5 Set Up a Network Port

You need to add the printer's network port to each Windows computer that will access it. If necessary, print a status page and note the server name or IP address of your print server before you begin. For instructions on setting up a network port on Windows NT®, see the *Setup and Installation* book.

## Windows XP or 2000

1 Do one of the following:

**Windows XP:** Click **Start > Control Panel > Printers and Other Hardware > Printers and Faxes**.

**Windows 2000:** Click **Start > Settings > Printers**.

2 Right-click your printer icon, then click **Properties**.

3 On the Ports tab, select your printer (if necessary), and click **Add Port**.

4 Select **Standard TCP/IP Port** and click **New Port**.



5 When you see the Add Standard TCP/IP Printer Port Wizard, click **Next**.

6 Enter your print server name or IP address and click **Next**.



7 Follow the instructions on the screen to complete the wizard.

8 Click **Close** to close the printer ports window, then click **Apply** on the Properties window.

9 To test the connection, select the **General** tab and click **Print Test Page**.

If the test page prints, click **OK** to close the Properties window.

If it doesn't print, try the solutions under "Problems" in the next column.

Congratulations! You're ready for wireless printing. See *Printer Basics* for more information.

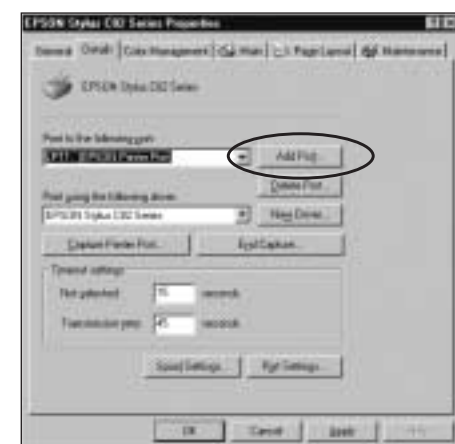
## Windows Me, 98, or 95

1 On the EPSON Installation Program screen, double-click **Install EpsonNet Direct Print Utility** and follow the on-screen instructions to install the utility and restart your computer.

2 Click **Start > Settings > Printers**.

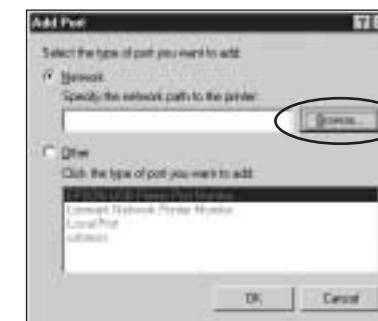
3 Right-click your printer icon, then click **Properties**. Click the **Details** tab.

4 Click **Add Port**.



continue

5 Make sure **Network** is selected, then click **Browse**.



6 Click to expand the network path, then click the + next to **Epson\_lpr** and select your printer.



7 Click **OK**, then click **OK** again. Click **Apply** on the Details tab.

8 To test the connection, click the **General** tab and click **Print Test Page**.

If the test page prints, click **Yes**, then click **OK** to close the Properties window.

If it doesn't print, try the suggestions under "Problems?" below.

Congratulations! You're ready for wireless printing. See *Printer Basics* for more information.

## Problems?

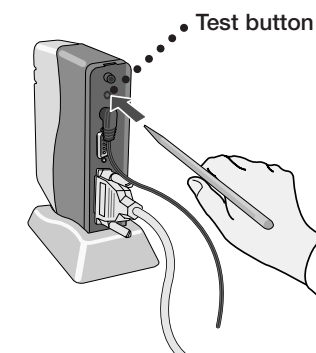
**The print server's status page doesn't print, or it indicates that zero bytes were transmitted or received.**

Make sure the parallel cable is securely connected to both the print server and your computer.

Make sure the printer is on. Check the printer's lights to see if there is a problem. See *Printer Basics* for details.

Unplug the AC adapter from the print server and plug it in again. Then press the print server's test button for 10 seconds to reset it to its factory defaults. If you still have problems, contact EPSON.

**The Wireless Server Search window fails to pick up a signal from the print server.**



Make sure the print server, printer, and access point are not near a cordless phone unit, microwave oven, Bluetooth™ device, or large metal object. Try moving them to a new location, or try moving them closer to each other.

Press the print server's test button for 10 seconds to reset it. On Macintosh, select your wireless network again.

Try restarting your computer.

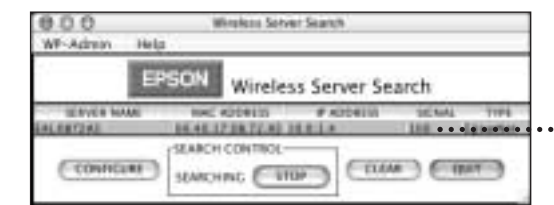
On Macintosh, make sure that AirPort is on, and that both AppleTalk and TCP/IP are enabled.

Confirm the connection between the computer and your access point or base station. If you have problems establishing a connection, reset the access point or base station.

continue

You are getting a wireless signal, but you are not able to print.

Check the Wireless Server Search window to make sure your wireless link has adequate strength—at least 50 percent. If the signal is weak, try moving the print server, printer, and access point or base station.



..... Signal strength

Make sure that your network port is set up correctly (Windows), or that you've selected the printer in the Chooser (Mac OS 8.6 to 9.x) or added it to the Print Center (Mac OS X).

Check the printer's lights to see if there is a problem with the printer. See *Printer Basics* for details.

You are unable to see the printer in the Macintosh Chooser or Print Center.

Make sure you are connected to the correct AirPort network. See your AirPort documentation for details.

You see a communication error when you try to print.

You may see an error message if another computer on your network is trying to print at the same time. Wait until the first print job is done. Your job will print when it reaches the top of the print queue.

Paper jams frequently.

Try loading fewer sheets of paper.

When you load paper, don't push it in. Also, slide the left edge guide against the paper, but not too tightly.

Use new, smooth, high-quality paper.

For more problem solving tips on wireless printing, see *Setup and Installation*. For printer problems, see *Printer Basics*.

## Where to Get Help

### EPSON Printer Information Center

View Print Show animations that quickly tell you how to load special paper, replace ink cartridges, and clean the print head. Also includes a *Reference Guide* with additional printer information. To launch EPSON Printer Information Center, double-click the **EPIC** icon on your desktop.

### Printer Basics

Includes instructions for printing, maintaining the printer, and solving basic printer problems.

### Setup and Installation

Provides greater detail about how to set up your printer for wireless network printing. Includes system requirements, print server specifications, and descriptions of settings on the Wireless Server Configuration screen.

### World Wide Web

From the Internet, you can reach EPSON Support at <http://support.epson.com>. Here you can download drivers and other files, look at product documentation and troubleshooting information, and receive technical advice through e-mail.

### Automated Telephone Services

A variety of help services are available 24 hours a day, 7 days a week. To use these services, you must have a touch tone telephone and call (800) 922-8911. Your EPSON SoundAdvice™ Express Code is 70400. Use this code to quickly select the EPSON Stylus C82WN in SoundAdvice.