

EPSON Stylus[®] C84N

Supplement

**Includes information about networking utilities
and installation on Windows[®] 98 and Me**

Copyright Notice

All rights reserved. No part of this publication may be reproduced, stored in a retrieval system, or transmitted in any form or by any means, electronic, mechanical, photocopying, recording, or otherwise, without the prior written permission of SEIKO EPSON CORPORATION. The information contained herein is designed only for use with this EPSON printer. EPSON is not responsible for any use of this information as applied to other printers.

Neither SEIKO EPSON CORPORATION nor its affiliates shall be liable to the purchaser of this product or third parties for damages, losses, costs, or expenses incurred by purchaser or third parties as a result of: accident, misuse, or abuse of this product or unauthorized modifications, repairs, or alterations to this product, or (excluding the U.S.) failure to strictly comply with SEIKO EPSON CORPORATION's operating and maintenance instructions.

SEIKO EPSON CORPORATION shall not be liable for any damages or problems arising from the use of any options or any consumable products other than those designated as Original EPSON Products or EPSON Approved Products by SEIKO EPSON CORPORATION.

Trademarks

EPSON and EPSON Stylus are registered trademarks of SEIKO EPSON CORPORATION. EPSON Software is a trademark of Epson America, Inc.

General Notice: Other product names used herein are for identification purposes only and may be trademarks of their respective owners. EPSON disclaims any and all rights in those marks.

The ENERGY STAR emblem does not represent EPA endorsement of any product or service.

Contents

Introduction	5
EpsonNet External Print Server	5
Installing Printer Software on Windows 98 and Me	6
Using Status Monitor	9
Turning Status Monitor Off and On Again	10
Getting Help with Status Monitor	11
Network Software Utilities	12
Where To Get More Information	13
EpsonNet Install Wizard	14
EpsonNet WinAssist	15
EpsonNet MacAssist	15
EpsonNet WebAssist	16
EpsonNet WebManager	16

Introduction

The EPSON Stylus® C84N printer is the ideal output device for business graphics, digital photographs, documents, and more. It includes an EpsonNet External Print Server that you connect to the printer's parallel port. With the print server, EpsonNet configuration software, and additional utilities, you can monitor printer status, manage network printers, and print across the Internet.

You can print to the EPSON Stylus C84N through the network from Microsoft® Windows®, Apple® Macintosh®, UNIX®, and IBM® OS/2®.

EpsonNet External Print Server

The EpsonNet External Print Server is a combination of hardware and software that makes the EPSON Stylus C84N printer available on your network without having to connect it directly to a workstation.

The print server hardware supports IEEE 802.2, IEEE 802.3, Ethernet II, and Ethernet SNAP protocols. It also supports TCP/IP, Novell® NetWare® IPX/SPX™, AppleTalk®, NetBEUI, the Internet Printing Protocol (IPP), and SNMP.

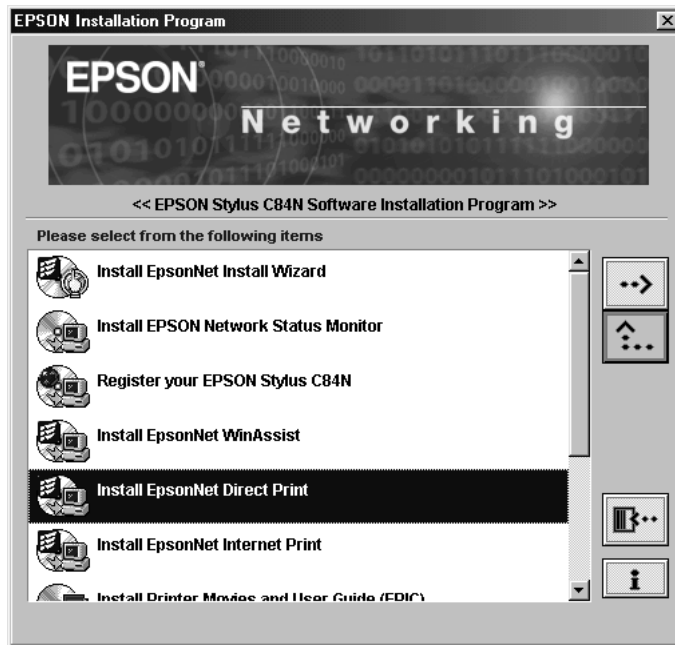
Installing Printer Software on Windows 98 and Me

Before you begin, make sure that both the printer and print server are set up as described on the *Start Here* sheet. Then follow the steps below to install the printer software on Windows 98 or Me.

Note: If your network does not use DHCP, see the online *Administrator's Manual* for instructions on assigning an IP address to the printer.

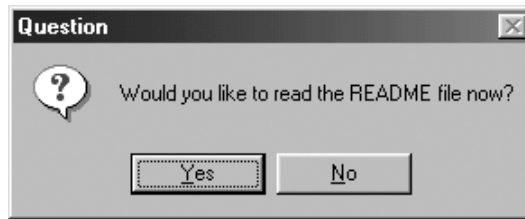
1. Turn on the computer and make sure it is properly connected to the network. Make sure the printer and print server are on.
2. Put the EPSON Printer Software CD in your CD-ROM or DVD drive.

You see the EPSON Installation Program window.

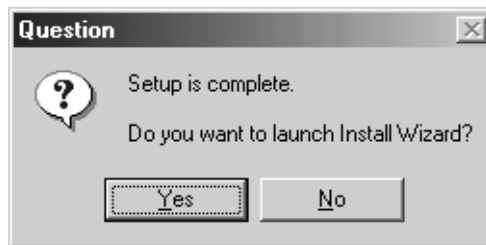


3. Double-click **Install EpsonNet Direct Print** and follow the on-screen instructions to install Direct Print.

4. Click **No** when you see the following dialog box.

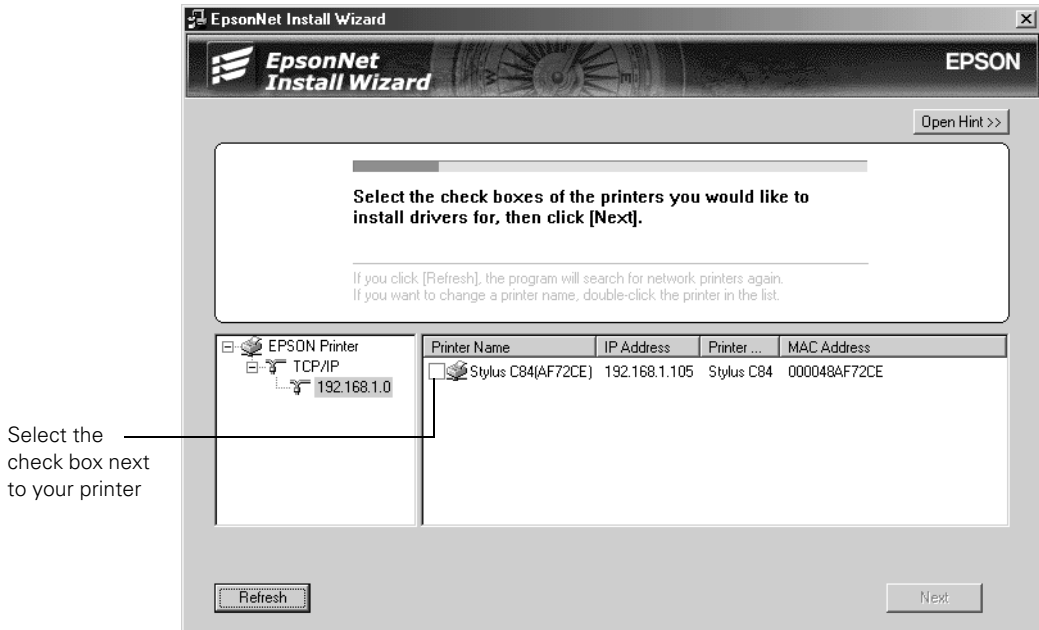


5. Restart the computer when prompted.
6. After the computer restarts, open the EPSON Program Installation window again. To do this, double-click **My Computer**, double-click the **C84N CD-ROM** icon, then double-click the **SETUP.EXE** icon.
7. Double-click **Install EpsonNet Install Wizard**.
8. When you see a screen like this, click **Yes** to open the Install Wizard:



9. You see a license agreement. Read the agreement and click **Accept** to continue.

Install Wizard searches the network, finds your printer, and displays it in a dialog box. This can take 20 to 30 seconds.



10. Select the check box next to your printer and click **Next**.

Install Wizard automatically installs the printer driver and configures the printer port.

11. Make sure there is letter-size paper loaded in the printer, then click the **Print** button to print a test page. If the test page prints, installation was successful.

12. Click **Quit**.

13. Optionally, do any of the following:

- If you want to monitor the printer's status from this computer, double-click **Install EPSON Network Status Monitor** and follow the on-screen instructions. Status Monitor automatically performs background monitoring whenever you print a document and notifies you if the printer has any problems.

- Install the printer movies and *User's Guide*. To do this, double-click **Install Printer Movies and User Guide (EPIC)**. (You may have to scroll down to see this option.) To view the printer movies or *User's Guide*, double-click the **EPSON Printer Information Center** icon on your desktop.
- Install EPSON Software™ Film Factory™, a photo management program. To do this, double-click **Install EPSON Software Film Factory**. (You may have to scroll down to see this option.) Then follow the on-screen instructions.
- View the print server *Administrator's Manual*. To do this, double-click **View Administrator's Manual**. (You may have to scroll down to see this option.) If you don't have Acrobat Reader®, install it when prompted.

14. Close the EPSON Installation Program window, then remove the CD-ROM from the drive.


Using Status Monitor

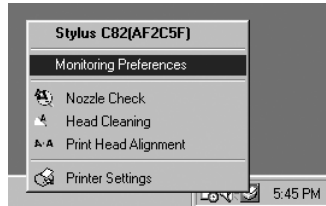
EPSON Status Monitor enables you to monitor one or more network printers from any computer running Windows 98, NT 4.0, Me, 2000, or XP. Status Monitor shows ink levels for the printer and notifies you if the printer has any problems.

Status Monitor automatically performs background monitoring whenever you print a document. If an error occurs, such as a paper out error, you're automatically notified of the problem. However, background monitoring increases network traffic, so you may want to turn it off on some or all workstations. See "Turning Status Monitor Off and On Again" in the next section.

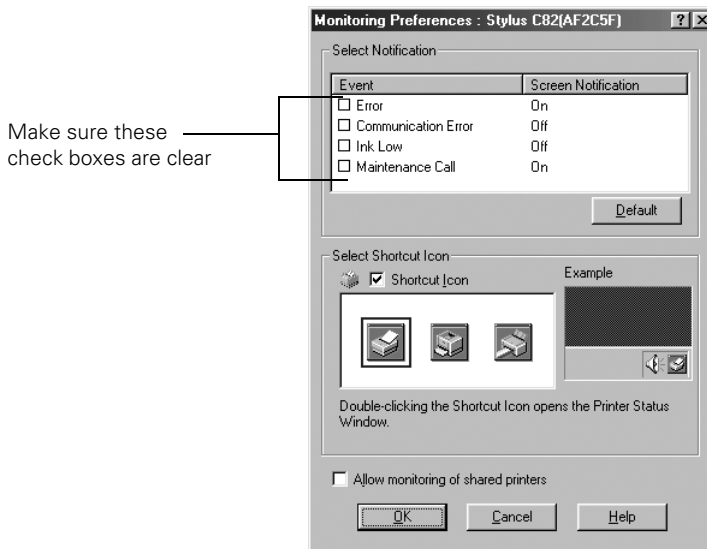
Turning Status Monitor Off and On Again

To turn off Status Monitor, follow the steps below.

1. Right-click the  Status Monitor icon in the taskbar and click **Monitoring Preferences**.



You see the following dialog box.




2. Clear all check boxes in the **Select Notification** section, then click **OK**. Status Monitor is now turned off.

Note: For more information about monitoring preferences, click the **Help** button.

To turn Status Monitor on again, repeat these steps, but select the check boxes for the items you want to monitor.

Getting Help with Status Monitor

To get more information about Status Monitor, follow the steps below:

1. Right-click the  Status Monitor icon in the taskbar, then click **Printer Settings**. You see the following dialog box.



2. Click the **Help** button to open online help.

Network Software Utilities

There are several network software utilities that you can use with the EpsonNet External Print Server. You can find the following utilities on the printer software CD-ROM:

- **EpsonNet Install Wizard (Windows only)**
Use this utility to find the print server on the network, automatically install the printer driver, and automatically configure the network port. Install Wizard also has a script mode to automate printer setup on workstations. See the online *EpsonNet Install Wizard User's Guide* for details.
- **EPSON Network Status Monitor (Windows only)**
Use Status Monitor to monitor a network printer from a Windows computer.
- **EpsonNet WinAssist (Windows only)**
Use WinAssist to configure the print server for NetWare or NetBEUI. You can also use it to make changes to the TCP/IP configuration. See page 15 for installation instructions.
- **EpsonNet MacAssist (Macintosh only)**
Use MacAssist to configure the print server for AppleTalk and TCP/IP. See page 15 for installation instructions.
- **EpsonNet WebAssist**
Use WebAssist to configure the print server using a web browser. You don't have to install it because it resides on the print server hardware. See page 16 for a list of supported browsers.
- **EpsonNet WebManager (Windows only)**
Provides printer management and monitoring features using a web browser, across the Internet or on your intranet. See page 16 for details.
- **EpsonNet Direct Print Utility**
If you set up a Windows 98 or Me computer to use the printer, you used this utility as part of the setup. Direct Print enables TCP/IP (LPR) printing in Windows 98 and Me. To install Direct Print, see page 6. For more information about Direct Print, see the online *Administrator's Manual*.
- **EpsonNet Internet Print Utility**
Offers printing across the Internet and intranets for Windows 98, NT 4.0, and Me. See the online *Administrator's Manual* for details.

Where To Get More Information

Here's where you can get more information about the EpsonNet External Print Server and related utilities:

- **Online *Administrator's Manual***

The online *Administrator's Manual* provides detailed information about the print server, including configuration and printing instructions for the supported network environments, information about the software utilities, troubleshooting guidelines, and specifications. To view this manual, put the EPSON Printer Software CD in your CD-ROM or DVD drive and double-click **View Administrator's Manual**. If you don't have Adobe Reader, install it when prompted.

- **README files**

For more information about the print server and software utilities, look for the README.TXT and README.DOC files on the printer software CD-ROM.

- **Online help**

Most of the utilities include online help that you can access by clicking the **Help** or **?** button.

- ***EpsonNet Install Wizard User's Guide***

For advanced information about Install Wizard, see the *EpsonNet Install Wizard User's Guide*. To view the guide, navigate to **C:\Program Files\EPSON\Install Wizard**, and double-click **MANUAL.PDF**. You need Adobe Reader, which is included on the printer software CD-ROM.

- **EPSON technical support**

EPSON offers a variety of technical support options. See the *Printer Basics* book for more information.

EpsonNet Install Wizard

EpsonNet Install Wizard automatically finds the print server, installs the printer driver, and configures the network port for your printer. It is the easiest way to set up the printer for TCP/IP printing on a Windows system.

Installing EpsonNet Install Wizard

Before you begin, make sure you set up your printer and print server as described on the *Start Here* sheet.

1. Make sure the printer and print server are set up as described on the *Start Here* sheet. Also, make sure both the printer and print server are on.
2. Make sure your Windows computer is connected to the network, then turn it on.
3. Insert the EPSON Printer Software CD in your CD-ROM or DVD drive.
You see the EPSON Installation Program window.
4. Double-click **Install EpsonNet Install Wizard**. Follow the on-screen instructions to install **Install Wizard**.
5. When you're prompted to launch **Install Wizard**, click **Yes**.
6. You see a license agreement. Read it and click **Accept** to continue.

Install Wizard searches the network, finds your printer, and displays it in a dialog box. This can take 20 to 30 seconds.

Note: **Install Wizard** may find more than one printer. To identify your printer, press the print server's status sheet button for two seconds to print a status report. The printer's name and/or IP address are listed on the report.

7. Select the check box next to your printer and click **Next**.

Install Wizard automatically installs the printer driver and configures the printer port. This takes about 10 seconds.

8. Make sure there is letter-size plain paper in the printer, then click the **Print** button to print a test page. If the test page prints, the installation was successful.

EpsonNet WinAssist

The EpsonNet WinAssist program lets you configure the print server using Windows 98, NT 4.0, 2000, Me, or XP. See the online *Administrator's Manual* for complete instructions on using EpsonNet WinAssist.

Installing EpsonNet WinAssist

Before you install the software, make sure you set up the required protocols and services in your operating system. If you install EpsonNet WinAssist before you add or delete protocols or services, the software might not work and you might need to uninstall and reinstall EpsonNet WinAssist. See the *Administrator's Manual* for more information.

Follow the steps below to install EpsonNet WinAssist:

1. Make sure the printer and print server are set up as described on the *Start Here* sheet. Also, make sure both the printer and print server are on.
2. Make sure the computer is connected to the network, then turn it on.
3. Insert the EPSON Printer Software CD in your CD-ROM or DVD drive.
You see the EPSON Installation Program window.
4. Double-click **Install EpsonNet WinAssist**, then follow the on-screen instructions to install the program.

EpsonNet MacAssist

The EpsonNet MacAssist program lets you configure the print server for a Macintosh environment. See the online *Administrator's Manual* for complete instructions on using EpsonNet MacAssist.

Installing EpsonNet MacAssist

1. Make sure the printer and print server are set up as described on the *Start Here* sheet. Also, make sure both the printer and print server are on.
2. Make sure your Macintosh is connected to the network, then turn it on.
3. Insert the EPSON Printer Software CD in your CD-ROM or DVD drive.

4. Double-click the CD-ROM icon (if necessary), then double-click the EPSON Installer icon.
5. Double-click Install EpsonNet MacAssist and follow the on-screen instructions.

EpsonNet WebAssist

You don't have to install the EpsonNet WebAssist program, because it resides on the print server hardware. It enables you to configure the print server using one of the following browsers:

- Microsoft Internet Explorer version 4.x or later
- Netscape Navigator® version 3.02 or later
- Netscape Communicator® version 4.x or later
- Safari™ 1.0

Note: The Update Home Page function in EpsonNet WebAssist may not work if you are using Microsoft Internet Explorer version 4.x on a Macintosh.

See the online *Administrator's Manual* for details about WebAssist.

EpsonNet WebManager

EpsonNet WebManager lets you monitor and control your network printers. It supports Windows, Macintosh, and UNIX platforms, and allows you to manage EPSON printers that support the printer MIB (Management Information Base) standard, RFC 1759.

Although EpsonNet WebManager supports multiple network platforms, you can only install it in a Windows NT 4.x, 2000, or XP environment. Make sure you check the README.TXT file in the ENWEBM\DISK1 directory on the printer software CD-ROM for the latest information.

Note: TCP/IP and a web browser must already be installed before you can install EpsonNet WebManager.

See the EpsonNet WebManager online manual for more information. To view it, do one of the following:

- Click **Start > Programs** or **All Programs > EpsonNet WebManager > Online Guide** (Windows only).
- Start EpsonNet WebManager, click the **Help** button on the main menu, then click **Online Manual**.

You can access EpsonNet WebManager from a browser on Windows 98, NT 4.0, 2000, and XP, as well as on Macintosh and UNIX. For supported UNIX systems, see the **README.TXT** file in the **ENWEBM\DISK1** directory on the printer software CD-ROM.

EpsonNet WebManager displays best on VGA monitors set at a screen resolution of 1024 × 768 pixels, with 256 or more colors.

EpsonNet WebManager Functions

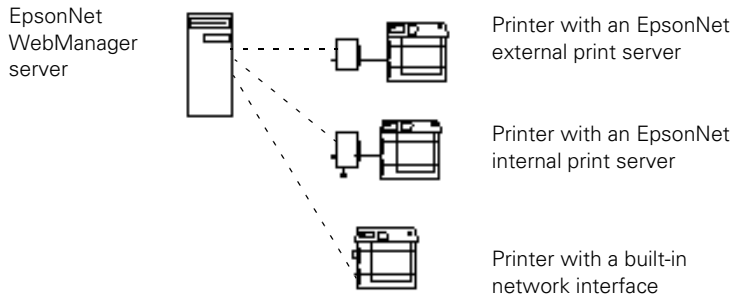
The following are the main functions of EpsonNet WebManager:

- **Device list**
Searches for printers on the network and displays a list with current status.
- **Device details**
Lets you change printer settings.
- **Network settings**
Lets you change network interface settings.
- **Group management**
Helps you manage network printers more effectively.

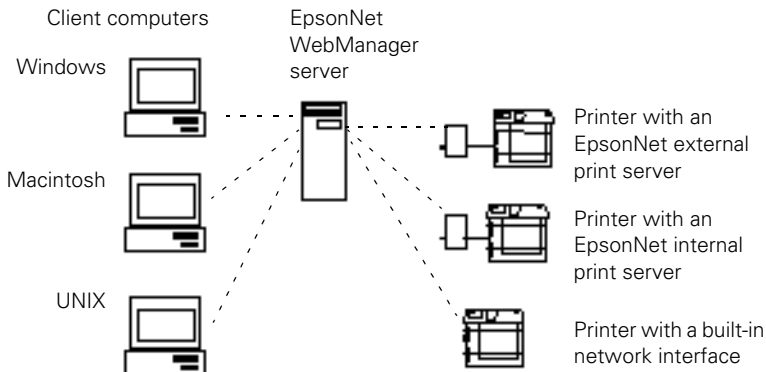
Setting Up EpsonNet WebManager

You can set up the software and use it to manage your network printers in either of two ways:

- Install EpsonNet WebManager on a Windows system and run it through a browser installed on the same computer. The EpsonNet WebManager server functions as the network administration server:



- Install EpsonNet WebManager on a Windows server, but run it through a browser installed on another computer in the network (a client). This lets you manage your network printers from Windows, Macintosh, or UNIX platforms:



Installing EpsonNet WebManager

Before you install EpsonNet WebManager, make sure TCP/IP is installed and the IP address or host name for the computer is set. Register the host name in the HOSTS file on the computer.

Follow these steps to install EpsonNet WebManager:

1. Make sure the printer and print server are set up as described on the *Start Here* sheet. Also, make sure both the printer and print server are on.
2. Make sure the computer is connected to the network, then turn it on.
3. Insert the EPSON Printer Software CD in your CD-ROM or DVD drive.
You see the EPSON Installation Program window.
4. Double-click **Install EpsonNet WebManager**, then follow the on-screen instructions to install the program.

Make sure that anyone who needs to use EpsonNet WebManager knows the IP address or host name of the server.

Starting EpsonNet WebManager

To open EpsonNet WebManager on the computer it is installed on, click **Start > Programs or All Programs > EpsonNet WebManager > EpsonNet WebManager**.

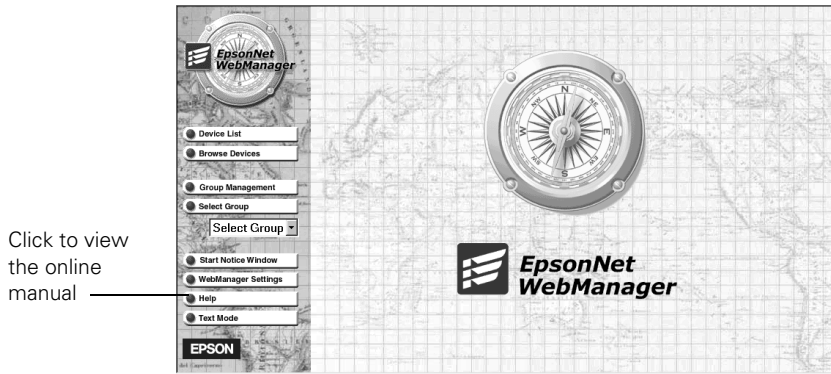
To open EpsonNet WebManager from a client computer, open a browser and enter the IP address (or host name) of the server and port number (8090), as follows:

http://the IP address or host name of the server:8090/


for example:

http://192.168.100.201:8090/

You see the main page:



To view the EpsonNet WebManager online manual, click the **Help** button in the main menu, then click **Online Manual**.

You can also click the  help icon on any page in the manual to get help with the functions on that page.